



INSTALLING A M.2 SSD ON A LAPTOP PC



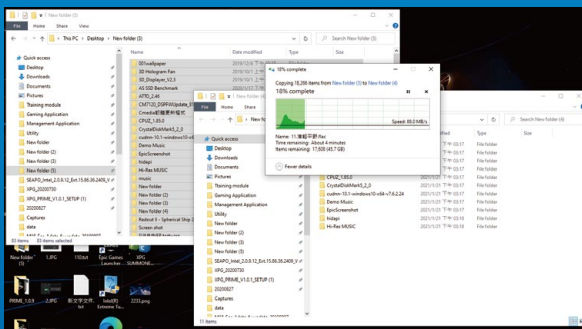
BEFORE INSTALLATION



1. GATHER THE THINGS YOU'LL NEED

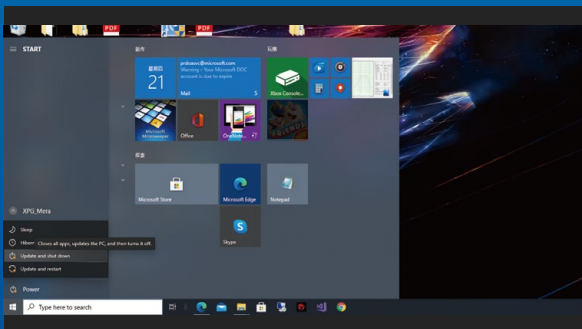
PC, Phillips screwdrivers, and ADATA M.2 SSD

*Please use a standard Phillips screwdriver (3.5mm) for disassembling the case; and a smaller Phillips screwdriver for installing the M.2 solid state drive as it uses screws with a diameter of 1.85-1.98mm.



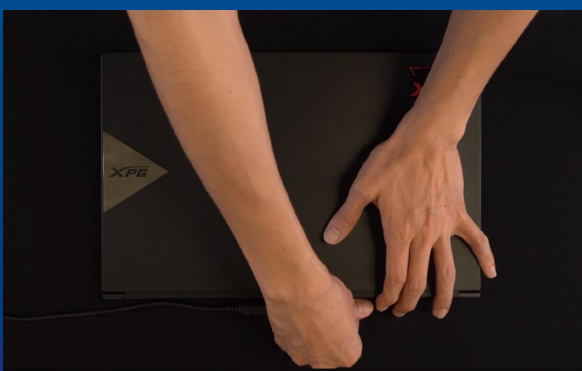
2. BACK UP YOUR DATA

Make sure to backup the important data on your PC to an external device, such as an external HDD, before starting installation.



3. POWER OFF YOUR PC

After backing up your data, power off your PC to avoid data loss or damage to other components during installation.

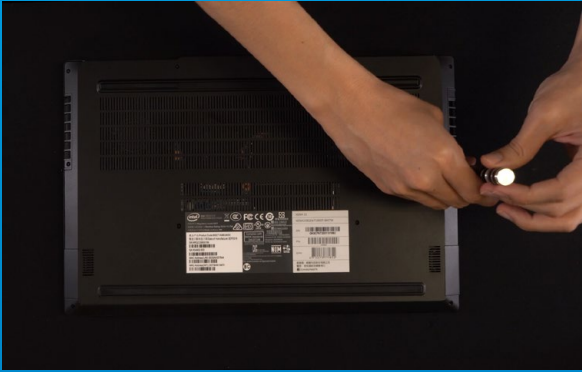


4. UNPLUG POWER CORD AND BATTERY

This action is necessary to discharge residual power that can damage your PC and its components.

*The battery removal step applies only to laptops when it's possible to remove the battery. To see how to remove the battery, refer to your user manual.

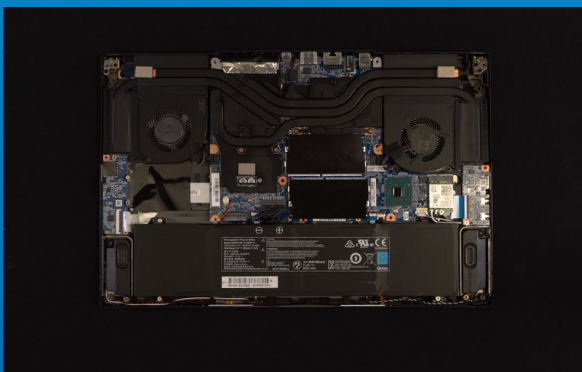
INSTALLATION



1. REMOVE YOUR PC'S BACK PLATE

Use your standard Phillips screwdriver to remove the screws from the back plate.

*If you are unsure how to do this, refer to your user manual



2. LOCATE THE M.2 PCIE SLOT AND CONFIRM THERE ARE SCREWS

Locate the M.2 PCIe slot, ensure the SSD will fit and confirm there are screws present.

*The location of slots may vary by PC. Please check your PC's user manual for more information.

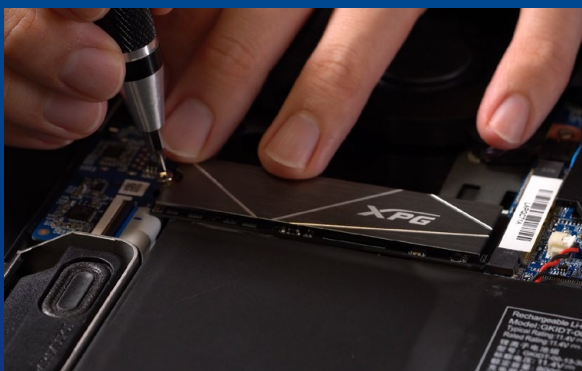
**Generally speaking, the screws that secure the SSD in place will be installed on the motherboard when the laptop is shipped from the factory.



3. ALIGN THE M.2 SLOT AND INSERT THE SOLID STATE DRIVE

Use your small Phillips screwdriver to remove the screws on the motherboard. Align the notches in the SSD with the ridges in the PCIe slot, then insert at an angle. Give it a final push to ensure it is securely in place.

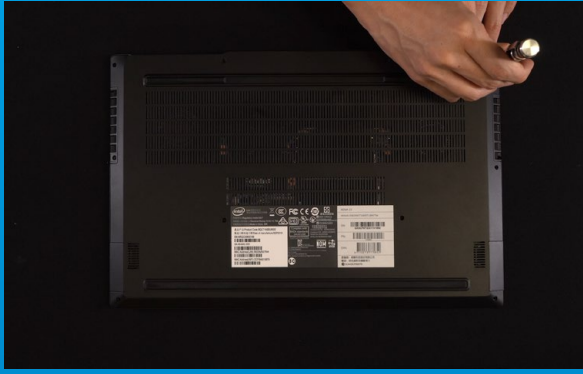
*The slot has a foolproof design. Please insert the SSD in the direction corresponding to the pins on the solid state drive and the slot. Do not insert it forcibly to avoid damage to the product.



4. FASTEN THE SCREWS TO SECURE THE SSD

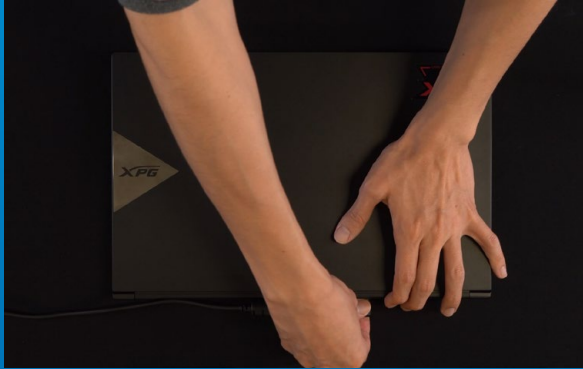
Use your small Phillips screwdriver to secure the SSD into place.

*Do not overtighten the screws



5. SECURE THE BACK PLATE INTO PLACE

*Do not overtighten the screws as it may cause damage



6. PLUG IN THE POWER CORD AND POWER ON THE PC TO COMPLETE INSTALLATION



CUSTOMER SERVICE AND TECHNICAL SUPPORT

Contact Us: <https://www.adata.com/en/support/online/>