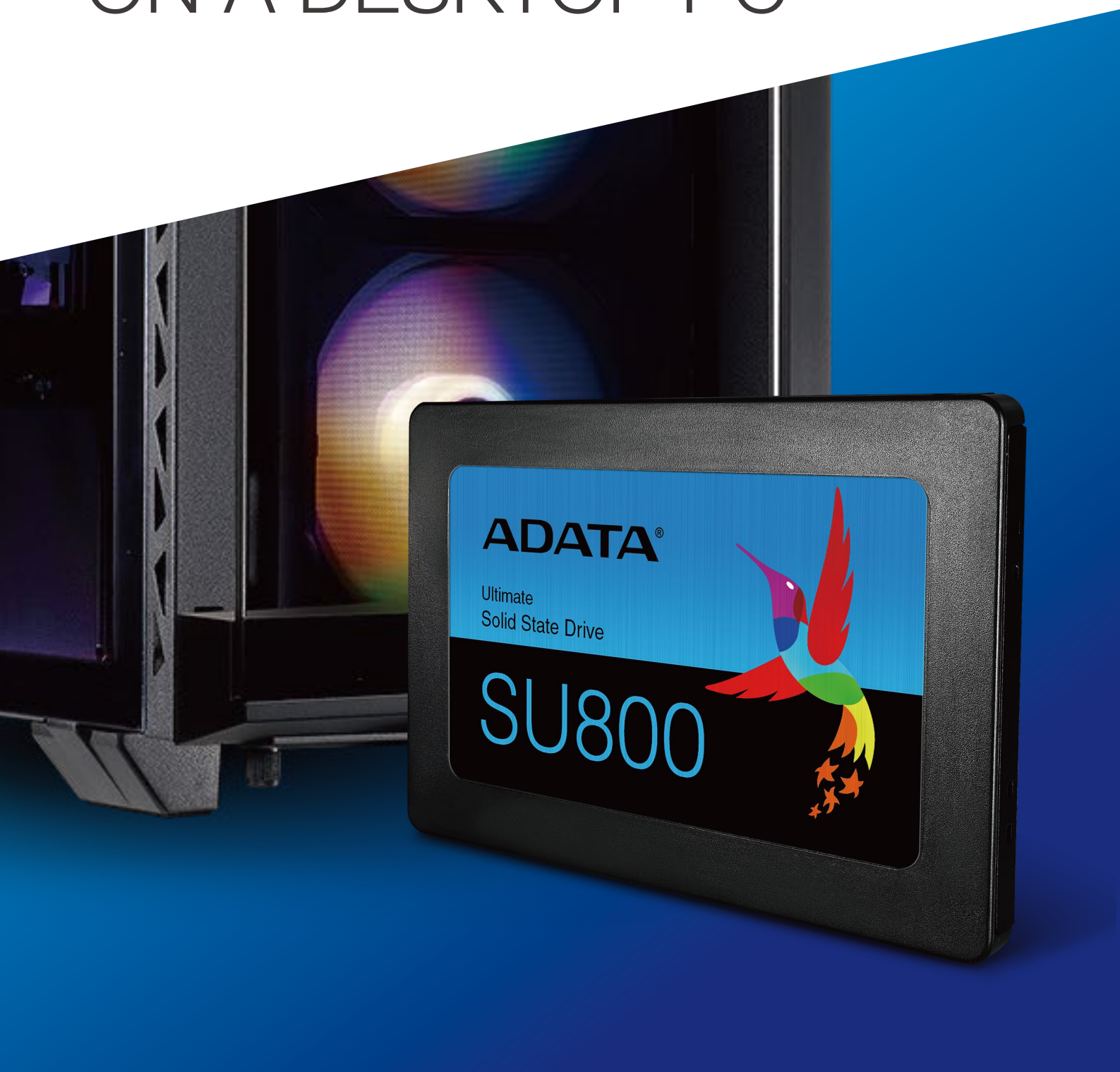




INSTALLING AN 2.5" SATA SSD ON A DESKTOP PC



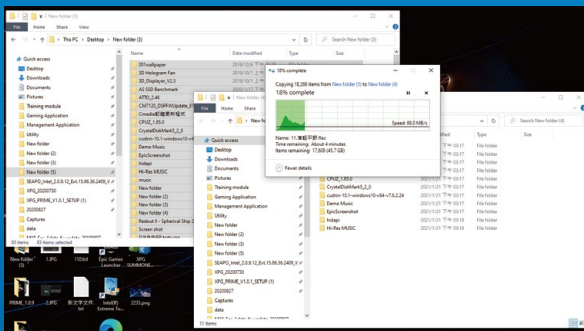
BEFORE INSTALLATION



1. GATHER THE THINGS YOU'LL NEED

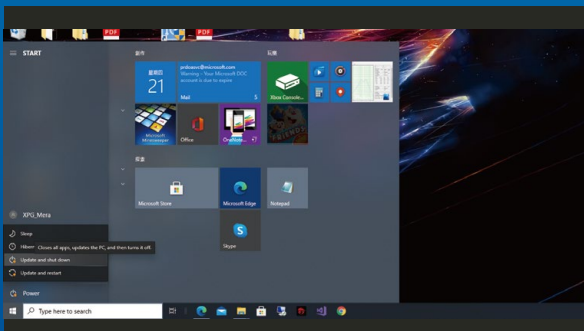
PC, Phillips screwdriver, and AData 2.5" SATA SSD

*Please use a standard Phillips screwdriver (3.5mm) for disassembling the case.



2. BACK UP YOUR DATA

Make sure to backup the important data on your PC to an external device, such as an external HDD, before starting installation.



3. POWER OFF YOUR PC

After backing up your data, power off your PC to avoid data loss or damage to other components during installation.



4. SWITCH OFF THE POWER SWITCH AND UNPLUG POWER CORD

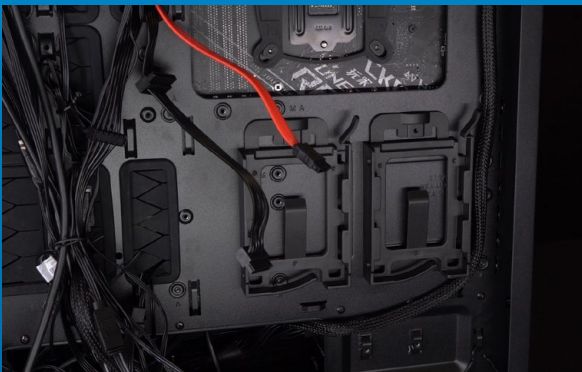
This action is necessary to discharge residual power that can damage your PC and its components.

INSTALLATION



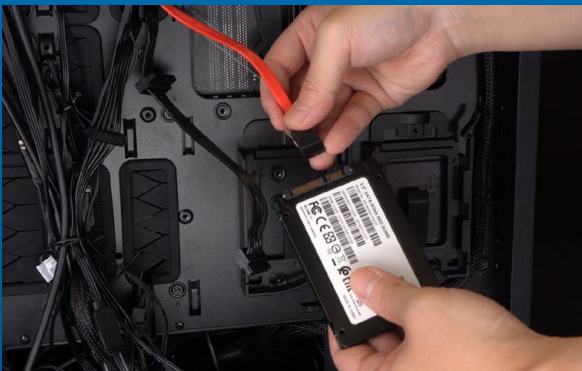
1. REMOVE THE PC CASE

Use the standard Philips screwdriver to remove the screws and then remove the PC case



2. CONFIRM THE POSITION OF THE 2.5" SLOT AND REMOVE THE BRACKET

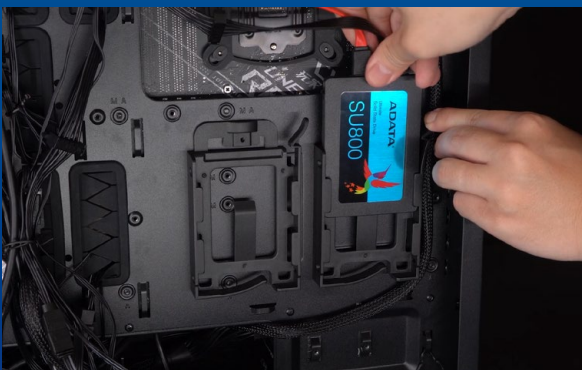
*Please check the side of the motherboard to find the unused 2.5" bracket



3. REMOVE THE BRACKET AND CABLE

*Each PC has different ways to fix drives. There may be drawers or brackets to place the solid state hard drives. The way to remove them will involve pulling out the bracket or support frame.

**When removing the stand, please check the screws on the top or side carefully, these screws may be fixed on it.



4. CONNECT CABLES AND ATTACH BRACKET TO THE NEW 2.5" SATA SSD. PUT THE BRACKET IN THE SLOT TO FIX DRIVES

There is a row of pins on the cable as well as on the SSD. Align to the correct orientation and place the bracket back into the slot.

*The slot has a foolproof design. Please insert the SSD in the direction corresponding to the pins on the solid state drive and the slot.. Do not insert it forcibly to avoid damage to the product.



5. RESEMBLE THE CASE

*Do not overtighten the screws as it may damage the screws and back plate



6. PLUG IN THE POWER CORD AND POWER ON THE PC TO COMPLETE INSTALLATION



CUSTOMER SERVICE AND TECHNICAL SUPPORT

Contact Us: <https://www.adata.com/en/support/online/>