

ROG PHONE 5S

ZS676KS

User Guide

Care and safety

Guidelines



Road safety comes first. We strongly recommend not to use your device when driving or operating any type of vehicle.



This device should only be used in environments with ambient temperatures between 0°C (32°F) and 35°C (95°F).



Turn off your device in restricted areas where the use of mobile devices is prohibited. Always obey rules and regulations when in restricted areas, such as, in aircraft, movie theater, in hospitals or near medical equipment, near gas or fuel, construction sites, blasting sites and other areas.



Use only AC adapters and cables approved by ASUS for use with this device. Refer to the rating label on the bottom of your device and ensure that your power adapter complies with this rating.



Do not use damaged power cables, accessories, and other peripherals with your device.



Keep your device dry. Do not use or expose your device near liquids, rain, or moisture.



You can put your device through x-ray machines (such as those used in conveyor belts for airport security), but do not expose the device to magnetic detectors and wands.



The device screen is made of glass. If the glass gets broken, stop using the device and do not touch the broken glass parts. Immediately send device for repair to ASUS-qualified service personnel.



Do not listen at high volume levels for long periods to prevent possible hearing damage.



Disconnect the AC power before cleaning your device. Use only a clean cellulose sponge or chamois cloth when cleaning your device screen.



Send device for repair to ASUS-qualified service personnel only.

Proper disposal



Risk of explosion if battery is replaced by an incorrect type. Dispose of used batteries according to the instructions.



DO NOT throw the battery in municipal waste. The symbol of the crossed out wheeled bin indicates that the battery should not be placed in municipal waste.



DO NOT throw this product in municipal waste. This product has been designed to enable proper reuse of parts and recycling. The symbol of the crossed out wheeled bin indicates that the product (electrical, electronic equipment and mercury-containing button cell battery) should not be placed in municipal waste. Check local regulations for disposal of electronic products.



DO NOT throw this product in fire. DO NOT short circuit the contacts. DO NOT disassemble this product.



WARNING

Cancer and Reproductive Harm-

www.P65Warnings.ca.gov

ROGTalk Fans Forum

(http://www.asus.com/zentalk/global_forward.php)



NOTES:

- For more legal and e-labelling information, check on your device from **Settings > System > Regulatory labels** and **Settings > System > About phone > Legal information**.
 - The app descriptions shown in this manual are for reference purposes only, and may not exactly match what you see on your device.
-

Contents

1	Basics	
	Welcome!.....	7
	Get your ROG Phone ready!.....	8
	Starting for the first time	16
	Using the touchscreen.....	17
2	There's no place like Home	
	Asus Home features.....	20
	Home screen	20
	Quick settings	21
	Notifications	22
	Personalizing your Home screen	23
	Widgets	23
	Wallpapers	24
	My Themes.....	25
	Editing your Home screen.....	26
	Setting up the date and time.....	26
	Setting up your ringtone and alert sounds.....	26
	Lock Screen	27
	Customizing your lock screen.....	27
	Fingerprint ID sensor.....	28
	Starting your ROG Phone for the first time	28
	Setting up fingerprint ID from Settings	29
	Face Unlock	30
	Setting up face unlock from Settings.....	30
3	Work hard, play harder	
	Chrome	33
	Launching Chrome	33
	Sharing pages	34
	Bookmarking pages	34
	Clearing the browsing data	34
	Gmail.....	35
	Google Calendar	36
	Creating events	36
	Editing or removing events	36
	Creating reminders	37
	Editing or removing reminders	37
	File Manager.....	38
	ASUS Data Transfer	39
4	Keeping in touch	
	Call in style	40
	Dual SIM feature.....	40
	Making calls.....	42

	Calling your favorite contacts	44
	Receiving calls	44
	Other call options.....	45
	Recording calls	46
	Managing contacts	47
	Contacts Settings	47
	Setting up your profile	47
	Adding contacts.....	48
	Marking your favorite contacts	49
	Social networking with your contacts	50
	Send messages and more	51
	Messages	51
5	Fun and entertainment	
	Using a headset.....	52
	Connecting the audio jack.....	52
	YT Music.....	53
6	Your precious moments	
	Capture moments	54
	Launching the Camera app	54
	Photo Locations	55
	Advanced camera features	55
	Time lapse	56
	Using the Gallery	57
	Viewing the photo location	57
	Editing images.....	57
	Sharing files from the Gallery.....	57
	Deleting files from the Gallery.....	58
7	Staying connected	
	Mobile network.....	59
	Enabling the mobile network	59
	Wi-Fi	59
	Enabling Wi-Fi	59
	Connecting to a Wi-Fi network.....	60
	Disabling Wi-Fi.....	60
	Bluetooth®	60
	Enabling Bluetooth®	60
	Pairing your ROG Phone to a Bluetooth® device.....	61
	Unpairing your ROG Phone from the Bluetooth® device.....	61
	Tethering	62
	Wi-Fi Hotspot	62
	USB Tethering	63
	Bluetooth Tethering.....	63

8	Travel and Maps	
	Weather	64
	Launching the Weather app	64
	Weather home screen	65
	Clock	66
	Alarm clock	66
	World clock	67
	Stopwatch	67
	Timer	68
9	Zen Everywhere	
	Special ROG Tools	69
	Calculator	69
	Sound Recorder	70
	Mobile Manager	72
10	Maintain your ROG	
	Keeping your device up-to-date	73
	Updating your system	73
	Storage	73
	Backup	73
	Reset	73
	Securing your ROG Phone	74

Appendix

Welcome!

Explore the intuitive simplicity of ASUS ROG UI!

ASUS ROG UI is a charming and intuitive interface exclusively for ROG Phones. It provides you with special apps, which are integrated in or with other apps, to fit your unique individual needs and make your life easier while letting you have fun with your ROG Phone.



Camera

With PixelMaster technology, capture those precious moments in vivid and high-quality photos and videos.



Messages

Messages, an intuitive and delightful app, lets you send/receive SMS/MMS messages, as well as send group texts, photos, or audio messages. You can add emojis or stickers to your messages, share your location, archive your messages, and easily block SMS senders. You can also take photos or record videos and easily share these files.



File Manager

File Manager allows you to easily locate and manage your data on the internal storage of your ROG Phone and its connected external storage devices.

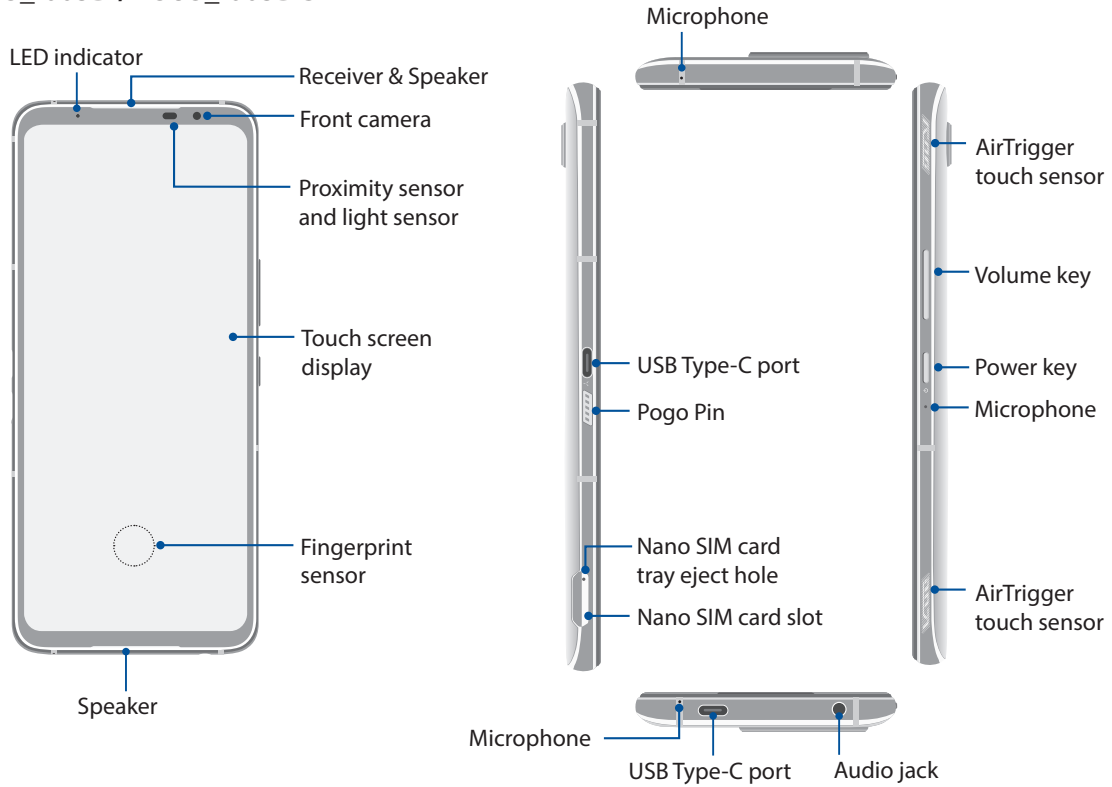
NOTE: Availability of ASUS ROG UI apps vary per region and ROG Phone model. Swipe up on your Home screen to check the apps available on your ROG Phone.

Get your ROG Phone ready!

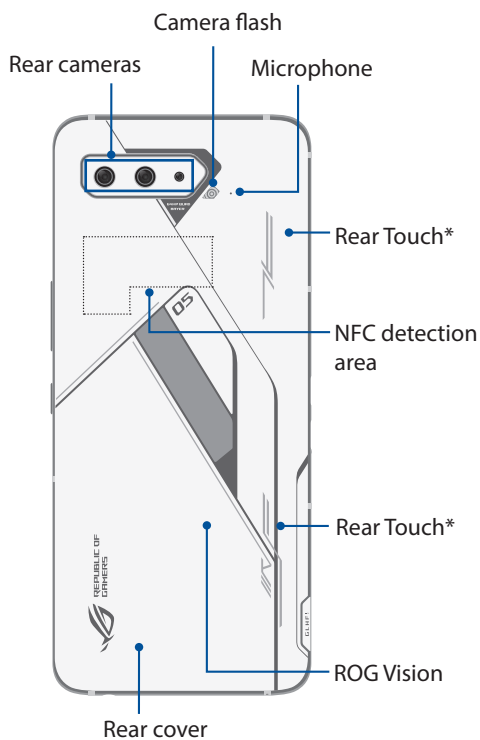
Parts and features

Take a hold of your device and have it running in a jiffy.

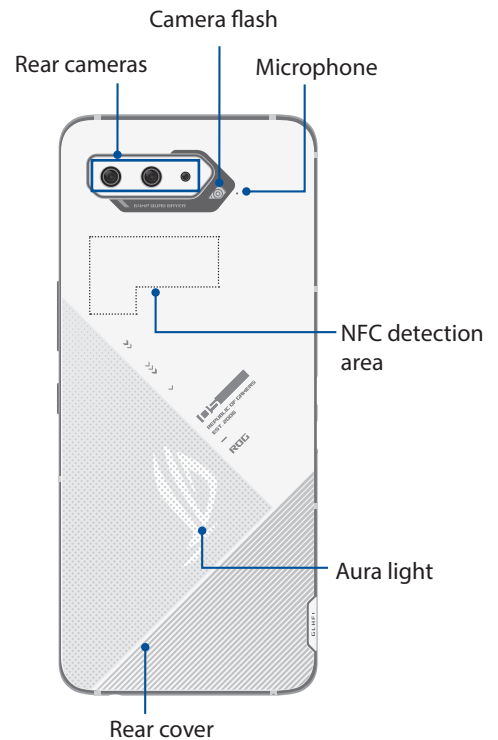
ASUS_I005D / ASUS_I005DC



ASUS_I005D



ASUS_I005DC



* Users can define gaming functions for these keys and slide to trigger.

WARNING!

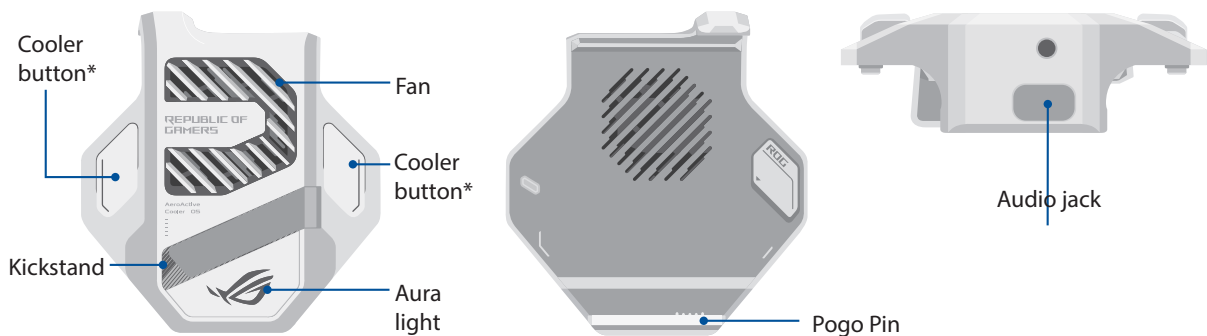
- To avoid network connection and battery issues:
 - DO NOT place a metallic sticker on the antenna area.
 - DO NOT use a metallic protective frame/case on your ROG Phone.
 - DO NOT cover the antenna area with your hands or other objects while using some functions such as making calls or using the mobile data connection.
 - We recommend that you use ASUS-compatible screen protectors. Using non-ASUS-compatible screen protectors may cause your ROG Phone's sensor to malfunction.
-

IMPORTANT!

- We do not recommend using a screen protector as it can interfere with the proximity sensor. If you want to use a screen protector, ensure that it does not block the proximity sensor.
 - Keep the device, particularly the touch screen, dry all the time. Water or other liquids can cause the touch screen to malfunction.
-

AeroActive Cooler features

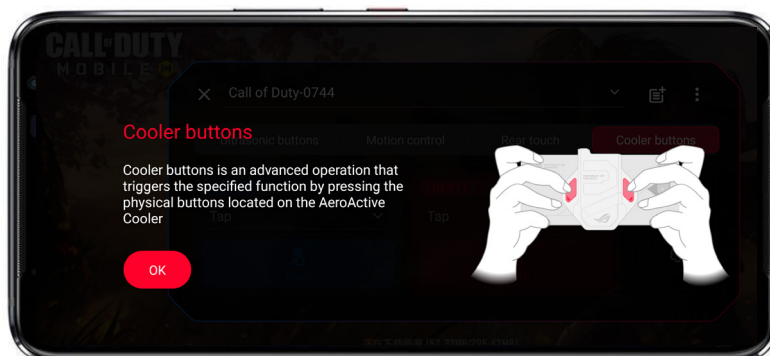
Use the AeroActive Cooler to keep your ROG Phone working at a high frequency during heavy workloads by providing a better thermal solution, and offering the ultimate user experience.



NOTES:

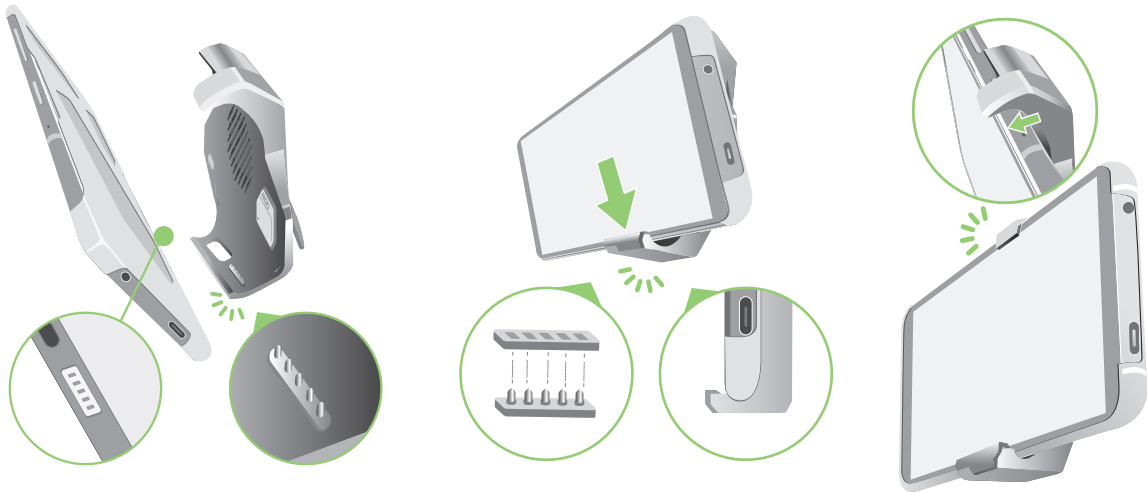
- Only ASUS_I005D comes with the AeroActive Cooler.
 - Connect your AeroActive Cooler to the Pogo Pin of your ROG Phone.
 - You can use your AeroActive Cooler while using the bundled ROG Phone 5.5 Case.
-

* Users can press these buttons to trigger the pre-defined functions.



To install AeroActive Cooler:

1. Align the female Pogo Pin on the side of your phone with the male Pogo Pin on the bottom of your AeroActive Cooler and gently push down your phone.
2. Push your phone backward until you hear a click.



NOTES:

- It is not recommended that you connect other devices to your ROG Phone when you install the phone on the AeroActive Cooler.
- Docking your ROG Phone on an accessory with fan(s) will impact the audio quality when making phone calls and recording.

To use the kickstand of AeroActive Cooler:

Open the kickstand on the back of the AeroActive Cooler to get optimal viewing experience.



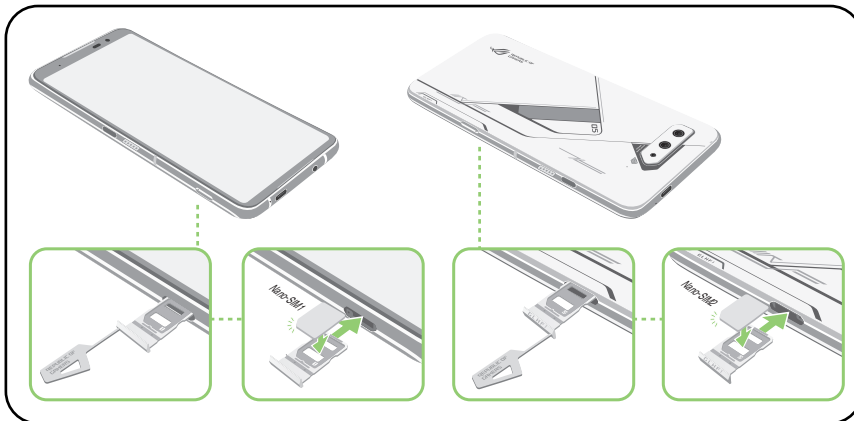
Installing a nano SIM card

Both nano SIM card slots support GSM/GPRS/EDGE, WCDMA/HSPA+/DC-HSPA+, FDD-LTE, TD-LTE, and 5G NR Sub-6 network bands.

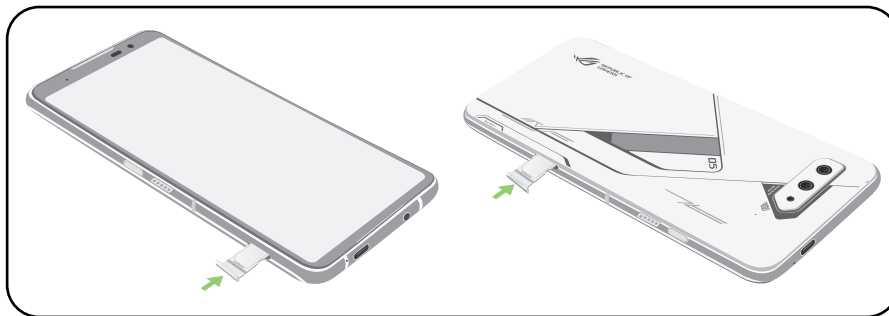
CAUTION! Be extra careful when handling a nano SIM card . ASUS is not responsible for any data loss or damage incurred to your nano SIM card(s).

To install a nano SIM card:

1. Push the bundled eject pin into the hole on the card slot to eject the tray out.
2. Insert the nano SIM card(s) into the card slot(s).



3. Gently push the tray back in until it's securely closed.



NOTES:

- Both Nano SIM card slots support GSM/GPRS/EDGE, WCDMA/HSPA+/DC-HSPA+, FDD-LTE, TD-LTE, and 5G NR Sub-6 network bands. Both Nano SIM cards can connect to VoLTE (4G Calling) service. But only one can connect to 5G NR Sub-6 data service at a time.
- Actual network and frequency band usage depends on network deployment in your area. Contact your telecom carrier if 5G NR Sub-6 support and VoLTE (4G Calling) service are available in your area.

CAUTION!

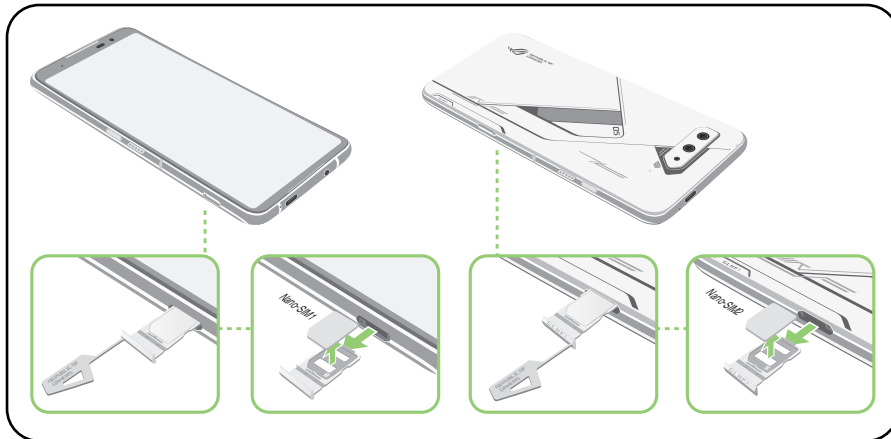
- Do not use sharp tools or solvent on your device to avoid scratches on it.
 - Use only a standard Nano SIM card on your ROG Phone.
-

Removing a nano SIM card

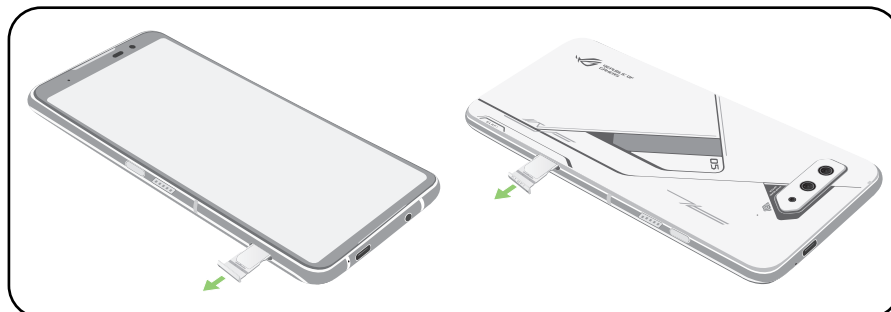
CAUTION! Be extra careful when handling a nano SIM card . ASUS is not responsible for any data loss or damage incurred to your nano SIM card(s).

To remove a nano SIM card:

1. Push the bundled eject pin into the hole on the card slot to eject the tray out.
2. Remove the nano SIM card(s) from the card slot(s).



3. Gently push the tray back in until it's securely closed.



Charging your ROG Phone

Your ROG Phone comes partially charged but you must charge it fully before using it for the first time. Read the following important notices and cautions before charging your device.

IMPORTANT!

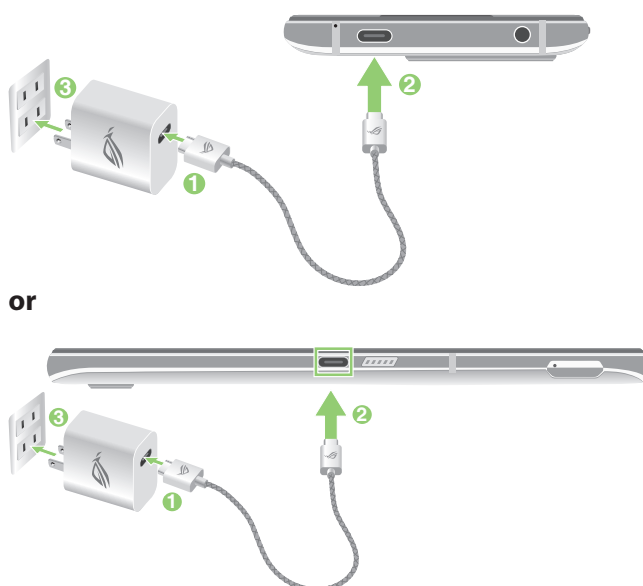
- Peel off the protective film on the AC power adapter and USB Type-C cable before using it with your device.
 - Ensure to plug the AC power adapter to a compatible power outlet. You can plug the AC power adapter to any compatible 100~240 V outlet.
 - The output voltage of the AC power adapter for this device is:
Worldwide version: +5V-20V \approx 3A, 60W (model: AOHA1/A320-200325C), supports fast charging;
India/Brazil version: +5V-20V \approx 3A, 30W (model: AOHA1/A299-200150U).
 - When using your ROG Phone while plugged-in to a power outlet, the power outlet must be near your device and easily accessible.
 - Unplug the USB Type-C cable when your ROG Phone is fully charged.
 - To conserve electricity, unplug the AC power adapter from the power outlet when not in use.
 - Do not use a damaged USB Type-C cable with your device to avoid possible hazard.
 - Do not place heavy objects on top of your ROG Phone.
-

CAUTION!

- While charging, your ROG Phone can become warm. This is normal, however, if your device becomes unusually hot, disconnect the USB Type-C cable from your device and send the device, including the AC power adapter and cable to an ASUS-qualified service personnel.
 - To prevent any damage to your ROG Phone, AC adapter, or USB Type-C cable, ensure that the USB Type-C cable, AC adapter, and your device are connected properly before charging.
-

To charge your ROG Phone:

1. Connect the USB cable to the power adapter.
2. Connect the USB cable to your ROG Phone.
3. Plug the AC power adapter to a grounded power outlet.

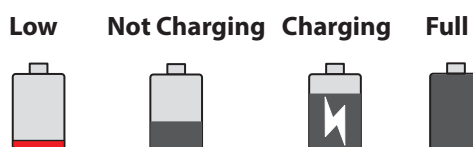


NOTES:

- We recommend that you charge your ROG Phone through one USB Type-C port at a time.
 - Only the USB Type-C port on the left side of your ROG Phone has DisplayPort functionality.
 - If you connect USB Type-C OTG or charging devices to both of the USB Type-C ports on your ROG Phone, the USB Type-C port on the left side of your ROG Phone will become the master and the charging current or OTG device on the bottom port will be limited.
-

IMPORTANT!

- When using your ROG Phone while it is plugged to a power outlet, the grounded power outlet must be near to the unit and easily accessible.
- When charging your ROG Phone through your computer, ensure that you plug the USB Type-C cable to your computer's USB port.
- Avoid charging your ROG Phone in an environment with ambient temperature of above 35°C (95°F).
- Charge your ROG Phone for more than 30 minutes before using it for the first time.
- The status of battery charge is indicated by the following icons:

**NOTES:**

- For safety purposes, use **ONLY** the bundled power adapter and cable to avoid damaging your device and prevent the risk of injury.
 - For safety purposes, use **ONLY** the bundled power adapter and cable to charge your ROG Phone.
-

4. When fully-charged, disconnect the USB cable from your ROG Phone first before unplugging the AC power adapter from the power outlet.
-

NOTES:

- You can use your device while charging but it may take longer to fully charge the device.
 - Charging your device via USB port of a computer may take longer to fully charge the device.
 - If your computer does not provide enough power for charging via USB port, charge your ROG Phone using the AC power adapter plugged to a power outlet instead.
-

Turning your ROG Phone on or off

Turning your device on

To turn your device on, press and hold the power button until your device vibrates and starts up.

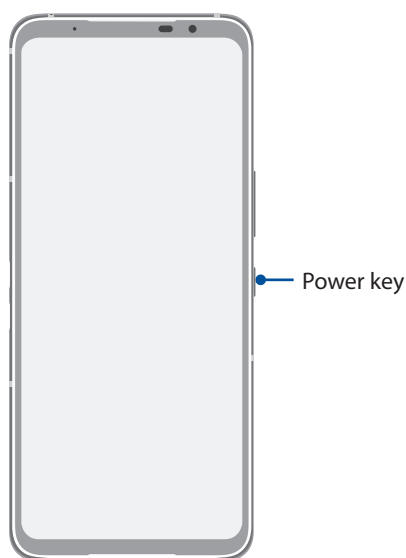
Turning your device off

To turn your device off:

1. If your screen is turned off, press the power button to turn it on. If your screen is locked, unlock the device screen.
2. Press and hold the power button, then when prompted, tap **Power off**.

Sleep mode

To put your device in sleep mode, press the power button once until the screen turns off.



NOTE: When your system is down, press and hold the Volume Down Key + Power Key simultaneously for 8 seconds to restart your phone. If this doesn't work, try again by pressing and holding the keys again for 12 seconds.

Starting for the first time

When you turn your ROG Phone on for the first time, Setup Wizard will guide you through the setup process. Follow the onscreen instructions to select your language, set up your mobile network, Wi-Fi and security features, and sync accounts.

Use your Google or ASUS account to set up your device, if you do not have a Google or ASUS account yet, go ahead and create one.

Google Account

Using a Google account allows you to fully utilize these Android OS features:

- Organize and see all your information from anywhere.
- Automatically backup all your data.
- Leverage Google services conveniently from anywhere.

ASUS Account

Having an ASUS account gets you to enjoy the following perks:

- Personalized ASUS support service and warranty extension for registered products.
- Receive the latest device and firmware updates.

Battery power conservation tips

The battery charge is the lifeline of your ROG Phone. Here are some battery power conservation tips that help preserve the power of your ROG Phone battery.

- Close all running apps that are not in use.
- When not in use, press the power button to put the device in sleep mode.
- Decrease brightness of display.
- Keep the speaker volume to a low level.
- Disable Wi-Fi feature.
- Disable Bluetooth feature.
- Disable the screen auto-rotate feature.
- Disable all auto-sync features in your device.

Using the touchscreen

Use these gestures on the touchscreen to launch apps, access some settings, and navigate your ROG Phone.

Launching apps

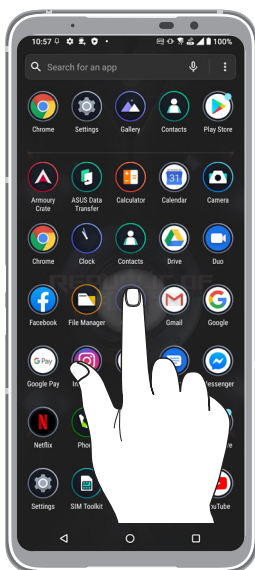
To launch an app, simply tap on it.



Moving or deleting items

Do any of the following:

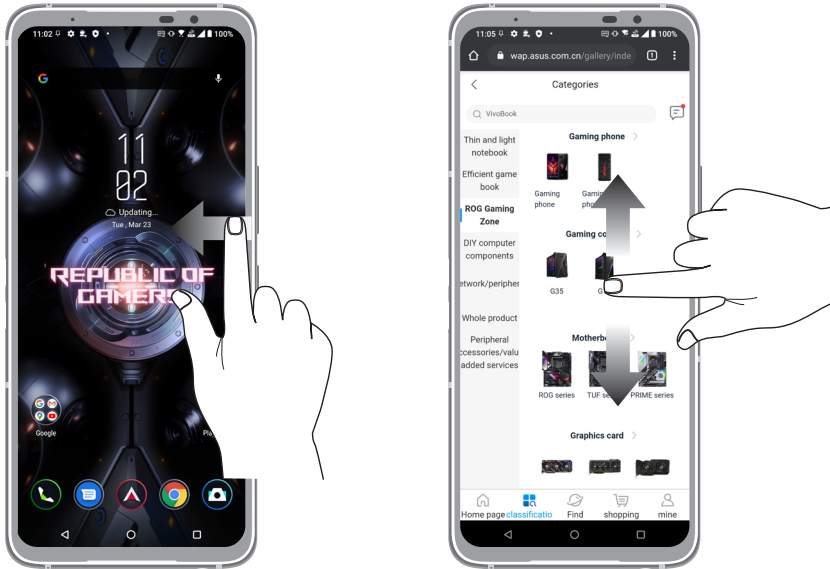
- To move an app or widget, tap and hold then drag it to the location where you want it to be.
- To delete an app or widget, tap and hold it then tap **Uninstall**.



Moving through pages or screens

Do any of the following:

- Swipe your finger to the left or to the right to switch between screens or to open Google Search page.
- Scroll your finger up or down to go through web pages or list of items.



Zooming in

Spread apart your two fingers on the touch panel to zoom in an image in Photos or Maps, or zoom in a web page.



Zooming out

Bring together your two fingers on the touch panel to zoom out an image in Photos or Maps, or zoom out of a web page.



NOTE: You may not be able to zoom in/out of some web pages as these pages may have been designed specifically to fit your mobile screen.

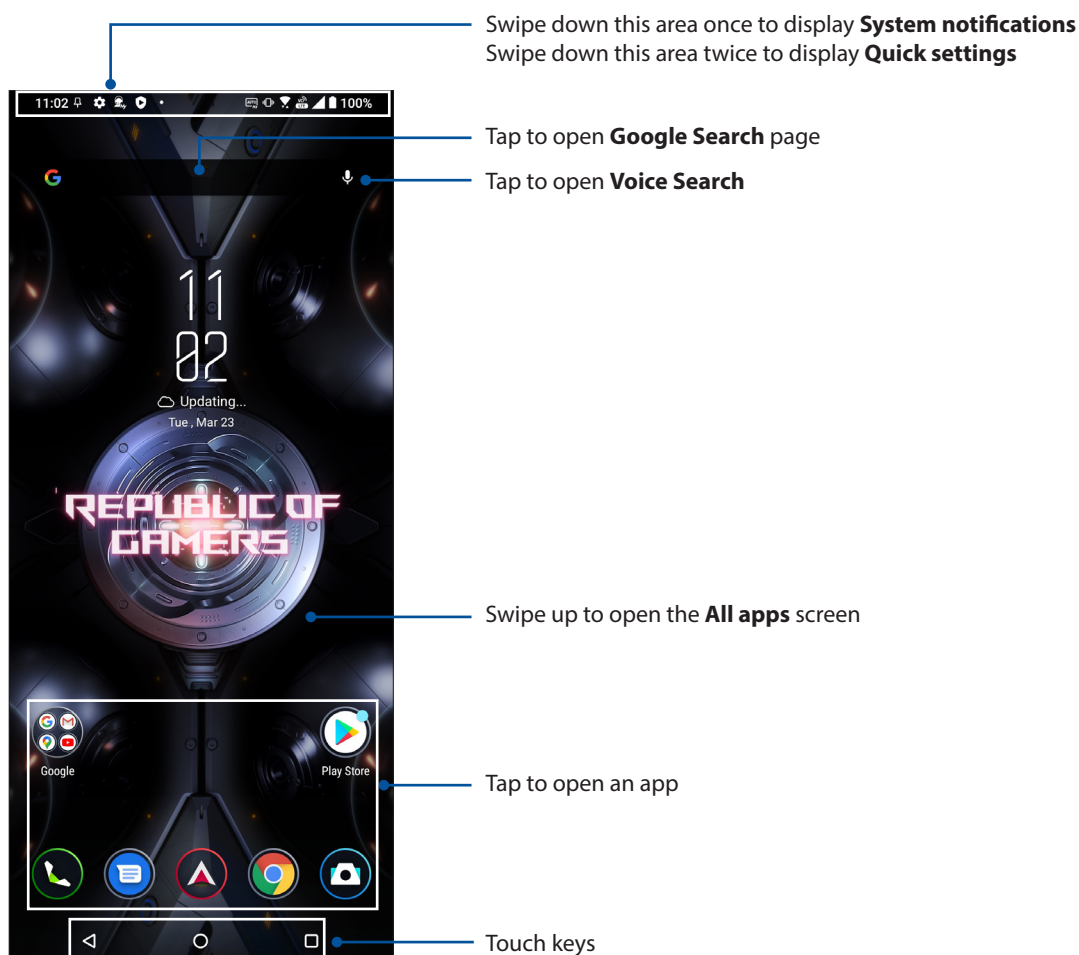
There's no place like Home

2

Asus Home features

Home screen

Get reminders of important events, app and system updates, weather forecasts, and text messages from people who really matter to you, right from your Home screen.

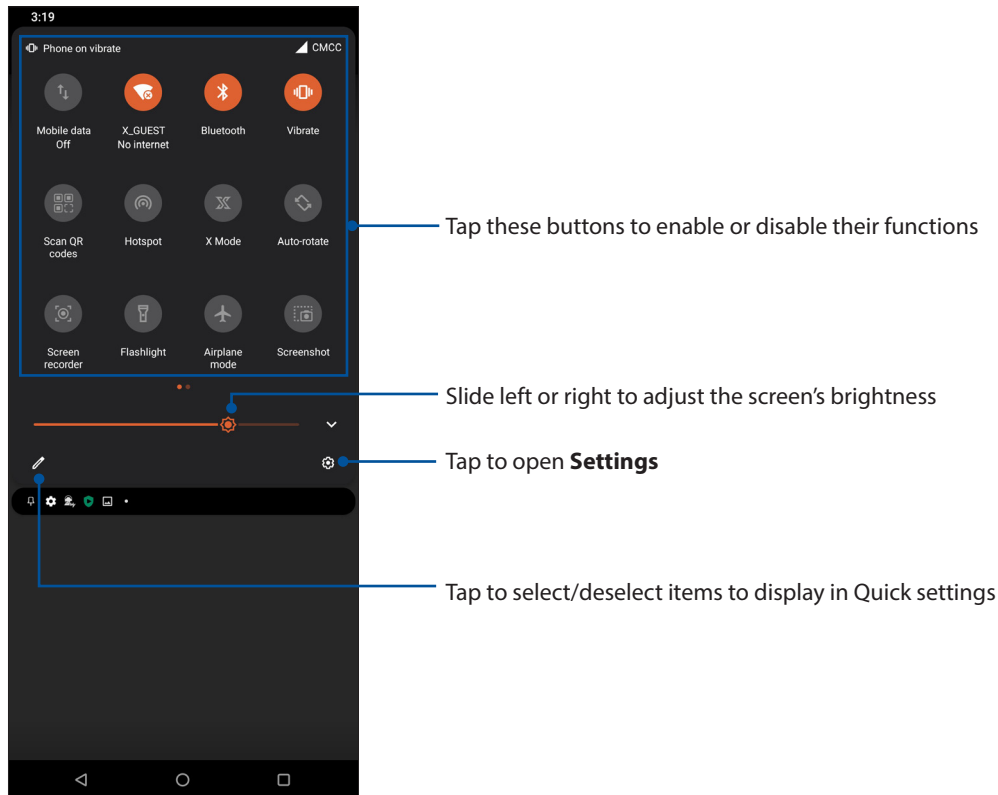


Quick settings

The Quick settings panel provides a one-tap access to some of the wireless features and settings of your ROG Phone. Each of these features are represented by an icon.



To launch the Quick settings panel, swipe down twice from the top of your screen.

NOTE: A blue icon indicates that the feature is currently enabled while a gray icon indicates a disabled feature.



Adding features

To add features from the Quick Settings panel:

1. Launch Quick settings then tap .
2. Swipe up **HOLD AND DRAG TO ADD TILES**.
3. Under **HOLD AND DRAG TO ADD TILES**, tap and drag an icon up to add it to the Quick Settings panel.
4. Tap  to go back and view the current Quick Settings panel.

Removing features

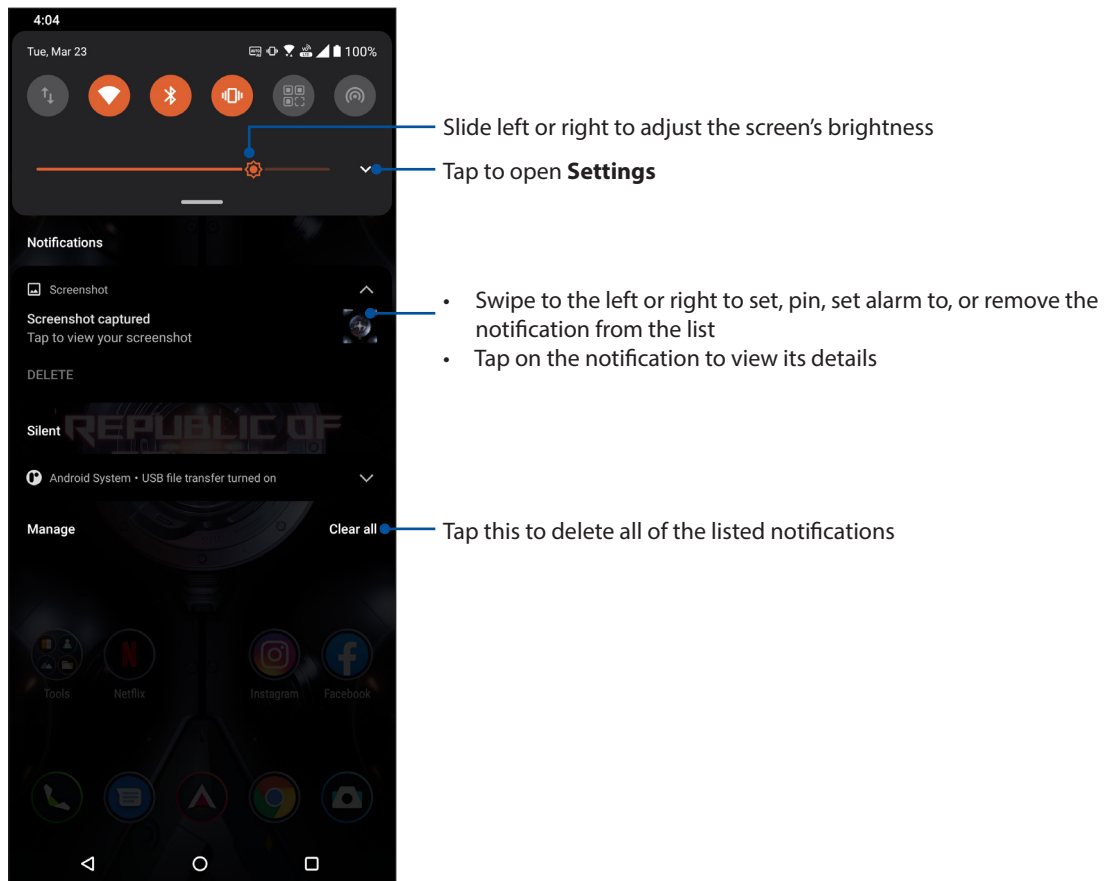
To remove existing features from the Quick Settings panel:

1. Launch Quick settings then tap .
2. Tap and drag an icon below **HOLD AND DRAG TO REARRANGE TILES** to remove it from the Quick Settings panel.

Notifications

From the notifications panel, you can see the latest updates done and system changes made on your ROG Phone. Most of these changes are data and system-related.

To launch the notifications panel, swipe down from the top of your screen.



Personalizing your Home screen

Stamp your own personality on your Home screen. Select an attractive design as your wallpaper, and add widgets for a quick review of important info. You can also add more pages so you can add and quickly access or view more apps or widgets on your Home screen.

To launch the Manage Home screen, tap and hold an empty area on your Home screen.



Widgets

You can put widgets, which are small dynamic apps, on your Home screen. Widgets provide you with quick-views of the weather forecast, calendar events information, battery status, and more.

Adding widgets

To add a widget:

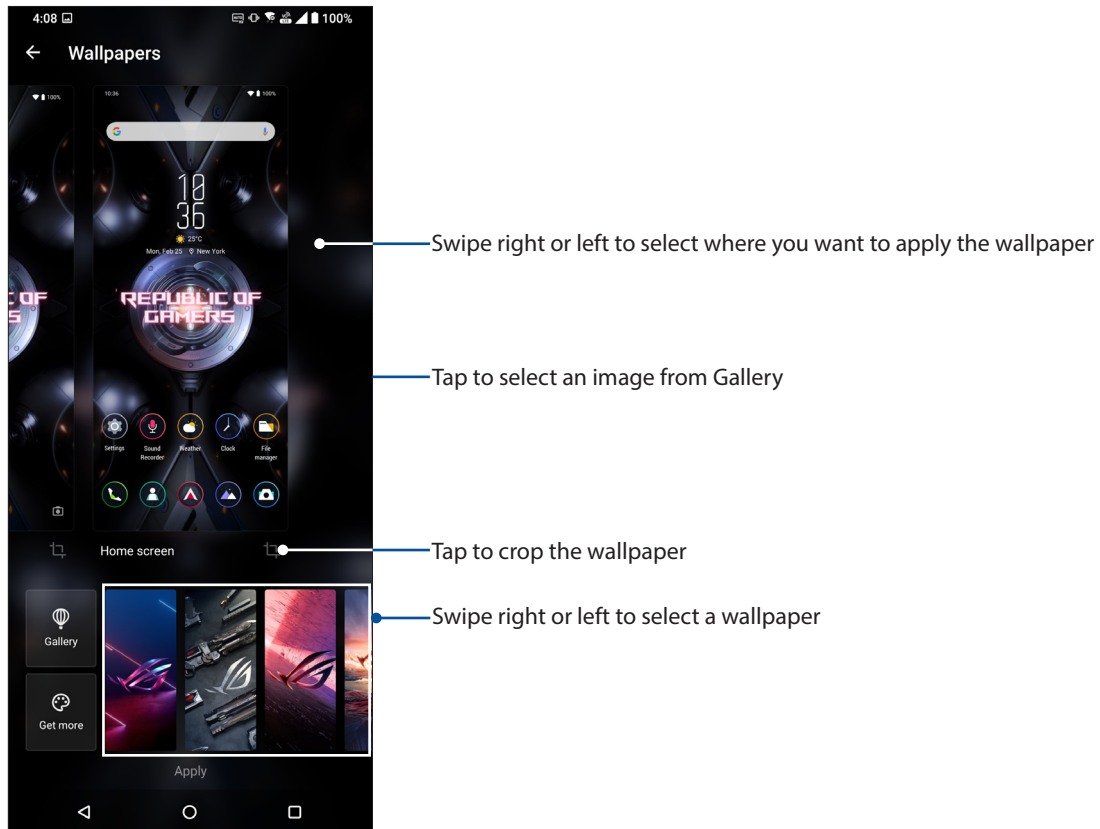
1. Tap and hold an empty area on your Home screen and select **Widgets**.
2. From the Widgets screen, tap and hold a widget, then drag it to an empty area on your Home screen.

Removing widgets

From your Home screen, tap and hold a widget, then drag it to **Remove** on top of your screen.

Wallpapers

Let your apps, icons, and other elements sit on an attractively designed wallpaper. You may add a translucent background tint to your wallpaper for readability and clarity. You can also select an animated wallpaper to make your screen come alive.



Applying wallpaper

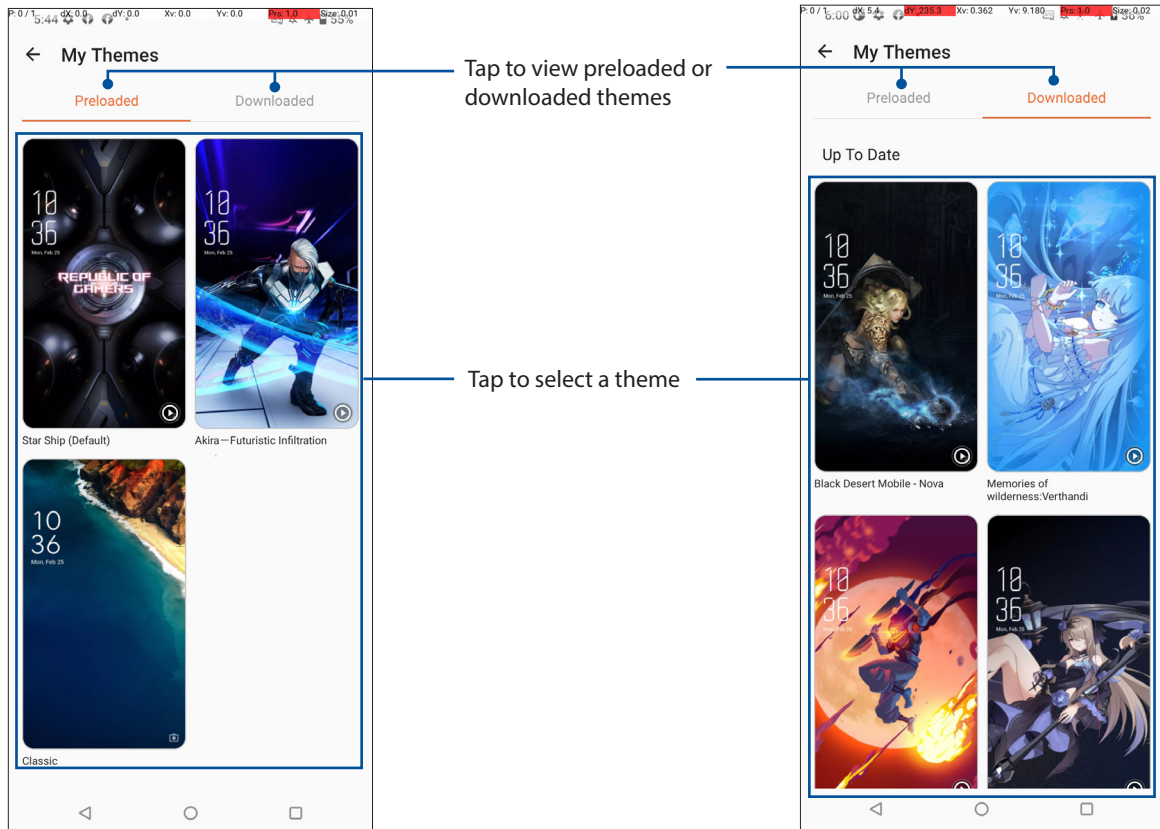
To apply wallpaper:

1. Tap and hold an empty area on your Home screen and select **Wallpapers**.
2. Select to set wallpaper to **Lock screen** or **Home screen**.
3. Select a wallpaper, and then tap **Apply**.

NOTE: You can also set up your wallpaper settings from **Settings > Themes & wallpapers > Wallpaper**.


My Themes

My Themes provides a variety of game theme options for you to have sets of specially designed icons, wallpapers and other elements. You can select your favorite game theme to make your screen distinctive.



Applying My Themes

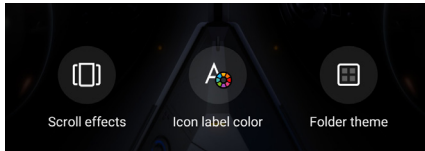
To apply My Themes:

1. Do either of the following to launch the Settings screen:
 - Launch Quick Settings then tap .
 - Swipe up on your Home screen then tap **Settings**.
2. Tap **Themes & wallpapers > My Themes**.
3. Select a preloaded or downloaded theme.

Editing your Home screen

You can extend your Home screen, select a scroll effect, change the icon label color, and select the folder theme.


1. Tap and hold an empty area on your Home screen and select **Edit Home screen**.
2. Tap a feature to edit your Home screen.



Setting up the date and time

By default, the date and time displayed on your Home screen automatically syncs with your mobile provider's settings.

To change the date and time settings:


1. Launch the Settings screen by doing either of the following:
 - Launch Quick Settings then tap .
 - Swipe up on your Home screen then tap **Settings**.
2. Scroll down the Settings screen and select **System > Date & time**.
3. Slide **Use network-provided time** and **Use network-provided time zone** to off.
4. Tap **Date** and **Time** to adjust the date and time.
5. Tap **Time Zone** to select the time zone.
6. You can opt to use the 24-hour format, if you prefer.

NOTE: See also [Clock](#).

Setting up your ringtone and alert sounds

Set up the sound for your phone ringtone, notifications such as text messages, emails, and event alerts. You can also choose to enable or disable the dial pad touch tones, touch sounds, screen lock sound, or you can choose to have your ROG Phone vibrate when you tap on it.

To set up the sound settings:

1. Launch the Settings screen by doing either of the following:
 - Launch Quick Settings then tap .
 - Swipe up on your Home screen then tap **Settings**.
2. Select **Sound & vibration** and set up your preferred sound settings.


Lock Screen

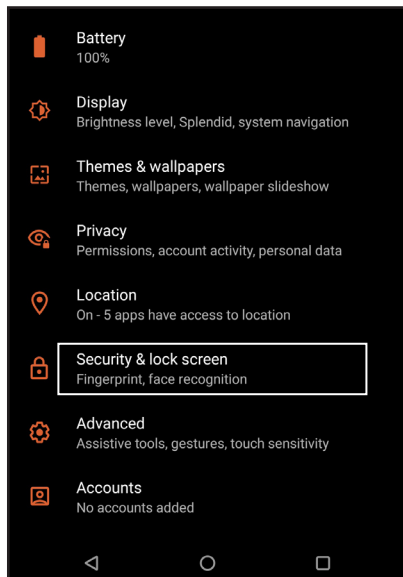
By default, the lock screen appears after turning on your device and while waking it up from sleep mode. From the lock screen, you can proceed to your device's Android® system by swiping on your touch screen panel.

Your device's lock screen can also be customized to regulate access to your mobile data and apps.

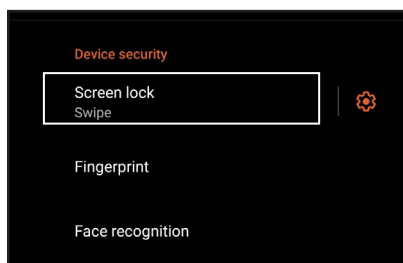
Customizing your lock screen

If you want to change your lock screen settings from the default **Swipe** option, refer to the following steps:

1. Launch the Settings screen by doing either of the following:
 - Launch Quick Settings then tap .
 - Swipe up on your Home screen then tap **Settings**.
2. Select **Security & lock screen**.



3. In the next screen, tap **Screen lock**.



4. Tap the screen lock option you would like to use.

NOTE: For more details, see [Securing your ROG Phone](#).

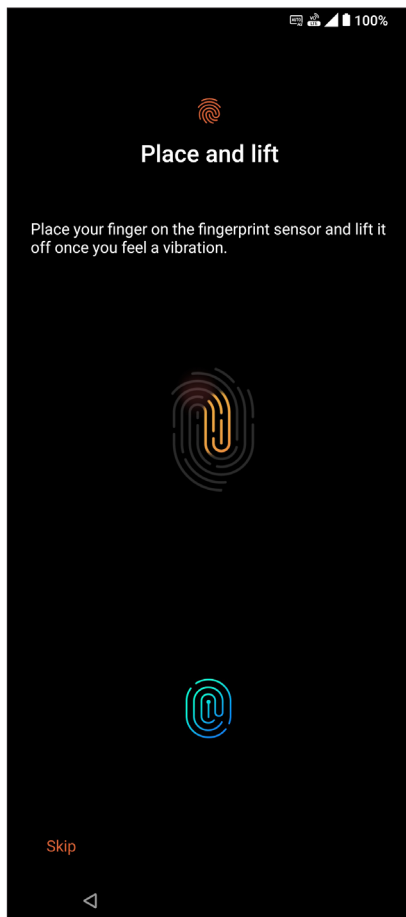
Fingerprint ID sensor

Fingerprint ID sensor prevents others from using your ROG Phone without your permission. You can use your fingerprint to unlock your device, access your phone calls and data. When you set up your fingerprint ID, you also need to set up your screen lock method for device startup.

Starting your ROG Phone for the first time

To set up your fingerprint ID when using your ROG Phone for the first time:


1. Ensure that the fingerprint identification module and your finger are clean and dry.
2. From the Welcome page, follow the on-screen instructions to the **Protect your phone** page and tap **Set up fingerprint**.
3. Tap **Continue** to choose a screen lock method, and then follow the instructions to the **Locate fingerprint scanner** page, and tap **Next**.
4. Find the fingerprint scanner on the front of your device, adjust your finger and try to cover different areas of your finger repeatedly until your fingerprint is captured.

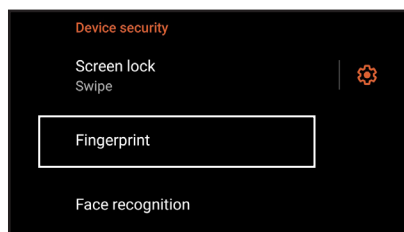


5. Tap **Next** to complete the setup.

Setting up fingerprint ID from Settings

To set up your fingerprint ID from **Settings**:

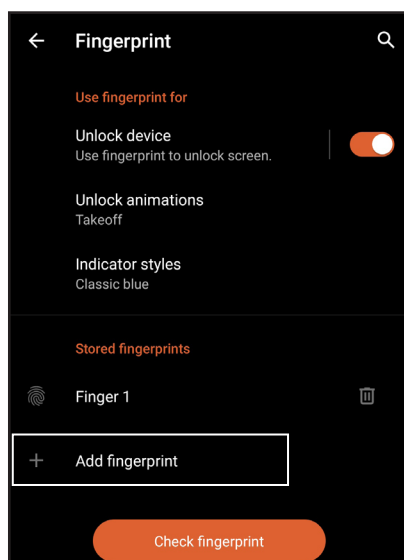
1. Ensure that the fingerprint scanner and your finger are clean and dry.
2. Launch the Settings screen by doing either of the following:
 - Launch Quick Settings then tap .
 - Swipe up on your Home screen then tap **Settings**.
3. Scroll down the **Settings** screen and select **Security & lock screen > Fingerprint**.



4. Unlock your phone if it's secured. If not, follow the instructions to set up your backup screen lock method.

NOTE: For more details, see [Securing your ROG Phone](#).

5. Tap **Add fingerprint**.




6. Repeatedly place-and-lift your finger on the scanner until your fingerprint is captured.
7. Tap **Done** to complete the setup.

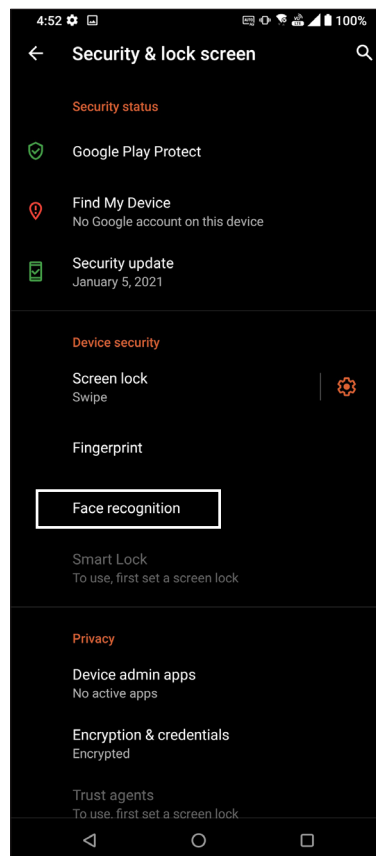
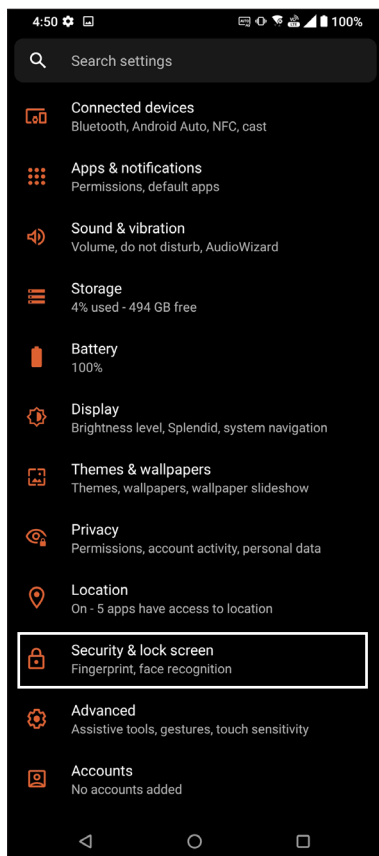
Face Unlock

Face unlock prevents others from using your ROG Phone without your permission effortlessly. You can light up your ROG Phone's screen and look at it to unlock your device, access your phone's home screen in one second. When you set up your face unlock, you also need to set up your screen lock method for device startup.

Setting up face unlock from Settings

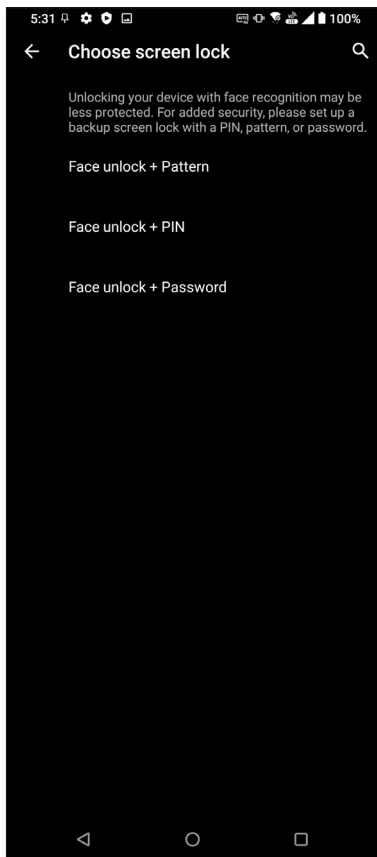
To set up face unlock from **Settings**:

1. Launch the Settings screen by doing either of the following:
 - Launch Quick settings then tap .
 - Swipe up on your Home screen and tap **Settings**.
2. Scroll down the Settings screen and select **Security & lock screen > Face recognition**.

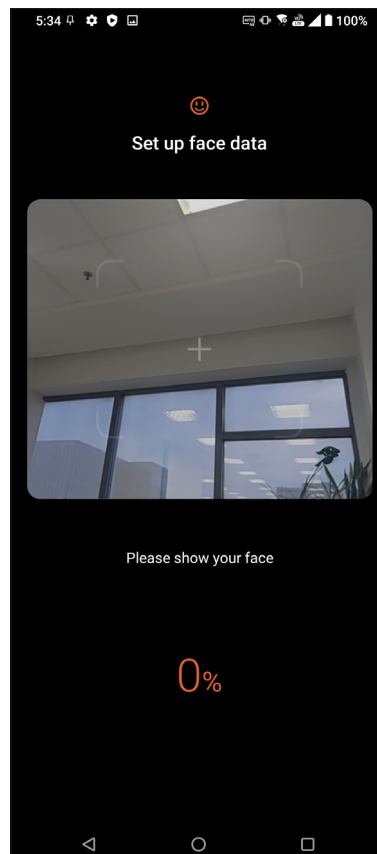
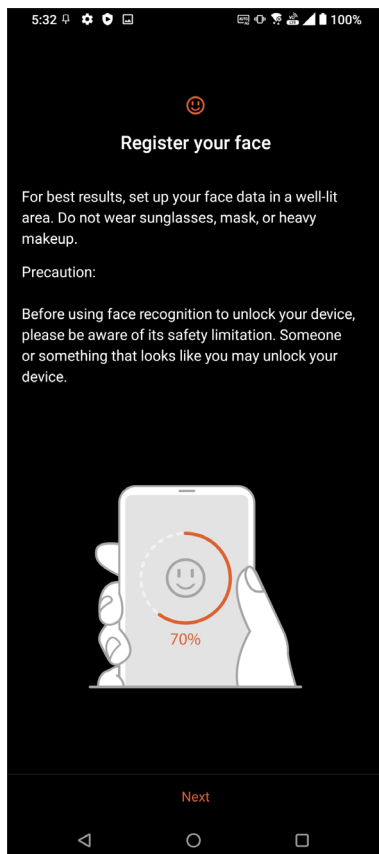


3. Tap **Continue**.

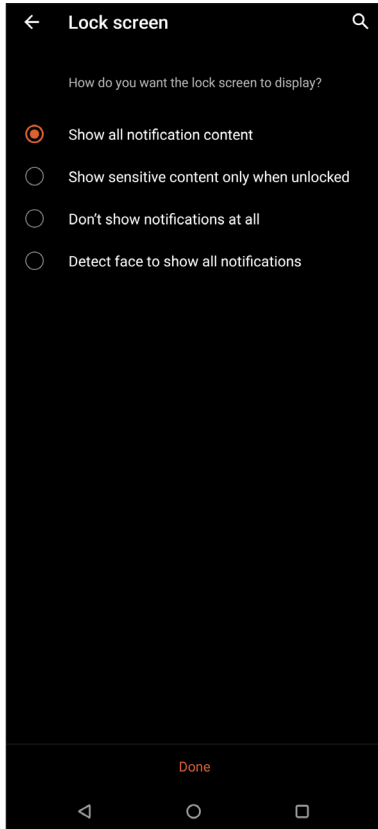
4. Follow the instructions to set up your backup screen lock method.



5. Tap **Next** and follow the instructions to register your face.



6. Select how you want to display your notifications on the lock screen, then tap **Done**.



7. When finished, tap **Turn On** to enable face recognition to unlock your phone.



NOTES:

- Show your mouth, nose and opened eyes while using face unlock feature.
- Wearing sunglasses or insufficient light will lead to failure of face unlock.

Work hard, play harder

3

Chrome


Chrome for Android lets you enjoy the same fast, secure and stable web browsing experience as that on the desktop Chrome. Sign in to your Google account to sync tabs, bookmarks, and browsing history across all your devices. If you don't have a [Google account](#), register for one.

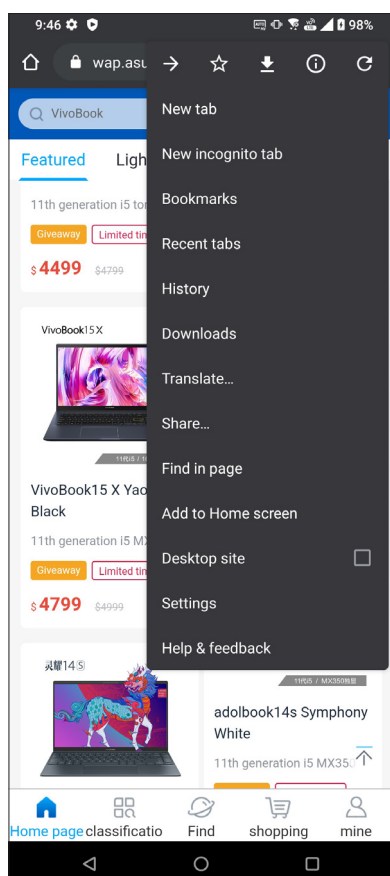
NOTE: For details on creating a Google account, see [Gmail](#).

IMPORTANT! Before doing any Internet surfing or Internet-related activities, ensure that your ROG Phone is connected to a Wi-Fi or mobile network. For more details, see [Staying connected](#).

Launching Chrome


From your Home screen, do any of the following to launch Chrome:

- Tap .
- Swipe up on your Home screen then tap **Chrome**.



Sharing pages




Share interesting pages from your ROG Phone to others via an email account, cloud storage account, Bluetooth, or other ROG Phone apps.

1. Launch Chrome.
2. From a web page, tap  > **Share...**
3. Tap to select a way to share the page.

Bookmarking pages


Bookmark your favorite pages or websites so you can go back and browse them again.

To bookmark a page:

From the page, tap  > . To view your favorite pages, tap  > **Bookmarks**, then select the page you want to view or access.

Clearing the browsing data

Clear the browsing data that are temporarily stored in your ROG Phone to improve the loading performance of your Chrome browser. The browsing data includes browsing history, cache, cookies/site data, saved passwords, and autofill data.

1. Launch the browser.
2. Tap  > **Settings** > **Privacy** > **Clear browsing data**.
3. Select the browsing data that you want to delete.
4. When done, tap **Clear data**.

Gmail

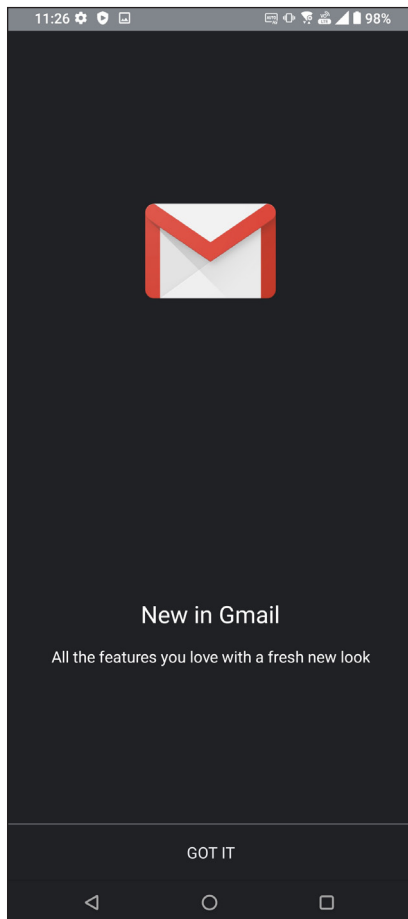
Use Gmail to set up your Google account to get into Google-related services and apps as well as receive, send, and browse emails right from your ROG Phone. You can also set up other email accounts such as Yahoo or your work email account via Gmail.

IMPORTANT! Your ROG Phone must be connected to a Wi-Fi or mobile network so you can add an email account or send and receive emails from added accounts. For more details, see [Staying connected](#).

To set up your Google account:

1. From your Home screen, do either of the following to launch Gmail:
 - Tap **Google > Gmail**.
 - Swipe up on your Home screen and tap **Gmail**.
2. Tap **GOT IT** and then **Add an email address**.
3. Select **Google**.
4. Enter your email address. To create a new Google account, tap **Create account**.
5. Follow the next steps to sign in to your Google account.

NOTE: If you want to set up your work account on your ROG Phone, ask for the email settings from your network administrator.






Google Calendar

Bring your schedule to life and keep track of all your important events or reminders. Events that you create or edit will automatically sync with all Google Calendar versions that you've logged into.



Creating events

To create an event:

1. From the Home screen, do either of the following to launch Calendar:
 - Tap **Google** > **Calendar**.
 - Swipe up on your Home screen and tap **Calendar**.
2. Tap **+** then tap **Event**.
3. Enter your event name, and select the date and time for the event. You may set the event as an all-day or recurring event.
 - All-day event: From the **All-day** field, move the slider to the right.
 - Recurring event: Tap **More options** > , then select how often you want the event to recur or repeat.
4. To set the time zone, tap **More options** > , then enter the country whose time zone you want displayed.
5. From the **Add location** field, enter the venue or location of the event.
6. Tap , then you may select or set the time or day to get a notification or reminder about the event.
7. From the **Invite people** field, enter the email addresses of your guests to the event.
8. You may also add note or attachment from the **Add note** or **Add attachment** field.
9. Once finished, tap **Save**.


Editing or removing events

To edit or remove an event:

1. From the Home screen, tap **Google** > **Calendar**.
2. Tap the event that you want to edit or delete.
3. To edit the event, tap  and make the necessary changes. To remove the event, tap  > **Delete**, then tap **Delete** to confirm the deletion.



Creating reminders

To create a reminder:

1. From the Home screen, tap **Google > Calendar**.
2. Tap **+** then tap **Reminder**.
3. Enter your reminder name.
4. Set the date and time for the reminder. You may set the reminder as an all-day or recurring reminder.
 - All-day reminder: From the **All day** field, move the slider to the right.
 - Recurring reminder: Tap , then select how often you want the reminder to recur or repeat.
5. Once finished, tap **Save**.

Editing or removing reminders

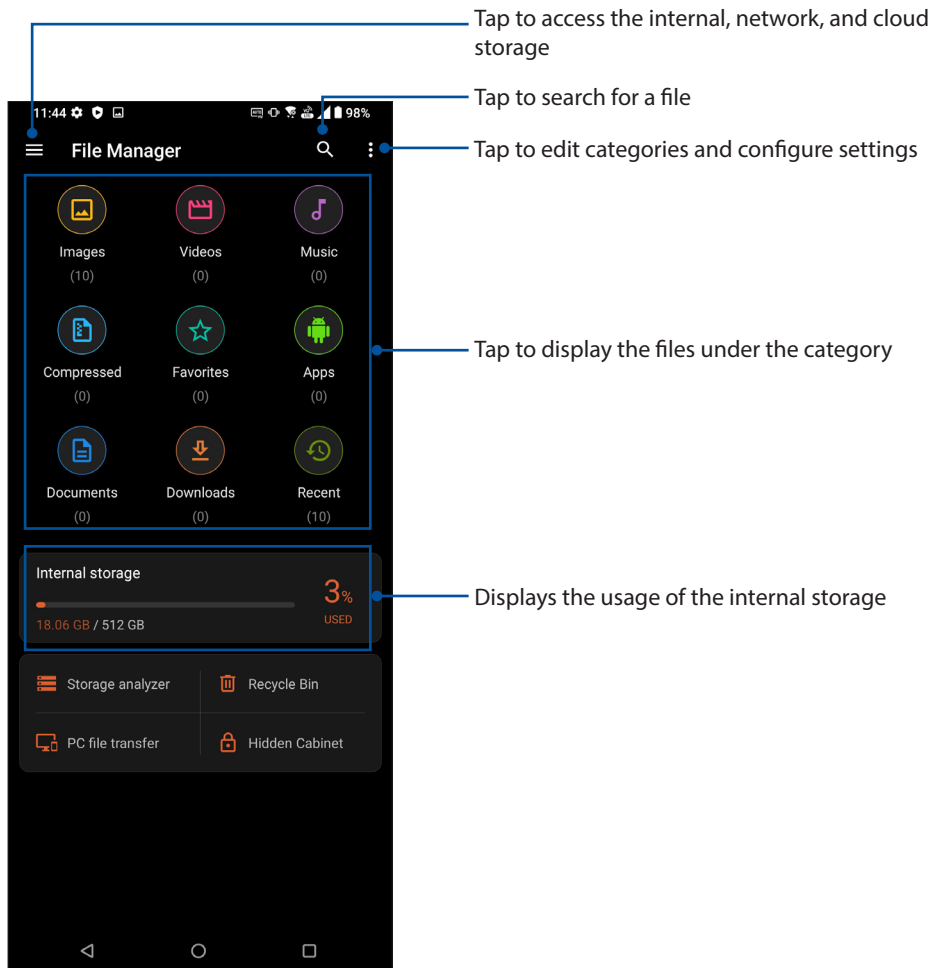
To edit or remove a reminder:

1. Tap **Google > Calendar**.
2. Tap the reminder that you want to edit or delete.
3. To edit the reminder, tap  and make the necessary changes. To remove the reminder, tap  > **Delete**, then tap **Delete** to confirm the deletion.

File Manager

Using File Manager allows you to easily locate and manage your data on the internal storage of your Phone.

To launch File Manager, swipe up on your Home screen then tap **File Manager**.



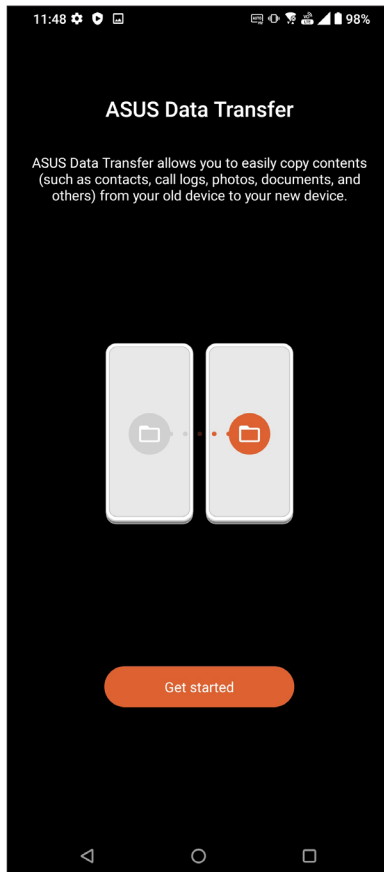
IMPORTANT! Before accessing files saved on the network and cloud storage, ensure that Wi-Fi or mobile network is enabled on your Phone. For details, see [Staying connected](#).

ASUS Data Transfer

Wirelessly transfer your data such as contacts, call logs, or photos from your old mobile device to your ROG Phone.

To use ASUS Data Transfer:

1. Swipe up on your Home screen then tap **ASUS Data Transfer**.
2. Tap **Get Started** then follow the onscreen instructions to complete the data transfer process.



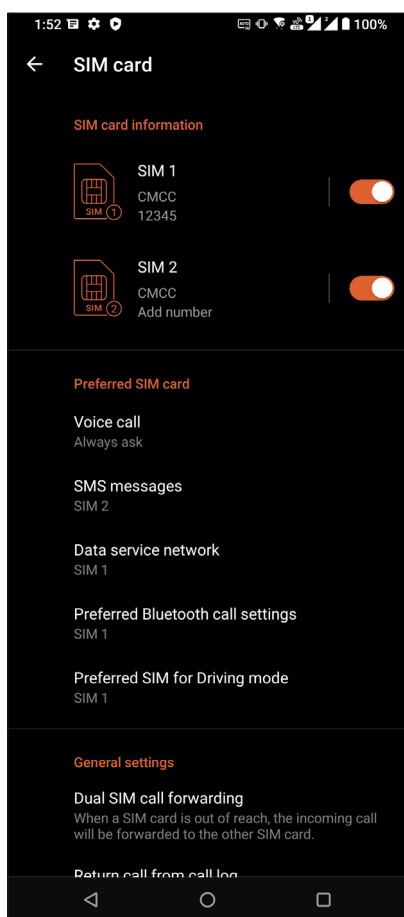
Keeping in touch

4

Call in style

Dual SIM feature

The dual SIM feature of your ROG Phone lets you manage the settings of the installed Nano SIM cards. With this feature, you can enable/disable Nano SIM cards, assign SIM names, or set one as a preferred network.



Renaming your Nano SIM cards

Change the names of your Nano SIM cards on your ROG Phone so that you can identify them easily.

To change the names of your Nano SIM cards, tap **SIM 1** or **SIM 2** then key in the names for your Nano SIM cards.

NOTE: If your SIMs have different mobile service providers, we recommend you to use the names of these providers for your SIM names. If both SIMs have the same mobile service provider, we recommend you to use the mobile numbers for your SIM names.

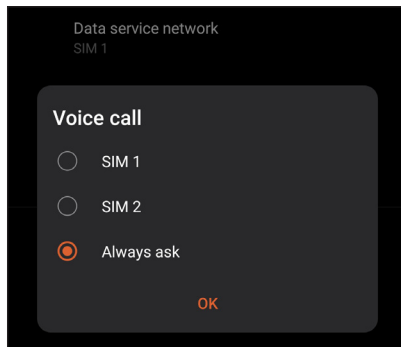
Assigning a preferred SIM card

Assign a SIM card as your preferred SIM for voice calls, SMS messages, and data services.

SIM card for voice calls

When you make a call, your ROG Phone automatically uses the preferred SIM card to connect the call.

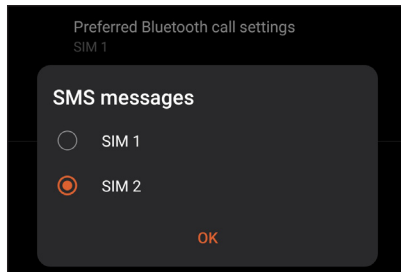
To assign a SIM card for voice calls, tap **Voice call** then tap the SIM that you want to use.



IMPORTANT! You can only use this feature if you make a call from your contacts list.

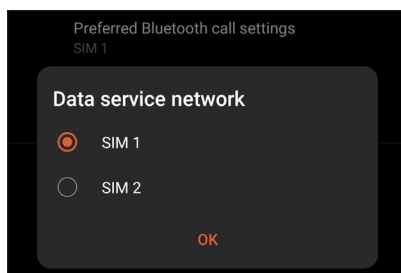
SIM card for SMS messages

To assign a SIM card for SMS messages, tap **SMS messages** then select from **SIM 1** or **SIM 2**.



SIM card for data service

To assign a SIM card for data service, tap **Data service network** then select from **SIM 1** or **SIM 2**.




Making calls

Your ROG Phone offers you many ways to make a call. Call your friends from your contacts list, smart dial to quickly place a call, or enter a speed-dial number to call your frequently-called contact.

NOTE: Organize your contacts in the Contacts app. For details, see [Managing contacts](#).


Launching the Phone app

From your Home screen, do either of the following to launch the Phone app:

- Tap .
- Swipe up on your Home screen then tap **Phone**.

Dialing a phone number

Use the Phone app to directly dial a phone number.

1. From your Home screen, tap  then tap the number keys.
2. Select from call buttons **SIM 1** or **SIM 2** to dial the number.


NOTE: The labels of the call buttons may vary depending on the setting that you made to your SIM cards. For more details, see [Dual SIM feature](#).

Dialing an extension number

When you need to call an extension number, you can do any of these steps to skip the voice prompts.


Prompting for confirmation of an extension number

You can insert a confirmation prompt for the extension number after dialing the main number.

1. From the Phone app, enter the main number.
2. To insert a confirmation prompt, tap and hold # until a semi-colon (;) appears.
3. Enter the extension number.
4. Select from call buttons **SIM 1** or **SIM 2** to make the call.
5. When prompted, tap **Yes** to confirm the extension number.
6. Tap  to end the call.

Auto-dialing an extension number

You can insert a short or long pause after dialing the main number, then the extension number is dialed automatically.

1. From the Phone app, enter the main number.
2. To insert a pause, tap and hold * until a comma (,) appears.
3. Enter the extension number.
4. Select from call buttons **SIM 1** or **SIM 2** to place the call.
5. Tap  to end the call.

Smart dialing your contacts


As you enter the first few numbers or letters of your contact's name, Smart Dial filters through your contacts list or call logs and provides you with possible matches. You can check if the contact you're trying to reach is on the list of possible matches, then you can quickly place that call.

1. Launch the Phone app then enter the number or name of the contact in the Search field.
2. From the list of possible matches, tap the contact you wish to call. If the contact is not on list, enter the complete number or name of the contact.
3. Select from call buttons **SIM 1** or **SIM 2** to make the call.

NOTE: The labels of the call buttons may vary depending on the setting that you made to your SIM cards. For more details, see also [Dual SIM feature](#).


Calling from Contacts app

Use the Contacts app to make a call from your contacts list.

1. Launch the Contacts app.
2. Tap the contact name then tap the number that you wish to dial.
3. If there are two SIM cards installed, tap the SIM card from which you want to make the call.
4. Tap  to end the call.

Calling your favorite contacts




When you add a contact to your Favorites list, you can quickly call the contact from the Contacts app.

1. Launch the Contacts app.
2. Tap **Groups** > **Favorites** to display your Favorites list, then tap your favorite contact whom you want to call.
3. Tap  to end the call.

Receiving calls

The touch screen of your ROG Phone lights up when there is an incoming call. The display of the incoming call also varies, depending on the status of your ROG Phone.

Answering calls



Slide  to  to answer or to  to reject the call.


Managing your call logs

From your call logs, you can call back your missed calls, save calls to your contacts list, or redial your recently-called number or contact.

Saving calls to Contacts


You can add a call/number from your call logs to your contacts list.

1. From the Phone app, tap **Recents** to display your call logs.
2. Tap  beside the number that you want to add to your contacts list.
3. Tap  at the upper right corner of your screen, and then tap **Add to contacts**.
4. Tap **Create new contact** to add a new entry to your contacts list.

Tap **Add to an existing contact**, select a contact, choose whether to overwrite the contact's number with this new one or add a new entry, then tap .

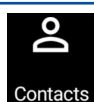
Redialing your last-called number

To redial your last-called number:

1. From the Phone app, tap **Recents** to display your call logs.
2. Tap your last-called number to redial the number.
3. If there are two SIM cards installed, tap the SIM card from which you want to redial the number.
4. Tap  to end the call.

Other call options

During an active call, tap any of the possible call options for when a call is in progress.



Contacts

Opens the Contacts app.



Conference call

When you have subscribed to a conference call service with your mobile service provider, this icon allows you to add a contact or contacts in an active call.

NOTE: The number of participants in the conference call depend on your conference call subscription. You can inquire from your mobile service provider about this service.



Record

Records an active call.

IMPORTANT! Before recording an active call, it is dictated by most local laws to ask permission from the other person or persons on the other line.

NOTE: For more details, refer to the section [Recording calls](#).



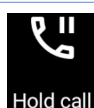
Speakerphone

Turns the speakerphone on or off.



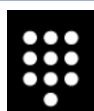
Microphone

Turns the microphone for the active call on or off. When the microphone is off or in mute mode, you can hear the caller but the caller can't hear you.



Hold call

Puts an active call on hold.




Keypad

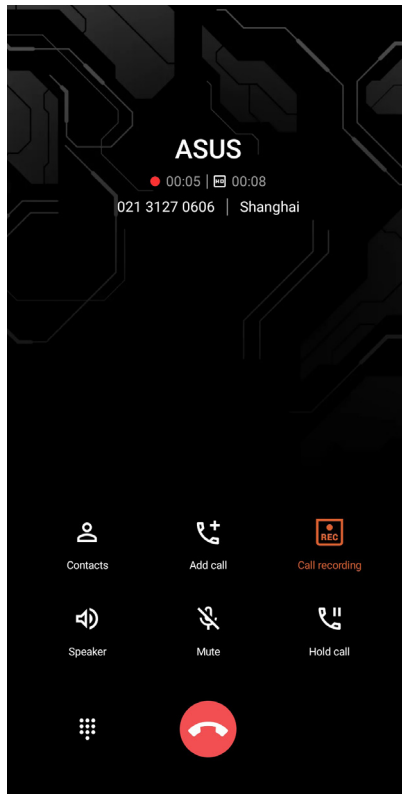
Brings up the keypad.



Recording calls

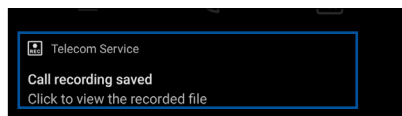
Your ROG Phone allows you to record a conversation for future reference or information.

1. Call a contact or dial a number.
2. Tap  to record the call.

IMPORTANT! Before recording a call, ensure that you ask for permission from the other party or parties.



3. To stop recording, tap . This  icon appears on the system notification bar.
4. Swipe down from the top of the screen, and then tap **Call recording saved** notification to view the recorded conversation.




Managing contacts

Organize your contacts and easily stay in touch with them via calls, SMS messages, emails, or social networks. Group your contacts as Favorites to quickly get in touch with them, or group them as VIPs to get notified about any upcoming events, missed calls, or unread messages.

You can also sync your contacts with your email or social network accounts, link contacts' info for easy access in one place, or filter the contacts you want to keep in touch with.

To launch the Contacts app, swipe up on your Home screen then tap **Contacts**.

Contacts Settings


Select how you would want to display your contacts from the Contacts settings. Such display options include displaying only those contacts with phones, sorting list by first/last name, or viewing contact names as first/last names first. To set up your Contacts settings, tap  > **Settings** from the Contacts app.

Setting up your profile

Make your ROG Phone truly your own and set up your profile info.


1. Launch the Contacts app then tap **Set up my profile** or **Me**.

NOTE: Me appears when you've set up your Google account on your ROG Phone.

2. Fill in your info such as mobile or home number. To add other info, tap **Add another field**.
3. When you've completed your info, tap .


Adding contacts

Add contacts to your device, corporate, Google, or other email accounts and fill in more important contact information such as contact numbers, email addresses, special events for VIPs, and more.

1. Launch the Contacts app then tap  .
2. Select **Device**.


NOTES:

- You can also save the contact to your SIM card or an email account.
 - If you don't have an email account, tap **Add account** then create one.
-

3. Fill in the necessary information such as name, mobile or home number, and email address.
4. If you want to add other contact information, tap **Add another field**.
5. When you've completed the info, tap  .

Adding an extension number to a contact number

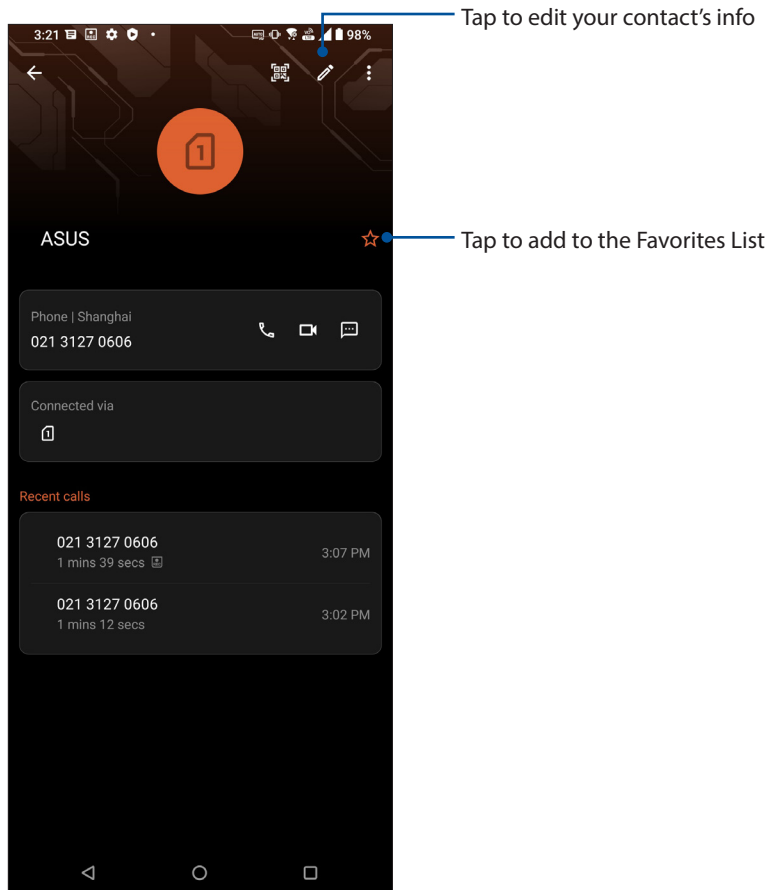
You can add a contact's extension number to skip the voice prompts when making a call.

1. In the contact's information screen, enter the contact's main number and extension number in either of these two ways:
 - Insert a comma (,) after the main number, then enter the contact's extension number. There'll be a short pause before the extension number is dialed automatically. To extend the pause, tap **Pause** to insert another comma.
 - Insert a semi-colon (;) after the main number, then enter the contact's extension number. When dialing the contact number, you'll be prompted to confirm the extension number. Tap **Yes** on the confirmation message.
2. When you've completed the info, tap  .

Customizing your contact's profile


Edit your contact's info, add a photo, set a ringtone, or take a photo as a cover for your contact's profile.

1. Launch the Contacts app then select the contact whose info or profile you want to edit or customize.
2. Make the changes from the contact's profile page.



Marking your favorite contacts

Set your frequently-called contacts as your favorites to be able to call them quickly from the Phone app.

1. Swipe up on your Home screen then tap **Contacts**.
2. Select the contact that you want to mark as a favorite.
3. Tap . The contact is added to your Favorites List in the Contacts app.





NOTES:

- To view your Favorites list, swipe up on your Home screen then tap **Contacts > Groups > Favorites**.
 - For more details, refer to the section [Calling your favorite contacts](#).
-

Managing your block list


Blocking numbers

Create your list of blocked numbers to avoid receiving any unwanted calls or messages. Your blocked calls and messages will be saved to the Block List archive.

1. Swipe up on your Home screen then tap **Phone** then tap  > **Settings** > **Call blocking & block list** > **Block List**.
2. Tap , then do any of the following:
 - To block a contact, tap **Choose from contacts**, then select the contact you want to block from your contacts list. When done, tap .
 - To block a number from the recent call logs, tap **Choose from recent call logs**, then select the contact you want to block from your contacts list. When done, tap .
 - To block a number, tap **Enter a number** then enter the number that you want to block. When done, tap **OK**.
 - To block a SIP number, tap **Enter a SIP number** then enter the number that you want to block. When done, tap **OK**.

Unblocking numbers

You may remove a blocked number from your list and receive calls or messages from the number again.

1. Swipe up on your Home screen then tap **Phone** then tap  > **Settings** > **Call blocking & block list** > **Block List**.
2. Tap the contact or number that you want to unblock then tap **Remove from block list**. When done, tap **OK**.


Social networking with your contacts

Integrating the social network accounts of your contacts makes it easier for you to view their profiles, news, and social feeds. Stay updated with the activities of your contacts in real time.

IMPORTANT! Before you can integrate social network accounts of your contacts, you need to log in to your social network account and sync its settings.

Syncing your social network account

Sync your social network account to add the social network accounts of your contacts to your ROG Phone.



1. Launch the Settings screen by doing either of the following:
 - Launch Quick Settings then tap .
 - Swipe up on your Home screen then tap **Settings**.
2. From the **Settings** screen, tap your social network account under **Accounts** section.
3. Slide on **Automatically sync app data** to sync the social network accounts of your contacts.
4. Launch the Contacts app to view your contacts list. Tap the contact, you will see which social network the contact is from.

Send messages and more


Messages

Messages, an intuitive and delightful app, lets you send/receive SMS/MMS messages, as well as send group texts, photos, or audio messages. You can add emojis or stickers to your messages, share your location, archive your messages, and easily block SMS senders. You can also take photos or record videos and easily share these files.

Sending messages

1. From the Home screen, tap .
2. Tap **Start chat**, then select the contact whom you want to send a message to.
3. Select the SIM account where you're going to send your message from.
4. Start composing your message in the message field.
5. When you're done, tap  SMS to send your message.

Replying to messages

1. Tap your message alert from your Home screen or Lock screen.
2. Select the SIM account where you're going to send your reply from.
3. Start composing your reply in the message field.
4. When you're done, tap  SMS to send your reply.

Fun and entertainment

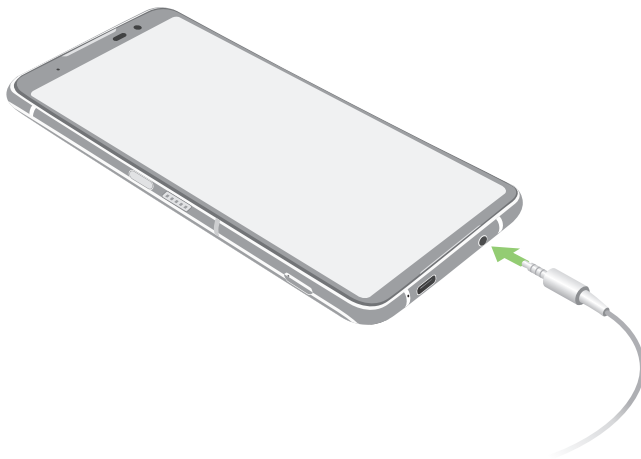
5

Using a headset

Have the freedom to do other things while you're in a call or enjoy listening to your favorite music, using a headset.

Connecting the audio jack

Insert the 3.5mm headset jack into the audio port of your device.



WARNING! Listening at a high volume for long periods can damage your hearing.

NOTES:

- We highly recommend to use only compatible headsets.
 - Unplugging the audio jack while listening to music, automatically pauses the music played.
 - Unplugging the audio jack while watching a video, automatically pauses the video playback.
-

YT Music

With YT Music, you can stream your favorite music, create playlists, or listen to the radio. You can also subscribe to YT Music for unlimited and ad-free access to millions of music files that you can add to your own music library.

Setting up your YT Music

Sign in to your Google or Gmail account to be able to use YT Music. Once you've signed in to your account, all music files on your ROG Phone, including the uploaded or purchased ones from YT Music, are added to your library.

To set up your YT Music:

1. From the Home screen, **Google > YT Music**.
2. Tap **SIGN IN > Add account**.
3. Follow the next instructions to sign in to your account.

NOTE: YT Music subscription is only available in some countries or regions.

Your precious moments


6

Capture moments

Launching the Camera app

Capture images and record videos using your ROG Phone's Camera app. Refer to any of the steps below to open the Camera app.

From the lock screen

Swipe  up to launch the camera app.

From the home screen

Tap .

Camera home screen

Your ROG Phone's camera is equipped with auto-scene detection and auto-image stabilizer features. It also features a video stabilization function that helps prevent shakiness while video recording.

Tap the icons to start using your camera and explore the image and video features of your ROG Phone.

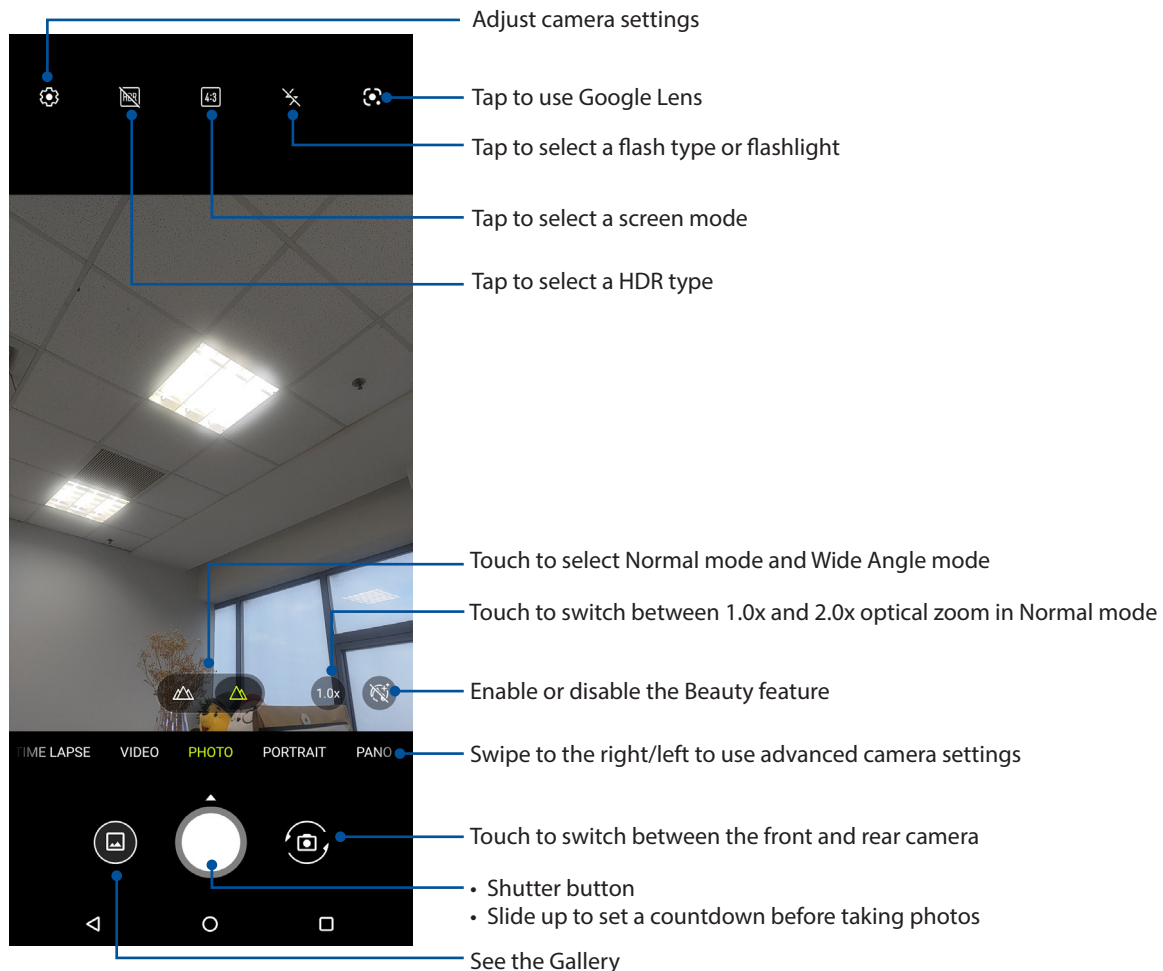



Photo Locations

To enable the location tagging feature, refer to the following steps:

1. Turn on the location access from **Settings > Location** and slide **Use location** to on.
2. Ensure that you have shared your location to Google Maps.
3. From the Camera app's home screen, tap  and activate **Location services** before you take the photo.

Advanced camera features



Explore new ways of capturing images or videos and make captured extra special moments using the advanced camera features of your ROG Phone.

IMPORTANT! Apply the settings first before taking images. Available features may vary per model.

Time lapse

The time lapse video feature of your ROG Phone allows you to capture stills for automatic time lapse playback. In effect, events seem to move in a fast-forward manner though they actually occurred and were recorded between long intervals.

Recording Time lapse videos

1. From the Camera app's home screen, swipe right to **Time lapse**.
2. Tap  on the upper left corner and tap **Timer** to select the timer lapse interval.
3. Tap  and then tap the shutter button to start taking Time lapse videos.

Slow motion

The slow motion video feature allows you to record videos for slow-motion playback.

Recording slow motion videos

1. From the Camera app's home screen, swipe right to **SLO-MO**.
2. Tap the shutter button to start taking Slow motion videos.

Night

Take well-lit photos even on night time or on low-light situations using the Night feature of your ROG Phone.

NOTE: Keep your hands steady while before and while the ROG Phone is capturing the image to prevent blurry results.


Capturing Night photos

1. From the Camera app's home screen, swipe left to **MORE > NIGHT**.
2. Tap the shutter button to start capturing Night photos.

Panorama

Capture images from various angles using Panorama. Images captured from a wide angle perspective are automatically stitched together using this feature.

Capturing panoramic photos

1. From the Camera app's home screen, swipe left to **PANO**.
2. Hold the phone steady and tap the shutter button to start auto panorama.
3. Tap  when finished.

Using the Gallery

View images and play videos on your ROG Phone using the Gallery app.

This app also allows you to edit, share, or delete image and video files stored in your ROG Phone. From Gallery, you can display images in a slideshow or tap to view the selected image or video file.

To launch Gallery, Swipe up on your Home screen and tap **Gallery**.

Viewing the photo location

Enable the location access on your ROG Phone, and get the location details on your photos. Your photos' location details include the area where the photos are taken, as well a map of the location via Google Map or Baidu (in China only).

To view the details of a photo:




1. Turn on the location access from **Settings > Location** and slide **Use location** to on.
2. Ensure that you have shared your location to Google Map or Baidu.
3. Launch the Gallery app, and select the photo whose photo details you want to view.
4. Tap the photo then tap **Details**.

Editing images

The Gallery also features its own image editing tools that you can use to enhance images saved on your ROG Phone.


1. Do either of the following:
 - From the Gallery > Photos screen, tap the image you want to edit.
 - From the Gallery > Albums screen, tap the folder where the files are located. After opening the folder, tap the image you want to edit.
2. Tap **Edit** to open the image editing toolbar.
3. Tap any of the icons on the editing toolbar to apply changes to the image.

Sharing files from the Gallery

1. Do either of the following:
 - From the Gallery > Photos screen, tap  > **Select** to activate file selection.
 - From the Gallery > Albums screen, tap the folder where the files you want to share are located. After opening the folder, tap  > **Select** to activate file selection.
2. Tap the files you want to share. A check mark appears on top of the image you select.
3. Tap  then select from the list where you want to share the images.

Deleting files from the Gallery

1. Do either of the following:

- From the Gallery > Photos screen, tap  > **Select** to activate file selection.
- From the Gallery > Albums screen, tap the folder where the files you want to delete are located. After opening the folder, tap  > **Select** to activate file selection.

2. Tap the files you want to delete. A check mark appears on top of the image you select.

3. Tap .


Staying connected

7

Mobile network

When there's no available Wi-Fi network that you can connect to, you can enable your mobile network's data access for Internet connection.

Enabling the mobile network

1. Do either of the following to launch the Settings screen:
 - Launch Quick Settings then tap .
 - Swipe up on your Home screen then tap **Settings**.
2. Tap **Network & internet** > **Mobile network**.
3. Slide **Mobile data** to on, and configure the other mobile network settings, if necessary.


NOTES:

- If you access the Internet via your mobile network, additional charges will be incurred depending on your data plan.
 - For more details on your mobile network charges/fees and settings, contact your mobile service provider.
-

Wi-Fi

The Wi-Fi technology of your ROG Phone gets you connected to the wireless world. Update your social media accounts, browse the Internet, or exchange data and messages wirelessly from your ROG Phone.

Enabling Wi-Fi

1. Launch the Settings screen by doing either of the following:
 - Launch Quick Settings then tap  > **Network & internet**.
 - Swipe up on your Home screen then tap **Settings** > **Network & internet**.
2. Slide the Wi-Fi switch to the right to turn on the Wi-Fi.

NOTE: You can also enable the Wi-Fi from Quick Settings screen. Refer to section [Quick Settings](#) on how to launch Quick Settings screen.

Connecting to a Wi-Fi network


1. On the Settings screen, tap **Network & internet** > **Wi-Fi** to display all detected Wi-Fi networks.
2. Tap a network name to connect to it. For a secured network, you may be prompted to key in a password or other security credentials.

NOTES:

- Your ROG Phone automatically reconnects to the network that you connected with previously.
 - Turn off the Wi-Fi feature when you're not using it to help save battery power.
-

Disabling Wi-Fi

To disable Wi-Fi:


1. Do either of the following:
 - Launch Quick Settings then tap  > **Network & internet**.
 - Swipe up on your Home screen then tap **Settings** > **Network & internet**.
2. Slide the Wi-Fi switch to the left to turn off the Wi-Fi.

NOTE: You can also disable the Wi-Fi from Quick Settings screen. See [Quick Settings](#) on how to launch Quick Settings screen.

Bluetooth®

Use the Bluetooth feature of your ROG Phone to send or receive files and stream multimedia files with other smart devices over short distances. With Bluetooth, you can share your media files with your friends' smart devices, send data for print with a Bluetooth printer, or play music files with a Bluetooth speaker.

Enabling Bluetooth®

1. Do either of the following:
 - Launch Quick Settings then tap  > **Connected devices**.
 - Swipe up on your Home screen then tap **Settings** > **Connected devices**.
2. Tap **Pair new device** or **Connection preferences**.
3. Slide the Bluetooth switch to the right to turn on the Bluetooth.

NOTE: You can also enable the Bluetooth from Quick Settings screen. See [Quick Settings](#) on how to launch Quick Settings screen.


Pairing your ROG Phone to a Bluetooth® device

Before using the Bluetooth feature of your ROG Phone in full scale, you have to pair it first with the Bluetooth device. The ROG Phone automatically stores the pairing connection of the Bluetooth device.

1. On the Settings screen, tap **Connected devices > Connection preferences > Bluetooth** to display all available devices.


IMPORTANT!

- If the device that you want to pair is not in the list, ensure to enable its Bluetooth feature make it discoverable.
 - See the user guide that came with your device to learn how to enable its Bluetooth and set it to discoverable.
-

2. Tap  > **Refresh** to scan for more Bluetooth devices.
3. In the list of available devices, tap the Bluetooth device that you want to pair with.
4. Ensure that the same passkey show on both devices, then tap **Pair**.

NOTE: Turn off the Bluetooth feature when you're not using it to help save battery power.

Unpairing your ROG Phone from the Bluetooth® device

1. On the Settings screen, tap tap **Connected devices > Connection preferences > Bluetooth** to display all available and paired devices.
2. In the list of paired devices, tap  of Bluetooth device that you want to unpair, then tap **FORGET**.

Tethering

When Wi-Fi service is not available, you can use your ROG Phone as a modem or turn it into a Wi-Fi hotspot to get Internet access on your laptop, tablet, and other mobile devices.

IMPORTANT! Most mobile service providers may require a data plan for you to be able to use the tethering function. Contact your mobile service provider about availing of this data plan.


NOTES:

- Internet access via tethering may be slower than the standard Wi-Fi or mobile connection.
 - Only a limited number of mobile devices can tether to your ROG Phone for Internet access.
 - Turn off the tethering feature when you're not using it to help save battery power.
-

Wi-Fi Hotspot

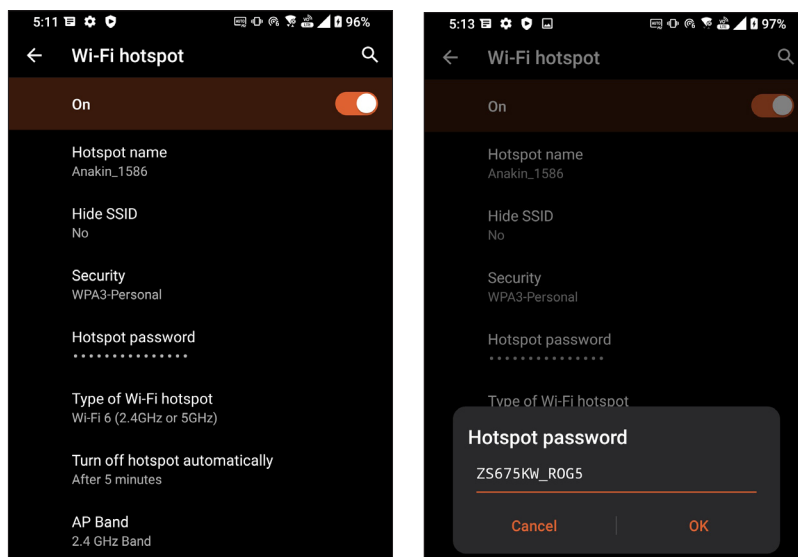
Turn your ROG Phone into a Wi-Fi Hotspot to share Internet connection with other devices.

1. Do either of the following:

- Launch Quick Settings then tap  > **Network & internet**.
- Swipe up on your Home screen then tap **Settings** > **Network & internet**.

2. Tap **Hotspot & tethering** then slide on **Wi-Fi hotspot**.

3. Tap **Wi-Fi hotspot** > **Hotspot name** to assign a unique SSID or network name, and tap **Hotspot password** to assign a strong 8-character password for your Wi-Fi hotspot. When done, tap **OK**.

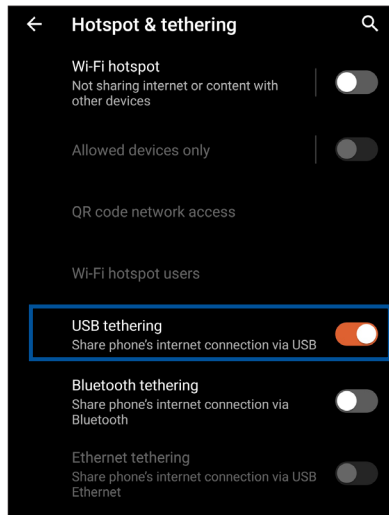


4. Connect other devices to your ROG Phone's hotspot connection the same way you connect to a Wi-Fi network.

USB Tethering

Enable USB tethering on your ROG Phone and share its Internet connection with other devices.

1. Connect your ROG Phone to another device with a USB cable.
2. From the Settings screen, tap **Network & internet** > **Hotspot & tethering**, then slide on **USB tethering** to enable tethering.



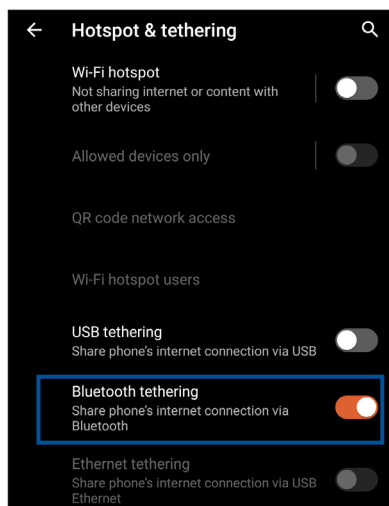
Bluetooth Tethering

Enable Bluetooth tethering on your ROG Phone to share its Internet connection with other devices.

1. Enable Bluetooth on your ROG Phone and the other device.
2. Pair both devices.

NOTE: For details, see [Pairing your ROG Phone to a Bluetooth® device](#).

3. From the Settings screen, tap **Network & internet** > **Hotspot & tethering**, then slide on **Bluetooth tethering**.



Travel and Maps

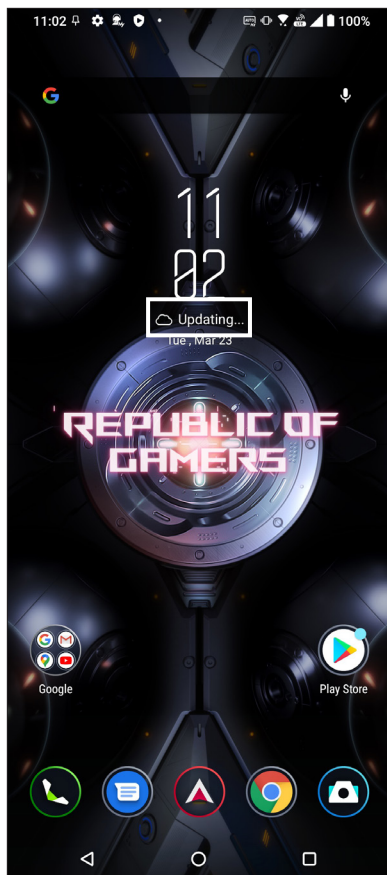
8

Weather

Get real-time weather updates straight from your ROG Phone using the weather app. Using Weather, you can also check other weather details from around the world.

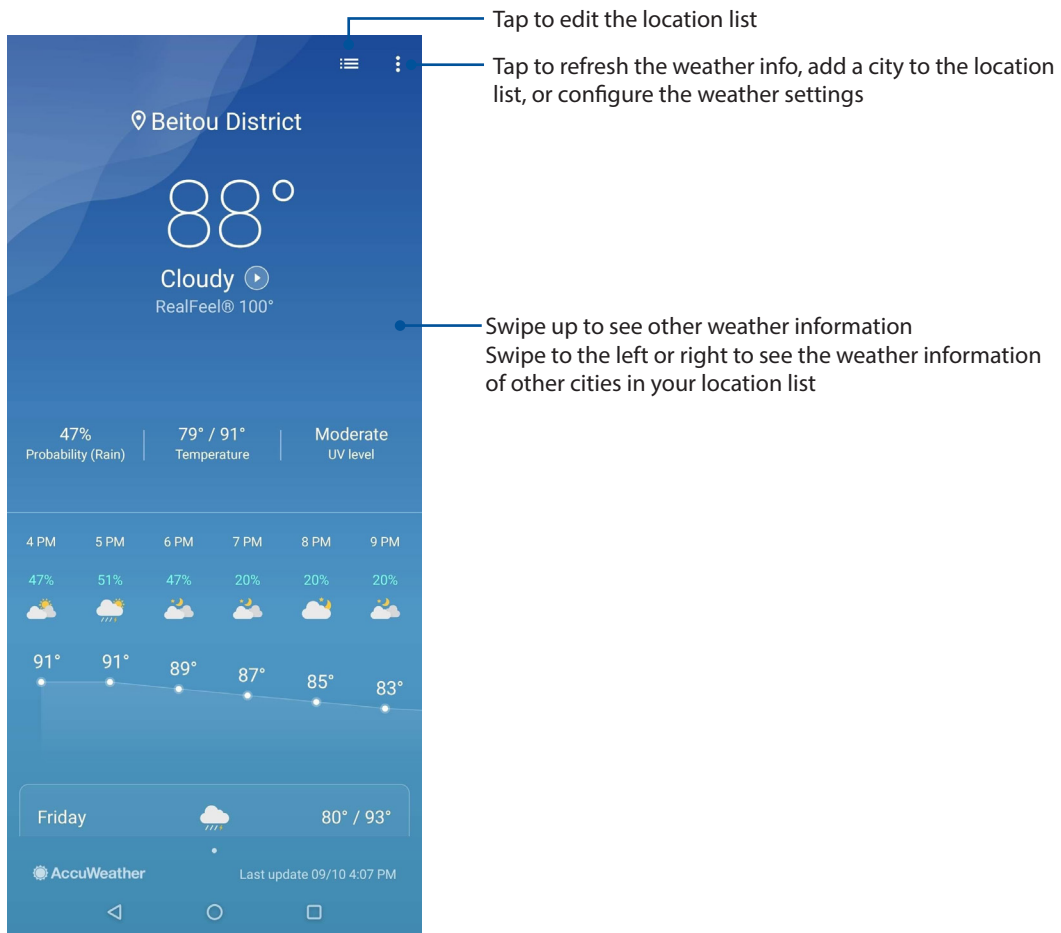
Launching the Weather app

From your Home screen, tap the weather icon to launch the Weather app.



Weather home screen

Set up and get your current location's weather updates as well as other parts of the world.



Clock

Customize the time zone settings of your ROG Phone, set alarms, and use your ROG Phone as a stop watch using the Clock app.

Launching Clock

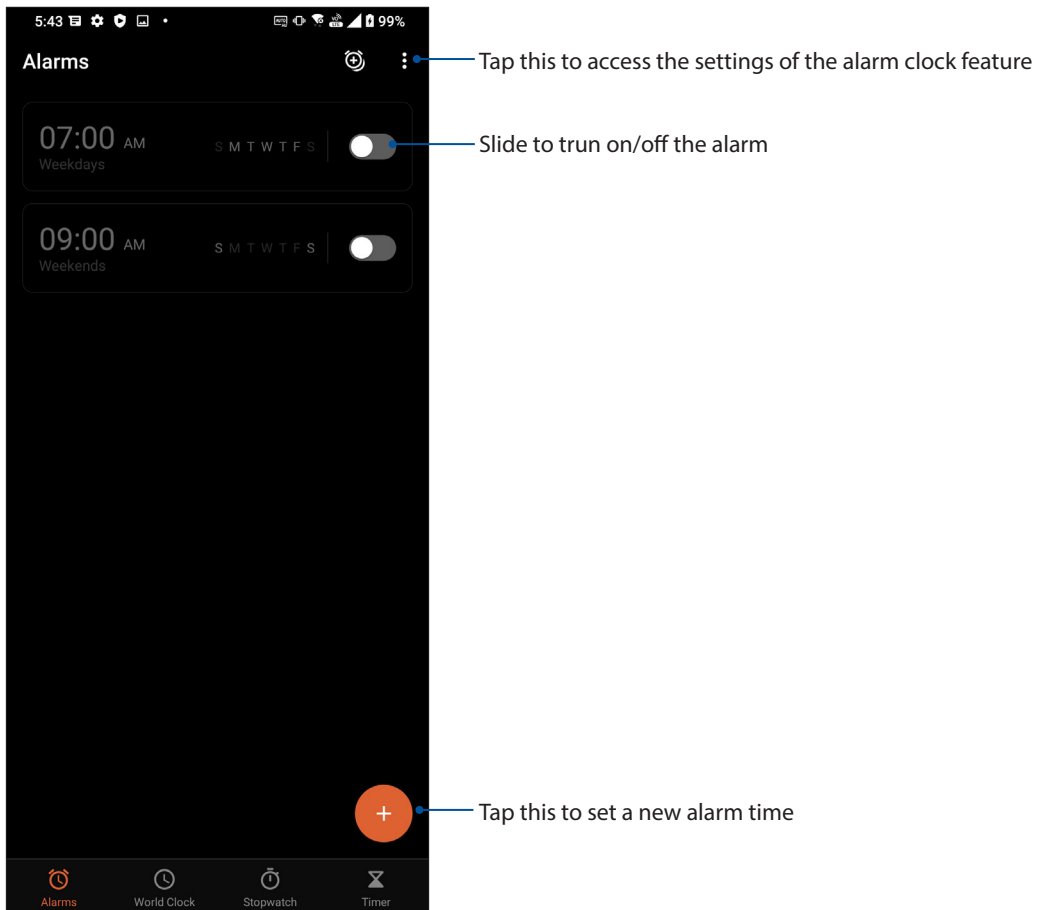
Launch the Clock app using either of the following options:

- Swipe up on your Home screen then tap **Clock**.
- From your ROG Phone's home screen, tap the digital clock display.



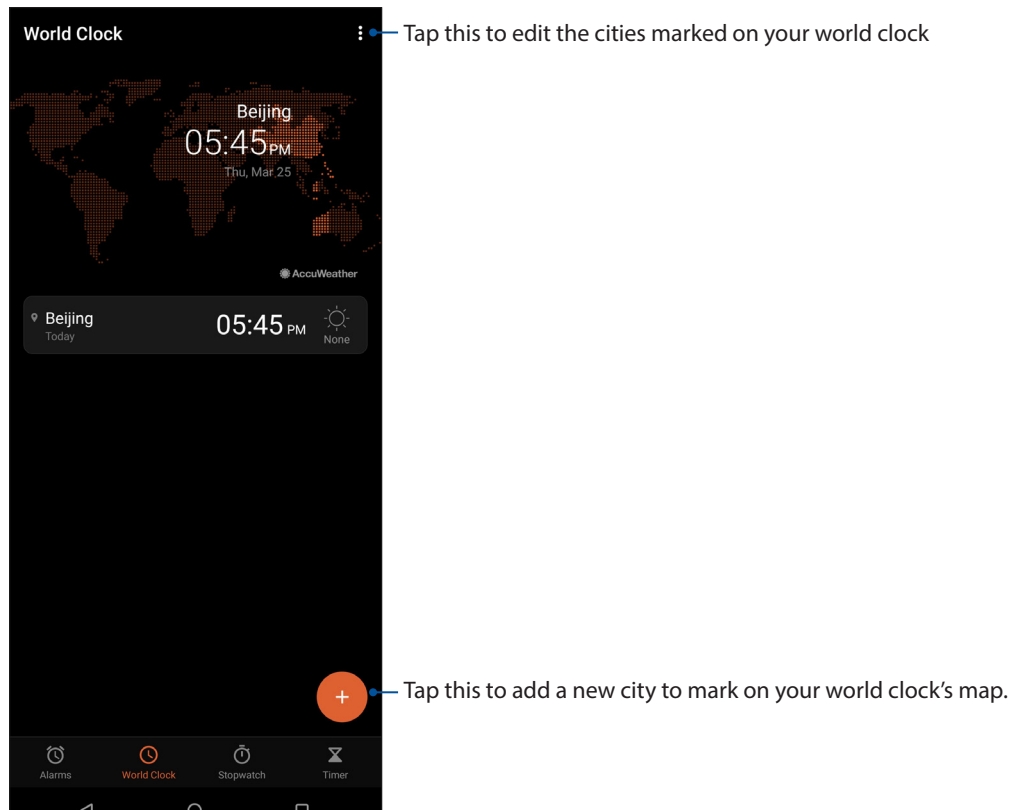
Alarm clock

Tap **Alarms** to access the alarm clock settings of your ROG Phone.



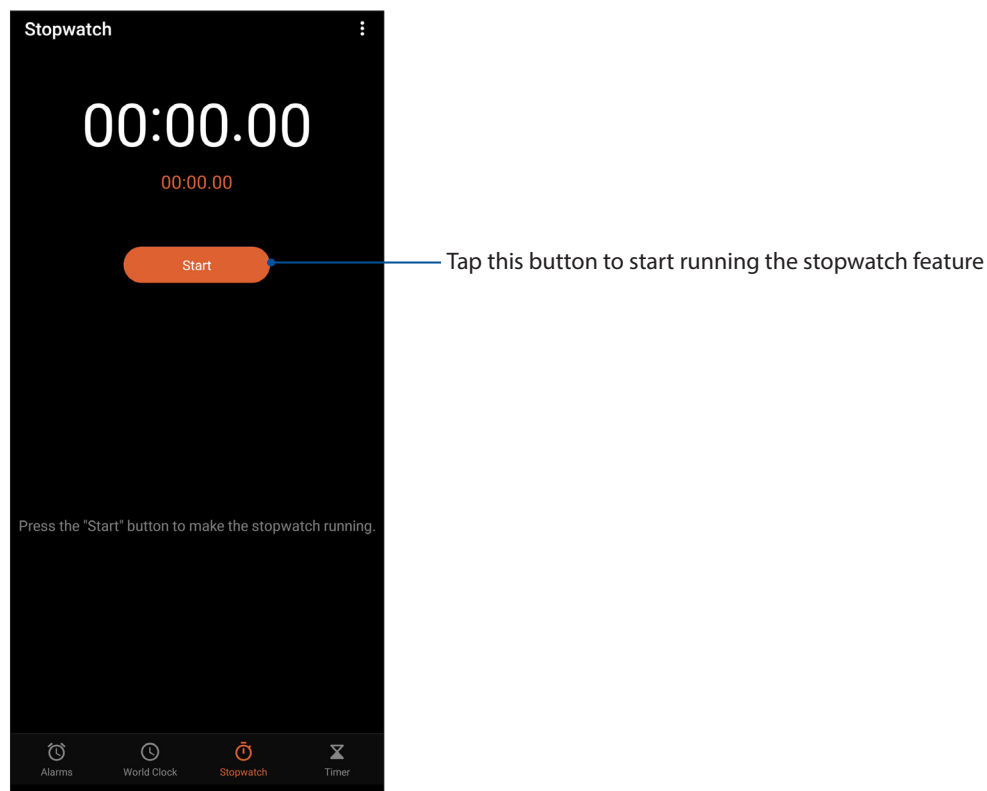
World clock

Tap **World Clock** to access the world clock settings of your ROG Phone.



Stopwatch

Tap **Stopwatch** to use your ROG Phone as a stopwatch.

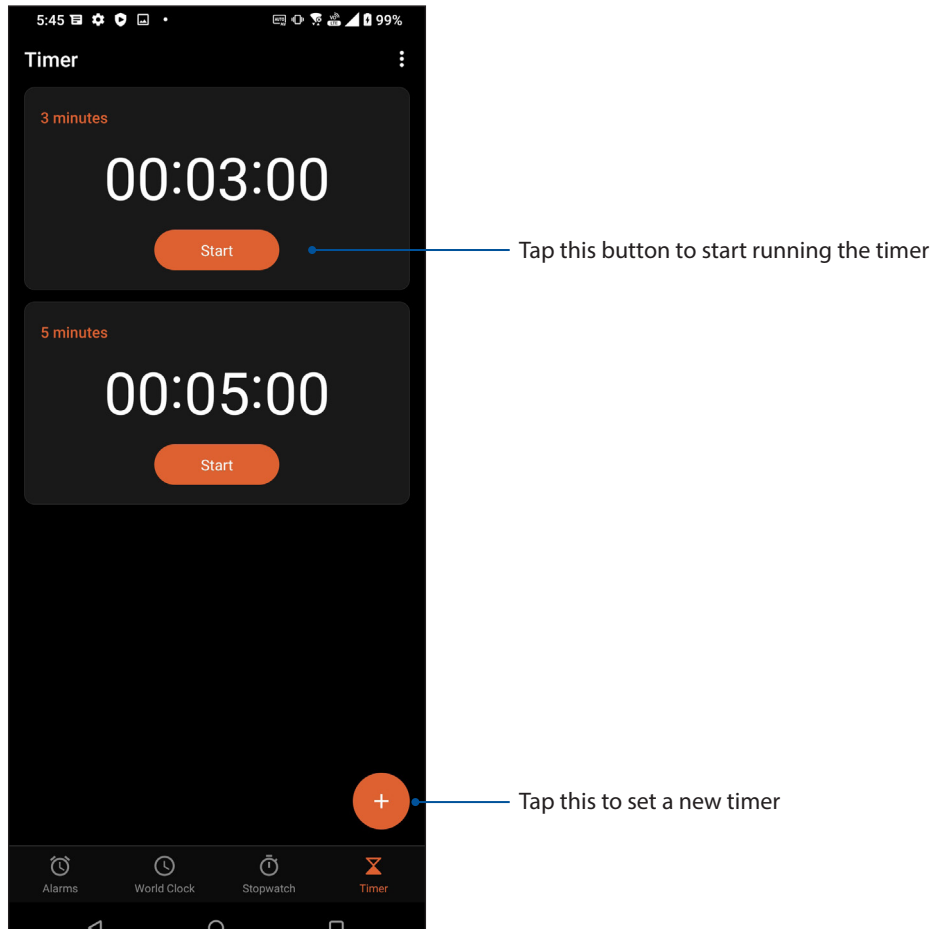


Timer

You may set multiple timer options for your ROG Phone. To do this, follow the steps below:

Setting the timer

Tap **Timer** to access the timer feature of your ROG Phone.



Special ROG Tools

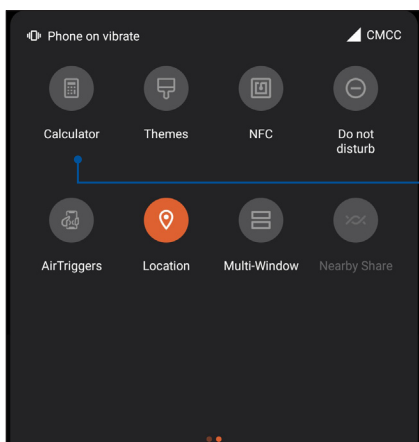
Calculator

Calculate using your ROG Phone by enabling the Calculator app.

Launching Calculator

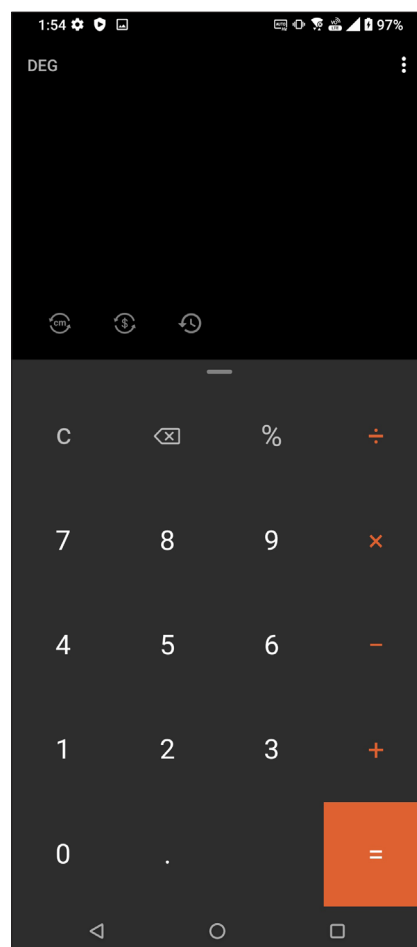
Launch Calculator using either of the following options:

- Swipe up on your Home screen then tap **Calculator**.
- Open the Quick settings panel, the Calculator icon is there visibly on the list. Tap it to get started with your computations.



Tap this to enable the calculator

Calculator screen

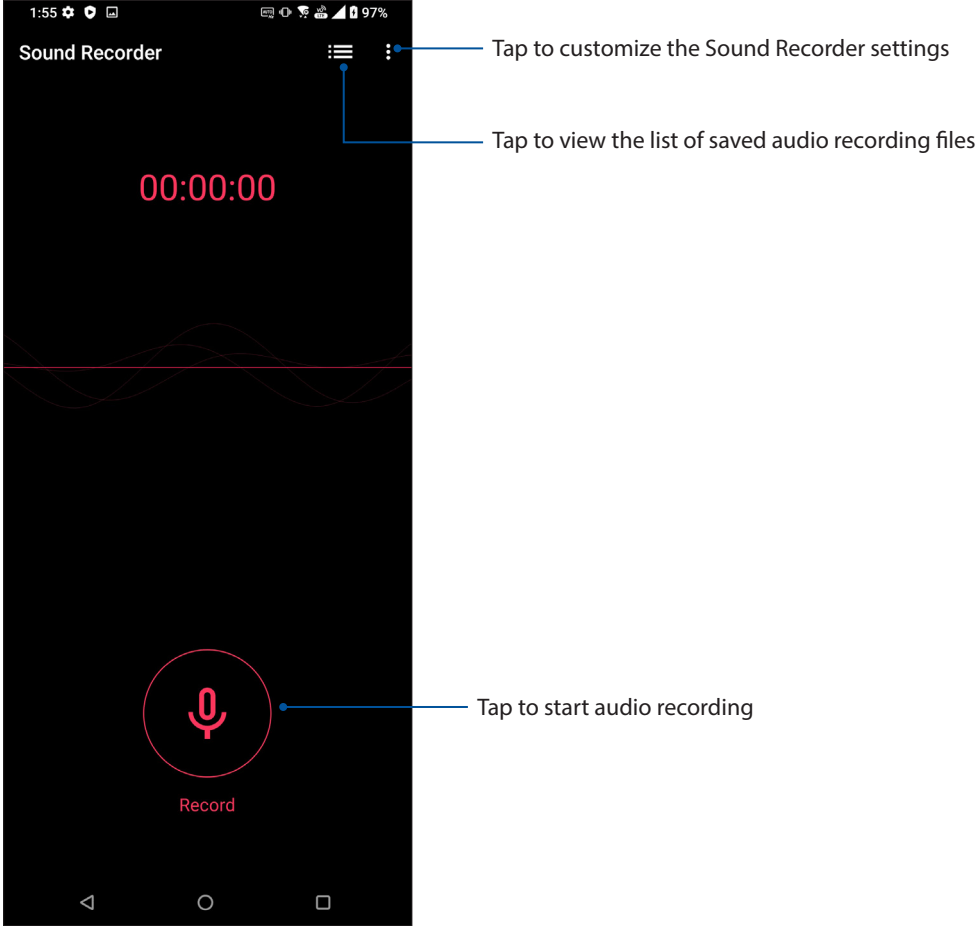


Sound Recorder

Record audio files using your ROG Phone by enabling the Sound Recorder app.

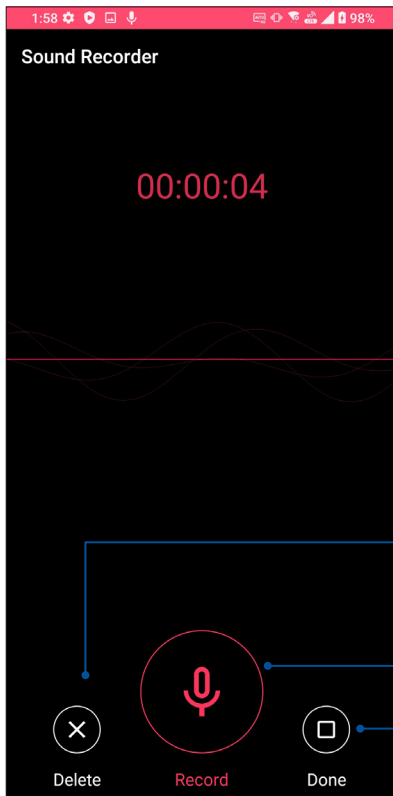
Launching Sound Recorder

To launch Sound Recorder, swipe up on your Home screen then tap **Sound Recorder**.



Pausing a recording

During a paused recording, you can choose to resume, delete, or save the recording.



Tap to delete the recording

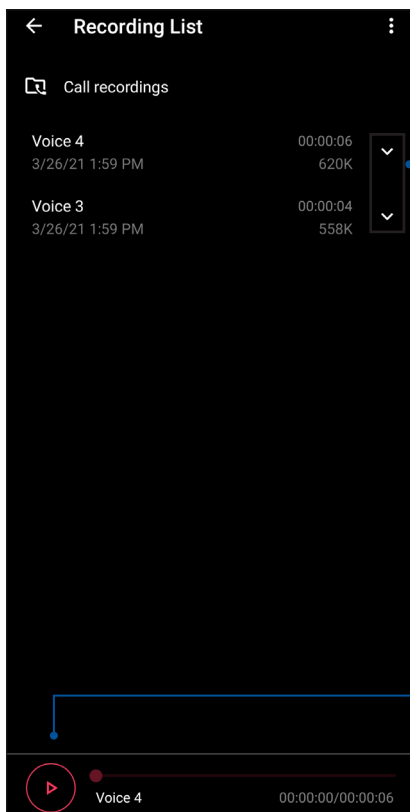
Tap to resume the recording

Tap to save the recording

Recording List

From the Recording List, you can play, rename, share, or delete a saved audio recording file.

To view your recording list, tap  from the Sound Recorder main screen.



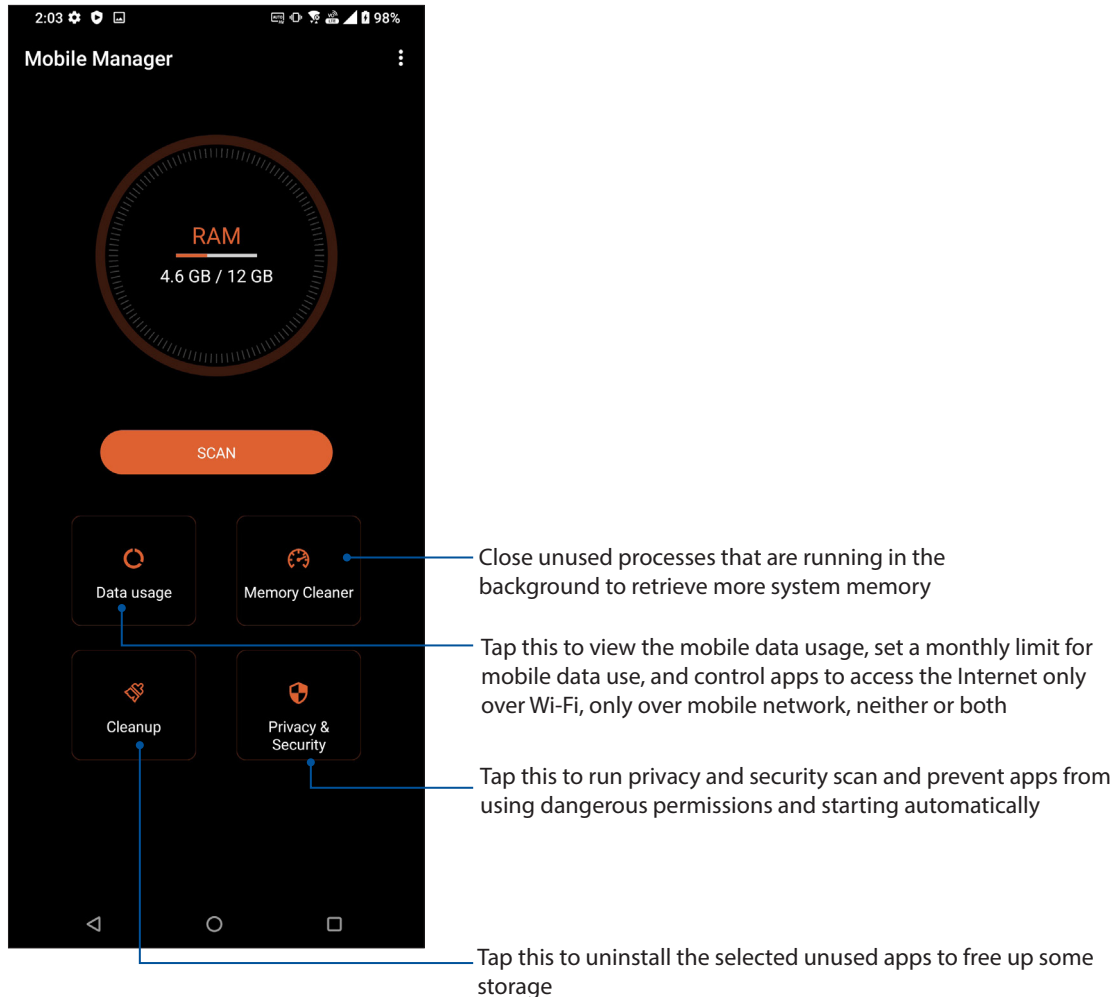
Tap to share, rename, or delete your selected recording

Tap to play/pause your selected recording

Mobile Manager

Mobile Manager provides an integrated interface for several apps that are designed to optimize device performance, manage the phone power, and storage usage.


To launch Mobile Manager, swipe up on your Home screen then tap **Settings > Advanced > Mobile Manager**.



Keeping your device up-to-date

Keep your ROG Phone in the loop of Android system updates and upgraded apps and features.

Updating your system

1. Swipe up on your Home screen then tap **Settings**.
2. On the Settings screen, slide down to display other items then tap **System > System update** to check for system updates.
3. Tap  on the System updates screen to set up automatic download of system updates.

NOTE: You can preview the last time your ROG Phone's system was updated at the Last update check of the System update window.

Storage

You can store data, apps, or files on your ROG Phone (internal storage), on an external storage, or on an online storage. You need an internet connection to transfer or download your files on an online storage. Use the bundled USB cable to copy files to or from the computer to your ROG Phone.

Backup

Back up data, Wi-Fi passwords, and other settings to Google servers using your ROG Phone.

1. Swipe up on your Home screen then tap **Settings > System > Backup**.
2. From the Backup window, you can:
 - **Back up to Google Drive:** This feature backs up your data, Wi-Fi passwords, and other settings to Google Drive when enabled.

Reset

Reset network settings and app preferences, or reset factory defaults.

1. Swipe up on your Home screen then tap **Settings > System > Reset options**.
2. From the Reset window, you can:

- **Reset Wi-Fi, mobile & Bluetooth:** This feature restores Wi-Fi passwords, and other network settings.
- **Erase all data (factory reset):** Erases all data on phone.

Securing your ROG Phone

Use the security features of your ROG Phone to prevent unauthorized calls or access of information.

Unlocking your screen

When the screen is locked, you can open it with the security unlocking options that the ROG Phone offers you.

1. Swipe up on your Home screen then tap **Settings > Security & lock screen**.
2. Tap **Screen lock** then select an option to unlock your ROG Phone.

NOTES:

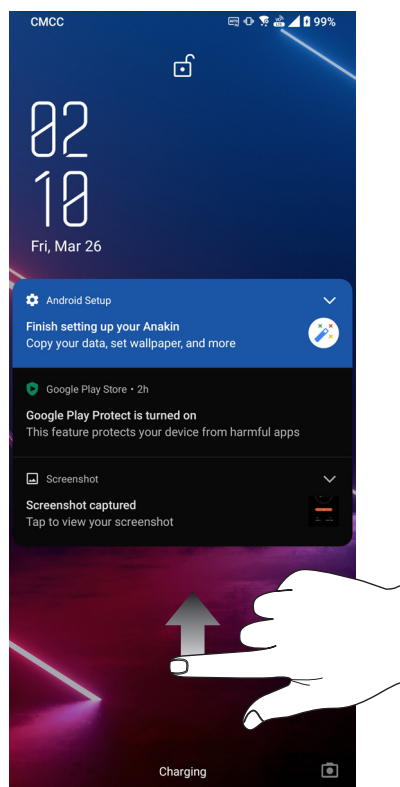
- Refer to section **Unlock screen options** for more information.
 - To deactivate the unlock screen option that you set, tap **None** on Choose screen lock screen.
-

Unlock screen options

Choose from these options to lock your ROG Phone.

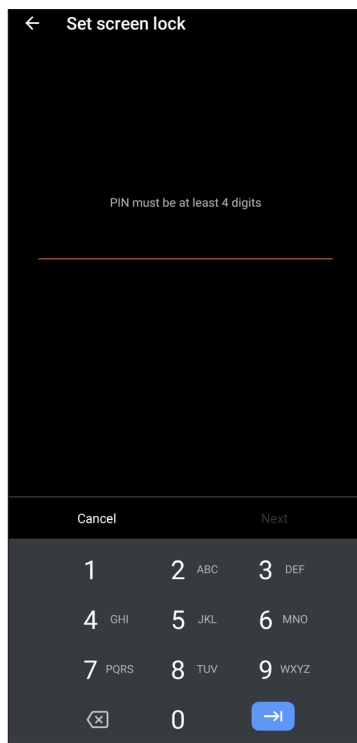
Swipe

Swipe up to unlock your ROG Phone.



PIN

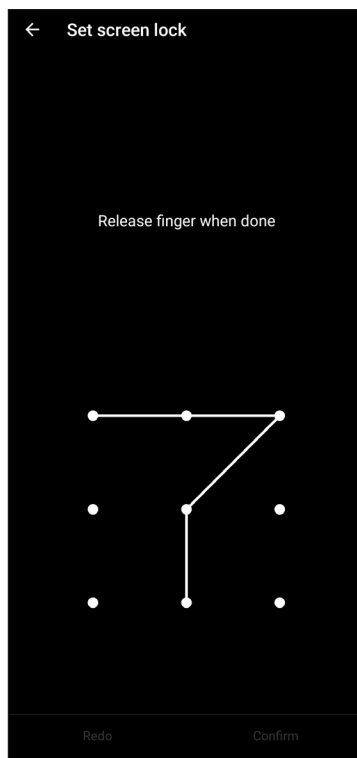
Key in at least four numbers to set a PIN.



IMPORTANT! Ensure to remember the PIN that you created to unlock your device.

Pattern

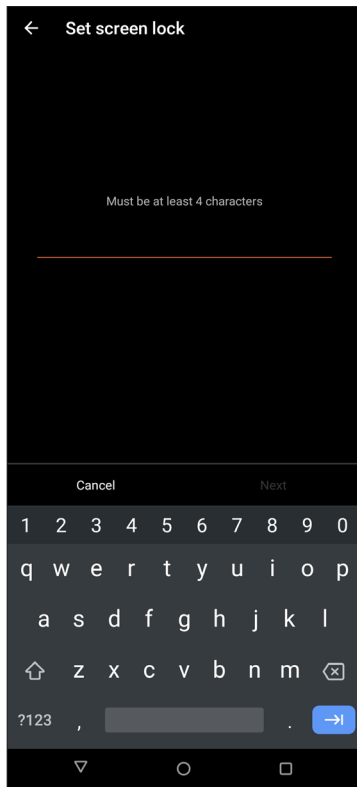
Slide your finger on the dots and create a pattern.



IMPORTANT! You can create a pattern with a minimum of four dots. Ensure to remember the pattern that you created to unlock your device.

Password

Key in at least four characters to create a password.



IMPORTANT! Ensure to remember the password that you created to unlock your device.

Setting your ROG Phone identity

Know your ROG Phone's identity such as serial number, IMEI (International Mobile Equipment Identity) number, or model number.

This is important, as when you may lose your ROG Phone, you can contact your mobile carrier and provide the information to blacklist the unauthorized use of your ROG Phone.

To display your ROG Phone's identity:

1. Swipe up on your Home screen then tap **Settings**.
2. On the Settings screen, slide down to display other items then tap **System > About phone**. The About phone screen displays the device name, status, emergency information, legal information, operating system version, hardware, and software information of your ROG Phone.
3. To see the serial number, SIM status, and IMEI of your ROG Phone, tap **Status**.

Appendix

Safety information

CAUTION! Use of controls or adjustments or performance of procedures other than those specified herein may result in hazardous radiation exposure.

ROG Phone care

- Use your ROG Phone in an environment with ambient temperatures between 0 °C (32 °F) and 35 °C (95 °F).

The battery

WARNING: Disassembling the battery by yourself will void its warranty and may cause serious harm.

Your ROG Phone is equipped with a high performance non-detachable Li-polymer battery. Observe the maintenance guidelines for a longer battery life.

- Do not remove the non-detachable Li-polymer battery as this will void the warranty.
- Avoid charging or storing the battery in extremely high or low temperature. The battery performance may be impacted in a temperature higher than 50 °C (122 °F) or lower than -10 °C (14 °F). It performs optimally in an ambient temperature of +5 °C to +35 °C.
- Do not remove and replace the battery with a non-approved battery.
- Use only ASUS battery. Using a different battery may cause physical harm/injury and may damage your device.
- Do not remove and soak the battery in water or any other liquid.
- Never try to open the battery as it contains substances that might be harmful if swallowed or allowed to come into contact with unprotected skin.
- Do not remove and short-circuit the battery, as it may overheat and cause a fire. Keep it away from jewelry or metal objects.
- Do not remove and dispose of the battery in fire. It could explode and release harmful substances into the environment.
- Do not remove and dispose of the battery with your regular household waste. Take it to a hazardous material collection point.
- Do not touch the battery terminals.

- To avoid fire or burns, do not disassemble, bend, crush, or puncture the battery.

NOTES:

- Risk of explosion if battery is replaced by an incorrect type.
 - Dispose of used battery according to the instructions.
-

- It is normal for battery capacity to drop gradually due to usage and aging. If there is an obvious decrease in standby or calling time, return your ROG Phone to an authorized service center.

The charger

- Use only the charger supplied with your ROG Phone.
- Never pull the charger cord to disconnect it from the power socket. Pull the charger itself.

Caution

Your ROG Phone is a high quality piece of equipment. Before operating, read all instructions and cautionary markings on the (1) AC Adapter.

- Do not use the ROG Phone in an extreme environment where high temperature or high humidity exists. The ROG Phone performs optimally in an ambient temperature between 0 °C (32 °F) and 35 °C (95 °F).
- Do not disassemble the ROG Phone or its accessories. If service or repair is required, return the unit to an authorized service center. If the unit is disassembled, a risk of electric shock or fire may result.
- Do not short-circuit the battery terminals with metal items.

Operator access with a tool

If a TOOL is necessary to gain access to an OPERATOR ACCESS AREA, either all other compartments within that area containing a hazard shall be inaccessible to the OPERATOR by the use of the same TOOL, or such compartments shall be marked to discourage OPERATOR access.

EU Radio Equipment Directive Compliance

Simplified EU Declaration of Conformity

Hereby, ASUSTek Computer Inc. declares that the radio equipment ASUS_I005D / ASUS_I005DC is in compliance with Directive 2014/53/EU. Full text of EU declaration of conformity is available at <https://www.asus.com/support/>. (Search for ZS676KS)

RF Output Table

Items	Maximum Radio-Frequency Output Power Table	
Bluetooth	Bluetooth BR/EDR (2402~2480 MHz)	17 (dBm)
	Bluetooth -LE (2402~2480 MHz)	8 (dBm)
WLAN 2.4GHz	2.4GHz 802.11b (2412~2472 MHz)	19 (dBm)
	2.4GHz 802.11g (2412~2472 MHz)	20.5 (dBm)
	2.4GHz 802.11n HT20 (2412~2472 MHz)	20.5 (dBm)
	2.4GHz 802.11ax HE20 (2412~2472 MHz)	20.5 (dBm)
	2.4GHz 802.11n HT40 (2422~2462 MHz)	20 (dBm)
	2.4GHz 802.11ax HE40 (2422~2462 MHz)	20.5 (dBm)
WLAN 5GHz	5GHz 802.11a (5180~5320; 5500~5700 MHz)	19 (dBm)
	5GHz 802.11n HT20 (5180~5320; 5500~5700 MHz)	18.5 (dBm)
	5GHz 802.11 n HT40 (5190~5310; 5510~5670 MHz)	20 (dBm)
	5GHz 802.11ac-VHT20 (5180~5320; 5500~5700 MHz)	18.5 (dBm)
	5GHz 802.11ac-VHT40 (5190~5310; 5510~5670 MHz)	20 (dBm)
	5GHz 802.11ac VHT80 (5210~5290; 5530~5610 MHz)	20 (dBm)
	5GHz 802.11ax-HE20 (5180~5320; 5500~5700 MHz)	19.5 (dBm)
	5GHz 802.11ax-HE40 (5190~5310; 5510~5670 MHz)	20 (dBm)
	5GHz 802.11ax-HE80 (5210~5290; 5530~5610 MHz)	20 (dBm)
	5GHz 802.11ax-HE160 (5250; 5570 MHz)	17 (dBm)
	6GHz (5945~6425 MHz)	19.5(dBm)
NFC	13.553-13.567 MHz	-16.84 (dBuA/m@ 10m)
GSM	GSM 900 Burst (880~915; 925~960 MHz)	33.5 (dBm)
	GSM 1800 Burst (1710~1785; 1805~1880 MHz)	31.5 (dBm)
WCDMA	WCDMA Band I (1920~1980; 2110~2170 MHz)	25.5 (dBm)
	WCDMA Band III (1747.4~1782.4; 1805~1880 MHz)	25.5 (dBm)
	WCDMA Band V (824~849; 869~894 MHz)	25.5 (dBm)
	WCDMA Band VIII (880~915; 925~960 MHz)	25.5 (dBm)
LTE	LTE Band 1 (1920~1980; 2110~2170 MHz)	25.5 (dBm)
	LTE Band 3 (1710~1785; 1805~1880 MHz)	25.5 (dBm)
	LTE Band 5 (824~849; 869~894 MHz)	25.5 (dBm)
	LTE Band 7 (2500~2570; 2620~2690 MHz)	25.5 (dBm)
	LTE Band 8 (880~915; 925~960 MHz)	25.5 (dBm)
	LTE Band 20 (832~ 862; 791~821 MHz)	25.5 (dBm)
	LTE Band 28 (703~748; 758~803 MHz)	25.5 (dBm)
	LTE Band 34 (2010~2025 MHz)	25.5 (dBm)
	LTE Band 38 (2570~2620 MHz)	25.5 (dBm)
	LTE Band 40 (2300~2400 MHz)	24.5 (dBm)
	LTE Band 41 (2496~2690 MHz)	25.5 (dBm)
	LTE Band 42 (3400~3600 MHz)	25.5 (dBm)

Items	Maximum Radio-Frequency Output Power Table	
5G	NR n1 (1920~1980; 2110~2170 MHz)	24.5 (dBm)
	NR n3 (1710~1785; 1805~1880 MHz)	24.5 (dBm)
	NR n5 (824~849; 869~894 MHz)	24.5 (dBm)
	NR n7 (2500~2570; 2620~2690 MHz)	24.5 (dBm)
	NR n8 (880~915; 925~960 MHz)	24.5 (dBm)
	NR n20 (832~862; 791~821 MHz)	24.5 (dBm)
	NR n28 (703~748; 758~803 MHz)	24.5 (dBm)
	NR n38 (2570~2620 MHz)	24.5 (dBm)
	NR n40 (2300~2400 MHz)	24.5 (dBm)
	NR n41 (2496~2690 MHz)	24 (dBm)
	NR n77 (3300~4200 MHz)	24 (dBm)
	NR n78 (3300~3800 MHz)	24 (dBm)
	NR n79 (4400~5000 MHz)	24.5 (dBm)

* ROG Phone 5G NR Sub-6/4G LTE band compatibility varies by region, please check compatibility with your local carriers.

NOTE: This RF output power table is for EU member states, the EEA States, the EFTA States and Turkey only. The frequency range and the RF output power may differ from other non-EU countries.

The Wi-Fi operating in the bands 5150-5350 MHz, 5945-6425 MHz shall be restricted to indoor use for countries listed in the table below:

AT	BE	BG	CZ	DK	EE	FR
DE	IS	IE	IT	EL	ES	CY
LV	LI	LT	LU	HU	MT	NL
NO	PL	PT	RO	SI	SK	TR
FI	SE	CH	HR	UK(NI)		

RF Exposure Information

This ASUS product has been tested and meets applicable European SAR limits. The SAR limit is 2.0 W/kg in countries that set the limit averaged over 10 grams of tissue. The specific maximum SAR values for this device are as follows:

- Head: 1.331 W/Kg @10g
- Body: 1.561 W/Kg @10g

When carrying this device or using it while worn on the body, either use an approved accessory such as a holster or otherwise maintain a distance of 5 mm from the body to ensure compliance with RF exposure requirements.

CE Marking



Low Blue Light Certification

ROG Phone reduces the blue light emitted by its screen, providing you with a more comfortable viewing experience.

By default, the screen's brightness is set to Maximum and the phone is in compliance with SGS Eye Care and SGS Seamless Pro certifications.

Eye Care Display
Harmful Blue Light less than **6.5%**
SAMSUNG OLED

Seamless Pro
Motion Speed 120Hz
Blur Length ≤ 0.7mm / MPRT ≤ 11ms
SAMSUNG OLED

Alleviation of Eye Strain

To alleviate eye strain:

- Take frequent breaks when using your ROG Phone (at least one 10-minute break every half an hour).
- Regularly focus on distant objects to relax your eyes.
- Do eye exercises often including:
 - (1) Look up and down without moving your head
 - (2) Move your eyes from left to right without moving your head
 - (3) Slowly roll your eyes
 - (4) Move your eyes diagonally

WARNING: Keep your ROG Phone's screen away from infants and toddlers younger than 2 years. Children 2 years old and above should get no more than an hour of screen time each day.

Using GPS (Global Positioning System) on your ROG Phone

To use the GPS positioning feature on your ROG Phone:

Ensure that your device is connected to the Internet before using Google Map or any GPS-enabled apps.

For first-time use of a GPS-enabled app on your device, ensure that you are outdoors to get the best positioning data.

When using a GPS-enabled app on your device inside a vehicle, the metallic component of the car window and other electronic devices might affect the GPS performance.

Prevention of Hearing Loss

To prevent possible hearing damage, do not listen at high volume levels for long periods.



For France, headphones/earphones for this device are compliant with the sound pressure level requirement laid down in the applicable EN 50332-1:2013 and/or EN50332-2:2013 standard required by French Article L.5232-1.

General Usage (typical body-worn) (for Japan)

This device (front & rear side) should be operated under a separation distance of 15 mm from the human body.

* The other four sides are not in close proximity to the human body at the general use as described above.

5GHz band (W52,W53): Indoor use only (Except for the 5.2GHz transmission with High Power Data Communication System Base Station or Relay Station).

5.2/5.3GHz 屋内使用限定 (高出力システムと通信する場合を除く).

電波障害自主規制について

この装置は、情報処理装置等電波障害自主規制協議会 (VCCI)の基準に基づくクラス B 情報技術装置です。この装置は、家庭環境で使用することを目的としていますが、この装置がラジオやテレビジョン受信機に近接して使用されると、受信障害を引き起こすことがあります。取り扱い説明書に従って正しい取り扱いをしてください。

この装置は、クラスB情報技術装置です。この装置は、家庭環境で使用することを目的としていますが、この装置がラジオやテレビジョン受信機に近接して使用されると、受信障害を引き起こすことがあります。

取扱説明書に従って正しい取り扱いをして下さい。VCCI-B

Coating notice

IMPORTANT! To provide electrical insulation and maintain electrical safety, a coating is applied to insulate the device except on the areas where the I/O ports are located.

Green ASUS notice

ASUS is devoted to creating environment-friendly products and packaging to safeguard consumers' health while minimizing the impact on the environment. The reduction of the number of the manual pages complies with the reduction of carbon emission.

For the detailed user manual and related information, refer to the user manual included in the ROG Phone or visit the ASUS Support Site at <https://www.asus.com/support>.

ASUS Recycling/Takeback Services

ASUS recycling and takeback programs come from our commitment to the highest standards for protecting our environment. We believe in providing solutions for you to be able to responsibly recycle our products, batteries, other components as well as the packaging materials. Please go to <http://csr.asus.com/english/Takeback.htm> for detailed recycling information in different regions.

ASUSTEK (UK) LIMITED.

1st Floor, Sackville House, 143-149 Fenchurch Street, London, EC3M 6BL

England

United Kingdom

Model name: ASUS_I005D / ASUS_I005DC (ZS676KS)

Manufacturer:	ASUSTeK Computer Inc.
Address:	1F, No.15, Lide RD., Beitou Dist., Taipei City 112, Taiwan
Authorised representative in Europe:	ASUS Computer GmbH
Address:	HARKORT STR. 21-23, 40880 RATINGEN, GERMANY

Index

A

Advanced camera features 56
AeroActive Cooler 9

B

Backup and reset 73
Beauty
- see also Advanced camera features 56
Block list 50
- blocking 50
- unblocking 50
Bluetooth 60
- enabling 60
- pairing 61
- unpairing 61

C

Calculator 69
Call logs 44
- redial your last-called number 45
- saving calls to Contacts 44
Calls 42
- answering 44
- calling from Contacts 43
- calling your favorite contacts 44
- dialing a phone number 42
- launching the Phone app 42
- other call options 45
- receiving 44
- see Call logs 44
- see Extension number 42
- see Smart Dialing 43
Camera 54
- camera home screen 55
- launching 54
- see Advanced camera features 56
Chrome 33
- bookmarking pages 34
- clearing the browser data 34
- launching 33
- sharing pages 34
Clock 66
- alarm clock 66
- launching 66
- stopwatch 67
- timer 68
- world clock 67
Contacts 47

- adding 48
- adding an extension number 48
- contacts settings 47
- customizing your contact's profile 49
- see also Social networking 50
- setting up your profile 47

D

Data Transfer 39
Date and time 26
- setting up 26
Dual SIM feature 40
- assigning 41
- renaming 40
- SIM card for data service 41
- SIM card for voice calls 41

E

Extension number 42
- auto dialing 43
- confirmation prompt 42
- dialing 42

F

Face Unlock 30
Favorite contacts 44
- calling 44
- marking 49
File Manager 38
- accessing the internal storage 38
Fingerprint 28
- setting up fingerprint ID from Settings 29
- starting for the first time 28

G

Gallery 57
- deleting files 58
- editing images 57
- sharing files 57
- viewing the photo location 57
Gmail 35
Google Calendar 36
- creating events 36
- creating reminders 37
- editing or removing events 36
- editing or removing reminders 37

H

Headset 52
- connecting 52
Home screen 20
- see also Wallpapers 24

L

- Lock screen 27
 - customizing 27
 - see also Securing your ASUS phone 74

M

- Managing your call logs 44
 - redialing your last-called number 45
 - saving to Contacts 44
- Messages 51
 - replying to messages 51
 - sending messages 51
- Mobile Manager 72
- Mobile network 59
 - enabling 59
- My Themes
 - see also Personalizing your Home screen 25

N

- Nano SIM cards 40
 - assigning a preferred nano SIM card 41
 - renaming 40
 - SMS messages 41
- Night 56

P

- Panorama
 - see also Advanced camera features 56
- Personalizing your Home screen 23

Q

- Quick settings 21
 - adding features 21
 - removing features 21

R

- Ringtone 26
 - setting up 26
 - sound 26
- ROG Phone 8
 - Charging 13
 - nano SIM card 11
 - Parts and features 8
 - Turning on or off 15

S

- Security 74
- Smart Dialing 43
- Social networking 50
- Sound Recorder 70
 - launching Sound Recorder 70

- pausing a recording 71
- recording List 71

- Storage 73
- System 73
 - updating 73
- System notifications 22

T

- Tethering 62
 - Wi-Fi Hotspot 62
- Time lapse
 - see also Advanced camera features 56
- Touchscreen 17
 - launching apps 17
 - moving or deleting items 17
 - moving through pages or screens 18
 - zooming in 18
 - zooming out 19

W

- Wallpapers 24
- Weather 64
 - launching 64
 - weather home screen 65
- Wi-Fi 59
 - connecting 60
 - disabling 60
 - enabling 59

Y

- YT Music 53
 - Setting up your YT Music 53

Z

- ZenUI 7