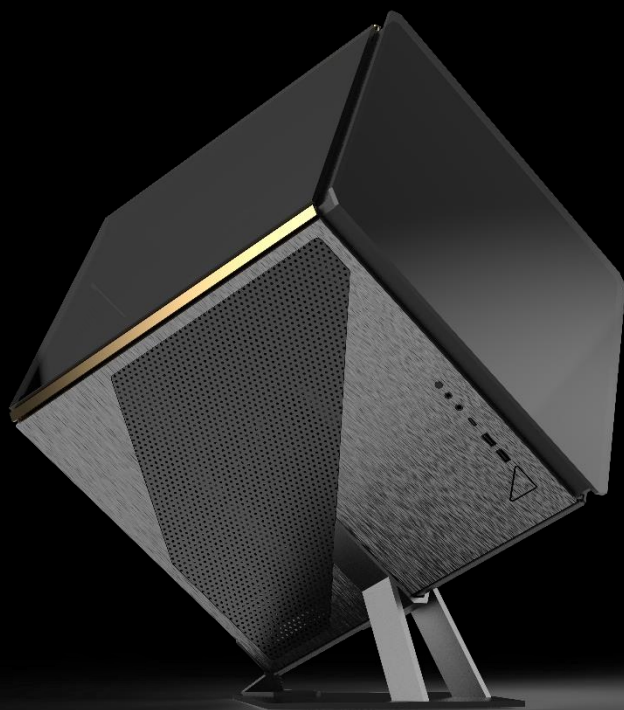




R E G I S



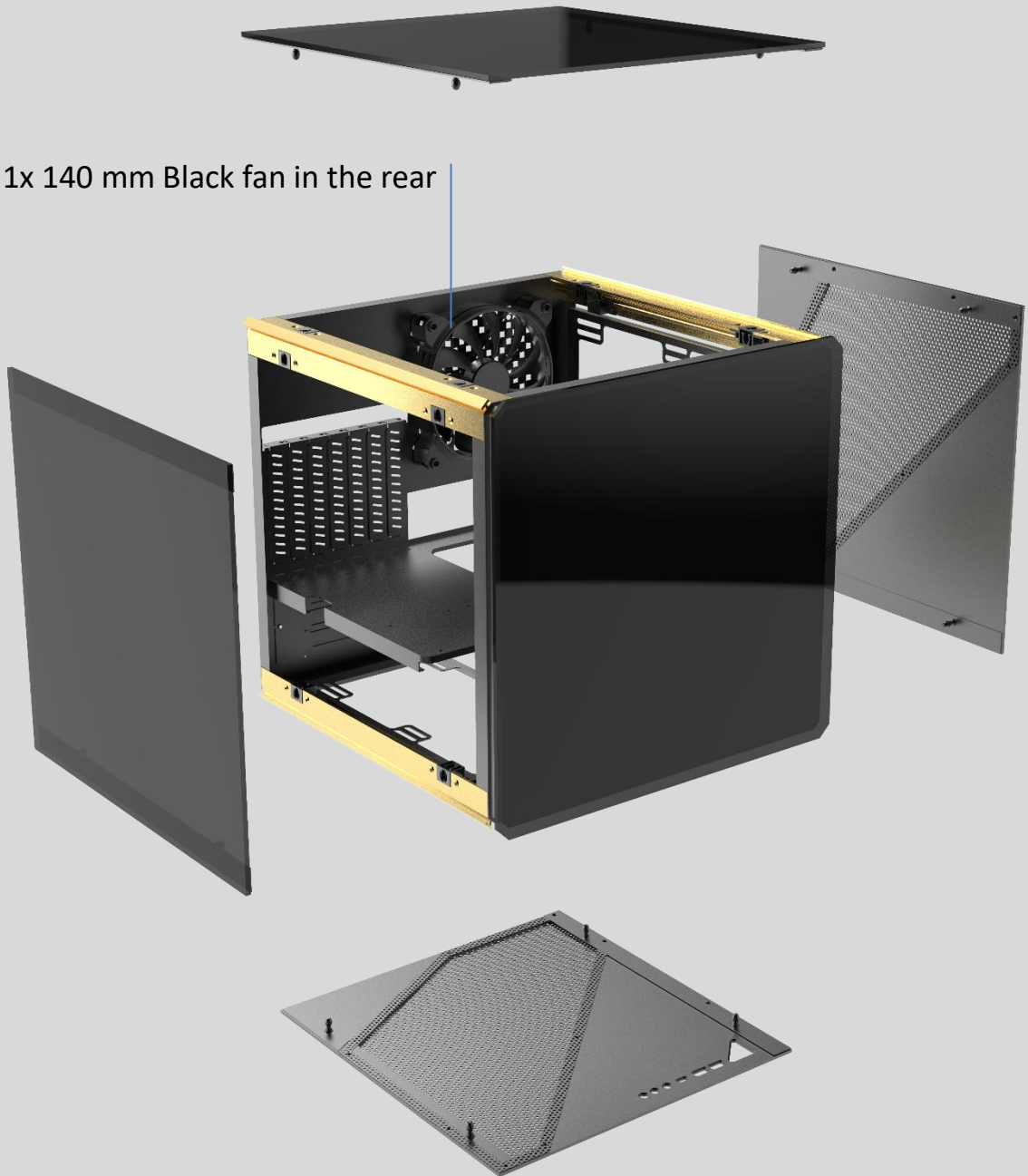
AZZA

R E G I S

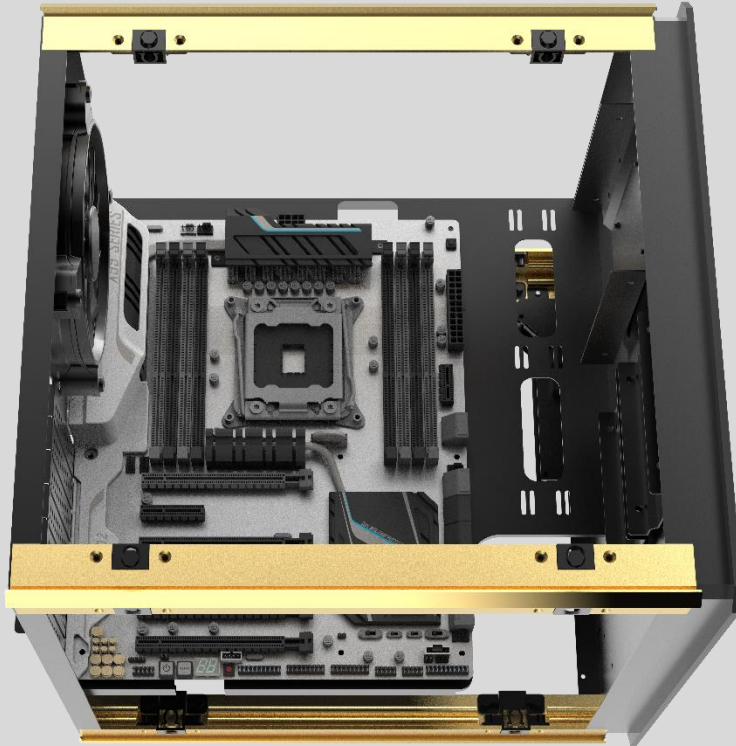
| Model | |
|------------------------------------|---|
| Model Name | Regis |
| Model Number | CSAZ-902 |
| Specifications | |
| Type | ATX Cube Enclosure |
| Color | Smoke Gray with Gold trim and Black glass (exterior) / Black (interior) |
| Side Panels | 3 Tempered glass panels 2 Anodized brushed-aluminum side panels |
| Max CPU Cooler Height | UP to 210mm |
| Max Video Card Length | Up to 336mm (Horizontal) Up to 320mm (Vertical) |
| Power Supply | Not Included |
| Motherboard Compatibility | ATX, Micro-ATX, Mini-ITX |
| Expansion | |
| External 5.25" Drive Bays | 0 |
| Internal 2.5" Drive Bays | Up to 2 |
| Internal 3.5" Drive Bays | 1 |
| Expansion Slots | 7 (Horizontal) + 3 (Vertical) |
| I/O Ports | Power button, LED button, HD Audio, USB 3.0 x2, Type C x1 |
| Lighting Effects | |
| Digital RGB Lighting Effects | An infinity mirror lighting design and backlit logo populates the front of the case. All digital RGB lighting devices can be controlled with the included AZZA hub or with motherboard software through onboard 3-pin ARGB headers. |
| Physical Specifications | |
| Dimensions with Case Stand (HxWxD) | 610 x 481 x 529 mm / 24 x 19 x 21 inches |
| Weight | 12.5 kg / 27.6lbs |
| Features | |
| Tempered Glass | High-quality tempered glass side panels allows for clear visuals of inner components |
| Available Fan Ports | 2x 120 mm or 2x 140 mm ports on the right 2x 120 mm or 2x 140 mm ports on the left 1x 120 mm or 1x 140 mm port in the rear |
| Included Fan | 1x 140 mm Black fan in the rear |
| Radiator Support | Supports radiators up 240 mm / 280 mm on the right Supports radiators up 240 mm / 280 mm on the left |
| Accessories | 1x Case Stand 1x AZZA Hub |
| | NG:12.5kg WG:16kg |

1. Side panels can be easily disassembled.

1x 140 mm Black fan in the rear



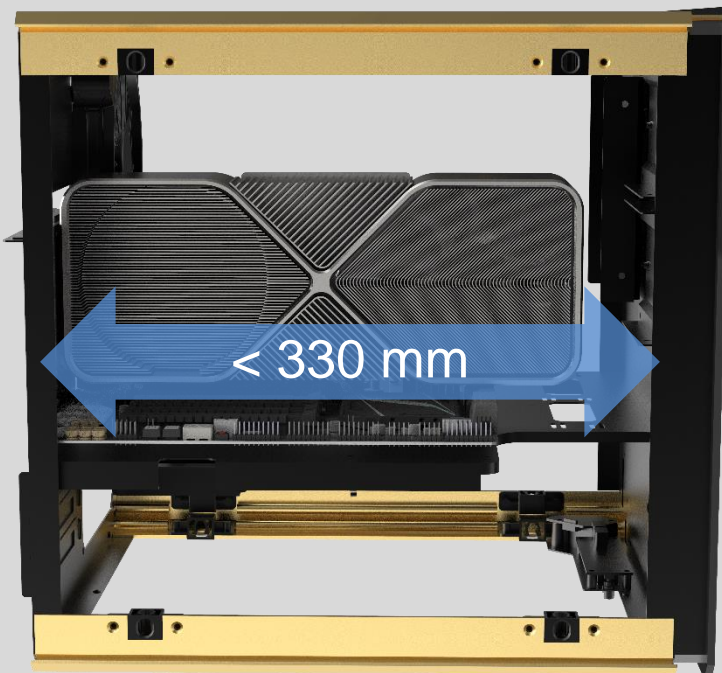
2. Motherboard Installation.



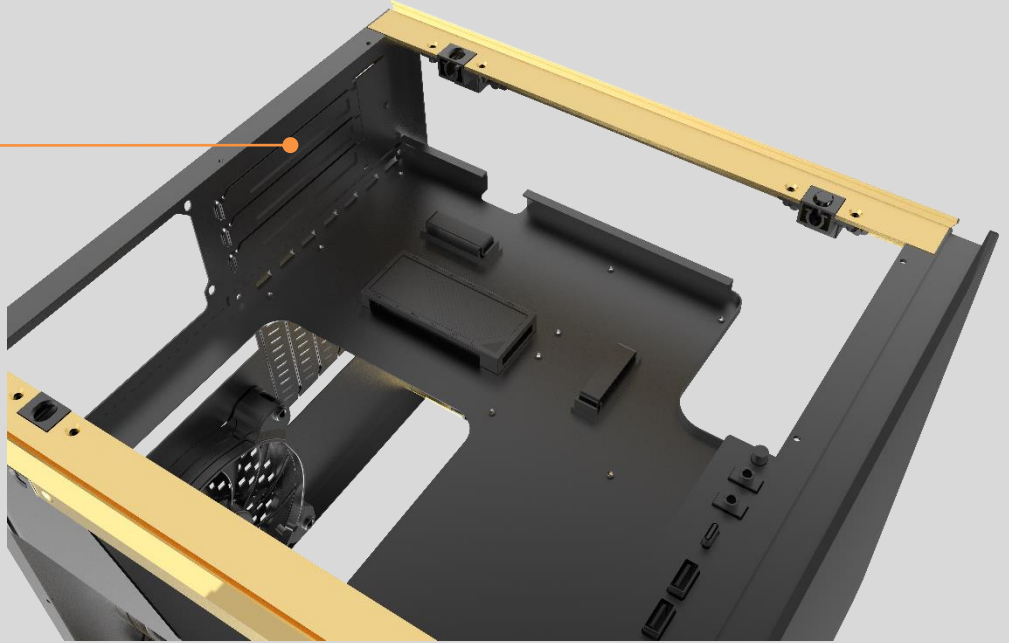
3. Graphics card have two options for location :

1. On the motherboard
2. On the side by connect PCIE cable.

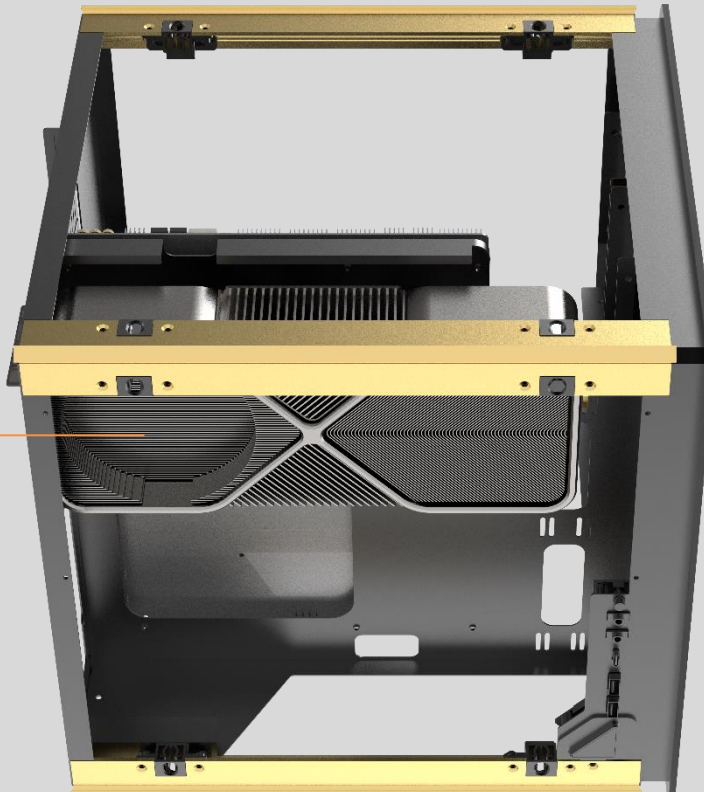
PS: If length >300, the SSD tray needs to be removed.



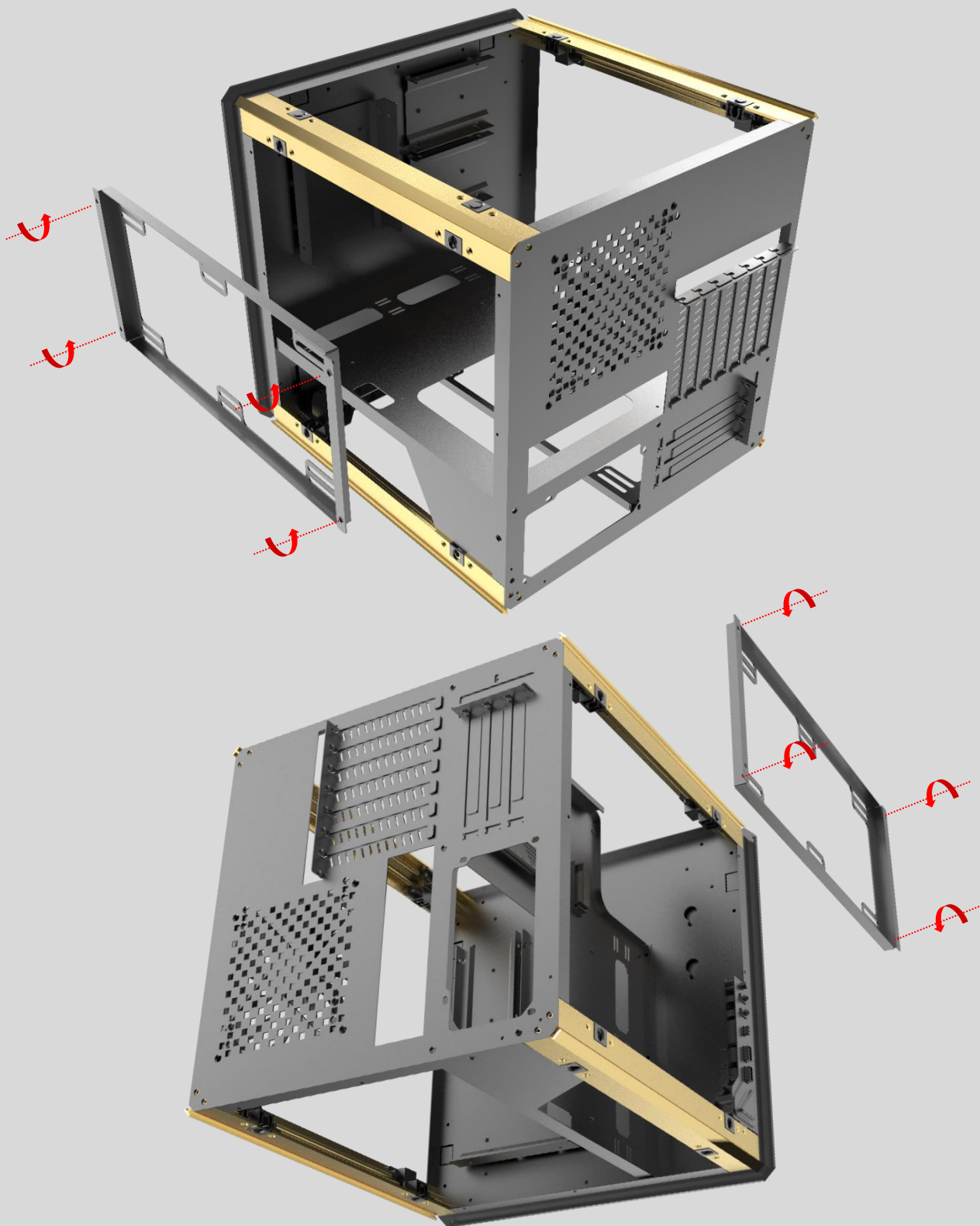
4. Another graphics card installation :



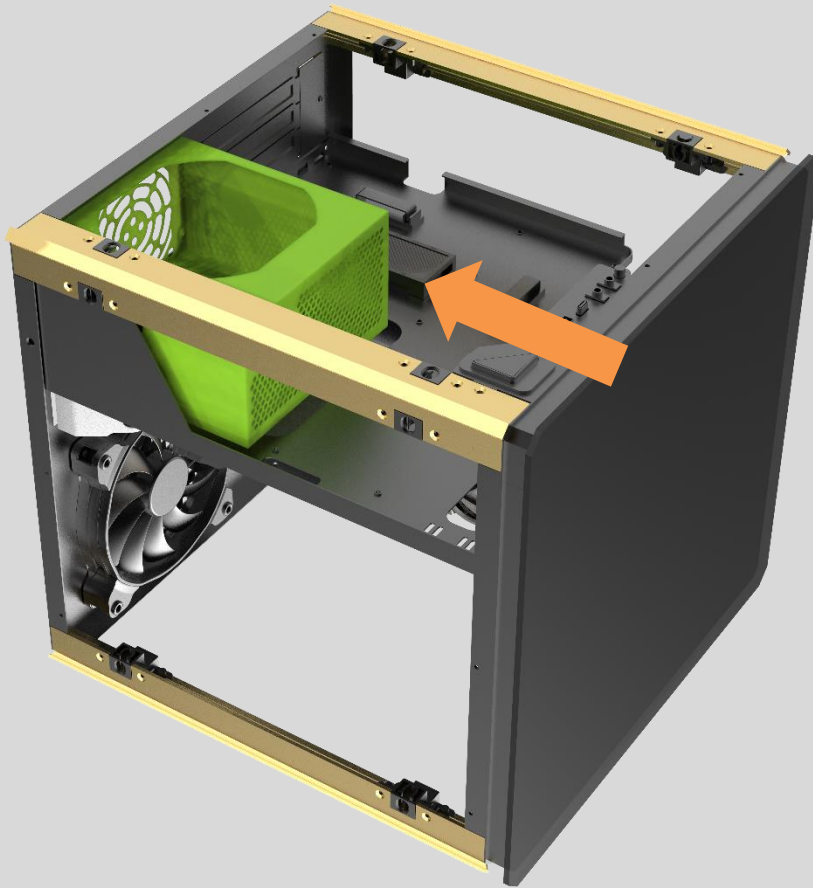
- You can install it here to increase the heat dissipation of the graphics card.



5. Supports radiators up 240 mm / 280 mm on the right
Supports radiators up 240 mm / 280 mm on the left

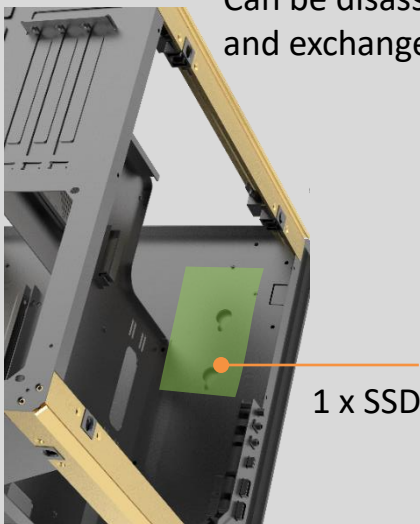


6. Power supply Installation.

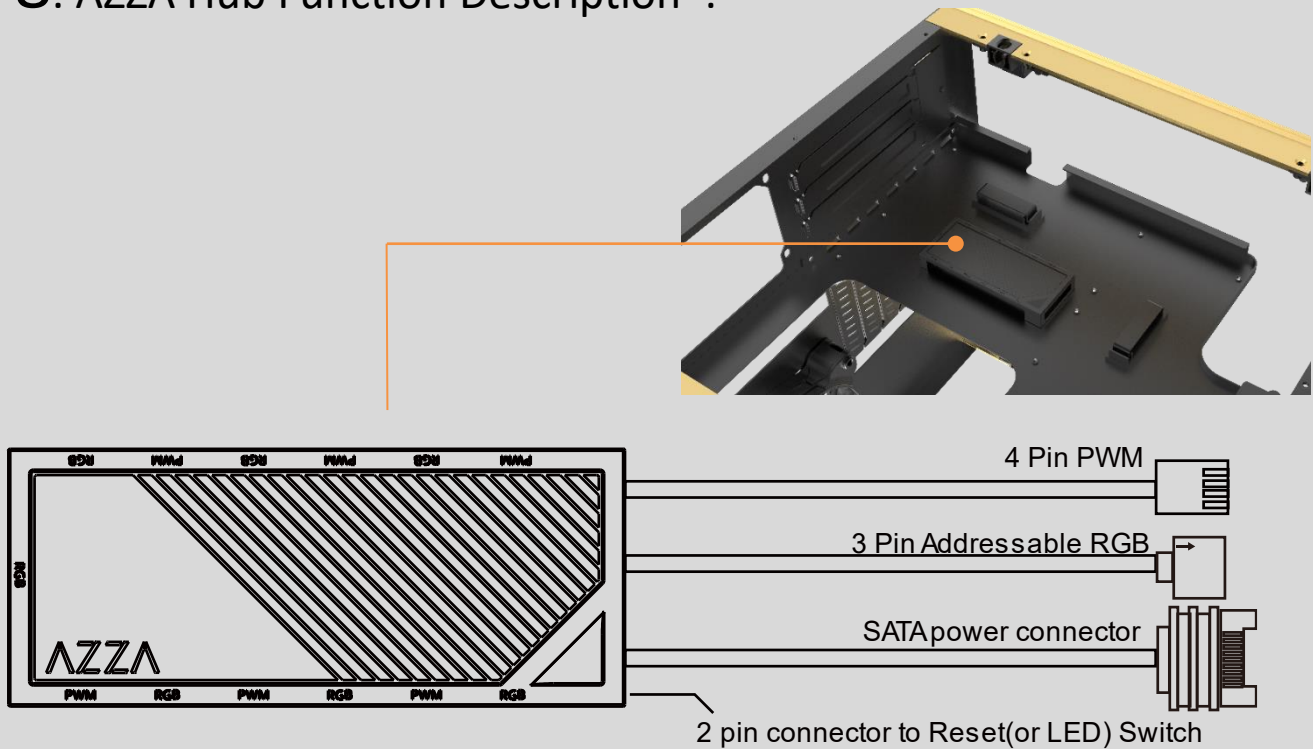


7. HDD & SSD Installation.

1 x HDD
2 x SSD
Can be disassembled
and exchanged.



8. AZZA Hub Function Description :



Ports and connectors

- 1.) 7x3 pin ARGB ports (supports ARGB devices: ARGB fan, ARGB strips...etc)
- 2.) 6x4 pin PWM fan ports
- 3.) 1x2 pin connector to Reset (or LED) switch
- 4.) 1xSATApower connector
- 5.) 1x3 pin ARGB connector to MB
- 6.) 1x4pin PWM fan connector to MB

Functions:

- 1.) Total of 17 lighting modes
- 2.) Lighting modes can be controlled by Reset (or LED) switch, or can be controlled by MB.

(Hold the LED button for 3 seconds to switch the RGB control function between motherboard RGB software and LED button)

A.) Magnet on the back of the hub box or using velcro on the back of the hub box, it can put in any place inside the metal part of the case.

B.) 6 sets of ARGB port next to PWM port to ease the connection on fans

O
f

t
h
e

K
i
n
g