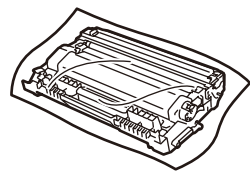
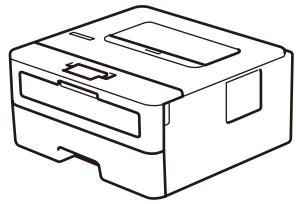
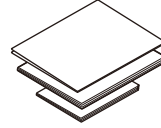




Unpack the machine and check the components



Drum Unit and Inbox Toner Cartridge



Quick Setup Guide  
Reference Guide (only for certain models)  
Product Safety Guide



Brother Installation Disc



AC Power Cord  
(only for certain models)

NOTE:

- The components included in the box may differ depending on your country.
- Interface cables are not included. You must purchase the correct interface cable if you require one.

USB cable

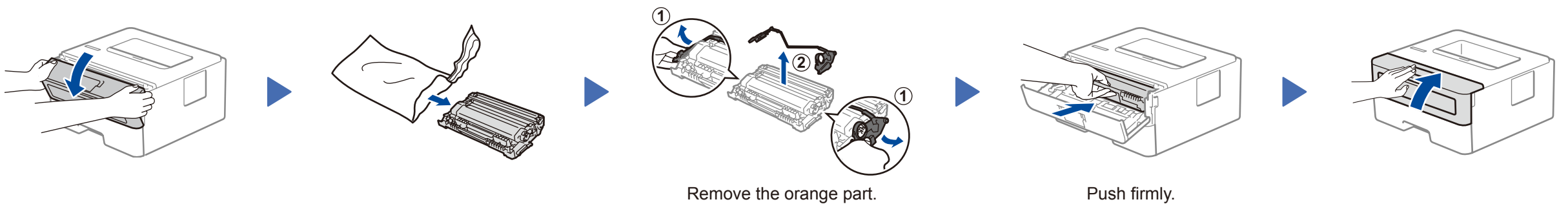
We recommend using a USB 2.0 cable (Type A/B) that is no more than 2 metres long.

- The illustrations in this *Quick Setup Guide* show the HL-L2310D.
- The *Reference Guide* is available on the provided Brother Installation Disc in countries where it is not included in the box.

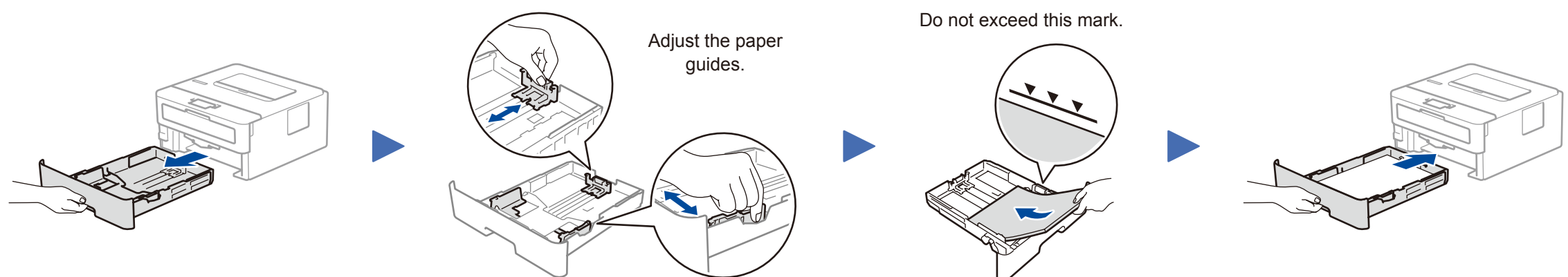


Watch our Video FAQs for help with setting up your Brother machine:  
[support.brother.com/videos](http://support.brother.com/videos).

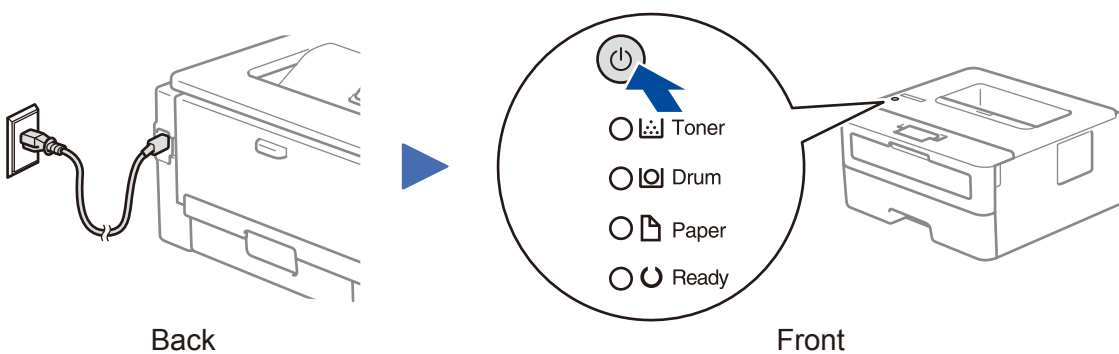
1 Remove the packing materials and install the drum unit and toner cartridge assembly



2 Load paper in the paper tray



3 Connect the power cord and turn the machine on



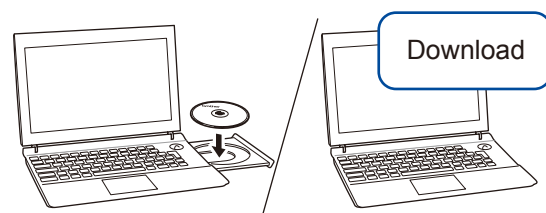
Printer LED Indications

Blinking: ☀ ON: ● or ● OFF: ○

	Toner Low <sup>1</sup>	Replace Toner	Drum End Soon <sup>1</sup>	Replace Drum	Drum ! <sup>2</sup>	Paper Jam / Cover is Open <sup>2</sup>	No Paper
Toner	☀	●	○	○	○	○	○
Drum	○	○	☀	●	☀	○	○
Paper	○	○	○	○	○	☀	●
Ready	●	○	●	●	○	○	○

- The yellow LED will blink in a pattern of ON for 2 seconds and then OFF for 3 seconds.
- The LED will blink ON and OFF at 0.5 second intervals.

4 Connect your computer



Put the installation disc into your CD/DVD drive, or download the Full Driver & Software Package at:

For Windows®: [support.brother.com/windows](http://support.brother.com/windows)  
For Mac: [support.brother.com/mac](http://support.brother.com/mac)

If you are using a recently released operating system on your computer, visit the above websites for updated driver and software information.

Brother regularly updates firmware to add features and apply bug fixes. To check for the latest firmware, visit [support.brother.com/up5](http://support.brother.com/up5).

Follow the on-screen instructions and prompts.

Finished

For Windows®:  
If the Brother screen does not appear automatically, go to **Computer (This PC)**. Double-click the CD/DVD-ROM icon, and then double-click **start.exe**.

For Mac:  
For full driver functionality, we recommend choosing the **CUPS driver** when adding a printer.

Can't Connect? Check the following:



USB connection

Disconnect the cable.

Restart your machine and computer, and then go to 4.

If still not successful, visit [support.brother.com](http://support.brother.com) for FAQs & Troubleshooting.