

## IMPORTANT NOTICES

Dear Customer, thank you for choosing Vera, the kettle from Bugatti. Like any domestic appliance, this kettle must be used with care and attention to prevent people getting burnt and the kettle getting damaged.

**BEFORE USING THE KETTLE FOR THE FIRST TIME, READ ALL THE INSTRUCTIONS ON INSTALLATION, USE AND MAINTENANCE AND THE SAFETY INSTRUCTIONS CAREFULLY. DO NOT USE THE KETTLE UNLESS YOU ARE THOROUGHLY FAMILIAR WITH THE INSTRUCTIONS.**

**WARNING**

No liability is accepted for damage due to:

- incorrect use or use other than for its intended purpose
- using the kettle continuously
- repairs carried out by unauthorized persons
- use of non-original spare parts or accessories
- plug-in Vera kettle in a non-earthed socket

For further information, or in the event of problems that have not been sufficiently addressed in these instructions, contact Customer Care at BUGATTI .

**SAVE THESE INSTRUCTIONS CAREFULLY** and remember to pass them on to those who will use the kettle after you. If the instructions are lost before you use the kettle, request the instruction booklet from Customer Care at BUGATTI or send an e-mail to [diva@casabugatti.it](mailto:diva@casabugatti.it) or download it from [www.casabugatti.it](http://www.casabugatti.it). On the first page of the cover you will find the illustrations relating to the text. Keep the first page open as you read the instructions on use.

# Contents

Pag. 13

Technical features

Pag. 13

Description of kettle parts

Pag. 14

Important safeguards

Pag. 16

Installation and starting up

Pag. 17

Automatic shutdown

Pag. 17

Safety system

Pag. 17

Cleaning and maintenance

Pag. 18

Troubleshooting

Pag. 19

Warranty

All the details of the text have been carefully checked. Our company reserves the full right to explain the elaboration of the text if there is any printing error or misleading information. Note: please be reminded that our company keeps updated every product detail shown on the instruction book, including technical specification. We reserve to revise the instruction book without prior notice. All product's outlook, shape and color are based on the standard of actual physical products.

## TECHNICAL FEATURES

Power supply	See rating plate underneath machine
Power rating	See rating plate underneath machine
Dimensions	220 x 180 x h. 300 mm - 8 1/2 " x 7" x 11 3/4 " approximately
Body	Pressed Solid 18/10 Stainless Steel
Weight	1,4 kg - 3 Pounds approximately
Length of power supply cord	0,75 meter - 30 inches approximately
Thermal overload protection	Built in
Kettle capacity	1,70 litres / 57.48 US fl.oz / 59.80 UK fl.oz
Certifications	See rating plate underneath machine
Warranty	As per attached certificate

## DESCRIPTION OF KETTLE PARTS

Lid  
 Stay-cool handle  
 18/10 stainless steel kettle  
 Power base unit  
 Connector  
 Plug  
 Filter  
 Water maximum level mark  
 On/Off button

①  
 ③  
 ④  
 ⑤  
 ⑤a  
 ⑥  
 ⑦  
 ⑧  
 ⑨

# IMPORTANT SAFEGUARDS

When using electrical appliances, basic safety precautions should always be followed, including the following:

**READ ALL INSTRUCTIONS CAREFULLY. THE KETTLE MUST BE USED ONLY BY ADULTS WHO HAVE BEEN TRAINED IN ITS USE.**

**SAVE THESE INSTRUCTIONS CAREFULLY.**

**1. TO PREVENT SERIOUS INJURIES, ELECTRIC SHOCKS AND FIRE DO NOT IMMERSE CORDS, PLUGS, POWER BASE OR THE KETTLE ITSELF IN WATER OR OTHER LIQUIDS, EITHER PARTIALLY OR TOTALLY.**

**WARNING: DANGER OF BURNS!**

**PAY ATTENTION TO HOT SURFACES!**

Do not touch hot surfaces. Use only the handle to pick-up the kettle. Use an oven glove when touching hot parts such as body (4), lid (1) and all surfaces of the kettle:

**DANGER OF BURNS!**

**2. The kettle has been designed for HOUSEHOLD USE ONLY.**

This appliance is intended to be used in household and similar applications such as:


- staff kitchen areas in shops, offices and other working environments;
- farm houses;
- by clients in hotels, motels and other residential type environments;
- bed and breakfast type environments.

Use kettle only for its intended use. Do not make any technical modifications that might cause risks.

3. Keep the kettle, the base (5) and the cable out of reach of children under 8 years old. Close supervision is necessary when any appliance is used by or near children. Unplug from outlet when not in use and before cleaning. Allow to cool before putting on or taking off parts, and before cleaning the appliance. Always attach plug to appliance first, then plug cord into the wall outlet. To disconnect, turn any control to "off", then remove plug from wall outlet.

4. A short power cord with plug is supplied to reduce the risk of becoming entangled in objects, to prevent people from tripping over it and to prevent the cord from wrapping around a longer cord. Long detachable power cords or extension cords are available but they may be used only if a QUALIFIED ELECTRICIAN can confirm that they comply with wiring regulations. DO NOT USE plug/socket adapters. If a long detachable power cord or extension cord is used:

a) The electrical rating of the detachable power cord or extension cord should be at least as powerful as the electrical rating of the kettle indicated underneath the kettle itself.

- b) The extension cord must be of the 3-wire/pole type and must be earthed. A long cord or extension cord must never protrude from furniture or over counter tops or table tops where it may be pulled on by children or tripped over.
- c) Do not place kettle or cords on or near a hot gas ring or electric hotplate, or in or near the oven.
- d) Do not use outdoors.
- Do not let the cords hang over the edge of the table or counter, or touch hot surfaces.
- Do not operate the kettle with a damaged cord or plug or after the appliance develops faults, or has been damaged in any manner. Return appliance to the nearest authorized service facility for examination or repair. The use of accessory attachments not recommended by the appliances manufacturer may result in fire, electric shock or serious injuries to persons.
- e) If the power cable or plugs are damaged, they must be replaced by the manufacturer or with authorized service centre or by a qualified person in order to prevent all risks.
5. Never touch live electrical parts. They may cause electric shocks and serious personal injury. Connect the power base unit (5) to a wall socket having the appropriate voltage. The voltage must correspond to the voltage indicated on the rating plate underneath the kettle (4). Make sure that the socket that you are using is earthed . Do not use the kettle with bare or wet feet.
6. The kettle is only to be used with the base (5) provided.
7. WARNING: avoid spillage of water or other liquids on the base (5) and on the connector (5a).
8. WARNING: Never fill the kettle above 1,70 litres (57.48 US fl.oz / 59.80 UK fl.oz), the «MAX» mark on the display panel (8).
9. WARNING: Never fill the kettle with water when it is positioned on the power base unit (5).
10. WARNING: Only fill the kettle with clean water. No milk, coffee or others.
11. WARNING: Never operate the kettle unattended.
12. WARNING: Never operate the kettle without water. A mistaken use limits the life of the kettle.
13. WARNING: Never keep pushed the on/off button (9) during a boiling session or after a boiling session.
14. WARNING: Never boil water if the kettle is overfilled or with the lid (1) open. Boiling water may splash out and hurt people.
15. Always ensure that you pour out boiling water slowly and carefully.
16. To prevent burns avoid to open the lid (1) when the water is being boiled or just after the kettle has switched off.
- STEAM MAY BURN!**
- Be careful when opening the lid (1), if the kettle is still hot and you wish to refill it with water. Boiling water can cause burns.
17. After every boiling session completely empty the kettle. Never leave water in the kettle for a long period of time.
18. Be careful: hot surfaces. Use handles or knobs or wear oven gloves. Be very careful when touching very hot parts such as lid (1), body (4) and all surfaces of the kettle. WARNING! DANGER OF BURNS! The kettle body (4) and lid (1) become very hot during use.
19. The heating element surface is subject to residual heat after use.
20. To disconnect verify that the kettle is switched off and remove the plug (6) from the wall outlet. Always unplug the appliance by holding the plug not the cord. Note: Remove plug from wall outlet when you are not using the kettle.
21. Place the kettle on a flat surface, making sure that the feet adhere firmly to the support surface so that the appliance cannot be overturned. Do not place the kettle on or near hot surfaces or near naked flames.
- CAUTION: Do not operate the kettle on an inclined surface.
22. To be sure that the kettle works correctly, place it on a flat surface in an adequately lighted and hygienic environment with an easily accessible electrical socket. Keep the kettle at least 10 cm (4 inches) away from the walls.
23. Do not use the kettle under or near flammable material such as curtains, wallpaper, walls.
24. In the event of faults, defects or suspected faults after a fall, unplug the kettle immediately. Never start up a faulty appliance. The repairs must be carried out by the BUGATTI Service Centre. Contact your dealer and/or contact Customer Care at BUGATTI or send an e-mail to [diva@casabugatti.it](mailto:diva@casabugatti.it). In the event of fire, use carbondioxide (CO2) extinguishers. Do not use water or powder extinguishers.

## Installation and starting up

The original packaging has been designed for dispatch by post. Keep it in case you need to return the kettle to the supplier. Before installing the kettle, comply with all the points of the safety instructions on the previous pages. After removing the kettle from its packaging, make sure that it is in perfect condition and make sure that no kind of matter, packaging material, warranty sheets or the like have accidentally fallen inside the kettle during transport or when opening the packaging.

The plastic bag in which the kettle is packaged should be kept out of reach of children as it poses a suffocation hazard. Be sure that the kettle is in perfect conditions. In order to remove dust that may have accumulated on the exterior surfaces of the kettle, simply dust it off with a dry soft cloth.

After you have carried out the above steps and have strictly followed the safety standards, proceed to connect to the power supply.

Connecting to power supply: electric current can kill! Follow safety instructions!

Plug the power cord (6) of the Vera kettle into a power socket of the same voltage of the one indicated on the rating plate underneath the kettle.

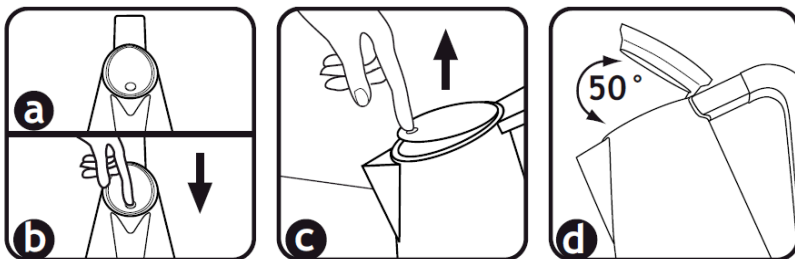
Rinse out carefully all the internal surfaces and the spout of the kettle: fill the kettle with water until the maximum level (1700 ml/ 57.48 US fl.oz / 59.80 UK fl.oz), boil it and empty the boiler. Repeat at least two times.

Fill the kettle:

a) remove the kettle body from the power base unit (5). Hold it by the handle (3)

b) open the lid (1) : press on the rubber “point” (picture “a”) on the lid (1) and press down firmly (picture “b”). Then release (picture “c”) and the lid (1) will open automatically. The lid (1) is not removable and the max opening is shown in the picture “d”.

c) fill the kettle with water directly under the tap or fill it by pouring water from a bottle, jug or jar to the needed level. Do not overfill the kettle. Be careful not to go over 1700 ml (57.48 US fl.oz / 59.80 UK fl.oz).



d) close the lid (1) : press on the rubber “point” (picture “a”) on the lid (1). Never operate the kettle with the lid (1) open.

e) Put the kettle on the base (5).

f) To boil water just push on the on/off button (9). The light in the on/off button (9) shows that the kettle is working.

When the boiling session is finished, the kettle automatically switches off.

To disconnect, make sure that the kettle is not running. Do not unplug the kettle from the wall outlet by pulling on the cord. Always unplug the appliance by holding the plug (6). To switch off completely the device, the plug (6) has to be removed from the socket.

Make sure that the electric socket that you are using is suitably earthed.  
Never allow parts carrying live voltage to come into contact with water: it may cause a short circuit!!!  
(follow all the safety instructions specified before).  
Be careful: never keep the on/off button (9) pushed during or after every boiling session.  
Be careful: never operate the kettle without water.

## Automatic shutdown

The kettle is equipped with a system that automatically switches off the device shortly after the water is boiled.  
If warm water is desired, the heating process can be stopped anytime by pulling the on/off button (9). The shutdown takes place automatically as the kettle is removed from its base (5).  
For functional reasons, some condensations may appear at the bottom of the on/off button (9), on the base (5) and on the connector (5a). This happens for technical reasons and does not bear on the safety of the device.

## Safety system

A thermostat protects the kettle from overheating: if the device is accidentally switched on empty, this system automatically switches off the device. The device will restart its normal functions in around 10 minutes.  
If the first thermostat protection would not function due to improper use, another temperature limiter ensures protection.

## Cleaning and maintenance

**CAUTION:** Always disconnect the kettle from the electrical outlet before cleaning.  
Before cleaning, be sure the kettle is cold.  
Clean the exterior surface of the kettle with a clean, damp cloth to preserve its original highly polished finish. Dry and polish with a soft cloth.  
Do not use abrasive cleansers or scouring agents of any kind on the interior or exterior of the kettle.  
Do not immerse the kettle or power base in water or other liquid, and be sure that the electric kettle plug (6) and connector (5a) of the power base (5) is kept dry.

### a) Filter (7)

Scale, or calcium, is a natural substance that forms when hard water is boiled. The filter serves to retain the calcium in the water kettle. It is important to clean the filter regularly. The filter clips into the spout and can be removed by pulling it up from the spout. It can be cleaned by gently brushing with a soft brush under running water.

**ATTENTION:** This operation can be performed only when the kettle is not working and when the kettle has cooled down. **DO NOT REMOVE THE FILTER WHEN VERA KETTLE IS WORKING AND WHEN THE SUFACE IS HOT. BOILED WATER AND STEAM CAN BURN!!!**

### b) Decalcification

Decalcification refers to removing the calcium deposits which may form in the interior metal parts of the kettle. **TO GET THE BEST PERFORMANCE FROM YOUR VERA KETTLE, DECALCIFY YOUR UNIT FROM TIME TO TIME.** Frequency depends on the hardness of your tap water and how often you use the kettle. We suggest to do it every 100-200 boiling cycles, or every two weeks or every time you see white spots on the internal bottom surface of the kettle: it means that there is limestone sediment. We suggest use of a kettle descaler in order to dissolve these chalky deposits or lime build up. Follow the instructions on the descaler

package. By the way BUGATTI suggests the following natural way: if a commercial descaler is not available, fill the kettle with 500 ml (16,90 US oz/ 17,59 UK oz) white vinegar and 500 ml (16,90 US oz/ 17,59 UK oz) water. Use a soft brush together with vinegar to clean the plastic water level sensor holder in order to remove the chalky deposit. Bring the vinegar to a boil. You may need to repeat this several times with cooled vinegar to remove the calcium build up completely. When the descaling process is complete, empty the kettle and rinse out several times with clean water.

Any other servicing should be performed by an authorized service representative.

## Troubleshooting

If the Vera kettle develops faults or defects or if irregularities are suspected, unplug it immediately. If you cannot eliminate the fault by following the instructions in this manual, contact Customer Care at BUGATTI. Repairs carried out incorrectly expose the user to grave danger. No liability is accepted for damage or injury caused by repairs carried out incorrectly and in such cases warranty rights are voided.

TROUBLE	POSSIBLE CAUSE	SOLUTION
The kettle does not work properly or stops before boiling.	There is lime scale into the kettle.	Make the descaling as for point b) of the Cleaning and maintenance chapter.
If the water tastes bad.	1) Water is in the kettle for more then 12 hours.  2)The kettle is not well washed after the descaling cycle.	1) We suggest to change the residual water after each boiling cycles.  2)Rinse the kettle sufficient times in order to remove completely the descaling product.
The kettle is switched on and after a few seconds it automatically switches off.	The kettle is empty and the protection system of the resistance is working.	Wait approximately 10 minutes, fill the kettle with water and switch it on.



## Warranty

- 1) A warranty is deemed to be the replacement or repair free of charge of the parts making up the kettle that were faulty at the time of purchase due to manufacturing faults.
- 2) In the case of irreparable or repeated faults which are due to manufacturing faults as above, at the manufacturer's sole discretion, the machine will be replaced.
- 3) The warranty does not cover damage due to:
  - a) incorrect or faulty use
  - b) defects caused by accidental breakages or carelessness
  - c) failure to follow instructions and warnings, incorrect installation, cleaning and maintenance
  - d) maintenance and/or modifications performed by unauthorized personnel
  - e) use of non-original spare parts
  - f) carriage
  - g) using any kettle function without water continuously
  - h) any other circumstance that cannot be ascribed to manufacturing faults. Any claims not envisaged by law are excluded.
- 4) The warranty does not cover damage due to improper use and in particular due to non-domestic use.
- 5) The manufacturer accepts no liability for any direct or indirect harm or injury to persons, things and domestic animals that may arise from failure to abide by all the safety instructions contained in this manual, especially failure to abide by the instructions on installation, use and maintenance of the kettle.
- 6) Replacement or repair shall not extend the warranty period. The warranty does not cover the replacement of consumables, such as the resistances, battery, etc.
- 7) The warranty runs from the date of receipt of evidence of purchase and of receipt of the warranty card by BUGATTI.

## SERVICE CENTRE

In the event of a kettle fault, contact an authorized BUGATTI dealer, who will return the kettle to the manufacturer. The purchaser is responsible for all carriage and/or dispatch costs for all repairs covered or not covered by warranty. If possible, keep the kettle's original packing for dispatch.

Important: If the nonconforming product is to be serviced by someone other than contact an authorized BUGATTI dealer, please remind the service to call our Consumer Service Center to ensure that the problem is properly diagnosed, the product serviced with the correct parts, and to ensure that the product is still under warranty.



### DISPOSAL OF THE PRODUCT IN CONFORMITY TO EUROPEAN DIRECTIVE 2002/96/EC.

At the end of its working life the product must not be disposed of alongside urban waste. It can be delivered to local-authority separated waste collection centres or to dealers who provide this service. Separated disposal of a household appliance enables possible negative consequences for the environment and health arising from improper disposal to be eliminated and enables the materials of which it is made to be recovered in order to make significant power and resource savings. The symbol of a moveable waste bin marked with a cross displayed on the product indicates that as a household appliance it must be disposed of separately.