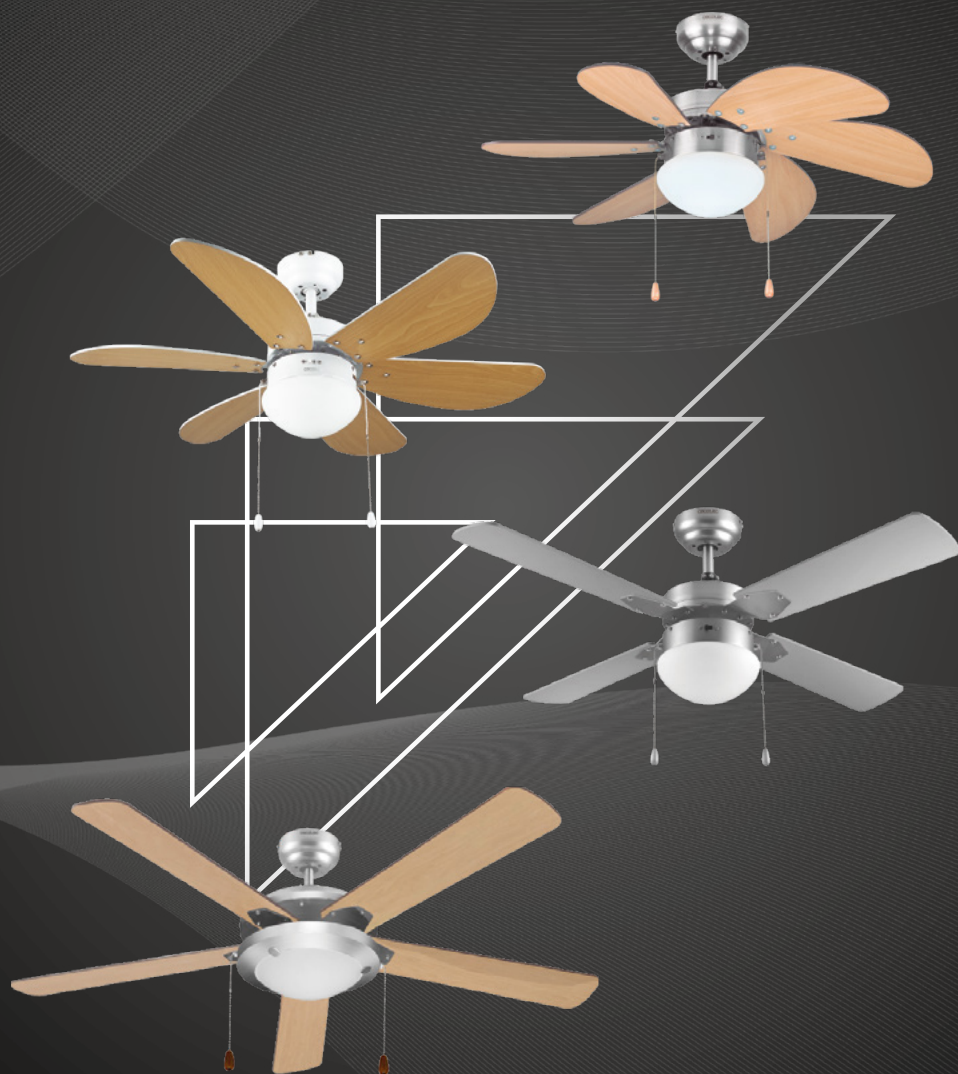


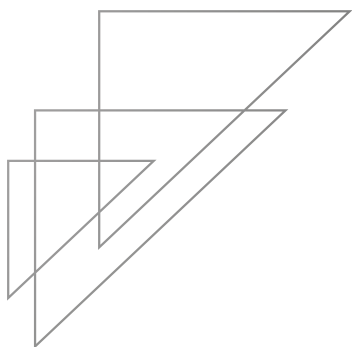
cecotec

FORCESILENCE AERO 350/360/450/540

Ceiling fan



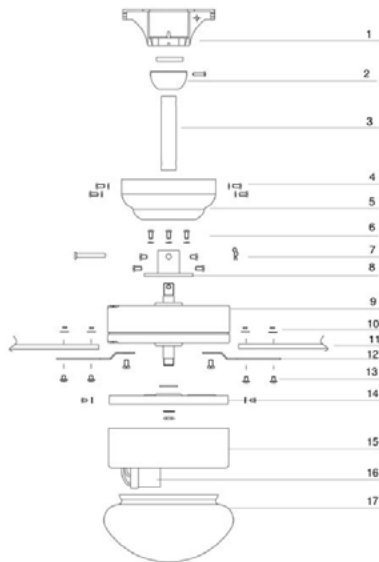
Instruction manual



INDEX

1. Parts and components
2. Safety instructions
3. Before use
4. Product assembly
5. Operation
6. Cleaning and maintenance
7. Technical specifications
8. Disposal of old electrical appliances
9. Technical support service and warranty

1. Parts and components



1. Mounting bracket
2. Hanging ball
3. Downrod
4. Screws I
5. Canopy
6. Screws II
7. Clevis pin
8. Mounting plate
9. Motor
10. Screw and washer
11. Blades
12. Blade assembly disc
13. Screws III
14. Light base plate
15. Lamp bracket
16. Bulb holder
17. Glass shade

SAFETY INSTRUCTIONS

Read these instructions thoroughly before using the appliance. Keep this instruction manual for future reference or new users.

- Make sure that the mains voltage matches the voltage stated on the rating label of the appliance
- Check the power cord regularly for visible damage. If the cord is damaged, it must be replaced by the official Technical Support Service of Cecotec, in order to avoid any type of danger.

WARNING: do not use the appliance if its cord, plug, or housing is damaged, nor after it malfunctions or has been dropped or damaged in any way.

- Do not use the appliance in confined spaces with explosive or toxic vapours.
- The appliance is not intended to be used by children under the age of 8. It can be used by children over the age of 8, as long as they are given continuous supervision.
- This appliance is not intended to be used by persons with reduced physical, sensory, or mental capabilities, or lack of experience or knowledge, unless they have been given supervision or instruction concerning the use of the appliance in a safe way by a person responsible for their safety, and understand the hazards involved.
- Supervise young children to make sure that they do not play

with the appliance. Close supervision is necessary when the appliance is being used by or near children.

- Keep the appliance and its cord out of reach of children under the age of 8.
- Do not try to repair the appliance by yourself. Contact the official Technical Support Service of Cecotec for advice.
- Cleaning and maintenance must be carried out according to this instruction manual to make sure the appliance functions properly. Turn off and unplug the appliance before cleaning it.
- Cleaning and maintenance tasks must not be carried out by children.
- Make sure the fan is not placed near drapes, curtains, or any objects that may be drawn into the fan.
- Never attach the fan to a power point, but to the ceiling itself.
- The minimum distance between the fan blades and the floor must be 2.3 m. The minimum carrying capacity of the outlet box from which the fan is hung must be 100 kg.
- Make sure you install all-poles disconnection switch with a minimum distance of 3 mm between poles in the supply wiring to the ceiling fan.
- Switch off the power before connecting or repairing the fan.
- The electrical wiring must be in accordance with the local regulations.

- The fan must be properly grounded to avoid the risk of electric shocks.
- Never mount the fan in a moist or wet room.
- Be careful when working near the rotating blades.
- This appliance must be installed in accordance with the national electrical installation regulations.

WARNING: In order to ensure your children's' safety, please keep all packaging (plastic bags, boxes, polystyrene etc.) away from their reach.

IMPORTANT: Shut off the main electric switch during installation or maintenance. It is recommended to switch off the plug of the automatic switch before the fan (It is not enough to switch off)

WARNING: This product is designed for household only, do not use it for commercial or industrial purposes.

3. BEFORE USE

Carefully open the ceiling fan's box, take all the components out and place them on a cloth or soft surface to avoid damage. Do not lay the motor's box on its sides, the housing could be damaged. Before starting the assembly, make sure all the parts and components are included.

4. PRODUCT ASSEMBLY

WARNING: to avoid electric shocks, turn the household power supply off before starting the ceiling fan installation.

1. Remove the 4 screws that fix the canopy and the mounting bracket and separate these 2 pieces.
2. Remove the pin and the screw that fix the hanging ball and the downrod and separate both pieces.
3. Pass the fan body's cables through the canopy's hole.

4. Pass the same cables through the hanging ball.
5. Then, pass the cables again through the downrod. Fix the downrod to the mounting plate using the clevis pin and 2 screws provided. Make sure both pieces are securely fixed.
6. Insert the pin through the pin holes located on the upper end of the downrod. Once it is inserted, slide the hanging ball towards the top in order to place it in the same downrod's upper end and fix it with one of the screws provided. Make sure the pin fits in the slots located inside the hanging ball before screwing it.
7. Use both self-tapping screws provided with its corresponding washers and lock washers to fix the mounting bracket to a wooden ceiling.

NOTE: self-tapping screws are only suitable for wooden ceilings. In case of installing the ceiling fan to concrete ceilings or joists, use a drill for making the holes and stoppers or expansion screws (not included).

8. Once the mounting bracket is screwed to the ceiling, connect the mains power supply to the fan's terminal block. Make sure the cables are connected properly paying attention to the colour codes and that there is an earthed cable (green and yellow).
9. Lift the fan previously mounted to the mounting bracket and insert the hanging ball through the mounting bracket's hole.
10. Connect the cables that come out from the downrod to those from the mounting bracket paying attention to the colour codes.
11. Slide the canopy upwards so that all the connections are stored inside it and screw it to the mounting bracket using the 4 screws (2 to each side) removed at the beginning of the installation process.
12. Remove the screws located on the motor's lower part through the lamp bracket's hole.
13. Screw the blade brackets to the motor through the hole in the lamp bracket paying attention to the warning sticker located on one of the blade brackets.
14. Screw the blades to the blade supports using screws, washers and nuts provided. As blades are reversible, choose the side you desire to be visible and screw them in such way that the nuts are located on the blade's top part.
15. Tighten the bulb to the bulb hanger (not included).
16. Fit the glass shade into the unit's lower part introducing the lamp bracket's tabs inside the glass shade and ensure it stays securely fixed.
17. Attach the chain.

5. OPERATION

Pull from the chain to turn the fan on and off.

- Pull 1 time for high speed.
- Pull 2 times for medium speed.
- Pull 3 times for low speed.
- Pull 4 times to turn OFF.

The direction switch controls airflow.

- Winter function: press the direction switch up. Blades will move around warm air stuck on the top part of the room.
- Summer function: press the direction switch down. Blades will generate breeze and air will circulate.

WARNING: before using the direction switch, turn off the fan in order to prevent accidents and damage to the motor. Once it is turned OFF, press UP or DOWN to adjust airflow.

6. CLEANING AND MAINTENANCE

MAINTENANCE

HOW TO REPLACE A LIGHT BULB

1. Turn the device off (preferably, turn it off at the power circuit breaker) and wait until it cools down. (Be careful: light bulbs can get very hot during their use).
2. Remove the bulb by holding it firmly and turning it anti-clockwise.
3. Take a new bulb and put it carefully into its holder. Screw it clockwise.
4. Turn the power supply on again and switch on.

NOTE:

ForceSilence Aero 350 and 360 both require 1 x E27 bulb, 60 W (not included).

ForceSilence Aero 450 requires 1 x E14 bulb, 60 W (not included).

ForceSilence Aero 540 requires 2 x E27 bulbs, 40 W (not included).

CLEANING

Clean with a soft, dry cloth. Never use scouring pads, abrasive or chemical cleaners. Do not allow condensation to come in contact with the electrical components.

7. TECHNICAL SPECIFICATIONS

Model: ForceSilence Aero 350/360/450/540

Product reference: 05270/05245/05271/05274

Rated power: 50/50/50/60 W

Rated voltage and rated frequency: 230 V ~ 50 Hz

Made in China | Designed in Spain

8. DISPOSAL OF OLD ELECTRICAL APPLIANCES



The European directive 2012/19/EU on Waste Electrical and Electronic Equipment (WEEE), specifies that old household electrical appliances must not be disposed of with the normal unsorted municipal waste. Old appliances must be collected separately, in order to optimize the recovery and recycling of the materials they contain, and reduce the impact on human health and the environment.

The crossed out "wheeled bin" symbol on the product reminds you of your obligation to dispose of the appliance correctly. If the product has a built-in battery or uses batteries, they should be removed from the appliance and disposed of appropriately.

Consumers must contact their local authorities or retailer for information concerning the correct disposal of old appliances and/or their batteries.

9. TECHNICAL SUPPORT SERVICE

This product is under warranty for 2 years from the date of purchase, as long as the proof of purchase is submitted, the product is in perfect physical condition, and it has been given proper use, as explained in this instruction manual.

The warranty will not cover the following situations:

- The product has been used for purposes other than those intended for it, misused, beaten, exposed to moisture, immersed in liquid or corrosive substances, as well as any other fault attributable to the customer.
- The product has been disassembled, modified, or repaired by persons, not authorised by the official Technical Support Service of Cecotec.
- Faults deriving from the normal wear and tear of its parts, due to use.
- The warranty service covers every manufacturing defects of your appliance for 2 years, based on current legislation, except consumable parts. In the event of misuse, the warranty will not apply.

If at any moment you detect any problem with your product or have any doubt, do not hesitate to contact Cecotec Technical Support Service at +34 963 21 07 28.



www.cecotec.es

Grupo Cecotec Innovaciones S. L.
C/de la Pinadeta s/n, 46930
Quart de Poblet, Valencia, Spain