

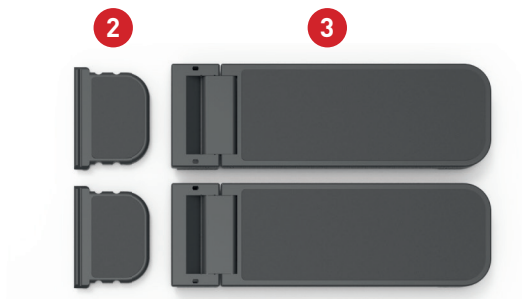
# RollerMouse Pro3

## User Guide



## Box Contents

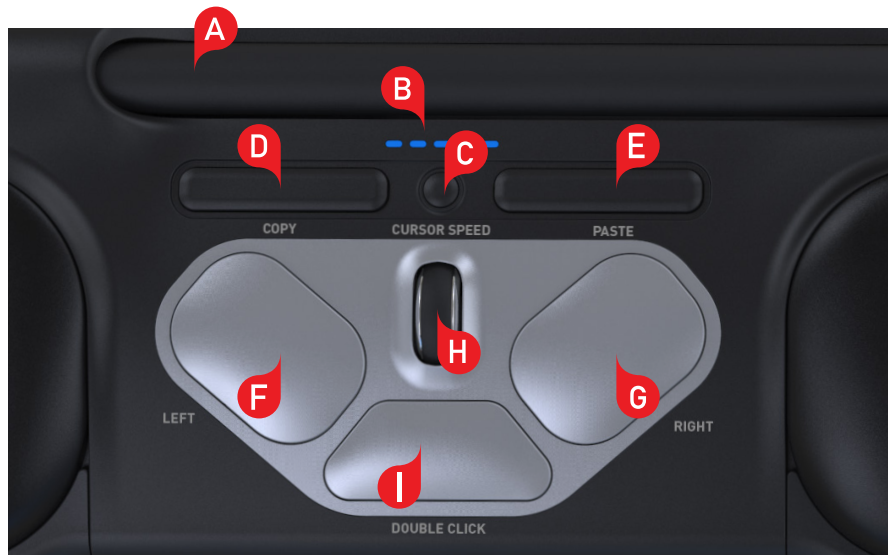
1. RollerMouse Pro3
2. Two short keyboard risers
3. Two long keyboard risers



## RollerMouse Functions

- A. Rollerbar
- B. Cursor speed LED
- C. Cursor speed adjustment
- D. Copy
- E. Paste
- F. Left-click
- G. Right-click
- H. Scroll wheel
- I. "One Touch" double-click

For additional mouse features and specific Mac settings, please download our driver at <http://support.contourdesign.com>



## Keyboard Positioning

Before plugging in the unit, take a moment to check the height and angle of your keyboard, and find the arrangement that's most comfortable for you. Use the risers to achieve the correct angle and height regardless of the type of keyboard you are using. The spacebar on your keyboard should come just above your rollerbar. To achieve a proper ergonomic position, the front edge of the keyboard should be as close as possible to the rollerbar.

Balance Keyboard is designed specifically for the RollerMouse. The keyboard sits level with the rollerbar and can be easily adjusted to a positive, neutral, or negative tilt.



Positive Tilt



Negative Tilt



Neutral Tilt

## Inserting the Keyboard Risers

Fit the end of the riser **2** into the slot on the back of the RollerMouse Pro3.



## Adjusting Risers

Line up the short and long risers **2** and **3** then press the two parts together until you hear them snap into place.



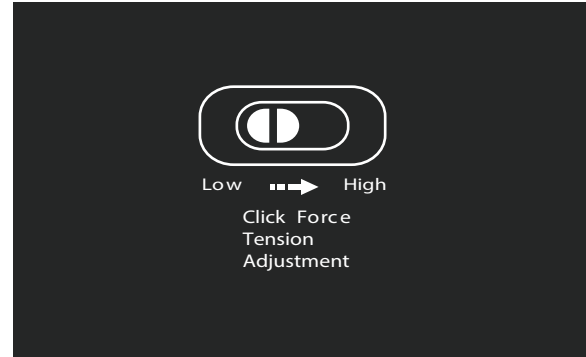
## Connecting to a computer

Plug the RollerMouse Pro3 USB cable into the computer's USB port. Allow your computer a few seconds to automatically install.



## Click Force Tension Adjustment

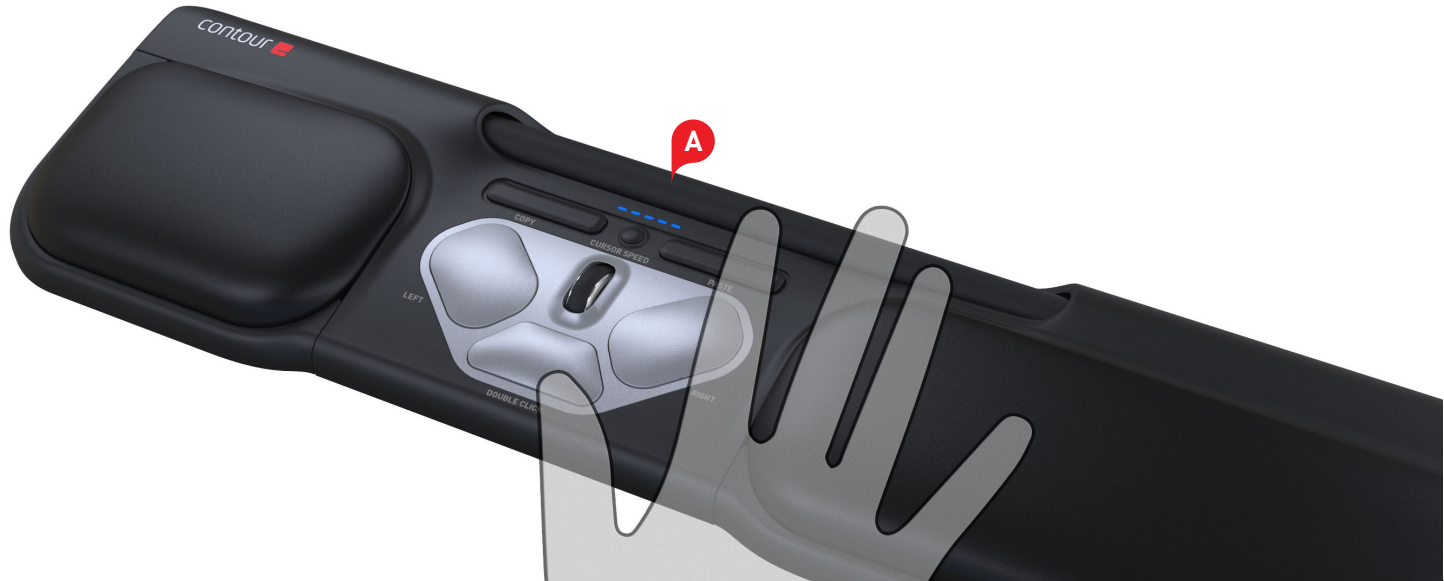
For optimal control, you can adjust the amount of pressure required to perform a mouse click. Use the click force tension slider located under your RollerMouse Pro3. Simply slide it until you find the click control that works best for you.



## Using the rollerbar

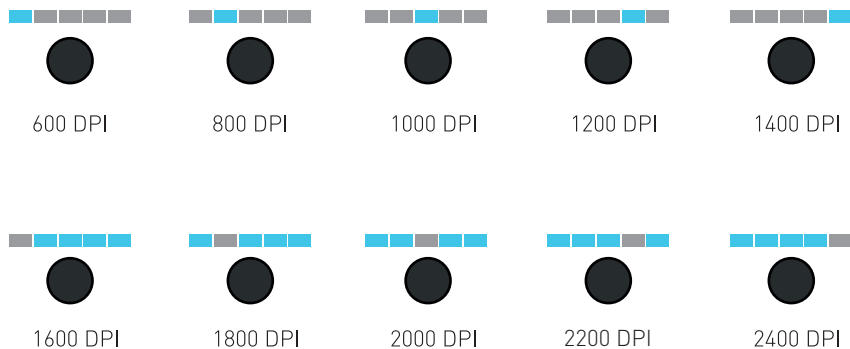
The rollerbar **A** provides two functions:

- Pressing down on the rollerbar performs a left click.
- Moving the rollerbar from side to side and up and down performs cursor movement.



## Change cursor speed

Press the Cursor Speed button **C** to cycle through cursor speeds. There are ten speed selections which range from slow (600 DPI) to fast (2400 DPI). Speed can be identified by the LED lights as shown.

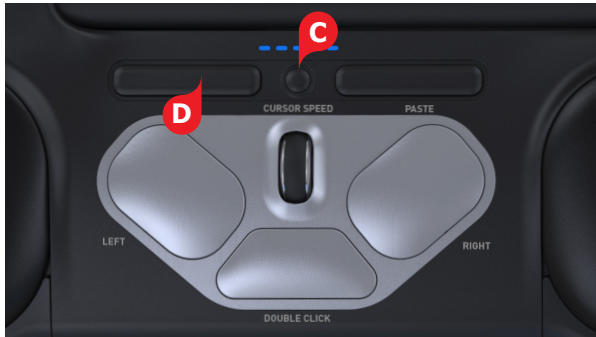




## User settings

RollerMouse Pro3 has 3 modes. PC-mode, Mac-mode and Linux (HID-mode). The default setting on your RollerMouse, is PC-Mode. Use the following key commands to switch settings to best fit your operating system.

- Press and hold the **C** and **D** buttons simultaneously for two seconds to see the LED lights flash for the respective mode.
- While holding the **C** button, release the **D** button and click on the **D** button to toggle through the different modes.
- Release both buttons once the desired mode has been reached.



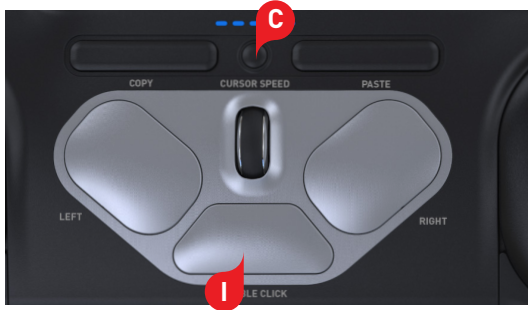
## Different Mode Settings

PC-Mode	MAC-Mode	Linux (HID)
LED's light up from left to right	LED's light up from right to left	LED's light up from both sides towards the middle

For illustrated information on these modes please visit [support.contourdesign.com](http://support.contourdesign.com)

## Changing the 'Double click' button to 'Middle' function

To change double click button **I** to function as a middle click, hold buttons **C** and **I** for two seconds until LED lights flash to confirm. Repeating this process will revert back to double click functionality.



For more information please visit:  
[www.contourdesign.com](http://www.contourdesign.com)

Contour Design, Inc.  
10 Industrial Drive  
Windham, New Hampshire 03087, USA  
Phone: (603) 893-4556  
Email: [ergoinfo@contourdesign.com](mailto:ergoinfo@contourdesign.com)

Contour Design Nordic A/S  
International House  
Center Boulevard 5  
2300 Copenhagen S. Denmark  
Phone: +45 32 46 11 20  
Email: [info@contour-design.com](mailto:info@contour-design.com)

Kingsbury House  
468 Church Lane  
London, NW9 8UA, United Kingdom  
Phone: +45 70 27 02 27  
Email: [info@contour-design.com](mailto:info@contour-design.com)

Tested to comply with FCC  
and IC standards



#### **FCC Statement**

Changes or modifications not expressly approved by the party responsible for compliance could void the user's authority to operate the equipment.

This equipment has been tested and found to comply with the limits for a Class B digital device, pursuant to Part 15 of the FCC Rules. These limits are designed to provide reasonable protection against harmful interference in a residential installation. This equipment generates uses and can radiate radio frequency energy and, if not installed and used in accordance with the instructions, may cause harmful interference to radio communications. However, there is no guarantee that interference will not occur in a particular installation. If this equipment does cause harmful interference to radio or television reception, which can be determined by turning the equipment off and on, the user is encouraged to try to correct the interference by one or more of the following measures:

- Reorient or relocate the receiving antenna.
- Increase the separation between the equipment and receiver.
- Connect the equipment into an outlet on a circuit different from that to which the receiver is connected.
- Consult the dealer or an experienced radio/TV technician for help.

This device complies with part 15 of the FCC rules. Operation is subject to the following two conditions (1) this device may not cause harmful interference, and (2) this device must accept any interference received, including interference that may cause undesired operation.

#### **IC Statement**

This device complies with Industry Canada's licence-exempt RSSs. Operation is subject to the following two conditions:

- (1) This device may not cause interference; and
- (2) This device must accept any interference, including interference that may cause undesired operation of the device.

The term "IC:" before the certification/registration number only signifies that the Industry Canada technical specifications were met. This product meets the applicable Industry Canada technical specifications.

Le présent appareil est conforme aux CNR d'Industrie Canada applicables aux appareils radio exempts de licence. L'exploitation est autorisée aux deux conditions suivantes : (1) l'appareil ne doit pas produire de brouillage, et (2) l'utilisateur de l'appareil doit accepter tout brouillage radioélectrique subi, même si le brouillage est susceptible d'en compromettre le fonctionnement

#### **Warranty**

If there is a functional defect due to faulty manufacturing, we will replace the product. This warranty does not cover damage that results from misuse of the product.

#### **Attention!**

If you attempt to dismantle your RollerMouse, you will invalidate your warranty.

contour 