

# DENON®

## DCD-600NE

COMPACT DISC PLAYER

# Quick Start Guide

Kurzanleitung / Guide de démarrage rapide / Guida di Avvio Rapido /  
Guía de inicio rápido / Snelhandleiding / Snabbstartsguide /  
Краткое руководство пользователя / Skrócona instrukcja obsługi

## Read Me First....

Bitte zuerst lesen... / Lisez-moi en premier... / Nota preliminare... /  
Lea esto primero... / Lees mij eerst... / Läs detta först... /  
Прочитайте в первую очередь... / Przeczytaj to najpierw....

ENGLISH

DEUTSCH

FRANÇAIS

ITALIANO

ESPAÑOL

NEDERLANDS

SVENSKA

РУССКИЙ

POLSKI

# Welcome

Thank you for choosing a Denon CD player. This guide provides step-by-step instructions for setting up your CD player.

**Please do not return this unit to the store – call for assistance.**









## If you need help... :

If you need additional help in solving problems, contact Denon customer service in your area.

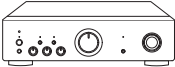
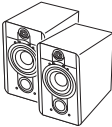

For details, see the Denon homepage. [www.denon.com](http://www.denon.com)

# Before You Begin

## What's In the Box

Quick Start Guide 	CD player 
CD-ROM (Owner's Manual) 	Remote control unit (RC-1234) 
Safety Instructions 	R03/AAA batteries 
Cautions on Using Batteries 	Audio cable 

## Required for Basic connections

 Amplifier	 Speaker systems	 Speaker cables
---	--	---



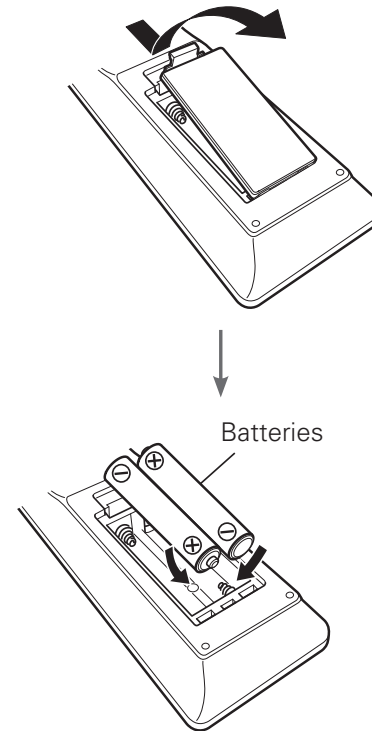
- These drawings are for illustrative purposes only and may not represent the actual product(s).

# Setup

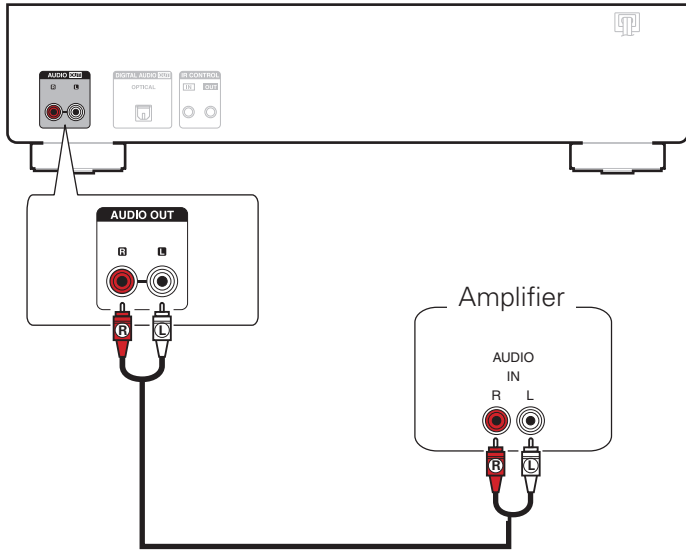
There are four steps to the setup process.

- 1** Install batteries in the remote control unit
- 2** Connect the CD player to the amplifier
- 3** Plug the power cord into a power outlet
- 4** Begin CD playback

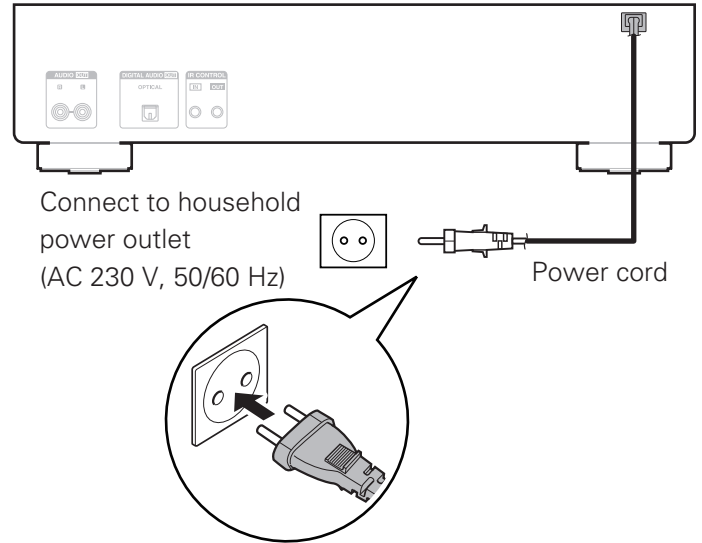
## **1** Install batteries in the remote control unit



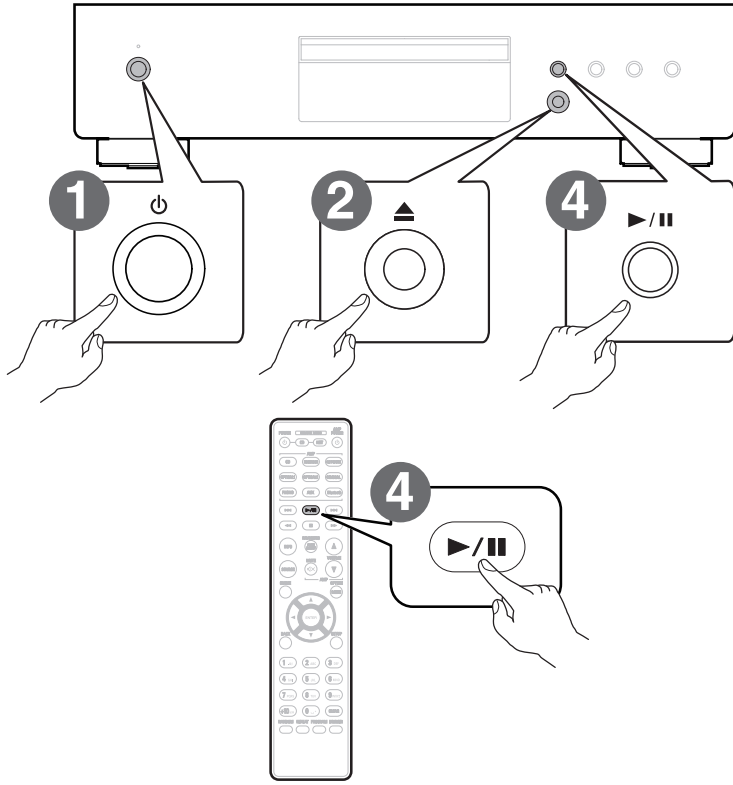
## 2 Connect the CD player to the amplifier






## 3 Plug the power cord into a power outlet



## 4 Begin CD playback



- 1 Press .
- 2 Press  to open the disc tray.
- 3 Place CD in the disc tray.
- 4 Press . Playback starts.

# Owner's Manual

Please reference to the Owner's Manual for more details about the setup and operation of the CD player and its features.

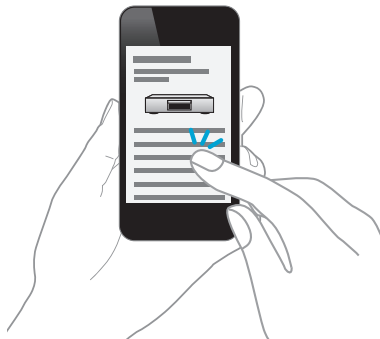
## ❑ Online Version

Enter the following URL into your web browser:

**[manuals.denon.com/DCD600NE/EU/EN/](http://manuals.denon.com/DCD600NE/EU/EN/)**



Online Manual

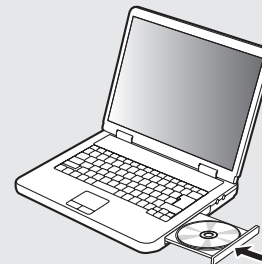


## ❑ Printable Version

Access the print version of the owner's manual from the included CD-ROM or select the "PDF Download" link from the Online Version.

**1**

**Insert the disc into your PC.**



**2**

**Follow the screen or double click on the PDF file.**

**DENON®**

[www.denon.com](http://www.denon.com)

Printed in Vietnam 5411 11759 00AD  
Copyright © 2019 D&M Holdings Inc. All Rights Reserved.