



EW-7611UCB

Quick Installation Guide

04-2018 / v1.0

Edimax Technology Co., Ltd.

No. 278, Xinhu 1st Rd., Neihu Dist., Taipei City, Taiwan

Email: support@edimax.com.tw

Edimax Technology Europe B.V.

Fijenhof 2, 5652 AE Eindhoven, The Netherlands

Email: support@edimax.nl

Edimax Computer Company

3350 Scott Blvd., Bldg.15 Santa Clara, CA 95054, USA

Live Tech Support: 1(800) 652-6776

Email: support@edimax.com

Content

I	Product Information	1
I-1	Package Content.....	1
I-2	LED Indicator	1
I-3	System Requirements	1
I-4	Safety Information	2
II	Installation.....	3
III	Windows.....	4
III-1	Driver Installation / CD Information	4
III-2	Driver Uninstallation	8
IV	Mac OS	11
IV-1	Driver Installation.....	11
IV-2	Driver Uninstallation	16
V	Disabling Network Adapters.....	17
V-1	Windows 7.....	17
V-2	Windows 8.....	18
V-3	Windows 10.....	19
V-4	Mac.....	20
VI	Using the Adapter	21
VI-1	Windows – Wi-Fi	21
VI-2	Windows – Bluetooth.....	23
VI-3	Mac – Wi-Fi.....	27
VI-4	WPS	28

Mehrsprachige Schnellanleitung auf CD

Čeština: Českého průvodce rychlou instalací naleznete na přiloženém CD s ovladači

Deutsch: Die deutsche Schnellanleitung befindet sich auf der Treiber-CD

Español: Incluido en el CD el G.R.I. en Español.

Français: Veuillez trouver l'français G.I.R ci-joint dans le CD

Italiano: Incluso nel CD il Q.I.G. in Italiano.

Ungarisch: A magyar telepítési útmutató megtalálható a mellékelt CD-n

Nederlands: De nederlandse Q.I.G. treft u aan op de bijgesloten CD

Polski: Skrócona instrukcja instalacji w języku polskim znajduje się na załączonej płycie CD

Português: Incluído no CD o G.I.R. em Portugues

Русский: Найдите Q.I.G. на русском языке на приложенном CD

Türkisch: Ürün ile beraber gelen CD içinde Türkçe Hızlı Kurulum Kılavuzu'nu bulabilirsiniz

Українська: Для швидкого налаштування Вашого пристрою, будь ласка, ознайомтесь з інструкцією на CD

I Product Information

I-1 Package Content



EW7611UCB



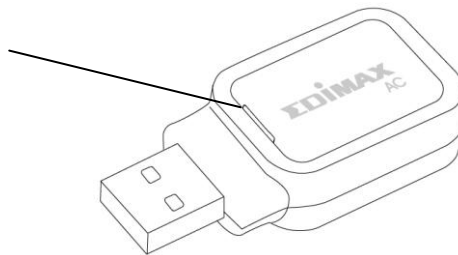
Quick Installation Guide



CD

I-2 LED Indicator

Dual Color LED



LED Color	LED Status	Description
Blue	On	Bluetooth function ON.
	Off	Bluetooth function Off.
Green	Slow Flash	Wireless turned on, waiting to be connected.
	Quick Flash	Wireless connection established / wireless activity.



The green LED is only visible if Bluetooth feature is turned off (blue LED off).

I-3 System Requirements

- Windows 7 - 10, Mac OS X 10.9 – 10.12
- USB 2.0 Port
- Hard Disk: 100MB
- CD-ROM Drive

I-4 Safety Information

In order to ensure the safe operation of the device and its users, please read and act in accordance with the following safety instructions.

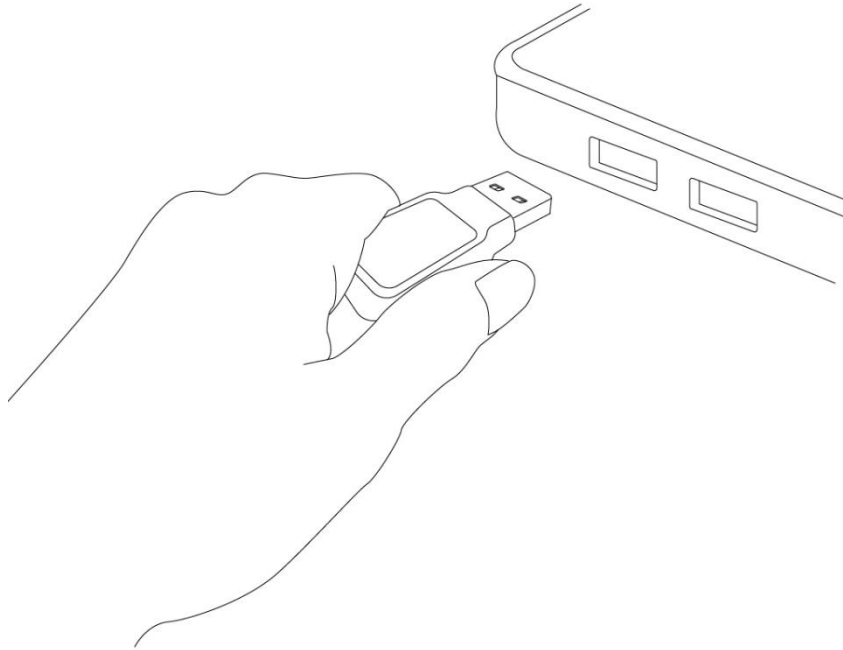
- 1.** The wireless adapter is designed for indoor use only; do not place the wireless adapter outdoors.
- 2.** Do not place the wireless adapter in or near hot/humid places, such as a kitchen or bathroom.
- 3.** The wireless adapter contains small parts which are a danger to small children under 3 years old. Please keep the wireless adapter out of reach of children.
- 4.** There are no user-serviceable parts inside the wireless adapter. If you experience problems with the wireless adapter, please contact your dealer of purchase and ask for help.
- 5.** The wireless adapter is an electrical device and as such, if it becomes wet for any reason, stop using it immediately. Contact an experienced electrical technician for further help.

II Installation

1. Switch on your computer and insert the USB adapter into an available USB port of your computer.



Never use force to insert the USB adapter.



2. Insert the included CD-ROM into the CD drive of your computer.



The setup wizard is also available for download from the Edimax website.

3. For **Windows** users the setup wizard will open. For **Mac** users the CD's "Mac" folder will open.




If the CD does not auto-run or if you downloaded the setup wizard, please browse the "Autorun" or "Mac" folder of the CD for Windows or Mac users respectively.

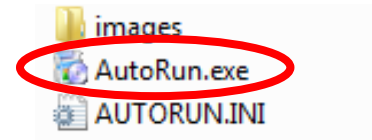
Please follow the instructions in the appropriate chapter for your operating system.

III Windows

The screenshots below were captured under Windows 10 environment.

III-1 Driver Installation / CD Information

 ***If the CD did not auto-run, please execute the “Autorun.exe” file to start the setup wizard.***

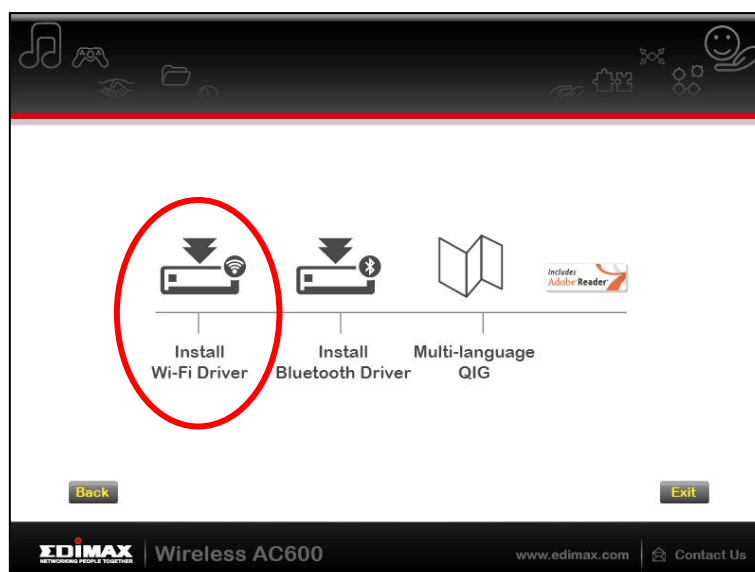


1. Click the image of the wireless USB adapter to continue.

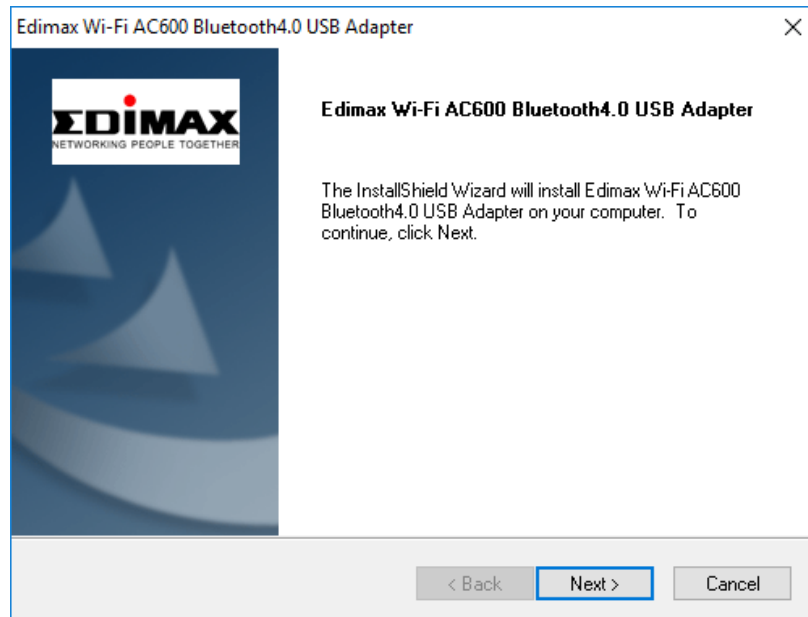


Install Wi-Fi Driver

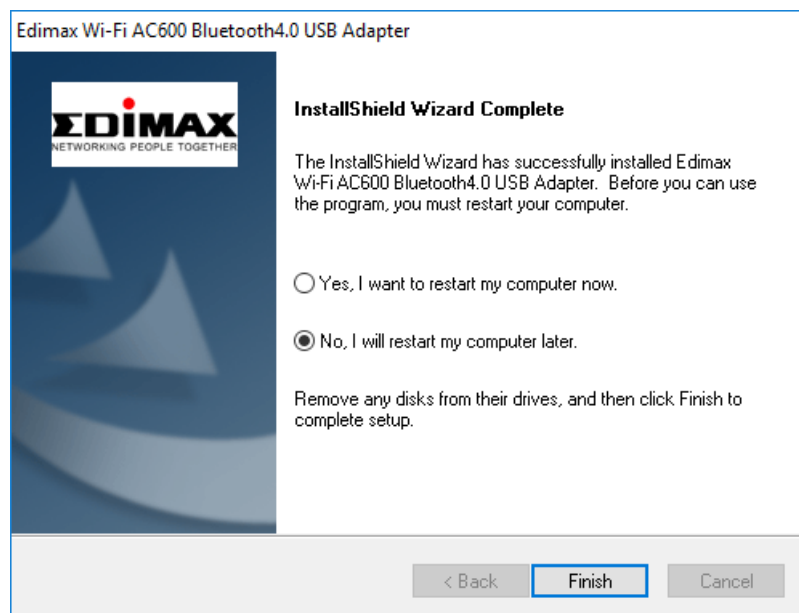
2. Click “Install Wi-Fi Driver” to install the Wi-Fi drivers.



3. Click “Next” to continue and follow the instructions on-screen until installation is complete.

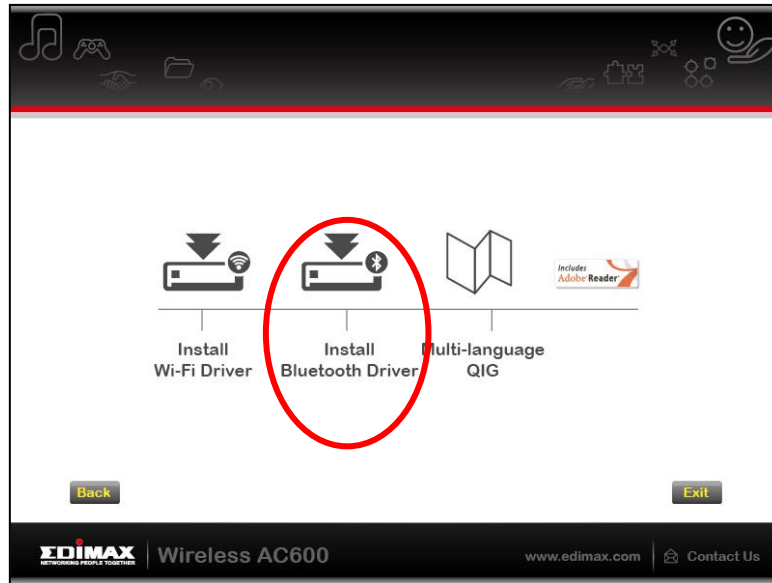


4. You need to install the Bluetooth drivers next, so select restart your computer later and click “Finish”.

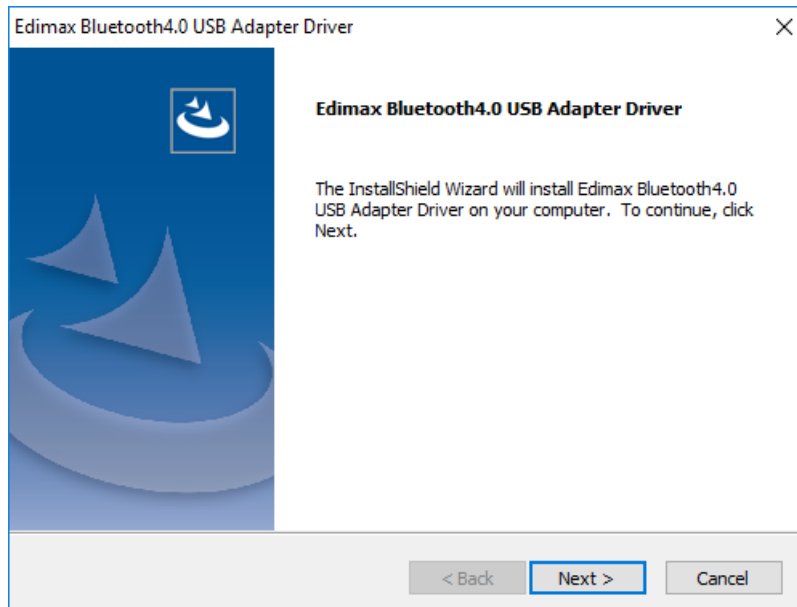


Install Bluetooth Driver

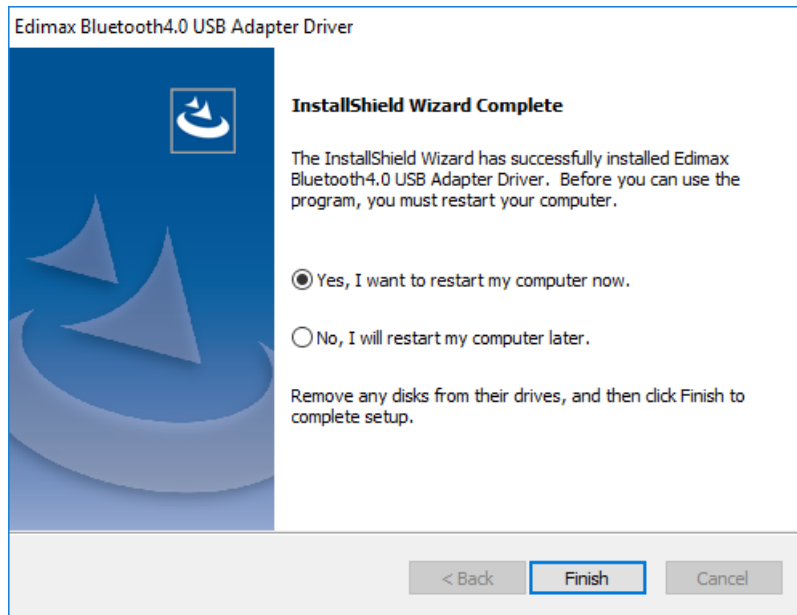
5. Click “Install Bluetooth Driver” to install the Bluetooth drivers.



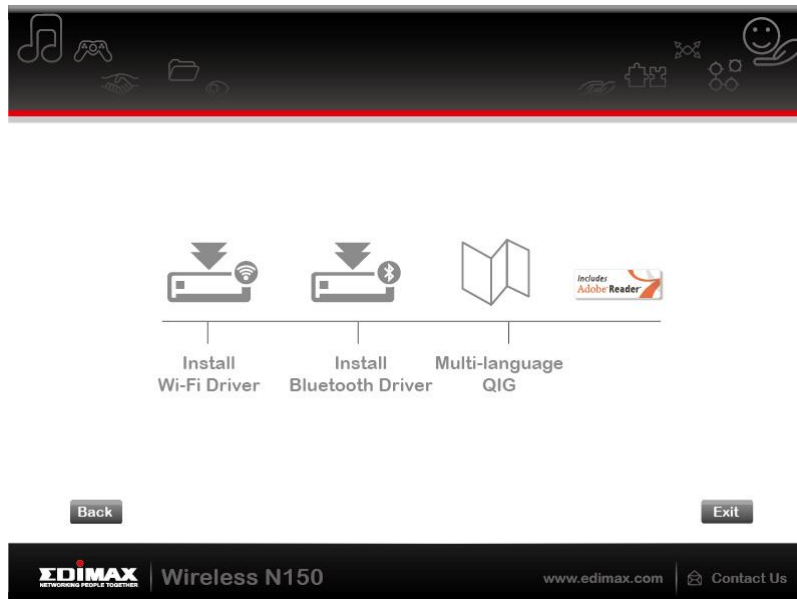
6. Click “Next” to continue and follow the instructions on-screen until installation is complete.



7. You need to restart your computer before using the adapter. Choose whether to restart now or later and click “Finish” to continue.



8. Click “Exit” to close the setup wizard.





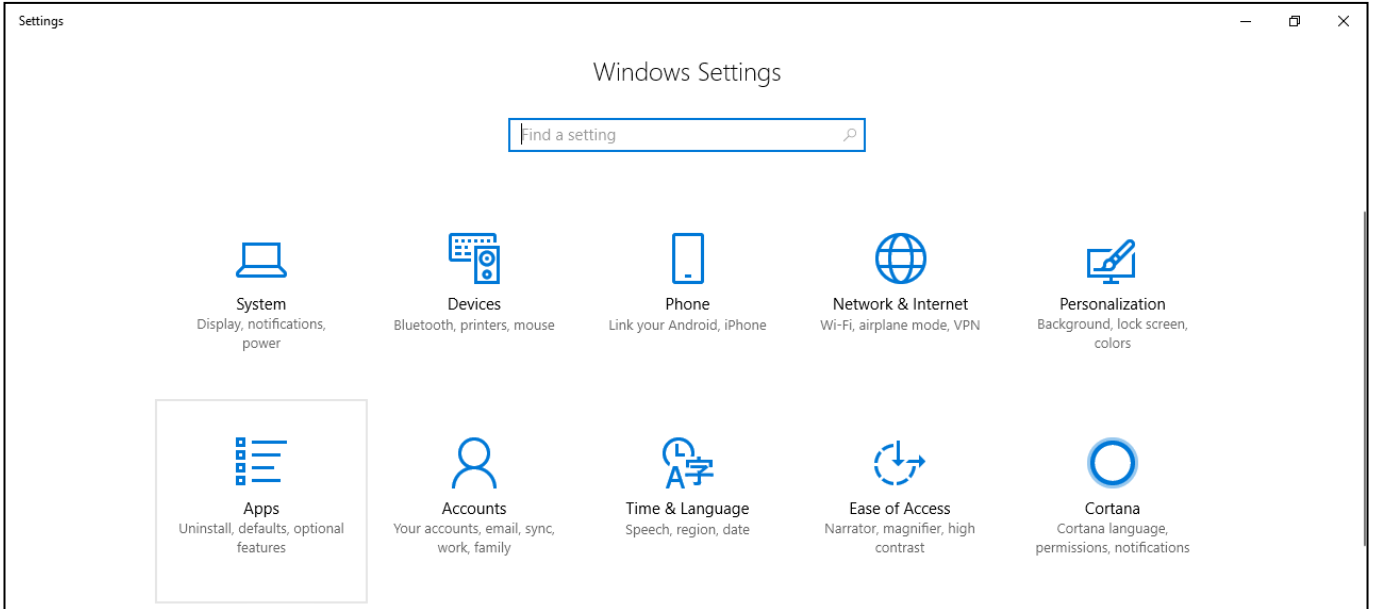
Multi-language QIG

The multi-language QIG is also included on the CD-ROM. To open it click “Multi-language QIG”.

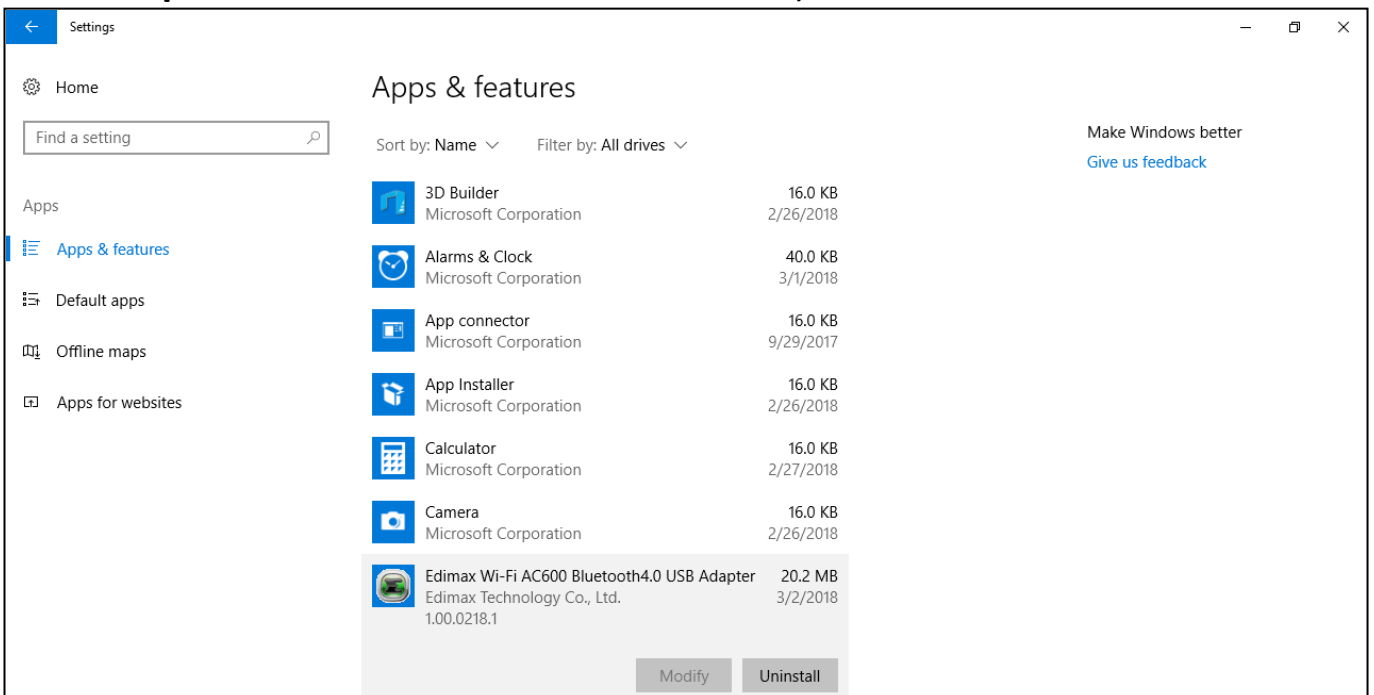
III-2 Driver Uninstallation

To uninstall drivers for your adapter, use the **Windows Control Panel** built-in **Programs and Features, Uninstall a Program** or **Add or Remove Programs** feature. An example is shown below:

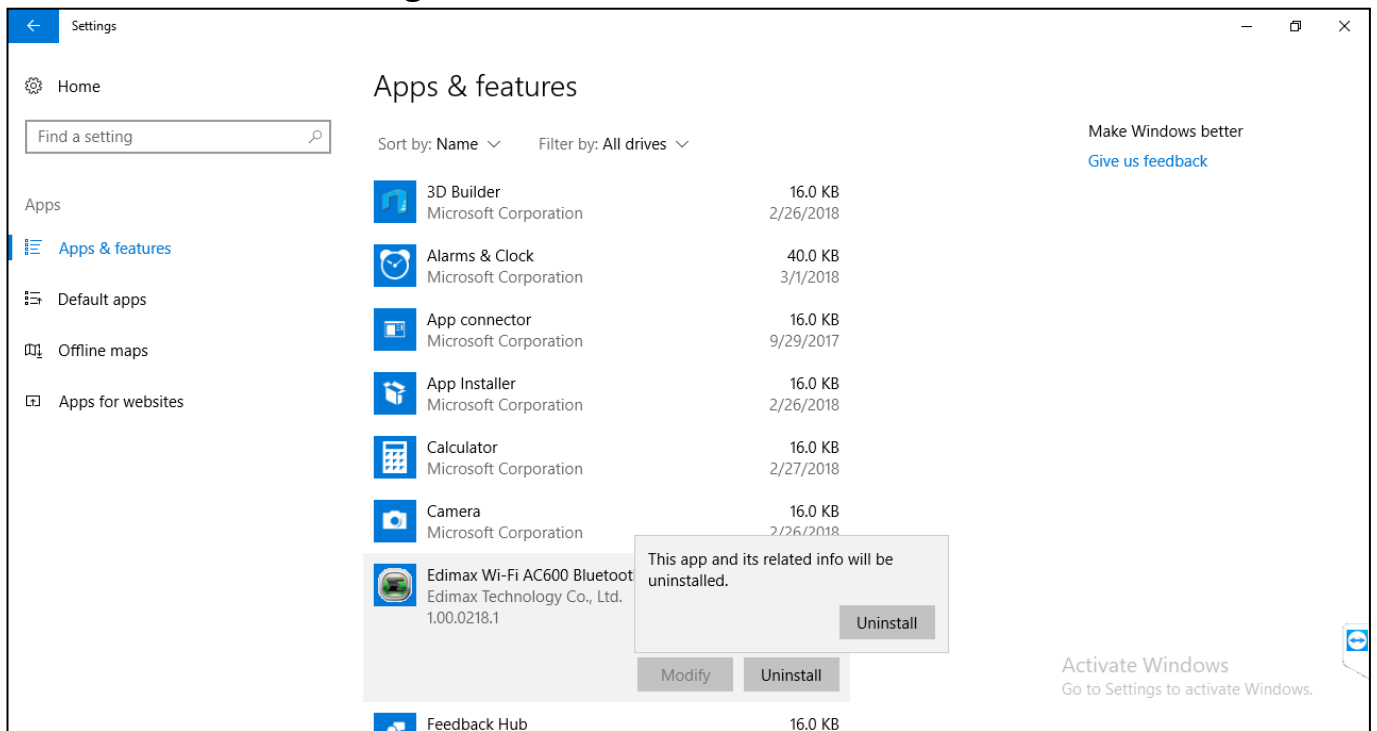
1. Go to Windows settings by clicking  followed by .



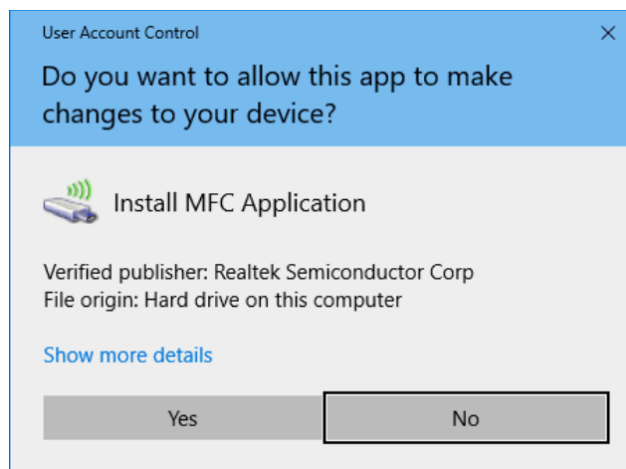
2. Click "Apps" for "Apps & Features". Scroll down to locate and select the driver you wish to remove (**Edimax Wi-Fi AC600 Bluetooth 4.0 USB Adapter, Edimax Bluetooth 4.0** or similar) and click **Uninstall**.



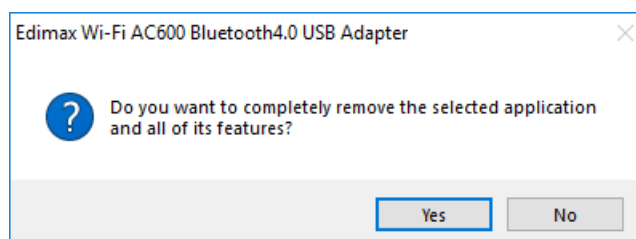
3. Click “Uninstall” again.



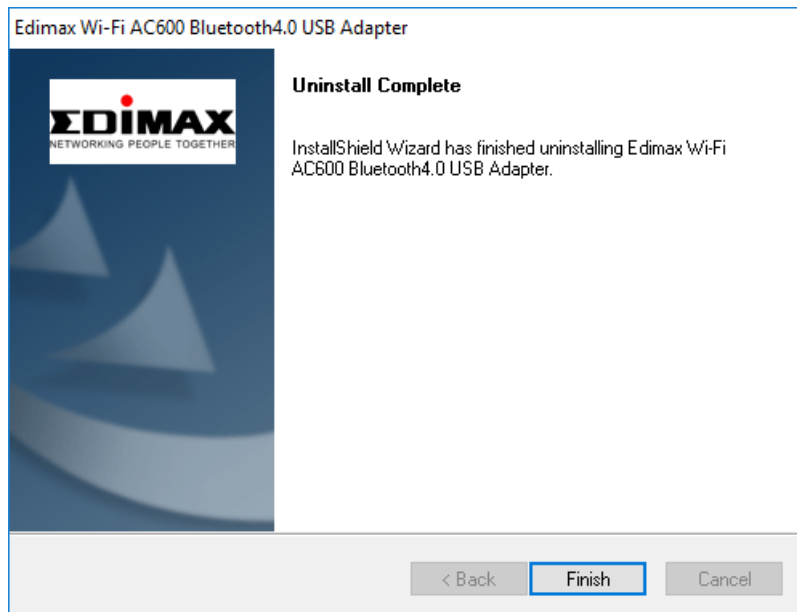
4. Windows will ask if you wish to make this change to the system, click “Yes” to continue.



5. Windows will ask you to confirm the removal, click “Yes” to continue.



The system will uninstall the driver itself.



6. Click "Finish" to complete the procedure.

IV Mac OS

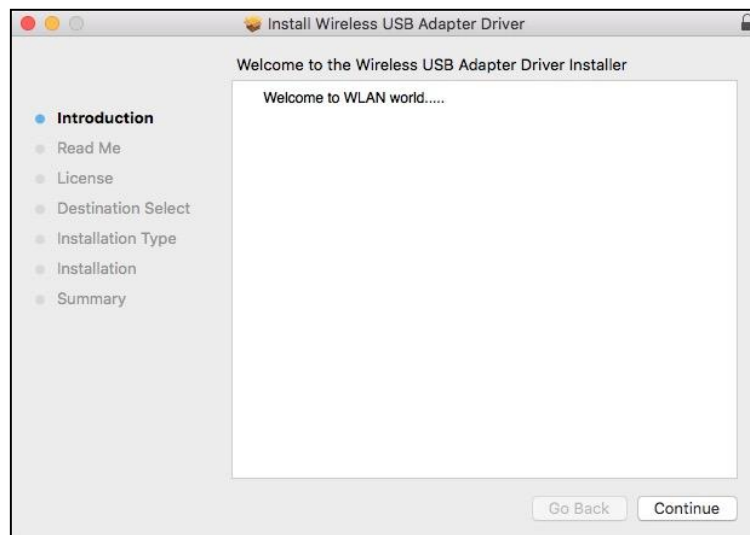
IV-1 Driver Installation

 **Bluetooth connectivity is Windows only.**

1. Open the “RTLWLANU_MacOS..” folder and double click the “Installer.pkg” file to open the driver installation wizard.



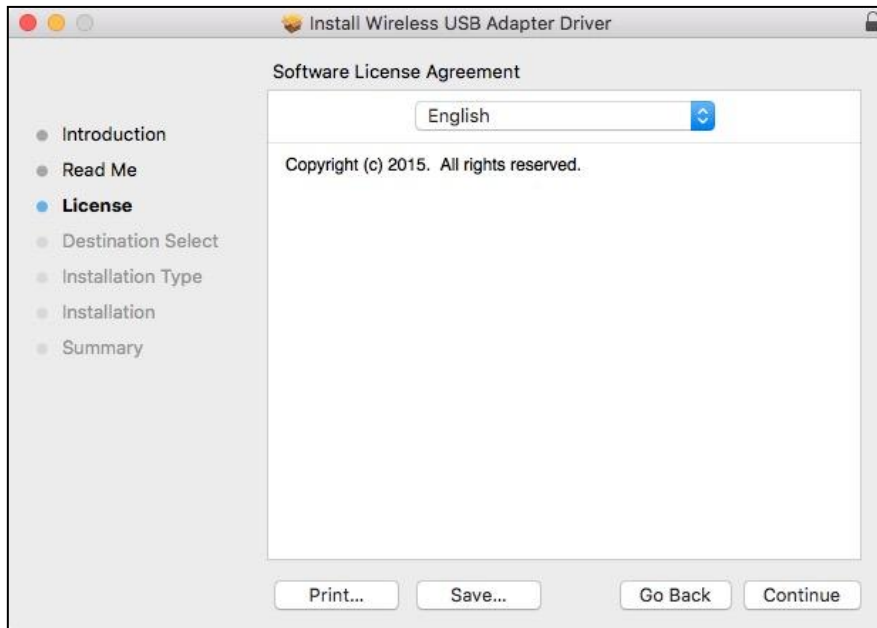
2. Click “Continue” to proceed to the next step.



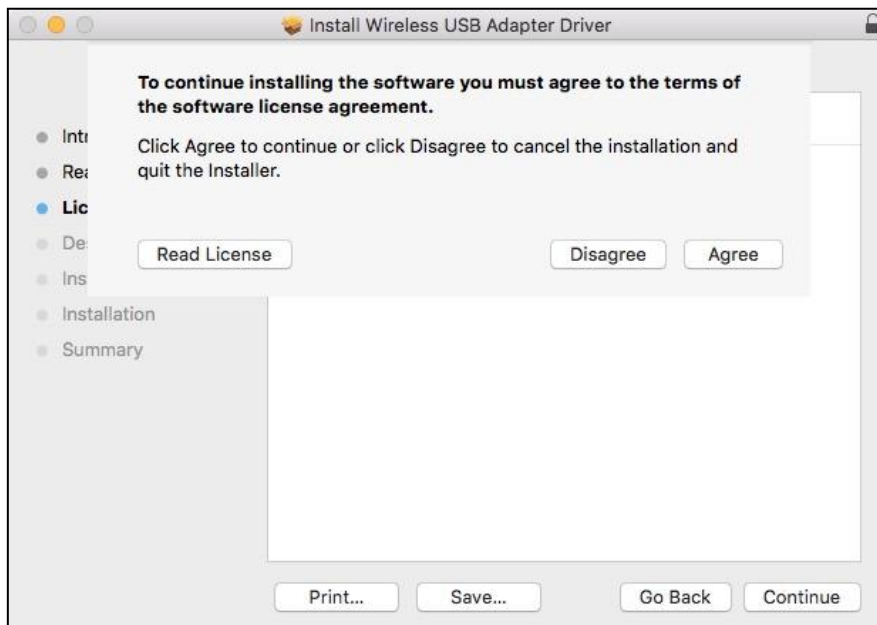
3. The next screen displays important information, please read it carefully. Click “Continue” when you are ready to continue.



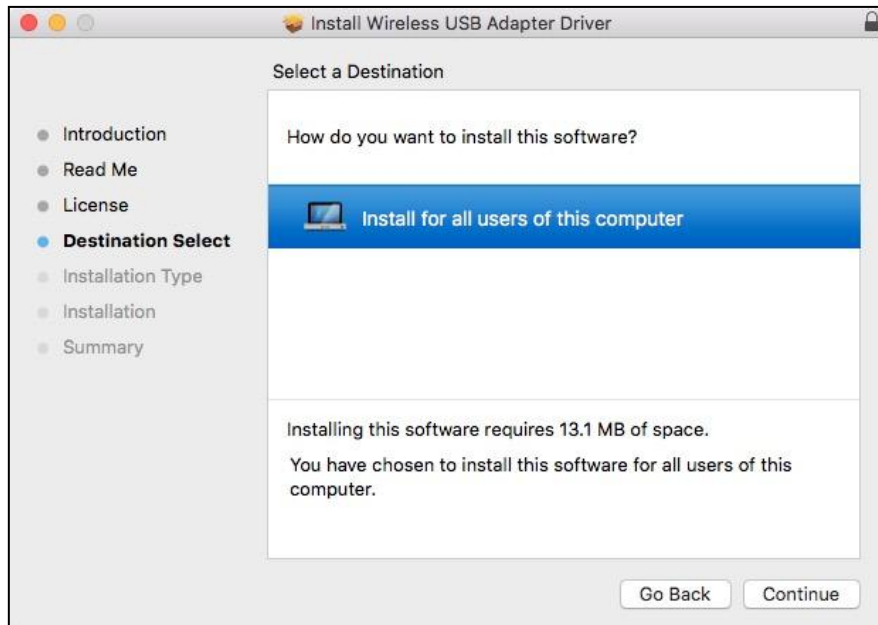
4. Select a language (the default language is English) and click “Continue” to install the driver.



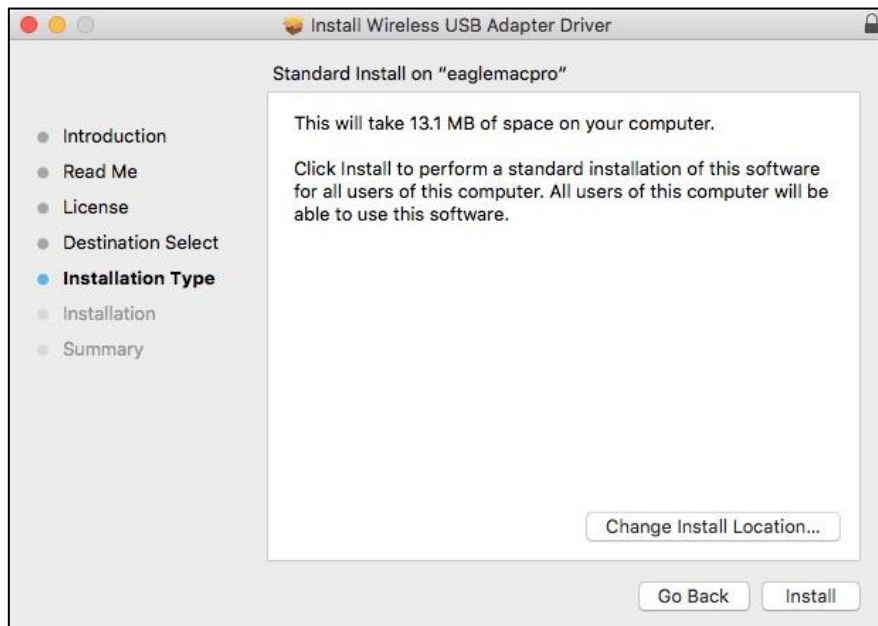
5. To read the software license click “Read License” and then click “Agree” to confirm you agree to the terms. You must agree to the terms to continue installing the software.



6. If prompted, select which user to install the software for and click “Continue”.



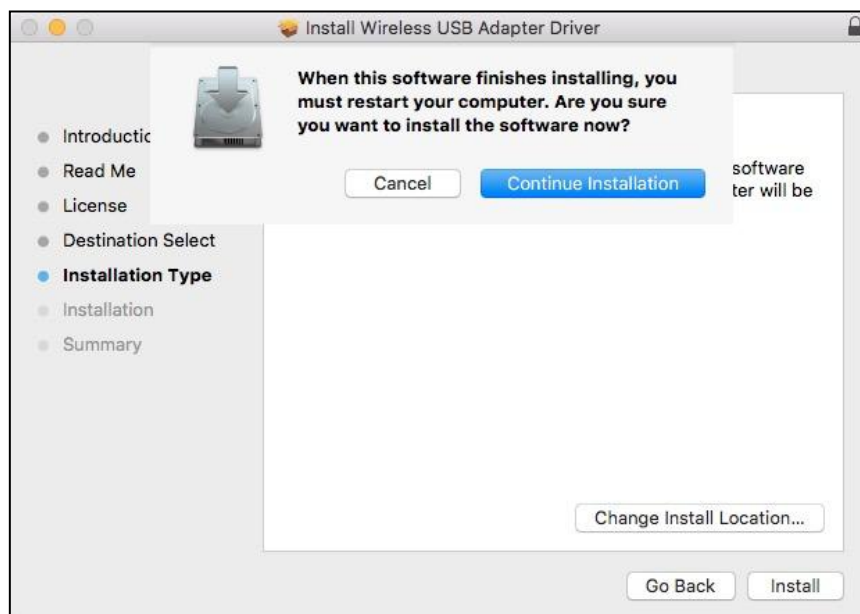
7. Click “Install” to install the driver.



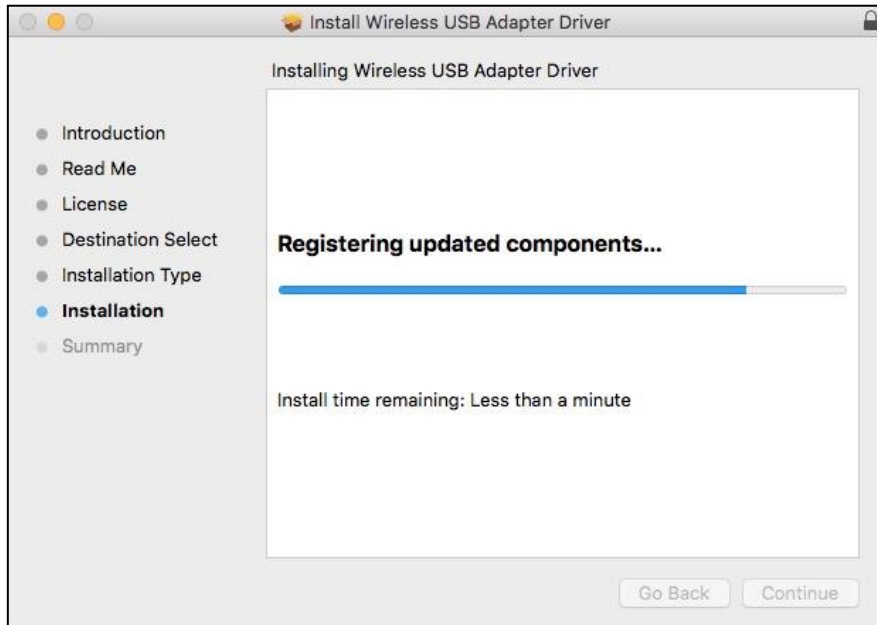
8. You may be prompted to enter your system/administrative password before the installation can begin. Enter them and click “Install Software”.



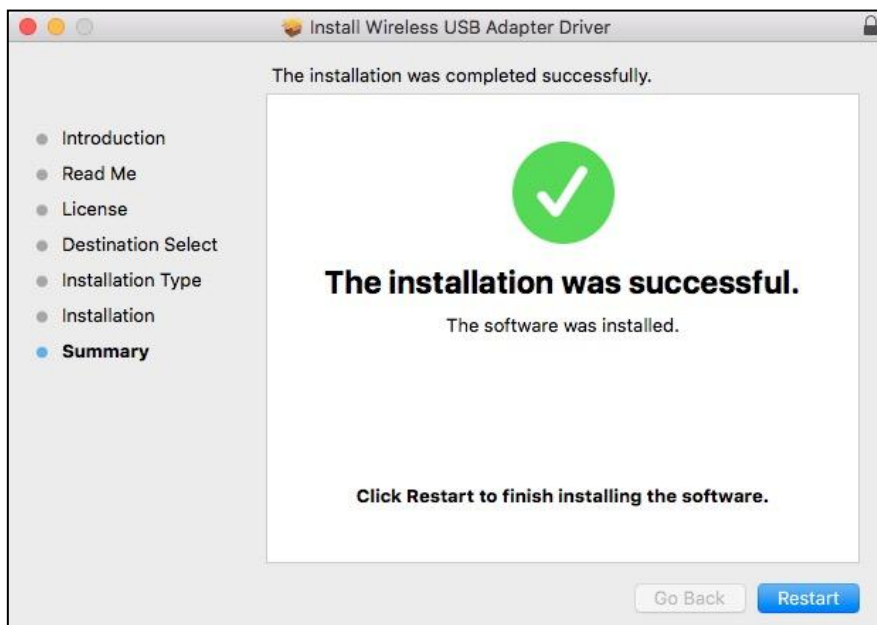
9. You will be prompted that you must restart your computer when the installation is complete. Click “Continue Installation” to proceed.



Please wait while the driver is installing.



- 10.** When the installation is complete, you will see the following screen informing you that “The installation was successful”. Click “Restart” to restart your computer.



IV-2 Driver Uninstallation

1. Open the “RTLWLANU_MacOS..” folder.



2. Double click the “Uninstall.pkg” file and follow the on-screen instructions.

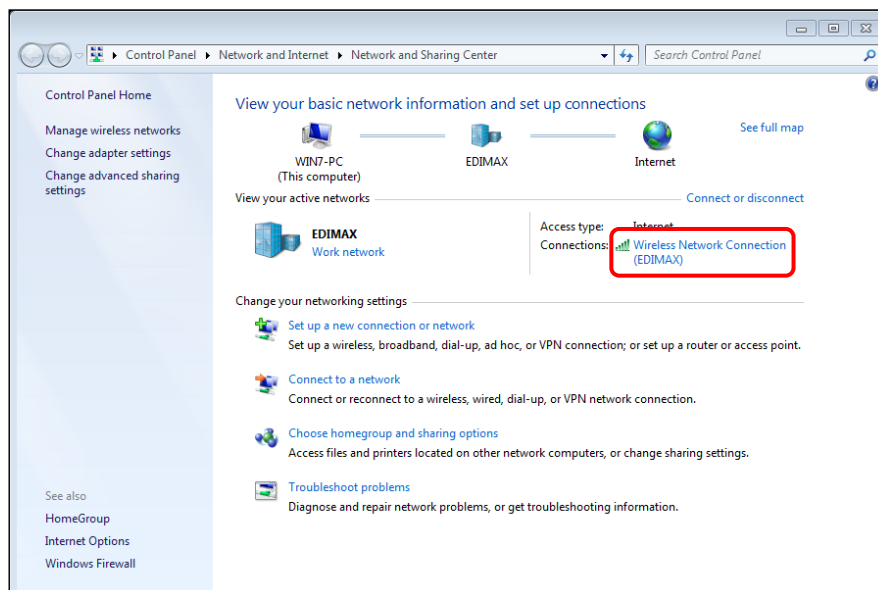


V *Disabling Network Adapters*

To ensure that your USB wireless adapter can function correctly, it is recommended that you disable any other existing wireless network and Bluetooth adapters installed on your computer. If you are unsure how to do so, you can refer to the user manual for your computer, or follow the examples below.

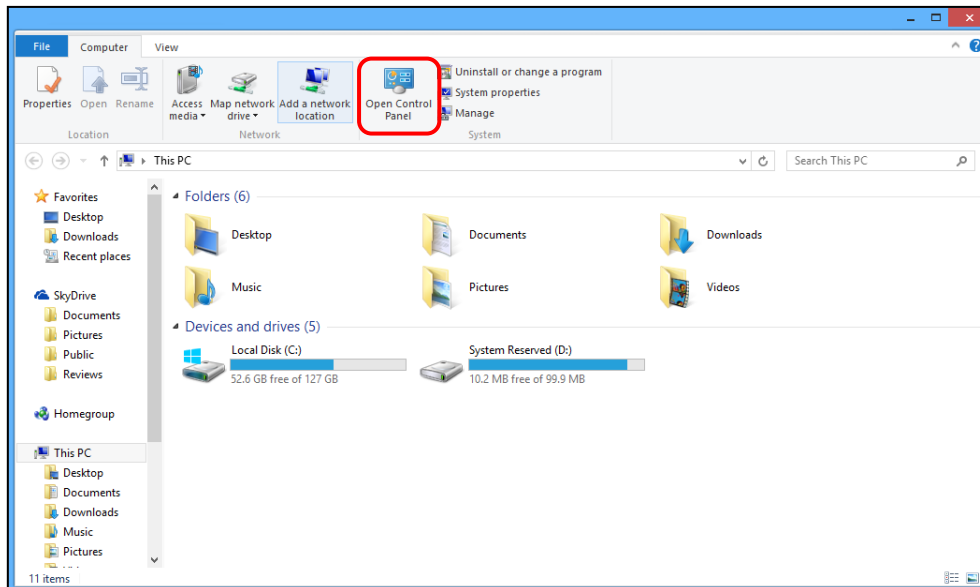
V-1 Windows 7

1. Go to **Start > Control Panel**.
2. Click **View network status and tasks**.
3. Click **Wireless Network Connection** (outlined in red below) for a properties window and click **Disable**.

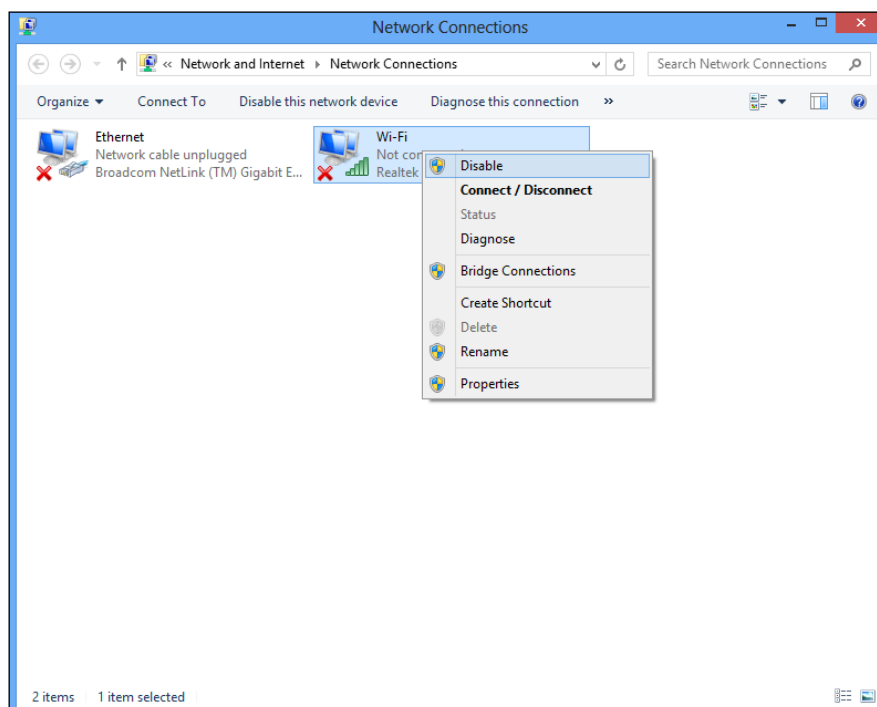


V-2 Windows 8

1. Go to desktop and open a **File Manager**.
2. Click **Computer > Open Control Panel**.

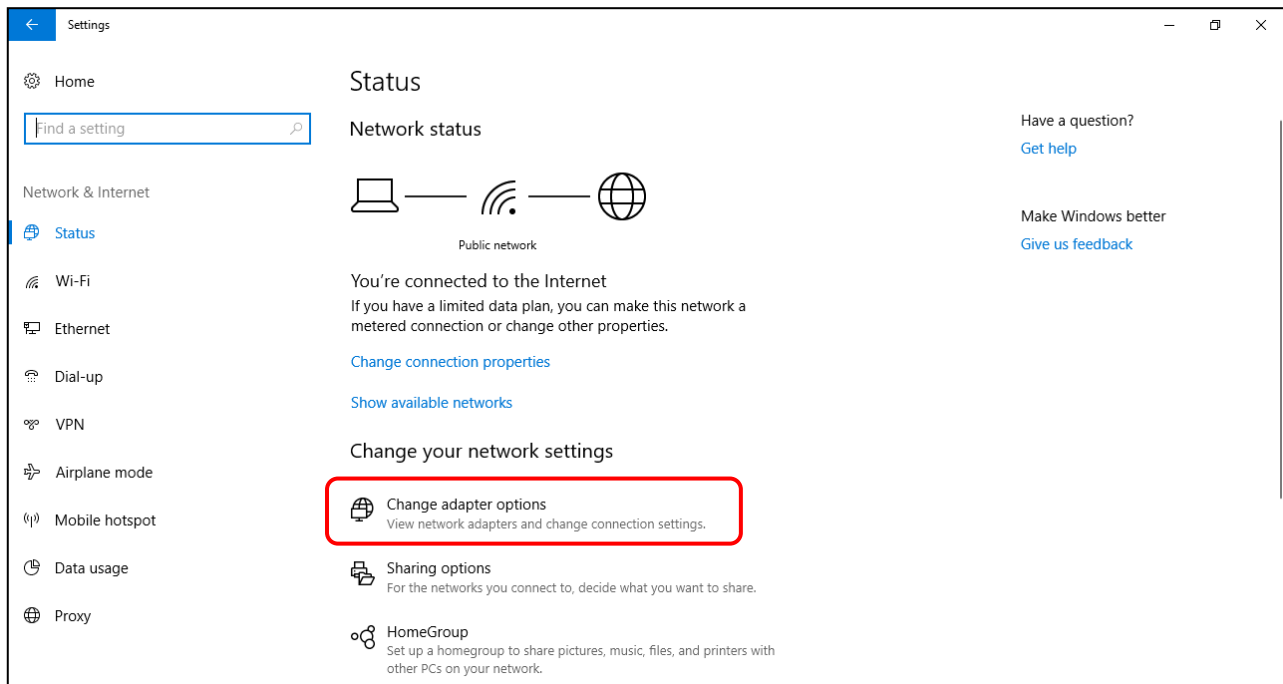


3. Click **View network status and tasks > Change adapter settings**.
4. Right-click the network connection and click **Disable**.

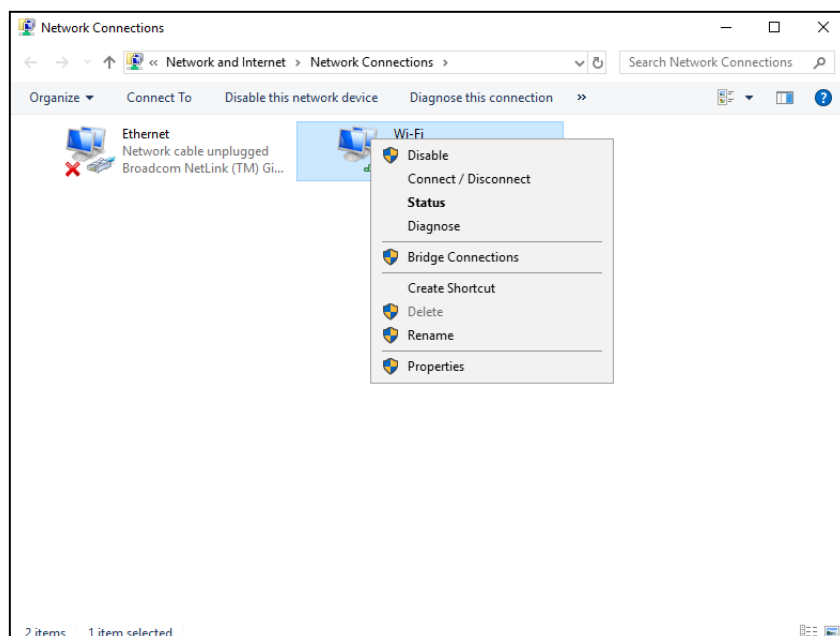


V-3 Windows 10

1. Go to **Start > Settings**.
2. Click **Network & Internet**.
3. Click **Change adapter options** (outlined in red below)



4. Right-click the network connection and click **Disable**.



V-4 Mac

1. Select **System Preferences** from the dock.



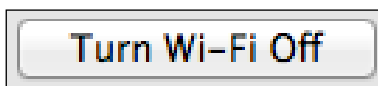
2. In **System Preferences**, select **Network**.



3. All of your network connections will be displayed, as shown below. Select "Wi-Fi" from the left panel.



4. Click "Turn Wi-Fi" off in the main panel.



VI Using the Adapter

After you have installed the driver (and, where necessary, disabled other adapters), users can connect to a Wi-Fi network or Bluetooth device (windows users only) using the adapter as you would normally do so and is demonstrated below.

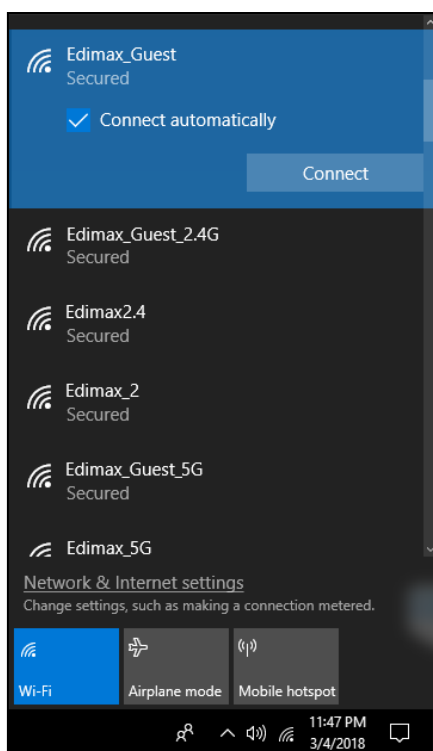
VI-1 Windows – Wi-Fi

Below is an example of how to connect using Wi-Fi - the process may vary according to your Windows edition.

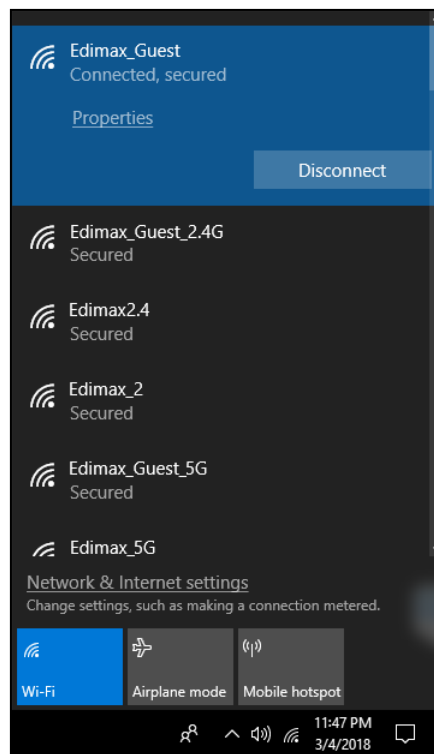
1. Locate the network icon in the system tray. The icon should look like (or similar on different editions of Windows) the icon shown below:



2. Click the network icon to display a network list. Search for the SSID of your Wi-Fi network and click **Connect**. If you set a password for your network, you will then be prompted to enter it.



3. After correctly entering your password, you will be successfully connected to your Wi-Fi network.



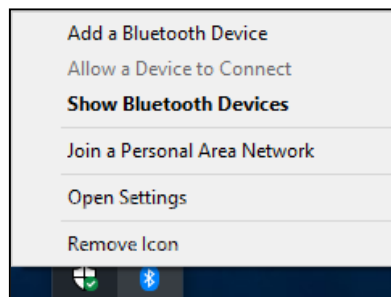
VI-2 Windows – Bluetooth

Below is an example of how to connect using Bluetooth - the process may vary according to your Windows edition.

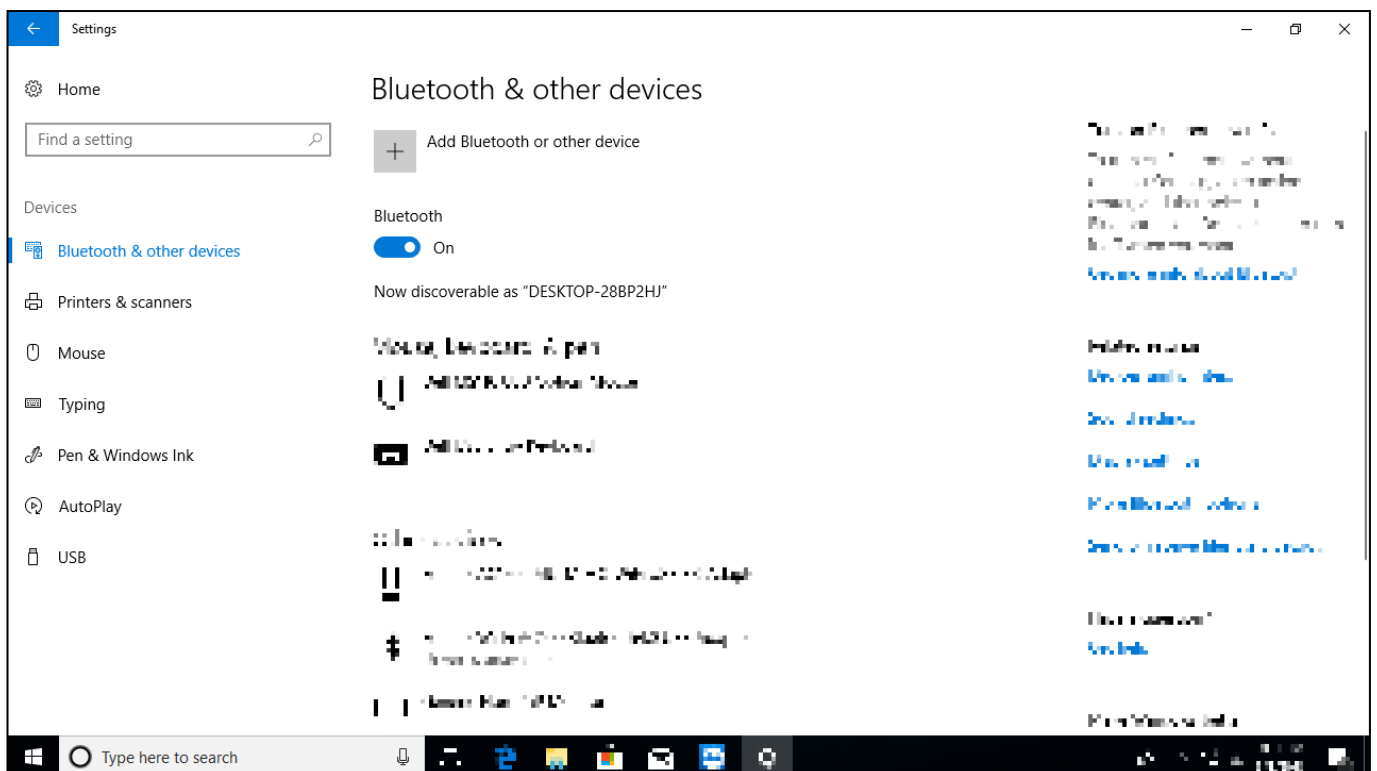
1. Locate the Bluetooth icon in the system tray. The icon should look like (or similar on different editions of Windows) the icon shown below:



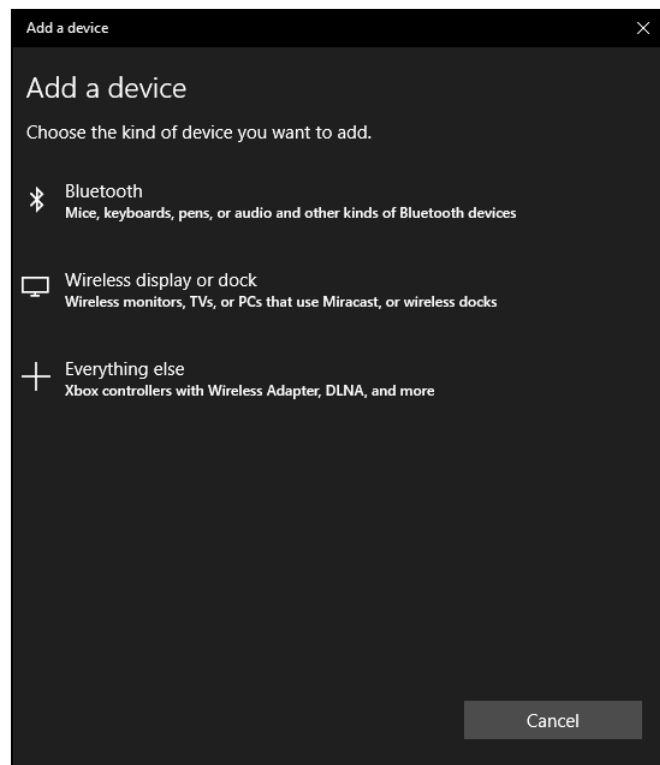
2. Right-click the icon and click “Open Settings”.



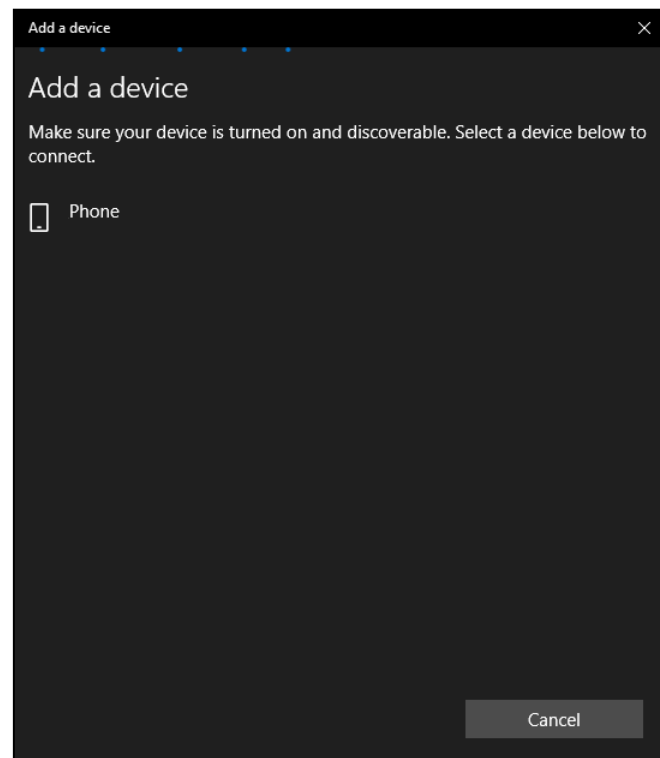
3. Please make sure the Bluetooth function is on. Click “Add Bluetooth or other device” to start Bluetooth connection.



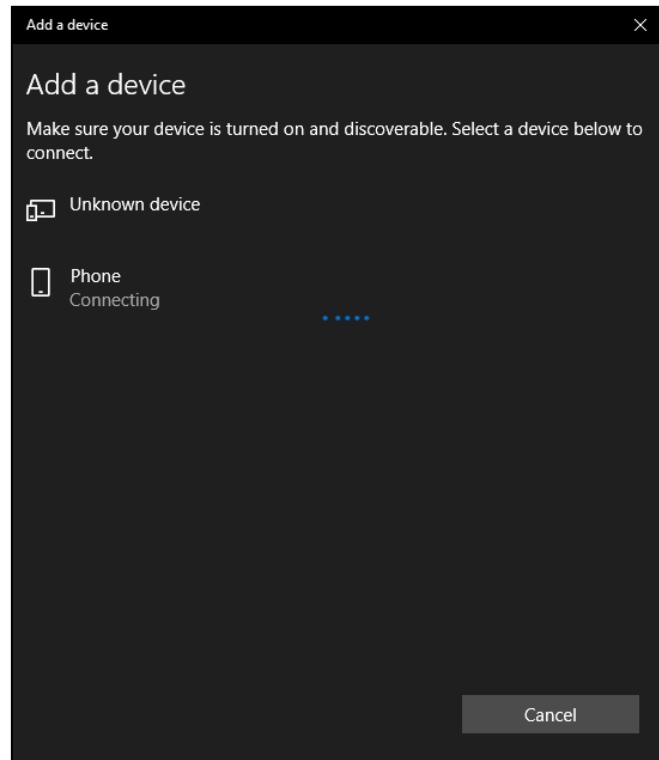
4. An “Add Device” page will be displayed as shown below. Click “Bluetooth” to add device using Bluetooth.



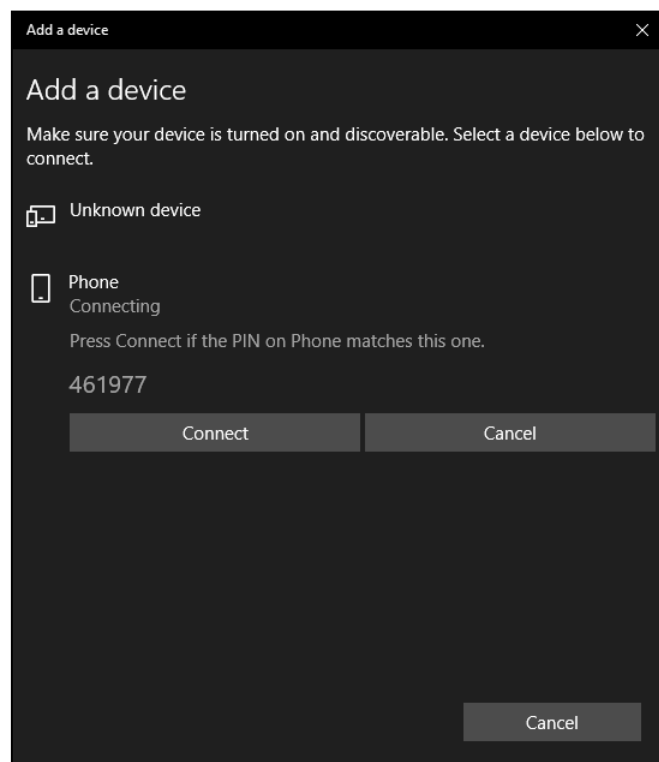
5. The system will start scanning for other Bluetooth activated device in the vicinity.



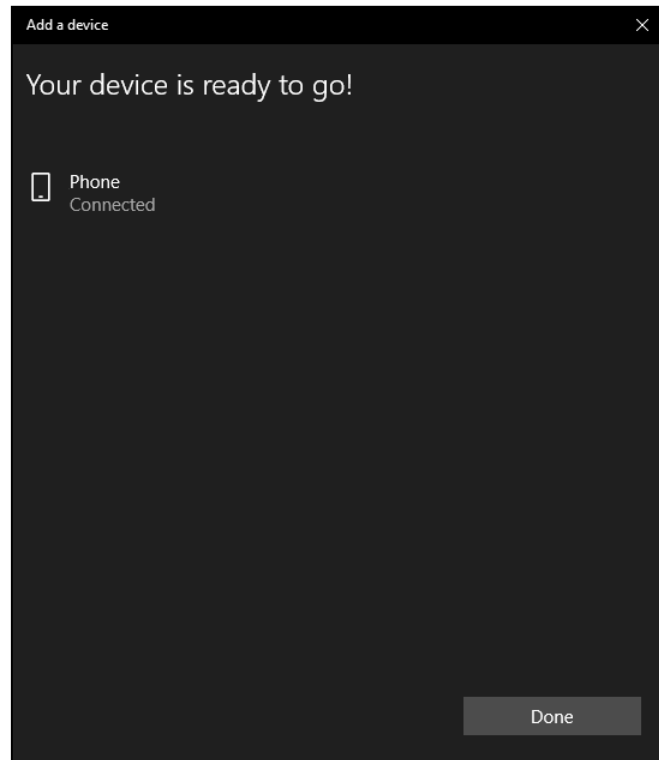
6. Click the Bluetooth device you wish to connect.



7. Check your Bluetooth device to see if the PIN matches. Click "Connect" if the PIN is correct.



8. Your device is ready for use if you see the message shown below:



VI-3 Mac – Wi-Fi

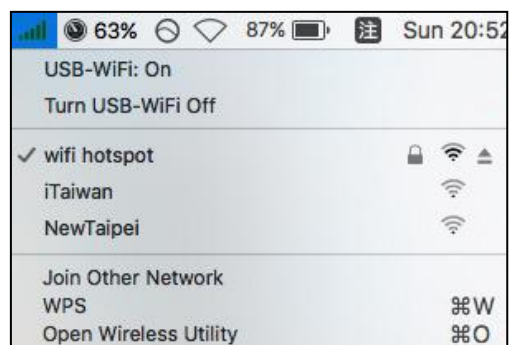
1. Click the new USB adapter icon from the menu in the top right of your Mac desktop and select your Wi-Fi network as you usually would.



2. Enter the password (network key) for the Wi-Fi network and click “Join”.



3. After entering your password, you will be successfully connected to your Wi-Fi network and the icon will display the Wi-Fi signal strength.



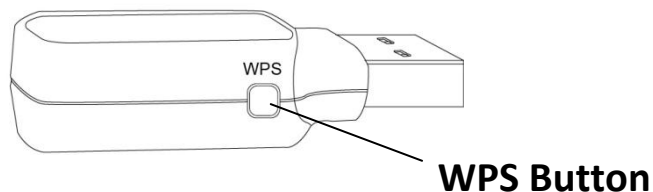
4. You can use the other items in the menu to switch your USB adapter on/off, join another network (manually enter SSID name) display WPS PIN or activate WPS push button mode.

VI-4 WPS

WPS (Wi-Fi Protected Setup) is a simple, alternative way to establish connections between WPS compatible devices. Most modern wireless network devices feature a built-in WPS button, which activates WPS on that device. When WPS is activated in the correct manner and at the correct time for two compatible devices, they will automatically connect to each other.

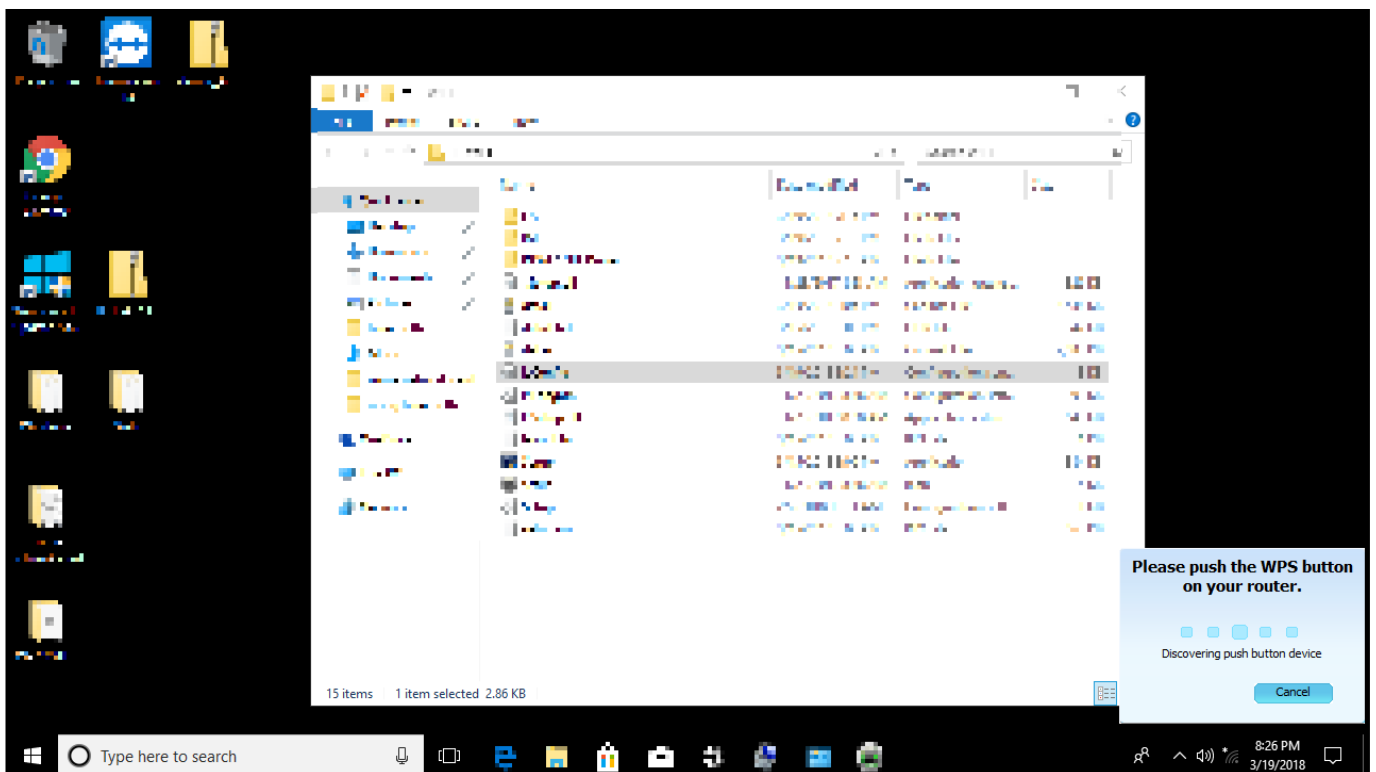
WPS Button

The WPS button of the unit is shown below:



Connect Via WPS

1. On your WPS router, activate the WPS function (by pressing its WPS button or by using its router interface).
2. Immediately, activate the WPS function of the adapter by pressing and holding the WPS button (of the adapter) until a pop-up window appears on the right-hand bottom corner of your screen. An example is shown below:



The green LED of the adapter will start flashing slowly.
When the connection is established, the green LED will flash quickly.



The green LED is only visible if Bluetooth feature is turned off (blue LED off).

COPYRIGHT

Copyright © Edimax Technology Co., Ltd. all rights reserved. No part of this publication may be reproduced, transmitted, transcribed, stored in a retrieval system, or translated into any language or computer language, in any form or by any means, electronic, mechanical, magnetic, optical, chemical, manual or otherwise, without the prior written permission from Edimax Technology Co., Ltd.

Edimax Technology Co., Ltd. makes no representations or warranties, either expressed or implied, with respect to the contents hereof and specifically disclaims any warranties, merchantability, or fitness for any particular purpose. Any software described in this manual is sold or licensed as is. Should the programs prove defective following their purchase, the buyer (and not this company, its distributor, or its dealer) assumes the entire cost of all necessary servicing, repair, and any incidental or consequential damages resulting from any defect in the software. Edimax Technology Co., Ltd. reserves the right to revise this publication and to make changes from time to time in the contents hereof without the obligation to notify any person of such revision or changes.

The product you have purchased and the setup screen may appear slightly different from those shown in this QIG. The software and specifications are subject to change without notice. Please visit our website www.edimax.com for updates. All brand and product names mentioned in this manual are trademarks and/or registered trademarks of their respective holders.

Federal Communication Commission Interference Statement

This equipment has been tested and found to comply with the limits for a Class B digital device, pursuant to Part 15 of FCC Rules. These limits are designed to provide reasonable protection against harmful interference in a residential installation. This equipment generates, uses, and can radiate radio frequency energy and, if not installed and used in accordance with the instructions, may cause harmful interference to radio communications. However, there is no guarantee that interference will not occur in a particular installation. If this equipment does cause harmful interference to radio or television reception, which can be determined by turning the equipment off and on, the user is encouraged to try to correct the interference by one or more of the following measures:

1. Reorient or relocate the receiving antenna.
2. Increase the separation between the equipment and receiver.
3. Connect the equipment into an outlet on a circuit different from that to which the receiver is connected.
4. Consult the dealer or an experienced radio technician for help.

FCC Caution

This device and its antenna must not be co-located or operating in conjunction with any other antenna or transmitter. This device complies with Part 15 of the FCC Rules. Operation is subject to the following two conditions: (1) this device may not cause harmful interference, and (2) this device must accept any interference received, including interference that may cause undesired operation. Any changes or modifications not expressly approved by the party responsible for compliance could void the authority to operate equipment.

Federal Communications Commission (FCC) Radiation Exposure Statement

This equipment complies with FCC radiation exposure set forth for an uncontrolled environment. In order to avoid the possibility of exceeding the FCC radio frequency exposure limits, human proximity to the antenna shall not be less than 0.5 cm during normal operation.

RED Compliance Statement

Compliance with 2014/53/EU Radio Equipment Directive (RED)

In accordance with Article 10.8(a) and 10.8(b) of the RED, the following table provides information on the frequency bands used and the maximum RF transmit power of the product for sale in the EU:

Frequency range (MHz)	Max. Transmit Power (dBm)
2400-2483.5	19.99
2400-2483.5 (BR/EDR)	8.74
2400-2483.5 (LE)	3.15
5150-5250	22.97
5250-5350	22.87
5470-5725	22.92

A simplified DoC shall be provided as follows: Article 10(9)

Hereby, Edimax Technology Co., Ltd. declares that the radio equipment type **11ac 1T1R Wireless LAN with Bluetooth USB Dongle** is in compliance with Directive 2014/53/EU

The full text of the EU declaration of conformity is available at the following internet address: <http://www.edimax.com/edimax/global/>

Safety

This equipment is designed with the utmost care for the safety of those who install and use it. However, special attention must be paid to the dangers of electric shock and static electricity when working with electrical equipment. All guidelines of this and of the computer manufacture must therefore be allowed at all times to ensure the safe use of the equipment.

EU Countries Intended for UseThe ETSI version of this device is intended for home and office use in Austria, Belgium, Bulgaria, Cyprus, Czech, Denmark, Estonia, Finland, France, Germany, Greece, Hungary, Ireland, Italy,

Latvia, Lithuania, Luxembourg, Malta, Netherlands, Poland, Portugal, Romania, Slovakia, Slovenia, Spain, Sweden, Turkey, and United Kingdom. The ETSI version of this device is also authorized for use in EFTA member states: Iceland, Liechtenstein, Norway, and Switzerland.

EU Countries Not Intended for Use

None

EU Declaration of Conformity

- English:** This equipment is in compliance with the essential requirements and other relevant provisions of Directive 2014/53/EU, 2014/35/EU.
- Français:** Cet équipement est conforme aux exigences essentielles et autres dispositions de la directive 2014/53/EU, 2014/35/EU.
- Čeština:** Toto zařízení je v souladu se základními požadavky a ostatními příslušnými ustanoveními směrnice 2014/53/EU, 2014/35/EU.
- Polski:** Urządzenie jest zgodne z ogólnymi wymaganiami oraz szczególnymi warunkami określonymi Dyrektywą UE 2014/53/EU, 2014/35/EU.
- Română:** Acest echipament este în conformitate cu cerințele esențiale și alte prevederi relevante ale Directivei 2014/53/UE, 2014/35/UE.
- Русский:** Это оборудование соответствует основным требованиям и положениям Директивы 2014/53/EU, 2014/35/EU.
- Magyar:** Ez a berendezés megfelel az alapvető követelményeknek és más vonatkozó irányelveknek (2014/53/EU, 2014/35/EU).
- Türkçe:** Bu cihaz 2014/53/EU, 2014/35/EU direktifleri zorunlu istekler ve diğer hükümlerle ile uyumludur.
- Українська:** Обладнання відповідає вимогам і умовам директиви 2014/53/EU, 2014/35/EU.
- Slovenčina:** Toto zariadenie spĺňa základné požiadavky a ďalšie príslušné ustanovenia smerníc 2014/53/EU, 2014/35/EU.
- Deutsch:** Dieses Gerät erfüllt die Voraussetzungen gemäß den Richtlinien 2014/53/EU, 2014/35/EU.
- Español:** El presente equipo cumple los requisitos esenciales de la Directiva 2014/53/EU, 2014/35/EU.
- Italiano:** Questo apparecchio è conforme ai requisiti essenziali e alle altre disposizioni applicabili della Direttiva 2014/53/EU, 2014/35/UE.
- Nederlands:** Dit apparaat voldoet aan de essentiële eisen en andere van toepassing zijnde bepalingen van richtlijn 2014/53/EU, 2014/35/EU.
- Português:** Este equipamento cumpre os requisitos essenciais da Directiva 2014/53/EU, 2014/35/EU.
- Norsk:** Dette utstyret er i samsvar med de viktigste kravene og andre relevante regler i Direktiv 2014/53/EU, 2014/35/EU.
- Svenska:** Denna utrustning är i överensstämmelse med de väsentliga kraven och övriga relevanta bestämmelser i direktiv 2014/53/EU, 2014/35/EU.
- Dansk:** Dette udstyr er i overensstemmelse med de væsentligste krav og andre relevante forordninger i direktiv 2014/53/EU, 2014/35/EU.
- suomen kieli:** Tämä laite täyttää direktiivien 2014/53/EU, 2014/35/EU. oleelliset vaatimukset ja muut asiaankuuluvat määräykset.

FOR USE IN 



WEEE Directive & Product Disposal



At the end of its serviceable life, this product should not be treated as household or general waste. It should be handed over to the applicable collection point for the recycling of electrical and electronic equipment, or returned to the supplier for disposal.

Declaration of Conformity

We, Edimax Technology Co., Ltd., declare under our sole responsibility, that the equipment described below complies with the requirements of the European Radio Equipment directives.

Equipment: 11ac 1T1R Wireless LAN with Bluetooth USB Dongle
Model No.: EW-7611UCB

The following European standards for essential requirements have been followed:

Directives 2014/53/EU

Spectrum : EN 300 328 V2.1.1 (2016-11)
EN 301 893 V2.1.1 (2017-05)
EMC : EN 301 489-1 V2.2.0 (2017-03)
EN 301 489-17 V3.2.0 (2017-03)
EMF : EN 62311:2008

Directives 2014/35/EU

Safety (LVD) : IEC 60950-1:2005 (2nd Edition)+Am 1:2009+Am 2:2013
EN 60950-1:2006+A11:2009+A1:2010+A12:2011+A2:2013

Edimax Technology Europe B.V.
Fijenhof 2,
5652 AE Eindhoven,
The Netherlands

a company of :
Edimax Technology Co., Ltd.
No. 278, Xinhua 1st Rd.,
Neihu Dist., Taipei City,
Taiwan

Signature:

Printed Name: Vivian Ma
Title: Director
Edimax Technology Europe B.V.



Date of Signature: April, 2018

Signature:

Printed Name: Albert Chang

Title: Director

Edimax Technology Co., Ltd.