



Questo manuale d'istruzione è fornito da trovaprezzi.it. Scopri tutte le offerte per [D-Link DAP-3712](#) o cerca il tuo prodotto tra le [migliori offerte di Altri dispositivi di rete](#)



Questo manuale d'istruzione è fornito da trovaprezzi.it. Scopri tutte le offerte per [D-Link DAP-3712](#) o cerca il tuo prodotto tra le [migliori offerte di Wireless e Bluetooth](#)

D-Link

5 km / 20 km Long Range 802.11ac Wireless Bridges

Resilient solutions that overcome the challenges of rural areas and tricky terrain to supply stable, high-speed connectivity over vast distances

DAP-3711 / DAP-3712



High-Gain Directional Antenna

Fast, stable, and long-range wireless coverage



TDMA Technology

High speeds and consistent coverage that filters out interference



IP66 Rated

Water-resistant and dust-tight housing boasts a longer product life



PoE Ready

Power over Ethernet makes for a cleaner installation



8 kV Surge Protection

Your device and network are protected against unexpected surges, such as lightning



High-Speed Wi-Fi

Blazing speeds of up to 867 Mbps



Wi-Fi Security

128-bit personal and enterprise wireless encryption



Durable, Industrial Design

Modest yet resilient design endures external conditions while easily blending into surroundings



5 km / 20 km Long Range 802.11ac Wireless Bridges

DAP-3711 & DAP-3712

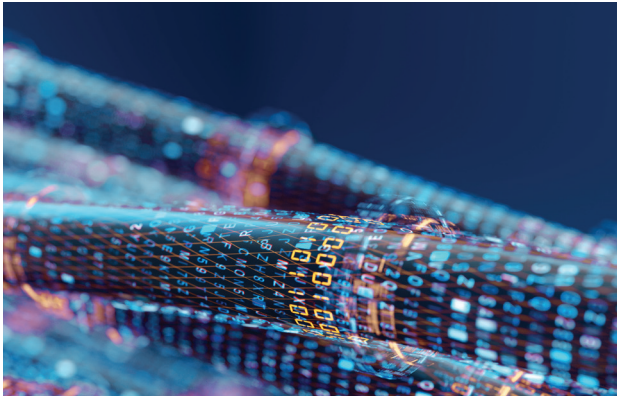
- The DAP-3711 & DAP-3712 feature high-gain 15 and 23 dBi directional antennas respectively, supplying high-speed, stable coverage to up to 20 km away
- Integrated TDMA Technology cuts through interference to ensure high-speed, consistent coverage
- Superior throughput with single-band transfer speeds of up to 867 Mbps
- Refined design effortlessly blends into any setting
- Stay secure with 128-bit personal and enterprise wireless encryption
- Support for Power over Ethernet means less wires, for cleaner and easier deployment
- The DAP-3711 and DAP-3712 both feature an IP66 rating, boasting water-resistant and dust-tight housings

The DAP-3711 & DAP-3712 are essential solutions in providing connectivity to previously believed impossible-to-reach areas. Industry leading core technologies, especially designed for long distance coverage, bring high-speed connectivity to rural areas and challenging terrain equivalent to that of a wired connection.

THE POWER TO DELIVER LONG-DISTANCE CONNECTIVITY

Long Range 802.11ac Wireless Bridges | DAP-3711 / DAP-3712





TDMA Technology Cuts Through the Chatter, Creating Even Stabler Coverage

The DAP-3711 & DAP-3712's transmission capabilities are augmented thanks to their integrated Time Division Multiple Access (TDMA). Everything works more efficiently on a schedule, and the DAP-3711 & DAP-3712 are no different: TDMA creates a schedule for multiple connected clients to work to. Senders and receivers get their own time slot for transmissions. This eliminates hidden node data collisions, in turn maximizing airtime efficiency, significantly cutting down interference and making for a highly scalable solution.



TDMA Protocol



Intelligent Rate Control



Cutting Edge Hardware Makes the Previously Impossible, Possible

The DAP-3711 & DAP-3712 feature state-of-the-art hardware, including high-gain 15 and 23 dBi directional antennas respectively. These powerful antennas effortlessly extend high-speed coverage to distances of up to 5 or 20 km away.



High-Gain Directional Antenna



Up to 867 Mbps



Discreet Deployment that's Hassle-Free with Power Over Ethernet (PoE)

Power sockets can be tricky to come by, especially in outdoor deployments. But PoE makes for easy installation and a simple, clean setup.

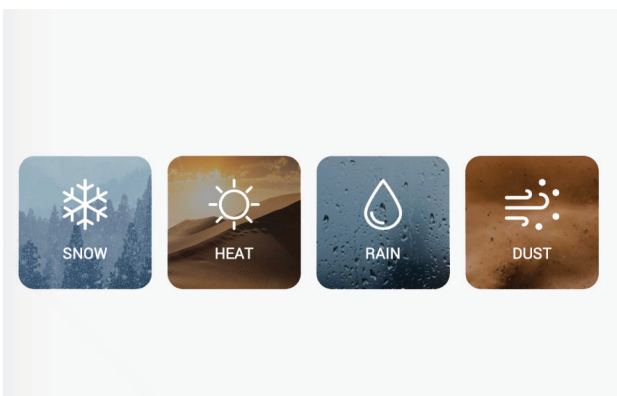
No need to run extra power lines, no added hassle when configuring your hardwiring, and no more cable clutter.



Unobtrusive Design



PoE for Easy Deployment



Form Without Sacrificing Function

It can be hard to look good while still being functional, yet these devices strike the balance just right. The DAP-3711's smooth case in crisp white makes for a low-key form, effortlessly fitting into any outdoor setting. Meanwhile the DAP-3712 features a compact dish form factor, effortlessly supplying long distance coverage.

Both devices boast an IP66 rating, meaning they fight dust and repel water for a longer product life.



8 kV ESD Protection





Water-Resistant and Dust-Tight

Technical Specifications

/ DAP-3711, DAP-3712

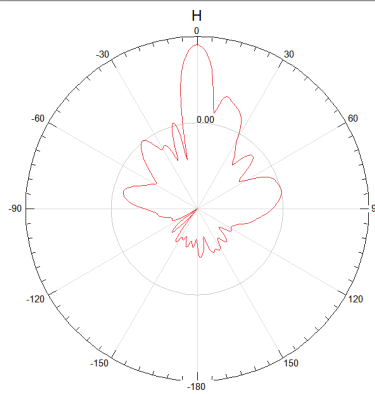
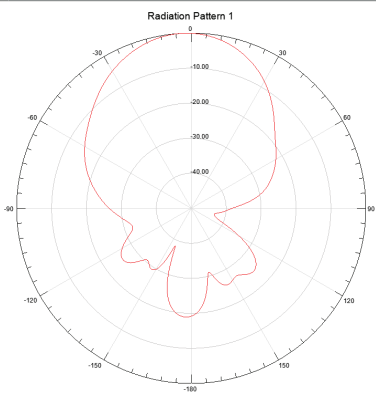
| Model | DAP-3711 | DAP-3712 |
|----------------------------------|---|---|
| Product Image |  |  |
| General | | |
| Device Interfaces | 2 x 100/1000 Mbps Ethernet port, reset button | 1 x 100/1000 Mbps Ethernet port, reset button |
| LEDs | Power, LAN, WLAN, signal strength | Signal strength |
| Antenna Type | Internal | Dish |
| Antenna Gain | 15 dBi | 23 dBi |
| Beamwidth | H: 40°, V: 15° | H: 10°, V: 10° |
| Standards | 802.11a/n/ac | 802.11a/n/ac |
| Protection | 8 kV ESD Protection | 8 kV ESD Protection |
| Enclosure | ABS, IP66 compliant | ABS, IP66 compliant |
| Functionality | | |
| Operation Modes | AP, Station, WDS AP, WDS Station | AP, Station, WDS AP, WDS Station |
| Operating Frequency | 5180~5320 MHz, 5745~5825 MHz | 5180~5320 MHz, 5745~5825 MHz |
| Max. Transmit Power ¹ | 27 dBm | 27 dBm |
| Wireless Speed | Up to 867 Mbps | Up to 867 Mbps |
| Bandwidth Support | 20/40/80 MHz | 20/40/80 MHz |
| Software | | |
| Wireless Configuration | Auto channel support, transmit power selection, SSID broadcast enabling/disabling | Auto channel support, transmit power selection, SSID broadcast enabling/disabling |
| Security | 802.11i 128-bit AES Personal / Enterprise | 802.11i 128-bit AES Personal / Enterprise |
| System Tools | Ping, traceroute, NTP, ping watchdog, syslog, spectrum analyzer, throughput testing (lperf) | Ping, traceroute, NTP, ping watchdog, syslog, spectrum analyzer, throughput testing (lperf) |
| Smart Wireless Technology | TDMA, Auto ACK, intelligent rate control, co-channel interference avoidance | TDMA, Auto ACK, intelligent rate control, co-channel interference avoidance |
| Advanced Features | Max. station limit | Max. station limit |
| LAN Type | Static, DHCP | Static, DHCP |
| VLAN Support | Yes | Yes |
| Firewall | IP / MAC filter | IP / MAC filter |
| Monitors | Throughput, interfaces, routes table, bridge table, ARP table, AP information, syslog | Throughput, interfaces, routes table, bridge table, ARP table, AP information, syslog |
| Firmware Upgrade | Web-based upgrade | Web-based upgrade |

Technical Specifications / DAP-3711, DAP-3712

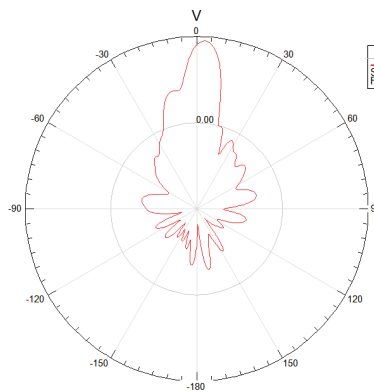
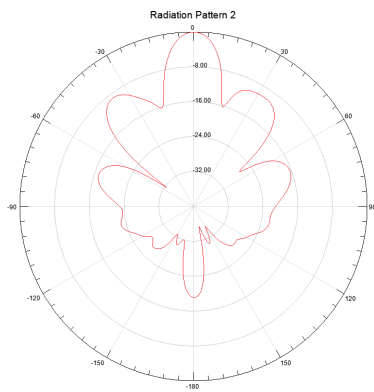
| Model | DAP-3711 | DAP-3712 |
|-----------------------|---|--|
| Product Image |  |  |
| Physical | | |
| Power Input | PoE 24 V | PoE+ 48 V |
| Power Consumption | ≤ 15 W | ≤ 15 W |
| Operating Temperature | -40°C to 65°C | -40°C to 65°C |
| Storage Temperature | -40°C to 85°C | -40°C to 85°C |
| Operating Humidity | 0% to 90% | 0% to 90% |
| Storage Humidity | 0% to 90% | 0% to 90% |
| Weight | 600 g (1.3 lbs) | 900 g (2.0 lbs) |
| Dimensions | 288 x 88 x 45 mm (11.3 x 3.4 x 1.8 in) | 372 x 372 x 241 mm (14.6 x 14.6 x 9.5 in) |
| Certifications | CE, FCC | CE, FCC |

Antenna Patterns

Horizontal



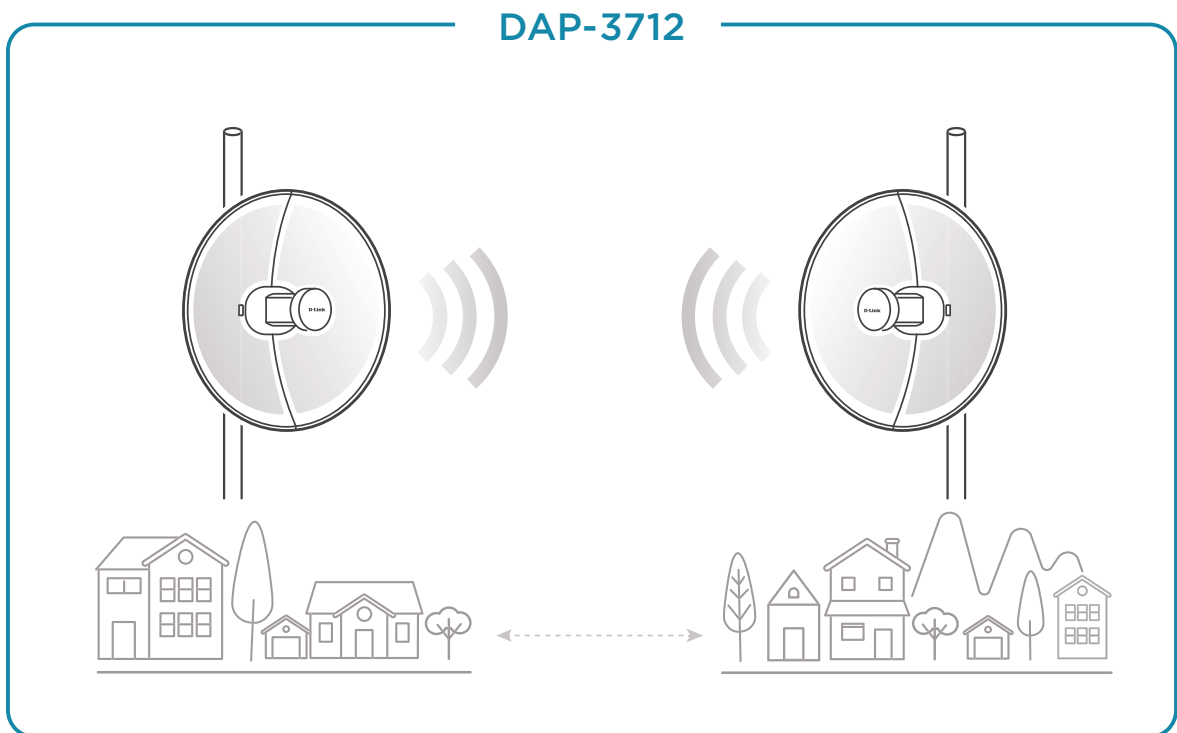
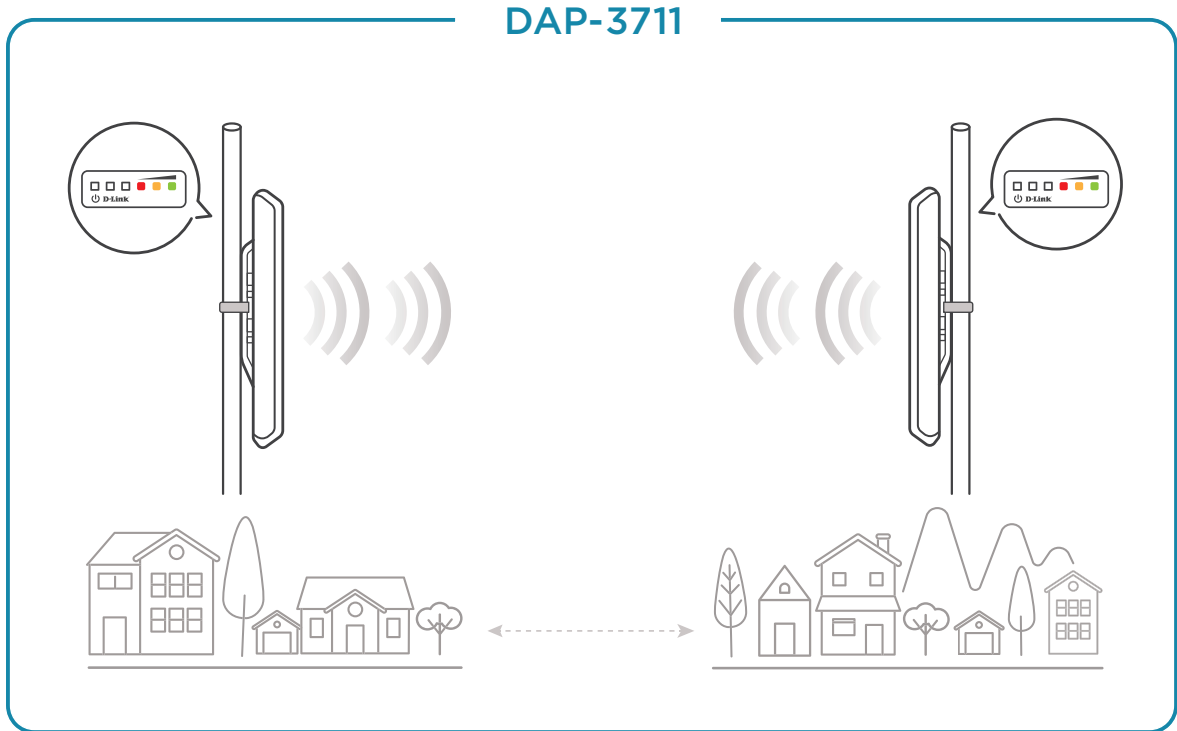
Vertical



Order Information

| | |
|----------|---|
| DAP-3711 | 5 km Long Range 802.11ac Wireless Bridge |
| DAP-3712 | 20 km Long Range 802.11ac Wireless Bridge |

Topology / DAP-3711, DAP-3712



¹ Note that the maximum transmit power varies depending on the regulations of individual countries and jurisdictions.

Product specifications, size and shape are subject to change without notice, and actual product appearance may differ from that depicted on the package.

© 2020 D-Link. All Rights Reserved. D-Link and the D-Link logo are trademarks or registered trademarks of D-Link. All other third-party marks mentioned herein may be trademarks of their respective owners.