



Questo manuale d'istruzione è fornito da trovaprezzi.it. Scopri tutte le offerte per [Kitchenaid 5KCM1208](#) o cerca il tuo prodotto tra le [migliori offerte di Macchine da Caffè](#)

trovaprezzi.it

Questo manuale d'istruzione è fornito da trovaprezzi.it. Scopri tutte le offerte per [Kitchenaid 5KCM1208](#) o cerca il tuo prodotto tra le [migliori offerte di Macchine da Caffè](#)

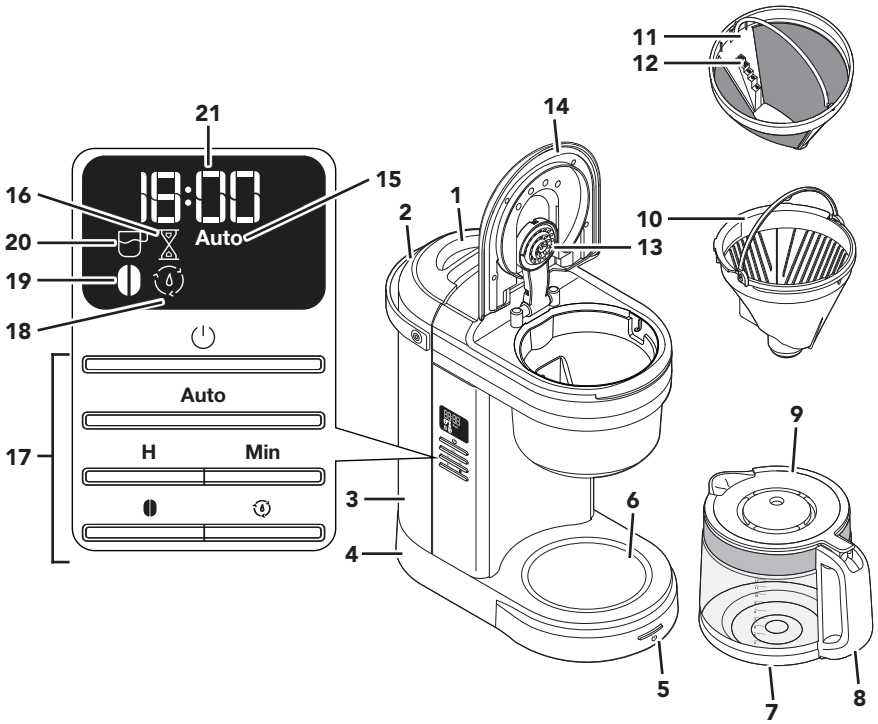
KitchenAid

Coffee Maker 5KCM1208



EN	Use & Care manual	2	NO	Håndbok for bruk og vedlikehold	111
DE	Gebrauchs- und Pflegeanleitung	15	FI	Käyttö- ja huolto-opas	123
FR	Manuel d'utilisation et d'entretien	27	DA	Vejledning til anvendelse og vedligehold	135
IT	Manuale d'uso e manutenzione	39	IS	Notenda & Meðhöndlunar handbók	147
NL	Gebruiks- en onderhoudshandleiding	51	RU	Руководство по эксплуатации и уходу	159
ES	Manual de uso y cuidado	63	PL	Instrukcja obsługi i konserwacji	171
PT	Manual de utilização e manutenção	75	CS	Návod k použití a údržbě	183
EL	Εγχειρίδιο Χρήσης και Φροντίδας	87	TR	Kullanım ve Bakım kılavuzu	195
SV	Handbok för skötsel och användning	99	AR	دليل الاستخدام والعناية	1

PARTS AND FEATURES



- | | |
|-------------------------------------|-----------------------------------|
| 1. Water Tank Lid | 12. Dosage Ladder |
| 2. Water Tank Handle | 13. Showerhead |
| 3. Water Tank | 14. Brew Basket Lid |
| 4. Cord Storage in Base (not shown) | 15. Auto Icon |
| 5. Brew/Cancel Button | 16. Remaining Keep Warm Time Icon |
| 6. Warming Plate | 17. Control Panel |
| 7. Glass Carafe | 18. Clean Icon |
| 8. Carafe Handle | 19. Bold Icon |
| 9. Carafe Lid | 20. Brew Icon |
| 10. Brew Basket | 21. Clock |
| 11. Gold Tone Filter | |

NOTE: Default measurement for 1 cup = approximately 147 ml.

Your safety and the safety of others are very important.

We have provided many important safety messages in this manual and on your appliance. Always read and obey all safety messages.



This is the safety alert symbol.

This symbol alerts you to potential hazards that can kill or hurt you and others.

All safety messages will follow the safety alert symbol and either the word "DANGER" or "WARNING." These words mean:

 **DANGER**

You can be killed or seriously injured if you don't immediately follow instructions.

 **WARNING**

You can be killed or seriously injured if you don't follow instructions.


All safety messages will tell you what the potential hazard is, tell you how to reduce the chance of injury, and tell you what can happen if the instructions are not followed.

IMPORTANT SAFEGUARDS

When using electrical appliances, basic safety precautions should always be followed, including the following:

1. Read all instructions. Misuse of appliance may result in personal injury.
2. European Union only: Appliances can be used by persons with reduced physical, sensory or mental capabilities or lack of experience and knowledge if they have been given supervision or instruction concerning use of the appliance in a safe way and understand the hazards involved. Children shall not play with the appliance.
3. European Union only: This appliance shall not be used by children. Keep the appliance and its cord out of reach of children.
4. Do not touch hot surfaces. Use handles or knobs.
5. Do not operate any appliance with a damaged cord or plug or after the appliance malfunctions or is dropped or damaged in any manner. Return appliance to the nearest Authorised Service Centre for examination, repair or adjustment.
6. To protect against fire, electric shock and injury to persons do not immerse appliance in water or other liquid.
7. Unplug from outlet when not in use and before cleaning. Allow to cool before putting on or taking off parts, and before cleaning the appliance.
8. Close supervision is necessary when any appliance is used by or near children.
9. Do not let cord hang over the edge of table or counter or touch hot surfaces.
10. This appliance is not intended for use by persons (including children) with reduced physical, sensory or mental capabilities, or lack of experience and knowledge, unless they have been given supervision or instruction concerning use of the appliance by a person responsible for their safety.

PRODUCT SAFETY


11. Children should be supervised to ensure that they do not play with the appliance.
12. Do not place on or near a hot gas or electric burner, or in a heated oven.
13. The use of attachments not recommended or sold by KitchenAid may cause fire, electrical shock, or injury.
14. Do not use the appliance outdoors.
15. Do not use appliance for other than intended use.
16. Do not use appliance without lid properly placed on Carafe.
17. The Carafe is designed for use with this appliance. It must never be used on a range top or in a microwave oven.
18. Do not set a hot Carafe on a wet or cold surface.
19. To disconnect, press the  button, then remove plug from wall outlet.
20. Scalding may occur if the lid is removed during the brewing cycles.
21. Do not use a cracked Carafe or a Carafe having a loose or weakened handle.
22. Do not clean Carafe with abrasive cleaners, steel wool pads, or other abrasive material.
23. Do not fill the Water Tank above the marked maximum fill line.
24. Do not overfill Glass Carafe. If the Glass Carafe is overfilled, brewed coffee may be ejected.
25. This appliance is intended to be used in household and similar applications such as:
 - staff kitchen areas in shops, farmhouses, offices, or other working environments;
 - farmhouses;
 - by clients in hotels, motels and other residential type environments;
 - bed and breakfast type environments.
26. Refer to the “Care and Cleaning” section for instructions on cleaning the surfaces in contact with food.
27. If the supply cord is damaged, it must be replaced by the manufacturer, its service agent or similarly qualified persons in order to avoid a hazard.
28. The heating element surface is subject to residual heat after use. Do not touch hot surface. w

SAVE THESE INSTRUCTIONS

PRODUCT SAFETY

ELECTRICAL REQUIREMENTS

⚠ WARNING



Electrical Shock Hazard

Plug into an earthed outlet.

Do not remove earth prong.

Do not use an adapter.

Do not use an extension cord.

Failure to follow these instructions can result in death, fire, or electrical shock.

Voltage: 220-240 Volts AC

Frequency: 50-60 Hz

Wattage: 1100 Watts


NOTE: If the plug does not fit in the outlet, contact a qualified electrician. Do not modify the plug in any way. Do not use an adapter.

Do not use an extension cord. If the power supply cord is too short, have a qualified electrician or service technician to install an outlet near the appliance.

The cord should be arranged so that it will not drape over the countertop or tabletop where it can be pulled on by children or tripped over unintentionally.

ELECTRICAL EQUIPMENT WASTE DISPOSAL

Disposal of packing material

The packing material is 100% recyclable and is marked with the recycle symbol . The various parts of the packing must therefore be disposed of responsibly and in full compliance with local authority regulations governing waste disposal.


Scrapping the product

- This appliance is marked in compliance with European Directive 2012/19/EU, Waste Electrical and Electronic Equipment (WEEE).

- By ensuring this product is disposed of correctly, you will help prevent potential negative consequences for the environment and human health, which could otherwise be caused by

inappropriate waste handling of this product.



- The symbol  on the product or on the accompanying documentation indicates that it should not be treated as domestic waste but must be taken to an appropriate collection centre for the recycling of electrical and electronic equipment.

For more detailed information about treatment, recovery and recycling of this product, please contact your local city office, your household waste disposal service, or the shop where you purchased the product.

DECLARATION OF CONFORMITY

This appliance has been designed, constructed and distributed in compliance with the safety requirements of EC Directives: 2014/35/EU, 2014/30/EU, 2009/125/EC and 2011/65/EU (RoHS Directive).

GETTING STARTED

SETTING THE CLOCK

! WARNING



Electrical Shock Hazard

Plug into an earthed outlet.

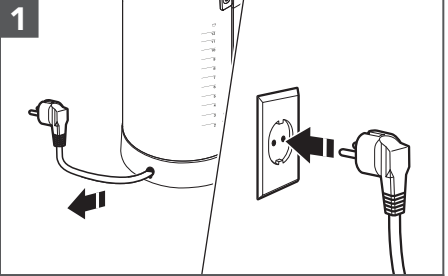
Do not remove earth prong.

Do not use an adapter.

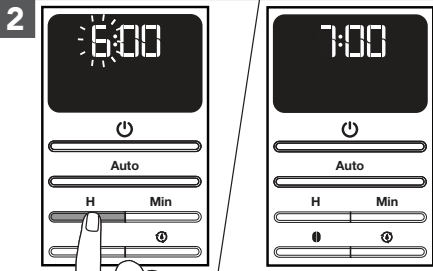
Do not use an extension cord.

Failure to follow these instructions can result in death, fire, or electrical shock.

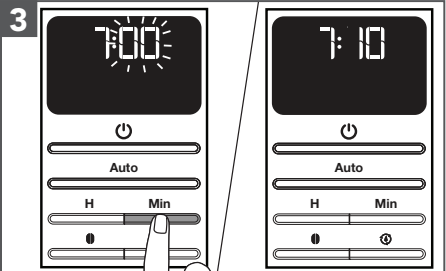
NOTE: When the Coffee Maker is first plugged in or when power is restored after an interruption, the display will initially show 12:00.



Cord is stored in the base. If needed, gently pull cord outwards. Plug into an earthed outlet.



Press **H** to set the hour. The hour digits will change with each press; or press and hold to scroll rapidly.

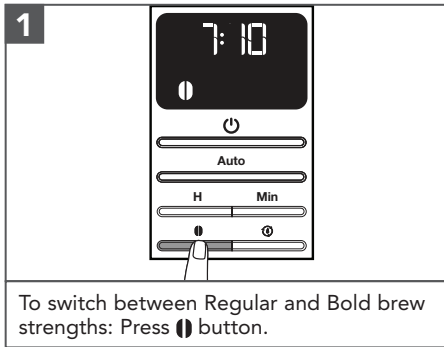


Press **Min** to set the minutes.

To save the current displayed time and exit clock set-up: Press any other button or do not press any button for 10 seconds.

PRODUCT USAGE

SETTING THE BREW STRENGTH

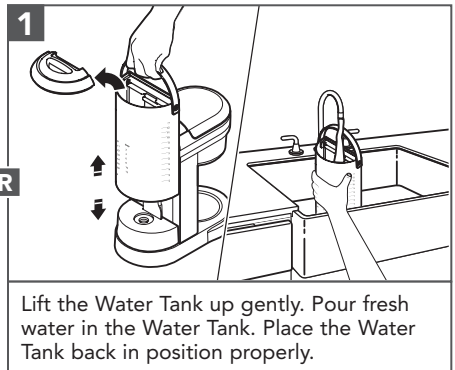
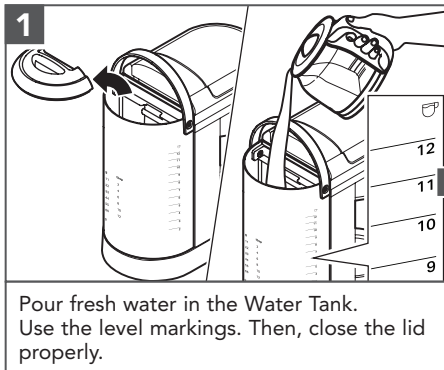


NOTE: Regular is the default setting.

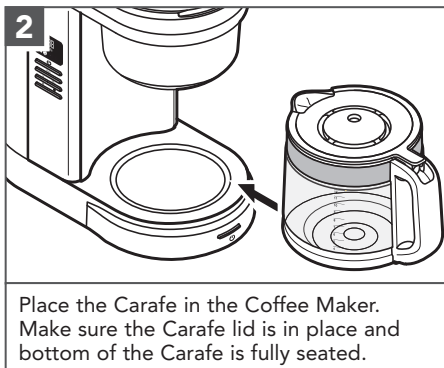
TIP: While brewing small batches (2-4 cups), using the "Bold Setting" is recommended.

FILLING WATER FOR BREWING

TIP: Brew 2 Carafe of fresh, cool water and discard before brewing the first Carafe of coffee.

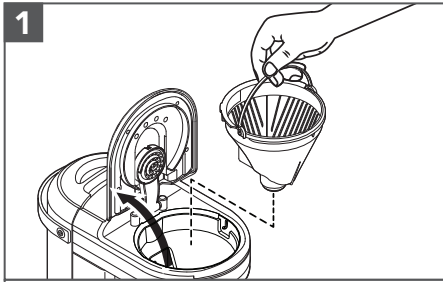


NOTE: Fill the Water Tank with only the amount of water needed to brew your desired number of cups. If you put in 12 cups of water, the Coffee Maker will brew all 12 cups.

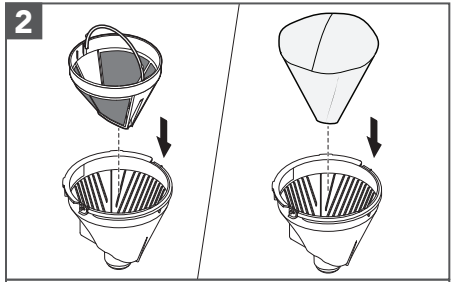


PRODUCT USAGE

ASSEMBLY OF BREW BASKET

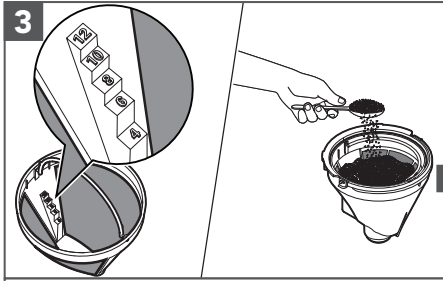


1 Raise the Brew Basket lid and remove the Brew Basket.

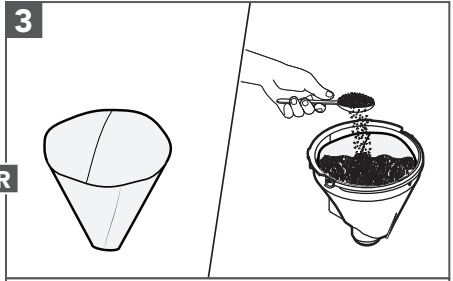


2 Insert the Gold Tone permanent filter or cone paper filter into the Brew Basket.

TIP: The coffee filter can also be inserted and coffee grounds added with or without removing the Brew Basket from the Coffee Maker.

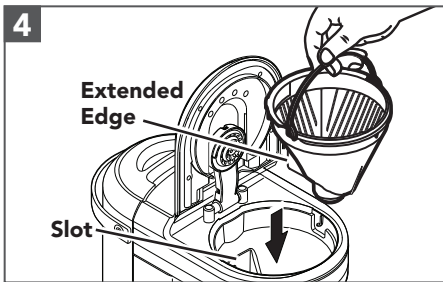


3 **Gold tone permanent filter:** Add coffee grounds. Use the "Dosage Ladder".
For example: If you need 8 cups of Brew Coffee, then add coffee grounds till 8 cups scale level.

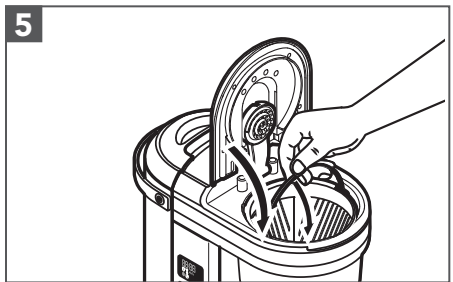


3 **Cone paper coffee filter:** Add desired coffee grounds. Use the "coffee dosage chart" on the back of the Water Tank as a guide for how much coffee grounds to use. Pre-wetting the paper is not required.

IMPORTANT: Do not use both types of filters at the same time. Using both filters might cause water and coffee to overflow the Brew Basket.



4 Place the basket into the Coffee Maker aligning with the slot.

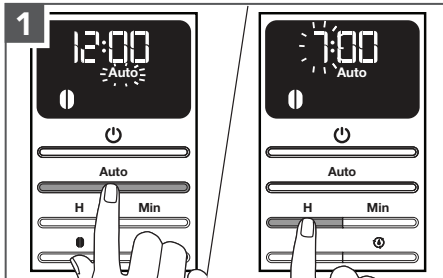


5 Be sure the Brew Basket lid is fully closed before brewing.

PRODUCT USAGE

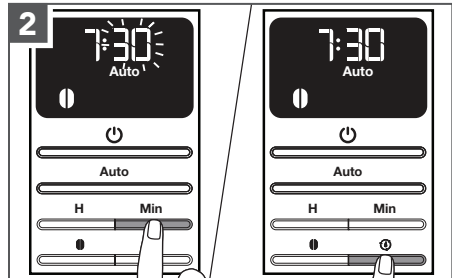
PROGRAMMING THE AUTO SET FEATURE

IMPORTANT: Set the correct time as per the instructions in "Setting the clock" before using the Auto Set feature.




Press the **Auto** button one time. The Auto indicator light will flash and the time display will change to the currently set Auto Set time (12:00 is the default time).

To set the time the Coffee Maker should begin brewing: Press the **H** button to set hour. The hour digits will change with each press; or press and hold to scroll rapidly.



Next, press the **Min** button to set minute. The hour setting will stay solid and the minute setting will begin to blink.

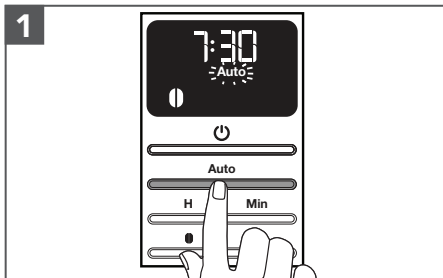
To save the Auto set time and exit set-up: Press any other button or do not press any button for 10 seconds. The Auto indicator will remain lit and the time display will go back to the current time.

TIP: To cancel the Auto Set time after programming is complete: Press **Auto** button again; or press the  button.

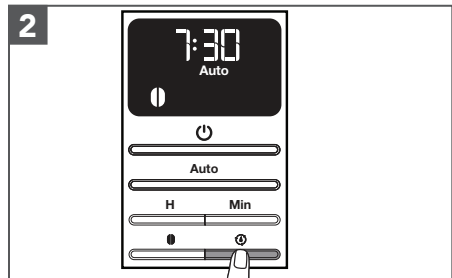
NOTE: Default standard brewing cycle time for a full Carafe (12 cups) is approximately 10-minutes.

USING THE PREVIOUSLY PROGRAMMED AUTO SET TIME

These steps can be followed to save the Auto Set time after following the steps in the "Programming the Auto Set feature" section.

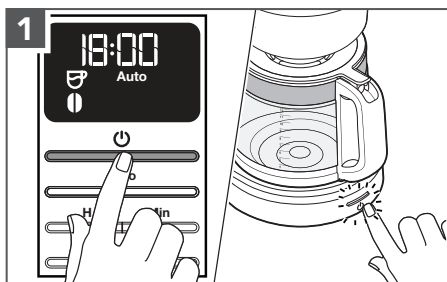


Press the **Auto** button. The Auto indicator will flash and the time display will show the previously set Auto time.

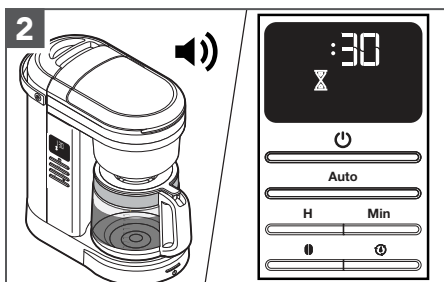


To save the current displayed time and exit set-up: Wait for 10 seconds, or press any button. The Auto indicator will remain lit and the time display will go back to the current time.

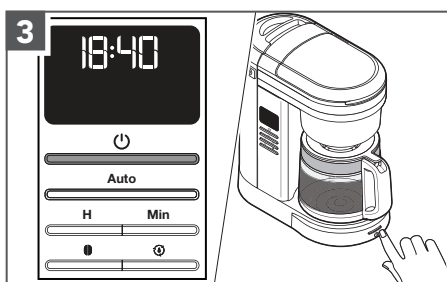
BREWING COFFEE




Press any of the  buttons provided on side or on front to begin brewing coffee.



The Coffee Maker will beep 3 times when the Brew cycle is complete. Then, 30 minutes Warm mode will start.



After Warm mode end, the Coffee Maker will automatically turn off. To Cancel Brew cycle or Warm mode, press the  button once.

TIP: Opening the Brew Basket while coffee is brewing will interrupt the brew process and impair the flavour.

IMPORTANT: Allow the Coffee Maker to cool for 5 minutes before starting next brew cycle.

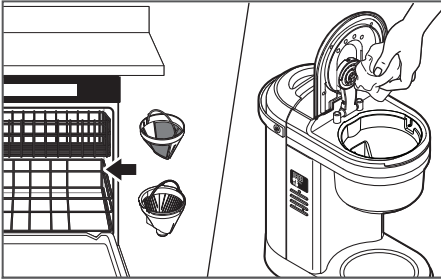
PAUSE AND POUR FEATURE

The "Pause and pour" feature enables you to remove the Carafe and pour a cup of coffee before brewing is finished. When the Carafe is removed, a special valve stops the flow of coffee from the Brew Basket. However, brewing does not stop.

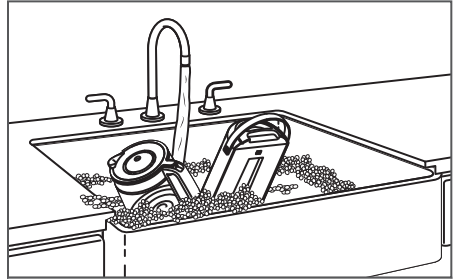
Make sure to place the Carafe back in the place within 25 seconds to avoid the overflow of the water and coffee grounds from the Brew Basket.

CARE AND CLEANING

NOTE: Unplug and allow the Coffee Maker to cool down before cleaning.



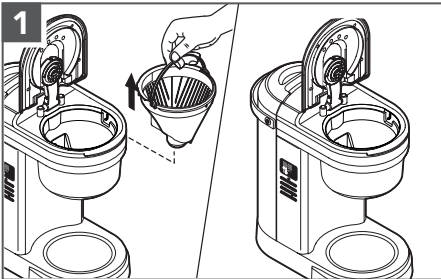
Dishwasher-safe parts, top rack only: Brew Basket and Gold Tone Permanent filter. Wipe the Showerhead with a damp cloth to remove any coffee splashes.



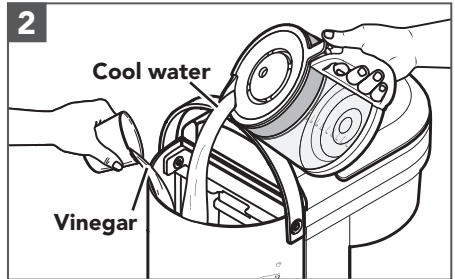
Wash by hand in warm and soapy water. Dry thoroughly: Carafe and Water Tank.

REMOVING MINERAL DEPOSITS WITH VINEGAR

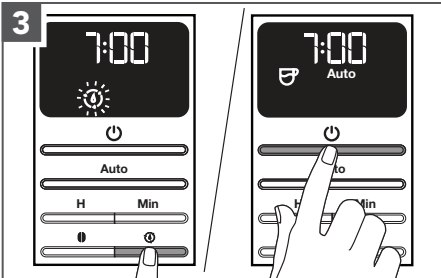
Mineral deposits (scale) from water will build up in the Coffee Maker over the time and impair brewing efficiency and coffee quality. The “Clean icon (🧼)” will flash in display after completing 100 brew cycles. Then, it is time to descale the Coffee Maker.



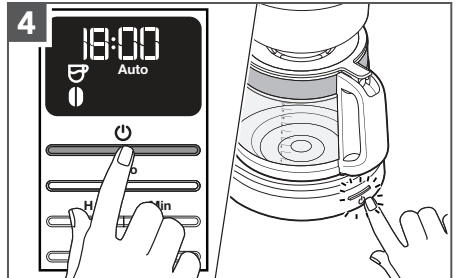
1 Empty the Brew Basket.



2 Fill the Water Tank with 1.4 L (6 cup) vinegar and 1.4 L (6 cup) cool water.



3 Press **🧼** button. Then, press any of the **🔌** buttons to begin the Clean cycle. After the Clean cycle ends (approximately 30 minutes), 3 beeps will sound, and the “Clean icon (🧼)” will turn off.



4 Run 2-3 fresh, cool water-only cycles after the Clean cycle is complete.

TROUBLESHOOTING GUIDE



⚠️ WARNING

Electrical Shock Hazard

Plug into an earthed outlet.

Do not remove an earth prong.

Do not use an adapter.

Do not use an extension cord.

Failure to follow these instructions can result in death, fire, or electrical shock.

Problem	Solution
If the display is not illuminated:	Check if the Coffee Maker is plugged into an earthed outlet. If it is, check the fuse or circuit breaker on the electrical circuit the Coffee Maker is connected to and make sure the circuit is closed.
If only a portion of the water added to the Coffee Maker actually brews:	The Coffee Maker requires immediate descaling. Please refer to the "Care and cleaning" section.
Coffee Maker takes longer than usual to brew:	
If you hear 3 rapid tones:	There is no water in the Water Tank. See the "Filling water for brewing" section.
If "Er1" flashes on the display and you hear 1 tone:	A button may be jammed. Unplug and press each button several times. Plug the Coffee Maker. If "Er1" appears again on the display, repeat this procedure.
If coffee overflows the Brew Basket:	The Brew Basket is not correctly in place. See the "Assembly Of Brew Basket" section.
	Too much coffee ground was placed into the Brew Basket.
	Used both Gold tone filter and paper filter together.
If water exits from the back of the Coffee Maker:	Too much water was poured into the Water Tank.

If the problem is not due to one of the above items, see the "Product warranty and Customer Care" section. Do not return the Coffee Maker to the retailer. Retailers do not provide service.

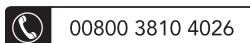
PRODUCT WARRANTY

Length of Warranty:	KitchenAid Will Pay For:	KitchenAid Will Not Pay For:
<p>Europe, Middle East and Africa: 5KCM1208 Two years full warranty from date of purchase.</p>	<p>The replacement parts and repair labour costs to correct defects in materials or workmanship. Service must be provided by an Authorised KitchenAid Service Centre.</p>	<p>A. Repairs when Coffee Maker is used for operations other than normal household drip coffee preparation. B. Damage resulting from accident, alterations, misuse, abuse, or installation/operation not in accordance with local electrical codes.</p>

KITCHENAID DOES NOT ASSUME ANY RESPONSIBILITY FOR INDIRECT DAMAGES.

CUSTOMER CARE

For any questions, or to find the nearest Authorised KitchenAid Service Centre in your country, please find our contact details below.



www.KitchenAid.co.uk
www.KitchenAid.eu

PRODUCT REGISTRATION

Register your new KitchenAid appliance now: <http://www.kitchenaid.eu/register>

