



Questo manuale d'istruzione è fornito da trovaprezzi.it. Scopri tutte le offerte per [LevelOne WAP-8121](#) o cerca il tuo prodotto tra le [migliori offerte di Altri dispositivi di rete](#)



Questo manuale d'istruzione è fornito da trovaprezzi.it. Scopri tutte le offerte per [LevelOne WAP-8121](#) o cerca il tuo prodotto tra le [migliori offerte di Wireless e Bluetooth](#)



# **WAP-8121 / WAP-8122**

## **AC Dual Band Managed PoE Wireless Access Point**

### **User's Manual**

# Contents

<b>Chapter 1 Introduction</b> .....	<b>3</b>
1.1 LED Indicator: .....	3
1.2 AP Interface: .....	3
1.3 Power Supply: .....	3
1.4 AP Installation: .....	4
1.5 Connecting AP with PC .....	4
<b>Chapter 2 Log in the WEB</b> .....	<b>5</b>
<b>Chapter 3 Quickly Configure Wireless AP</b> .....	<b>8</b>
3.1 Gateway Mode: .....	8
3.2 WiFi Repeater and Station Operation Configuration .....	8
3.3 AP Operation Mode: .....	10
3.4 WISP Operation Mode: .....	10
<b>Chapter4 Advanced Setting</b> :.....	<b>12</b>
4.1 Device Status: .....	12
4.2 2.4Ghz/5.8Ghz Wireless Basic Setting: .....	12
4.3 Virtual AP: .....	13
4.4 Access Control .....	13
4.4 Network Setting: .....	14
4.5 Management: .....	14
4.5.1 System Time.....	14
4.5.2 Log: .....	15
4.5.3 Upgrade Firmware .....	15
4.5.4 Settings Management .....	15
4.5.5 Password .....	16
4.5.6 Management under Gateway Mode .....	16
4.5.7 Firewall under Gateway Mode.....	16
4.6 Share Internet and Obtain IP Address Automatically .....	17
<b>Chapter 5 Trouble Shooting</b> : .....	<b>18</b>
<b>Appendix A LICENSE STATEMENT / GPL CODE STATEMENT</b> .....	<b>19</b>

---

## Chapter 1 Introduction

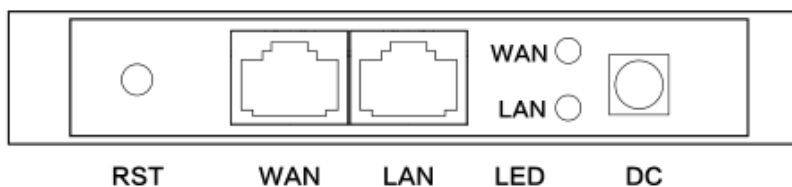
This is the user manual of 1200Mbps Ceiling AP, which will guide you to set and apply the Ceiling AP. It provides a convenient and easy graphical interface for network construction and maintenance person, as well as for a user with no experience.

### 1.1 LED Indicator:

Green: Power Indicator

Blue: WiFi Indicator

### 1.2 AP Interface:



RST: Reset Button, it make AP revert to default data after press it 15 seconds.

WAN: WAN Port, connect with ADSL modem or Internet mainly. It will be LAN port under Wireless AP and WiFi Repeater operation mode

LAN: LAN Port to end users

LED: LED Indicator of WAN port and LAN port

DC: DC power connector

### 1.3 Power Supply:

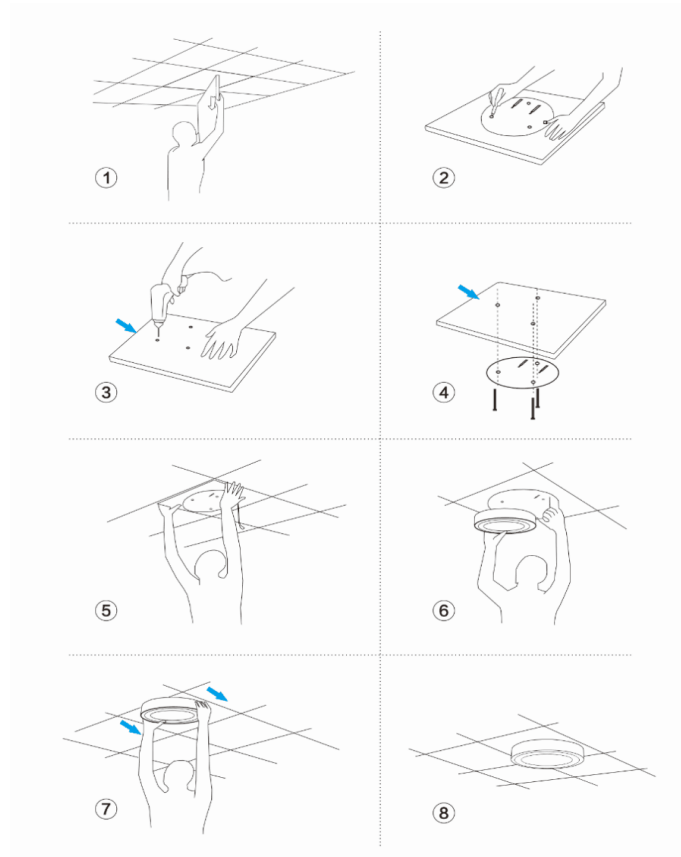
The connection diagram shows as P2, Internet cable from PoE Switch to Ceiling AP's WAN Port, then PC access into ceiling AP wired/wireless.

Pls note, the PD wireless AP support 48V IEEE 802.3at standard PoE, m the PoE switch should comply with 802.3at 48V PoE standard.



P2

## 1.4 AP Installation:



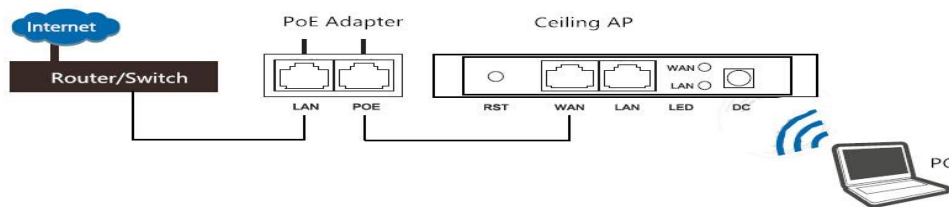
P3 AP installation

## 1.5 Connecting AP with PC

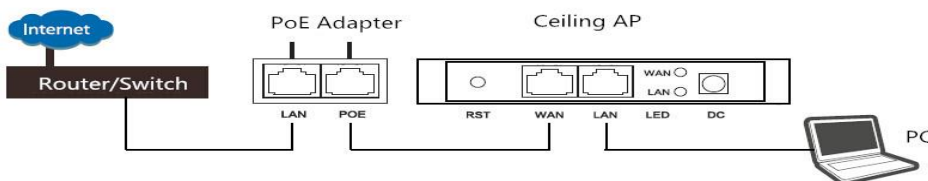
Use can connect the PC with wireless AP by Wireless SSID and LAN cable:

The diagram of wireless connection showed as follow:

Pls note: the default 2.4GSSID is **LevelOne 2.4G**, default 5G SSID is **LevelOne 5G**, SSID's password is **66666666**



The diagram of LAN cable connection showed as follow:

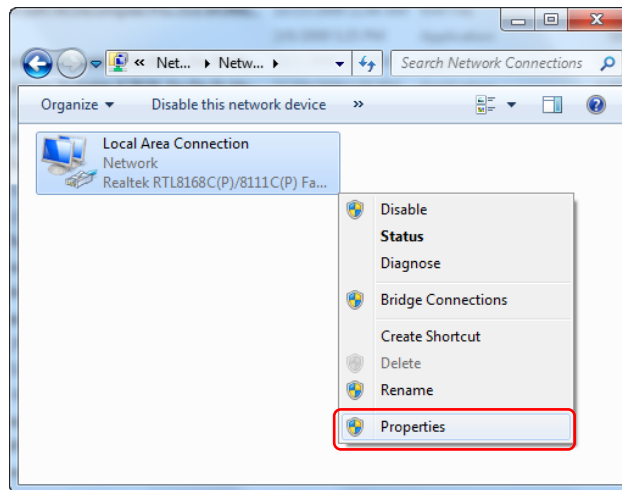


---

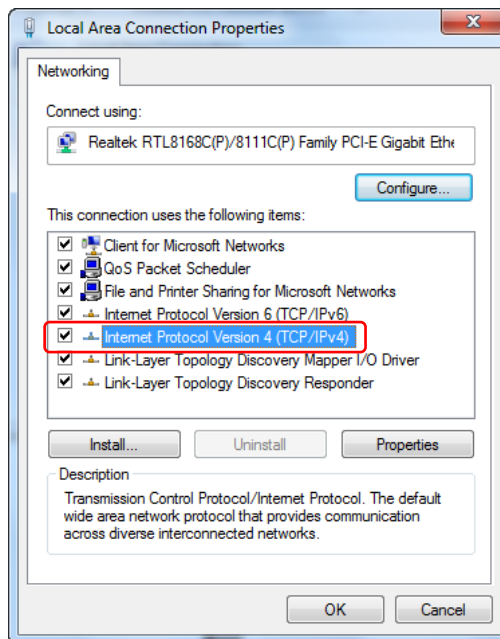
## Chapter 2 Log in the WEB

The necessary information about log in is displayed on the sticker of the product, including the URL, User Name and Pass Word

- 1) Connect the Ceiling AP with computer
- 2) Configure the PC's local connection IP address as 192.168.188.X (X is number from 2 to 252), subnet mask is 255.255.255.0, follow P4 and P5 to finish.

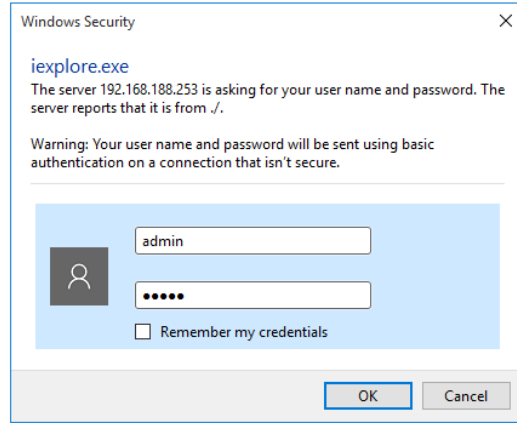


P4 Setting of computer's IP address



P 5 Setting of computer's IP address

3) Input 192.168.188.253 into IE browser, then pop up the login page, the default login user name: Admin, Passwords: admin, pls do following P6



#### P6 Login

4) After login, then P7 Device Status will be showed;

This page will show the AP's default operation mode, channel, connection status, Tx Power Mode, CPU usage, Wireless settings, LAN Setting, AP's Location, AP's hardware/firmware version.



#### P7: Device Status

Quick Setup	System Status	Operation Mode	2.4GHz Wireless	5.8GHz Wireless	Network Setting	Management
2.4GHz Basic	2.4GHz Virtual AP	2.4GHz Access Control	2.4GHz Advanced			
<b>Wireless Advanced Settings</b>						
Country Region	CN	Channel(1-13)				
Fragment Threshold	2346	(256-2346)				
RTS Threshold	2347	(0-2347)				
Ack Timeout Control	0	(0-255)us				
Beacon Interval	100	(100-1000)ms				
Max Client	32	(Range 0-32 0:No limit)				
Coverage Threshold	-90	(-65dBm~-90dBm)				
Preamble Type	<input type="radio"/> Long Preamble	<input checked="" type="radio"/> Short Preamble				
Aggregation	<input type="radio"/> Disabled	<input type="radio"/> Enabled				
Short GI	<input type="radio"/> Disabled	<input type="radio"/> Enabled				
WLAN Partition	<input type="radio"/> Disabled	<input type="radio"/> Enabled				
RF Output Power	<input checked="" type="radio"/> 100%	<input type="radio"/> 75%	<input type="radio"/> 50%	<input type="radio"/> 25%	<input type="radio"/> 12.5%	

### P7.1 RF Output Power

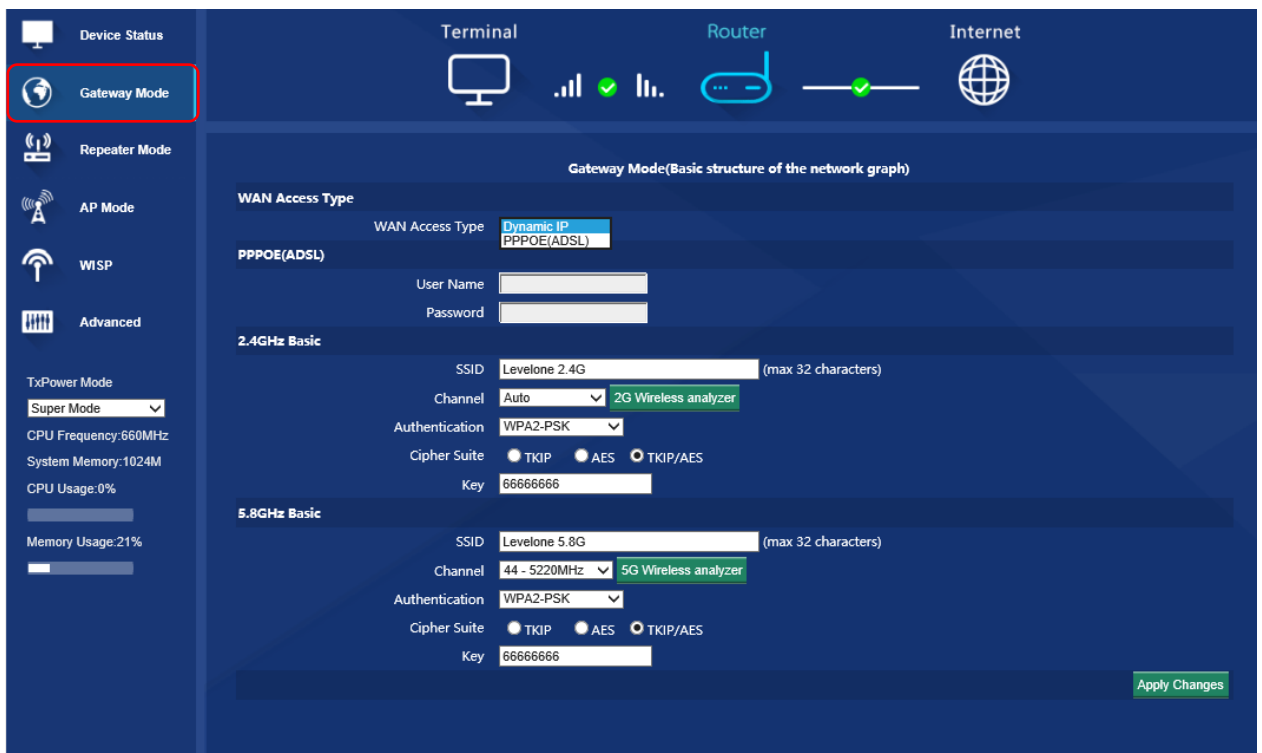


In the Tx Power Mode selection, Super mode stands for 100% of the RF Output Power, Standard mode for 50% of the RF Output Power, Power Saving Mode for 12.5% of the RF Output Power. The RF Output Power can be adjusted accordingly in

## Chapter 3 Quickly Configure Wireless AP

### 3.1 Gateway Mode:

Before Click Gateway mode, confirm your internet will be static IP, PPPoE, or DHCP, then Click “Gateway Mode” under following picture and choose the right WAN access type. When you need to PPPOE please enter the user name and password the ISP provides . Then input the SSID, Channel and Authentication of the AP as you like, after that “Apply Changes”



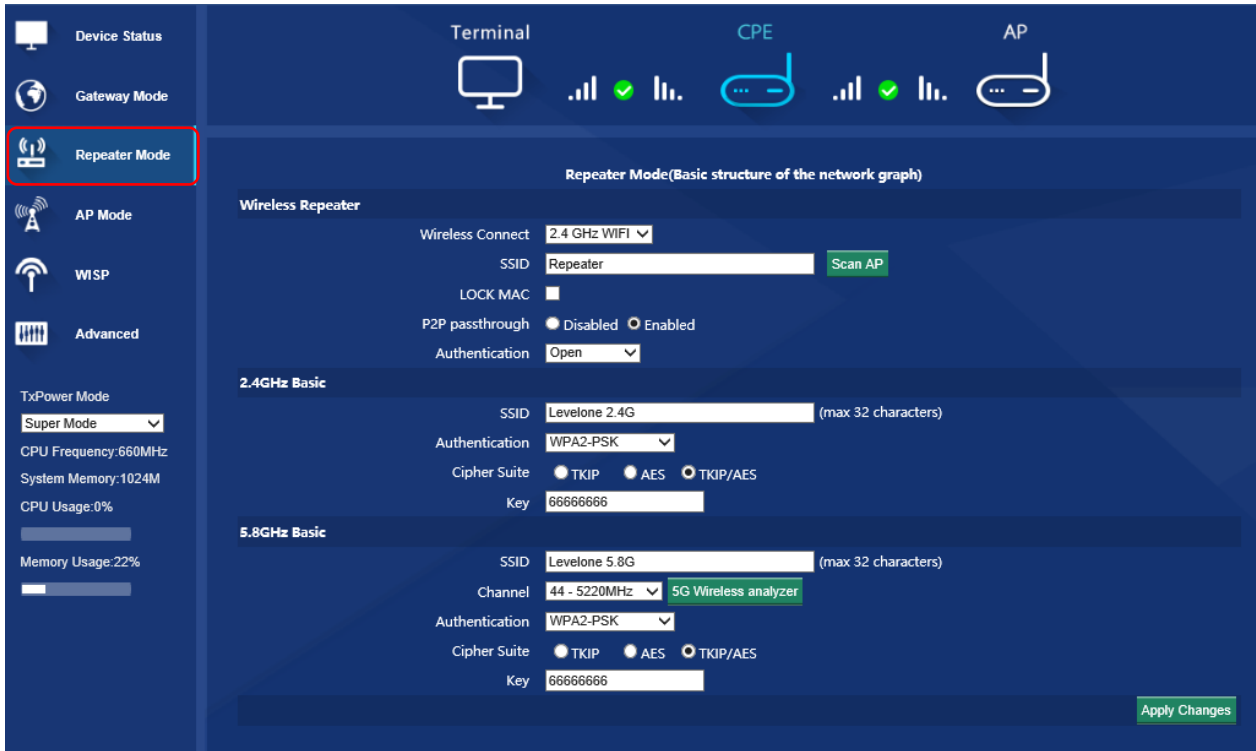
P8 Gateway Mode

### 3.2 WiFi Repeater and Station Operation Configuration

WiFi Repeater: Mean will bridge the exist wireless AP’s signal, then transmit it with long wifi range.

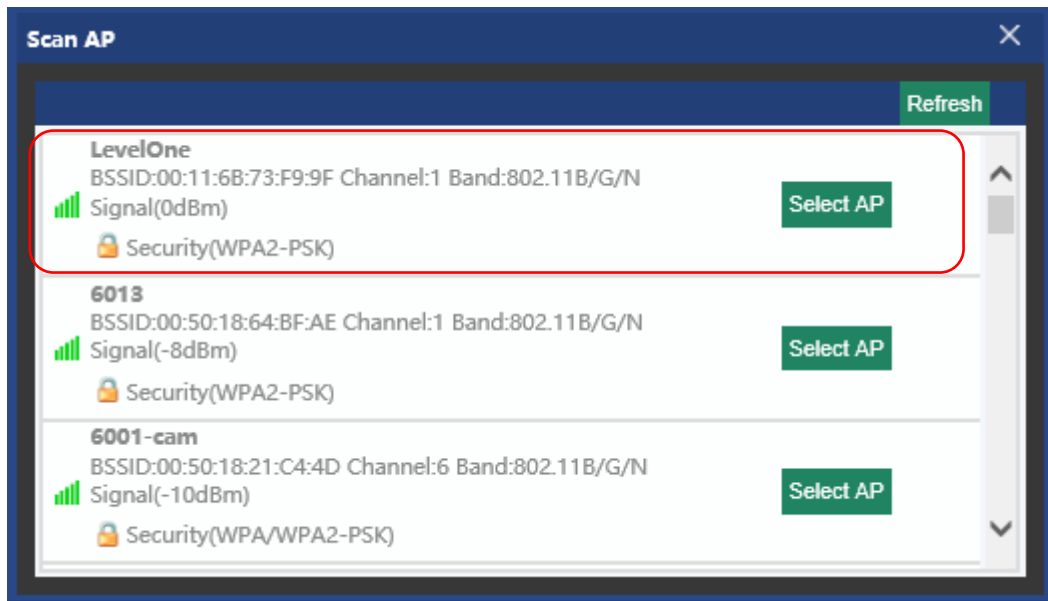
A. Login the Web management page, Choose the wireless connection as 2.4GHz WiFi or 5.8GHz WiFi, then click “Repeater Mode”, then “Scan AP” to find the AP you want to repeat.

Pls note: When choose 2.4GHz WiFi, mean can bridge the exist 2.4GHz Wireless AP; When choose 5.8GHz WiFi, mean can bridge the exist 5.8GHz Wireless AP.



P9 Repeater Mode

B. Select the AP's SSID want to bridge, take **LevelOne** for example.

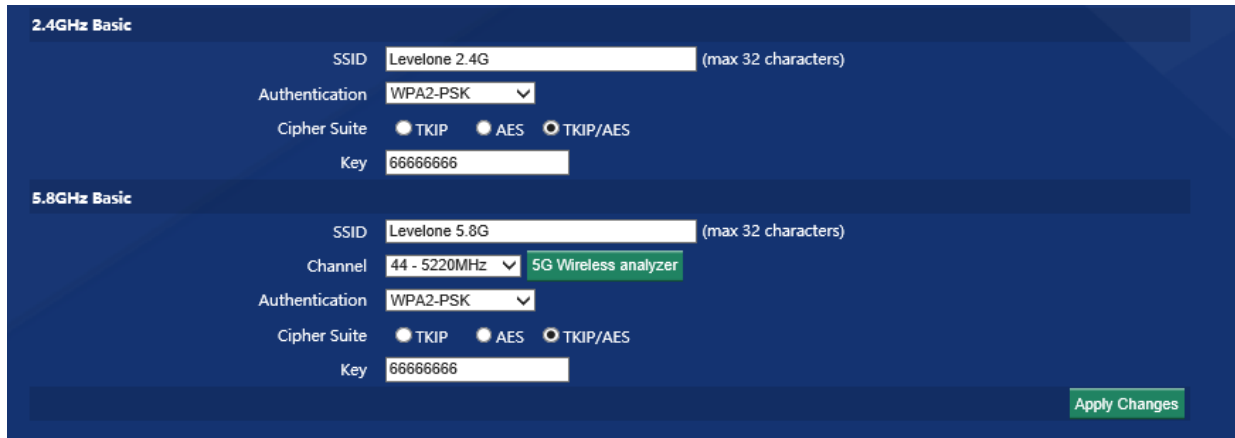


P10 Select AP



If your computer can't pop up this window, pls check your IE explorer and see whether it is blocked already. And if this Wireless AP can't scan any SSID, pls check if there are 5G

C. input the SSID/password for 2.4GHz or 5.8GHz WiFi which will be broadcast. Then "apply changes" to finish.

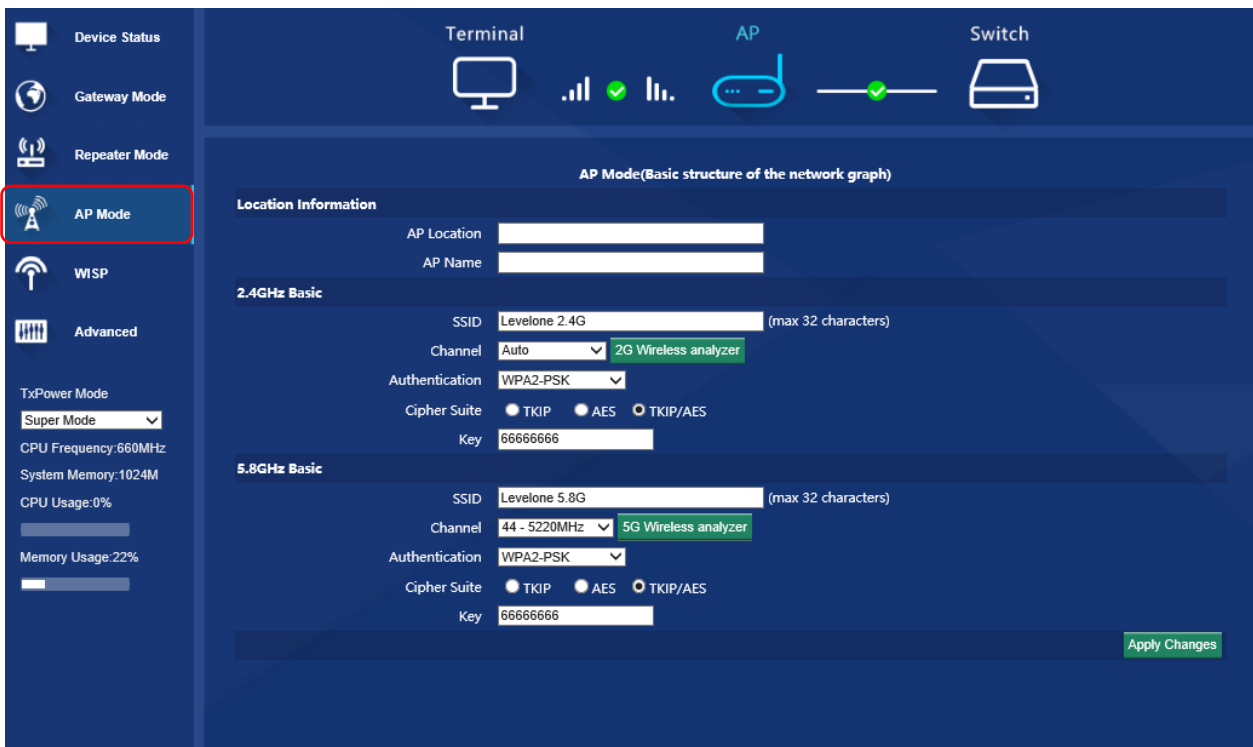


### P11 Repeater Mode

## 3.3 AP Operation Mode:

AP mode is for wifi coverage mainly, plug and play, very easy in setting as follow:

Click the “AP mode”, set AP Location and name if need, after that to configure the Wireless Basic for 2.4Ghz and 5.8Ghz, such as SSID, password, channel, Then apply.

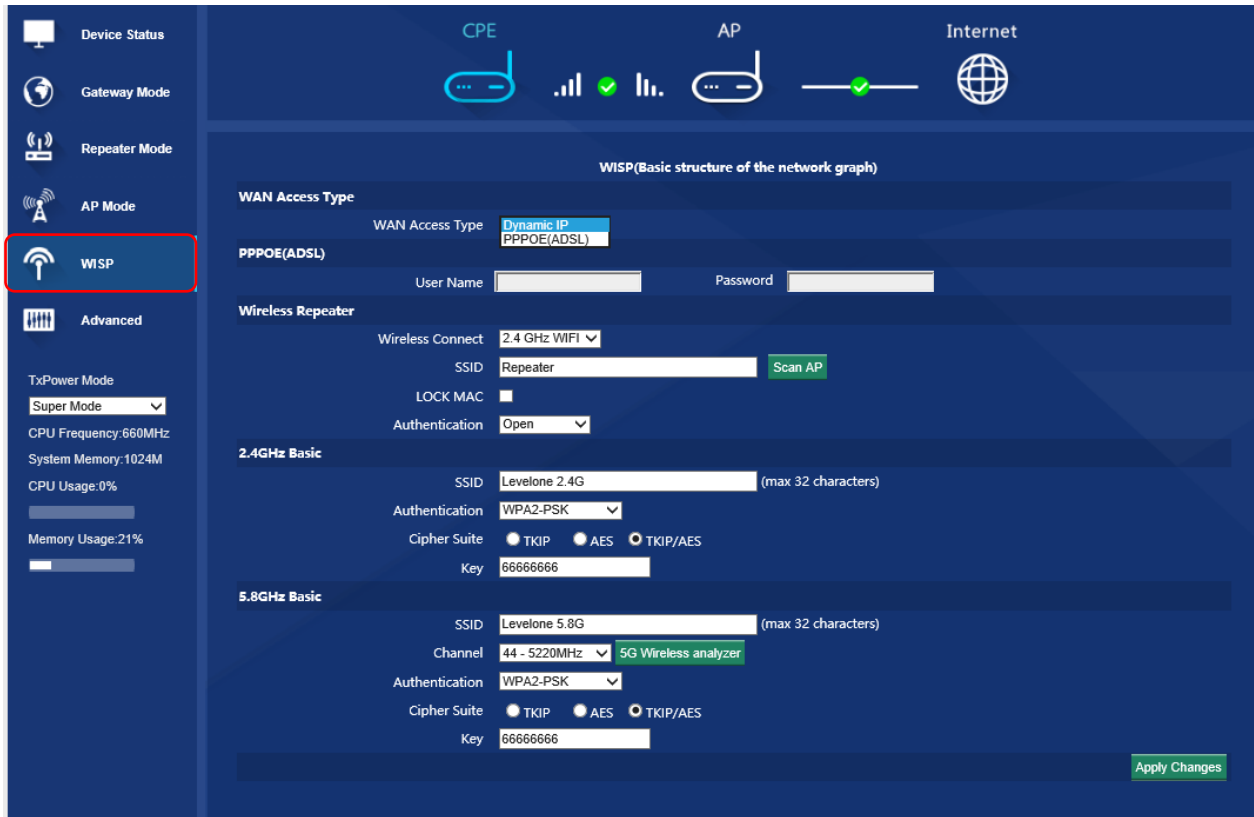


## 3.4 WISP Operation Mode:

Before apply WISP operation mode, pls confirm the internet will be dynamic IP or PPPoE:

Click ”WISP” mode in Wizard, then will pop up the configure page, then choose the WAN Access Type and place correct information as in the Gateway Mode. Then confirm the bridge networking is 2.4GHz WiFi or 5.8GHz WiFi,

after that “scan AP” to choose the SSID you want to bridge and input the password, then fill the SSID/password, channel will be broadcast, “Apply Changes” to finish.



P12 WISP mode

## Chapter4 Advanced Setting:

In advanced setting, user can check the ceiling AP's firmware version, working status, 2.4G/5.8Ghz wireless, LAN Status, upgrade firmware, Reset...

### 4.1 Device Status:

This page will show basic parameters for this unit, like firmware version,hardware version,etc;

System home	System Status	Operation Mode	2.4GHz Wireless	5.8GHz Wireless	Network Setting	Management
System Status	2.4GHz Status	5.8GHz Status	LAN Status			
<b>Status</b>						
Software Version		LevelOne-WAP-8122-V1-B20160926094247				
Hardware Version		V1.0				
System uptime		0Day 22H 23M 51S				

### 4.2 2.4Ghz/5.8Ghz Wireless Basic Setting:

On this page, users can configure the basic wireless settings freely, including the SSID, Security,Band, Hidden SSID and channel width. You can click the Wireless analyzer to select the best channel.

System home	System Status	Operation Mode	2.4GHz Wireless	5.8GHz Wireless	Network Setting	Management
2.4GHz Basic	2.4GHz Virtual AP	2.4GHz Access Control	2.4GHz Advanced			
<b>Wireless Basic Settings</b>						
Status		<input type="radio"/> Disabled <input checked="" type="radio"/> Enabled				
Mode		AP				
SSID		Levelone 2.4G (max 32 characters)				
Band		802.11B/G/N				
Broadcast SSID		<input type="radio"/> Disabled <input checked="" type="radio"/> Enabled				
WMM		<input type="radio"/> Disabled <input checked="" type="radio"/> Enabled				
<b>Channel</b>						
Channel Width		20MHz				
Channel Number		Auto <a href="#">2G Wireless analyzer</a>				
<b>Security</b>						
Authentication		WPA2-PSK				
Cipher Suite		<input type="radio"/> TKIP <input type="radio"/> AES <input checked="" type="radio"/> TKIP/AES				
Key		66666666				
<a href="#">Apply Changes</a>						

System home	System Status	Operation Mode	2.4GHz Wireless	5.8GHz Wireless	Network Setting	Management
5.8GHz Basic	5.8GHz Virtual AP	5.8GHz Access Control	5.8GHz Advanced			
<b>Wireless Basic Settings</b>						
Status		<input type="radio"/> Disabled <input checked="" type="radio"/> Enabled				
Mode		AP				
SSID		Levelone 5.8G (max 32 characters)				
Band		802.11AN/AC				
Broadcast SSID		<input type="radio"/> Disabled <input checked="" type="radio"/> Enabled				
WMM		<input type="radio"/> Disabled <input checked="" type="radio"/> Enabled				
<b>Channel</b>						
Channel Width		40MHz				
Channel Number		44 - 5220MHz <a href="#">5G Wireless analyzer</a>				
<b>Security</b>						
Authentication		WPA2-PSK				
Cipher Suite		<input type="radio"/> TKIP <input type="radio"/> AES <input checked="" type="radio"/> TKIP/AES				
Key		66666666				
<a href="#">Apply Changes</a>						

### 4.3 Virtual AP:

There are 3 virtual AP in 2.4Ghz and 5.8Ghz individually, (total 6 virtual AP), if need virtual SSID, then users can configure basic settings showed in following picture:

Status	SSID	Broadcast SSID	WMM	Security	Apply Changes	Edit	Reset
📶(Off)	VAP0	Enabled	Enabled	Open		•	
📶(Off)	VAP1	Enabled	Enabled	Open		•	
📶(Off)	VAP2	Enabled	Enabled	Open		•	

Status	SSID	Broadcast SSID	WMM	Security	Apply Changes	Edit	Reset
📶(Off)	VAP0	Enabled	Enabled	Open		•	
📶(Off)	VAP1	Enabled	Enabled	Open		•	
📶(Off)	VAP2	Enabled	Enabled	Open		•	

### 4.4 Access Control

Control the end users like the white list and black list.

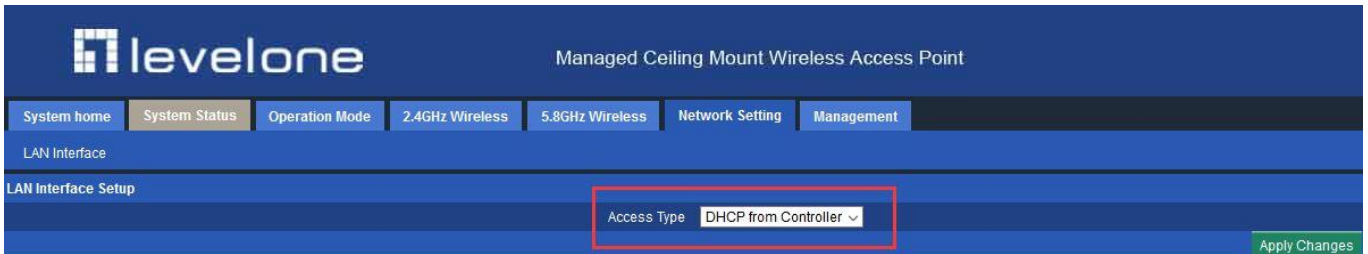
Wireless Access Control Mode: **Allow All**

---

## 4.4 Network Setting:

In this page, users can set up the basic LAN setting

Under AP Mode, DHCP from Controller means you are allowing the controller to control the IP of the AP (originally 192.168.188.253) . Therefore the controller can find and manage the AP.



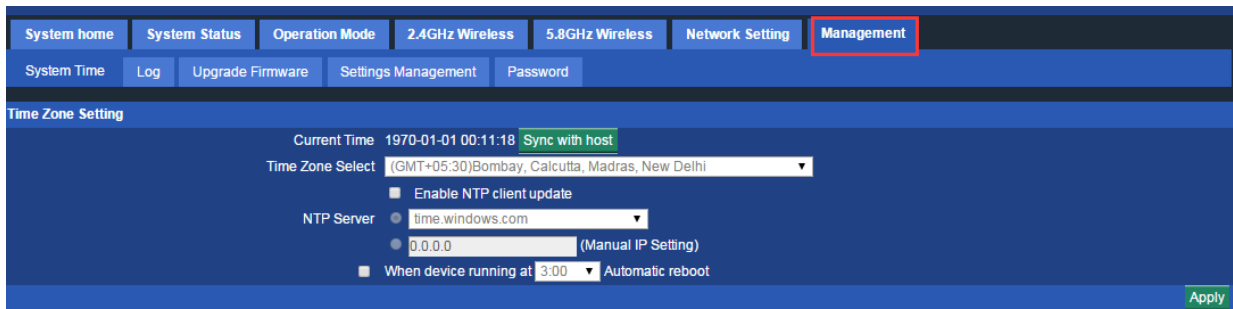
When you choose Fixed IP , that means the AP is having the right to decide its own IP instead of being totally controlled by controller. However, when the IP Address is in the same network segment as controller's, can the controller find and manage the AP. Take one for example, when controller's IP is 192.168.10.1, and only when AP's IP is 192.168.10.X can the controller find and manage the AP.



## 4.5 Management:

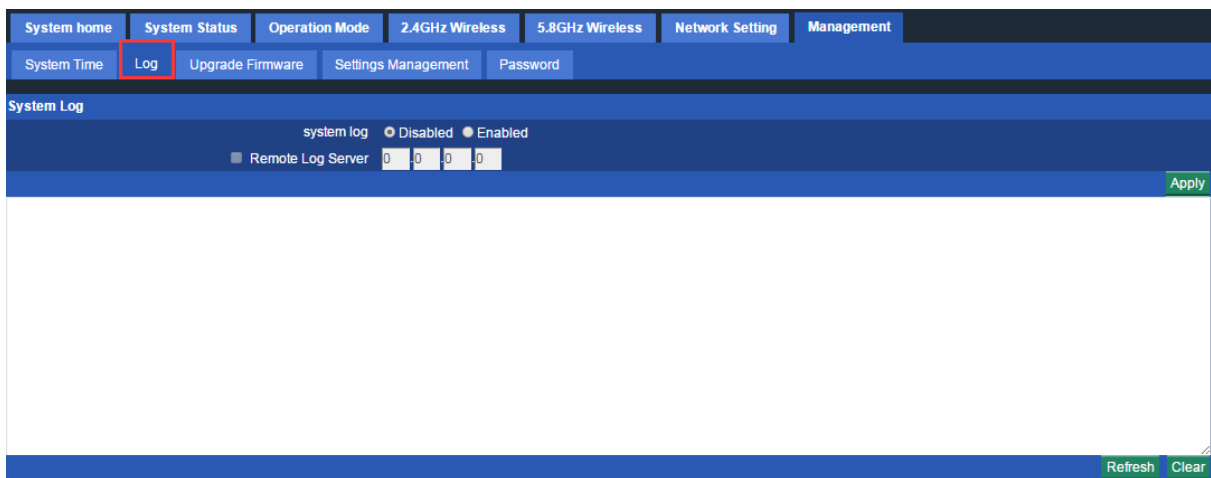
### 4.5.1 System Time

In this part, you can set the time of the device. NTP server can only work under Gateway mode and WISP Mode. When NTP server is chosen, Sync with host will be unavailable. When it connects with controller click Sync with Host, it will get time from controller rather than from PC.



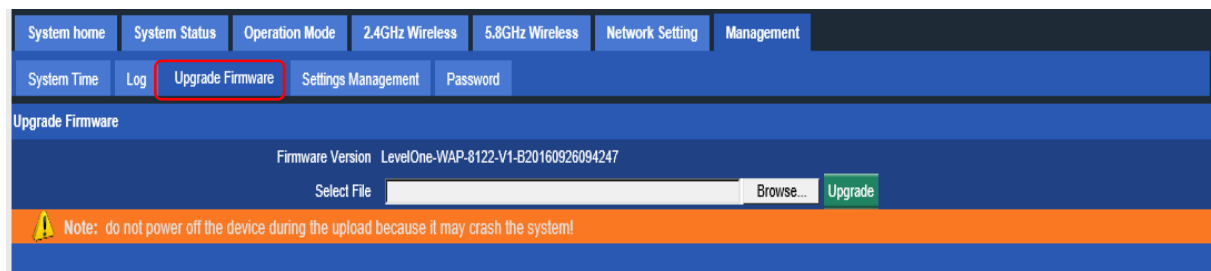
## 4.5.2 Log:

Log info will help the technicians to diagnose the problems of the device



## 4.5.3 Upgrade Firmware

After upgrading the firmware please reset the device.

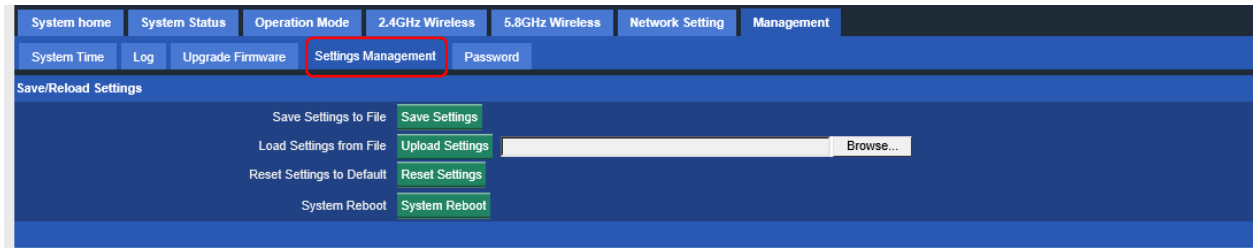


## 4.5.4 Settings Management

Save settings will help you to save the current configuration. When you have reset the device, you can also upload the the settings you saved before.

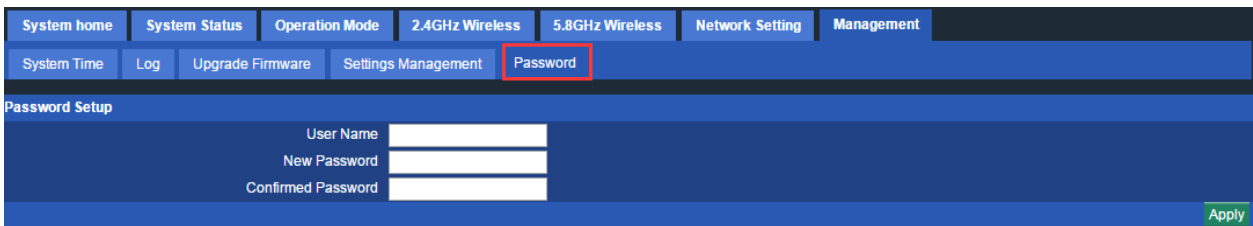
You can click Reset Settings to reset the device instead of pressing reset button.

You are able to reboot the device through System Reboot



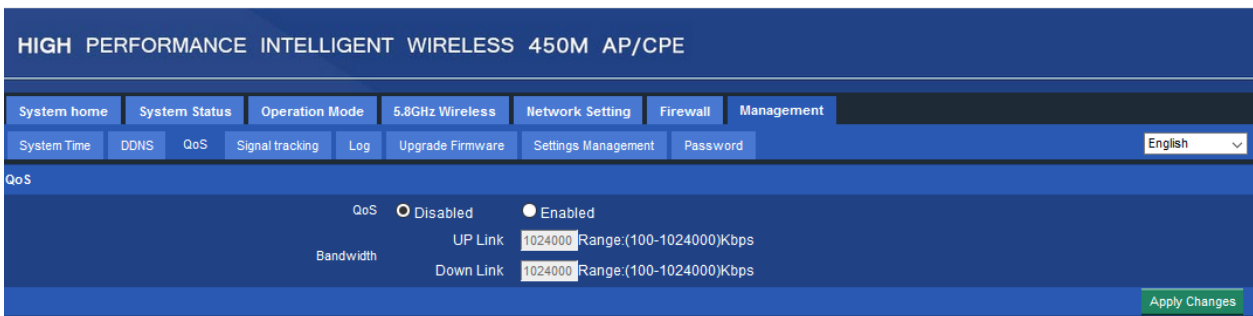
### 4.5.5 Password

You can change the System Password here. We strongly recommend you to change the system password for security reason.



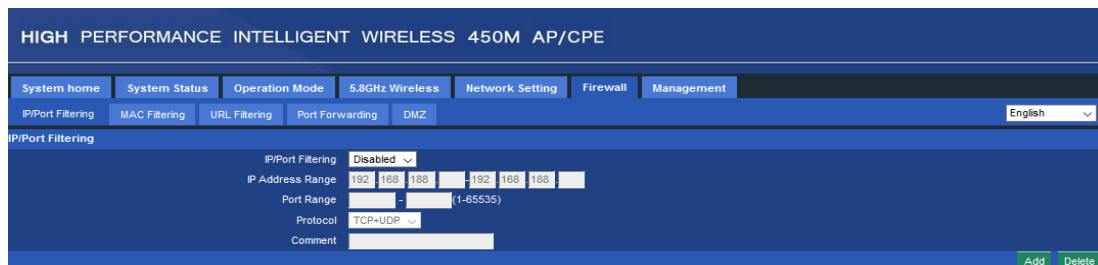
### 4.5.6 Management under Gateway Mode

DDNS function is added in this mode. And the QoS function allow you the limit the uplink and downlink speed.



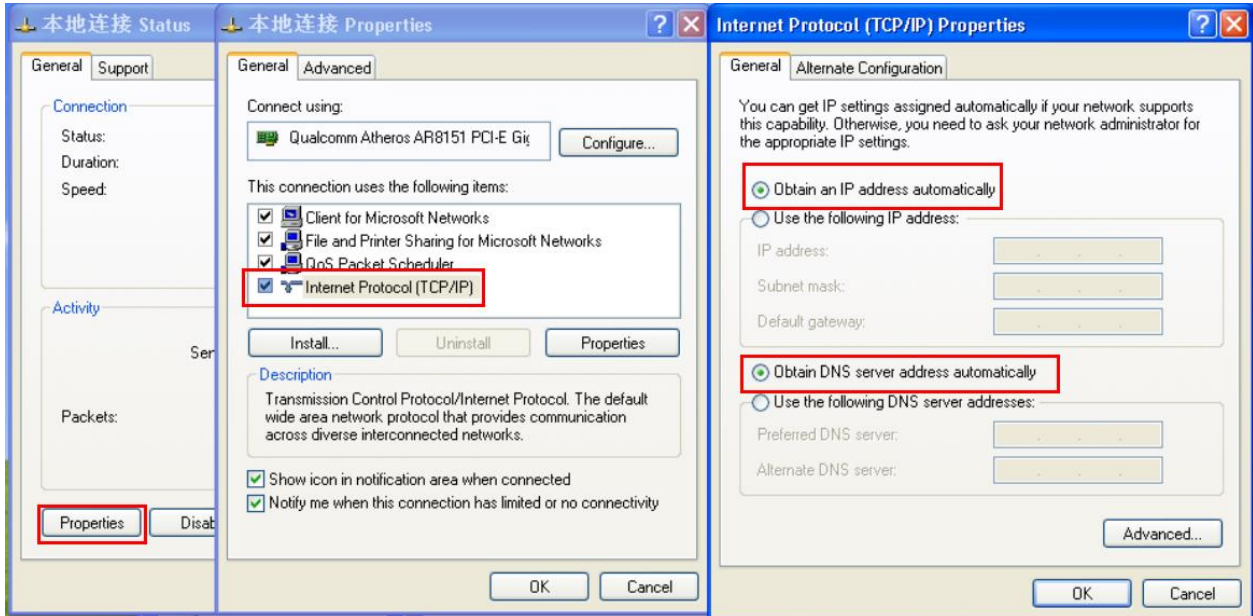
### 4.5.7 Firewall under Gateway Mode

Use the firewall to secure your network as you wish.



## 4.6 Share Internet and Obtain IP Address Automatically

Set computer's TCP/IP as Obtain an IP address automatically, Obtain DNS server address automatically as following picture showed. the computer will obtain the IP address from router or base station to get Internet.



## Chapter 5 Troubleshooting:

### F 1 The Failure phenomenon and solution

Failure phenomenon	Solution
SYS Indicator off	Pls make sure the PoE module connection is right. POE Port connect with AP, LAN port connect with computer
Can't land to Wireless AP through Web page	Pls check the IP address of computer and Wireless AP to see whether they are in same networking segment, The method is click "start"- "Run" input "cmd", ping 192.168.188.253 to test the Wireless AP connectivity. Reset Wireless AP and load it again; Pls make sure the IP address 192.168.188.253 is not occupied by other device in Wireless AP's networking; Check computer and cable problem, recommend to use 10/100M UTP unshielded cable; Clean up Arp binding from "Start" - "Run" input "cmd" arp -d Clean the IE Brower's temporary files and Cache file.
Wireless AP can't connect with AP (the status display unconnected)	Try to scan the available wireless networking again; Make sure the Wireless AP's wireless standard is correct; (2.4Ghz signal should connect 2.4Ghz, 5.8Ghz signal should connect 5.8Ghz signal; ) The Security and passwords are matched between Wireless AP and AP; The signal strength of AP is too weak to connect, should be more than -75dBm;
Can't scan the wireless AP	Scan it several times more; If using 5Ghz to scan, please make sure there are 5G signal existed. Reset the Wireless AP, scan it again after Wireless AP restart;
The connection of Wireless AP and AP is success, but the computer can't share internet	Pls Check the computer's IP address and DNS setting. If it is dynamin, set the network card as automatically obtain. If it is static IP, pls contact with ISP for correct IP address and DNS address.
How to Reset Wireless AP	Press the "Reset" button more than 15 seconds after power on. The Wireless AP will restore factory default after the Wireless AP restart.

---

# **Appendix A LICENSE STATEMENT / GPL CODE STATEMENT**

This product resp. the here

(<http://global.level1.com/downloads.php?action=init>) for

downloading offered software includes software code developed by third parties, including software code subject to the GNU General Public License Version 2 (“GPLv2”) and GNU Lesser General Public License 2.1 („LGPLv2.1“).

## **WRITTEN OFFER FOR GPL/LGPL SOURCE CODE**

We will provide everyone upon request the applicable GPLv2 and LGPLv2.1 source code files via CDROM or similar storage medium for a nominal cost to cover shipping and media charges as allowed under the GPLv2 and LGPLv2.1. This offer is valid for 3 years. GPLv2 and LGPLv2 inquiries: Please direct all GPL and LGPL inquiries to the following address:

Digital Data Communications GmbH

Zeche-Norm-Str. 25

44319 Dortmund

Deutschland

---

Phone: [+49 231 9075 - 0](tel:+492319075)

Fax: [+49 231 9075 - 184](tel:+492319075184)

Email: [support@level1.com](mailto:support@level1.com)

Web: [www.level1.com](http://www.level1.com)

## **NO WARRANTY**

This program is distributed in the hope that it will be useful, but WITHOUT ANY WARRANTY; without even the implied warranty of MERCHANTABILITY or FITNESS FOR A PARTICULAR PURPOSE. See the GNU General Public License for more details. IN NO EVENT UNLESS REQUIRED BY APPLICABLE LAW OR AGREED TO IN WRITING WILL ANY COPYRIGHT HOLDER, OR ANY OTHER PARTY WHO MAY MODIFY AND/OR REDISTRIBUTE THE PROGRAM AS PERMITTED ABOVE, BE LIABLE TO YOU FOR DAMAGES, INCLUDING ANY GENERAL, SPECIAL, INCIDENTAL OR CONSEQUENTIAL DAMAGES ARISING OUT OF THE USE OR INABILITY TO USE THE PROGRAM (INCLUDING BUT NOT LIMITED TO LOSS OF DATA OR DATA BEING RENDERED INACCURATE OR LOSSES SUSTAINED BY YOU OR THIRD PARTIES OR A FAILURE OF

---

THE PROGRAM TO OPERATE WITH ANY OTHER PROGRAMS), EVEN IF SUCH HOLDER OR OTHER PARTY HAS BEEN ADVISED OF THE POSSIBILITY OF SUCH DAMAGES.

# GNU GENERAL PUBLIC LICENSE

Version 2, June 1991

Copyright (C) 1989, 1991 Free Software Foundation, Inc.  
51 Franklin Street, Fifth Floor, Boston, MA 02110-1301, USA

Everyone is permitted to copy and distribute verbatim copies of this license document, but changing it is not allowed.

## Preamble

The licenses for most software are designed to take away your freedom to share and change it. By contrast, the GNU General Public License is intended to guarantee your freedom to share and change free software--to make sure the software is free for all its users. This General Public License applies to most of the Free Software Foundation's software and to any other program whose authors commit to using it. (Some other Free Software Foundation software is covered by the GNU Lesser General Public License instead.) You can apply it to your programs, too.

When we speak of free software, we are referring to freedom, not price. Our General Public Licenses are designed to make sure that you have the freedom to distribute copies of free software (and

---

charge for this service if you wish), that you receive source code or can get it if you want it, that you can change the software or use pieces of it in new free programs; and that you know you can do these things.

To protect your rights, we need to make restrictions that forbid anyone to deny you these rights or to ask you to surrender the rights. These restrictions translate to certain responsibilities for you if you distribute copies of the software, or if you modify it.

For example, if you distribute copies of such a program, whether gratis or for a fee, you must give the recipients all the rights that you have. You must make sure that they, too, receive or can get the source code. And you must show them these terms so they know their rights.

We protect your rights with two steps: (1) copyright the software, and (2) offer you this license which gives you legal permission to copy, distribute and/or modify the software.

Also, for each author's protection and ours, we want to make certain that everyone understands that there is no warranty for this free software. If the software is modified by someone else and passed on, we want its recipients to know that what they have is not the original, so that any problems introduced by others will not reflect on the original authors' reputations.

---

Finally, any free program is threatened constantly by software patents. We wish to avoid the danger that redistributors of a free program will individually obtain patent licenses, in effect making the program proprietary. To prevent this, we have made it clear that any patent must be licensed for everyone's free use or not licensed at all.

The precise terms and conditions for copying, distribution and modification follow.

## **TERMS AND CONDITIONS FOR COPYING, DISTRIBUTION AND MODIFICATION**

0. This License applies to any program or other work which contains a notice placed by the copyright holder saying it may be distributed under the terms of this General Public License. The "Program", below, refers to any such program or work, and a "work based on the Program" means either the Program or any derivative work under copyright law: that is to say, a work containing the Program or a portion of it, either verbatim or with modifications and/or translated into another language. (Hereinafter, translation is included without limitation in the term "modification".) Each licensee is addressed as "you".

---

Activities other than copying, distribution and modification are not covered by this License; they are outside its scope. The act of running the Program is not restricted, and the output from the Program is covered only if its contents constitute a work based on the Program (independent of having been made by running the Program). Whether that is true depends on what the Program does.

**1.** You may copy and distribute verbatim copies of the Program's source code as you receive it, in any medium, provided that you conspicuously and appropriately publish on each copy an appropriate copyright notice and disclaimer of warranty; keep intact all the notices that refer to this License and to the absence of any warranty; and give any other recipients of the Program a copy of this License along with the Program.

You may charge a fee for the physical act of transferring a copy, and you may at your option offer warranty protection in exchange for a fee.

**2.** You may modify your copy or copies of the Program or any portion of it, thus forming a work based on the Program, and copy and distribute such modifications or work under the terms of Section 1 above, provided that you also meet all of these conditions:

---

**a)** You must cause the modified files to carry prominent notices stating that you changed the files and the date of any change.

**b)** You must cause any work that you distribute or publish, that in whole or in part contains or is derived from the Program or any part thereof, to be licensed as a whole at no charge to all third parties under the terms of this License.

**c)** If the modified program normally reads commands interactively when run, you must cause it, when started running for such interactive use in the most ordinary way, to print or display an announcement including an appropriate copyright notice and a notice that there is no warranty (or else, saying that you provide a warranty) and that users may redistribute the program under these conditions, and telling the user how to view a copy of this License. (Exception: if the Program itself is interactive but does not normally print such an announcement, your work based on the Program is not required to print an announcement.)

These requirements apply to the modified work as a whole. If identifiable sections of that work are not derived from the Program, and can be reasonably considered independent and separate

---

works in themselves, then this License, and its terms, do not apply to those sections when you distribute them as separate works. But when you distribute the same sections as part of a whole which is a work based on the Program, the distribution of the whole must be on the terms of this License, whose permissions for other licensees extend to the entire whole, and thus to each and every part regardless of who wrote it.

Thus, it is not the intent of this section to claim rights or contest your rights to work written entirely by you; rather, the intent is to exercise the right to control the distribution of derivative or collective works based on the Program.

In addition, mere aggregation of another work not based on the Program with the Program (or with a work based on the Program) on a volume of a storage or distribution medium does not bring the other work under the scope of this License.

**3.** You may copy and distribute the Program (or a work based on it, under Section 2) in object code or executable form under the terms of Sections 1 and 2 above provided that you also do one of the following:

we use this doubled UL to get the sub-sections indented, while making the bullets as unobvious as possible.

---

**a)** Accompany it with the complete corresponding machine-readable source code, which must be distributed under the terms of Sections 1 and 2 above on a medium customarily used for software interchange; or,

**b)** Accompany it with a written offer, valid for at least three years, to give any third party, for a charge no more than your cost of physically performing source distribution, a complete machine-readable copy of the corresponding source code, to be distributed under the terms of Sections 1 and 2 above on a medium customarily used for software interchange; or,

**c)** Accompany it with the information you received as to the offer to distribute corresponding source code. (This alternative is allowed only for noncommercial distribution and only if you received the program in object code or executable form with such an offer, in accord with Subsection b above.)

The source code for a work means the preferred form of the work for making modifications to it. For an executable work, complete source code means all the source code for all modules it contains, plus any associated interface definition files, plus the scripts used to control compilation and installation of the executable. However,

---

as a special exception, the source code distributed need not include anything that is normally distributed (in either source or binary form) with the major components (compiler, kernel, and so on) of the operating system on which the executable runs, unless that component itself accompanies the executable.

If distribution of executable or object code is made by offering access to copy from a designated place, then offering equivalent access to copy the source code from the same place counts as distribution of the source code, even though third parties are not compelled to copy the source along with the object code.

**4.** You may not copy, modify, sublicense, or distribute the Program except as expressly provided under this License. Any attempt otherwise to copy, modify, sublicense or distribute the Program is void, and will automatically terminate your rights under this License. However, parties who have received copies, or rights, from you under this License will not have their licenses terminated so long as such parties remain in full compliance.

**5.** You are not required to accept this License, since you have not signed it. However, nothing else grants you permission to modify or distribute the Program or its derivative works. These actions are prohibited by law if you do not accept this License. Therefore, by modifying or distributing the Program (or any work based on the

---

Program), you indicate your acceptance of this License to do so, and all its terms and conditions for copying, distributing or modifying the Program or works based on it.

**6.** Each time you redistribute the Program (or any work based on the Program), the recipient automatically receives a license from the original licensor to copy, distribute or modify the Program subject to these terms and conditions. You may not impose any further restrictions on the recipients' exercise of the rights granted herein. You are not responsible for enforcing compliance by third parties to this License.

**7.** If, as a consequence of a court judgment or allegation of patent infringement or for any other reason (not limited to patent issues), conditions are imposed on you (whether by court order, agreement or otherwise) that contradict the conditions of this License, they do not excuse you from the conditions of this License. If you cannot distribute so as to satisfy simultaneously your obligations under this License and any other pertinent obligations, then as a consequence you may not distribute the Program at all. For example, if a patent license would not permit royalty-free redistribution of the Program by all those who receive copies directly or indirectly through you, then the only way you could

---

satisfy both it and this License would be to refrain entirely from distribution of the Program.

If any portion of this section is held invalid or unenforceable under any particular circumstance, the balance of the section is intended to apply and the section as a whole is intended to apply in other circumstances.

It is not the purpose of this section to induce you to infringe any patents or other property right claims or to contest validity of any such claims; this section has the sole purpose of protecting the integrity of the free software distribution system, which is implemented by public license practices. Many people have made generous contributions to the wide range of software distributed through that system in reliance on consistent application of that system; it is up to the author/donor to decide if he or she is willing to distribute software through any other system and a licensee cannot impose that choice.

This section is intended to make thoroughly clear what is believed to be a consequence of the rest of this License.

**8.** If the distribution and/or use of the Program is restricted in certain countries either by patents or by copyrighted interfaces, the original copyright holder who places the Program under this License may add an explicit geographical distribution limitation

---

excluding those countries, so that distribution is permitted only in or among countries not thus excluded. In such case, this License incorporates the limitation as if written in the body of this License.

**9.** The Free Software Foundation may publish revised and/or new versions of the General Public License from time to time. Such new versions will be similar in spirit to the present version, but may differ in detail to address new problems or concerns.

Each version is given a distinguishing version number. If the Program specifies a version number of this License which applies to it and "any later version", you have the option of following the terms and conditions either of that version or of any later version published by the Free Software Foundation. If the Program does not specify a version number of this License, you may choose any version ever published by the Free Software Foundation.

**10.** If you wish to incorporate parts of the Program into other free programs whose distribution conditions are different, write to the author to ask for permission. For software which is copyrighted by the Free Software Foundation, write to the Free Software Foundation; we sometimes make exceptions for this. Our decision will be guided by the two goals of preserving the free status of all derivatives of our free software and of promoting the sharing and reuse of software generally.

---

## **NO WARRANTY**

**11.** BECAUSE THE PROGRAM IS LICENSED FREE OF CHARGE, THERE IS NO WARRANTY FOR THE PROGRAM, TO THE EXTENT PERMITTED BY APPLICABLE LAW. EXCEPT WHEN OTHERWISE STATED IN WRITING THE COPYRIGHT HOLDERS AND/OR OTHER PARTIES PROVIDE THE PROGRAM "AS IS" WITHOUT WARRANTY OF ANY KIND, EITHER EXPRESSED OR IMPLIED, INCLUDING, BUT NOT LIMITED TO, THE IMPLIED WARRANTIES OF MERCHANTABILITY AND FITNESS FOR A PARTICULAR PURPOSE. THE ENTIRE RISK AS TO THE QUALITY AND PERFORMANCE OF THE PROGRAM IS WITH YOU. SHOULD THE PROGRAM PROVE DEFECTIVE, YOU ASSUME THE COST OF ALL NECESSARY SERVICING, REPAIR OR CORRECTION.

**12.** IN NO EVENT UNLESS REQUIRED BY APPLICABLE LAW OR AGREED TO IN WRITING WILL ANY COPYRIGHT HOLDER, OR ANY OTHER PARTY WHO MAY MODIFY AND/OR REDISTRIBUTE THE PROGRAM AS PERMITTED ABOVE, BE LIABLE TO YOU FOR DAMAGES, INCLUDING ANY GENERAL, SPECIAL, INCIDENTAL OR CONSEQUENTIAL DAMAGES ARISING OUT OF THE USE OR INABILITY TO USE THE

---

PROGRAM (INCLUDING BUT NOT LIMITED TO LOSS OF DATA OR DATA BEING RENDERED INACCURATE OR LOSSES SUSTAINED BY YOU OR THIRD PARTIES OR A FAILURE OF THE PROGRAM TO OPERATE WITH ANY OTHER PROGRAMS), EVEN IF SUCH HOLDER OR OTHER PARTY HAS BEEN ADVISED OF THE POSSIBILITY OF SUCH DAMAGES.

## **END OF TERMS AND CONDITIONS**

### **How to Apply These Terms to Your New Programs**

If you develop a new program, and you want it to be of the greatest possible use to the public, the best way to achieve this is to make it free software which everyone can redistribute and change under these terms.

To do so, attach the following notices to the program. It is safest to attach them to the start of each source file to most effectively convey the exclusion of warranty; and each file should have at least the "copyright" line and a pointer to where the full notice is found.

```
one line to give the program's name and an idea of what it does.  
Copyright (C) yyyy name of author
```

```
This program is free software; you can redistribute it and/or  
modify it under the terms of the GNU General Public License  
as published by the Free Software Foundation; either version 2
```

---

of the License, or (at your option) any later version.

This program is distributed in the hope that it will be useful, but WITHOUT ANY WARRANTY; without even the implied warranty of MERCHANTABILITY or FITNESS FOR A PARTICULAR PURPOSE. See the GNU General Public License for more details.

You should have received a copy of the GNU General Public License along with this program; if not, write to the Free Software Foundation, Inc., 51 Franklin Street, Fifth Floor, Boston, MA 02110-1301, USA.

**Also add information on how to contact you by electronic and paper mail.**

**If the program is interactive, make it output a short notice like this when it starts in an interactive mode:**

```
Gnomovision version 69, Copyright (C) year name of author
Gnomovision comes with ABSOLUTELY NO WARRANTY; for details
type `show w'. This is free software, and you are welcome
to redistribute it under certain conditions; type `show c'
for details.
```

**The hypothetical commands ``show w'` and ``show c'` should show the appropriate parts of the General Public License. Of course, the commands you use may be called something other than ``show w'` and ``show c'`; they could even be mouse-clicks or menu items--whatever suits your program.**

**You should also get your employer (if you work as a programmer) or your school, if any, to sign a "copyright disclaimer" for the program, if necessary. Here is a sample; alter the names:**

```
Yoyodyne, Inc., hereby disclaims all copyright
interest in the program `Gnomovision'
(which makes passes at compilers) written
by James Hacker.
```

---

signature of Ty Coon, 1 April 1989  
Ty Coon, President of Vice

This General Public License does not permit incorporating your program into proprietary programs. If your program is a subroutine library, you may consider it more useful to permit linking proprietary applications with the library. If this is what you want to do, use the [GNU Lesser General Public License](#) instead of this License.

## Notification of Compliance

---

### Europe - EU Declaration of Conformity

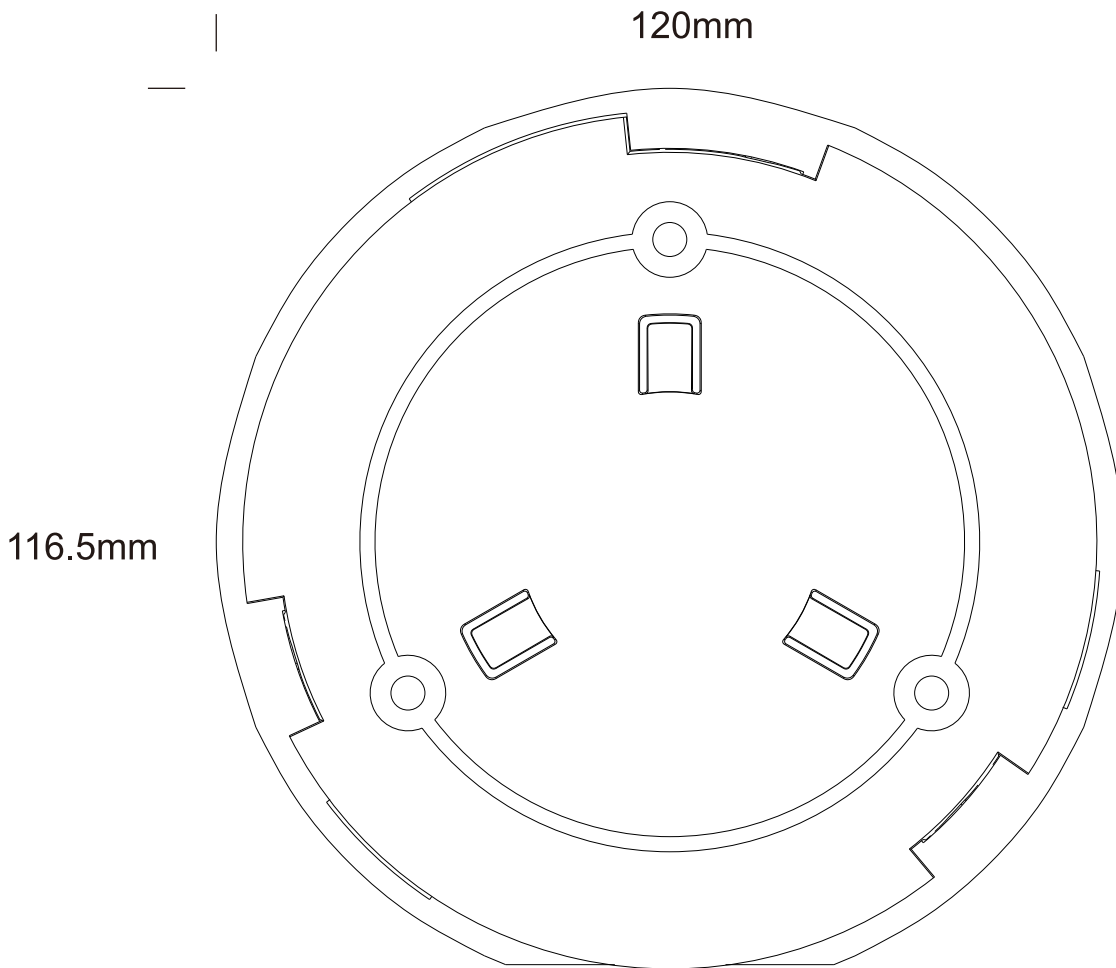


For complete DoC please visit  
<http://global.level1.com/downloads.php?action=init>

### GPL License Agreement

GPL may be included in this product, to view the GPL license agreement goes to  
<http://download.level1.com/level1/gpl/GPL.pdf>

For GNU General Public License (GPL) related information, please visit  
<http://global.level1.com/downloads.php?action=init>

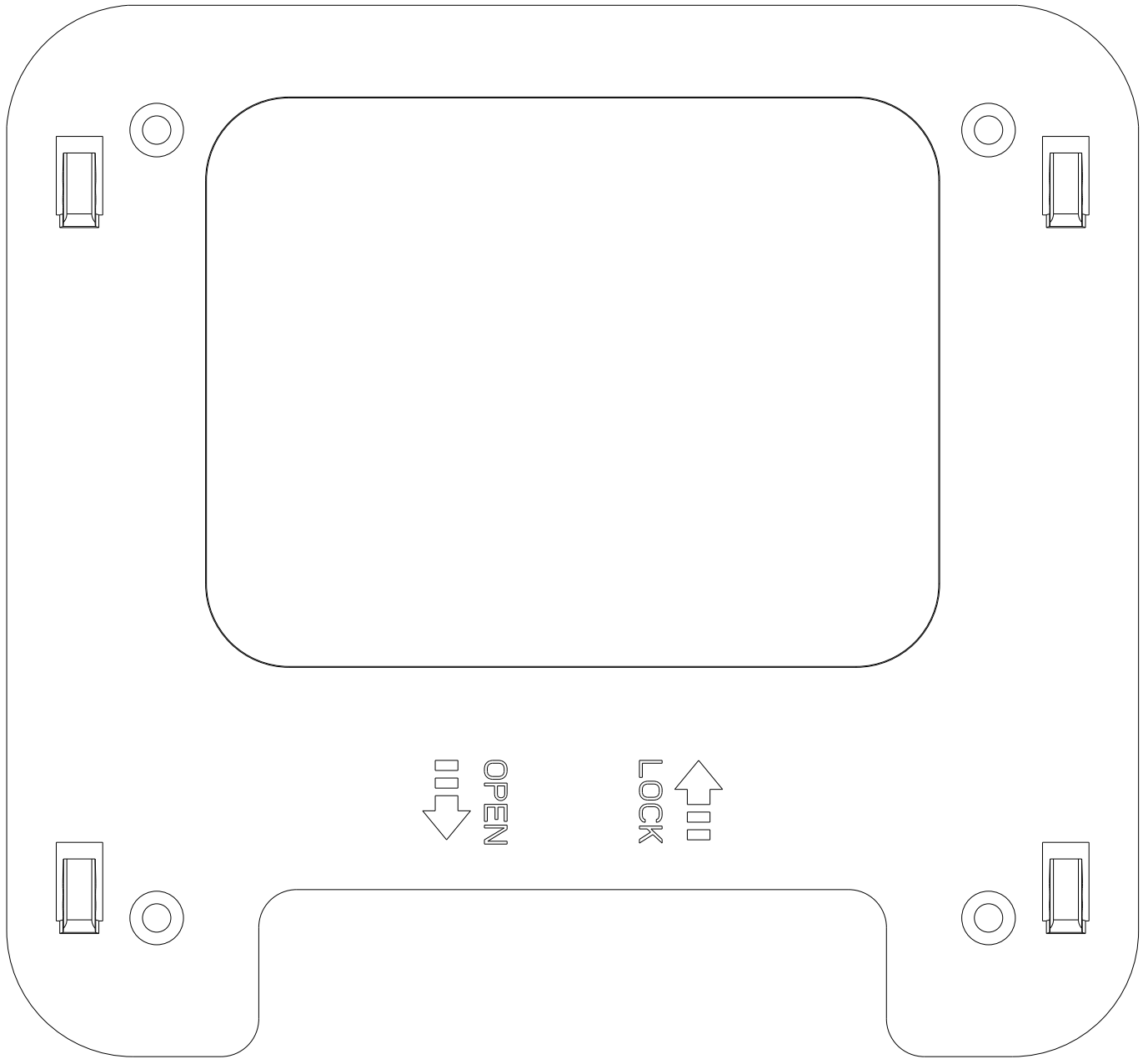


scale 1:1

WAP - 8121

176.9mm

166.8mm



scale 1:1

WAP - 8122