



Questo manuale d'istruzione è fornito da trovaprezzi.it. Scopri tutte le offerte per [MSI Claw 8 Ai+](#) o cerca il tuo prodotto tra le [migliori offerte di Console Giochi](#)



Questo manuale d'istruzione è fornito da trovaprezzi.it. Scopri tutte le offerte per [MSI Claw 8 Ai+](#) o cerca il tuo prodotto tra le [migliori offerte di Console Giochi](#)

msi

USER GUIDE

Gaming

Content Creation

Business & Productivity



MSI

USER GUIDE

MSI Claw, the handheld PC

Content

Copyright and Trademarks Notice.....	1-5
Revision History	1-5
FCC-B Radio Frequency Interference Statement	1-6
FCC Conditions	1-6
CE Conformity	1-7
Battery Regulations	1-7
WEEE Statement	1-7
RoHS Statement	1-8
Japan JIS C 0950 Material Declaration.....	1-8
India RoHS.....	1-8
Turkey EEE regulation	1-8
Ukraine restriction of hazardous substances	1-8
Vietnam RoHS.....	1-8
Safety Instructions.....	1-9

Introductions.....2-1

Unpacking	2-2
Product Overview	2-3
Top and Bottom Side Views (Claw 7).....	2-3
Top and Bottom Side Views (Claw 8).....	2-4
Upper and Lower Side Views (Claw 7).....	2-6
Upper and Lower Side Views (Claw 8).....	2-6
Specifications	2-9

How to Get Started	3-1
Begin to Use MSI Claw	3-2
How to Go Through OOBE for MSI Claw	3-3
How to Manage Power Supply	3-7
PD Adapter.....	3-7
Battery.....	3-7
How to Set Up Windows Hello	3-9
Create an Account's Password	3-9
Setting up Windows Hello PIN	3-11
Setting up Windows Hello Fingerprint	3-13
How to Set Up Bluetooth Connection.....	3-15
How to Set Up WiFi Connection.....	3-16
About M.2 SSD Slot	3-17
How to Connect MSI Nest Docking Station.....	3-17
About MSI Center M.....	3-18
About Quick Settings.....	3-19

Copyright and Trademarks Notice

Copyright © Micro-Star Int'l Co., Ltd. All rights reserved. The MSI logo used is a registered trademark of Micro-Star Int'l Co., Ltd. All other marks and names mentioned may be trademarks of their respective owners. No warranty as to accuracy or completeness is expressed or implied. MSI reserves the right to make changes to this document without prior notice.

Revision History

- ▶ Version: 1.0
- ▶ Date: 10, 2024

FCC-B Radio Frequency Interference Statement



This equipment has been tested and found to comply with the limits for a Class B digital device, pursuant to part 15 of the FCC rules. These limits are designed to provide reasonable protection against harmful interference in a residential installation.

This equipment generates, uses and radiates radio frequency energy, and, if not installed and used in accordance with the instructions, may cause harmful interference to radio communications. However, there is no guarantee that interference will not occur in a particular installation. If this equipment does cause harmful interference to radio or television reception, which can be determined by turning the equipment off and on, the user is encouraged to try to correct the interference by one or more of the following measures:

- ▶ Reorient or relocate the receiving antenna.
- ▶ Increase the separation between the equipment and receiver.
- ▶ Connect the equipment into an outlet on a circuit different from that to which the receiver is connected.

NOTE

- ▶ The changes or modifications not expressly approved by the party responsible for compliance could void the user's authority to operate the equipment.
- ▶ Shield interface cables and AC power cord, if any, must be used in order to comply with the emission limits.

FCC Conditions

This device complies with part 15 of the FCC Rules. Operation is subject to the following two conditions:

- ▶ This device may not cause harmful interference.
- ▶ This device must accept any interference received, including interference that may cause undesired operation.

CE Conformity



This device is in compliance with the essential safety requirements and other relevant provisions set out in the European Directive.

Battery Regulations



European Union: Batteries, battery packs, and accumulators should not be disposed of as unsorted household waste. Please use the public collection system to return, recycle, or treat them in compliance with the local regulations.



廢電池請回收

BSMI: For better environmental protection, waste batteries should be collected separately for recycling or special disposal.

California, USA: The button cell battery may contain perchlorate material and requires special handling when recycled or disposed of in California.

For further information please visit: <https://dtsc.ca.gov/perchlorate/>

Safety Guideline for Using Lithium Battery

Danger of explosion if battery is incorrectly replaced. Replace only with the same or equivalent type recommended by the equipment manufacturer. Discard used batteries according to manufacturer's instructions.

WEEE Statement



European Union: Under the European Union ("EU") Directive on Waste Electrical and Electronic Equipment, Directive 2002/96/EC, which takes effect on August 13, 2005, products of "electrical and electronic equipment" cannot be discarded as municipal waste anymore and manufacturers of covered electronic equipment will be obligated to take back such products at the end of their useful life.

RoHS Statement

Japan JIS C 0950 Material Declaration

A Japanese regulatory requirement, defined by specification JIS C 0950, mandates that manufacturers provide material declarations for certain categories of electronic products offered for sale after July 1, 2006.

<https://csr.msi.com/global/Japan-JIS-C-0950-Material-Declarations>

<https://csr.msi.com/tw/Japan-JIS-C-0950-Material-Declarations>

India RoHS

This product complies with the "India E-waste (Management and Handling) Rule 2016" and prohibits use of lead, mercury, hexavalent chromium, polybrominated biphenyls or polybrominated diphenyl ethers in concentrations exceeding 0.1 weight % and 0.01 weight % for cadmium, except for the exemptions set in Schedule 2 of the Rule.

Turkey EEE regulation

Conforms to the EEE Regulations of the Republic Of Turkey.

Ukraine restriction of hazardous substances

The equipment complies with requirements of the Technical Regulation, approved by the Resolution of Cabinet of Ministry of Ukraine as of 10 March 2017, № 139, in terms of restrictions for the use of certain dangerous substances in electrical and electronic equipment.

Vietnam RoHS

As from December 1, 2012, all products manufactured by MSI comply with Circular 30/2011/TT-BCT temporarily regulating the permitted limits for a number of hazardous substances in electronic and electric products.

Safety Instructions



Read the safety instructions carefully and thoroughly. All cautions and warnings on the device or user's guide should be noted.



- Replacement of a battery with an incorrect type that can defeat a safeguard.
 - Disposal of a battery into fire or a hot oven, or mechanically crushing or cutting of a battery, that can result in an explosion. Leaving a battery in an extremely high temperature surrounding environment that can result in an explosion or the leakage of flammable liquid or gas.
 - A battery subjected to extremely low air pressure that may result in an explosion or the leakage of flammable liquid or gas.
-



- Plug the power cord into an AC outlet that is easily accessible at all times.
 - Disconnect power from the device by unplugging the power cord from the AC outlet.
 - If a power cord with 3-prong plug came with the package, always plug the power cord into a grounded (earthed) AC outlet. Do not remove the grounding pin of the power cord, since it is an important safety feature.
 - Always use the power adapter and power cord approved by MSI, or a compatible one purchased from MSI.
 - Place the power cord in a way that people are unlikely to step on it. Do not place anything on top of the power cord.
-



WARNING: Do not ingest battery. If the coin / button cell battery is swallowed, it can cause severe internal burns and can lead to death. Keep new and used batteries away from children.



Keep the device away from humidity and high temperature.



- Never pour liquid into the opening that could damage the device or cause an electrical shock.
 - Never use any chemical substance to wipe the surface of this device.
-



Always keep the strong magnetic or electrical objects away from the device.



- Do not leave the device in an unconditioned environment with a storage temperature above 60°C (140°F) or below 0°C (32°F), which may damage the device.
- This device should be operated under maximum ambient temperature of 35°C (95°F).



If any of the following situations arises, get the device checked by a service personnel:

- The power cord or plug is damaged.
- Liquid has penetrated into the device.
- The device has been exposed to moisture.
- The device has not worked well or you can not get it work according to User's Manual.
- The device was dropped and damaged.
- The device has obvious signs of breakage.

Green Product Features

- Reduced energy consumption during use and stand-by
- Limited use of substances harmful to the environment and health
- Easily dismantled and recycled
- Reduced use of natural resources by encouraging recycling
- Extended product lifetime through easy upgrades
- Reduced solid waste production through take-back policy



Environmental Policy

- The product has been designed to enable proper reuse of parts and recycling and should not be thrown away at its end of life.
 - Users should contact the local authorized point of collection for recycling and disposing of their end-of-life products.
 - Visit the MSI website and locate a nearby distributor for further recycling information.
 - Users may also reach us at gpcontdev@msi.com for information regarding proper disposal, take-back, recycling, and disassembly of MSI products.
-

Introductions

Congratulations on becoming the owner of this handheld device, the finely designed MSI Claw. You will have a delightful and professional experience in using this exquisite handheld device. We are proud to tell users that this device is thoroughly tested and certified by our reputation for unsurpassed dependability and customer satisfaction.

Unpacking

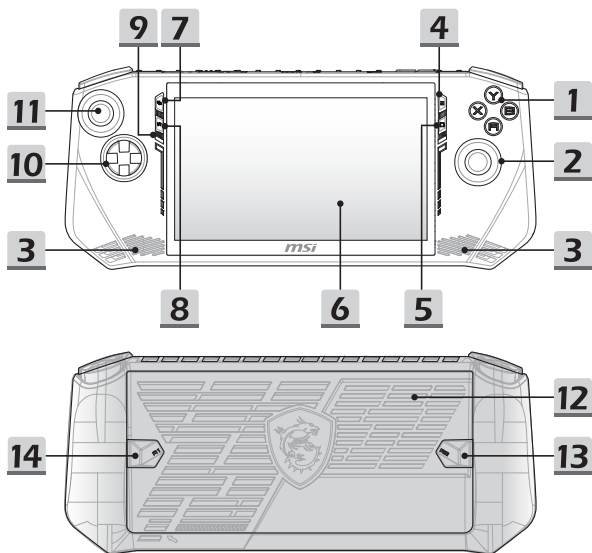
First, unpack the shipping carton and check all items carefully. If any item contained is damaged or missing, please contact your local dealer immediately. Also, keep the box and packing materials in case you need to ship the unit in the future. The package should contain the following items:

- ▶ MSI Claw, the handheld PC
- ▶ Quick Start Guide
- ▶ USB-C PD adapter and AC power cord
- ▶ Exquisite Pouch

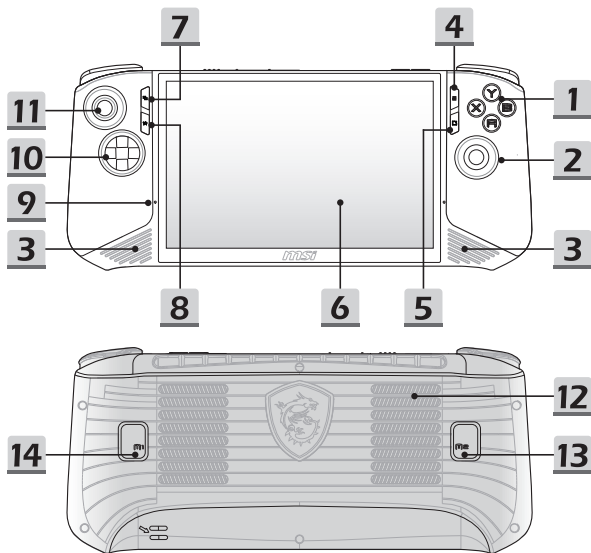
Product Overview

This section provides the description of basic aspects of the device. It will help you to know more about the appearance of this device before using it. Please be aware that the figures shown here are for reference only.

Top and Bottom Side Views (Claw 7)



Top and Bottom Side Views (Claw 8)



1. A/B/X/Y Buttons

Control buttons for game playing.

2. Right Stick

Joystick for game playing.

3. Stereo Speakers

This device is equipped with built-in stereo speakers which deliver the high quality sound, and supports the HD audio technology.

4. Menu Button

Use this button to access Settings or Help of an app or game.

5. Quick Settings Button

Use this button to access Quick Settings.

6. Touch Screen Monitor

This device is equipped with a multi-touch screen monitor which allows users to interact with MSI Claw by using fingers or stylus.

7. View Button

This button works differently depending on the app or game.

8. MSI Button

Use this button to access MSI Center M application.

9. Internal Microphone

The built-in microphone shares the same function with an external one.

10. Directional Pad (D-pad)

Directional pad for game playing. It moves the focus up, down, right, and left in the interface.

11. Left Stick

Joystick for game playing.

12. Ventilator

The ventilator is designed to cool the system. DO NOT block the ventilator for air circulation.

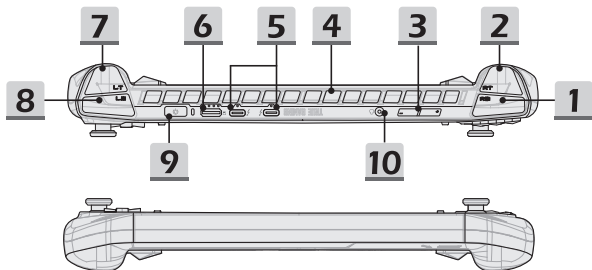
13. Macro 2 Button

Use this button to setup a Macro that meets user's needs.

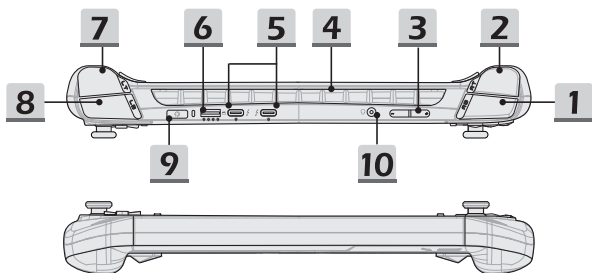
14. Macro 1 Button

Use this button to setup a Macro that meets user's needs.

Upper and Lower Side Views (Claw 7)



Upper and Lower Side Views (Claw 8)



1. RB Button

Control button for game playing.

2. RT Button

Control button for game playing.

3. Volume Buttons

Use both buttons to increase or decrease the built-in speaker's volume.

4. Ventilator

The ventilator is designed to cool the system. DO NOT block the ventilator for air circulation.

5. Thunderbolt (USB-C) (PD-in) Ports

- Thunderbolt™ 4 , optionally supports USB 40Gbps, PCIe, HDMI™, DisplayPort connection; 8K display monitor output; up to 40Gbps transfer rate.
- Support Power Delivery function with 65~100W power input.
- Optionally support Power Delivery function with 27~100W power input only when the notebook is powered off.
- Support maximum 5V/3A portable charging power output.
- Support using a power bank to supply power to the device and charge the battery. Make sure the charging power output of the power bank meets the minimum requirements of the device.

6. Card Reader

The built-in card reader supports various types of memory cards. Check the Specifications for details.

7. LT Button

Control button for game playing.

8. LB Button

Control button for game playing.

9. Power Button/ Status LED/ Fingerprint Sensor

Power Button

- Press this button to power on the device.
- While the device is powered on, press this button to force it into sleep state. Press again to wake up the system from sleep state.
- Long press this button and follow the on-screen instructions to power off the device.

Status LED



- LED glows white when the device is powered on.
- LED goes off when the device goes to the sleep state.
- LED goes off when the device is turned off.
- LED glows amber when the battery is being charged.
- LED blinks continuously in amber if the battery fails. If the problem persists, please contact your local authorized retailer or service center.
- LED goes out when the battery is fully charged or when AC adapter is disconnected.

Fingerprint

- Fingerprint sensor allows users to set up their own fingerprints to unlock the device.

10. Combo Audio Port

- A port for a headset, microphone, or headset with microphone.
- The Combo Audio Port supports 4-Pole 3.5mm headphone jack.

Specifications

The specifications listed here is reference only, and may vary and change without notice.

Visit MSI official website at www.msi.com, or contact the local retailers to learn about the details of the product you purchased.

It is always recommended to use an authorized power adapter and a power cord to supply power to the device while performing multiple tasks.

Physical Characteristic	
Dimension	Claw 7: 290.0 (W) x 120.0 (D) x 21.2 (H) mm Claw 8: 300.0 (W) x 121.0 (D) x 24.0 (H) mm
Weight	Claw 7: <680g Claw 8: <800g
CPU	
Package	BGA
Mobile Processor	The latest Intel® Core™ Processor Family
Memory	
Technology	LPDDR5
Memory	Memory on chip
Maximum	Up to 32GB
Power	
USB-C PD adapter	1 x 65W, 20V Input: 100-240V~, 50/60Hz Output: 20V ---, 3.25A
Battery	6-cell
Storage	
SSD	1 x M.2 2230 NVMe PCIe SSD slot



Introductions

I/O Port

Thunderbolt™ 4	<p>2 x USB 40Gbps (USB-C) (PD-in)</p> <ul style="list-style-type: none">• PCIe, HDMI™, DisplayPort connection may be optionally supported• 8K display monitor output• Up to 40Gbps transfer rate• Support maximum 5V/3A portable charging power output• Power Delivery function may be optionally supported. Choose either way to use Power Delivery function to supply power for the device:<ol style="list-style-type: none">(1) connect a 65~100W USB-C PD adapter.(2) connect a power bank that meets the minimum requirements.
Audio	1 x Mic-in/ Headphone-out combo
Card Reader	1 x MicroSD

Communication Port

Wireless LAN	Supported
Bluetooth	Supported

Display

Type	Claw 7: 16:9, 7" FHD LED panel Claw 8: 16:9, 8" FHD LED panel
Touch Screen	Multi-touch screen monitor supported

Audio

Internal Speakers	2 x stereo speakers
-------------------	---------------------

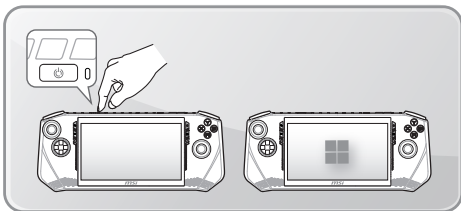
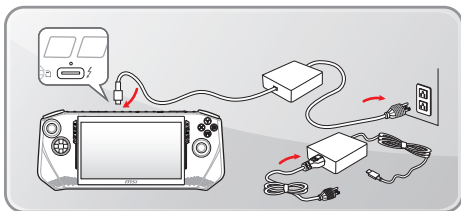
Operating System

Operating System	Win11
------------------	-------

How to Get Started

Begin to Use MSI Claw

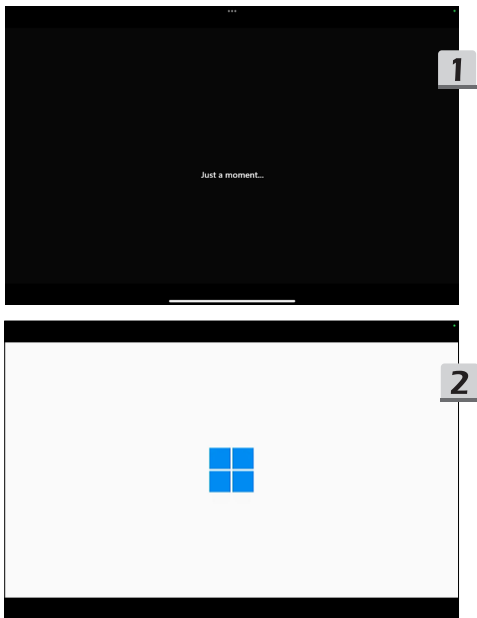
For a new user of MSI Claw, we would like to suggest you follow the illustrations below to begin to use the handheld device.



How to Go Through OOBЕ for MSI Claw

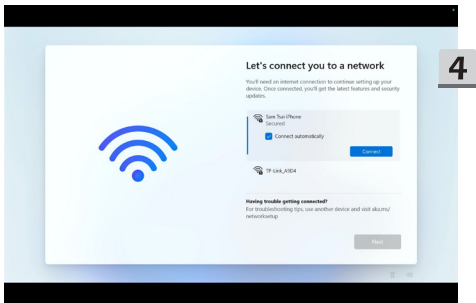
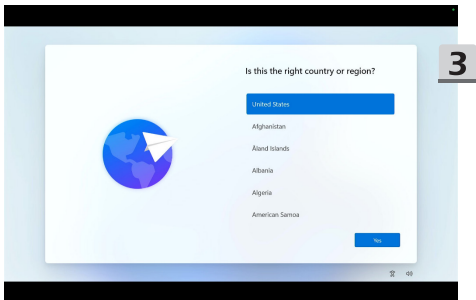
To power on the MSI Claw for the very first time, users will be requested to go through OOBЕ process. Follow the instructions below to continue and complete OOBЕ.

1. Power on the MSI Claw, and wait 10 seconds for the system to boot. Meanwhile, the LEDs of Left and Right sticks will glow.
 2. Note that it may take 1 minute for the system to turn on the screen, and 2 minutes to load the OS.
-

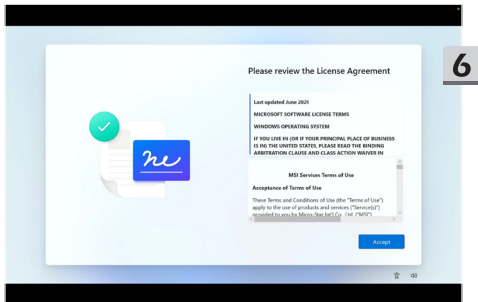
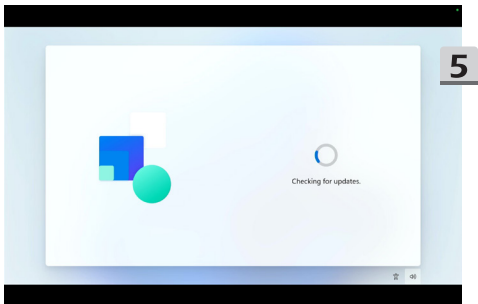


How to Get Started

3. Select a country or region, and a keyboard layout.
 4. Set up a WiFi connection for the MSI Claw.
-

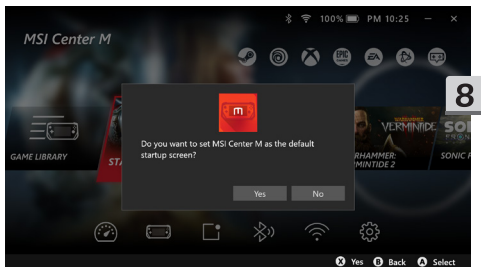
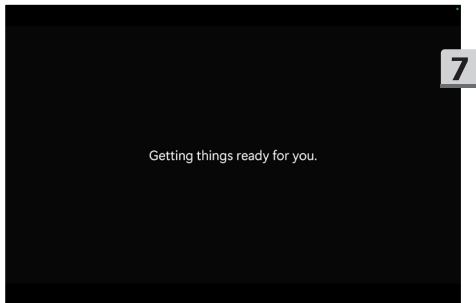


-
- Wait for the system to check the updates. This process may take 3 minutes, and the system will restart the MSI Claw once the process is completed.
 - Follow the on-screen instructions to continue. Accept the MSI License Agreement, set up the personal preferences, and then wait the OS to load for a couple minutes.
-



How to Get Started

7. Now, you are ready to use the MSI Claw.
 8. Restart the MSI Claw, and follow the on-screen instruction to set MSI Center M as the default startup screen.
-



How to Manage Power Supply

This section provides users basic safety precautions to take when using an PD adapter and battery power properly.

PD Adapter

Ensure that the handheld device is connected to an AC power source via the PD adapter before turning it on for the first time. If the device automatically shuts down due to low battery power, it is likely to cause system failure. Below are some Dos and Don'ts of an PD adapter.

- ▶ **Dos**
 - Use the adapter that shipped with MSI Claw only.
 - Always be aware of heat coming from the in use PD adapter.
 - Unplug the AC power cord before disassembly the device.
- ▶ **Don'ts**
 - Cover an in-use adapter since it can generate heat.
 - Have the AC power cord plugged after powering off the system when the device is going to be left unused for a longer time.

Battery

When you get a new handheld device or a new battery for the device, it is important to know how to charge and care for the battery in order to get the most out it for as long as you can.

Be aware of that the battery may not be replaced by users.

- ▶ **Safety guidelines**
 - This device is equipped with a non-removable battery, follow the local regulations while discarding the device.
 - Always keep the device and its battery away from excessive moisture and extreme temperatures.
 - Always unplug the AC power cord before installing any module to the device.

► **Battery type**

- This device may be equipped with a high-capacity Li-ion or Li-polymer battery pack depending on the model you have.
- The rechargeable battery is an internal power source of the device.

► **Battery charging behavior**

To optimize battery life and avoid a sudden power loss, read the tips below:

- Suspend system operation if the system will be idle for a while or shorten the suspend timer's time period.
- Turn off the system if you won't be using it for a period of time.
- Disable unnecessary settings or remove idle peripherals.
- Connect an PD adapter to the system whenever possible.

► **How to charge the battery properly**

Please pay attention to the following tips before recharging the battery:

- If a charged battery is not available, save your tasks and close all running programs and shut down the system.
- Plug in an PD adapter.
- You can use the system, suspend system operation or shut down and turn off the system without interrupting the charging process.
- The Li-ion or Li-polymer battery has no memory effect. It is unnecessary to discharge the battery before recharging. However, to optimize the life of battery, we suggest that consuming the battery power completely once a month is necessary.
- The actual charging time will be determined by the applications in use.
- To avoid damaging the battery life cycle from constantly recharging the battery, the battery will stop charging once it is fully charged, even if the adapter is still connected to the handheld. Please always disconnect the adapter and use battery to supply power to the handheld once it is fully charged, and be noted that for better battery life cycle concern, the battery recharging process will not be activated once and again if its capacity is above 90% to 99%.

How to Set Up Windows Hello

Windows Hello is a more secure, personal way to get an instant access to your Windows operating system using fingerprint or facial recognition. The feature requires fingerprint reader or an infrared camera that supports it. Once you're set up, you'll be able to sign in with a quick swipe or glance.

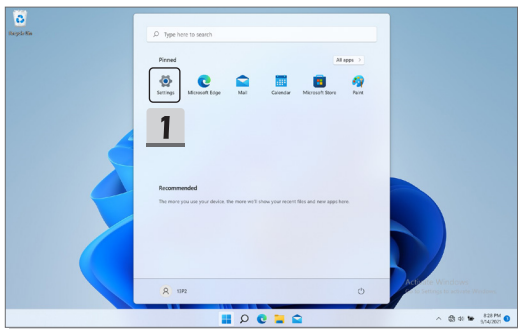
Follow the instructions below to setup your Windows Hello Logins - Face, Fingerprint, and PIN.

The figures shown here are for reference only, they may vary depending on the different version of Windows operating system installed.

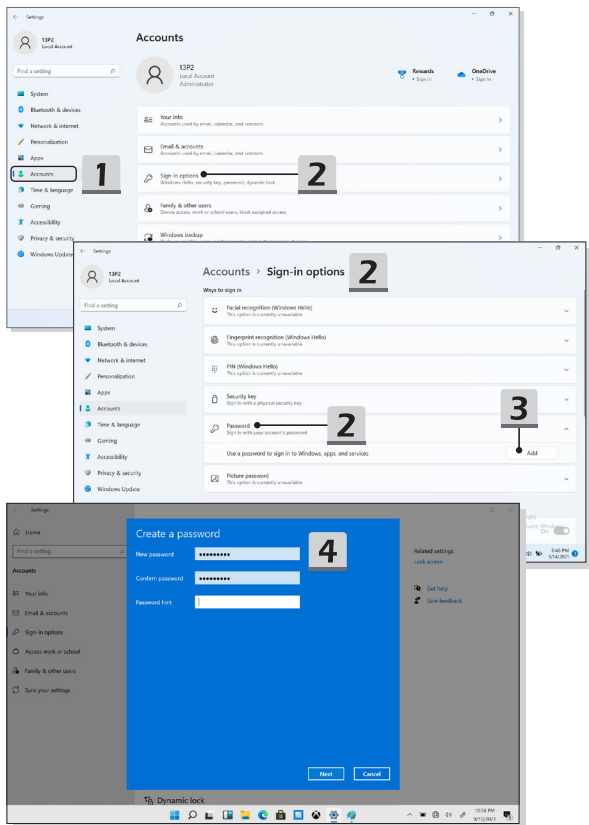
Create an Account's Password

Before setting up Windows Hello, it is required to setup the account's password.

1. Go to [Start > Settings] and locate [Accounts].
 2. In [Sign-in options], click [Password].
 3. Under [Password], click [Add] to continue.
 4. Follow the on-screen instructions to create a new password for your account, and then click [Finish] to close.
-



How to Get Started

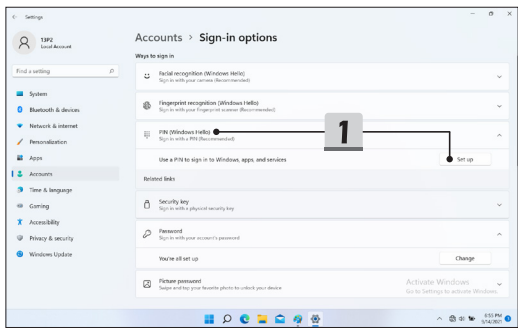


Setting up Windows Hello PIN

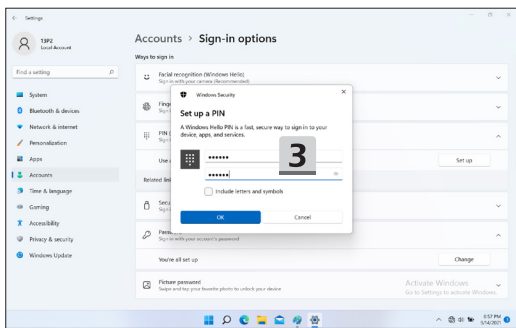
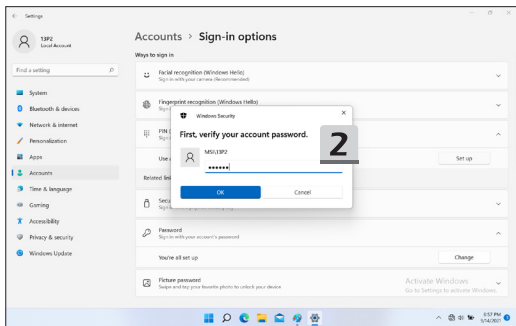
A Windows Hello PIN is a fast, secure way to sign in to your device, apps and services.

The figures shown here are for reference only, they may be varied from the actual ones.

1. Select [PIN (Windows Hello)], and then click [Set up] to continue.
 2. Verify your account's password first.
 3. Set up your Windows Hello PIN. Click [OK] to close.
-



How to Get Started

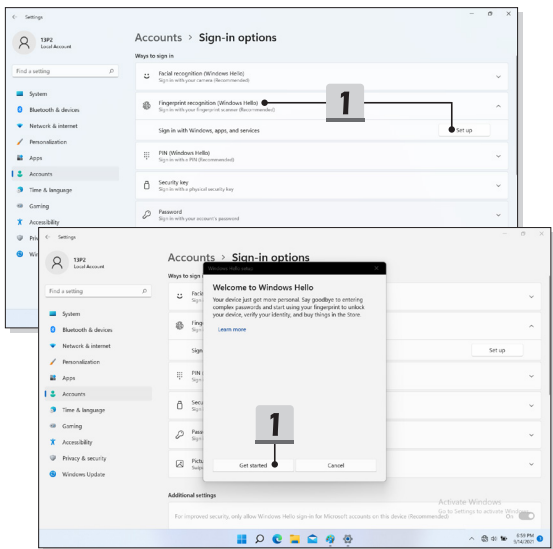


Setting up Windows Hello Fingerprint

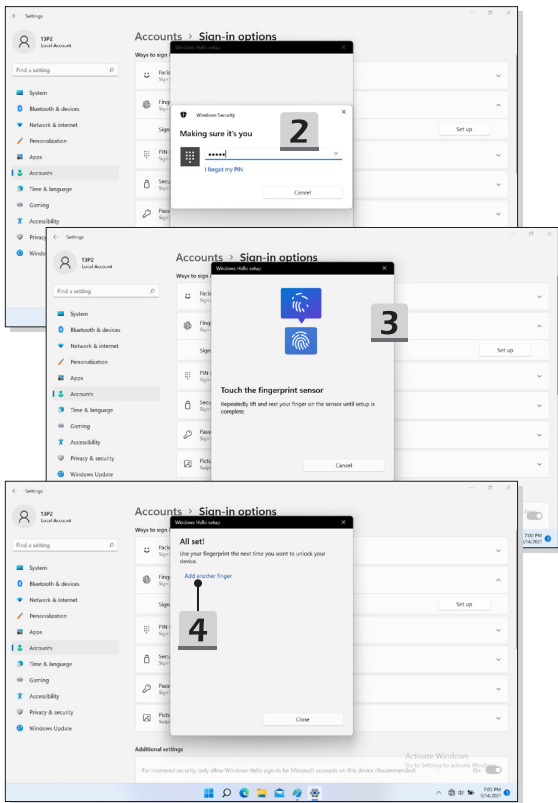
* For selected models only

Time to say goodbye to entering complex passwords and start using your fingerprint to unlock your device and verify your identity.

1. Select [Fingerprint Recognition (Windows Hello)], click [Set up] to open up the Windows Hello setup wizard, and then click [Get Started] to continue.
 2. Verify your Windows Hello PIN.
 3. Place your preferred finger on the fingerprint sensor. You will be asked to swipe the same finger for a few times to setup Windows Hello.
 4. Click [Add Another] if you want to repeat the process with another finger.
-



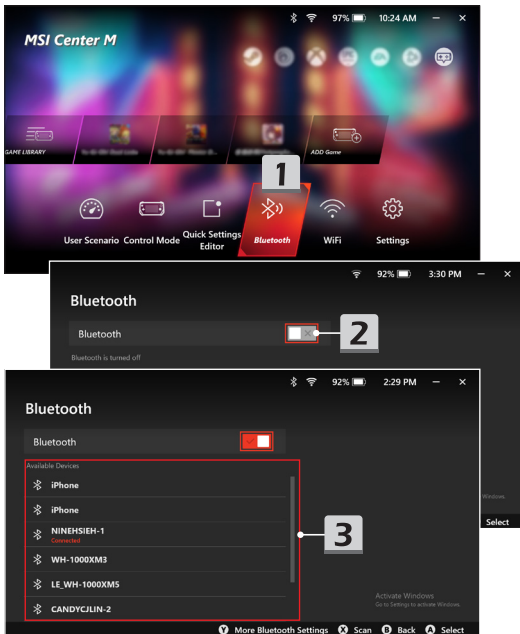
How to Get Started



How to Set Up Bluetooth Connection

To set up a Bluetooth connection for MSI Claw, please go to MSI Center M, and then follow the steps shown below to continue.

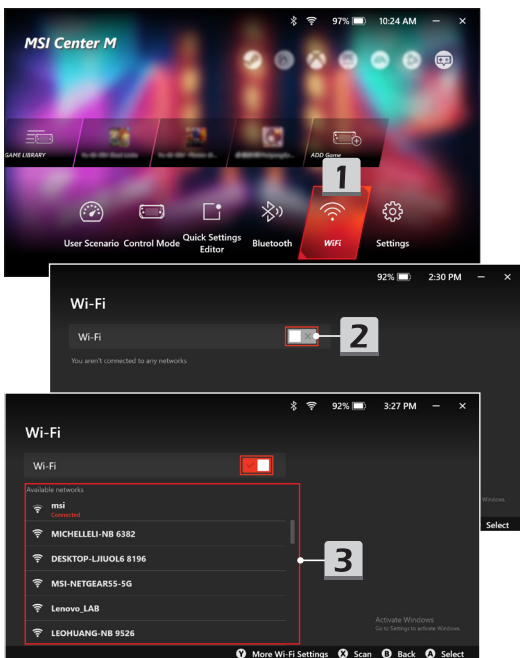
1. Select [Bluetooth] to access the setting page.
 2. Switch the button to turn Bluetooth on.
 3. Choose an available device to pair, and follow the on-screen instructions to complete pairing.
-



How to Set Up WiFi Connection

To set up a WiFi connection for MSI Claw, please go to MSI Center M, and then follow the steps shown below to continue.

1. Select [WiFi] to access the setting page.
 2. Switch the button to turn WiFi on.
 3. Choose an available network from the network list to connect to the Internet.
-



About M.2 SSD Slot

MSI Claw may be equipped with M.2 SSD slots for M.2 SSD cards, which are compatible with SATA or PCIe interfaces, providing diverse features and usages to users. Consult an authorized retailer or service center for correct specifications and installations.

How to Connect MSI Nest Docking Station

With MSI Nest Docking Station, it will be able for users to connect diverse peripheral devices to MSI Claw.

To use MSI Nest Docking Station to connect peripheral devices, please refer to the instruction guide of MSI Nest Docking Station. MSI Nest Docking Station and MSI Claw would be capable to auto detect the connected peripheral devices.

Visit MSI official website at www.msi.com to learn further information.



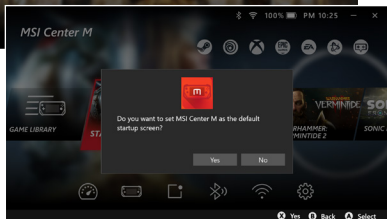
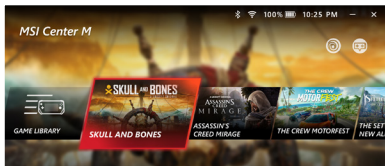
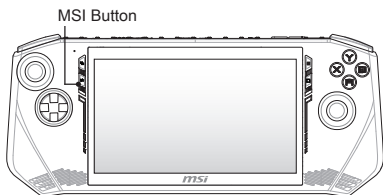
About MSI Center M

MSI Claw is equipped with an exclusive application, MSI Center M, created only for MSI's products, delivering optimized performance, and efficiency to gamers and diverse users.

Use MSI Button to access MSI Center M application.

Please set MSI Center M as the default startup screen for using Quick settings and customized features.

Visit MSI official website at www.msi.com to learn further information.



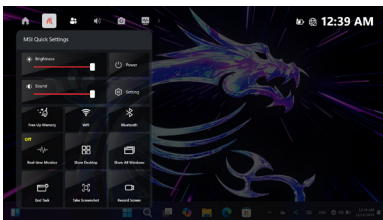
About Quick Settings

Users are allowed to get instant options in game playing in accordance with users' needs through Quick Settings, such as adding a Bluetooth device or modify User Scenarios.

Use Quick Settings Button to access Quick Settings.

Visit MSI official website at www.msi.com to learn further information.

Quick Settings Button





MSI.COM



SUPPORT



SOCIAL MEDIA