



Questo manuale d'istruzione è fornito da trovaprezzi.it. Scopri tutte le offerte per [StarTech.com](https://www.startech.com) PEXUSB312A3 o cerca il tuo prodotto tra le [migliori offerte di Altre Schede](#)



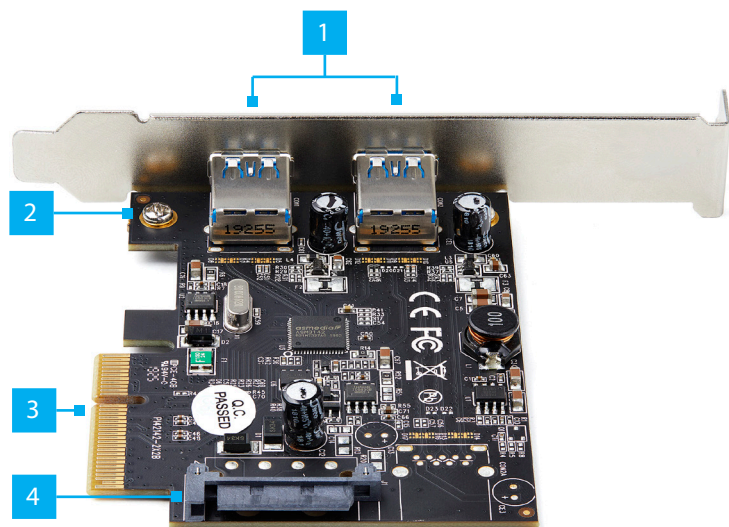
Questo manuale d'istruzione è fornito da trovaprezzi.it. Scopri tutte le offerte per [StarTech.com](https://www.startech.com) PEXUSB312A3 o cerca il tuo prodotto tra le [migliori offerte di Altre Schede](#)



Quick-Start Guide

## 2-Port USB 3.1 Card | 10Gbps per port | 2x USB-A | PCIe

### Product Diagram (PEXUSB312A3)



Component	Function
1 USB-A Ports	• Used to connect a <b>USB Peripheral Device</b> to the <b>USB Card</b> .
2 Bracket Screws	• Used to <b>Secure</b> the <b>Low Profile</b> or <b>Full Profile Bracket</b> to the <b>USB Card</b> .
3 PCI Express Connector	• Used to connect the <b>USB Card</b> to the <b>PCI Express Slot</b> on the <b>Host Computer</b> .
4 SATA Power Connector	• (Optional) Connect a <b>15 Pin SATA Power Connector</b> to provide extra power to the <b>USB Type-A Ports</b> .

### Requirements

For the latest requirements, please visit [www.startech.com/PEXUSB312A3](https://www.startech.com/PEXUSB312A3)

- Computer with an available PCI Express® slot (x4, x8, or x16)
- (Optional) SATA Power Source

### Tools

- Small Phillips® Head Screwdriver

### Hardware Installation

#### Installing the Low Profile Bracket

By default the **Full Profile Bracket** is attached to the **USB Card**. Depending on your system configuration you may need to remove the **Full Profile Bracket** and replace it with the **Low Profile Bracket** (included).

1. Using a **Small Phillips Head Screwdriver** (sold separately), remove the two **Bracket Screws** securing the **Full Profile Bracket** to the **USB Card**.
2. Align the **Screw Holes** on the **USB Card** with the **Screw Holes** on the **Low Profile Bracket**. Making sure the **USB Card** is sitting on top of the **Screw Holes** on the **Low Profile Bracket**.
3. Insert the **Bracket Screws** through the **USB Card** and into the **Screw Holes** on the **Low Profile Bracket**.
4. Using the **Small Phillips Head Screwdriver**, tighten the **Bracket Screws**, being careful not to over-tighten.

#### Installing the USB Card

**Warning:** *USB cards can be damaged by static electricity. Make sure that you are properly grounded before you open the computer case or touch the **USB Card**. You should wear an anti-static strap when you install any computer components. If an anti-static strap is not available, discharge any built-up static electricity by touching a large grounded metal surface for several seconds. Only handle the **USB Card** by its edges and do not touch the gold connectors.*

1. Turn off the **Host Computer** and disconnect any **Peripheral Devices** that are connected (e.g. printer, external hard drives, etc.).
2. Unplug the **Power Cable** from the back of the **Host Computer**.
3. Remove the **Cover** from the **Host Computer's Case**.  
**Note:** *Consult the documentation that came with the **Host Computer** for details about how to remove the **Cover** safely.*
4. Locate an open **PCI Express Slot** (x4, x8, or x16) and remove the corresponding **Metal Cover Plate** from the back of the **Host Computer's Case**.
5. Gently insert the **USB Card** into the open **PCI Express Slot** and fasten the **Bracket** to the back of the **Host Computer's Case**.
6. (Optional) Connect a **15 Pin SATA Power Connector** from the **Power Supply** to the **SATA Power Connector** on the **USB Card**.

**Note:** Connecting a separate **Power Supply** to the **USB Card** will provide extra power to the **USB-A Ports** for charging connected **Devices**.

- Place the **Cover** back onto the **Host Computer's Case**.
- Reconnect the **Power Cable** to the back of the **Host Computer**.
- Reconnect all of the **Peripheral Devices** that were disconnected in step 1.
- Connect **USB Peripheral Devices** to the **USB-A Ports** on the **USB Card**.

## Software Installation

When the **USB Card** is installed the drivers should install automatically. If the drivers do not automatically install, navigate to [www.startech.com/PEXUSB312A3](http://www.startech.com/PEXUSB312A3) to download the appropriate driver package.

- Click on the **Support** tab, under **Drivers**, select the appropriate driver package for the **Operating System** running on the **Host Computer**.
- When you have downloaded and unzipped the driver. Click on the **Installation Guide PDF** and follow the instructions.

## Installing the Driver in Windows 7

- If the **Found New Hardware** dialog box appears on your screen, close the dialog box or click the **Cancel** button.
- Navigate to the **Device Manager** screen.
- On the list of installed devices, right-click on **ASMedia USB3.1 eXtensible Host Controller**.
- Select **Update Driver** from the pop-up menu.

### FCC Compliance Statement

This equipment has been tested and found to comply with the limits for a Class B digital device, pursuant to part 15 of the FCC Rules. These limits are designed to provide reasonable protection against harmful interference in a residential installation. This equipment generates, uses and can radiate radio frequency energy and, if not installed and used in accordance with the instructions, may cause harmful interference to radio communications. However, there is no guarantee that interference will not occur in a particular installation. If this equipment does cause harmful interference to radio or television reception, which can be determined by turning the equipment off and on, the user is encouraged to try to correct the interference by one or more of the following measures:

- Reorient or relocate the receiving antenna.
- Increase the separation between the equipment and receiver.
- Connect the equipment into an outlet on a circuit different from that to which the receiver is connected.
- Consult the dealer or an experienced radio/TV technician for help

This device complies with part 15 of the FCC Rules. Operation is subject to the following two conditions:

(1) This device may not cause interference, and (2) this device must accept any interference received, including interference that may cause undesired operation. Changes or modifications not expressly approved by StarTech.com could void the user's authority to operate the equipment.

### Industry Canada Statement

This Class B digital apparatus complies with Canadian ICES-003.

Cet appareil numérique de la classe [B] est conforme à la norme NMB-003 du Canada.

CAN ICES-3 (B)/NMB-3(B)

This device complies with Industry Canada licence-exempt RSS standard(s). Operation is subject to the following two conditions: (1) This device may not cause interference, and (2) This device must accept any interference, including interference that may cause undesired operation of the device.

Le présent appareil est conforme aux CNR d'Industrie Canada applicables aux appareils radio exempts de licence. L'exploitation est autorisée aux deux conditions suivantes:

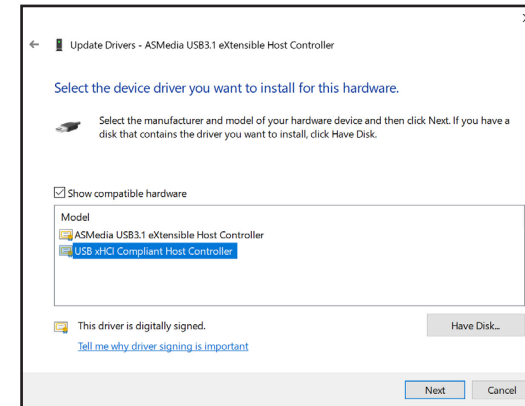
(1) l'appareil ne doit pas produire de brouillage, et (2) l'utilisateur de l'appareil doit accepter tout brouillage radioélectrique subi, même si le brouillage est susceptible d'en compromettre le fonctionnement.

### Use of Trademarks, Registered Trademarks, and other Protected Names and Symbols

This manual may make reference to trademarks, registered trademarks, and other protected names and/or symbols of third-party companies not related in any way to StarTech.com. Where they occur these references are for illustrative purposes only and do not represent an endorsement of a product or service by StarTech.com, or an endorsement of the product(s) to which this manual applies by the third-party company in question. StarTech.com hereby acknowledges that all trademarks, registered trademarks, service marks, and other protected names and/or symbols contained in this manual and related documents are the property of their respective holders.

PHILLIPS® is a registered trademark of Phillips Screw Company in the United States or other countries.

- On the **How do you want to search for drivers** screen, select the **Browse my computer for driver software** link.
- Click on the **Let me pick from a list of available drivers on my computer** link.
- Select, **USB xHCI Compliant Host Controller**.



### USB xHCI Compliant Host Controller

- Click the **Next** Button.
- Click the **Close** button once the installation is complete.

### Warranty Information

This product is backed by a two-year warranty.

For further information on product warranty terms and conditions, please refer to [www.startech.com/warranty](http://www.startech.com/warranty).

### Limitation of Liability

In no event shall the liability of StarTech.com Ltd. and StarTech.com USA LLP (or their officers, directors, employees or agents) for any damages (whether direct or indirect, special, punitive, incidental, consequential, or otherwise), loss of profits, loss of business, or any pecuniary loss, arising out of or related to the use of the product exceed the actual price paid for the product. Some states do not allow the exclusion or limitation of incidental or consequential damages. If such laws apply, the limitations or exclusions contained in this statement may not apply to you.

### Safety Measures

- If product has an exposed circuit board, do not touch the product under power.

### Mesures de sécurité

- Si l'un des circuits imprimés du produit est visible, ne pas touchez le produit lorsqu'il est sous tension.

### 安全対策

- 製品に露出した状態の回路基盤が含まれる場合、電源が入っている状態で製品に触らないでください。

### Misure di sicurezza

- Se il prodotto ha un circuito stampato visibile, non toccare il prodotto quando è acceso.

### Säkerhetsåtgärder

- Rör aldrig vid enheter med oskyddade kretskort när strömmen är påslagen.

### StarTech.com Ltd.

45 Artisans Cres  
London, Ontario  
N5V 5E9  
Canada

### StarTech.com LLP

2500 Creekside  
Parkway  
Lockbourne, Ohio  
43137  
U.S.A.

### StarTech.com Ltd.

Unit B, Pinnacle 15  
Gowerton Rd,  
Brackmills  
Northampton  
NN4 7BW  
United Kingdom

FR: startech.com/fr  
DE: startech.com/de  
ES: startech.com/es  
NL: startech.com/nl  
IT: startech.com/it  
JP: startech.com/jp