



Questo manuale d'istruzione è fornito da trovaprezzi.it. Scopri tutte le offerte per [StarTech.com](https://www.startech.com) PEXUSB312C3 o cerca il tuo prodotto tra le [migliori offerte di Altre Schede](#)



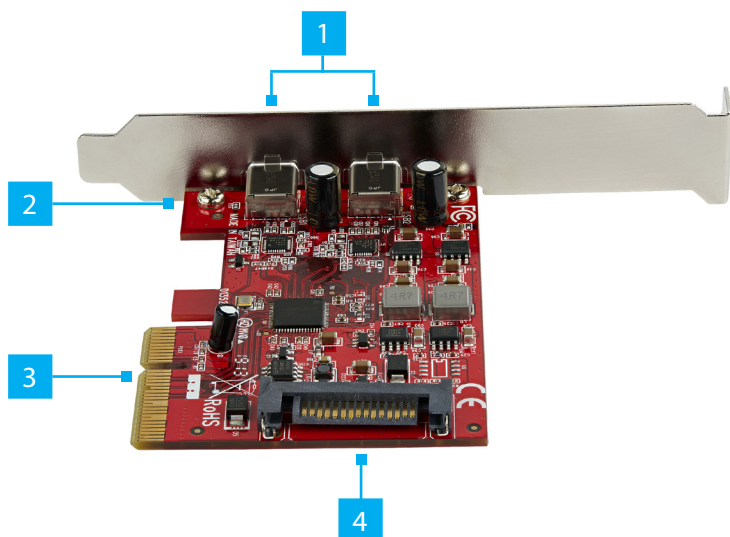
Questo manuale d'istruzione è fornito da trovaprezzi.it. Scopri tutte le offerte per [StarTech.com](https://www.startech.com) PEXUSB312C3 o cerca il tuo prodotto tra le [migliori offerte di Altre Schede](#)



Quick-Start Guide

2-Port USB 3.1 Card - 10Gbps per port - 2x USB-C - PCIe

Product Diagram (PEXUSB312C3)



Port	Function
1	USB 3.1 Type-C Ports <ul style="list-style-type: none">Connect two USB 3.1 Gen 2 Enabled Devices
2	Screws <ul style="list-style-type: none">Secure the Low-Profile or Full-Height Bracket to the PCIe Card (PCIe)
3	PCIe x 4 Connector <ul style="list-style-type: none">Connect the PCIe Card to the Computer Motherboard
4	SATA Power Connector <ul style="list-style-type: none">(Optional) Connect a 15 Pin SATA Power Connector to provide extra power to the USB 3.1 Type-C Ports

Requirements

For the latest requirements please visit: www.startech.com/PEXUSB312C3.

- PCIe Slot
- Phillips Head Screwdriver
- (Optional) SATA Power Source

Installation

Hardware

WARNING! PCIe Cards can be severely damaged by static electricity. Make sure that you are properly grounded before you open the **Computer Case** or touch the **PCIe Card**. You should wear an **Anti-Static Strap** when you install any computer component. If an **Anti-Static Strap** isn't available, discharge any built-up static electricity by touching a large **Grounded Metal Surface** for several seconds. Only handle the **PCIe Card** by its edges and don't touch the gold connectors.

1. Ensure the **Computer Power** is **Off**.
2. Unplug the **Computer Power Cord**.
3. Remove the **Computer Cover**.
Note: For further information on how to remove the **Computer Cover**, refer to the **Manual** that came with the **Computer**.
4. Remove the **Slot Bracket Holding Screw**.
5. Remove the corresponding **Full-Height or Low-Profile Slot Bracket** from an available **PCIe Slot**.
6. Reconfigure the **PCIe Card** for Full-Height or Low-Profile installations.
 - a. Remove the two **Screws** using a **Phillips Head Screwdriver**.
 - b. Remove the **Bracket**.
 - c. Place the **PCIe Card** onto the new **Bracket**, aligning the holes in the **Card** and the **Bracket**.
 - d. Insert the two **Screws** through the **PCIe Card** and into **Bracket**.
 - e. Tighten using a **Phillips Head Screwdriver**.
7. To install the **PCIe Card**, carefully align the **Card's PCIe x 4 Connector** with the selected **PCIe Slot** on the **Motherboard**. Push the **PCIe Card** down firmly to ensure the **PCIe Card** is properly seated into the **PCIe Slot**.
8. (To provide extra power to the **USB 3.1 Type-C Ports** for **Device** charging) Connect a **15 Pin SATA Power Connector** from the **Power Supply** to the **SATA Power Connector** on the **PCIe Card**.
9. Replace the **Slot Bracket Holding Screw** to secure the **PCIe Card**.
10. Replace the **Computer Cover** and reconnect the **Power Cord**.
11. Download the latest **Drivers**.

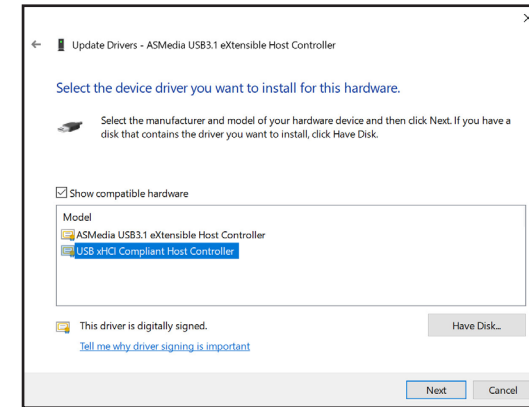
Driver Installation

You can download the latest **Drivers** from the startech.com website:

www.startech.com/PEXUSB312C3.

Installing the Driver in Windows 7

1. If the **Found New Hardware** dialog box appears on your screen, close the dialog box or click the **Cancel** button.
2. Navigate to the **Device Manager**.
3. On the list of installed devices, right-click on **ASMedia USB3.1 eXtensible Host Controller**.
4. Select **Update Driver** from the pop-up menu.
5. On the **How do you want to search for drivers** screen, select the **Browse my computer for driver software** link.
6. Click on the **Let me pick from a list of available drivers on my computer** link.
7. Select, **USB xHCI Compliant Host Controller**.



USB xHCI Compliant Host Controller

8. Click the **Next** Button.
9. Click the **Close** button once the installation is complete.

FCC Compliance Statement

This equipment has been tested and found to comply with the limits for a Class B digital device, pursuant to part 15 of the FCC Rules. These limits are designed to provide reasonable protection against harmful interference in a residential installation.

This equipment generates, uses and can radiate radio frequency energy and, if not installed and used in accordance with the instructions, may cause harmful interference to radio communications. However, there is no guarantee that interference will not occur in a particular installation. If this equipment does cause harmful interference to radio or television reception, which can be determined by turning the equipment off and on, the user is encouraged to try to correct the interference by one or more of the following measures:

- Connect the equipment into an outlet on a circuit different from that to which the receiver is connected.
- Consult the dealer or an experienced radio/TV technician for help

This device complies with part 15 of the FCC Rules. Operation is subject to the following two conditions:

(1) This device may not cause harmful interference, and (2) this device must accept any interference received, including interference that may cause undesired operation. Changes or modifications not expressly approved by StarTech.com could void the user's authority to operate the equipment.

Industry Canada Statement

This Class B digital apparatus complies with Canadian ICES-003.

Cet appareil numérique de la classe [B] est conforme à la norme NMB-003 du Canada.

CAN ICES-3 (B)/NMB-3(B)

This device complies with Industry Canada licence-exempt RSS standard(s). Operation is subject to the following two conditions:

(1) This device may not cause interference, and (2) This device must accept any interference, including interference that may cause undesired operation of the device.

Le présent appareil est conforme aux CNR d'Industrie Canada applicables aux appareils radio exempts de licence. L'exploitation est autorisée aux deux conditions suivantes:

(1) l'appareil ne doit pas produire de brouillage, et (2) l'utilisateur de l'appareil doit accepter tout brouillage radioélectrique subi, même si le brouillage est susceptible d'en compromettre le fonctionnement.

Use of Trademarks, Registered Trademarks, and other Protected Names and Symbols

This manual may make reference to trademarks, registered trademarks, and other protected names and/or symbols of third-party companies not related in any way to StarTech.com. Where they occur these references are for illustrative purposes only and do not represent an endorsement of a product or service by StarTech.com, or an endorsement of the product(s) to which this manual applies by the third-party company in question. StarTech.com hereby acknowledges that all trademarks, registered trademarks, service marks, and other protected names and/or symbols contained in this manual and related documents are the property of their respective holders.

PHILLIPS® is a registered trademark of Phillips Screw Company in the United States or other countries.

Warranty Information

This product is backed by a two-year warranty.

For further information on product warranty terms and conditions, please refer to www.startech.com/warranty.

Limitation of Liability

In no event shall the liability of StarTech.com Ltd. and StarTech.com USA LLP (or their officers, directors, employees or agents) for any damages (whether direct or indirect, special, punitive, incidental, consequential, or otherwise), loss of profits, loss of business, or any pecuniary loss, arising out of or related to the use of the product exceed the actual price paid for the product. Some states do not allow the exclusion or limitation of incidental or consequential damages. If such laws apply, the limitations or exclusions contained in this statement may not apply to you.

Safety Measures

- If product has an exposed circuit board, do not touch the product under power.

Mesures de sécurité

- Si l'un des circuits imprimés du produit est visible, ne pas touchez le produit lorsqu'il est sous tension.

安全対策

- 製品に露出した状態の回路基盤が含まれる場合、電源が入っている状態で製品に触らないでください。

Misure di sicurezza

- Se il prodotto ha un circuito stampato visibile, non toccare il prodotto quando è acceso.

Säkerhetsåtgärder

- Rör aldrig vid enheter med oskyddade kretskort när strömmen är påslagen.

StarTech.com Ltd.

45 Artisans Cres
London, Ontario
N5V 5E9
Canada

StarTech.com LLP

2500 Creekside
Parkwy
Lockbourne, Ohio
43137
U.S.A.

StarTech.com Ltd.

Unit B, Pinnacle 15
Gowerton Rd,
Brackmills
Northampton
NN4 7BW
United Kingdom

FR: fr.startech.com

DE: de.startech.com

ES: es.startech.com

NL: nl.startech.com

IT: it.startech.com

JP: jp.startech.com