



Questo manuale d'istruzione è fornito da trovaprezzi.it. Scopri tutte le offerte per [TP-Link EAP115-Wall](#) o cerca il tuo prodotto tra le [migliori offerte di Altri dispositivi di rete](#)



Questo manuale d'istruzione è fornito da trovaprezzi.it. Scopri tutte le offerte per [TP-Link EAP115-Wall](#) o cerca il tuo prodotto tra le [migliori offerte di Wireless e Bluetooth](#)



Quick Installation Guide

Wireless Wall Plate Access Point



Setup with videos

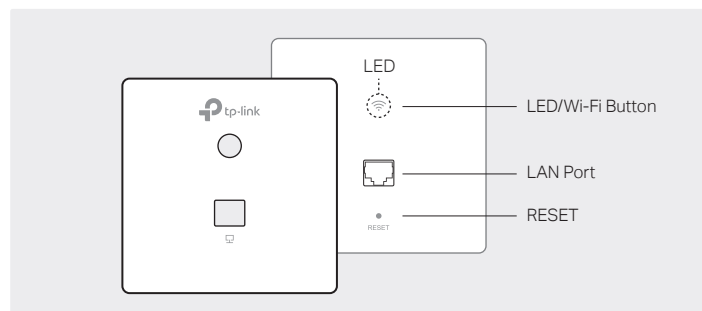
Scan QR code or visit <https://www.tp-link.com/support/setup-video/>



Note: The image may differ from the actual product.

1 Hardware Overview

Front Panel



LED/Wi-Fi Button

When the EAP is working in Standalone Mode and enabled with Wi-Fi Control, press the button to turn on/off both the Wi-Fi and LED. In the other cases, press the button to turn on/off the LED only.

LAN Port

A wired device can be connected to the LAN port via an Ethernet cable and access the network.

RESET

With the EAP powered on, press and hold the button for about 5 seconds until the LED flashes, then release the button. The EAP will restore to factory default settings.

LED Indicator

On: Working normally/Initializing.

Off: Working abnormally/Power off/LED is turned off.

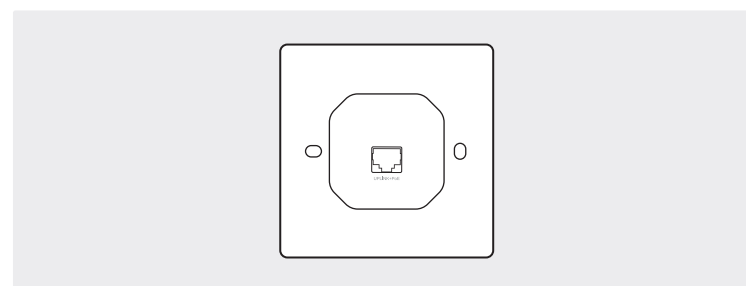
Flashing:

Initialization: The LED flashes twice after initialization is completed.

Upgrade: The LED flashes once per second while upgrading.

Reset: The LED flashes three times per second during the reset. The EAP will then reboot.

Rear Panel



UPLINK+PoE Port

Connected to a PSE (Power Sourcing Equipment), such as a PoE switch, for both data transmission and Power.

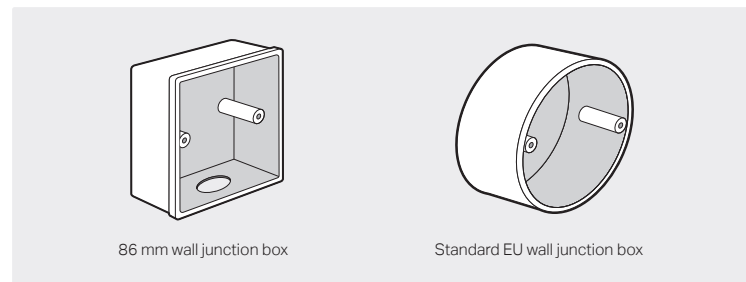
2 Pre-Installation Checklist

Before installation, be sure that you have the following items:

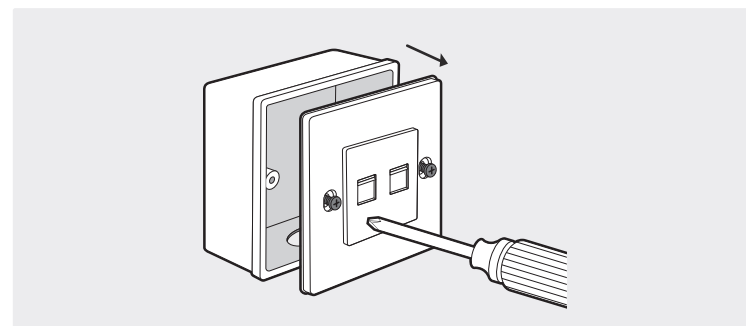
- A pre-installed wall junction box
- An RJ45 plug
- A Phillips screwdriver
- A PoE switch
- A triangular screwdriver

3 Installation Steps

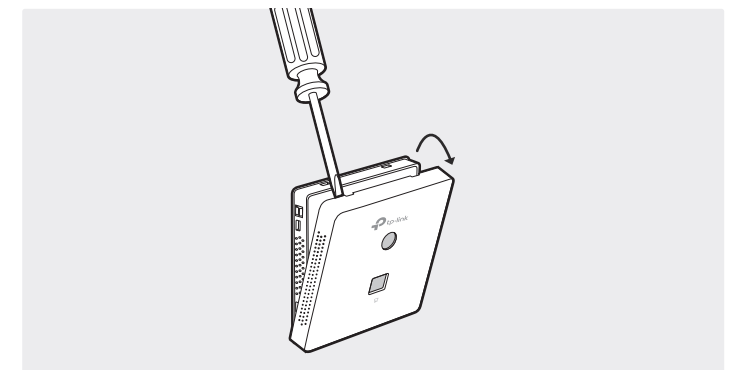
The EAP can be mounted into either an 86 mm wall junction box or a standard EU wall junction box. The junction box should be pre-installed with a running-in-wall Ethernet cable connected to a PoE switch.



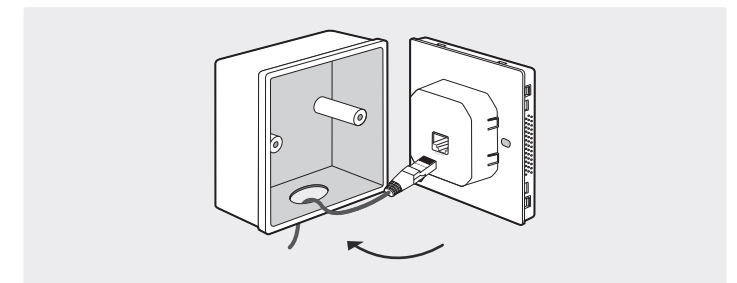
1. Detach the faceplate of the junction box with a Phillips screwdriver (demonstrated with an 86mm wall junction box).



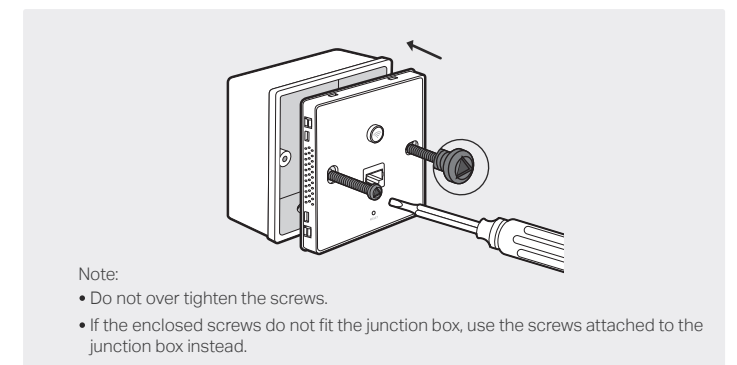
2. Detach the faceplate of the EAP with a screwdriver.



3. Connect the Ethernet cable inside the junction box to an RJ45 plug. Then connect the cable to the UPLINK+PoE port. Position the Ethernet cable to ensure it is not strained.



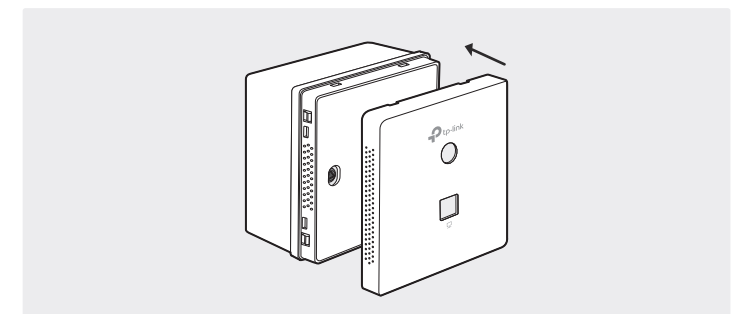
4. Insert the enclosed screws and tighten them with a triangular screwdriver to secure the mounting bracket.



Note:

- Do not over tighten the screws.
- If the enclosed screws do not fit the junction box, use the screws attached to the junction box instead.

5. Press the faceplate of the EAP back into position.



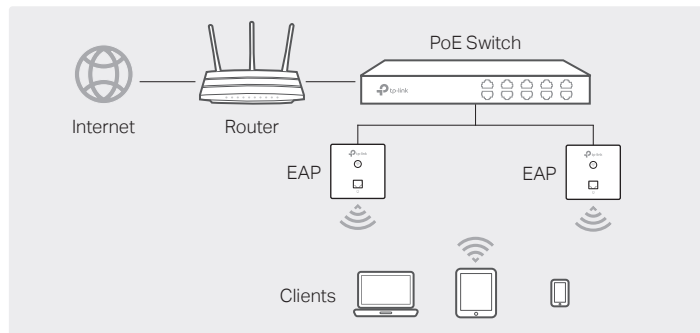
4 Software Configuration

A DHCP server (typically a router with DHCP function enabled) is required to assign IP addresses to the EAPs and clients in your local network.

The EAP supports two configuring options:

- To manage EAPs singly (usually suitable for a small network with a few EAPs), Standalone Mode is recommended. Please refer to Option 1.
- To manage EAPs in batch, Controller Mode is recommended. Please refer to Option 2.

Option1: Standalone Mode



Via Omada App

1. Download the TP-Link Omada app on your mobile device. It can be downloaded from Apple Store or Google Play:



2. Connect your mobile device to the EAP by using the default SSID (format: TP-Link_2.4GHz/5GHz_XXXXXX) printed on the label at the bottom of the product.
3. Open the Omada app, and wait for the EAP to appear on the **Standalone APs** page. Tap on the EAP you want to configure.

The Omada app is designed to help you quickly configure the common settings. If you want to configure advanced settings, log in to the web page of your EAP or the controller.

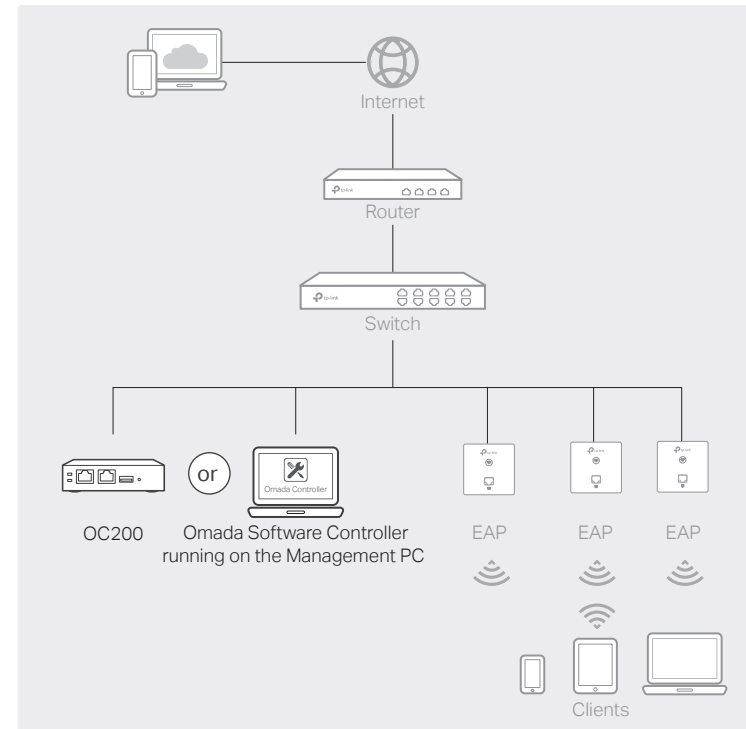
Via a Web Browser

1. Connect wirelessly by using the default SSID (format: TP-Link_2.4GHz/5GHz_XXXXXX) printed on the label at the bottom of the product.
2. Launch a web browser and enter <http://tplinkeap.net> in the address bar. Use **admin** for both Username and Password to log in.
3. Set up a new Username and Password for secure management purpose. Modify the wireless parameters and reconnect your wireless devices to the new wireless network.

To configure other EAPs, connect your device to the EAP by the corresponding default SSID and repeat the steps listed above. You can configure some basic functions in Standalone mode. If you want to configure advanced functions, use Controller Mode.

Option2: Controller Mode

Controller Mode is applicable to configuration for mass EAPs. All EAPs can be centrally configured and monitored via an Omada Software Controller or an Omada Hardware Controller (OC200).



Via Software Controller

1. On the PC with Windows OS or Linux OS, download the Omada Controller installation file from <https://www.tp-link.com/download/EAP-Controller.html>.
2. Run the file and follow the wizard to install the Omada Controller.
3. Launch the Omada Controller and follow the step-by-step instructions to complete the Quick Setup. After the wizard is finished, a login screen will appear.
4. Enter the username and password you created and click **Log in**. Then you can further configure the Omada Controller.

Omada Cloud Service

After installing Omada Controller, you can remotely configure the controller through cloud service when your management device can access the internet. Follow the steps below.

1. Enable Cloud Access on the setting page on the controller and bind a TP-Link ID to your controller. If you have configured this in the setup wizard, skip the step.
2. Launch a web browser and enter <https://omada.tplinkcloud.com> in the address bar.
3. Enter your TP-Link ID and password to log in. A list of Omada Controller that has been bound with your TP-Link ID will appear. Then you can click **Launch** to further configure the controller.

* Omada App

With Omada app, you can also manage your Omada Controller at a local site and remote site. Note that Omada Software Controller needs to be kept running when using Omada app.

1. Download the TP-Link Omada app on your mobile device. It can be downloaded from Apple Store or Google Play:



2. Launch your app and configure the controller at a local site or remote site.

• Local Management

- a. Connect your mobile device to the EAP by using the default SSID (format: TP-Link_2.4GHz/5GHz_XXXXXX) printed on the label at the bottom of the product.
- b. Launch the app and go to **Local Access**, tap the **+** button on the upper-right corner to add the Omada controller. Then you can further configure the controller.


• Remote Management


- a. Make sure Cloud Access is enabled on your controller and your controller has been bound with a TP-Link ID.
- b. Launch the app and log in with your TP-Link ID. Then go to **Cloud Access**. A list of Omada Controller that has been bound with your TP-Link ID will appear. Then you can further configure the controller.

Via OC200

Omada Hardware Controller (OC200), which is pre-installed with the Omada Software Controller, is a good alternative for the Software Controller if you have no spare PC to keep running in the network. It needs to be purchased additionally. For more details, refer to the Installation Guide of Omada Hardware Controller.

For detailed configurations, please visit <https://www.tp-link.com/support> to download the User Guide of EAP in the download center.

 To ask questions, find answers, and communicate with TP-Link users or engineers, please visit <https://community.tp-link.com> to join TP-Link Community.

 For technical support, the user guide and other information, please visit <https://www.tp-link.com/support>, or simply scan the QR code.

 If you have any suggestions or needs on the product guides, welcome to email techwriter@tp-link.com.cn.

Safety Information

- Keep the device away from water, fire, humidity or hot environments.
- Do not attempt to disassemble, repair, or modify the device.
- Do not use the device where wireless devices are not allowed.

The products of TP-Link partly contain software code developed by third parties, including software code subject to the GNU General Public License ("GPL"). As applicable, the terms of the GPL and any information on obtaining access to the respective GPL Code used in TP-Link products are available to you in GPL-Code-Centre under (<https://www.tp-link.com/en/support/gpl/>). The respective programs are distributed WITHOUT ANY WARRANTY and are subject to the copyrights of one or more authors. For details, see the GPL Code and other terms of the GPL.

