



Questo manuale d'istruzione è fornito da trovaprezzi.it. Scopri tutte le offerte per [ZyXEL MG-108](#) o cerca il tuo prodotto tra le [migliori offerte di Switch](#)



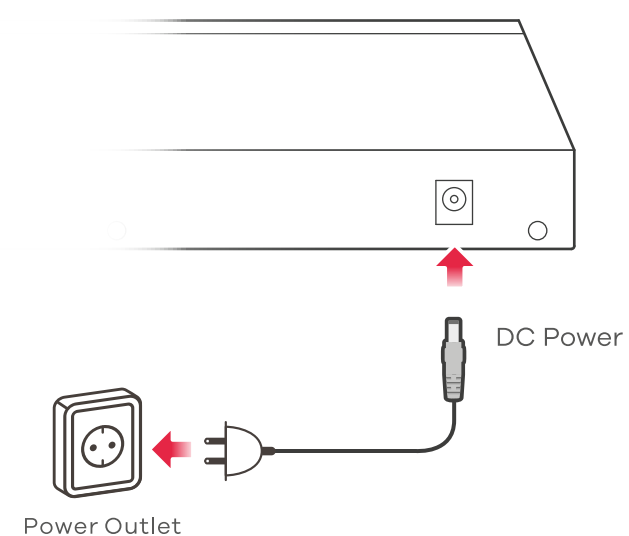
Questo manuale d'istruzione è fornito da trovaprezzi.it. Scopri tutte le offerte per [ZyXEL MG-108](#) o cerca il tuo prodotto tra le [migliori offerte di Switch](#)

ZYXEL Desktop Switch Series

Quick Start Guide

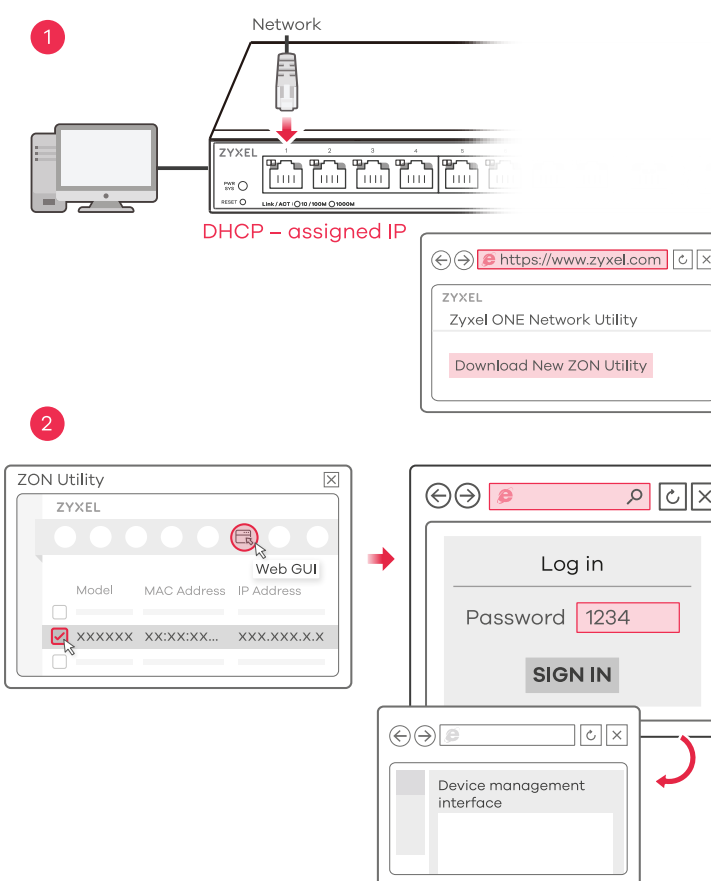
ENGLISH | DEUTSCH | ESPAÑOL | FRANÇAIS
ITALIANO

1 Hardware Installation



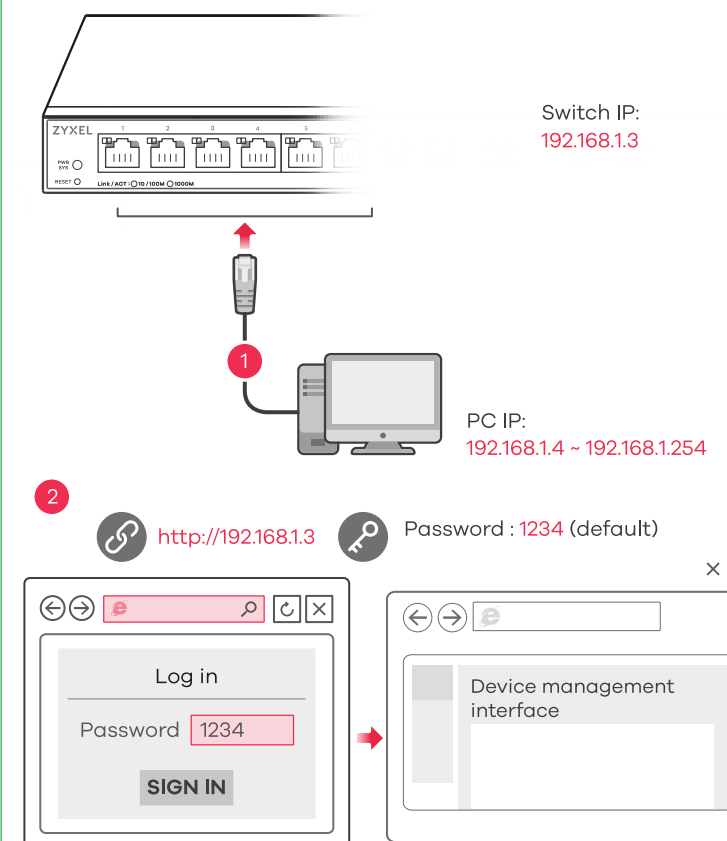
Option A Managed with ZON Utility for DHCP Environment

(For Web Managed Switch Only)



Option B Managed with Switch Default Static IP

(For Web Managed Switch Only)



Troubleshooting

I cannot see or access the Login screen in the Web Configurator.

- Make sure you are using the correct IP address. (The default IP address is 192.168.1.3.)
- Make sure your computer is in the same subnet as the Switch. If you haven't changed the default IP address, your computer IP address should be in the 192.168.1.4 ~ 192.168.1.254 range.
- Make sure you have entered the **Password** correctly. If you have changed the **Password** and have forgotten it, you'll have to reset the Switch to its factory default. (The default **Password** is 1234.)

A loop is detected.

- A loop may happen in the following example situations:
 1. The Switch is connected to another device in a loop state.
 2. The Switch is connected to another device with two cables.
- **Loop Prevention** is enabled by default. If a loop happens, the Switch will block the port in a loop state. If a loop happens on two ports, the Switch will block the higher-numbered port. For example, if a loop happens on ports 4 and 5, the Switch will block port 5, and its LED will be off. To restore a port in a loop state, disconnect it, check the network connections, and reconnect it.
- You can log into the Web Configurator. Go to **System** in the Web Configurator to check your port status.

ZYXEL

Your Networking Ally

Warranty Card



Thank you for purchasing a Zyxel product. Zyxel has a reputation for delivering high quality, high performance products and services to our customers. We recommend that you now visit the Zyxel website and register your product online. This will mean you can receive the latest firmware, drivers and product related information. If you still have further questions or enquiries related to the product, please contact our subsidiaries worldwide. Please note that warranty terms may vary by region. Full detailed information is available on our website, here: http://www.zyxel.com/support/warranty_information.shtml

Purchase Information

Zyxel Product Name:

Hardware Serial Number:

Date of Purchase:

(In certain countries, the warranty will be validated with seller's signature and stamp):

EN Connect to an appropriate power source. Connect to a modem or router that has internet access.

DE An eine geeignete Stromquelle anschließen. An ein Modem oder einen Router mit Internetanschluss anschließen.

ES Conecte a una fuente de corriente apropiada. Conectar a un módem o router con acceso a Internet.

FR Connectez-vous à une source d'alimentation appropriée. Connectez-vous à un modem ou un routeur ayant accès à Internet.

IT Collegare ad una fonte di alimentazione appropriata. Connettersi a un modem o router con accesso Internet.

EN 1 Connect the Switch and your computer to the same network that has a DHCP server.

DE 1 Verbinden Sie den Switch und Ihren Computer mit demselben Netzwerk, das über einen DHCP-Server verfügt.

ES 1 Conecte el conmutador y su ordenador a una red que tenga un servidor DHCP.

FR 1 Connectez le commutateur et votre ordinateur au même réseau doté d'un serveur DHCP.

IT 1 Collegare lo Switch e il computer alla stessa rete che dispone di un server DHCP.

EN 2 Use the ZON utility to discover the Switch. Select the Switch and click the **Web GUI** icon to access its web configurator.

DE 2 Verwenden Sie das ZON-Dienstprogramm, um den Switch zu entdecken. Wählen Sie den Schalter und klicken Sie auf das **Web GUI** Symbol, um auf den Web-Konfigurator zuzugreifen.

ES 2 Utilice la utilidad ZON para descubrir el conmutador. Seleccione el conmutador y haga clic en el icono **Web GUI** para acceder al configurador web.

FR 2 Utilisez l'utilitaire ZON pour découvrir le commutateur. Sélectionnez le commutateur et cliquez sur l'icône de **l'interface graphique Web** pour accéder à son configurateur Web.

IT 2 Usare l'utilità ZON per scoprire lo Switch. Selezionare lo Switch e cliccare l'icona **Web GUI** per accedere al configuratore web.

EN 1 Connect your computer to the Switch using an Ethernet cable. Your computer must have an IP address in the same subnet as the Switch.

DE 1 Verwenden Sie ein Ethernet-Kabel, um den Computer mit dem Switch zu verbinden. Ihr Computer muss eine IP-Adresse im gleichen Subnetz wie der Switch selbst haben.

ES 1 Conecte su ordenador al conmutador usando un cable Ethernet. Su ordenador debe tener una dirección IP en la misma subred que el conmutador.

FR 1 Connectez votre ordinateur au commutateur à l'aide d'un câble Ethernet. Votre ordinateur doit disposer d'une adresse IP dans le même sous-réseau que le commutateur.

IT 1 Collegare il computer allo Switch utilizzando un cavo Ethernet. Il computer deve avere un indirizzo IP nella stessa sottorete dello switch.

EN 2 Launch your web browser and go to <http://192.168.1.3>. Enter 1234 as the password. Click **SIGN IN**.

DE 2 Starten Sie Ihre Web Browser und gehen Sie auf <http://192.168.1.3>. Geben Sie admin als den Anmeldenamen und 1234 als das Passwort ein. Klicken Sie auf **SIGN IN**.

ES 2 Abra el navegador web y vaya a <http://192.168.1.3>. Escriba el nombre de usuario admin y la contraseña 1234. Haga clic en **SIGN IN**.

FR 2 Lancez votre navigateur web et allez à <http://192.168.1.3>. Entrez admin comme nom d'utilisateur et 1234 comme mot de passe. Cliquez sur **SIGN IN**.

IT 2 Avviare il browser e inserire l'indirizzo <http://192.168.1.3>. Immettere admin come nome utente e 1234 come password. Fare clic su **SIGN IN**.

Support Information

USA +1 800 255 4101
EU <https://support.zyxel.eu>
support@zyxel.com

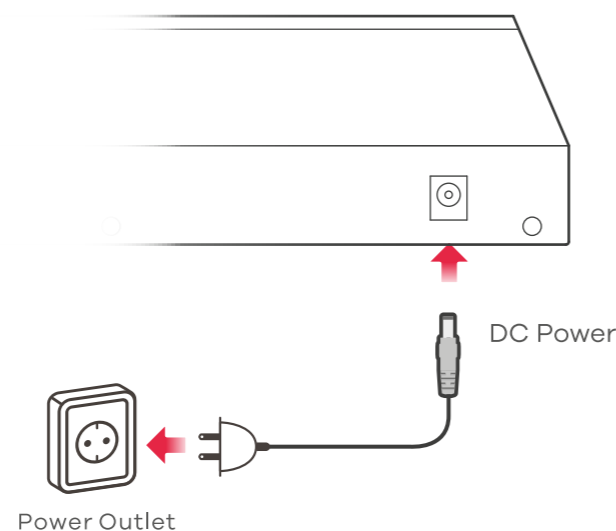
EU Importer
Zyxel Communications A/S
Gladsaxevej 37B, 2. th. 2860 Søborg, Denmark
<https://www.zyxel.com/dk/da/>

US Importer
Zyxel Communications, Inc
1130 North Miller Street Anaheim, CA 92806-2001
<https://www.zyxel.com/us/en/>

Copyright © 2021 Zyxel Communications Corp. All Rights Reserved.



1 Hardware Installation



Warranty Card



Thank you for purchasing a Zyxel product. Zyxel has a reputation for delivering high quality, high performance products and services to our customers. We recommend that you now visit the Zyxel website and register your product online. This will mean you can receive the latest firmware, drivers and product related information. If you still have further questions or enquiries related to the product, please contact our subsidiaries worldwide. Please note that warranty terms may vary by region. Full detailed information is available on our website, here: http://www.zyxel.com/support/warranty_information.shtml

Purchase Information

Zyxel Product Name:

Hardware Serial Number:

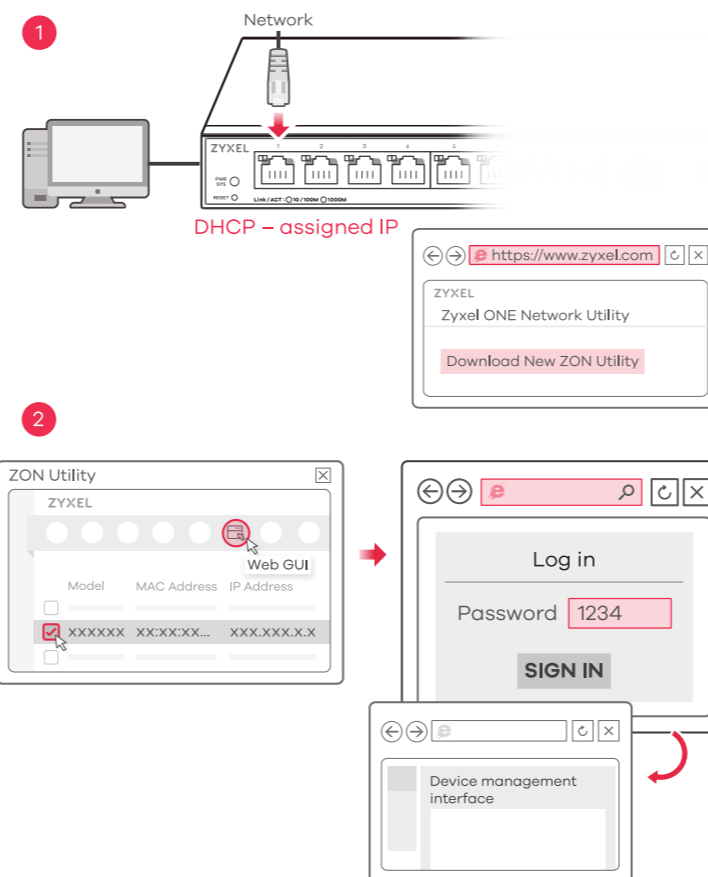
Date of Purchase:

(In certain countries, the warranty will be validated with seller's signature and stamp):

- NL** Sluit aan op een geschikte stroombron. Sluit aan op een modem of router met internetverbinding.
- SE** Anslut till en lämplig strömkälla. Anslut till ett modem eller en router med Internet-åtkomst.
- RU** Подключите коммутатор к надлежащему источнику питания. Подключите модем или роутер, имеющий доступ в интернет.
- UA** Підключіть комутатор до належного джерела живлення. Підключіть його до модему або роутеру з доступом в інтернет.

Option A Managed with ZON Utility for DHCP Environment

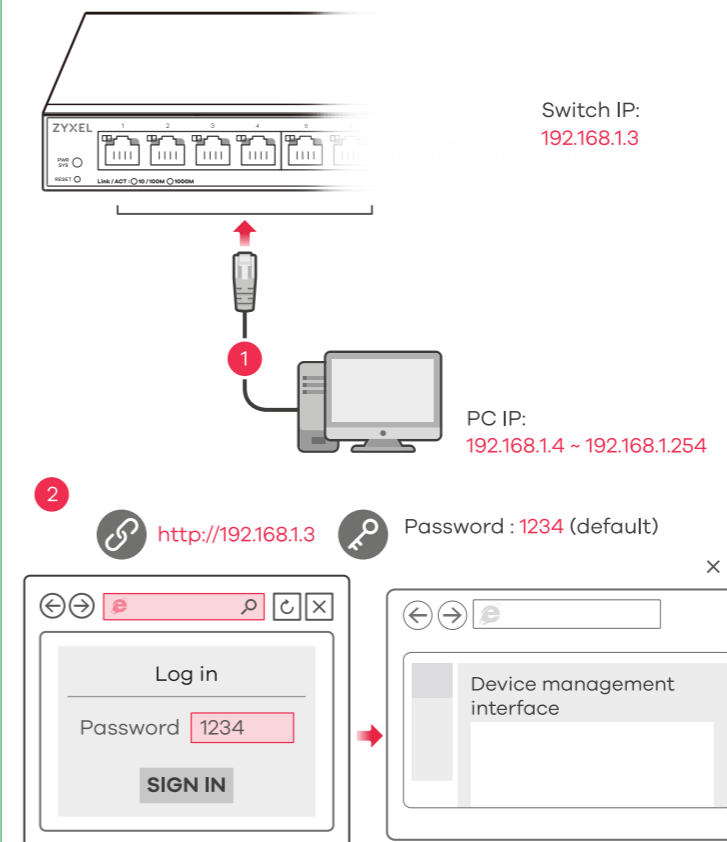
(For Web Managed Switch Only)



- NL**
 - 1 Verbind de switch en uw computer met hetzelfde netwerk met een DHCP-server.
 - 2 Gebruik het ZON programma om de switch te vinden. Selecteer de switch en klik op het **Web GUI** pictogram om toegang tot de web interface te krijgen.
- SE**
 - 1 Anslut switchen och datorn till samma nätverk, som har en DHCP-server.
 - 2 Använd ZON-verktyget för att hitta switchen. Välj switchen och klicka på ikonen **Web GUI** för att öppna dess webb-konfigurator.
- RU**
 - 1 Подключите коммутатор и компьютер к одной и той же сети, в которой имеется DHCP-сервер.
 - 2 С помощью утилиты ZON выполните обнаружение коммутатора. Выберите коммутатор и нажмите ярлык **Web GUI** для получения доступа к веб-конфигуратору коммутатора.
- UA**
 - 1 Підключіть комутатор і комп'ютер до однієї і тієї ж мережі, в якій є DHCP-сервер.
 - 2 За допомогою утиліти ZON виконайте виявлення пристроїв. Виберіть комутатор і натисніть кнопку **Web GUI** для отримання доступу до його веб-конфігуратору.

Option B Managed with Switch Default Static IP

(For Web Managed Switch Only)



- NL**
 - 1 Sluit uw computer aan op de Schakelaar met een Ethernet-kabel. Uw computer dient een IP-adres te hebben in hetzelfde subnet als de Schakelaar.
 - 2 Open uw webbrowser en ga naar <http://192.168.1.3>. Voer 1234 in als wachtwoord. Klik op **AANMELDEN**.
- SE**
 - 1 Anslut datorn till switchen med en Ethernet-kabel. Datorn måste ha en IP-adress i samma subnät som switchen.
 - 2 Starta din webbläsare och gå till sidan <http://192.168.1.3>. Skriv in 1234 som lösenord. Klicka på **LOGGA IN**.
- RU**
 - 1 Подключите коммутатор к компьютеру с помощью кабеля Ethernet. IP-адрес компьютера должен находиться в той же подсети, что и IP-адрес коммутатора.
 - 2 Запустите веб-браузер и перейдите на сайт <http://192.168.1.3>. Введите 1234 (пароль по умолчанию) в поле Password (Пароль) и щелкните на кнопке **SIGN IN** (Вход).
- UA**
 - 1 Підключіть комп'ютер до комутатора за допомогою кабелю Ethernet. На комп'ютері повинна бути встановлена IP-адреса з тієї ж підмережі, що і на комутаторі.
 - 2 Відкрийте веб-браузер і перейдіть на <http://192.168.1.3>. Введіть 1234 в рядку пароля (Password). Натисніть кнопку УВІЙТИ (**SIGN IN**).

Troubleshooting

- I cannot see or access the Login screen in the Web Configurator.**
- Make sure you are using the correct IP address. (The default IP address is 192.168.1.3.)
 - Make sure your computer is in the same subnet as the Switch. If you haven't changed the default IP address, your computer IP address should be in the 192.168.1.4 ~ 192.168.1.254 range.
 - Make sure you have entered the **Password** correctly. If you have changed the **Password** and have forgotten it, you'll have to reset the Switch to its factory default. (The default **Password** is 1234.)

A loop is detected.

- A loop may happen in the following example situations:
 1. The Switch is connected to another device in a loop state.
 2. The Switch is connected to another device with two cables.
- **Loop Prevention** is enabled by default. If a loop happens, the Switch will block the port in a loop state. If a loop happens on two ports, the Switch will block the higher-numbered port. For example, if a loop happens on ports 4 and 5, the Switch will block port 5, and its LED will be off. To restore a port in a loop state, disconnect it, check the network connections, and reconnect it.
- You can log into the Web Configurator. Go to **System** in the Web Configurator to check your port status.

Support Information

EU, Turkey and Russia

✉ <https://support.zyxel.eu>

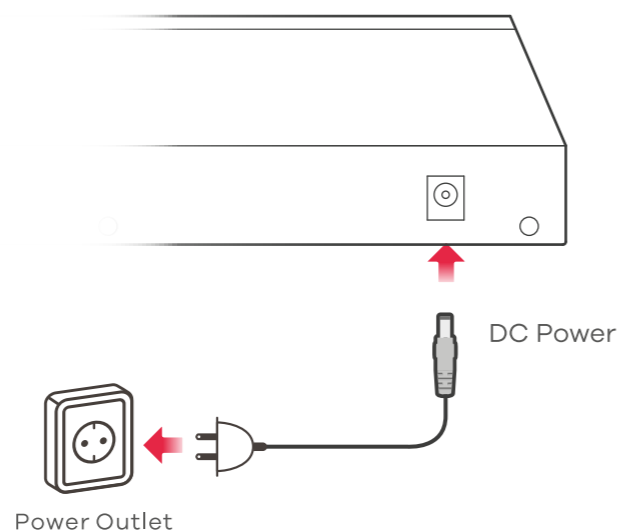
EU Importer

Zyxel Communications A/S
Gladsaxevej 378, 2. th. 2860 Søborg, Denmark
<https://www.zyxel.com/dk/da/>

US Importer

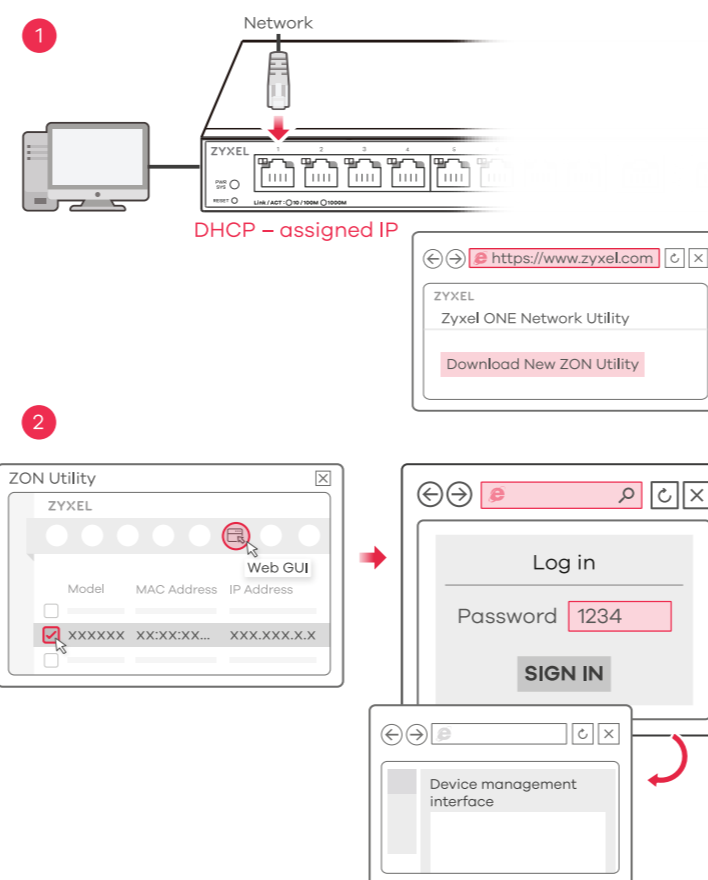
Zyxel Communications, Inc
1130 North Miller Street Anaheim, CA 92806-2001
<https://www.zyxel.com/us/en/>

1 Hardware Installation



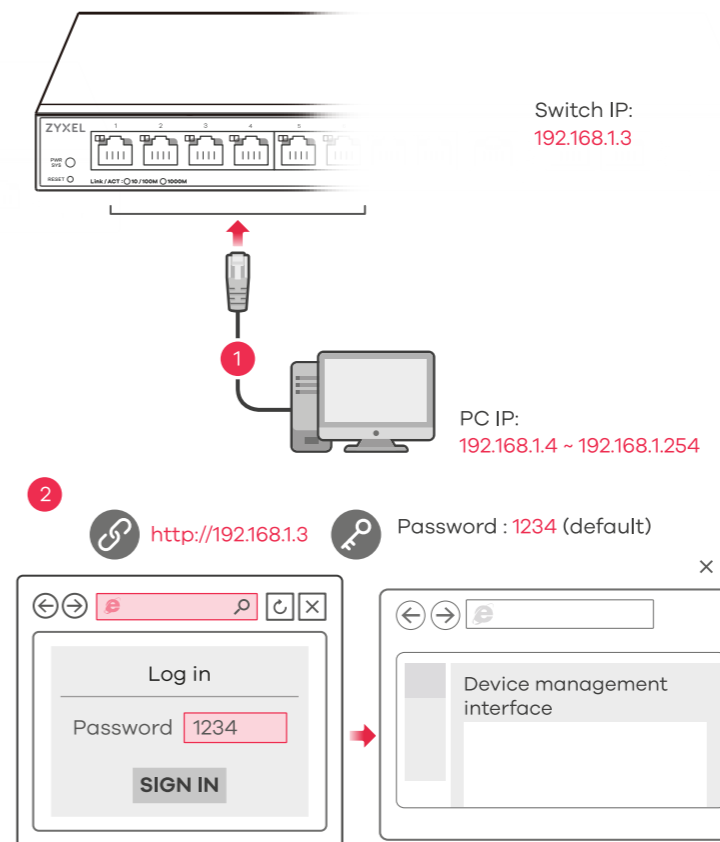
Option A Managed with ZON Utility for DHCP Environment

(For Web Managed Switch Only)



Option B Managed with Switch Default Static IP

(For Web Managed Switch Only)



Troubleshooting

I cannot see or access the Login screen in the Web Configurator.

- Make sure you are using the correct IP address. (The default IP address is 192.168.1.3.)
- Make sure your computer is in the same subnet as the Switch. If you haven't changed the default IP address, your computer IP address should be in the 192.168.1.4 ~ 192.168.1.254 range.
- Make sure you have entered the **Password** correctly. If you have changed the **Password** and have forgotten it, you'll have to reset the Switch to its factory default. (The default **Password** is 1234.)

A loop is detected.

- A loop may happen in the following example situations:
 1. The Switch is connected to another device in a loop state.
 2. The Switch is connected to another device with two cables.
- **Loop Prevention** is enabled by default. If a loop happens, the Switch will block the port in a loop state. If a loop happens on two ports, the Switch will block the higher-numbered port. For example, if a loop happens on ports 4 and 5, the Switch will block port 5, and its LED will be off. To restore a port in a loop state, disconnect it, check the network connections, and reconnect it.
- You can log into the Web Configurator. Go to **System** in the Web Configurator to check your port status.



Warranty Card

Thank you for purchasing a Zyxel product. Zyxel has a reputation for delivering high quality, high performance products and services to our customers. We recommend that you now visit the Zyxel website and register your product online. This will mean you can receive the latest firmware, drivers and product related information. If you still have further questions or enquiries related to the product, please contact our subsidiaries worldwide. Please note that warranty terms may vary by region. Full detailed information is available on our website, here: http://www.zyxel.com/support/warranty_information.shtml

Purchase Information

Zyxel Product Name:

Hardware Serial Number:

Date of Purchase:

(In certain countries, the warranty will be validated with seller's signature and stamp):

- CZ** Připojte do odpovídajícího zdroje energie. Zapojte do modemu nebo směrovače s přístupem k internetu.
- HU** Csatlakoztasson egy megfelelő áramforrást. Csatlakoztasson egy internetkapcsolattal rendelkező modemet vagy útválasztót.
- PL** Podłącz do odpowiedniego źródła zasilania. Podłącz do modemu lub routera z dostępem do Internetu.
- SK** Pripojte k vhodnému zdroju napájania. Pripojte k modemu alebo smerovaču s prístupom do internetu.

- CZ**
 - 1 Připojte prepínač a počítač ke stejné síti, která má server DHCP.
 - 2 Ke zjištění prepínače použijte funkci ZON. Vyberte daný prepínač a kliknutím na ikonu **Web GUI** otevřete webový konfigurator.
- HU**
 - 1 Csatlakoztassa a switchet és számítógépét ugyanahhoz a DHCP kiszolgálót tartalmazó hálózathoz.
 - 2 A ZON alkalmazással keresse meg a switchet. Válassza ki a switchet és kattintson a **Web GUI** ikonra a weben keresztül beállításához.
- PL**
 - 1 Podłącz przełącznik i komputer do tej samej sieci, w której znajduje się serwer DHCP.
 - 2 Do wykrywania przełącznika używaj narzędzia ZON. Wybierz przełącznik i kliknij ikonę **Web GUI**, aby uzyskać dostęp do konfiguratora internetowego.
- SK**
 - 1 Prepínač a počítač pripojte k rovnakej sieti so serverom DHCP.
 - 2 Na zistenie prepínača použite pomôcku ZON. Zvoľte prepínač a kliknite na ikonu **Web GUI** (Webové grafické používateľské rozhranie) na získanie prístupu do nástroja Web Configurator (Webový nástroj na konfiguráciu).

- CZ**
 - 1 Kabelem síť Ethernet připojte počítač nebo notebook k prepínači. Počítač musí mít stejnou IP adresu ve stejné podsíti jako prepínač.
 - 2 Spustte webový prohlížeč a přejděte na <http://192.168.1.3>. Jako heslo zadejte 1234. Klikněte na možnost **SIGN IN (Přihlásit se)**.
- HU**
 - 1 Csatlakoztassa számítógépét a switch-hez egy Ethernet kábellel. Számítógépének a switch alhálózatához tartozó IP címmel kell rendelkeznie.
 - 2 Spustte webový prohlížeč a přejděte na <http://192.168.1.3>. Jako heslo zadejte 1234. Klikněte na možnost **SIGN IN (Přihlásit se)**.
- PL**
 - 1 Podłącz komputer lub notebook do przełącznika, korzystając z kabla sieciowego. Komputer musi mieć adres IP w tej samej podsieci, co przełącznik.
 - 2 Lansați navigatorul dvs. web și accesați <http://192.168.1.3>. Introduceți 1234 ca parolă. Dați clic pe **SIGN IN (AUTENTICARE)**.
- SK**
 - 1 Pomocou kábla siete Ethernet pripojte svoj počítač k zariadeniu Switch. Adresa IP vášho počítača musí byť v rámci rovnakej podsiete ako je zariadenie Switch.
 - 2 Otvórz przeglądarkę internetową i wpisz adres <http://192.168.1.3>. Podaj hasło 1234. Kliknij **SIGN IN (zaloguj się)**.

Support Information

EU

<https://support.zyxel.eu>

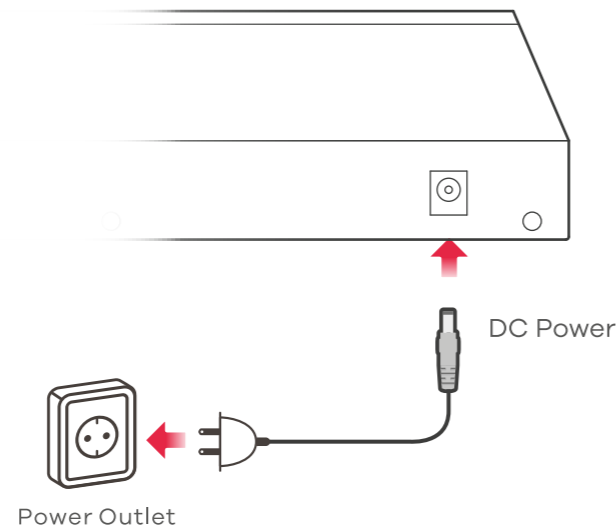
EU Importer

Zyxel Communications A/S
Gladsaxevej 378, 2. th. 2860 Søborg, Denmark
<https://www.zyxel.com/dk/da/>

US Importer

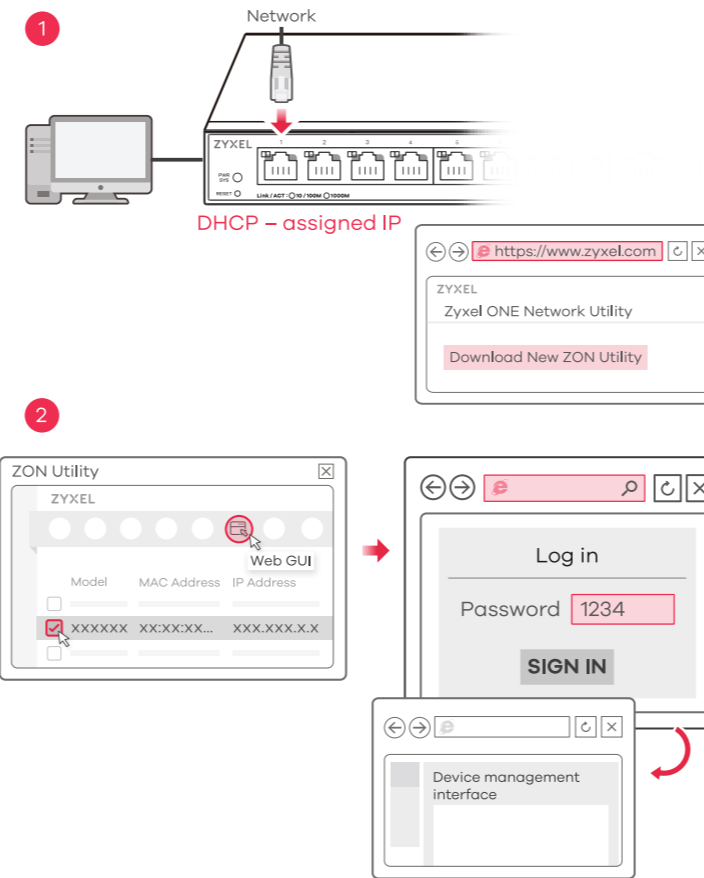
Zyxel Communications, Inc
1130 North Miller Street Anaheim, CA 92806-2001
<https://www.zyxel.com/us/en/>

1 Hardware Installation



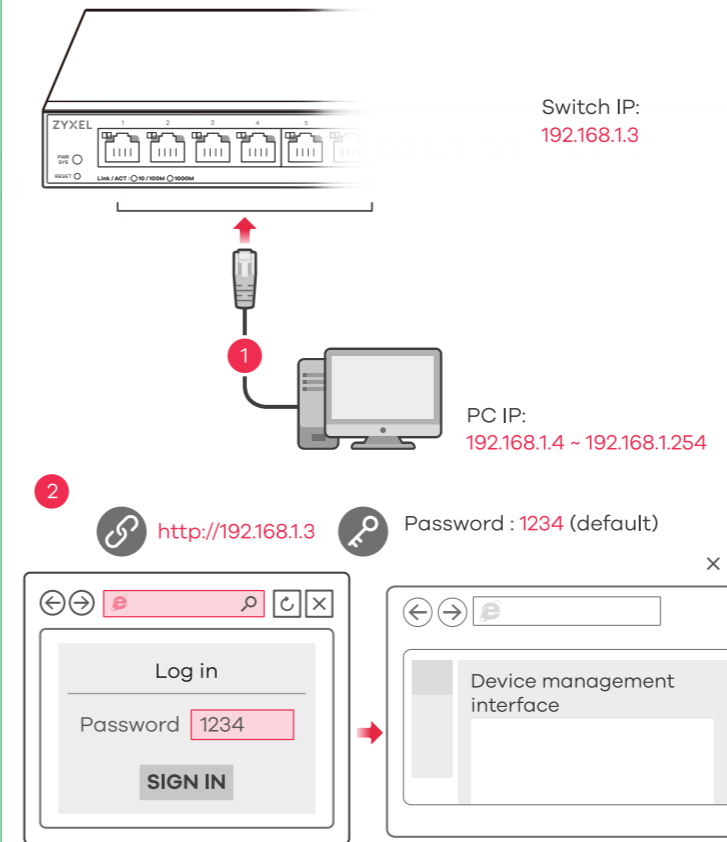
Option A Managed with ZON Utility for DHCP Environment

(For Web Managed Switch Only)



Option B Managed with Switch Default Static IP

(For Web Managed Switch Only)



Troubleshooting

- I cannot see or access the Login screen in the Web Configurator.**
- Make sure you are using the correct IP address. (The default IP address is 192.168.1.3.)
 - Make sure your computer is in the same subnet as the Switch. If you haven't changed the default IP address, your computer IP address should be in the 192.168.1.4 ~ 192.168.1.254 range.
 - Make sure you have entered the **Password** correctly. If you have changed the **Password** and have forgotten it, you'll have to reset the Switch to its factory default. (The default **Password** is 1234.)

A loop is detected.

- A loop may happen in the following example situations:
 1. The Switch is connected to another device in a loop state.
 2. The Switch is connected to another device with two cables.
- **Loop Prevention** is enabled by default. If a loop happens, the Switch will block the port in a loop state. If a loop happens on two ports, the Switch will block the higher-numbered port. For example, if a loop happens on ports 4 and 5, the Switch will block port 5, and its LED will be off. To restore a port in a loop state, disconnect it, check the network connections, and reconnect it.
- You can log into the Web Configurator. Go to **System** in the Web Configurator to check your port status.



Warranty Card

Thank you for purchasing a Zyxel product. Zyxel has a reputation for delivering high quality, high performance products and services to our customers. We recommend that you now visit the Zyxel website and register your product online. This will mean you can receive the latest firmware, drivers and product related information. If you still have further questions or enquiries related to the product, please contact our subsidiaries worldwide. Please note that warranty terms may vary by region. Full detailed information is available on our website, here: http://www.zyxel.com/support/warranty_information.shtml

Purchase Information

Zyxel Product Name:

Hardware Serial Number:

Date of Purchase:

(In certain countries, the warranty will be validated with seller's signature and stamp):

- TR** Uygun bir güç kaynağına bağlayın. İnternet erişimi olan bir modeme veya yönlendiriciye bağlayın.
- TH** เชื่อมต่อไปยังแหล่งจ่ายไฟที่เหมาะสม. เชื่อมต่อกับโมเด็มหรือเราเตอร์ที่มีการเข้าถึงอินเทอร์เน็ต.
- 繁中** 連接至適當的電源插座。連接至可存取網際網路的數據機或路由器。

- TR**
 - 1 Switch ve bilgisayarınızı DHCP sunucusu olan aynı ağa bağlayın.
 - 2 Switch'i bulmak için ZON yardımcı programını kullanın Switch'i seçin ve web yapılandırıcısına erişmek için **Web GUI** simgesini tıklayın.
- TH**
 - 1 เชื่อมต่อสวิตช์เข้ากับเครื่องคอมพิวเตอร์ของคุณที่อยู่ใระบบเครือข่ายที่มี DHCP Server.
 - 2 ใช้ซอฟต์แวร์ ZON Utility เพื่อค้นหาสวิตช์ เลือกสวิตช์และคลิกไอคอน **Web GUI** เพื่อเข้าไปยังหน้าจอการตั้งค่า.
- 繁中**
 - 1 將Switch和您的電腦連接到具有DHCP 服務的網路。下載並安裝 Zyxel ZON 工具軟體。
 - 2 Zyxel ZON 工具軟體。 ZON可以找出使用動態IP的Switch，選擇欲設定的Switch並點選上方**Web GUI** 圖示，即可進入設備管理網頁。

- TR**
 - 1 Bilgisayarınızı bir Ethernet kablosu kullanarak Anahtara bağlayın. Bilgisayarınız, Anahtarla aynı alt ağdaki bir IP adresine sahip olmalıdır.
 - 2 Web tarayıcınızı başlatıp <http://192.168.1.3> adresine gidin. Şifre olarak 1234 girin. **SIGN IN (OTURUM AÇ)** düğmesine tıklayın.
- TH**
 - 1 เชื่อมต่อคอมพิวเตอร์กับสวิตช์โดยใช้สายเคเบิลอีเธอร์เน็ต คอมพิวเตอร์ของคุณต้องมีที่อยู่ IP ในเครือข่ายย่อยเช่นเดียวกับสวิตช์
 - 2 เปิดเว็บเบราว์เซอร์ของคุณและไปที่ <http://192.168.1.3> ป้อนรหัสผ่าน1234 คลิก **SIGN IN** (ลงชื่อเข้าใช้งาน)
- 繁中**
 - 1 用以太网路線將電腦連接至交換器。您電腦的 IP 位址必須與交換器位在同一個子網域。
 - 2 啟動您的網頁瀏覽器，並前往 <http://192.168.1.3>輸入密碼 1234 並登入。

Support Information

EU, Turkey and Russia
<https://support.zyxel.eu>

Taiwan
 + 886 2 2739 9889
retail@zyxel.com.tw

Thailand
 + 66 2831 5315
support@zyxel.co.th

EU Importer
 Zyxel Communications A/S
 Gladsaxevej 378, 2. th. 2860 Søborg, Denmark
<https://www.zyxel.com/dk/da/>

US Importer
 Zyxel Communications, Inc
 1130 North Miller Street Anaheim, CA 92806-2001
<https://www.zyxel.com/us/en/>

