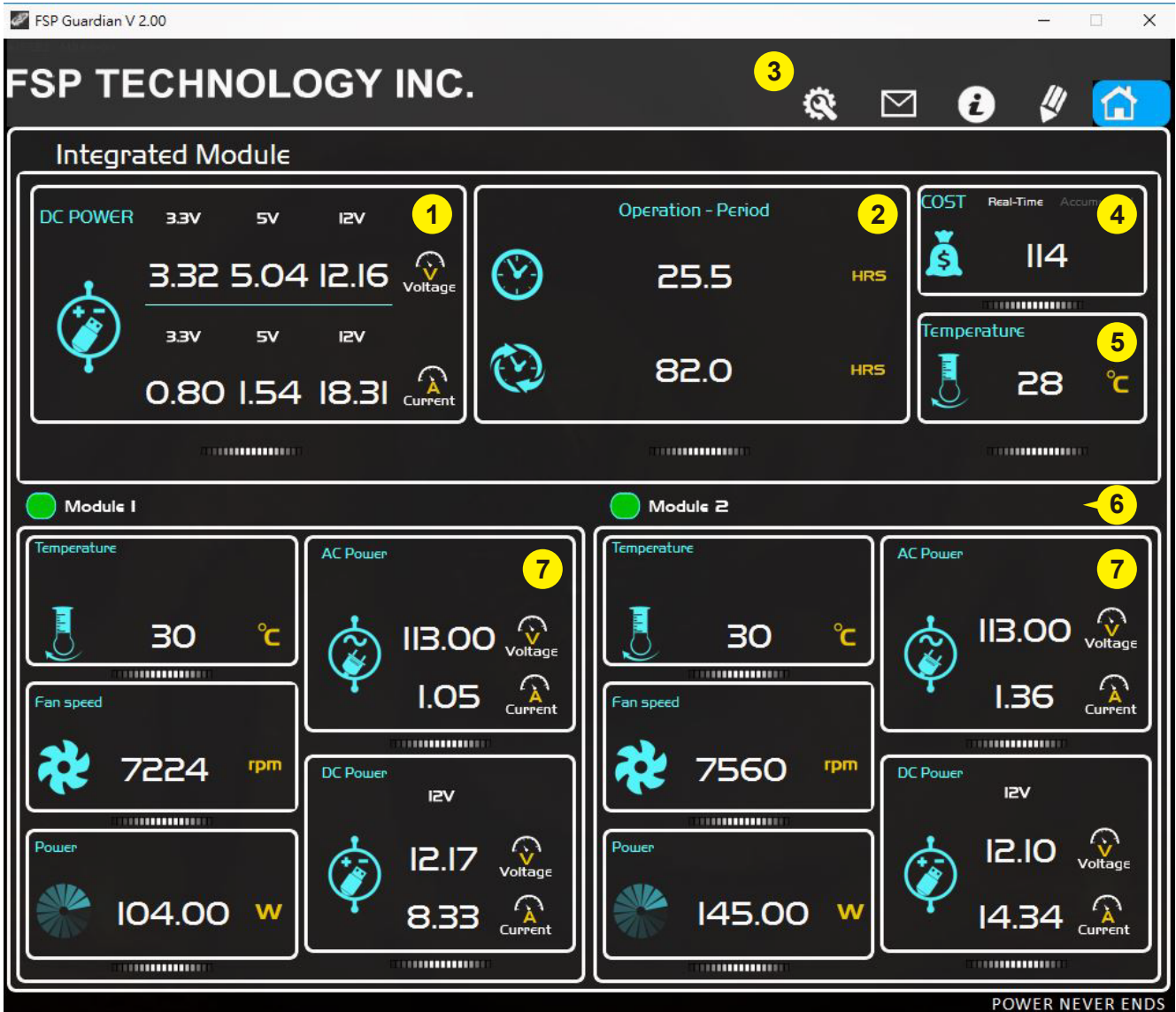




FSP Guardian

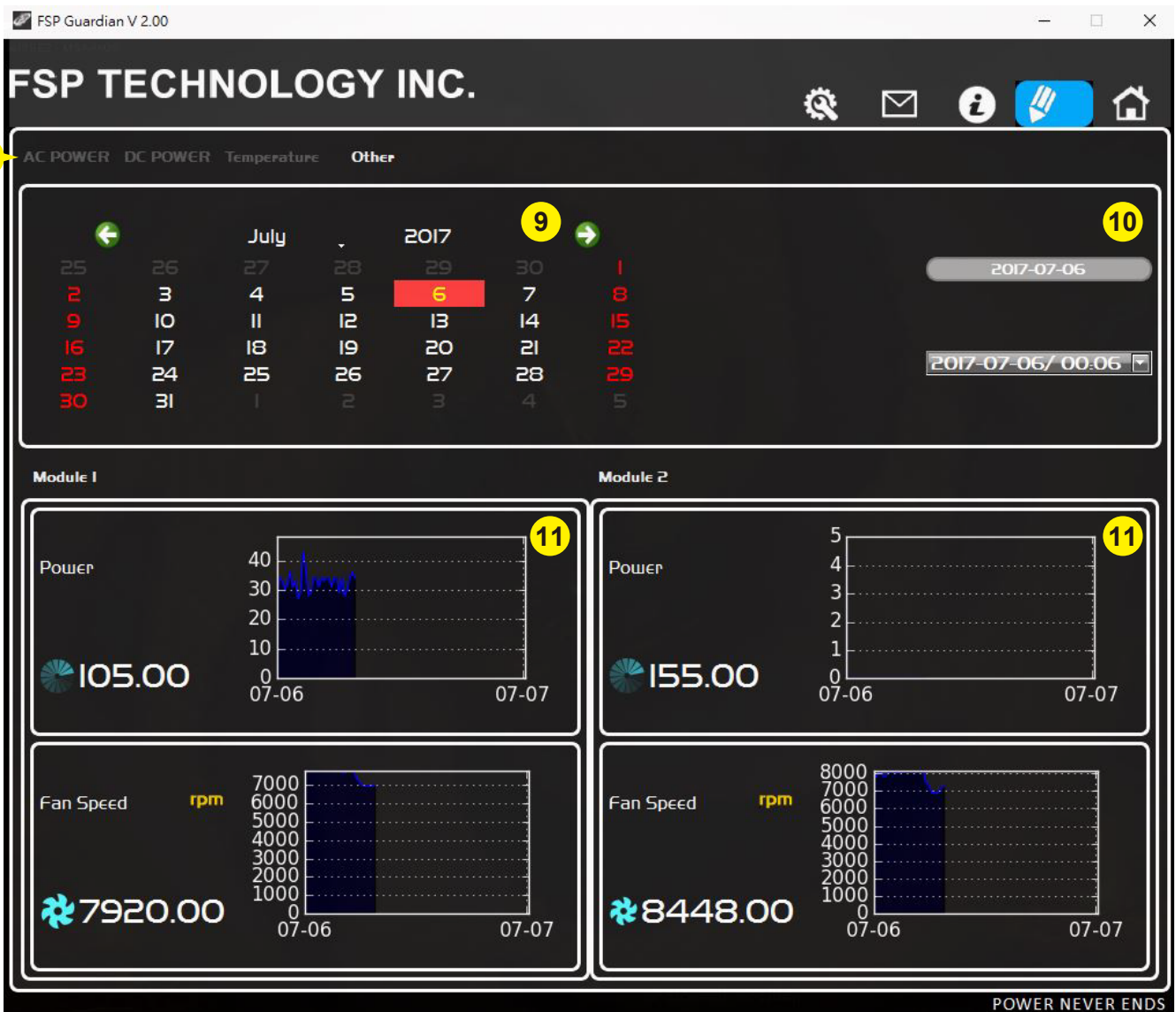
VERSION 2.0

FSP Guardian Software Page Function Introduction



- 1 3.3 V, 5 V, 12 V**
Total Power Output of 3.3V, 5V,12V
- 2 Operation Period**
Current operation time.
Accumulated operation time.
- 3 Label of Page**
Click the icons as you wish.
- 4 Total Electricity Cost**
Current Cost.
Accumulated Cost.

- 5 Power Temperature**
- 6 Modules' Status Indicators**
- 7 Single Module's Status**
Input Voltage / Current
Output Voltage / Current
Fan Speed
Output Wattage
Module Temperature



8 Label of Data Type

9 Date of Record

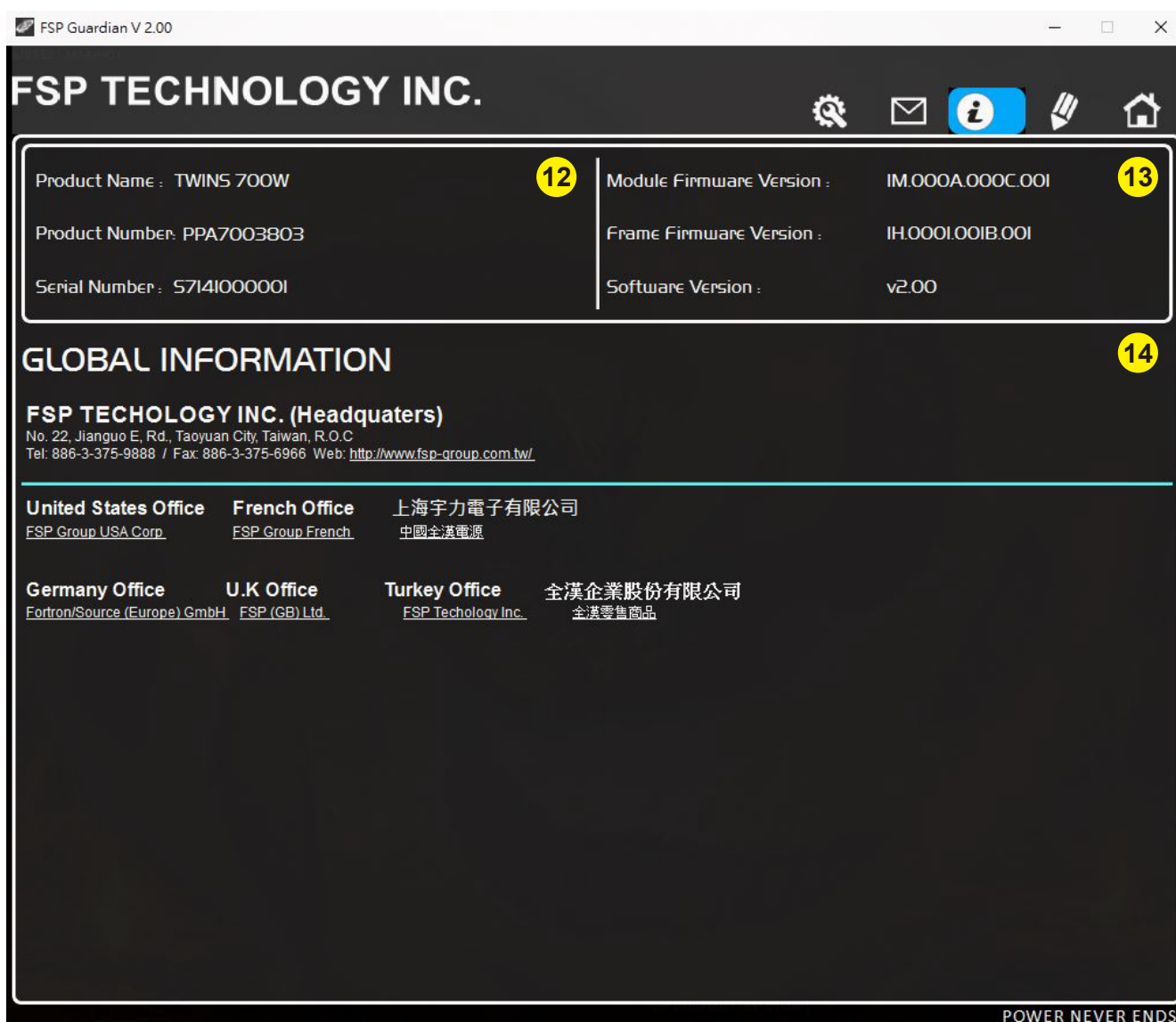
Choose the date you want to check.

10 Record Information

This area shows all data files of current date.

11 Figures and Graphs

This area shows the current data (figures and graphs) of each module.



FSP TECHNOLOGY INC.

Product Name : TWINS 700W	12	Module Firmware Version : IM.000A.000C.00I	13
Product Number: PPA7003803		Frame Firmware Version : IH.000I.00IB.00I	
Serial Number : 5714I00000I		Software Version : v2.00	

GLOBAL INFORMATION 14

FSP TECHNOLOGY INC. (Headquaters)
No. 22, Jianguo E. Rd., Taoyuan City, Taiwan, R.O.C
Tel: 886-3-375-9888 / Fax: 886-3-375-6966 Web: <http://www.fsp-group.com.tw/>

United States Office FSP_Group_USA_Corp	French Office FSP_Group_French	上海宇力電子有限公司 中國全漢電源	
Germany Office Fortron/Source (Europe) GmbH	U.K Office FSP (GB) Ltd.	Turkey Office FSP Technology Inc.	全漢企業股份有限公司 全漢零售商品

POWER NEVER ENDS

12 Product Information

13 Firmware Information

14 FSP Website Link



15 Mail Alarm Function

Setting up the following information of sender, including mail server, monitor's name, sender's name and pass word.

16 Conditions of Alarm

Please select conditions that need to be alarmed to users by mail.

17 Mail Receiver Setting

Click "ADD" to increase a new receiver. Double click to revise present name list.

18 Mail Sample

The mail content can be customized by user.

"<Your display Name>"

It will show the name of user.

"<< Cause >>"

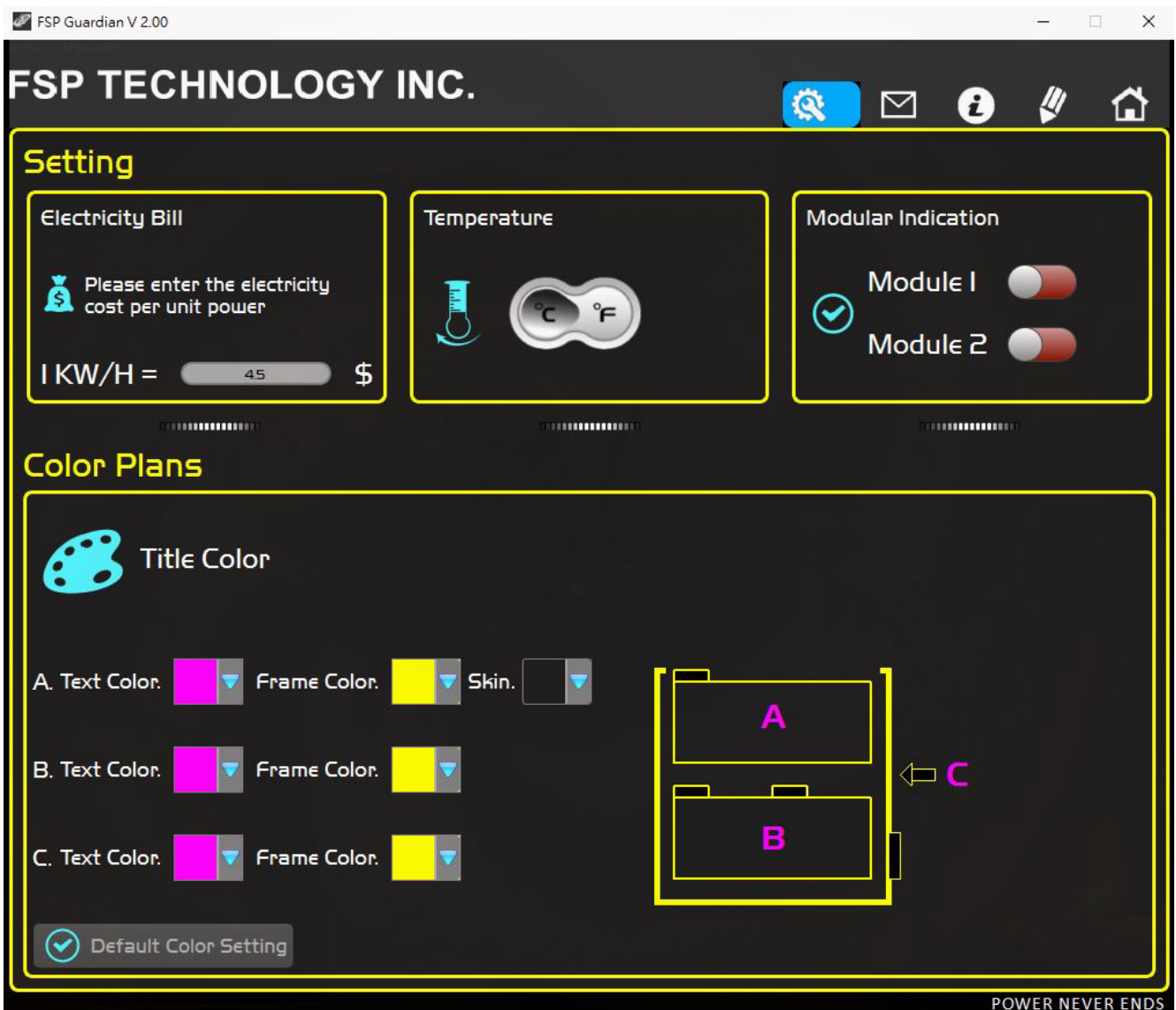
It will show the conditions happened.

19 Retransmission Cycle Interval Setting

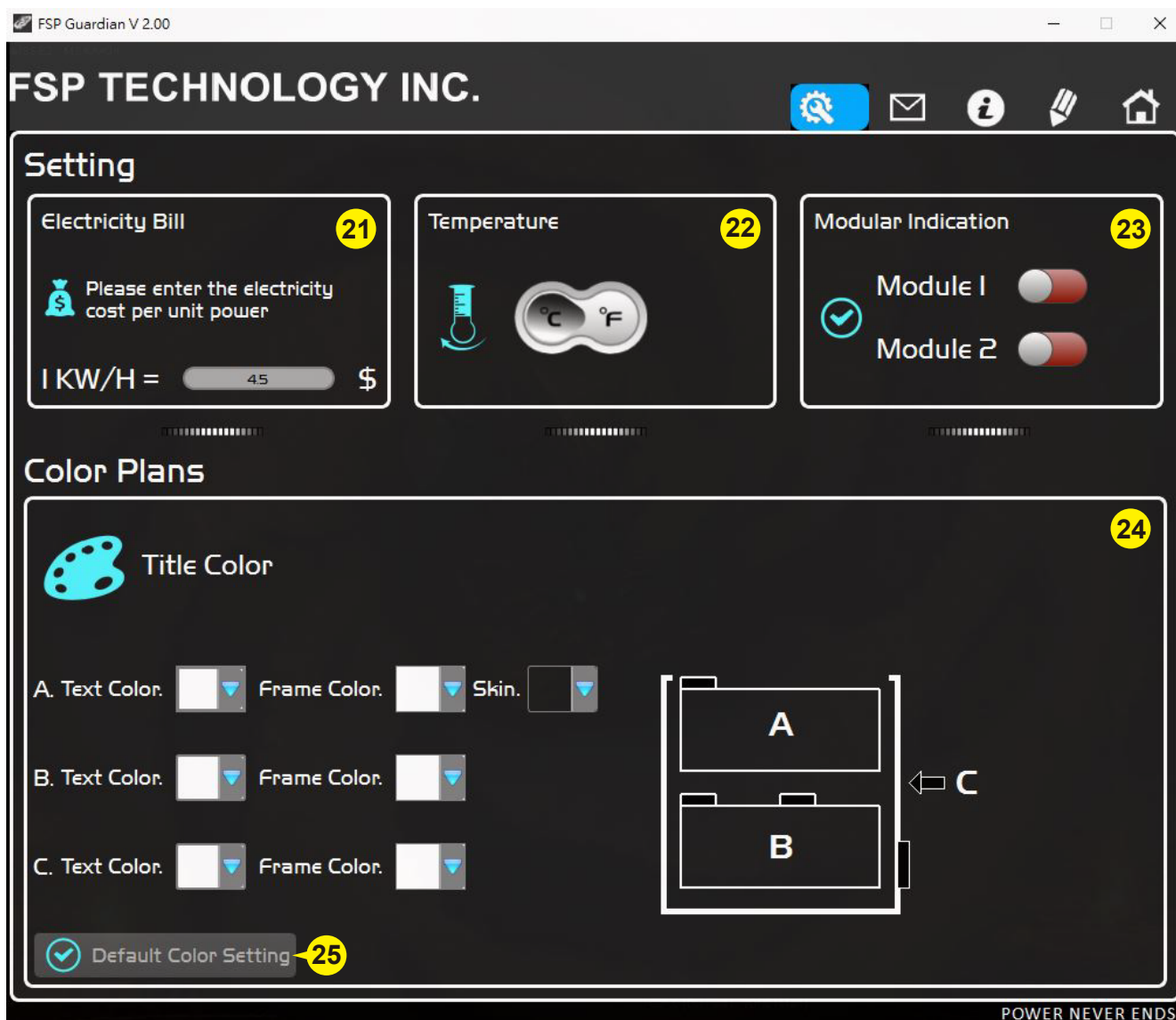
Fill in the seconds.

20 Save the Setting

Please click the button to save your setting.



Example of Frame Color Selection



21 Electricity Bill Setting

22 Temperature Unit Setting Button

Choose the unit you prefer and it will be shown on the Home page.

23 Online Modular Indicator Testing

Slide the button to green(right side), you will find the corresponding module's light blinking.

24 Color Plans

The frames' and background's colors can be adjusted by your choices. You also can preview the results by the illustration.

25 Reset the Software to the Default Color Setting