

Gigabit Ethernet PCI-Express adapter USER MANUAL



Disclaimer

• We spared no efforts to make sure that the information in this manual is correct and complete. However no liability is accepted for any errors or omissions. Gembird Electronics reserves the right to change the specifications of the hardware and software described in this manual without prior notice.

• No part of this manual may be reproduced, transmitted or translated in any language in any form, by any means, without the prior written permission of Gembird Electronics Ltd.


• Gembird Electronics makes no warranties for damages resulting from corrupted or lost data due to a mistaken operation or malfunction of the product, the software, personal computers or peripheral devices.

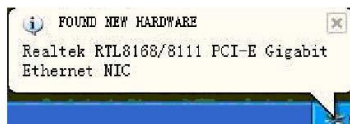
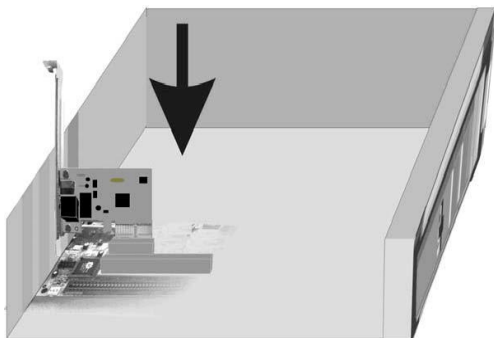
Gembird® is a registered trademark of Gembird Europe bv.

Other names or products not mentioned above may be registered trademarks or trademarks of their respective owners.

Copyright © 2008 Gembird Electronics Ltd. All rights reserved

1. Setup from CD:

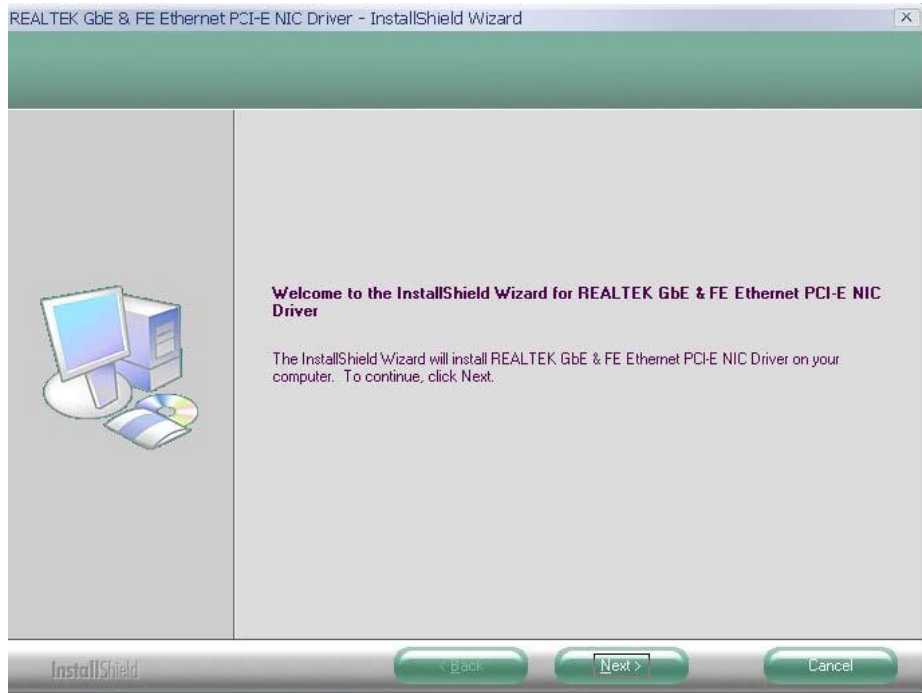
- 1.First, insert the adapter to PCI-E slot on the motherboard and fix it with screws. Start the computer and login to Windows, the system will notify about finding a new device, click  to close.



2.Put the CD into the drive, run “Setup.exe”.



3.Entering Install Shield wizard, click “next” and follow the instructions step by step .



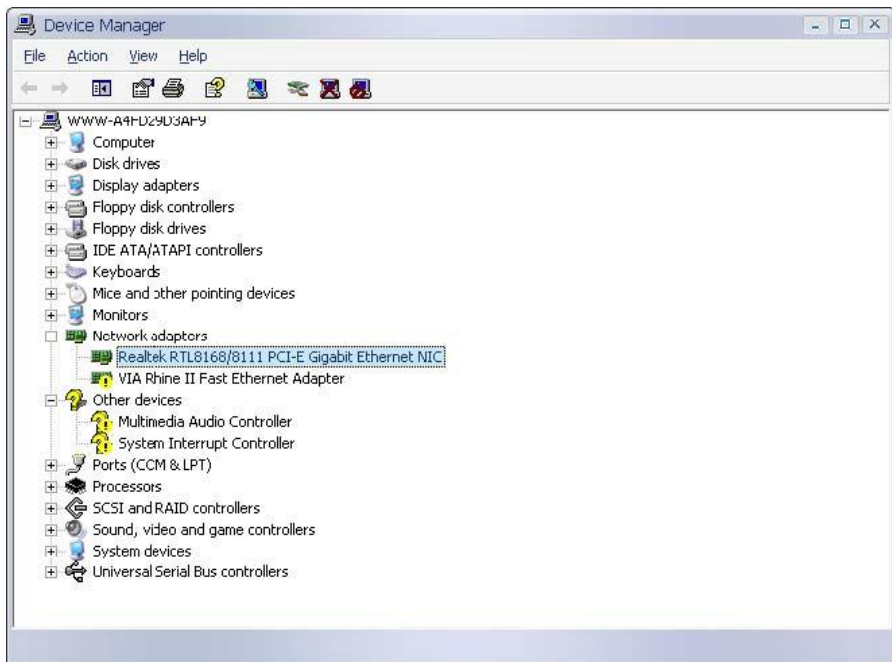
3. Installation completed, click “Finish”.


2. Setup from the Device manager

1.Login to Windows, finding a new device, “New device wizard” window will pop out, click “Cancel”



2. Refer to “Examine installation result” step 1~2.
3. “!” warning mark will appear for the adapter.



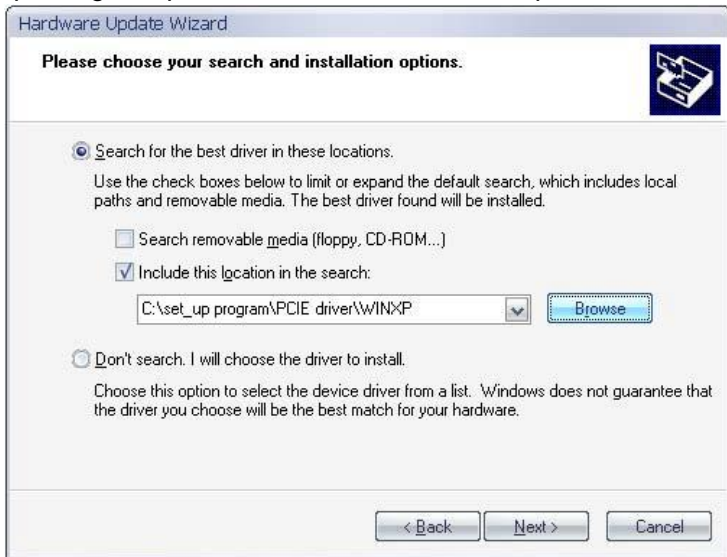
4. Right click  , choose “Property” .
5. In the pop out window for property, choose “Driver” → “Update driver”.
6. In the hardware updating wizard, choose “Install from a list or specific location (Advanced)”, click “Next”.

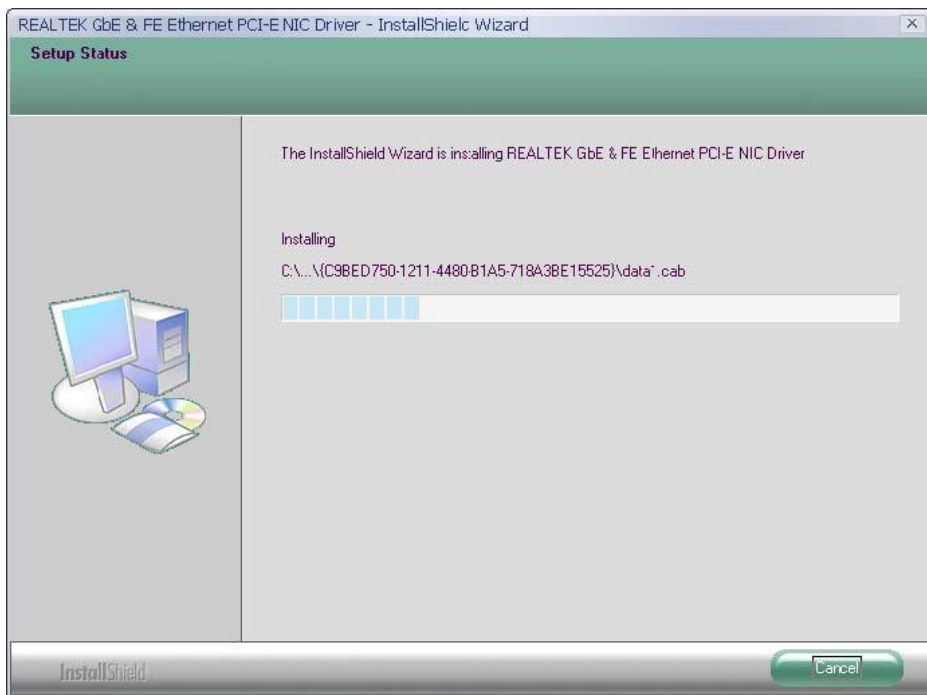


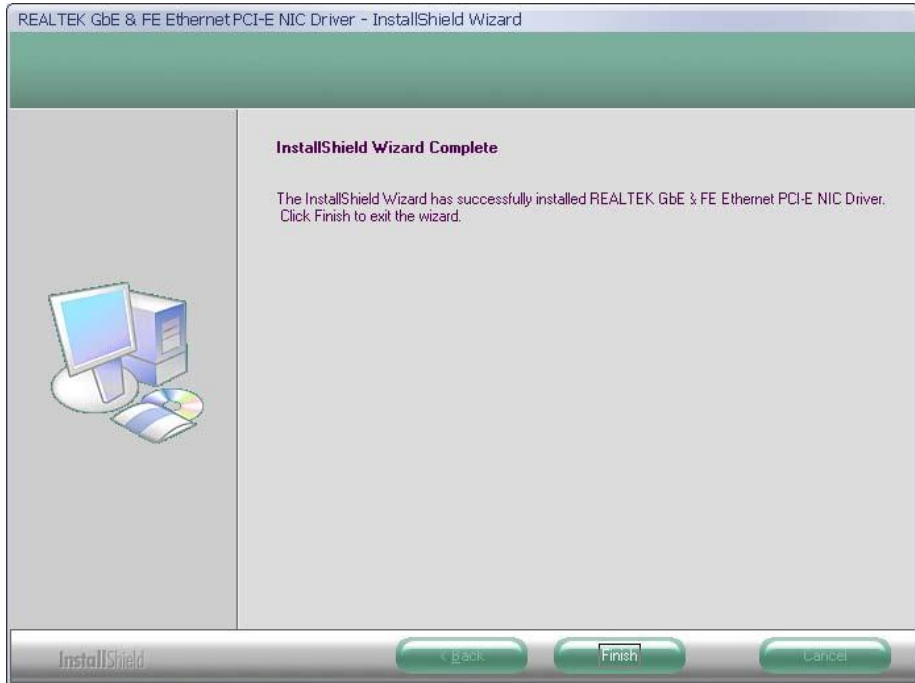


7. Click “Include this location in the search”, click to choose directory of the driver on the CD, click “Next”
8. Start copying driver data .

Driver updating complete, click “Finish”. The setup is done .







3. Automated setup .

1. In “Setup from device manager”, choose “Yes, only once” or “Yes, this time and every time when setup new device” option box, click “Next”.



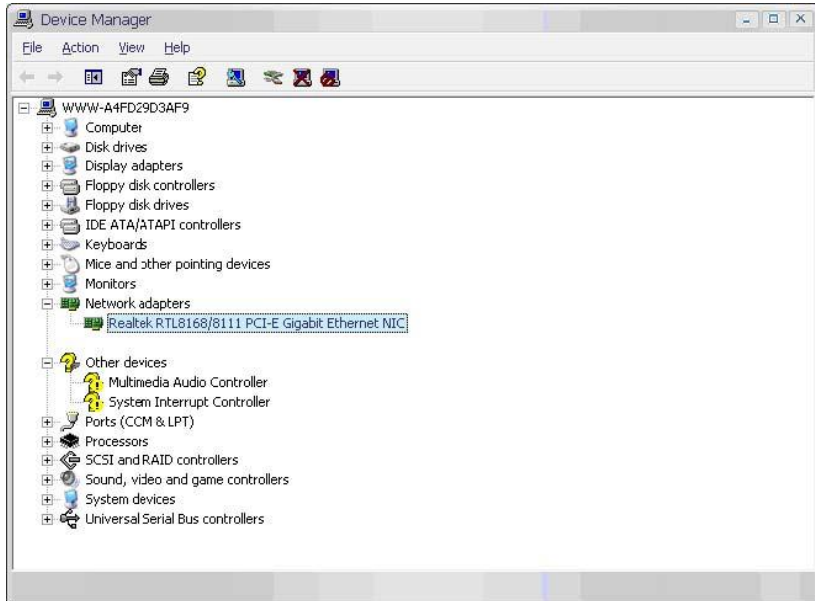
2.Refer to “Setup from the Device manager” step 6~8 .


4.Examine the setup result

1.Right click “My computer”, choose “Property” option in the pop out dialog.



2.Choose“Hardware” → “Device manager”.



3. Check if "Realtek RTL8168/8111 PCI-E Gigabit Ethernet NIC" has a  warning mark, if not - then the setup is successful.

5. Uninstall PCI-E driver.

1. Put driver CD into the drive and run “Setup.exe”.



3. Choose “Delete”, click “Next”.

4. Pop out “Delete the selected application and all functions?” dialog, choose “Yes”.



5. The system starts to delete driver, click “Finish”.