

[Skip to content](#)

Manuals+

User Manuals Simplified.



GRUNDIG CMS 4200 Micro HIFI-System User Manual

April 18, 2022 April 18, 2022 [Leave a comment on GRUNDIG CMS 4200 Micro HIFI-System User Manual](#)

[Home](#) » [GRUNDIG](#) » [GRUNDIG CMS 4200 Micro HIFI-System User Manual](#) 

Contents [hide](#)

[1 GRUNDIG CMS 4200 Micro HIFI-System](#)

[2 SAFETY AND SET-UP](#)

[3 Caution](#)

[4 AT A GLANCE](#)

[5 Remote Control](#)

[6 PREPARATIONS](#)

[7 CONNECTIONS](#)

[8 SETTINGS](#)

[9 MAIN OPERATION](#)

[10 DISC/USB OPERATION](#)

[11 BLUETOOTH OPERATION](#)

[12 TROUBLESHOOTING](#)

[13 SPECIFICATIONS](#)

[14 Documents / Resources](#)

[14.1 Related Manuals / Resources](#)

GRUNDIG

GRUNDIG CMS 4200 Micro HIFI-System



SAFETY AND SET-UP

The lightning flash with the arrowhead symbol, within an equilateral triangle, is intended to alert the user to the presence of uninsulated “dangerous voltage” within the product’s enclosure that may be of sufficient magnitude as to constitute a risk of electric shock to person. The exclamation point within an equilateral triangle is intended to alert the user to the presence of important operating and maintenance (servicing) instructions in the literature accompanying the appliance. This equipment is a Class II or double insulated electrical appliance. It has been designed in such a way that it does not require a safety connection to the electrical earth. AC voltage: This symbol indicates that the rated voltage marked with the symbol is AC voltage. Safety

- Read these instructions All the safety and operating instructions should be read before this product is operated.
- Keep these instructions The safety and operating instructions should be retained for future reference.
- Heed all warnings – All warnings on the appliance and in the operating instructions should be adhered to.
- Follow all instructions – All operating and usage instructions should be followed.
- This device may be used by children at least 8 years of age and by persons with reduced or inexperienced physical, sensory or mental abilities, if they (if) are properly monitored or if instructions for the safe operation of the device have been given to them and the risks involved have been apprehended. Children should not play with the device. Cleaning and maintenance by the user of must not be performed by unattended children.
- Do not use this apparatus near water
- The appliance should not be used near water or moisture – for example, in a wet basement or near a swimming pool and the like.
- Clean only with a dry cloth.
- Do not block any ventilation openings.
- Do not install near any heat sources such as radiators, heaters, stoves, or other apparatus (including amplifiers) that produce heat.
- Do not defeat the safety purpose of the polarized or grounding plug. A polarized plug has two blades with one wider than the other. A grounding plug has two blades and a third grounding prong.
- The wide blade or the third prong is provided for your safety. If the provided plug does not fit into your outlet, consult an electrician for replacement of the obsolete outlet.
- Protect the power cord from being walked on or pinched particularly at plugs, convenience receptacles, and the point where they exit from the apparatus.
- Only use attachments/accessories specified by the manufacturer.
- Use only with the cart, stand, tripod, bracket or table specified by the manufacturer, or sold with the apparatus. When a cart or rack is used, use caution when moving the cart/apparatus combination to avoid injury from tip-over.
- Unplug the apparatus during lightning storms or when unused for long periods of time.
- Refer all servicing to qualified personnel. Servicing is required when the apparatus has been damaged in any way, such as power supply cord or plug is damaged, liquid has been spilled or objects have fallen into the apparatus, the unit has been exposed to rain or moisture, does not operate normally, or has been dropped.
- The apparatus shall not be exposed to dripping or splashing. No objects filled with liquids, such as vases, shall be placed on the apparatus.
- The minimum distance around the apparatus for sufficient ventilation is 5 cm.
- The ventilation should not be impeded by covering the ventilation openings with items, such as newspapers, table-cloths, curtains, etc...
- No naked flame sources, such as lighted candles, should be placed on the apparatus.

- Batteries should be recycled or disposed of as per state and local guidelines.
- The use of apparatus in moderate climates.

Caution

- Use of controls or adjustments or performance of procedures other than those described herein, may result in hazardous radiation exposure or other unsafe operation.
- To reduce the risk of fire or electric shock, do not expose this apparatus to rain or moisture. The apparatus must not be exposed to dripping or splashing and objects filled with liquids, such as vases, must not be placed on apparatus.
- The mains plug/appliance coupler is used as the disconnect device, the disconnect device must remain readily operable.
- Danger of explosion if battery is incorrectly replaced. Replace only with the same or equivalent type.

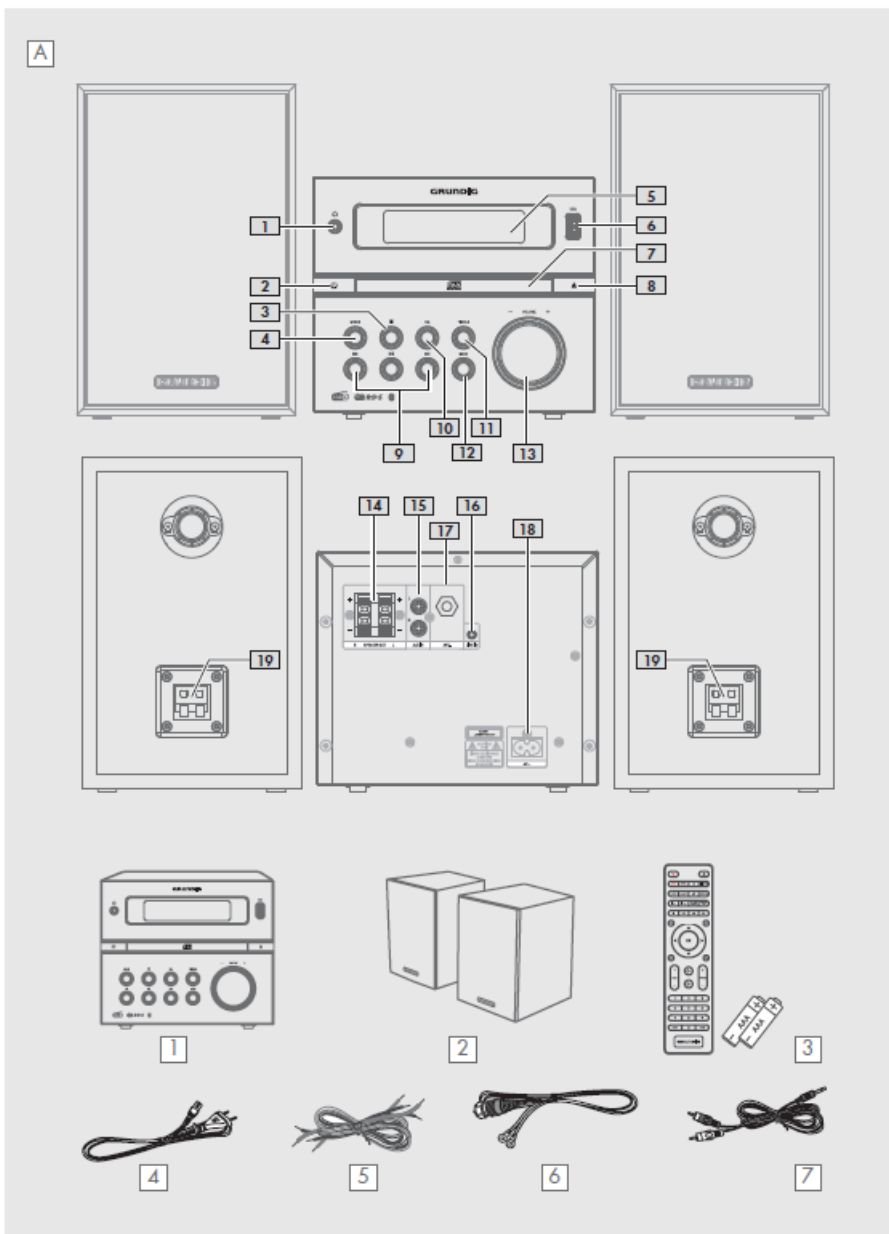
Warning

- The battery (batteries or battery pack) shall not be exposed to excessive heat such as sunshine, fire or the like.
- Before operating this system, check the voltage of this system to see if it is identical to the voltage of your local power supply.
- Do not place this unit close to strong magnetic fields.
- Do not place this unit on the amplifier or receiver.
- Do not place this unit close to damp areas as the moisture will affect the life of the laser head.
- If any solid object or liquid falls into the system, unplug the system and have it checked by qualified personnel before operating it any further.
- Do not attempt to clean the unit with chemical solvents as this may damage the finish. Use a clean, dry or slightly damp cloth.
- When removing the power plug from the wall outlet, always pull directly on the plug, never yank on the cord.
- Changes or modifications to this unit not expressly approved by the party responsible for compliance will void the user's authority to operate the equipment.
- The rating label is pasted on the bottom or back of the equipment.
- Install all batteries correctly, + and – as marked on the apparatus.
- Do not mix old and new batteries.
- Do not mix alkaline, standard (Carbon-Zinc) or rechargeable (Ni-Cd, Ni- MH, etc.) batteries.
- Remove batteries when the unit is not used for a long time.
- Excessive sound pressure from the earphones or headphones can cause hearing loss.

Note:

- Do not connect any other equipment while the device is switched on. Switch off the other devices as well before connecting them.
- Only plug the device into the mains socket after you have connected the external devices. Make sure the power plug is freely accessible.

This apparatus includes this label: Class 1 Laser Product



- Use of controls adjustments or performance of procedures other than those specified herein may result in hazardous radiation exposure.
- Do not look directly at the laser beam produced by the device as this can cause damage to the eyes.
- Do not attempt to open the device casing. Never insert objects into the device openings as this may cause the laser beam to be activated whilst the Disc drawer is open.

Notice for CDR/CDRW MP3 users:

- Depending on the type of CD burner, on the disc brand, the burning speed and the MP3 compression level, some reading problems may occur.
- **WARNING** To avoid danger of suffocation, keep this bag away from babies and children. Do not use in cribs, beds, carriages or playpens. This bag is not a toy. Discard bag and any other packing materials

When moving this unit

When changing places of installation or packing the unit for moving, be sure to remove the disc and return the disc tray to its closed position in the player. Then, press the power switch to turn the power off before disconnecting the power cord. Moving this unit with the disc loaded may result in damage to this unit.

Handling

Do not touch the playback side of discs. Hold discs by the edges to avoid leaving fingerprints on the surface. Any dust, fingerprints or scratches may cause a malfunction. Never attach a label or sticky tape to the disc.

Storage

Put disc back in their case after playing them. Never expose disc to direct sunlight or heat sources. Never leave discs

inside a car parked in full sunlight.

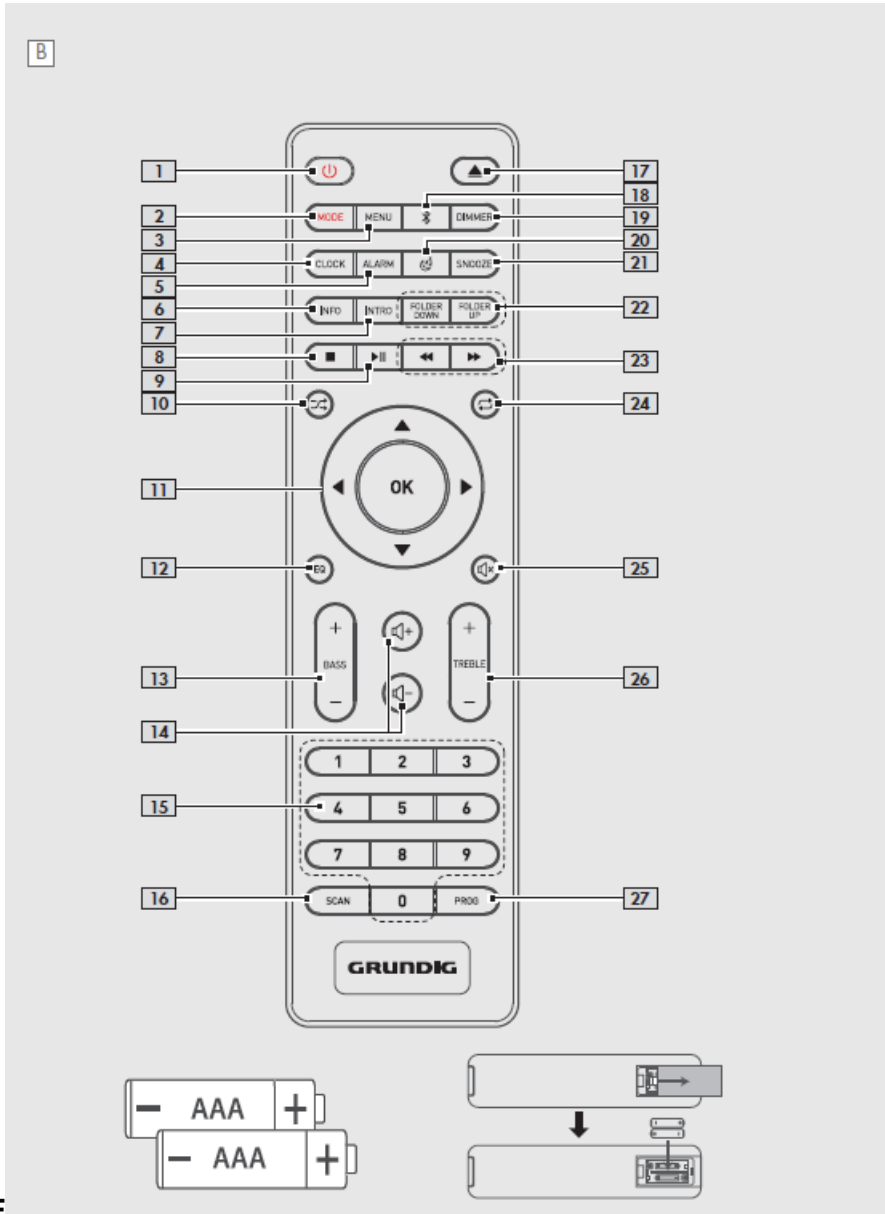
Cleaning

Use a clean soft lint-free cloth to clean the discs, working from the centre outwards in a straight line. Do not use solvents such as petrol, thinners, commercially available cleaners or antistatic sprays for vinyl records.

Hearing safety

Listen at a moderate volume.

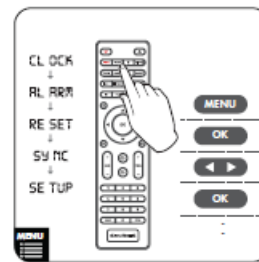
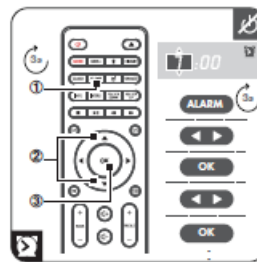
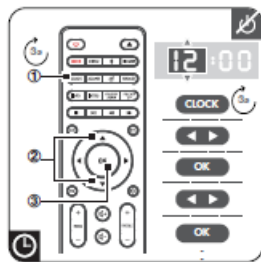
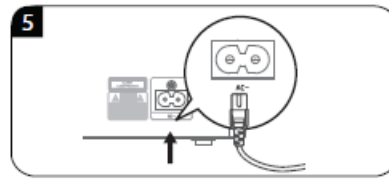
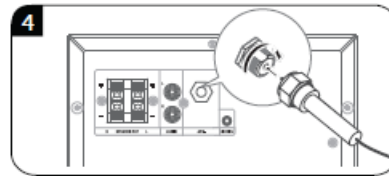
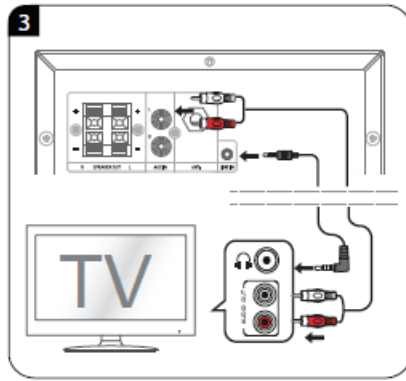
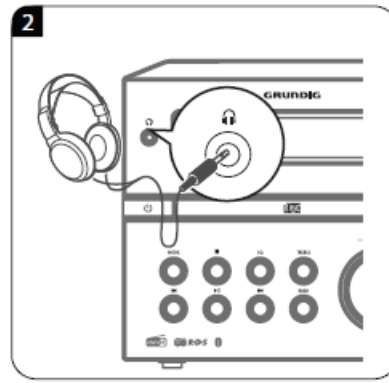
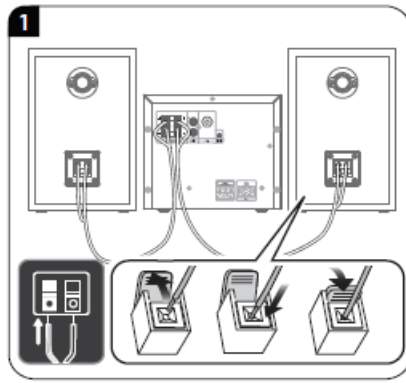
- Warning: Excessive sound pressure from earphones and headphones can cause hearing loss.
- To prevent possible hearing damage, do not listen at high volume levels for long periods.



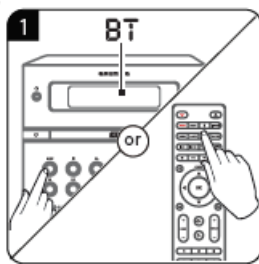
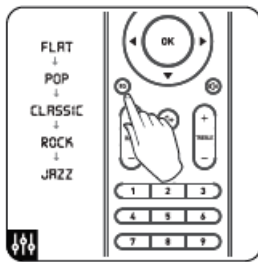
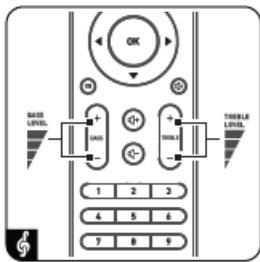
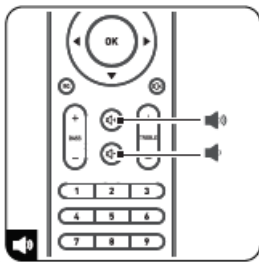
AT A GLANCE

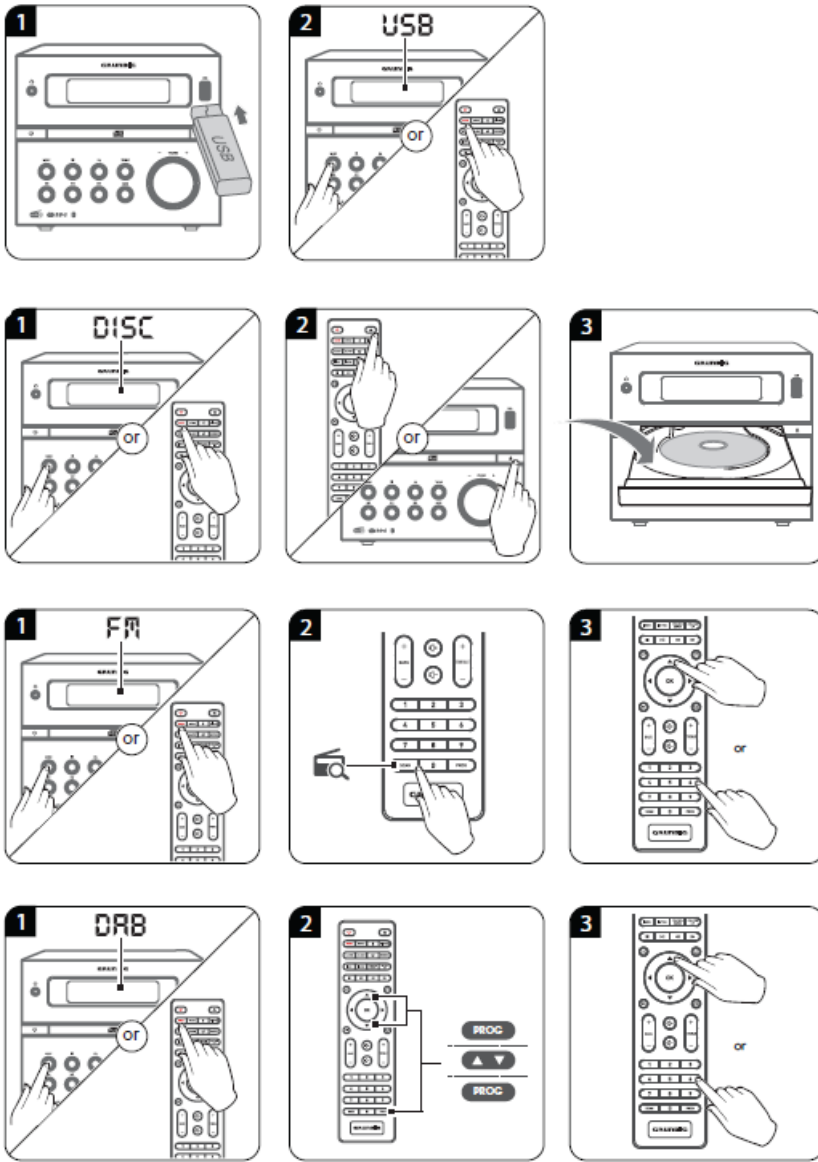
Dear Customer, Congratulations on the purchase of your new GRUNDIG Micro HIFI System CMS 4200. Please read the following user notes carefully to ensure full enjoyment of your quality GRUNDIG product for many years to come. A responsible approach!GRUNDIG focuses on contractually agreed social working conditions with fair wages for both internal employees and suppliers. We also attach great importance to the efficient use of raw materials with continuous waste reduction of several tonnes of plastic every year. Furthermore, all our accessories are available for at least 5 years.For a future worth living.Grundig.

Controls and parts



See the figure on page 3.





1. (Headphone) Socket
Connect to Headphone.
2. (ON/OFF) Button
Switch the unit between ON and STANDBY mode.
3. (Stop play) Button
In Disc/USB mode, stop play.
4. MODE (Source) Button
Select the play function.
5. Display Window
6. USB Socket
Insert the USB device to play music.
7. Disc Compartment
8. Button
Open and close the disc compartment.
9. / Buttons In Disc/USB/BT mode, press to skip to previous/next track. In FM mode, short press for 0.05MHz frequency change, long press will scan to previous/next available station. In DAB mode, short press select a previous/next available station. Button Play/pause/resume playback. In standby mode, press the button repeatedly to activate or deactivate the alarm timer.
10. EQ Button
Select Equalizer (EQ) Effect: POP – CLASSIC -ROCK – JAZZ – FLAT.
11. BASS Button
Press “BASS” then rotate VOL+/- knob to adjust the bass level.
12. TREBLE Button Press “TREBLE” then rotate VOL+/- knob to adjust the treble level.
13. VOL+/- knob Increase/decrease the volume level.
14. Speakers (R/L) Sockets

15. AUX IN (R/L) Socket
16. LINE IN Socket
17. ANT. Socket
18. AC~ Socket
19. Speakers (R/L) Sockets

What's in the Box

1. Main Unit
2. Speakers (Left / Right)
3. Remote Control AAA Batteries
4. AC Power Cord
5. Speaker Cable
6. FM/DAB Aerial
7. RCA to 3.5mm Audio Cable

Remote Control

Switch the unit between ON and STANDBY mode. Select the play function. Entering menu setup. In standby mode, press and hold to activate clock setup. Display current clock. In standby mode, press and hold to set the alarm timer. View extra information of playing content or mode. In Disc/USB mode, every soundtrack will be played for 10 Sec. In Disc/USB mode, stop play.

In Disc/USB/BT mode, start, pause or resume play. In FM mode, short press for 0.05MHz frequency change, long press will scan to previous/next available station. Select Equalizer (EQ) Effect: POP CLASSIC – ROCK – JAZZ – FLAT. (OK) Confirm a selection. Increase/decrease the volume level. Numric Button: Select preset radio station or stored programme Scan for radio station. 17. Open and close the disc compartment. Select the BT (Bluetooth) function. DIMMER Adjust display brightness Play all tracks in next/last folder Perform fast forward/ reverse playback Select repeat play modes. Mute or resume the sound. Adjust the treble level. Program soundtracks in Disc/USB mode. Presets radio stations.

PREPARATIONS

Prepare the Remote Control

The provided Remote Control allows the unit to be operated from a distance.\

- Even if the Remote Control is operated within the effective range 19.7 feet (6m), remote control operation may be impossible if there are any obstacles between the unit and the remote control.
- If the Remote Control is operated near other products which generate infrared rays, or if other remote control devices using infra-red rays are used near the unit, it may operate incorrectly. Conversely, the other products may operate incorrectly.
- Be sure to insert the batteries with correct positive “ ” and negative “ ” polarities.
- Use batteries of the same type. Never use different types of batteries together.
- Either rechargeable or non-rechargeable batteries can be used. Refer to the precautions on their labels.
- Be aware of your fingernails when removing the battery cover and the battery.
- Do not drop the remote control.
- Do not allow anything to impact the remote control.
- Do not spill water or any liquid on the remote control.
- Do not place the remote control on a wet object not place the remote control under direct sunlight or near sources of excessive heat
- Remove the battery from the remote control when not in use for a long period of time, as corrosion or battery leakage may occur and result in physical injury, and/or property damage, and/or fire.
- Do not use any batteries other than those specified.
- Do not mix new batteries with old ones.
- Never recharge a battery unless it is confirmed to be a rechargeable type.

CONNECTIONS

- For optimal sound, use the supplied speakers only. Connect only speakers with impedance that is the same or higher than the supplied speakers. Refer to the Specifications section of this manual.

- Plug a headphone into the (Headphone) socket. When you connect headphones to hear the sound from the speakers.
- please note that the Hearing Safety.
- Use a RCA to 3.5mm audio cable (included) to connect the TV's audio output sockets to the AUX IN or LINE IN socket on the unit.
- Use a RCA to RCA audio cable (not included) to connect the TV's audio output sockets to the AUX IN (R/L) socket on the unit.
- Use a 3.5mm to 3.5mm audio cable (not included) to connect the TV's or external audio device headphone socket to the LINE IN socket on the unit.
- Ensure that the power supply voltage corresponds to the voltage printed on the back or the underside of the unit.
- Before connecting the AC power cord, ensure you have completed all other connections.
- Connect the mains cable to the AC~ socket of the main unit and then into a mains socket.

SETTINGS

Set the Clock

1. In Standby mode, press and hold CLOCK
2. Press the / buttons on the remote control
 - OFF: No Synchronization
 - ANY: Synchronization from Any
 - FM: Synchronization from FM
 - DAB: Synchronization from DAB
3. After setting the alarm timer, press the ALARM button on the remote control to view the alarm settings.
4. The alarm is active when is shown on the display.
5. To deactivate the alarm, press the ALARM button twice. The will disappear on the display. Press the ALARM button twice again to activate the alarm timer.
6. When the alarm rings, press the SNOOZE button on remote control. The alarm repeats ringing 9 minutes later.
7. When the alarm rings, press button to turn off the alarm.

Tips:

- Each enabled state will be cleared if a button is not pressed within 15 seconds.
- When the alarm rings, press the button on the remote control or on the unit. The alarm stops but the alarm settings remain.

MAIN OPERATION

Standby/ON

When you first connect the main unit to the mains socket, the main unit will be in Standby mode.

- Press the button on the remote control or on the main unit to switch the main unit ON.
- Disconnect the mains plug from the mains socket if you want to switch the unit off completely.

Tips:

If there is no signal input under the DISC, USB, BT (Bluetooth), LINE IN or AUX mode, the unit will automatically switch off within 15 minutes.

Select Modes

- Press the MODE button on the unit or on the remote control to select the desired mode.
- The selected mode DISC, USB, DAB, FM, BT, AUX, LINE IN will show on the display.

Set the Sleep Timer

This unit can switch to standby automatically after a set period of time.

1. Press the button on the remote control repeatedly to select your desired number of minutes. The number of minutes shown will display in this sequence:
2. Stop pressing the button when your desired number of minutes is displayed. The sleep timer is now set.

- Press the button to view the remaining time before switch off.
- To cancel the sleep timer, press the button repeatedly until “SLEEP OFF” shows on the display.

DISC/USB OPERATION

1. While in ON mode, press the MODE button on the unit or on the remote control to select DISC mode.
2. Press the button on the unit or on the remote control and the disc tray will open automatically.
3. Place the disc with the label side up into the disc compartment, and then press the button on the unit or on the remote control to close the disc tray.
4. Play starts automatically. If play does not start automatically, select a title/chapter/track and then press button.

USB Operation

1. Insert the USB device.
2. Press the MODE button on the unit or on the remote control to select USB mode.
3. Play starts automatically. If play does not start automatically, select a title/chapter/track and then press button.

Play Control

	Stop play.
	Start, pause or resume play.
/	Previous track / Next track.
/	Perform fast forward/ reverse playback
	Select shuffle play modes.
	Repeat one: Repeat all:
	Repeat folder: flashing
INFO	View extra information of playing content or mode.
INTRO	Every soundtrack will be played for 10 Sec.
Folder	Play all tracks in
Down/Up	next/last folder

Program Setting

The user can programme up to 20 tracks in CD/ USB mode in any desired order. Programme mode is activated while in STOP mode.

1. Press the button on the remote control. Press the PROG button to enter MEMORY mode.
2. buttons on the remote control to select the track that you want to preset, then press PROG button to confirm.
3. Repeat step 2 to programme more tracks.
4. Press the button to playback programme tracks.

BLUETOOTH OPERATION

- The operational range between this player and a Bluetooth device is approximately 8 meters (without any object between the Bluetooth device and the unit).
- Before you connect a Bluetooth device to this unit, ensure you know the device’s capabilities.
- Compatibility with all Bluetooth devices is not guaranteed.
- Any obstacle between this unit and a Bluetooth device can reduce the operational range.
- If the signal strength is weak, your Bluetooth receiver may disconnect, but it will re-enter pairing mode

automatically.

- Switch to another function on the unit.
- Disable the function from your Bluetooth device.
- Press and hold the button on the unit or the button on the remote control. The Bluetooth device will be disconnected from the unit.

TROUBLESHOOTING

To keep the warranty valid, never try to repair the system yourself. If you encounter problems when using this unit, check the following points before requesting service

Fault	Possible cause/action
GENERAL INFORMATION	
No function	-If the device has been disrupted by a thunderstorm, a static charge or another external factor, follow this procedure to resolve the problem: Disconnect the mains and then plug it in again. -The volume may be set too low or in mute mode.
No sound	-In Bluetooth mode: Set the volume of the external device to the maximum and then control the volume using the kitchen radio. -Weak radio signal. Adjust the wire antenna to optimize the radio reception.
RADIO	
Poor radio reception	-Interference from electrical devices such as television, neon lamps, computer etc. -If necessary, select another location to improve the radio signal. -The station may not be available currently, try it again later or select another station.
No station is found.	-The link of the station is changed or the station no longer transmits – ask the provider for information (when necessary).
BLUETOOTH	
No connection	-Take care to ensure that all settings have been made correctly on all devices. The Bluetooth® function may be deactivated on the external device. Activate this, if necessary. -Check whether the device to be connected is switched on and is in search mode.

Disc -There is no disc inside the unit (“NO DISC” appears on the display).

The disc does not play. -Insert the disc correctly with the label side facing up.

-Clean the disc.

-PAUSE mode may be activated, deactivate it.

-A non-valid disc has been inserted.

-Condensation may have formed inside the unit due to a sudden change in temperature. Wait about an hour for it to clear and try again.

Disc skips -Make sure the unit is on a secure spot. Vibrations or jarring can cause the disc to skip.

USB -Insert the USB device the other way round.

Cannot play some files from USB device -Some USB devices may not be compatible with the unit.

SPECIFICATIONS

System Section

Power Supply	220-240V~ 50/60Hz
Power Consumption	25 W
Standby Mode Power Consumption	< 1.0 W
Amplifier	120W(Max. output power); 60W(RMS output power)
Speaker Impedance	8Ω x 2
Bluetooth Frequency Band	V 4.2 (Supports A2DP, AVRCP profiles) 2402 MHz ~ 2480 MHz
Radio Frequency Power Transmitted	<5 dBm
	5.0 V 500 mA
	File system: FAT 32, FAT16 System compatibility: 64G (max)
	Albums and files: max. 980 folder 8500 file
	Supported Formats:
Extension Codec	Sample Rate Bitrate
MPEG 1 Layer 1	8KHz~48KHz 32kbps~448kbps
MPEG 1 Layer 2	8KHz~48KHz 32kbps~384kbps

		MPEG 1 Layer 3	8KHz~48KHz 32kbps~320kbps
		MPEG 2/MPEG	
		2.5 Layer 1	8KHz~48KHz 32kbps~256kbps
USB	.mp3	MPEG 2/MPEG	
		2.5 Layer 2	8KHz~48KHz 8kbps~160kbps
		MPEG 2/MPEG	
		2.5 Layer 3	8KHz~48KHz 8kbps~160kbps
	.wma	WMA	8KHz~48KHz 5kbps~320kbps
	.wav	WAV	8KHz~48KHz Up to 3072 kbps
	.flac	FLAC	Up to 48KHz/16 bit

Frequency response: 100 Hz ... 18 kHz Signal to Noise ratio: 65 dBA

Albums and files: max. 980 folder 8500 file

DISC Playable Disc type: CD, CD-R, CD-RW, MP3-CD, WMA-CD CD Playable formats: MP3, WMA, CD-audio

FM 87.5 – 108.0 MHz
DAB 174.928 – 239.200 MHz
Unit Dimension (WxHxD) 180 x 154 x 250 mm
Speaker Dimension 140 x 213 x 225 mm

Unit Net Weight 1.5 kg
Speaker (R/L) Net Weight 4.4 kg (2.2kg x 2)

Audio Input Sensitivity 400 mV
Frequency Response 40Hz – 20KHz
S/N Ratio ≥65dB
Channel Separation ≥50dB

Remote Control

Distance/Angle 6m / 30°
Battery type 2×LR03, 1.5V, AAA _

Compliance with the WEEE Directive and Disposing of the Waste Product:

This product complies with EU WEEE Directive (2012/19/EU). This product bears a classification symbol for waste electrical and electronic equipment (WEEE). This symbol indicates that this product shall not be disposed with other household wastes at the end of its service life. Used device must be returned to official collection point for recycling of electrical and electronic devices. To find these collection systems please contact to your local authorities or retailer

where the product was purchased. Each household performs important role in recovering and recycling of old appliance. Appropriate disposal of used appliance helps prevent potential negative consequences for the environment and human health.

Compliance with RoHS Directive

The product you have purchased complies with EU RoHS Directive (2011/65/EU). It does not contain harmful and prohibited materials specified in the Directive. Packaging information Packaging materials of the product are manufactured from recyclable materials in accordance with our National Environment Regulations. Do not dispose of the packaging materials together with the domestic or other wastes. Take them to the packaging material collection points designated by the local authorities.

Technical Information

This device is noise-suppressed according to the applicable EU directives. This product fulfils the European directives 2014/53/EU, 2009/125/EC and 2011/65/EU.

You can find the CE declaration of conformity for the device in the form of a pdf file on the Grundig Homepage www.grundig.com/downloads/doc.

Documents / Resources



[GRUNDIG CMS 4200 Micro HIFI-System \[pdf\] User Manual](#)
CMS 4200, Micro HIFI-System

Related Manuals / Resources



[Mirage Micro Nasal Mask User Manual](#)

Mirage Micro Nasal Mask User Manual - Optimized PDF
Mirage Micro Nasal Mask User Manual - Original PDF



[Philips BTB2515 Micro Music System User Manual](#)

Philips BTB2515 Micro Music System User Manual - Optimized PDF
Philips BTB2515 Micro Music System User Manual - ...



[Bozis Autoshred Micro Cut Shredder User Manual](#)

Bozis Autoshred Micro Cut Shredder User Manual - Optimized PDF
Bozis Autoshred Micro Cut Shredder User Manual - ...

[Trust Oni Wireless Micro Mouse User Guide](#)

Trust Oni Wireless Micro Mouse 1 2 3 4 5 6 Frequently Asked Questions <http://www.trust.com/21048/faq> ©...

Leave a comment

Your email address will not be published.

Comment

Name

Email

Website

Save my name, email, and website in this browser for the next time I comment.

[Manuals+](#),

- [home](#)
- [privacy](#)