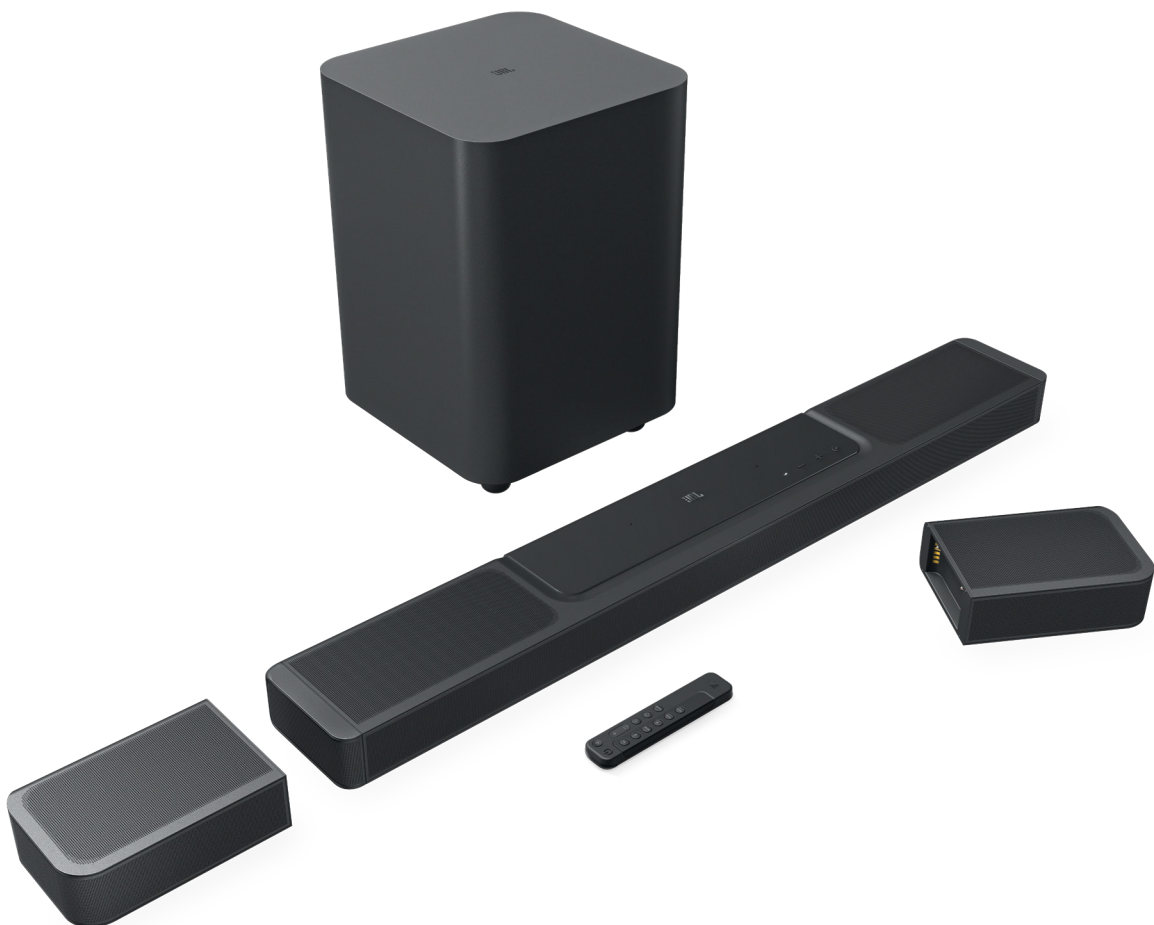




BAR 1300



OWNER'S MANUAL

IMPORTANT SAFETY INSTRUCTIONS

Verify Line Voltage Before Use

The JBL Bar 1300 (soundbar, detachable speakers and subwoofer) has been designed for use with 100-240V AC, 50/60Hz. Connection to a line voltage other than that for which your product is intended can create a safety and fire hazard and may damage the unit. If you have any questions about the voltage requirements for your specific model or about the line voltage in your area, contact your retailer or customer service representative before plugging the unit into a wall outlet.

Do Not Use Extension Cords

To avoid safety hazards, use only the power cord supplied with your unit. We do not recommend that extension cords be used with this product. As with all electrical devices, do not run power cords under rugs or carpets, or place heavy objects on them. Damaged power cords should be replaced immediately by an authorized service center with a cord that meets factory specifications.

Handle the AC Power Cord Gently

When disconnecting the power cord from an AC outlet, always pull the plug; never pull the cord. If you do not intend to use this speaker for any considerable length of time, disconnect the plug from the AC outlet.

Do Not Open the Cabinet

There are no user-serviceable components inside this product. Opening the cabinet may present a shock hazard, and any modification to the product will void your warranty. If water accidentally falls inside the unit, disconnect it from the AC power source immediately, and consult an authorized service center.

TABLE OF CONTENTS

IMPORTANT SAFETY INSTRUCTIONS 2

1. INTRODUCTION 4

2. WHAT'S IN THE BOX 5

3. PRODUCT OVERVIEW 6

- 3.1 SOUNDBAR 6
 - 3.2 DETACHABLE SPEAKERS 6
 - 3.3 SUBWOOFER 7
 - 3.4 REMOTE CONTROL 8
-

4. PLACE 9

- 4.1 DESKTOP PLACEMENT 9
 - 4.2 WALL-MOUNTING 9
-

5. CONNECT 10

- 5.1 CONNECTION WITH YOUR TV AND DIGITAL DEVICES 10
 - 5.2 BLUETOOTH CONNECTION 12
 - 5.3 CONNECTION WITH YOUR HOME NETWORK 13
-

6. SETUP 14

- 6.1 CONNECT THE DETACHABLE REAR SPEAKERS AND SUBWOOFER 14
 - 6.2 CHARGE THE DETACHABLE SPEAKERS 14
 - 6.3 3D SURROUND SOUND 15
 - 6.4 USE THE DETACHABLE SPEAKERS AS STANDALONE BLUETOOTH SPEAKERS 17
-

7. PLAY 19

- 7.1 POWER-ON/AUTO STANDBY/AUTO WAKEUP 19
- 7.2 PLAY FROM THE TV SOURCE 19
- 7.3 PLAY FROM THE HDMI IN SOURCE 20
- 7.4 PLAY FROM THE BLUETOOTH SOURCE 20
- 7.5 PLAY THROUGH THE JBL ONE APP 21
- 7.6 PLAY THROUGH CHROMECAST BUILT-IN 22

- 7.7 PLAY THROUGH AIRPLAY 22
 - 7.8 PLAY THROUGH ALEXA CAST 22
 - 7.9 MULTI-ROOM PLAYBACK 23
-

8. SOUND SETTINGS 24

- 8.1 AUDIO SYNC 24
 - 8.2 SMART MODE 24
 - 8.3 PUREVOICE DIALOGUE ENHANCEMENT TECHNOLOGY 24
-

9. RESTORE FACTORY SETTINGS 24

10. SOFTWARE UPDATE 25

11. RE-CONNECT THE SUBWOOFER 26

12. PRODUCT SPECIFICATIONS 26

13. TROUBLESHOOTING 27

14. TRADEMARKS 29

15. OPEN SOURCE LICENSE NOTICE 30

1. INTRODUCTION

Thank you for purchasing the JBL Bar 1300 (soundbar, detachable speakers and subwoofer) which is designed to bring an extraordinary sound experience to your home entertainment system. We encourage you to take a few minutes to read through this manual, which describes the product and includes step-by-step instructions for setting up and getting started.

To make the most of product features and support, you may need to update the product software through the Internet or the USB connector in the future. Refer to the software update section in this manual to ensure that your product has the latest software.

Designs and specifications are subject to change without notice. If you have any questions about the soundbar, installation or operation, please contact your retailer or customer service representative, or visit our website: www.jbl.com.

JBL One app

With the JBL One app, you can

- easily complete Wi-Fi setup on the soundbar, which allows the soundbar to access software updates when they are available;
- connect *music streaming services;
- discover new music with integrated music services;
- use one button to access your preset playlist and speaker settings.



For more information, see [“5.3 Connection with your home network”](#) and [“7.5 Play through the JBL One app”](#).

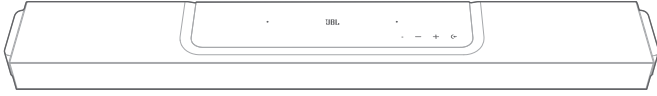
NOTES:

- *Subscription may be needed and not provided by the JBL One app.

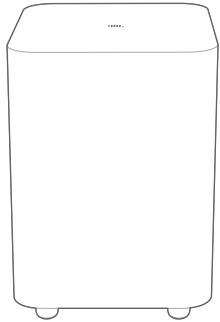
2. WHAT'S IN THE BOX

Unpack the box carefully and ensure that the following parts are included. If any part is damaged or missing, do not use it and contact your retailer or customer service representative.

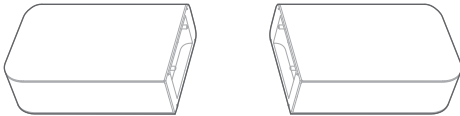
Soundbar



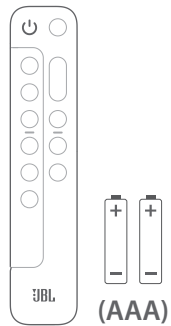
Subwoofer



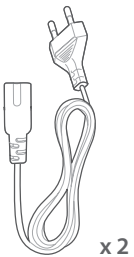
Detachable speakers (with a rechargeable battery)



Remote control (with 2 AAA batteries)



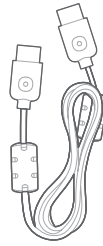
Power cord*



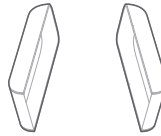
x 2

* Power cord quantity and plug type vary region.

HDMI cable (1.2 m/3.9 ft.)

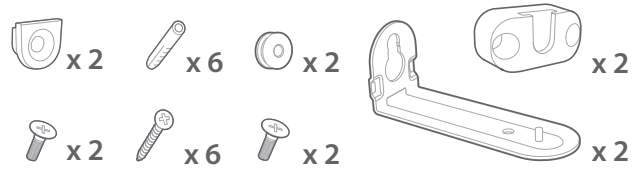


Side caps



(For the soundbar)

Wall-mounting kit



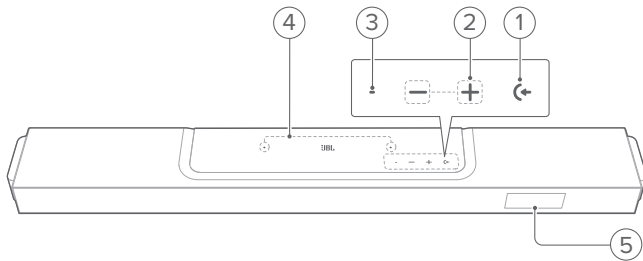
Product information & wall-mounting template



3. PRODUCT OVERVIEW

3.1 Soundbar

3.1.1 Controls



1) ← (Source)

- Switch on
- Select a sound source: TV (default, for audio input from TV connection where the **HDMI OUT (TV ARC/ TV eARC)** connector is prioritized over the **OPTICAL** connector), Bluetooth or HDMI IN

2) -/+ (Volume)

- Switch on
- Decrease or increase the volume
- Press and hold to decrease or increase the volume continuously
- Press the two buttons together to mute or unmute

3) Status indicator

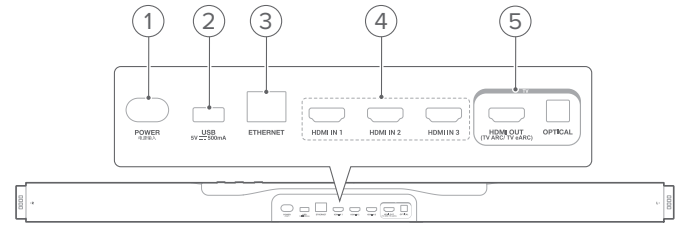
System:		
	Regular flashing (white)	System startup
	Fast flashing (white)	Software updating in progress
	Solid (amber)	Restoring factory settings
Network connection:		
	Slow breathing (white)	Entering Wi-Fi setup mode, or network disconnected
	Solid (green)	Soundbar discovered by the JBL One app
	Solid (white)	Network connected
	Solid (yellow)	Weak Wi-Fi connection

4) Microphone

- For sound calibration

5) Status display

3.1.2 Rear connectors



1) POWER

- Connect to power (with the supplied power cord)

2) USB

- USB connector for software update

3) ETHERNET

- Connect to your home network through an Ethernet cable

4) HDMI IN (1/ 2/ 3)

- Connect to the HDMI output on your digital device

5) TV connectors

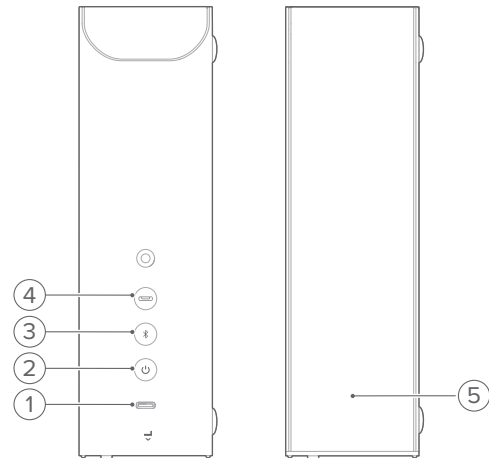
HDMI OUT (TV ARC/ TV eARC)

- Connect to the HDMI ARC / HDMI eARC input on your TV

OPTICAL

- Connect to the optical output on your TV or digital device

3.2 Detachable speakers



1) USB Type-C connector

- For battery charging

2) ⏻ (Power)

- Press to switch on
- Press and hold for more than 3 seconds to switch off

3) 📶 (Bluetooth mode)

- Press to switch to the Bluetooth mode (for the detachable speakers to work as standalone Bluetooth speakers)
- Source indicator

	Solid (blue)	Bluetooth mode selected
--	--------------	-------------------------

- In the Bluetooth mode, press to enter the Bluetooth pairing mode
- In the Bluetooth mode, press and hold for more than 5 seconds to enter the Bluetooth Stereo pairing mode (to connect to the other detachable speaker and set up a Bluetooth stereo system)



4) (soundbar mode)

- Press to switch to the soundbar mode (for the detachable speakers to work as the rear surround speakers of the soundbar)
- Source indicator


<input type="radio"/>	Solid (white)	Soundbar mode selected
-----------------------	---------------	------------------------

5) Status indicator






- For battery power

	Flashing (red)	Low battery
	Solid (red)	Battery charging in progress

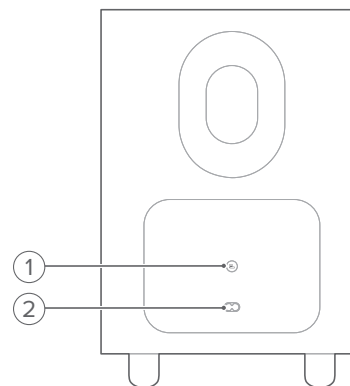
- For wireless connection status

<input type="radio"/>	Slow flashing (white)	Disconnected from the soundbar
	Fast flashing (white)	Connecting to the soundbar
<input type="radio"/>	Solid (white)	Connected to the soundbar

- For Bluetooth connection status




	Regular flashing (blue)	Bluetooth pairing
	Solid (blue)	Bluetooth connected
	Slow flashing (blue)	Bluetooth not connected
	Regular flashing (cyan)	Connecting to the other detachable speaker (Bluetooth Stereo pairing mode)
	Solid (cyan)	Connected to the other detachable speaker (Bluetooth Stereo connected)

3.3 Subwoofer



1)

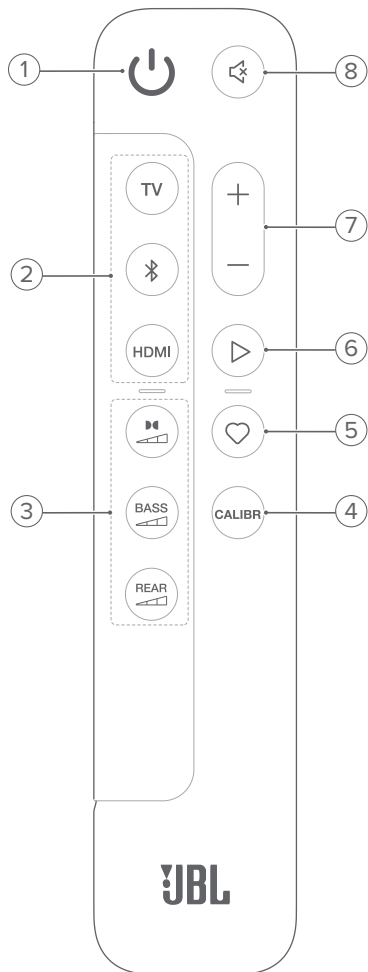
- Connection status indicator

<input type="radio"/>	Solid (white)	Connected to the soundbar
	Fast flashing (white)	Pairing mode
	Slow flashing (white)	Reconnecting or exiting the pairing mode
	Solid (amber)	Standby mode

2) Power connector

- Connect to power (with the supplied power cord)

3.4 Remote control



- 1)
 - Switch on or to standby
- 2) **Source selectors**

TV

 - Select the TV source (default, for audio input from TV connection where the **HDMI OUT (TV ARC/ TV eARC)** connector is prioritized over the **OPTICAL** connector)

(Bluetooth)

 - Select the Bluetooth source
 - Press and hold to enter the Bluetooth pairing mode

HDMI

 - Repeatedly press to switch between the **HDMI IN** sources: HDMI 1 (default)/ 2/ 3
- 3) **Sound effect buttons**
 - Select the level of Dolby Atmos/DTS:X effect: middle (default), high or low

BASS

 - Select the bass level for subwoofer: 1/2/3 (default)/4/5

REAR
 (available when both of the detachable rear speakers are undocked from the soundbar)

- Select the surround sound level for rear speakers: middle (default), high, muted or low

- 4) **CALIBR**
 - Press to start sound calibration
- 5) **(Moment)**
 - Press to directly access the playlist or speaker settings that you have personalized in the JBL One app
- 6) **(Playback controls during the music streaming over JBL One app, Chromecast built-in™, AirPlay, Alexa Cast or Bluetooth)**
 - Single press: Pause or resume playback
 - Double press: Next track
 - Triple press: Previous track
- 7) **+ / -**
 - Increase or decrease the volume
 - Press and hold to increase or decrease the volume continuously.
- 8) **(Mute)**
 - Mute/unmute

3.4.1 App-enabled control

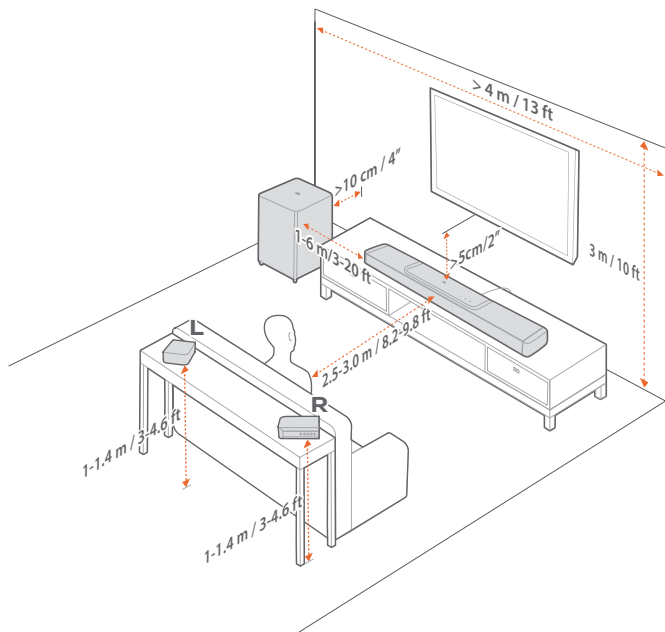
With the JBL One app on your Android and iOS device, you can do the following:

- Wi-Fi setup;
- Audio calibration & demo;
- Personalize audio settings;
- Manage and control device;
- Music service integration;
- Additional features.

4. PLACE

4.1 Desktop placement

Place the soundbar, detachable speakers and subwoofer on a flat and stable surface. Refer to the recommended distance in the following diagram.



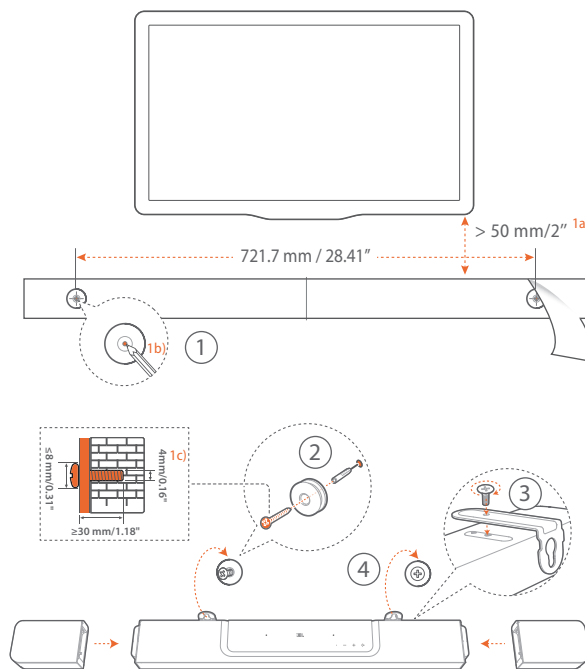
NOTES:

- The power cord shall be properly connected to power.
- Do not place any objects on the top of the soundbar, detachable speakers or subwoofer.
- Charge the detachable speakers in time to ensure sufficient battery power (See “[6.2 Charge the detachable speakers](#)”).
- Use the supplied side caps to cover the two ends of the soundbar after you detach the rear surround speakers (See Step 5 under “[4.2.2 Wall-mount the detachable speakers as rear surround speakers](#)”).

4.2 Wall-mounting

Wall-mount the soundbar and detachable rear speakers together or separately.

4.2.1 Wall-mount the soundbar



1. Preparation:

- With the distance of about 2" (50mm) from your TV, stick the supplied wall-mounting template to a wall by using adhesive tapes.
- Use your ballpen tip to mark the screw holder location. Remove the template.
- On the marked location, drill a 4 mm/0.16" hole.

2. Install the support for wall-mounting bracket.

- With the screw, fasten the L-shaped wall-mounting bracket onto the bottom of the soundbar.

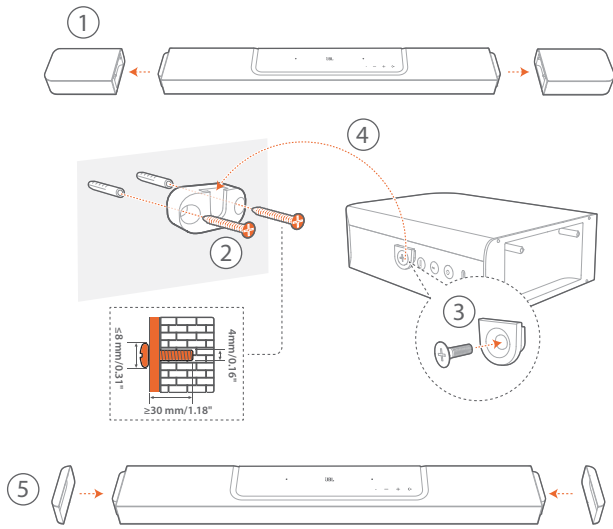
4. Mount the soundbar.

- After the soundbar is securely wall-mounted, dock the two detachable speakers onto the soundbar.

NOTES:

- Make sure that the wall can support the weight of the soundbar.
- Install on a vertical wall only.
- Avoid a location under high temperature or humidity.
- Before wall-mounting, make sure that cables can be properly connected between the soundbar and external devices.
- Before wall-mounting, make sure that the soundbar is unplugged from power. Otherwise, it may cause an electric shock.
- To move the soundbar, first remove the two detachable speakers to avoid accidental damage.
- Use the supplied side caps to cover the two ends of the soundbar after you detach the rear surround speakers (See Step 5 under “[4.2.2 Wall-mount the detachable speakers as rear surround speakers](#)”).

4.2.2 Wall-mount the detachable speakers as rear surround speakers



1. From the soundbar, undock the two detachable speakers.
2. Install the wall-mounting bracket.
3. Fasten the support onto the back of the speakers.
4. Mount the speakers.
5. Install the side caps as needed.

5. CONNECT

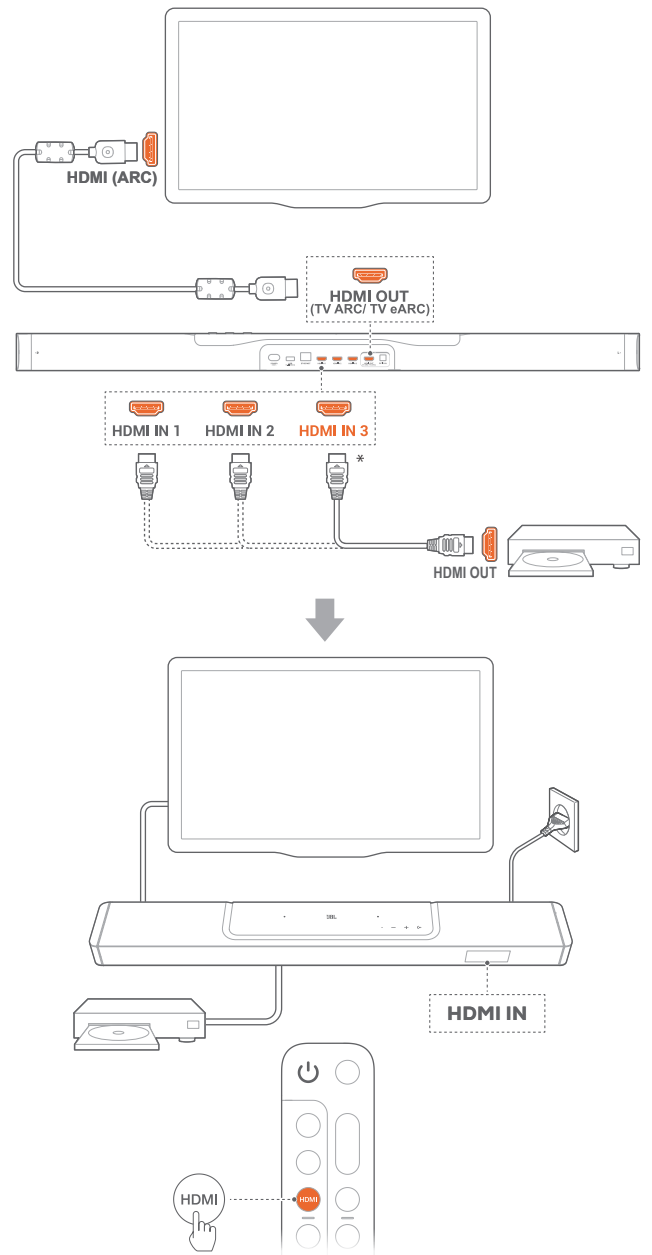
5.1 Connection with your TV and digital devices

For audio playback through the soundbar, connect the soundbar with your TV through the supplied HDMI cable or an optical cable (sold separately).

An HDMI connection supports digital audio and video with a single connection. HDMI connectivity is the best option for your soundbar.

5.1.1 TV (HDMI ARC / eARC)

(Recommended connection for the best Dolby Atmos / DTS:X experience)

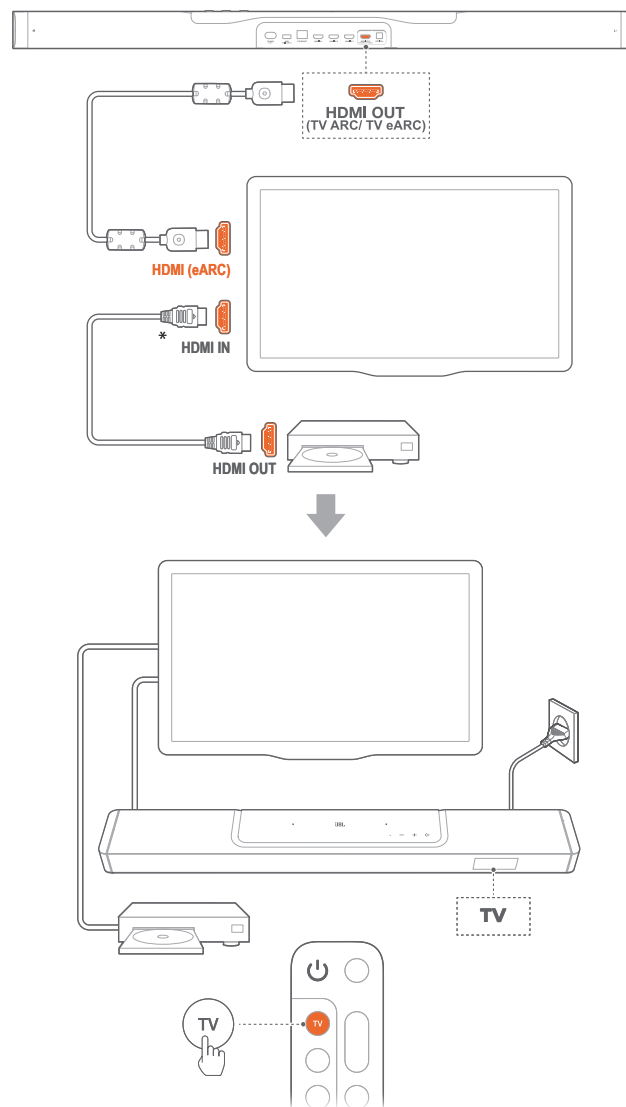


1. Connect the soundbar with the **HDMI IN (ARC / eARC)** connector on your TV by using the supplied HDMI cable.
 - On your TV, check that HDMI-CEC and HDMI ARC / eARC have been enabled. Refer to the owner's manual of your TV for more information.
2. Use an HDMI cable (V2.0 or later) to connect the soundbar with your digital device, such as a set-top box, DVD/Blu-ray player or game console.
 - On your digital device, check that HDMI-CEC has been enabled. Refer to the owner's manual of your digital device for more information.
 - On your digital device, select "Bitstream" or "Raw data" in the audio output settings for the best Dolby Atmos experience.
3. To play audio from the digital device connected to the soundbar, repeatedly press **HDMI** on the remote control to select the HDMI source.

NOTES:

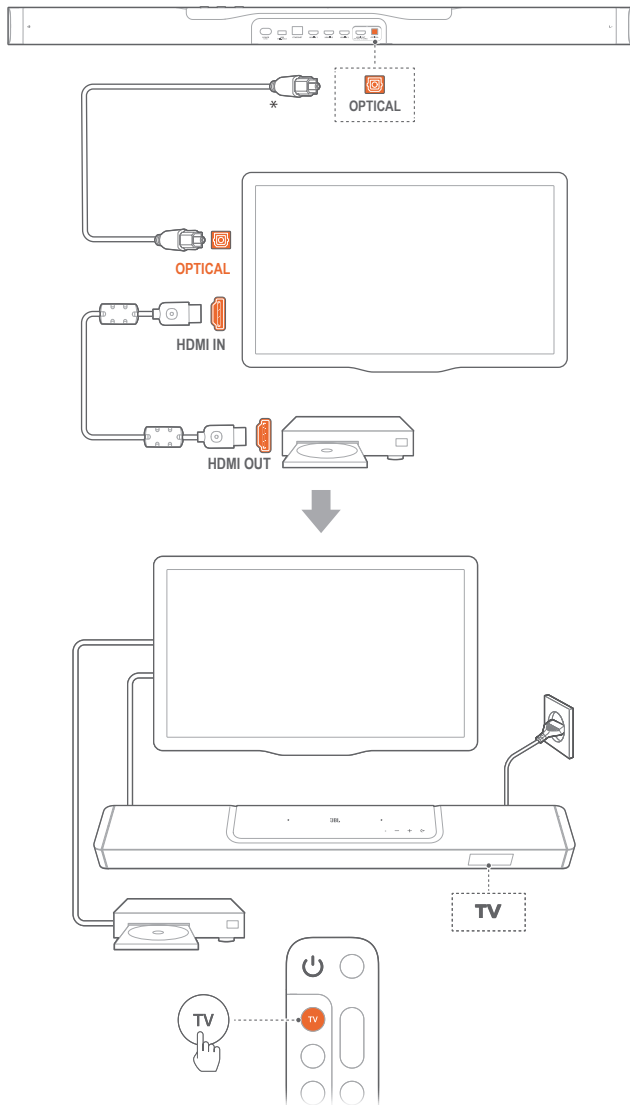
- If your TV does not support HDMI eARC, make sure that you connect your digital device through the HDMI IN connector on the soundbar instead of your TV. Otherwise, the Dolby Atmos information cannot pass through the HDMI (ARC) connectors from the TV to the soundbar.

5.1.2 TV (HDMI eARC)



1. Connect the soundbar with the **HDMI IN (eARC)** connector on your TV by using the supplied HDMI cable.
 - On your TV, check that HDMI-CEC and HDMI ARC / eARC have been enabled. Refer to the owner's manual of your TV for more information.
2. Use an HDMI cable (eARC compatible, V2.0 or later) to connect your TV with your digital device, such as a streaming device, set-top box, DVD/Blu-ray player or game console.
 - On your digital device, check that HDMI-CEC has been enabled. Refer to the owner's manual of your digital device for more information.
 - On your TV and digital device, select "Bitstream" or "Raw data" in the audio output settings for the best Dolby Atmos experience.
3. To play audio from the digital device connected to your TV, select **TV** on the remote control.

5.1.3 OPTICAL



NOTES:

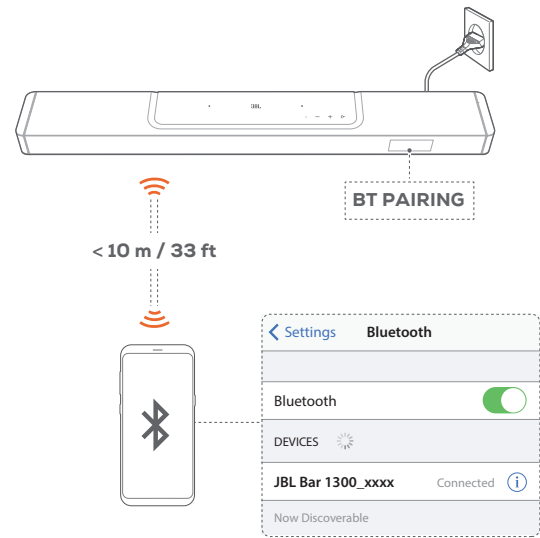
- With the 6 up-firing speakers and the detachable surround speaker design, the Dolby surround upmixer of the soundbar can expand the legacy channel-based audio of Dolby Digital format, including 5.1 and 7.1 content, and provide an immersive 3D Atmos experience.
1. Connect the soundbar with your TV by using an optical cable.
 2. Use an HDMI cable (V2.0 or later) to connect your TV with your digital device, such as a streaming device, set-top box, DVD/Blu-ray player or game console.
 3. To play audio through the optical cable, select **TV** on the remote control.

NOTES:

- * The HDMI cable (for digital device connection) and the optical cable are sold separately.
- Full compatibility with all HDMI-CEC devices is not guaranteed.
- When both HDMI ARC and optical cables are connected to the soundbar for audio input from TV connection, the HDMI ARC connection is prioritized.

5.2 Bluetooth connection

Through Bluetooth, connect the soundbar with your Bluetooth device, such as a smartphone, tablet and laptop.



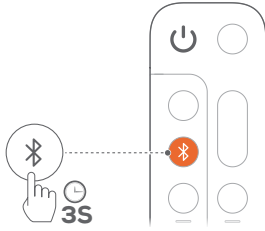
5.2.1 Connect a Bluetooth device

1. To select Bluetooth source, press **⏮** on the soundbar or **📶** on the remote control.
 - **"BT PAIRING"**: Ready for BT pairing
2. On your Bluetooth device, enable Bluetooth and search for **"JBL Bar 1300_xxxx"** within three minutes.
 - **Successful connection**: The device name is displayed if your device is named in English. A confirmation tone is heard.

5.2.2 To reconnect the last paired device

Your Bluetooth device is retained as a paired device when the soundbar goes to standby mode. Next time you switch to the Bluetooth source, the soundbar reconnects the last paired device automatically.

5.2.3 To connect to another Bluetooth device



1. In the Bluetooth source, press and hold **⏮** on the soundbar or **⏮** on the remote control until **"BT PAIRING"** is displayed.
 - The soundbar enters the Bluetooth pairing mode.
2. Follow the Step 2 under ["5.2.1 Connect a Bluetooth device"](#).
 - If the device has ever been paired with the soundbar, first unpair **"JBL Bar 1300_xxxx"** on the device.

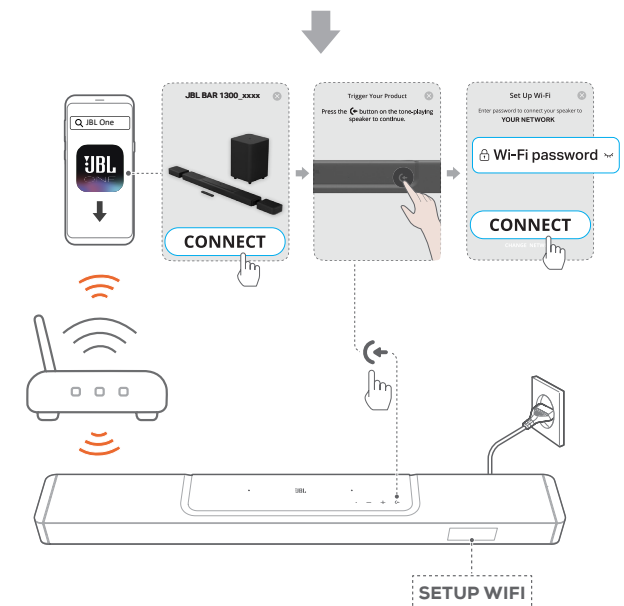
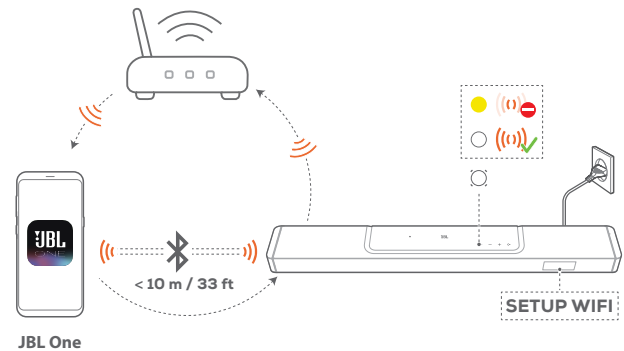
NOTES:

- The Bluetooth connection will be lost if the distance between the soundbar and Bluetooth device exceeds 33 ft (10 m).
- Electronic devices may cause radio interference. Devices that generate electromagnetic waves must be kept away from the soundbar, such as microwaves and wireless LAN devices.

5.3 Connection with your home network

Through Wi-Fi or an Ethernet cable, connect the soundbar to your home network. With the JBL One app and the supported streaming services (Chromecast built-in, AirPlay and Alexa Cast), the soundbar allows you to stream audio on smartphones or tablets through the soundbar speakers.

1. On the soundbar, enter the Wi-Fi setup mode:
 - Press any button to switch on (See ["7.1 Power-on/Auto standby/Auto wakeup"](#)).
 - If the soundbar has not been connected to a network, the screen shows **"HELLO"** and then, **"SETUP WIFI"**.
 - To re-enter the Wi-Fi setup mode, press and hold **+** and **-** until **"SETUP WIFI"** is displayed.
2. On your Android or iOS device, add the soundbar to your home Wi-Fi network through the JBL One app.
 - a) Connect your Android or iOS device to your home Wi-Fi network. Download the JBL One app.
 - b) Follow the app instructions to complete setup.



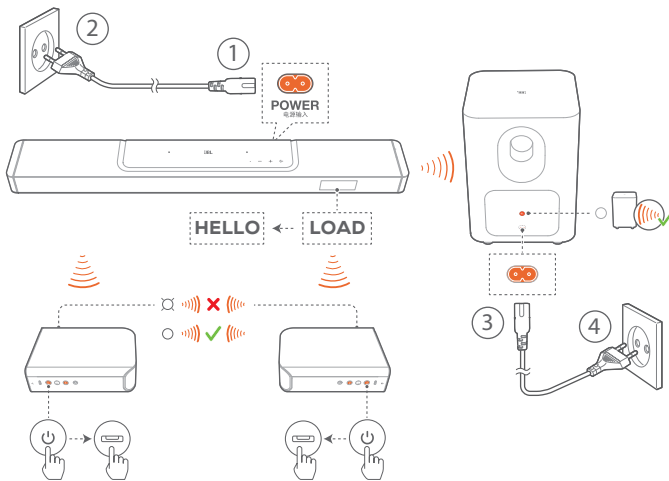
3. If necessary, use an Ethernet cable to connect the soundbar to your home network.
 - Make sure that you connect to the same network as you did during the setup.

NOTES:

- On your Android or iOS device, you can name the soundbar in the JBL One app.
- On your iOS device, add the soundbar to the Apple Home app and manage it together with other AirPlay 2-compatible speakers.
- On your iOS device, if the soundbar has been added to your home Wi-Fi network, you can start AirPlay streaming from an AirPlay-compatible app (See ["7.7 Play through AirPlay"](#)).
- Availability of online music streaming services varies by country.
- Some features require subscriptions or services not available in all countries.

6. SETUP

6.1 Connect the detachable rear speakers and subwoofer



1. Connect the soundbar to power by using the supplied power cord.
 - The screen on the soundbar shows “LOAD” and then, “HELLO”.
2. Do the following to start the connection:
 - Connect the subwoofer to power by using the supplied power cord;
 - Dock the detachable speakers onto the soundbar, or press and then, on the detachable speakers to fast re-connect to the soundbar.
 - The soundbar connects the subwoofer automatically.
Connected: turns solid white on the subwoofer.
 - The soundbar connects the detachable speakers automatically.
Connected: The status indicator turns solid white on the detachable speakers.

NOTES:

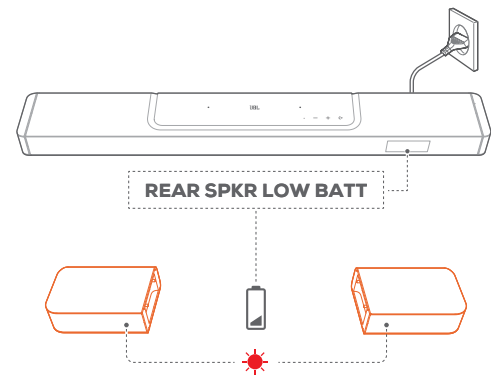
- Use the supplied power cords only.
- Before connecting to power, make sure that you have completed all other connections (See “[5.1 Connection with your TV and digital devices](#)”).

6.2 Charge the detachable speakers

When the detachable surround speakers are out of battery, their wireless connection with the soundbar will be lost.

The first time you use the two detachable speakers, charge them for about 4 hours to ensure sufficient battery power.

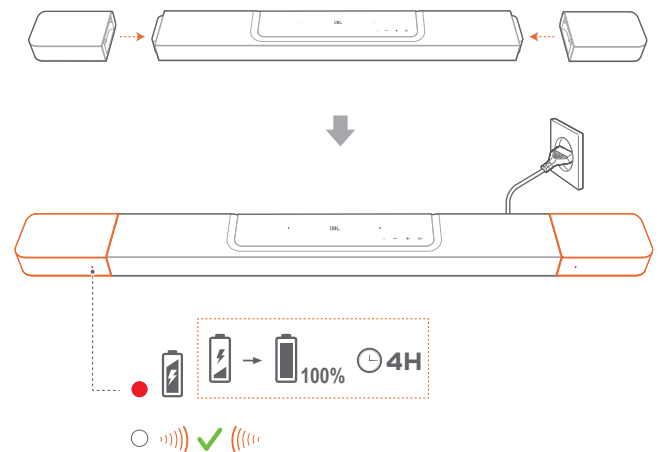
- When the battery power runs low, the status indicator flashes red on the detachable surround speakers and “REAR SPKR LOW BATT” is displayed on the soundbar.
- When the battery power runs out, “DOCK REAR SPKR” is displayed on the soundbar.



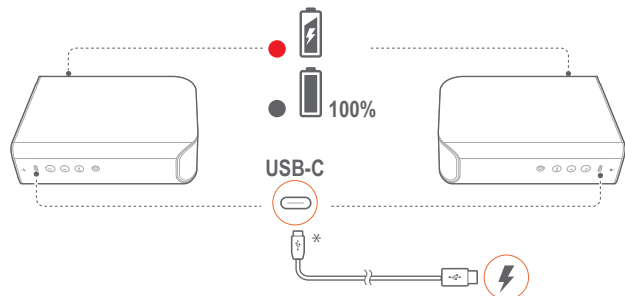
6.2.1 Charge by docking the detachable speakers

Charging starts when you dock the detachable speakers onto the soundbar.

- When the soundbar switches to standby mode, turns on; turns off when the detachable speakers are fully charged.
- It takes about 4 hours for the empty battery to be fully charged.



6.2.2 Charge through a USB cable



- Use a USB-C cable to connect the detachable speakers to power respectively.
- For the detachable speakers, the status indicator is used for status indication of both battery power and wireless connection (See “[3.2 Detachable speakers](#)”).

NOTES:

- * The USB-C cable is sold separately.

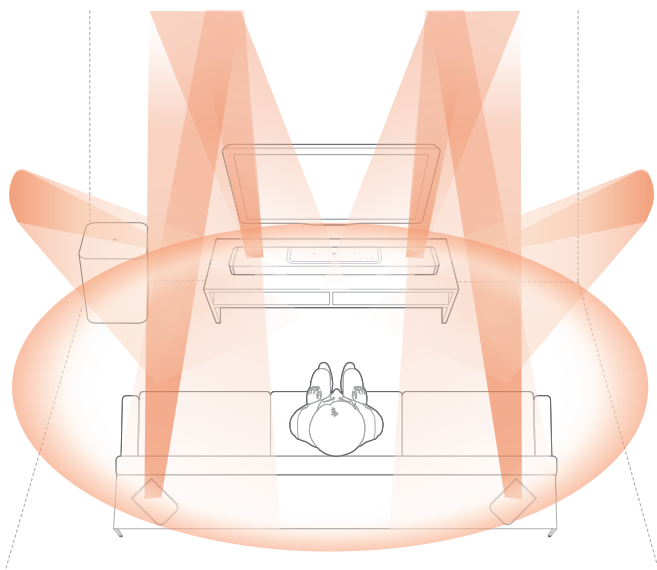
6.3 3D surround sound

6.3.1 Sound calibration

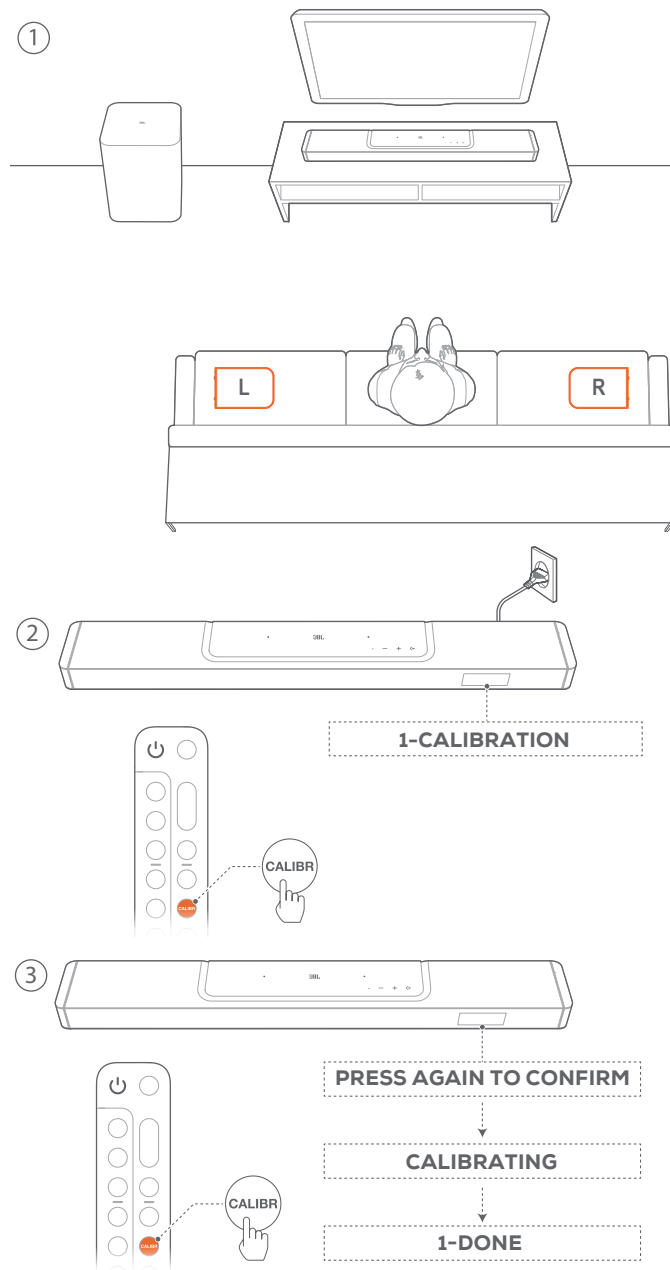
Optimize your 3D surround sound experience for your unique listening environment.

For sound calibration, do the following:

- Make sure that your room is quiet;
- Make sure that the soundbar and the two detachable rear speakers are fully in sight of each other, without obstacles in between.
- Make sure that the left and right rear speakers are properly placed, the **L** speaker on the left and the **R** speaker on the right.

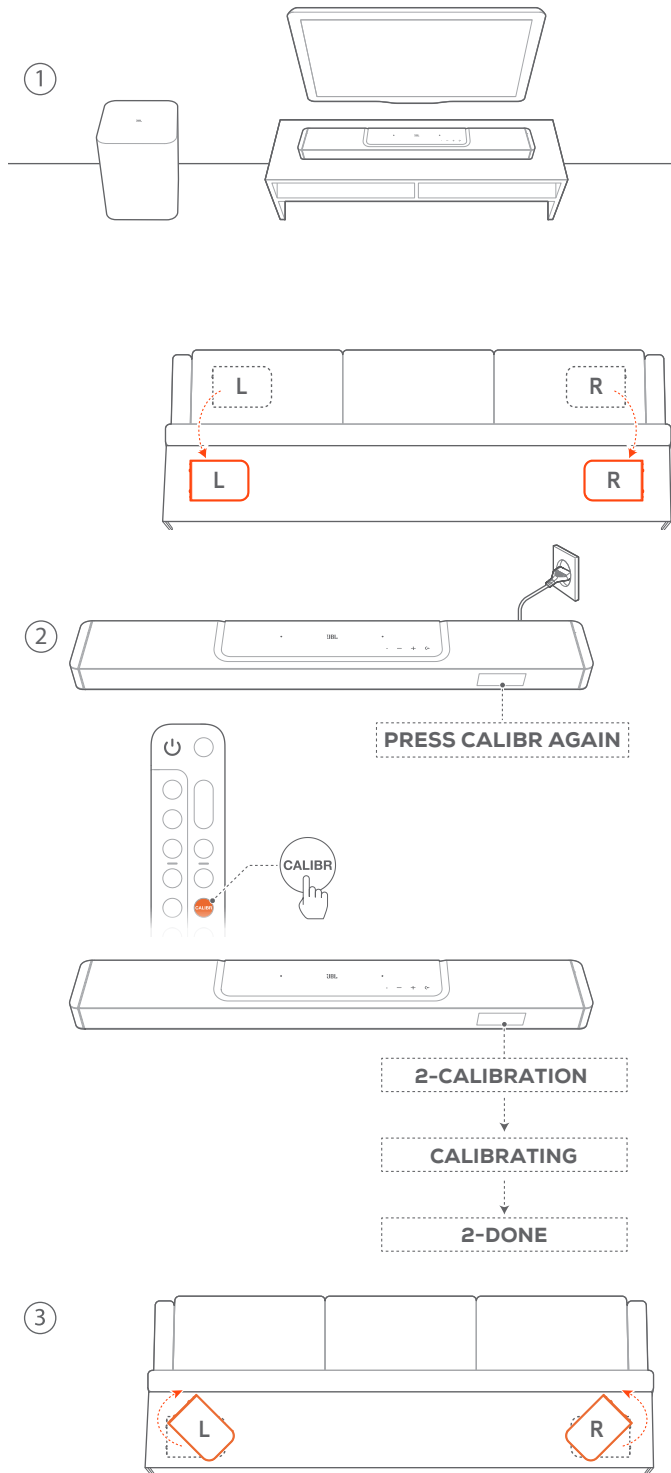


1) Calibrate the listening zone



1. Place the detachable rear speakers beside your seating position.
 - Make sure that the two detachable speakers have been connected to the soundbar (See “[6.1 Connect the detachable rear speakers and subwoofer](#)”).
2. On the remote control, press **CALIBR** to start calibration.
 - “**1-CALIBRATION**” is displayed on the soundbar.
3. When “**PRESS AGAIN TO CONFIRM**” is displayed, press **CALIBR** again.
 - Countdown starts from 5 to 1.
 - Calibration tone is heard. Audio calibration starts.
 - “**CALIBRATING**”: Calibration in progress
 - “**1-DONE**”: Calibration of the listening zone is completed successfully.

2) Calibrate the speaker position



1. Place the detachable rear speakers in your desired location.
2. On the remote control, press **CALIBR**.
 - “2-CALIBRATION” is displayed on the soundbar.
 - Countdown starts from 5 to 1.
 - Calibration tone is heard. Audio calibration starts.
 - “CALIBRATING”: Calibration in progress
 - “2-DONE”: Calibration of the speaker position is completed successfully.

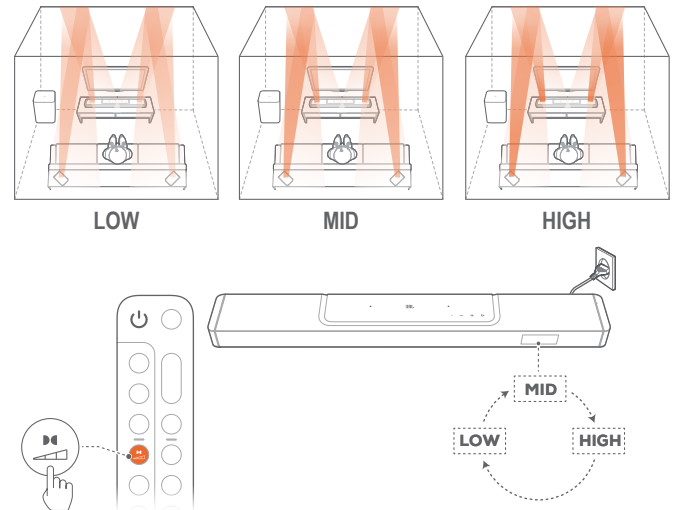
3. Rotate for the best listening experience.

NOTES:

- During sound calibration, all buttons on the remote control are disabled except for **⏻** and **CALIBR**.

6.3.2 Dolby Atmos® / DTS:X®

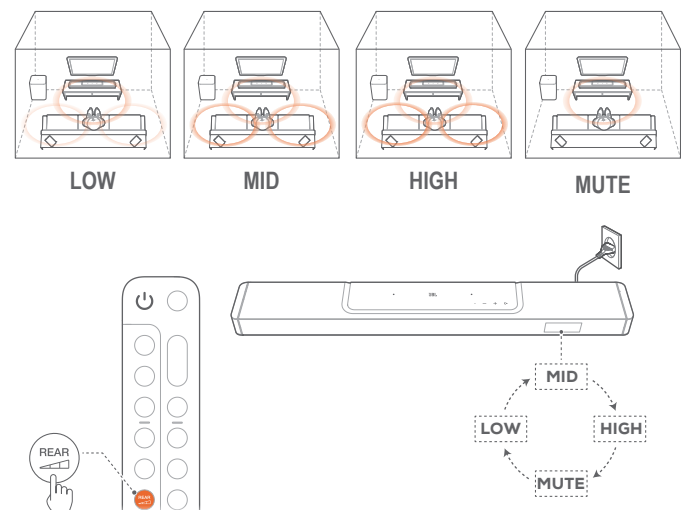
With Dolby Atmos or DTS:X, overhead audio distribution is provided for powerful 3D sound immersion.




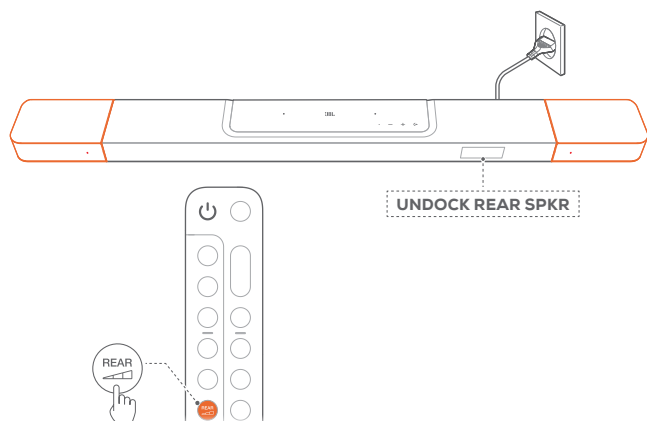
1. To play the surround sound of DOLBY ATMOS or DTS:X, connect and play your Blu-ray player or streaming device as described under “[5.1 Connection with your TV and digital devices](#)”.
2. To select suitable strength for Dolby Atmos or DTS:X, press **DOLBY** on remote control to toggle between middle (default), high, or low.

6.3.3 Rear adjustment

With both of the detachable rear speakers undocked, you can select the surround sound level.

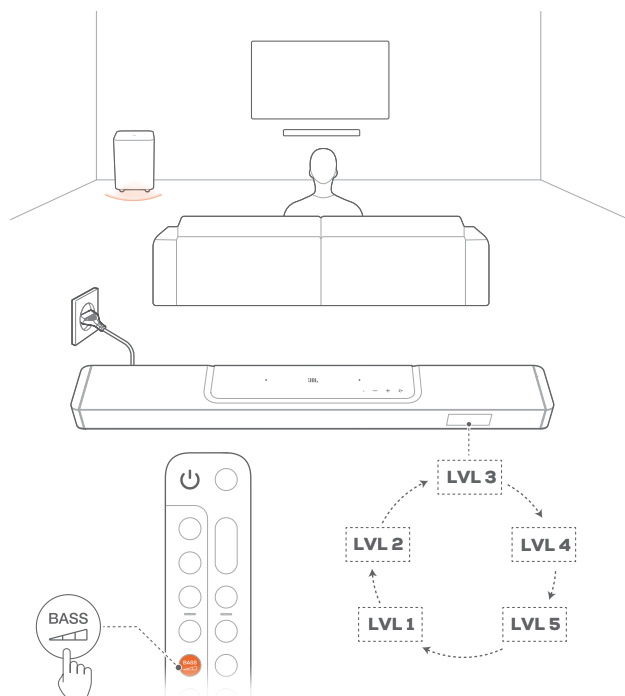



1. Check that the soundbar and the detachable rear speakers are connected wirelessly (See [“6.1 Connect the detachable rear speakers and subwoofer”](#)).
2. On the remote control, press  to toggle between surround sound levels.
 - “MID” / “HIGH” / “MUTE” / “LOW” is displayed (Default: “MID”).
 - “UNDOCK REAR SPKR” is displayed if the detachable rear speakers have been docked onto the soundbar.



6.3.4 Bass adjustment

You can make bass adjustment as needed.



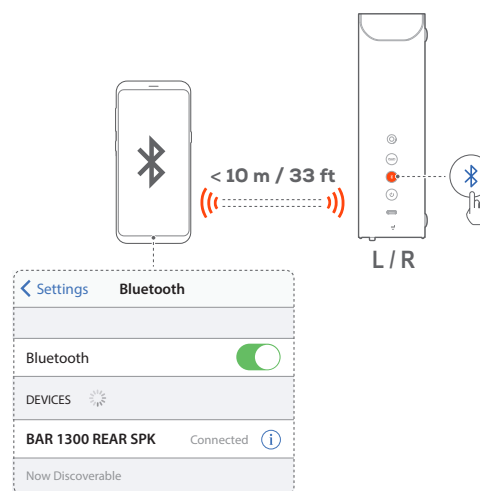
- On the remote control, press  to toggle between bass levels.
 - “LVL1” to “LVL5” is displayed (Default: “LVL3”).

6.4 Use the detachable speakers as standalone Bluetooth speakers




For music playback, you can set up the detachable rear speakers as standalone Bluetooth speakers or a Bluetooth stereo system.

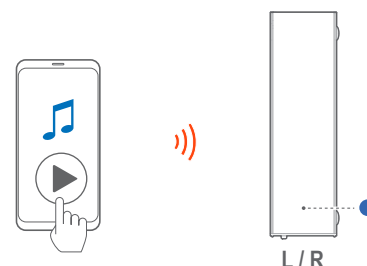
6.4.1 Standalone Bluetooth speakers

Either of the detachable rear speakers can be a standalone Bluetooth speaker.



Connect a Bluetooth device

1. On the left or right speaker, press  to switch to the Bluetooth mode.
 - : Ready for Bluetooth pairing
 - The detachable rear speaker disconnects from the soundbar.
2. On your Bluetooth device, enable Bluetooth and search for “BAR 1300 REAR SPK” within three minutes.
 - : Successful connection

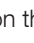



3. Start audio play on your Bluetooth device.

To reconnect the last paired device

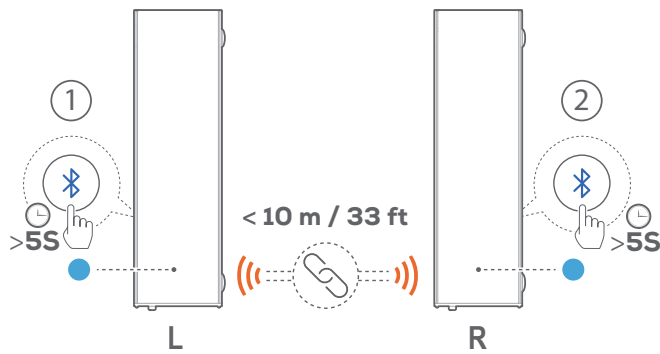
Your Bluetooth device is retained as a paired device when the speaker goes to standby mode. Next time you switch to the Bluetooth mode, the speaker reconnects the last paired device automatically.





To connect to another Bluetooth device

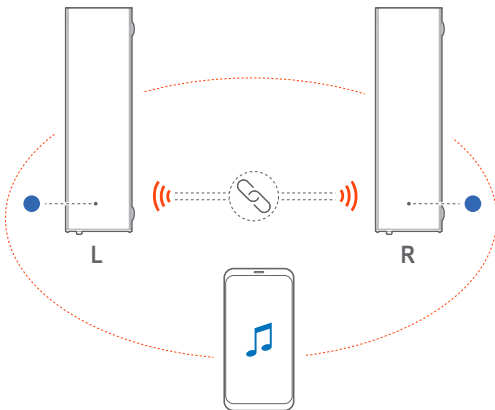
1. In the Bluetooth mode, press  on the left or right speaker.
 - : The speaker enters the Bluetooth pairing mode.
2. Follow the Step 2 under [“Connect a Bluetooth device”](#).

6.4.2 Standalone Bluetooth stereo system

By connecting the two detachable speakers, you can set up a stereo music system with L (left) and R (right) channels.

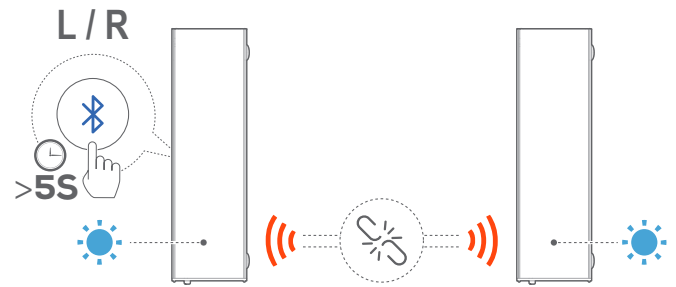





1. Make sure that the left and right rear speakers are properly placed, the **L** speaker on the left and the **R** speaker on the right.
2. Connect the two speakers:
 - a) On one speaker, press and hold  until the status indicator flashes cyan.
 - b) Within three minutes, press and hold  on the other speaker until the status indicator flashes cyan.
 - : Ready for Bluetooth Stereo pairing
 - : Bluetooth Stereo connected



3. The two speakers start to play music from the device connected to the primary speaker.

To break the Bluetooth Stereo link between the two speakers



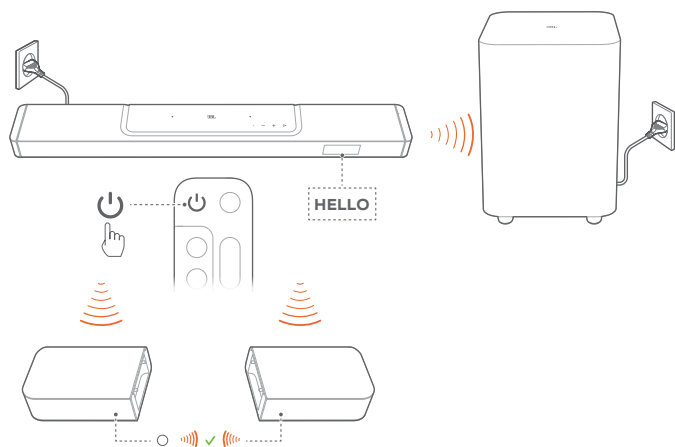
- On either of the connected speakers, press and hold  until the status indicator flashes cyan.
 - : You break the Bluetooth Stereo link between the two speakers.
 - : The speakers switch to the Bluetooth pairing mode and reconnect the last paired Bluetooth device respectively.

NOTES:

- The Bluetooth connection will be lost if the distance between the soundbar and Bluetooth device exceeds 33 ft (10 m).
- Electronic devices may cause radio interference. Devices that generate electromagnetic waves must be kept away from the Soundbar, such as microwaves and wireless LAN devices.

7. PLAY

7.1 Power-on/Auto standby/Auto wakeup



7.1.1 Switch on

- To switch on, press any button on the soundbar, or \odot on the remote control.
 - “HELLO” is displayed.
 - The subwoofer is reconnected to the soundbar automatically. **Connected:** Speaker icon turns solid white.
 - The detachable speakers are reconnected to the soundbar automatically. **Connected:** The status indicator turns solid white (\circ)

7.1.2 Auto standby

If the soundbar is inactive for more than 10 minutes, it will switch to standby mode automatically. “STDBY” is displayed.

- The subwoofer also goes to standby, and Speaker icon turns solid amber.
- The detachable speakers switch to standby, and the status indicator turns off for wireless connection status.
- Next time you switch on the soundbar, it returns to the last selected source.

NOTES:

- On the detachable speakers, press and hold for more than 3 seconds to switch off. To reconnect to the soundbar, press \odot again and then, if necessary, press Speaker icon to switch to the soundbar mode.

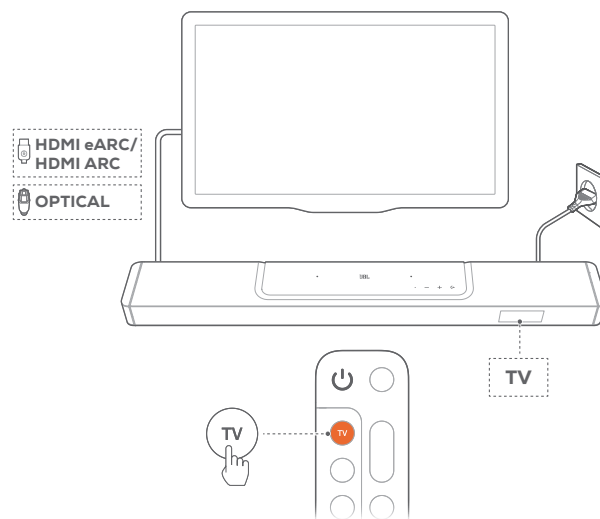
7.1.3 Auto wakeup

In standby mode, the soundbar will wake up automatically when

- the soundbar is connected to your TV through the HDMI ARC connection and your TV is switched on;
- the soundbar is connected to your TV through the HDMI ARC connection and through the HDMI connection, is also connected to your digital device such as a set-top box, DVD/Blu-ray player or game console, and your digital device is switched on;
- the soundbar is connected to your home network and audio is streamed to the soundbar through the music streaming services over JBL One app, Chromecast built-in, AirPlay or Alexa Cast.

7.2 Play from the TV source

With the soundbar connected, you can enjoy TV audio from the soundbar speakers.



1. Make sure that your TV is set to support external speakers and the built-in TV speakers are muted. Refer to the owner's manual of your TV for more information.
2. Make sure that the soundbar has been properly connected to your TV (See “[5.1 Connection with your TV and digital devices](#)”).
3. To select the TV source, press TV button on the soundbar or **TV** on the remote control.
 - “TV”: The TV source is selected.
 - In the factory settings, the TV source is selected by default.

NOTES:

- If the soundbar is connected to your TV through both an HDMI cable and an optical cable, the HDMI cable source is selected for the TV connection.

7.2.1 TV remote control setup

To use your TV remote control for both your TV and the soundbar, check that your TV supports HDMI-CEC. If your TV does not support HDMI-CEC, follow the steps under “[TV remote control IR learning](#)”.

HDMI-CEC

If your TV supports HDMI-CEC, enable the functions as instructed in your TV user manual. You can control the volume +/-, mute/unmute, and power on/standby functions on your soundbar through the TV remote control.

TV remote control IR learning

Through IR learning, your Infra-red TV remote control can learn some commands of the soundbar.

1. On the soundbar, press and hold TV button and + until “LEARNING” is displayed.
 - You enter the TV remote control learning mode.

2. Point your TV remote control at the soundbar. Follow the screen instructions to operate the buttons on your TV remote control:

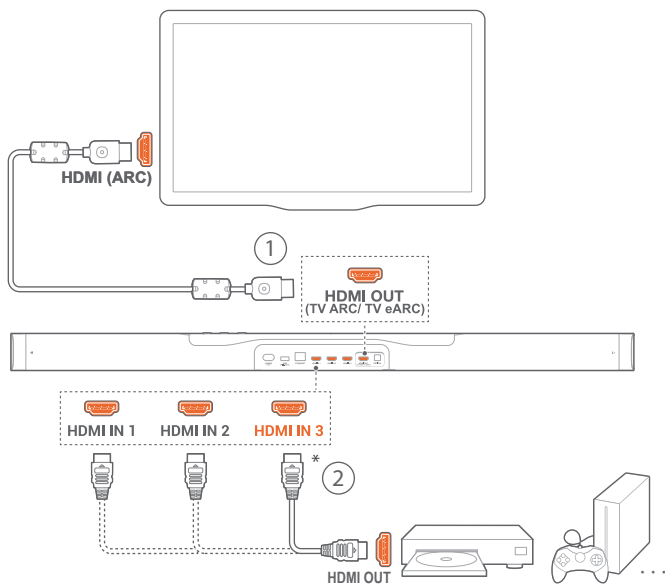
- When any one of “POWER”, “VOL+”, “VOL-”, or “MUTE” is displayed on the soundbar, press the desired button on your TV remote control.
 - “DONE”: The functions of the soundbar button are learnt by your TV remote control buttons.
 - The soundbar returns to the last selected source.
- To stop and exit the TV remote control learning mode, press and hold **←** and **+** on the soundbar until “EXIT LEARNING” is displayed.
 - The learnt functions are discarded.

NOTES:

- The soundbar will exit the TV remote control learning mode automatically if no action is taken for 30 seconds. The learnt functions are discarded.

7.3 Play from the HDMI IN source

With the soundbar connected as shown, your digital device can play video on your TV and audio from the soundbar speakers.



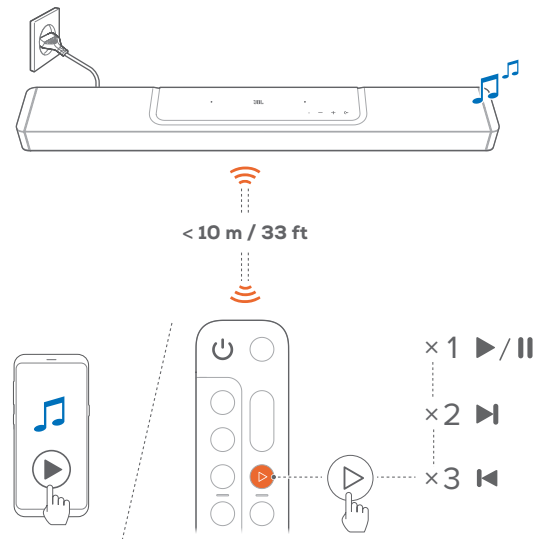
1. Make sure that the soundbar has been properly connected to your TV and digital device (See “5.1 Connection with your TV and digital devices”).
2. Switch on your digital device.
 - Your TV and the soundbar wake up from standby mode and switch to the input source automatically.
 - To select the **HDMI IN** source on the soundbar, toggle **←** on the soundbar or **HDMI** on the remote control.
3. Switch your TV to standby mode.
 - The soundbar and source device are switched to standby mode.

NOTES:

- Full compatibility with all HDMI-CEC devices is not guaranteed.

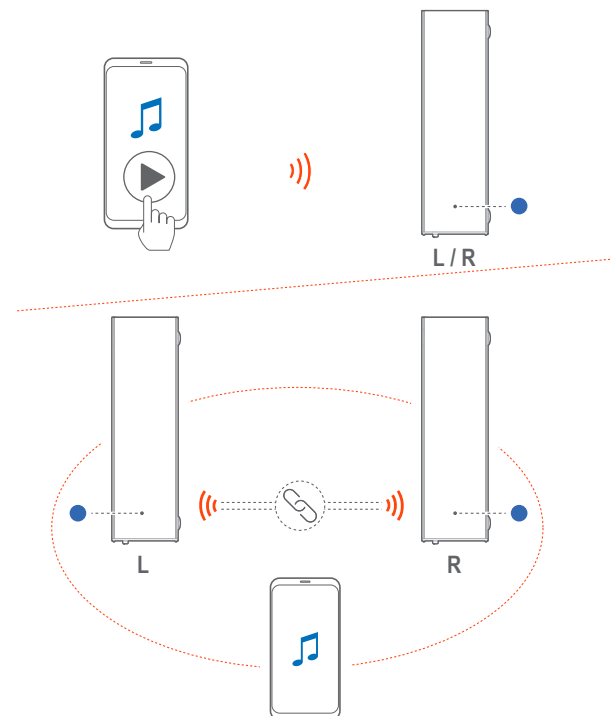
7.4 Play from the Bluetooth source

Through Bluetooth, stream audio play on your Bluetooth device to the soundbar.



1. Check that the soundbar has been properly connected to your Bluetooth device (See “5.2 Bluetooth connection”).
2. To select the Bluetooth source, press **←** on the soundbar or **Bluetooth** on the remote control.
3. Start audio play on your Bluetooth device.
 - Alternatively, press **▶** on the remote control to control playback.
4. Adjust the volume on the soundbar, remote control or your Bluetooth device.

To use the detachable speakers as standalone bluetooth speakers or Bluetooth stereo system

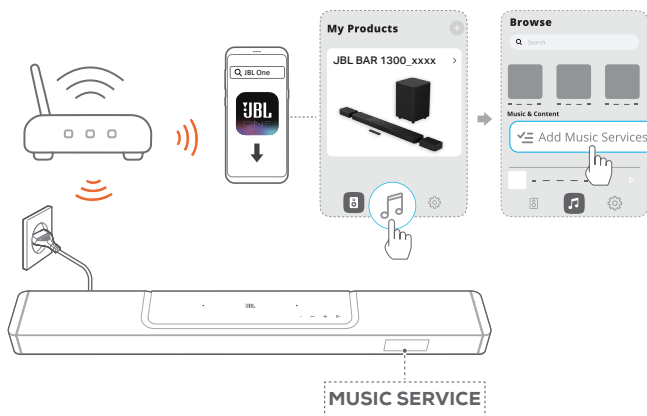


See “[6.4 Use the detachable speakers as standalone Bluetooth speakers](#)” for the information about setup and playback.

7.5 Play through the JBL One app

Through the JBL One app, stream audio from online music services to the soundbar.

- On the soundbar,
 - Check that the soundbar has been properly connected to your home network (See “[5.3 Connection with your home network](#)”).
- On your Android or iOS device,
 - Check that your Android or iOS device has been connected to the same network as the soundbar.
 - Launch the JBL One app, browse available *music streaming services to select music, and then, start music streaming to the connected soundbar.





- To exit from the music playback, switch to other sources.

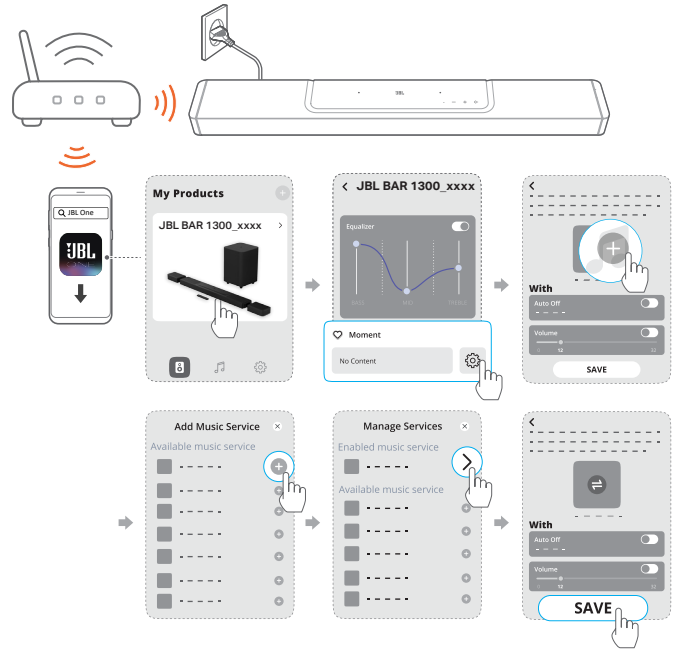
NOTES:


- *Subscription may be needed and not provided by the JBL One app.

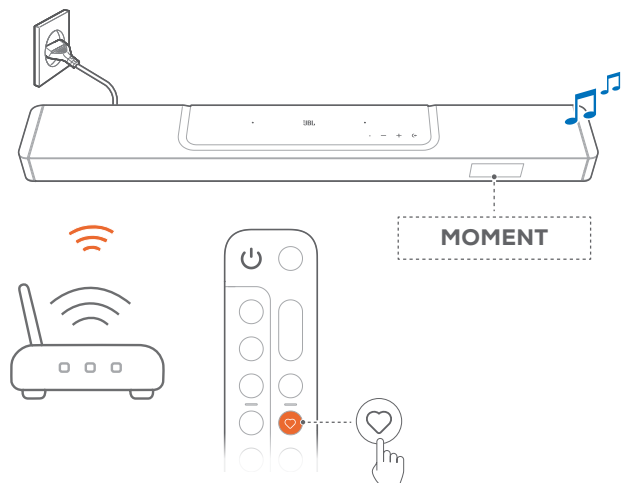
Access your presets with the Moment button

By pressing  on the remote control, you can access the playlist and speaker settings that you have personalized on the JBL One app.

- On the JBL One app,
 - personalize the the  (Moment) feature.



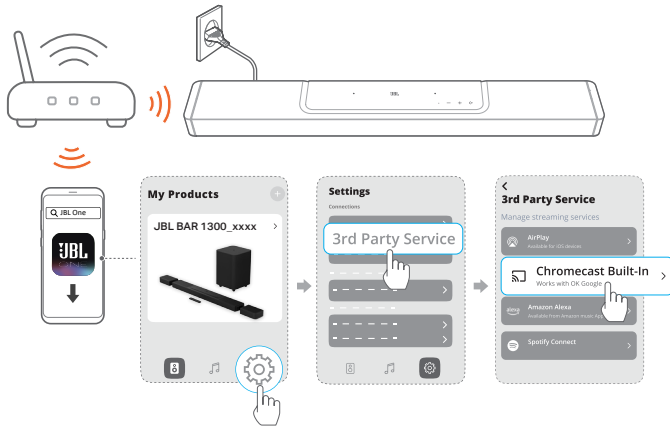
- On the soundbar,
 - press  on the remote control to access the personalized playlist and speaker settings.




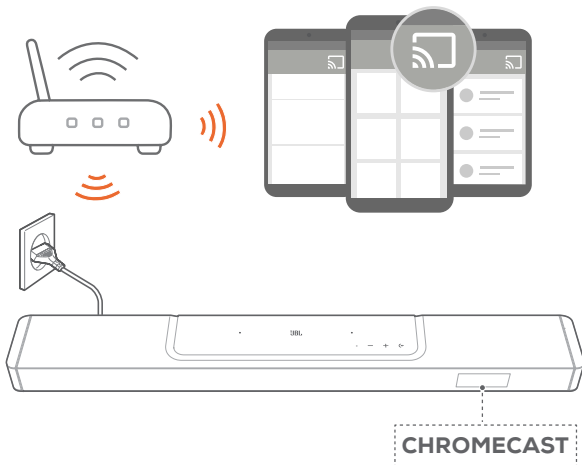
7.6 Play through Chromecast built-in

Through Chromecast built-in, stream audio on your Android or iOS device to the soundbar.

1. On the soundbar,
 - Check that the soundbar has been properly connected to your home network (See “[5.3 Connection with your home network](#)”).
2. On your Android or iOS device,
 - a) Check that your Android or iOS device has been connected to the same network as the soundbar.
 - b) Launch the JBL One app, and check that you have enabled the streaming service of Chromecast built-in.



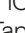
- c) On a Chromecast-enabled app, play music, tap the cast icon  and select the connected soundbar.

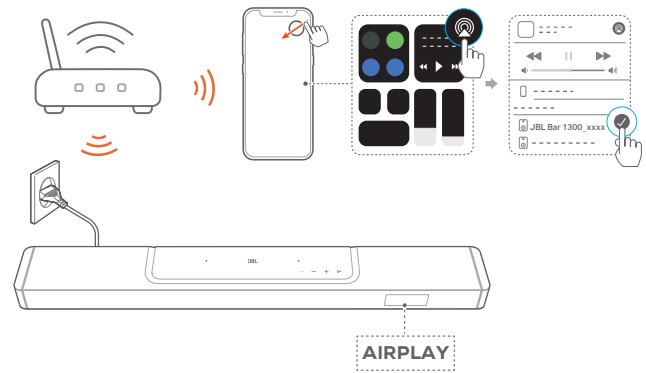


3. To exit from the music playback, switch to other sources.

7.7 Play through AirPlay

Through AirPlay, stream audio on your iOS device to the soundbar.

1. On the soundbar,
 - Check that the soundbar has been properly connected to your home network (See “[5.3 Connection with your home network](#)”).
2. On your iOS device,
 - a) Check that your iOS device has been connected to the same network as the soundbar.
 - b) To enter the Control Center on an iOS device, swipe down from the upper right corner. Tap  to select the connected soundbar and then, start audio streaming from an app.



3. To exit from the music playback, switch to other sources.

7.8 Play through Alexa Cast

With Alexa Cast, you can stream music from the Amazon Music library to the soundbar.

1. Check that the soundbar has been properly connected to your home network (See “[5.3 Connection with your home network](#)”).
2. On your Android or iOS device,
 - a) Check that your Android or iOS device has been connected to the same network as the soundbar.
 - b) Launch the JBL one app, and check that you have enabled the streaming service of Amazon Alexa.



3. Launch the Amazon Alexa app to start music playback.



- Open the Amazon Music app to access the Amazon Music library.
- Make sure that you start music playback from the same Alexa account that you have enabled in the JBL One app. Refer to the Amazon Alexa app for more details.


NOTES:

- The soundbar can support audio streaming and cannot support video streaming.
- During playback through Chromecast built-in, AirPlay or Alexa Cast, music playback pauses on the current connected device when you start music playback on a second connected device.
- When the soundbar switches between your home Wi-Fi and wired network during AirPlay, music playback pauses and will resume in a few minutes, depending on the bandwidth condition of broadband. For the connection to your home wired network, see [“5.3 Connection with your home network”](#).

7.9 Multi-room playback

With the multi-room playback, you can stream music on your Android or iOS device to multiple Chromecast-enabled/ AirPlay / Alexa-enabled speakers.

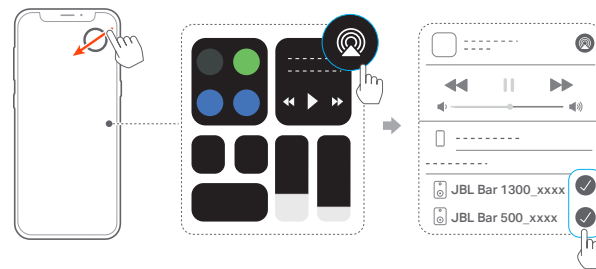
7.9.1 Chromecast built-in


1. Through the Google Home app, connect multiple Chromecast-enabled speakers to the same network, assign them to multiple rooms, and create groups as needed.
2. Run a Chromecast-enabled app on your smartphone or tablet.
3. Play music. Press  and select the grouped speakers.

NOTES:

- To create a multi-room speaker group in the Google Home app, make sure that you have connected all the speakers to the same home network and have used the same Google login account. Refer to the Google Home app for more details.
- Depending on the bandwidth of your local network, you can stream music to up to 6 Chromecast-enabled speakers.

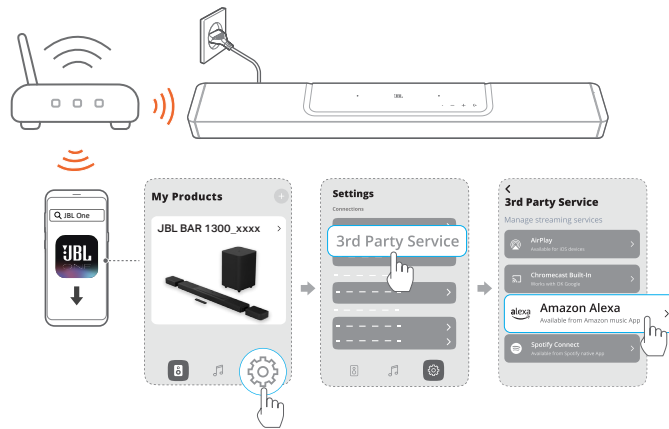
7.9.2 AirPlay



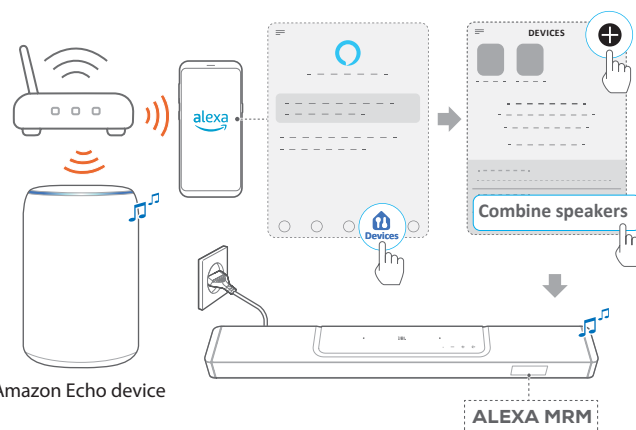
1. On an iOS device, enter the Control Center.
2. Tap  to select multiple connected speakers as needed.
3. Start music streaming from an app.

7.9.3 Alexa MRM: Multi-Room Music

1. Check that you have enabled the streaming service of Amazon Alexa on the soundbar through the JBL One app.



2. Through the Amazon Alexa app, create a Multi-room Music group for the soundbar. Refer to the Amazon Alexa app for more information.



NOTES:

- To create a multi-room music group in the Amazon Alexa app, make sure that you have connected all the devices to the same home network and have used the same Alexa login account. Refer to the Amazon Alexa app for more details.

8. SOUND SETTINGS

8.1 Audio sync

With the audio sync function, you can synchronize audio and video to make sure that no delay is heard from your video content.

1. On the remote control, press and hold **TV** for more than three seconds and then, press **+**.
→ “**SYNC**” is displayed.
2. Within five seconds, press **+** or **-** on the remote control to adjust the audio delay and match with video.
→ The audio sync timing is displayed.


8.2 Smart mode

With the smart mode enabled by default, you can enjoy TV programs with rich sound effects. For TV programs such as news and weather forecasts, you can reduce sound effects by disabling the smart mode and switching to the standard mode.

Smart mode: EQ settings and JBL Surround Sound are applied for rich sound effects.

Standard mode: The preset EQ settings are applied for standard sound effects.

To disable the smart mode, do the following:



- On the remote control, press and hold  for more than three seconds and then, press **+**.
→ You switch to another mode. “**OFF SMART MODE**”: The standard mode is enabled.
→ Next time you switch on the soundbar, the smart mode is **enabled again automatically**.

8.3 PureVoice dialogue enhancement technology

By taking advantage of the PureVoice dialogue enhancement technology, the PureVoice allows you to enhance vocal clarity and easily hear and understand speech.


By default, the PureVoice is enabled if you play movies from the TV/ HDMI IN source; and the PureVoice is disabled if you stream music over Bluetooth, Chromecast built-in, Alexa Cast and AirPlay.

To disable or enable the voice mode,

- On the remote control, press and hold  for more than five seconds and then, press .
→ “**ON PUREVOICE**”: The PureVoice is enabled.
→ “**OFF PUREVOICE**”: The PureVoice is disabled.
→ Next time you switch on the soundbar, the Purevoice is **enabled again automatically**.

9. RESTORE FACTORY SETTINGS

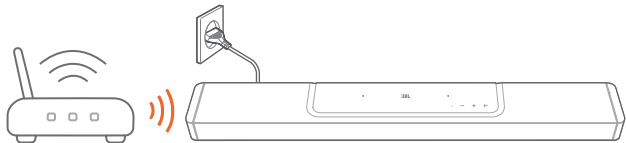
By restoring the default settings defined at factories, you remove all your personalized settings from the soundbar.

- On the soundbar, press and hold , **+** and **-** for more than 5 seconds.
→ “**RESET**” is displayed.
→ The soundbar restarts.

10. SOFTWARE UPDATE

For optimal product performance and your best user experience, JBL may offer software updates for the soundbar system in the future. Please visit www.jbl.com or contact JBL call center to receive more information about downloading update files.

Updating online

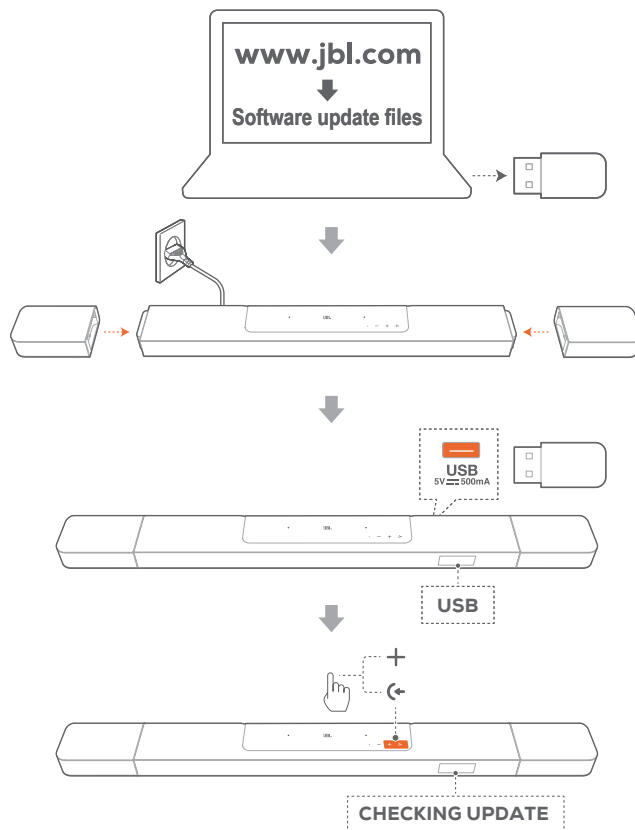


- Connect the soundbar to your home network. Updating online happens automatically if software updates are available.
 - **“WAIT”**: Software updating in progress
 - **“DONE”**: Software updating completed

NOTES:

- Software updates will be synchronized to the two detachable speakers when they are connected to or docked onto the soundbar.

Updating through a USB storage device



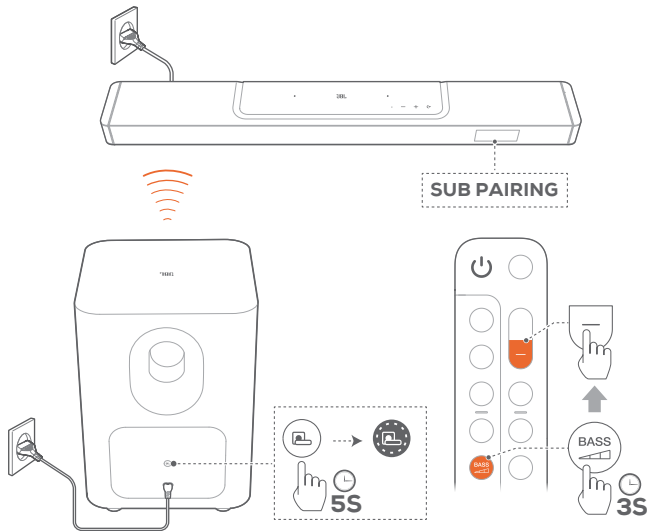
1. Check that you have saved the software update file to the root directory of a USB storage device.
 - Make sure that your USB storage device meets the following requirements:
 - Maximum capacity: 64 GB
 - File system: FAT32
2. Connect the USB device.
 - **“USB”**: The soundbar switches to the USB source.
3. To enter the software update mode, press **←** and **+** on the soundbar.
 - **“CHECKING UPDATE”** is displayed.
 - **“WAIT”**: Software updating in progress
 - **“DONE”**: Software updating completed

NOTES:




- Keep the soundbar powered on and the USB storage device mounted before software updating is complete.

11. RE-CONNECT THE SUBWOOFER


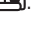
The soundbar and subwoofer are paired at factories. After power-on, they are paired and connected automatically. In some special cases, you may need to pair them again.



To re-enter the subwoofer pairing mode

1. On the rear panel of subwoofer, press and hold  until it turns fast flashing white.
2. To enter the subwoofer pairing mode on the soundbar, press and hold  on the remote control for more than three seconds. Then, press  on the remote control.
 - “SUB PAIRING”: The subwoofer is ready for pairing.
 - “SUB PAIRED”: The subwoofer is connected.

NOTES:

- The subwoofer will exit the pairing mode in three minutes and go to standby, if pairing is not completed.  turns from fast flashing white to off. To return to the pairing mode, press .

12. PRODUCT SPECIFICATIONS

General specification:

- Model: BAR 1300 (soundbar unit)
BAR 1300 SURROUND (detachable speaker)
BAR 1300 SUB (subwoofer unit)
- Sound system: 11.1.4 channel
- Power supply: 100 - 240V AC, ~ 50/60Hz
- Total speaker power output (Max @THD 1%): 1170W
- Soundbar output power (Max @THD 1%): 650W
- Surround speaker output power(Max @THD 1%): 2x 110W
- Subwoofer output power (Max. @THD 1%): 300W
- Soundbar transducer: 6x (46x90)mm racetrack drivers, 5x 0.75” (20mm) tweeters, 4x 2.75” (70mm) up-firing full-range drivers
- Surround speaker transducer: (46x90)mm racetrack driver, 0.75” (20mm) tweeter, 2.75” (70mm) up-firing full-range driver, 2x (48x69mm) rounded rectangle Passive Radiators
- Subwoofer transducer: 10” (260mm)
- Networked standby power: < 2.0 W
- Operating temperature: 0 °C - 45 °C
- Lithium battery: 3.635V, 6600mAh
- Detachable surround speaker playtime: up to 10 Hours (may vary according to content type and volume level)

HDMI specification

- HDMI video input: 3
- HDMI video output (with Enhanced Audio Return Channel, eARC): 1
- HDMI HDCP version: 2.3
- HDR pass through: HDR10, Dolby Vision

Audio specification

- Frequency response: 33Hz - 20kHz (-6dB)
- Audio inputs: 1 Optical, Bluetooth, USB (USB playback is available in US and APAC version. For other versions, USB is for Service only.)

USB specification

- USB port: Type A
- USB rating: 5V DC, 0.5A
- Supporting file formats: mp3
- MP3 codec: MPEG 1 Layer 2/3, MPEG 2 Layer 3, MPEG 2.5 Layer 3
- MP3 sampling rate: 16 - 48 kHz
- MP3 bitrate: 80 - 320 kbps

Wireless specification

- Bluetooth version: Main bar - 5.0, Detachable surround speaker - 5.2
- Bluetooth profile: Main bar - A2DP 1.2 and AVRCP 1.5, Detachable surround speaker - A2DP 1.3 and AVRCP 1.6
- Bluetooth transmitter frequency range: 2400 MHz - 2483.5 MHz
- Bluetooth transmitter power: <15 dBm (EIRP)
- Wi-Fi network: IEEE 802.11 a/b/g/n/ac/ax (2.4GHz/5GHz)

- 2.4G Wi-Fi transmitter frequency range: 2412 - 2472 MHz (2.4 GHz ISM Band, USA 11 Channels, Europe and others 13 Channels)
- 2.4G Wi-Fi transmitter power: <20dBm (EIRP)
- 5G Wi-Fi transmitter frequency range: 5.15 - 5.35GHz, 5.470 - 5.725GHz, 5.725 - 5.825GHz
- 5G Wi-Fi transmitter power: 5.15 - 5.25GHz <23dBm, 5.25 - 5.35GHz & 5.470 - 5.725GHz <20dBm, 5.725 - 5.825GHz <14dBm (EIRP)
- 2.4G wireless transmitter frequency range: 2406 - 2474 MHz
- 2.4G wireless transmitter power: <10 dBm (EIRP)

Dimensions

- Total soundbar dimensions (W x H x D): 1376 x 60 x 139 mm / 54.2" x 2.4" x 5.5"
- Main soundbar dimensions (W x H x D): 1000 x 60 x 139 mm / 39.4" x 2.4" x 5.5"
- Detachable surround speaker dimensions (each) (W x H x D): 202 x 60 x 139 mm / 8" x 2.4" x 5.5"
- Subwoofer dimensions (W x H x D): 305 x 440.4 x 305 mm / 12" x 17.3" x 12"
- Soundbar weight: 4.3kg / 9.5 lbs
- Detachable surround speaker weight (each): 1.17 kg / 2.57 lbs
- Subwoofer weight: 10 kg / 22 lbs
- Packaging dimensions (W x H x D): 381 x 1107 x 477 mm / 15" x 43.6" x 18.8"
- Packaging Weight: 21.45 kg / 47.2 lbs

13. TROUBLESHOOTING

Never try to repair the product yourself. If you have problems using this product, check the following points before you request services.

System

The unit will not turn on.

- Check if the power cord is plugged into power and the soundbar.

The soundbar has no response to button pressing.

- Restore the soundbar to factory settings (See "[9. RESTORE FACTORY SETTINGS](#)").

Sound

No sound from soundbar

- Make sure that the soundbar is not muted.
- Select the correct audio input source on the remote control.
- Connect the soundbar to your TV or other devices properly
- Restore the soundbar to its factory settings by pressing and holding **⏪**, **+** and **⏩** on the soundbar for more than 5 seconds.

Distorted sound or echo

- If you play audio from your TV through the soundbar, make sure that your TV is muted or the built-in TV speaker is disabled.

Audio and video are not synchronized.

- Enable the audio sync function to synchronize audio and video (See "[8.1 Audio sync](#)").

No height sound effects of Dolby Atmos

- If your TV supports HDMI ARC only, make sure that you have connected your digital device to the soundbar through the **HDMI IN** connector on the soundbar (See "[5.1.1 TV \(HDMI ARC / eARC\)](#)")
- Enjoy the sound effects of Dolby Atmos when you play movies from the TV / HDMI source. For audio streaming over Bluetooth or casting apps (enabled by Chromecast built-in, AirPlay or Alexa Cast), Dolby Atmos is not supported.

Bluetooth

A device cannot be connected with the soundbar.

- Check if you have enabled Bluetooth on the device.
- If the soundbar has been paired with another Bluetooth device, reset Bluetooth (see "[5.2.3 To connect to another Bluetooth device](#)").
- If your Bluetooth device has ever been paired with the soundbar, reset Bluetooth on the soundbar, unpair the soundbar on the Bluetooth device, and then, pair the Bluetooth device with the soundbar again (see "[5.2.3 To connect to another Bluetooth device](#)").

Poor audio quality from a connected Bluetooth device

- The Bluetooth reception is poor. Move the source device closer to the soundbar, or remove any obstacle between the source device and the soundbar.

The connected Bluetooth device connects and disconnects constantly.

- The Bluetooth reception is poor. Move the source device closer to the soundbar, or remove any obstacle between the source device and the soundbar.

Wi-Fi

Failed to connect to Wi-Fi.

- Make sure that Wi-Fi is turned on.
- Make sure that you have selected the right network and entered the correct password.
- Make sure that your router or modem is turned on and within the range.
- In your router settings, make sure that you have set the security type to WPA2 or auto.
- Make sure that your soundbar is connected to the same wireless LAN as your smartphone or tablet.
- If you have difficulties in setting up Wi-Fi, hold **+** and **-** on the soundbar until **"SETUP WIFI"** is displayed.

Playback

AirPlay cannot find the soundbar as an AirPlay speaker for music streaming.

- On your Apple device, update the software to the latest version: iOS 13.4 and later, Mac OS 10.15.4 and later, or TV OS 14.3.
- Make sure that your Apple device has been connected to the same network as the soundbar.
- For a PC running iTunes for Windows, you can stream music from your PC to the soundbar through Bluetooth.

Music playback does not work smoothly when the sound source switches from Bluetooth to Chromecast built-in, AirPlay or Alexa Cast.

- The quality of audio casting and playback are dependent on the traffic and coverage of the network that connects the soundbar and your casting devices, such as phones, tablets and PCs.

Music playback does not resume when the sound source switches from Bluetooth to TV/HDMI IN, and then back to Bluetooth.

- The music playback in the Bluetooth device stops when the sound source switches from Bluetooth to TV / HDMI IN. When you switch back to the Bluetooth source, start music playback in the Bluetooth device again.

The soundbar is in the "Offline" status in the Amazon Alexa app or issues happen to Alexa MRM-related playback.

- To recover the soundbar, restore the soundbar to its factory settings by pressing and holding **⏪**, **+** and **-** for more than 5 seconds.

Remote control

The remote control does not work.

- Check if the batteries are drained. If so, replace them with new ones.
- Reduce the distance and angle between the remote control and the main unit.

Failed to complete the TV remote control learning.

- Check if you are using an infra-red TV remote control. The IR learning is not supported by a Bluetooth TV remote control.

Low power standby mode

The soundbar cannot enter the low power standby mode when it completes the power charging of detachable speakers.

- To enter the low power standby mode, press and hold **⏻** on the remote control until "CEC 1" is displayed on the soundbar; then, press and hold **⏻** on the remote control again until "CEC 2" is displayed.
- To exit the low power standby mode, unplug the power cord and then, plug it again.

14. TRADEMARKS



The Bluetooth® word mark and logos are registered trademarks owned by Bluetooth SIG, Inc. and any use of such marks by HARMAN International Industries, Incorporated is under license. Other trademarks and trade names are those of their respective owners.



The terms HDMI, HDMI High-Definition Multimedia Interface, HDMI trade dress and the HDMI Logos are trademarks or registered trademarks of HDMI Licensing Administrator, Inc.



Wi-Fi CERTIFIED 6™ and the Wi-Fi CERTIFIED 6™ Logo are trademarks of Wi-Fi Alliance®.

COMPATIBLE WITH



Dolby, Dolby Vision, Dolby Atmos, and the double-D symbol are registered trademarks of Dolby Laboratories Licensing Corporation. Manufactured under license from Dolby Laboratories. Confidential unpublished works. Copyright © 2012–2021 Dolby Laboratories. All rights reserved.



For DTS patents, see <http://patents.dts.com>. Manufactured under license from DTS, Inc. DTS, DTS:X, and the DTS:X logo are registered trademarks or trademarks of DTS, Inc. in the United States and other countries. © 2021 DTS, Inc. ALL RIGHTS RESERVED.



Google, Android, Chromecast built-in are trademarks of Google LLC. Google Assistant is not available in certain languages or countries.



Use of the Works with Apple badge means that an accessory has been designed to work specifically with the technology identified in the badge and has been certified by the developer to meet Apple performance standards. Apple, and AirPlay are trademarks of Apple Inc., registered in the U.S. and other countries. To control this AirPlay 2-enabled speaker, iOS 13.4 or later is required.



Amazon, Alexa, and all related marks are trademarks of Amazon.com, Inc. or its affiliates.



Use your phone, tablet or computer as a remote control for Spotify. Go to spotify.com/connect to learn how. The Spotify Software is subject to third party licenses found here: <https://www.spotify.com/connect/third-party-licenses>

15. OPEN SOURCE LICENSE NOTICE

This product contains open source software licensed under GPL. For your convenience, the source code and relevant build instruction are also available at https://harman-webpages.s3.amazonaws.com/JBL_BAR_Gen3_package_license_list.htm

Please feel free to contact us at:

Harman Deutschland GmbH

HATT: Open Source, Gregor Krapf-Gunther,
Parkring 3 85748 Garching bei Munchen, Germany

or OpenSourceSupport@Harman.com if you have additional question regarding the open source software in the product.



HARMAN International Industries,
Incorporated 8500 Balboa Boulevard,
Northridge, CA 91329 USA
www.jbl.com

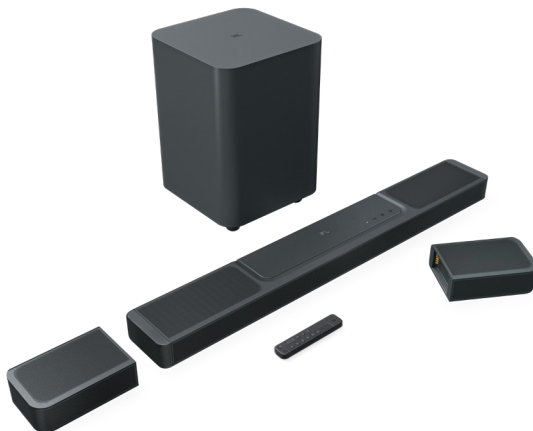
© 2022 HARMAN International Industries, Incorporated.
All rights reserved.

JBL is a trademark of HARMAN International Industries, Incorporated, registered in the United States and/or other countries. Features, specifications and appearance are subject to change without notice.



QUICK START GUIDE

BAR 1300





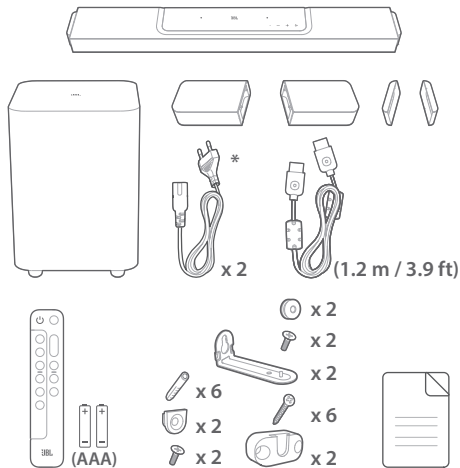


- EN** Before using this product, read the safety sheet carefully.
- FR** Avant d'utiliser ce produit, lisez attentivement la fiche de sécurité.
- DA** Læs sikkerhedsarket omhyggeligt, før du bruger dette produkt.
- DE** Lies vor der Verwendung dieses Produkts das Sicherheitsdatenblatt sorgfältig durch.
- ES** Antes de usar este producto, lee la hoja de seguridad atentamente.
- ES-MX** Antes de usar este producto, lea la hoja de seguridad con atención.
- FI** Lue käyttöturvallisuustiedote huolellisesti ennen tuotteen käyttöä.
- IT** Prima di utilizzare questo prodotto, leggere attentamente la scheda di sicurezza.
- NL** Lees het veiligheidsblad voordat u dit product gebruikt.
- NO** Før du bruker dette produktet, må du lese sikkerhetsbladet nøye.
- PL** Przed użyciem produktu, przeczytaj uważnie arkusz dot. bezpieczeństwa.

- PT** Antes de usar este produto, leia cuidadosamente as instruções de segurança.
- PT-BR** Antes de usar o produto, leia cuidadosamente esta ficha de segurança.
- SK** Pred použitím tohto výrobku si pozorne prečítajte bezpečnostný hárok.
- SV** Läs säkerhetsbladet noggrant innan du använder produkten.
- RU** Перед использованием изделия внимательно прочитайте инструкцию по безопасности.
- ZH-TW** 在使用本產品前，請仔細閱讀安全說明書。
- ID** Sebelum menggunakan produk ini, bacalah lembar panduan keselamatan dengan cermat.
- JP** この製品を使用する前に、安全シートをきちんとお読みください。
- KO** 제품을 사용하기 전에 안전 관련 주의사항을 자세히 읽으십시오.

AR قبل استخدام هذا المنتج، اقرأ صحيفة بيانات السلامة بعناية.
HE לפני השימוש במוצר זה, קרא בעיון את גיליון הבטיחות.





EN * Power cord quantity and plug type vary by regions.

FR * Le nombre de cordons secteur et les types des prises varient selon les régions.

DA * Strømledningens længde og stiktype varierer efter region.

DE * Anzahl und Steckertyp des Netzkabels weichen je nach Region ab.

ES * El número y el tipo de cables de alimentación puede variar según la región.

ES-MX * La cantidad de cables de alimentación y el tipo de enchufe varía según la región.

FI * Virtajohtojen määrä ja liitintätyyppi vaihtelevat alueittain.

IT * Il numero dei cavi di alimentazione e il tipo di spina variano da regione a regione.

NL * Aantal netsnoeren en type stekker is afhankelijk van de regio.

NO * Antall strømkabler og kontakter varierer mellom områder.

PL * Ilość przewodów zasilających i rodzaj wtyczki różnią się w zależności od regionu.

PT * Os cabos de alimentação e o tipo de tomada variam de região para região.

PT-BR * O cabo de alimentação e o tipo de tomada variam de região para região.

SK * Špecifikácia napájacieho kábla a typ zástrčky sa líšia podľa regiónov.

SV * Antalet strömkablar och kontakttyp varierar i olika regioner.

RU * Длина шнура питания и тип вилки зависят от региона.

ZH-TW * 電源線數量及插頭類型因區域而異。

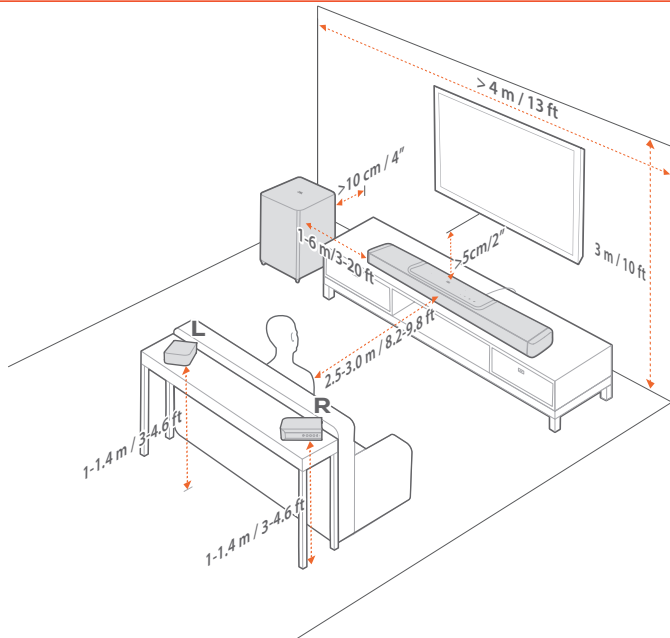
ID * Jumlah kabel daya dan jenis steker berbeda-beda tergantung wilayah.

JP * Power cord quantity and plug type vary by regions.

KO * 전원 코드 수량 및 플러그 유형은 지역별로 다릅니다.

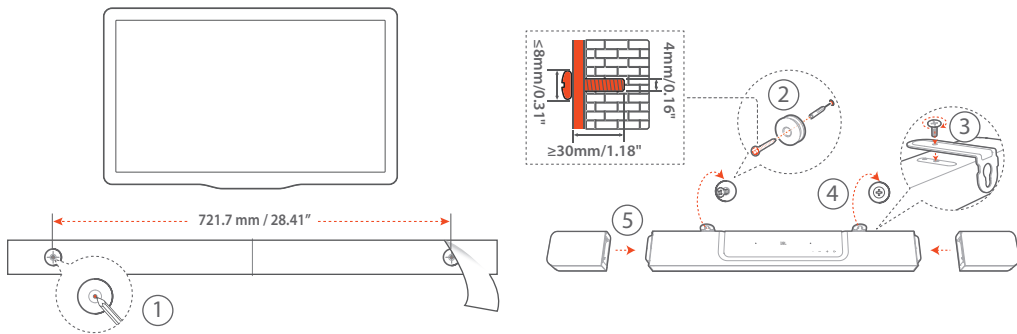
* تختلف كمية كبل الطاقة ونوع القابس حسب المناطق. **AR**

* כמות כבלי החשמל וסוג התקע משתנים בהתאם לאזור. **HE**



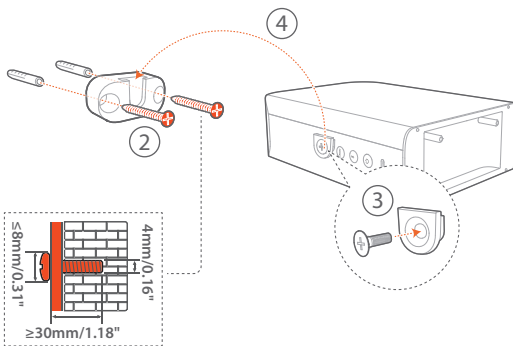


(A)





(B)





- EN** To move the soundbar, first remove the two detachable speakers to avoid accidental damage.
- FR** Pour déplacer la barre de son, retirez d'abord les deux enceintes détachables afin d'éviter tout dommage accidentel.
- DA** Hvis du ønsker at flytte soundbaren, skal du først fjerne de to aftagelige højttalere for at undgå utilsigtede skader.
- DE** Entferne zuerst die beiden abnehmbaren Lautsprecher, um unbeabsichtigte Schäden zu vermeiden, bevor die Soundbar transportiert wird.
- ES** Para cambiar la barra de sonido de lugar, quita primero los dos altavoces desmontables para evitar daños por accidente.
- ES-MX** Para reubicar la barra de sonido, primero retire los dos altavoces desmontables para evitar daños accidentales.
- FI** Vaihtaessasi soundbarin paikkaa, irrota ensin kaksi irrotettavaa kaiutinta välttääksesi mahdolliset vauriot.
- IT** Per spostare la soundbar, innanzitutto rimuovere i due diffusori staccabili per evitare danni accidentali.
- NL** Verwijder eerst de twee afneembare luidsprekers voordat je de soundbar verplaatst, om eventuele schade te voorkomen.
- NO** Du kan flytte lydplanken ved å først fjerne de to avtagbare høyttalerne, for å hindre at de skades.

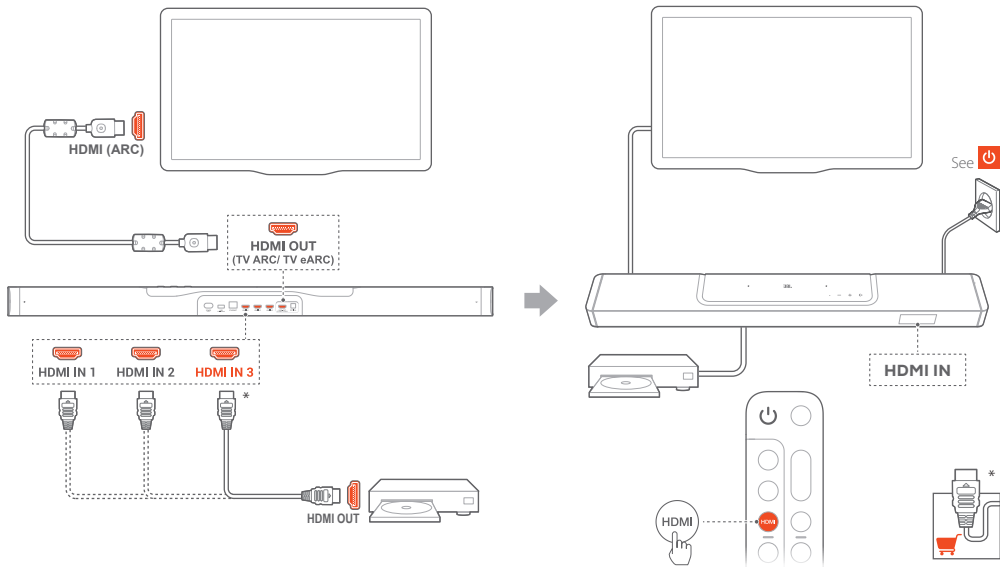
- PL** Aby zmienić lokalizację soundbara, najpierw zdejmij dwa odłączane głośniki w celu uniknięcia przypadkowych uszkodzeń.
- PT** Para transportar a barra de som, remova as duas colunas amovíveis para evitar danos accidentais.
- PT-BR** Antes de mudar a soundbar de lugar, retire as duas caixas de som destacáveis para evitar acidentes que possam danificá-las.
- SK** Ak chcete premiestniť soundbar, najprv odstráňte dva odnímateľné reproduktory, aby ste zabránili náhodnému poškodeniu.
- SV** Om du ska flytta på soundbaren bör du först ta loss de två avtagbara högtalarna för att undvika att något skadas.
- RU** При перемещении звуковой панели сначала отсоедините два съёмных динамика, чтобы избежать их случайного повреждения.
- ZH-TW** 如欲調整條形音箱的位置，請先卸下兩個可拆分喇叭以免發生意外損壞。
- ID** Untuk memindahkan soundbar, hal pertama yang perlu dilakukan adalah mencabut dua speaker yang dapat dilepas untuk menghindari kerusakan yang tidak disengaja.
- JP** サウンドバーを移動する際は、事故による破損を防ぐために、2台の着脱可能スピーカーを取り外してからおこなってください。
- KO** 사운드바 위치를 변경하려면 먼저 탈착식 스피커 두 개를 제거하여 예기치 못한 손상을 방지하십시오.

AR لتغيير مكان العارضة الصوتية، قم أولاً بإزالة السماعتين القابلتين للفصل لتجنب تلفهما دون قصد.

HE כדי להזיז את מקרון הקול, הסר תחילה את שני הרמקולים הנתיקים כדי למנוע נזק מקרי.

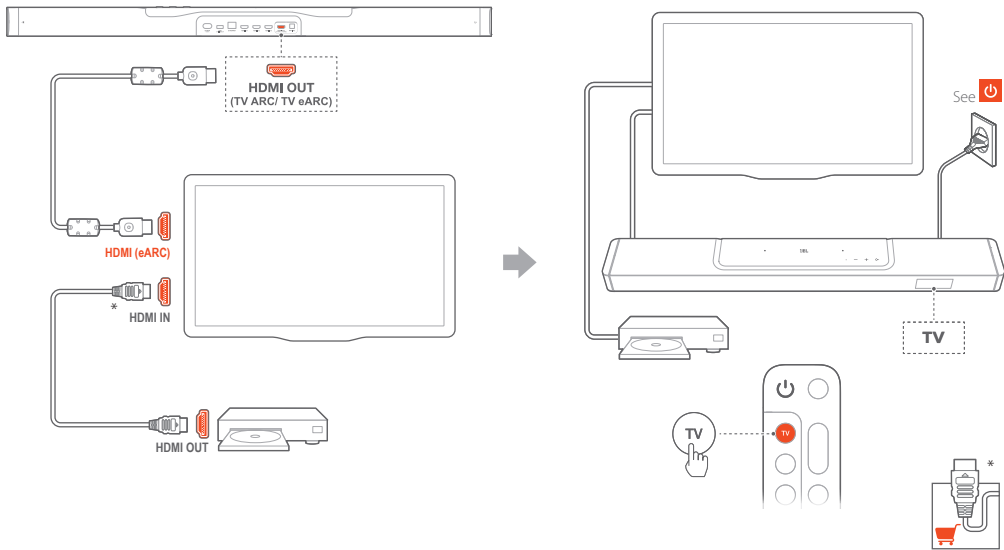


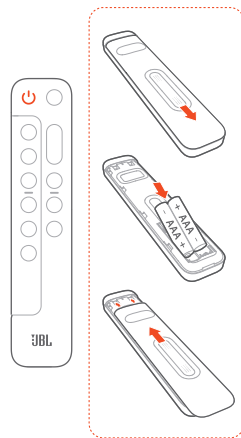
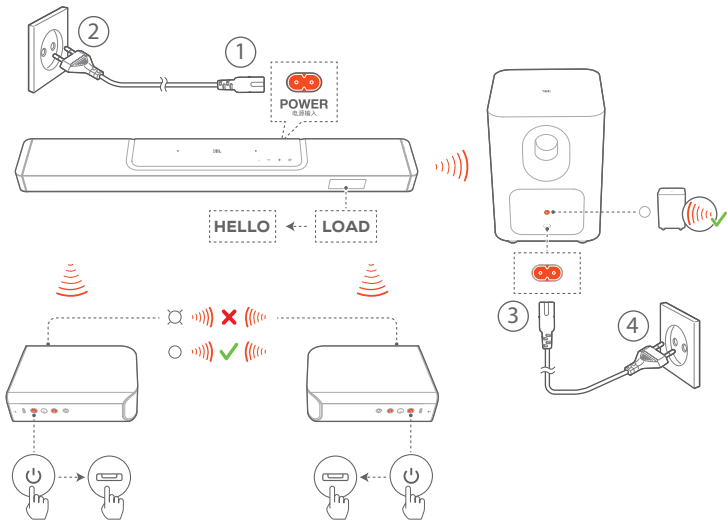
TV (HDMI ARC)





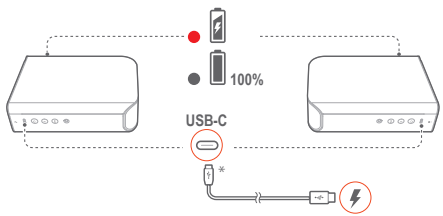
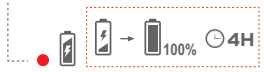
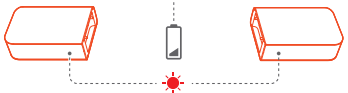
TV (HDMI eARC)







REAR SPKR LOW BATT

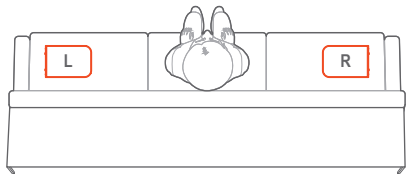
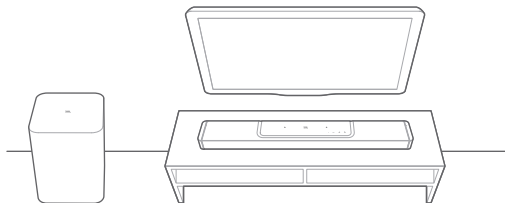




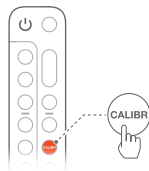
- EN** The soundbar will pair with the two detachable speakers and the subwoofer automatically when they are powered on.
- FR** La barre de son se jumellera automatiquement avec les deux enceintes détachables et le caisson de basses lors de leur allumage.
- DA** Soundbaren kobles automatisk sammen med de to aftagelige højttalere og subwooferen, når de er tændt.
- DE** Die Soundbar wird automatisch mit den zwei abnehmbaren Lautsprechern und dem Subwoofer gekoppelt, wenn diese eingeschaltet werden.
- ES** La barra de sonido se emparejará con los dos altavoces desmontables y el subwoofer automáticamente en cuanto te enciendan.
- ES-MX** La barra de sonido se sincronizará con los dos altavoces desmontables y el altavoz de graves automáticamente al encenderse.
- FI** Soundbar muodostaa kahden irrotettavan kaiuttimen sekä subwooferin kanssa laiteparin automaattisesti, kun ne kytketään päälle.
- IT** La soundbar si abbinerà automaticamente con i due altoparlanti staccabili ed il subwoofer quando sono accesi.
- NL** De soundbar maakt automatisch verbinding met de twee afneembare luidsprekers en de subwoofer wanneer deze worden ingeschakeld.
- NO** Lydplanken vil pare de to løse høyttalerne og basshøyttaleren automatisk når de er slått på.
- PL** Soundbar zostanie automatycznie sparowany z dwoma odłączanymi głośnikami oraz subwooferem po włączeniu ich zasilania.
- PT** A barra de som irá emparelhar automaticamente com os dois altifalantes amovíveis e o subwoofer quando são ligados.
- PT-BR** A soundbar se emparelha automaticamente com as caixas de som destacáveis e o subwoofer quando eles são ligados.
- SK** Soundbar sa po zapnutí automaticky spáruje s dvoma odpojiteľnými reproduktormi a subwooferom.
- SV** Soundbaren kommer att kopplas ihop med de två löstagbara högtalarna och subwoofern automatiskt när de slås på.
- RU** Звуковая панель автоматически установит сопряжение с двумя съёмными колонками и сабвуфером при их включении.
- ZH-TW** 兩個可拆分喇叭及重低音喇叭通電時，條形音箱將自動與它們配對。
- ID** Soundbar akan berpasangan secara otomatis dengan dua speaker yang dapat dilepas dan subwoofer saat ketiganya dihidupkan.
- JP** 通電後、サウンドバーは脱着式リアスピーカー2台およびサブウーファーとのペアリングを自動的に起こします。
- KO** 두 개의 탈착식 스피커와 서브우퍼의 전원이 들어오면 사운드바는 해당 장치와 자동으로 페어링됩니다.
- AR** اضحن السماعتين القابلتين للفصل في الوقت المناسب لضمان وجود طاقة كافية في البطارية.
- HE** מקרן הקול יבצע אוטומטית צימוד עם שני הרמקולים הנתיקים ועם הסאב-וופר בעת ההפעלה.



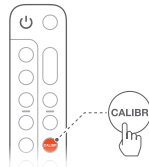
①



1-CALIBRATION



PRESS AGAIN TO CONFIRM

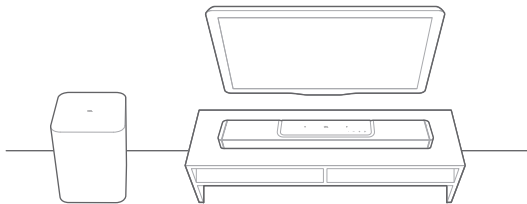


CALIBRATING

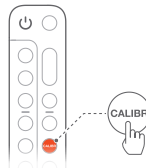
1-DONE



2



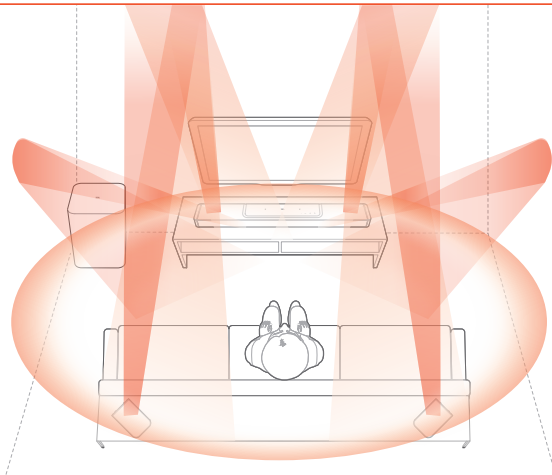
PRESS CALIBR AGAIN



2-CALIBRATION

CALIBRATING

2-DONE



EN **Sound Calibration**

Optimize your 3D surround sound experience for your unique listening environment.

FR **Étalonnage du son**

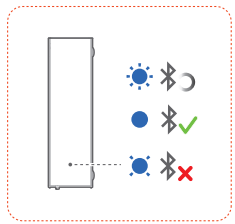
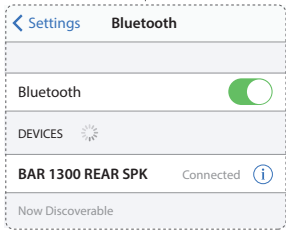
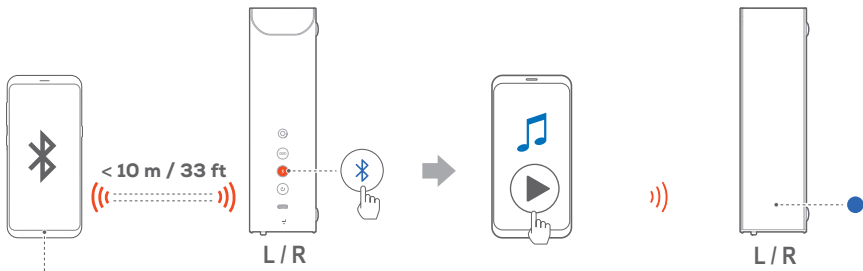
Optimisez votre expérience de son surround 3D dans votre environnement d'écoute spécifique.

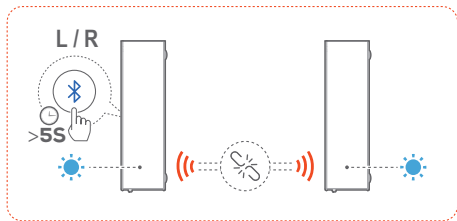
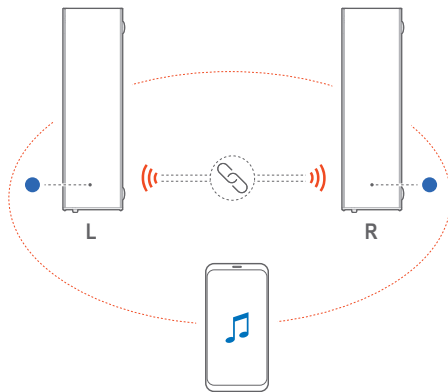
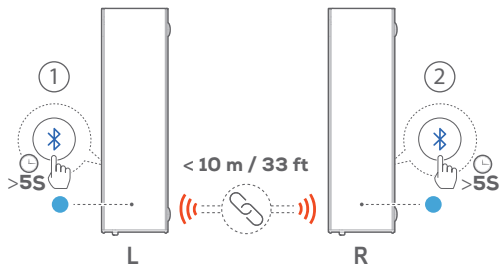
DA **Kalibrering af lyd**

Optimer din 3D-surroundlyd-oplevelse til dit unikke lyttemiljø.

DE **Sound-Kalibrierung**

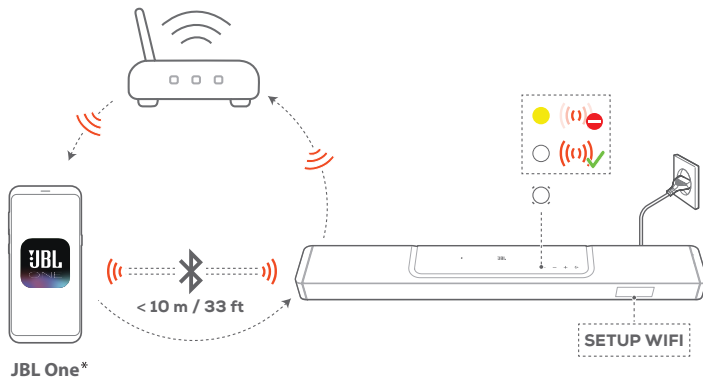
Optimiere das 3D-Surround-Sound-Erlebnis für deine bevorzugte Hörposition.







- EN** By switching to the Bluetooth mode, the detachable speakers can be used as standalone Bluetooth speakers for music playback. By connecting the two detachable speakers, you can set up a stereo music system with L (left) and R (right) channels.
- FR** En sélectionnant le Bluetooth, vous pouvez utiliser les enceintes détachables comme des enceintes Bluetooth indépendantes pour la lecture de musique. En connectant les deux enceintes détachables, vous pouvez configurer un système musical stéréo utilisant les canaux G (gauche) et D (droite).
- DA** Ved at skifte til Bluetooth-tilstand kan de aftagelige højttalere bruges som selvstændige Bluetooth-højttalere til musikafspilning. Ved at tilslutte de to aftagelige højttalere kan du oprette et stereomusiksystem med venstre (V) og højre (H) kanal.
- DE** Durch Wechsel zum Bluetooth-Modus kannst du die abnehmbaren Lautsprecher als eigenständige Bluetooth-Lautsprecher für die Musikwiedergabe verwenden. Wenn die beiden abnehmbaren Lautsprecher verbunden werden, kannst du ein Stereo-Musiksystem mit L- (linkem) und R-Kanal (rechtem) einrichten.
- ES** Al cambiar al modo Bluetooth, los altavoces desmontables se pueden usar como altavoces independientes para la reproducción de música. Al conectar los dos altavoces desmontables, puedes configurar un sistema de música estéreo con los canales L (izquierdo) y R (derecho).
- ES-MX** Al cambiar al modo Bluetooth, los altavoces desmontables pueden utilizarse como altavoces Bluetooth independientes para la reproducción de música. Si conecta los dos altavoces desmontables, puede montar un sistema de música estéreo con los canales L (izquierdo) y R (derecho).
- FI** Siirtymällä Bluetooth-tilaan irrotettavia kaiuttimia voidaan käyttää itsenäisinä Bluetooth-kaiuttimina musiikin toistoon. Kytkemällä kaksi irrotettavaa kaiutinta voit muodostaa stereomusiikkijärjestelmän, jossa on L (vasen) ja R (oikea) kanava.
- IT** Passando alla modalità Bluetooth, gli speaker rimovibili possono essere utilizzati come speaker Bluetooth indipendenti per la riproduzione musicale. Collegando i due speaker rimovibili, è possibile configurare un sistema musicale stereo con i canali L (sinistro) e R (destra).
- NL** Door de Bluetooth-modus in te schakelen, kunnen de afneembare luidsprekers worden gebruikt als zelfstandige Bluetooth-luidsprekers voor het afspelen van muziek. Door de twee afneembare speakers met elkaar te verbinden, kun je een stereo muzieksysteem opstellen met L (linker) en R (rechter) kanalen.
- NO** Ved å bytte til Bluetooth-modus kan de avtagbare høyttalere brukes som enkeltstående Bluetooth-høyttalere for musikkavspilling. Ved å koble til de to avtagbare høyttalere kan du sette opp et stereomusikksystem med L- (venstre) og H- (høyre) kanaler.
- PL** Po przełączeniu w tryb Bluetooth odłączone głośniki mogą być używane jako autonomiczne głośniki Bluetooth do odtwarzania muzyki. Podłączając dwa odłączone głośniki, można skonfigurować system muzyki stereo z kanałem lewym (L) i prawym (R).
- PT** Ao mudar para o modo Bluetooth, as colunas removíveis podem ser utilizadas como colunas Bluetooth independentes para reprodução de música. Ao ligar as duas colunas removíveis, pode configurar um sistema de música estéreo com canais L (esquerda) e R (direita).



EN On an Android™ or iOS device, add the soundbar to your home Wi-Fi network through the JBL One app. Follow the app instructions to complete setup.

* Some features require subscriptions or services not available in all countries.

FR Sur un appareil Android™ ou iOS, ajoutez la barre de son au réseau Wi-Fi de votre domicile via l'application JBL One. Suivez les instructions de l'application pour terminer la configuration.

* Certaines fonctionnalités nécessitent des abonnements ou des services non disponibles dans tous les pays.

EN

General specification:

- Model: BAR 1300 (soundbar unit)
BAR 1300 SURROUND (detachable speaker)
BAR 1300 SUB (subwoofer unit)
- Sound system: 11.1.4 channel
- Power supply: 100 - 240V AC, ~ 50/60Hz
- Total speaker power output
(Max @THD 1%): 1170W
- Soundbar output power (Max @THD 1%): 650W
- Surround speaker output power
(Max @THD 1%): 2x 110W
- Subwoofer output power
(Max @THD 1%): 300 W
- Soundbar transducer: 6x (46x90)mm
racetrack drivers, 5x 0.75" (20mm) tweeters,
4x 2.75" (70mm) up-firing full-range drivers
- Surround speaker transducer: (46x90)mm
racetrack driver, 0.75" (20mm) tweeter,
2.75" (70mm) up-firing full-range driver,
2x (48x69mm) rounded rectangle Passive Radiators
- Subwoofer transducer: 10" (260mm)
- Networked standby power: < 2.0 W
- Operating temperature: 0 °C - 45 °C
- Lithium battery: 3.635V, 6600mAh
- Detachable surround speaker playtime: up
to 10 Hours (may vary according to content
type and volume level)

HDMI specification

- HDMI video input: 3
- HDMI video output (with Enhanced Audio
Return Channel, eARC): 2
- HDMI HDCP version: 2.3
- HDR pass through: HDR10, Dolby Vision

Audio specification

- Frequency response: 33Hz - 20kHz (-6dB)
- Audio inputs: 1 Optical, Bluetooth and USB
(USB playback is available in US version. For
other versions, USB is for Service only.)

USB specification

- USB port: Type A
- USB rating: 5V DC, 0.5A
- Supporting file formats: mp3
- MP3 codec: MPEG 1 Layer 2/3,
MPEG 2 Layer 3, MPEG 2.5 Layer 3

- MP3 sampling rate: 16 - 48 kHz
- MP3 bitrate: 80 - 320 kbps

Wireless specification

- Bluetooth version: Main bar - 5.0,
Detachabe surround speaker - 5.2
- Bluetooth profile: Main bar - A2DP 1.2 and
AVRCP 1.5, Detachable surround speaker -
A2DP 1.3 and AVRCP 1.6
- Bluetooth transmitter frequency range:
2400 MHz - 2483.5 MHz
- Bluetooth transmitter power: <15 dBm (EIRP)
- Wi-Fi network: IEEE 802.11 a/b/g/n/ac/ax
(2.4GHz/5GHz)
- 2.4G Wi-Fi transmitter frequency range:
2412 - 2472 MHz (2.4 GHz ISM Band, USA 11
Channels, Europe and others 13 Channels)
- 2.4G Wi-Fi transmitter power: <20 dBm (EIRP)
- 5G Wi-Fi transmitter frequency range:
5.15 - 5.35GHz, 5.470 - 5.725GHz,
5.725 - 5.825GHz
- 5G Wi-Fi transmitter power: 5.15 - 5.25GHz
<23dBm, 5.25 - 5.35GHz & 5.470 - 5.725GHz
<20dBm, 5.725 - 5.825GHz <14dBm (EIRP)
- 2.4G wireless transmitter frequency range:
2406 - 2474MHz
- 2.4G wireless transmitter power:
<10dBm (EIRP)

Dimensions

- Total soundbar dimensions (W x H x D):
1376 x 60 x 139 mm / 54.2" x 2.4" x 5.5"
- Main soundbar dimensions (W x H x D):
1000 x 60 x 139 mm / 39.4" x 2.4" x 5.5"
- Detachable surround speaker
dimensions (each) (W x H x D):
202 x 60 x 139 mm / 8" x 2.4" x 5.5"
- Subwoofer dimensions (W x H x D):
305 x 440.4 x 305 mm / 12" x 17.3" x 12"
- Soundbar weight: 4.3kg / 9.5 lbs
- Detachable surround speaker weight (each):
1.17 kg / 2.57 lbs
- Subwoofer weight: 10 kg / 22 lbs
- Packaging dimensions (W x H x D):
381 x 1107 x 477 mm / 15" x 43.6" x 18.8"
- Packaging Weight: 21.45 kg / 47.2 lbs

FR

Caractéristiques générales

- Modèle : BAR 1300 (unité barre de son)
BAR 1300 SURROUND (enceinte détachable)
BAR 1300 SUB (unité caisson de basses)
- Système audio : 11.1.4 canaux
- Alimentation électrique : 100 - 240 V CA,
~ 50/60 Hz
- Puissance de sortie totale des enceintes
(max. à 1 % DHT) : 1170 W
- Puissance de sortie de la barre de son (max
à 1 % DHT) : 650 W
- Puissance de sortie des enceintes surround
(max. à 1 % DHT) : 2 x 110 W
- Puissance de sortie du caisson de basses
(max. à 1 % DHT) : 300 W
- Haut-parleurs de la barre de son : 6 haut-
parleurs oblongs (46x90 mm), 5 tweeters de
20 mm (0,75"), 4 haut-parleurs pleine gamme
orientés vers le haut de 70 mm (2,75")
- Haut-parleurs de l'enceinte surround : Haut-
parleur oblong (46x90 mm), tweeters de 20 mm
(0,75"), haut-parleurs pleine gamme orientés
vers le haut de 70 mm (2,75"), 2 radiateurs
passifs rectangulaires arrondis (48x69 mm)
- Haut-parleur du caisson de basses : 260 mm (10")
- Consommation en veille réseau : < 2,0 W
- Température de fonctionnement : 0 °C - 45 °C
- Batterie lithium : 3,635 V, 6600 mAh
- Autonomie de l'enceinte surround amovible :
jusqu'à 10 heures (peut varier en fonction du
type de contenu et du niveau de volume)

Spécification HDMI

- Entrée vidéo HDMI : 3
- Sortie vidéo HDMI (avec canal de retour
audio amélioré (eARC, Enhanced Audio
Return Channel)) : 1
- Version HDCP HDMI : 2.3
- Transfert HDR : HDR10, Dolby Vision

Spécifications audio

- Réponse en fréquence : 33 Hz - 20 kHz (-6 dB)
- Entrées audio : 1 optique, Bluetooth, USB (la
lecture USB est disponible sur la version US, Sur
les autres versions, l'USB est réservé au service.)

Spécification USB

- Prise USB : Type A
- Caractéristiques USB : 5V CC, 0,5A
- Formats de fichiers supportés : mp3

- Codec MP3 : MPEG 1 Layer 2/3, MPEG 2
Layer 3, MPEG 2.5 Layer 3
- Taux d'échantillonnage MP3 : 16 - 48 kHz
- Débit de bits MP3 : 80 - 320 kbit/s

Spécifications radio

- Version du Bluetooth : Barre principale - 5.0,
enceinte surround détachable - 5.2
- Profils Bluetooth : Barre principale - A2DP 1.2
et AVRCP 1.5, enceinte surround détachable -
A2DP 1.3 et AVRCP 1.6
- Bande de fréquences de l'émetteur
Bluetooth : 2400 MHz - 2483,5 MHz
- Puissance de l'émetteur Bluetooth :
< 15 dBm (PIRE)
- Réseau Wi-Fi : IEEE 802.11 a/b/g/n/ac/ax
(2,4 GHz / 5 GHz)
- Plage de fréquences de l'émetteur Wi-Fi 2.4G :
2412 - 2472 MHz (bande ISM 2,4 GHz, USA 11
canaux, Europe et autres 13 canaux)
- Puissance de l'émetteur Wi-Fi 2.4G : < 20 dBm (PIRE)
- Plage de fréquences de l'émetteur Wi-Fi 5G :
5,15 - 5,35 GHz, 5,470 - 5,725 GHz, 5,725 - 5,825 GHz
- Puissance de l'émetteur Wi-Fi 5G :
5,15 - 5,25 GHz < 23 dBm,
5,25 - 5,35 GHz et 5,470 - 5,725 GHz < 20 dBm,
5,725 - 5,825 GHz < 14 dBm (PIRE)
- Plage de fréquences de l'émetteur radio
2.4G : 2406 - 2474 MHz
- Puissance de l'émetteur radio 2.4G :
< 10 dBm (PIRE)

Dimensions

- Dimensions hors-tout de la barre de son (L x
H x P) : 1376 x 60 x 139 mm / 54.2" x 2.4" x 5.5"
- Dimensions de la barre de son principale (L x
H x P) : 1000 x 60 x 139 mm / 39.4" x 2.4" x 5.5"
- Dimensions des enceintes surround
amovibles (chacune) (L x H x P) :
202 x 60 x 139 mm / 8" x 2.4" x 5.5"
- Dimensions du caisson de basses (L x H x P) :
305 x 440.4 x 305 mm / 12" x 17.3" x 12"
- Poids de la barre de son : 4.3 kg / 9.5 lbs
- Poids des enceintes surround amovibles
(chacune) : 1,17 kg / 2,57 lbs
- Poids du caisson de basses : 10 kg / 22 lbs
- Dimensions de l'emballage (L x H x P) :
381 x 1107 x 477 mm / 15" x 43.6" x 18.8"
- Poids emballé : 21,45 kg / 47,2 lbs

EN

1. Information on power consumption

This equipment complies with European Commission Regulation (EC) No 1275/2008 and (EU) No 801/2013.

- Off: N/A
- Standby (when all wireless connections are deactivated): < 0.5 W
- Networked standby for Soundbar: < 2.0 W

2. The period of time after which the power management function switches the equipment automatically into:

Off	N/A	
Standby	When all wired ports are disconnected and all wireless network connections are deactivated	Switched to standby mode after 10 minutes.
Networked standby	When any wireless network connection is activated	Switched to networked standby mode after 10 minutes of inactivity in operational mode

3. If this equipment has the wireless network connections:

How to activate wireless network connections:

- Set up the equipment properly;
- Switch into wireless mode (Bluetooth, Chromecast built-in™, AirPlay 2 casting audio, Alexa Multi-Room Music & etc);
- Connect with energy using products (e.g. players/ game consoles/ STB (Set-Top Boxes)/ phones/ tablets /PCs).

How to deactivate wireless network connections:

- Press and hold  on the remote control for more than 5 seconds firstly;
- Then long press  on the remote control for more than 5 seconds.

FR

1. Informations sur la consommation électrique

L'équipement est conforme au règlement de la Commission européenne (CE) n° 1275/2008 et (UE) n° 801/2013.

- Off : S. O.
- Veille (lorsque toutes les connexions sans fil sont désactivées) : < 0,5 W
- Veille en réseau pour la barre de son : < 2,0 W

2. La durée après laquelle la fonction de gestion de l'énergie commute automatiquement l'équipement dans l'état :

Éteint	S. O.	
Veille	Lorsque tous les ports câblés sont déconnectés et que toutes les connexions réseau sans fil sont désactivées.	Mise en veille après 10 minutes.



Veille en réseau	Lorsqu'une connexion réseau sans fil est activée.	Passage en veille en réseau après 10 minutes d'inactivité en état opérationnel.
------------------	---	---

3. Si cet équipement a des connexions réseau sans fil :

Activation des connexions réseau sans fil :

- Installez l'équipement correctement ;
- Sélectionnez un mode sans fil (Bluetooth, Chromecast built-in™, diffusion audio AirPlay 2, Alexa MultiRoom Musique et autres) ;
- Connectez-vous avec les produits consommateurs d'énergie (par ex. lecteurs / consoles de jeux / récepteurs/décodeurs / téléphones / tablettes / PCs).

Désactivation des connexions réseau sans fil :

- Appuyez d'abord pendant plus de 5 secondes sur  de la télécommande ;
- Appuyez ensuite pendant plus de 5 secondes sur  de la télécommande.

DA

1. Oplysninger om strømforbrug

Dette udstyr er i overensstemmelse med Europa-Kommissionens forordning (EF) nr.1275/2008 og (EU) Nr. 801/2013.

- Slukket: Ikke relevant
- Standby (når alle trådløse forbindelser er deaktiveret): < 0,5 W
- Netværksstandby for Soundbar: < 2,0 W

2. Den periode, hvorefter strømstyringsfunktionen automatisk skifter udstyret til:


Slukket	Ikke relevant	
Standby	Når alle kabelforbundne porte er frakoblet, og alle trådløse netværksforbindelser er deaktiveret	Skiftede til standby efter 10 minutter.
Netværksstandby	Når enhver trådløs netværksforbindelse er aktiveret	Skiftede til netværksstandbytilstand efter 10 minutters inaktivitet i driftstilstand

3. Hvis dette udstyr har de trådløse netværksforbindelser:

Sådan aktiveres trådløse netværksforbindelser:

- Sæt udstyret korrekt op.
- Skift til trådløs tilstand (Bluetooth, Chromecast built-in™, AirPlay 2 casting audio, Alexa Multi-Room Music & etc);
- Opret forbindelse til energiforbrugende produkter (fx afspillere / spillkonsoller / tv-bokse / telefoner / tablets / pc'er).



Sådan deaktiveres trådløse netværksforbindelser:

- Tryk og hold  på fjernbetjeningen i mere end 5 sekunder først;
- Hold derefter  inde på fjernbetjeningen i mere end 5 sekunder.

FCC RF Radiation Exposure Statement Caution: To maintain compliance with the FCC's RF exposure guidelines, place the product at least 20cm from nearby persons.

Cet équipement est conforme aux limites d'exposition aux radiations FCC/ IC CNR-102 établies pour un environnement non contrôlé. Cet équipement doit être installé et utilisé avec une distance minimale de 20 cm entre le radiateur et votre corps.

Use Restriction: This device is restricted to indoor use when operating in the 5150 to 5350 MHz frequency range in following countries:

	BE	EL	LT	PT	
	BG	ES	LU	RO	
	CZ	FR	HU	SI	
	DK	HR	MT	SK	UK
	DE	IT	NL	FI	
	EE	CY	AT	SE	
	IE	LV	PL	UK(NI)	

Belgium (BE), Greece (EL), Lithuania (LT), Portugal (PT), Bulgaria (BG), Spain (ES), Luxembourg (LU), Romania (RO), Czech Republic (CZ), France (FR), Hungary (HU), Slovenia (SI), Denmark (DK), Croatia (HR), Malta (MT), Slovakia (SK), Germany (DE), Italy (IT), Netherlands (NL), Finland (FI), Estonia (EE), Cyprus (CY), Austria (AT), Sweden (SE), Ireland (IE), Latvia (LV), Poland (PL), United Kingdom (UK) and Northern Ireland (UK (NI)).

This product contains open source software licensed under GPL. For your convenience, the source code and relevant build instruction are also available at https://harman-webpages.s3.amazonaws.com/JBL_BAR_Gen3_package_license_list.htm

Please feel free to contact us at:

Harman Deutschland GmbH

ATT: Open Source, Gregor Krapf-Gunther, Parking 3

85748 Garching bei Munchen, Germany

or OpenSourceSupport@Harman.com if you have additional question regarding the open source software in the product.



The Bluetooth® word mark and logos are registered trademarks owned by Bluetooth SIG, Inc. and any use of such marks by HARMAN International Industries, Incorporated is under license. Other trademarks and trade names are those of their respective owners.



The terms HDMI, HDMI High-Definition Multimedia Interface, HDMI trade dress and the HDMI Logos are trademarks or registered trademarks of HDMI Licensing Administrator, Inc.



Wi-Fi CERTIFIED 6™ and the Wi-Fi CERTIFIED 6™ Logo are trademarks of Wi-Fi Alliance®.

COMPATIBLE WITH



Dolby, Dolby Vision, Dolby Atmos, and the double-D symbol are registered trademarks of Dolby Laboratories Licensing Corporation. Manufactured under license from Dolby Laboratories. Confidential unpublished works. Copyright © 2012–2021 Dolby Laboratories. All rights reserved.



For DTS patents, see <http://patents.dts.com>. Manufactured under license from DTS, Inc. DTS, DTS:X, and the DTS:X logo are registered trademarks or trademarks of DTS, Inc. in the United States and other countries. © 2021 DTS, Inc. ALL RIGHTS RESERVED.



Google, Android, Chromecast built-in are trademarks of Google LLC. Google Assistant is not available in certain languages or countries.



Use of the Works with Apple badge means that an accessory has been designed to work specifically with the technology identified in the badge and has been certified by the developer to meet Apple performance standards. Apple, and AirPlay are trademarks of Apple Inc., registered in the U.S. and other countries.

To control this AirPlay 2-enabled speaker, iOS 13.4 or later is required.



Amazon, Alexa, and all related marks are trademarks of Amazon.com, Inc. or its affiliates.



Use your phone, tablet or computer as a remote control for Spotify. Go to spotify.com/connect to learn how.

The Spotify Software is subject to third party licenses found here: <https://www.spotify.com/connect/third-party-licenses>.

English (en)

EU DECLARATION OF CONFORMITY

1. Model No., trademark:

BAR 1300, BAR 1300 SURROUND, BAR 1300 SUB

JBL

2. Name and address of the manufacturer's authorised representative:

Harman International Industries, Incorporated

EMEA Liaison Office, Danzigerkade 16G,1013 AP Amsterdam, The Netherlands

3. This declaration of conformity is issued under the sole responsibility of the manufacturer:

Harman International Industries, Incorporated

8500 Balboa Blvd, Northridge, CA 91329, UNITED STATES

4. Object of the declaration:

Multi-Channel Soundbar with wireless subwoofer

5. The object of the declaration described above is in conformity with the relevant Union harmonisation legislation directive and Other Union harmonisation legislation where applicable:

RED - 2014/53/EU, ERP - 2009/125/EC,

RoHS - (EU) 2015/863 amending Annex II to 2011/65/EU,

6. References to the relevant harmonised standards used or references to the other technical specifications in relation to which conformity is declared. References must be listed with their identification number and version and, where applicable, date of issue:

EN 55032:2015, EN 55032:2015/A11:2020, EN 55035:2017, EN 55035:2017/A11:2020

EN IEC 62311:2020, EN 62368-1:2014+A11:2017, EN 61000-3-3:2013/A2:2021, EN IEC 61000-3-2:2019/A1:2021

EN 300 328 V2.2.2, EN 301 893 V2.1.1, EN 300 440 V2.2.1, ETSI EN 301 489-1 V2.2.3, ETSI EN 301 489-17 V3.2.4 (EC) No 1275/2008 & (EU) No 801/2013, EN 50564:2011, EN IEC 63000:2018

7. Where applicable, the notified body ... (name, number) ... performed ... (description of intervention) And issued the EU-type examination certificate: ...

-

8. Where applicable, description of accessories and components, including software, which allow the radio equipment to operate as intended and covered by the EU declaration of conformity:

EPS: Model:

9. Additional information:

(Signature):



(Name, Function):

Clarice Chen Sr. Manager, Product Compliance & Sustainability

Signed for and on behalf of:

Harman International Industries, Incorporated

(Place and date of issue):

Shenzhen, China. 2022-10-18