




PARTYBOX ULTIMATE





OWNER'S MANUAL

IMPORTANT SAFETY INSTRUCTIONS

For all products:

1. Read these instructions.
2. Keep these instructions.
3. Heed all warnings.
4. Follow all instructions.
5. Do not block any ventilation openings. Install this apparatus in accordance with the manufacturer's instructions.
6. Do not install this apparatus near any heat sources such as radiators, heat registers, stoves or other apparatus (including amplifiers) that produce heat.
7. Do not defeat the safety purpose of the polarized or grounding-type plug. A polarized plug has two blades with one wider than the other. A grounding-type plug has two blades and a third grounding prong. The wide blade or the third prong is provided for your safety. If the provided plug does not fit into your outlet, consult an electrician for replacement of the obsolete outlet.
8. Protect the power cord from being walked on or pinched, particularly at plugs, convenience receptacles and the point where they exit from the apparatus.
9. Use only attachments/accessories specified by the manufacturer.
10. Use only with the cart, stand, tripod, bracket or table specified by the manufacturer or sold with the apparatus. When a cart is used, use caution when moving the cart/apparatus combination to avoid injury from tip-over. 
11. Unplug this apparatus during lightning storms or when unused for long periods of time.
12. To disconnect this apparatus from the AC mains completely, disconnect the power-supply cord plug from the AC receptacle.
13. The mains plug of the power-supply cord shall remain readily operable.
14. This apparatus is intended to be used only with the power supply and/or charging cable provided by the manufacturer.

CAUTION	
RISK OF ELECTRIC SHOCK. DO NOT OPEN.	
	THE LIGHTNING FLASH WITH AN ARROWHEAD SYMBOL, WITHIN AN EQUILATERAL TRIANGLE, IS INTENDED TO ALERT THE USER TO THE PRESENCE OF UNINSULATED "DANGEROUS VOLTAGE" WITHIN THE PRODUCT'S ENCLOSURE THAT MAY BE OF SUFFICIENT MAGNITUDE TO CONSTITUTE A RISK OF ELECTRIC SHOCK TO PERSONS.
	THE EXCLAMATION POINT WITHIN AN EQUILATERAL TRIANGLE IS INTENDED TO ALERT THE USER TO THE PRESENCE OF IMPORTANT OPERATING AND MAINTENANCE (SERVICING) INSTRUCTIONS IN THE LITERATURE ACCOMPANYING THE PRODUCT.
WARNING: TO REDUCE THE RISK OF FIRE OR ELECTRIC SHOCK, DO NOT EXPOSE THIS APPARATUS TO RAIN OR MOISTURE.	

Caution FCC and IC statement for users (USA and Canada only)

This device complies with part 15 of the FCC Rules. Operation is subject to the following two conditions: (1) This device may not cause harmful interference, and (2) this device must accept

any interference received, including interference that may cause undesired operation.

CAN ICES-3(B)/NMB-3(B)

Federal Communication Commission Interference Statement

This equipment has been tested and found to comply with the limits for a Class B digital device, pursuant to Part 15 of the FCC Rules. These limits are designed to provide reasonable protection against harmful interference in a residential installation. This equipment generates, uses and can radiate radio frequency energy and, if not installed and used in accordance with the instructions, may cause harmful interference to radio communications. However, there is no guarantee that interference will not occur in a particular installation. If this equipment does cause harmful interference to radio or television reception, which can be determined by turning the equipment off and on, the user is encouraged to try to correct the interference by one or more of the following measures:

- Reorient or relocate the receiving antenna.
- Increase the separation between the equipment and receiver.
- Connect the equipment into an outlet on a circuit different from that to which the receiver is connected.
- Consult the dealer or an experienced radio/TV technician for help.

Caution: Changes or modifications not expressly approved by HARMAN could void the user's authority to operate the equipment.

For Products That Transmit RF Energy

FCC AND IC INFORMATION FOR USERS

This device complies with Part 15 of the FCC rules and Industry Canada license-exempt RSS standard(s). Operation is subject to the following two conditions: (1) This device may not cause harmful interference; and (2) this device must accept any interference received, including interference that may cause undesired operation.

FCC/IC Radiation Exposure Statement

This equipment complies with FCC/IC RSS-102 radiation exposure limits set forth for an uncontrolled environment.

FCC Caution:

High power radars are allocated as primary users of the 5.25 to 5.35 GHz and 5.65 to 5.85 GHz bands. These radar stations can cause interference with and/or damage this device. No configuration controls are provided for this wireless equipment allowing any change in the frequency of operations outside the FCC grant of authorization for US operation according to Part 15.407 of the FCC rules.

IC Caution:

User should also be advised that:

- (i) The device for operation in the band 5150-5250 MHz is only for indoor use to reduce the potential for harmful interference to co-channel mobile satellite systems;
- (ii) the maximum antenna gain permitted for devices in the bands 5250-5350 MHz and 5470-5725 MHz shall comply with the e.i.r.p. Limit; and
- (iii) The maximum antenna gain permitted for devices in the band 5725-5825 MHz shall comply with the e.i.r.p. Limits specified for

point-to-point and non-point-to-point operation as appropriate. (iv) Users should also be advised that high-power radars are allocated as primary users (i.e. priority users) of the bands 5250-5350 MHz and 5650-5850 MHz and that these radars could cause interference and/or damage to LE-LAN devices.

Exposure of humans to RF fields (RSS-102)

The computers employ low gain integral antennas that do not emit RF field in excess of Health Canada limits for the general population; consult Safety Code 6, obtainable from Health Canada's Website at <http://www.hc-sc.gc.ca/>

The radiated energy from the antennas connected to the wireless adapters conforms to the IC limit of the RF exposure requirement regarding IC RSS-102, Issue 5 clause 4. SAR tests are conducted using recommended operating positions accepted by the FCC/RSS with the device transmitting at its highest away from the body. Non-compliance with the above restrictions may result in a violation of FCC RF exposure guidelines.

Use Restriction: Attention in France, the operation is limited to indoor use within the band 5150-5350 MHz.

For Products with Radio Receivers That Can Use an External Antenna (USA ONLY)

CATV (Cable TV) or Antenna Grounding

If an outside antenna or cable system is connected to this product, be certain that it is grounded so as to provide some protection against voltage surges and static charges. Section 810 of the National Electrical Code (NEC), ANSI/NFPA No. 700-1984, provides information with respect to proper grounding of the mast and supporting structure, grounding of the lead-in wire to an antenna discharge unit, of grounding conductors, location of antenna discharge unit, connection to grounding electrodes and requirements of the electrode.

Note to CATV System Installer

This reminder is provided to call the CATV(cable TV) system installer's attention to article 820-40 of the NEC, which provides guidelines for proper grounding and, in particular, as close to the point of cable entry as possible.

FOR ALL EU COUNTRIES

For products that include audio out

Prevention of hearing loss



CAUTION: Permanent hearing loss may occur if earphones or headphones are used at high volume for prolonged periods of time.

For France, the products have been tested to comply with Sound Pressure Level requirement laid down in the applicable NF EN 50332 L.5232-1.

NOTE:

- To prevent possible hearing damage, do not listen to high volume levels for long periods.

WEEE Notice

The Directive on Waste Electrical Equipment (WEEE), which entered into force as European law on 14/02/2014, resulted in a major change in the treatment of electrical equipment at end-of-life.

The purpose of this Directive is, a first priority, the prevention of WEEE, and in addition, to promote the reuse, recycling and other forms of recovery of such wastes as so as to reduce disposal.

The WEEE logo on the product or on its box indicating collection for electrical and electronic equipment consists of the crossed-out wheeled bin, as shown below.



This product must not be disposed of or dumped with your other household waste. You are liable to dispose of all your electronic or electrical waste equipment by relocating over to the specified collection point for recycling of such hazardous waste. Isolated collection and proper recovery of your electronic and electrical waste equipment at the time of disposal will allow us to help conserving natural resources. Moreover, proper recycling, and collection points, please contact your local city center, household waste disposal service, shop from where you purchased the equipment, or manufacturer of the equipment.

RoHS Compliance

This product is in compliance with Directive 2011/65/EU of the European Parliament and of the Council of 8 June 2011 on the restriction of the use of certain hazardous substances in electrical and electronic equipment.

For All Products Except Those with Wireless Operation

HARMAN International hereby declares that this equipment is in compliance with EMC 2014/30/EU Directive, LVD 2014/35/EU Directive. The declaration of conformity may be consulted in the support section of our Web Site, accessible from www.jbl.com.

For All Products with Wireless Operation

HARMAN International hereby declares that this equipment is in compliance with the essential requirements and other relevant provisions of Directive 2014/53/EU. The declaration of conformity may be consulted in the support section of our Web Site, accessible from www.jbl.com.

EPILEPSY WARNING

A few people may experience epileptic seizures when viewing flashing lights.

TABLE OF CONTENTS

IMPORTANT SAFETY INSTRUCTIONS	2	9. SPECIFICATIONS	16
1. INTRODUCTION	5	10. TROUBLESHOOTING	16
2. WHAT'S IN THE BOX	5	11. COMPLIANCE	17
3. PRODUCT OVERVIEW	6	12. TRADEMARK	18
3.1 TOP PANEL	6		
3.2 BACK PANEL	7		
4. PLACEMENT	7		
5. POWER ON	8		
6. USING YOUR PARTYBOX	8		
6.1 WI-FI CONNECTION WITH YOUR HOME NETWORK	8		
6.2 PLAY OVER YOUR HOME NETWORK	9		
6.3 BLUETOOTH CONNECTION	11		
6.4 USB CONNECTION	11		
6.5 MUSIC CONTROL	12		
6.6 AUX CONNECTION	12		
6.7 MIXING SOUND WITH A MICROPHONE AND / OR GUITAR	12		
6.8 CHARGING YOUR MOBILE DEVICE	13		
7. CARRYING YOUR PARTYBOX	14		
8. ADVANCED USAGE	14		
8.1 LIGHT EFFECT	14		
8.2 JBL PARTYPAD™	14		
8.3 MULTI-SPEAKER CONNECTION	15		
8.4 DAISY CHAIN	15		
8.5 FACTORY RESET	15		
8.6 IPX4	15		

1. INTRODUCTION

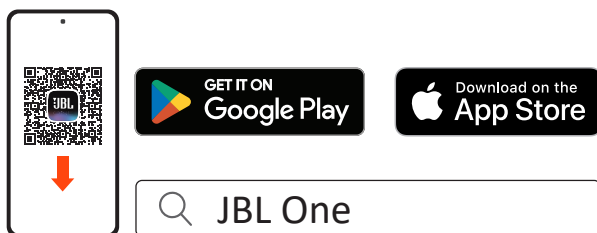
Congratulations on your purchase! This manual includes information about the **PartyBox Ultimate** speaker. We encourage you to take a few minutes to read this manual, which describes the product and includes step-by-step instructions to help you to set up and get started. Read and understand all the safety instructions before using your product.

If you have any questions about the product, its installation or operation, please contact your retailer or customer service, or visit us at www.jbl.com.

JBL One app

With the JBL One app, you can

- easily connect the speaker to your Wi-Fi network;
- connect *music streaming services;
- use one button to access your preset playlist and speaker settings.

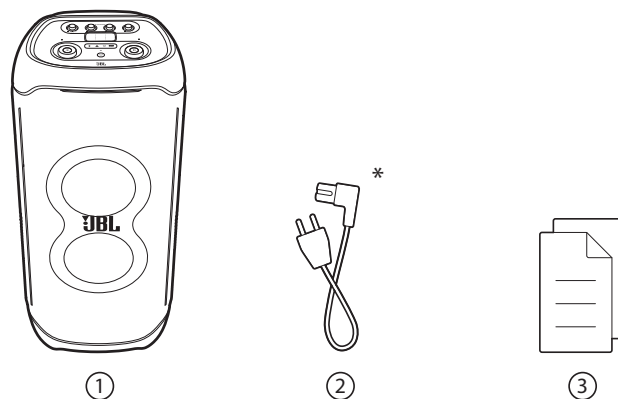


For more information, see [“6.1 Wi-Fi connection with your home network”](#) and [“6.2 Play over your home network”](#).

NOTE:

- *Subscription may be needed and not provided by the JBL One app.

2. WHAT'S IN THE BOX

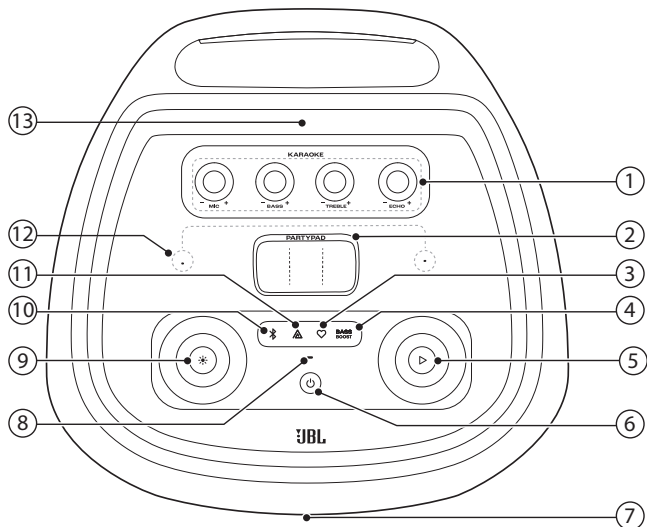


- 1) Main unit
- 2) Power cord*
- 3) Quick Start Guide, Safety Sheet, Warranty Card

*Power cord quantity and plug type vary by regions.

3. PRODUCT OVERVIEW

3.1 Top panel



1) KARAOKE controls (for MIC input only)

- MIC +

- Adjust the microphone volume.

- BASS +

- Adjust the bass level.

- TREBLE +

- Adjust the treble level.

- ECHO +

- Adjust the echo level.

2) PARTYPAD

- Select a special sound effect.

3) ♥ (Moment)

- Press to directly access your music playlist and speaker settings that you have personalized in the JBL One app.

4) **BASS BOOST**

- Enhances the bass level: level 1, level 2, or off.

5) ▷

- Play, pause or resume.
- Rotate clockwise / counterclockwise to increase / decrease the main volume.

6) ⏻

- Turn the power on or off.

7) LED ring

8) Status indicator

System:		
⦿	Regular breathing (white)	System startup
●	Solid (amber)	Restoring factory settings
Network connection:		
⦿	Slow breathing (white)	Entering Wi-Fi setup mode, or network disconnected
●	Solid (green)	Speaker discovered by the JBL One app
○	Solid (white)	Network connected
●	Solid (yellow)	Weak Wi-Fi connection

9) ✨

- Press to turn light effect on or off.
- Hold for more than 2 seconds to turn strobe, starry and outline light on or off.
- Rotate clockwise / counterclockwise to switch between different light patterns.

10) ✎

- Press to enter Bluetooth pairing mode.

11) ⚠

- Press to enter multi-speaker connection.

12) Built-in microphones for calibration

13) Mobile device dock

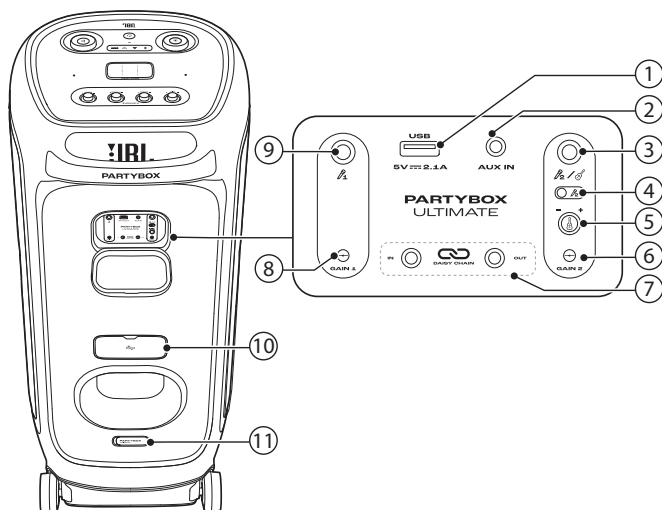
CAUTION:

- Do not look directly at the light-emitting parts when the speaker lights are turned on.

LED behavior

⏻	○	Solid white	Power on
	●	Solid amber	Standby
	⦿	Off	Power off
✎	⦿	Flashing white quickly	Pairing
	○	White (Constant)	Connected
	⦿	Off	Not connected
BASS BOOST	○	Solid white	Level 1 Level 2
	●	Off	Off

3.2 Back panel



1) USB

- Connect to a USB storage device.
- Charge your mobile device.

2) AUX IN

- Connect to an external audio device through a 3.5 mm audio cable (not supplied).

3)


- Connect to a microphone or guitar.

4) Microphone 2/guitar slider switch

5) Guitar volume knob

- Adjust volume of the guitar (if connected).

6) GAIN 2

- Adjust gain of the corresponding microphone () or guitar input.

7) IN/OUT

- Daisy-chain multiple PartyBox speakers through 3.5 mm audio cables (not supplied).

8) GAIN 1

- Adjust gain of the corresponding microphone () input.

9)

- Connect to a microphone.

10) Cable storage cabinet

11) AC power

- Connect to AC power supply.

4. PLACEMENT

CAUTION:

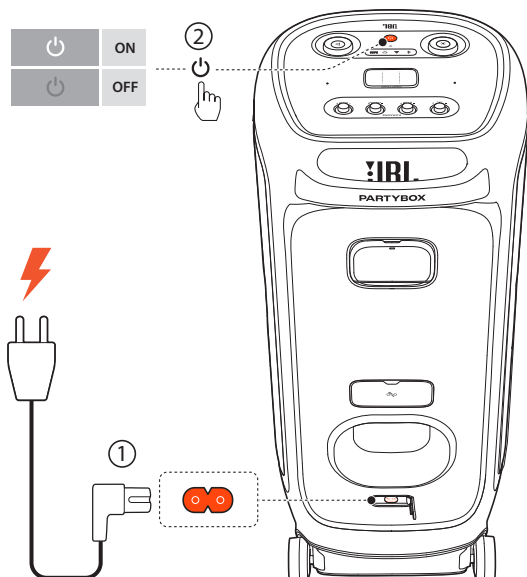
- Do not sit or lean on the speaker or push it sideways to avoid tip-over and possible damages.

Place the speaker on a flat, stable surface and ensure that the rubber feet side is down.

5. POWER ON

CAUTION:

- Use the provided power cord only.



1. Connect AC power.
2. Press to power on.

TIP:

- The speaker switches to network standby mode automatically after 10 minutes of inactivity. You can press on the speaker to switch to normal operation.

6. USING YOUR PARTYBOX

NOTES:

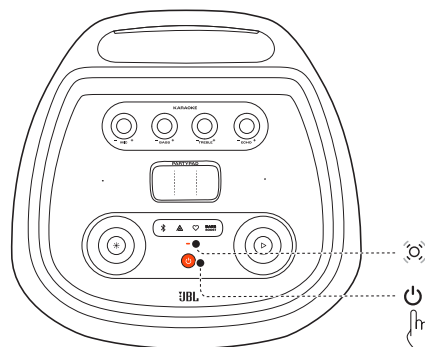
- Only one sound source can be played at a time.
- Make sure that your speaker is connected to the same wireless LAN as your smartphone or tablet.
- Starting playback from another source will always interrupt the current source.
- The speaker can support audio streaming, but not video streaming.
- During music streaming through Chromecast built-in, AirPlay, Alexa Cast, Bluetooth, or other streaming services enabled in the JBL One app, music playback pauses on the current connected device when you start music playback on a second connected device.

6.1 Wi-Fi connection with your home network

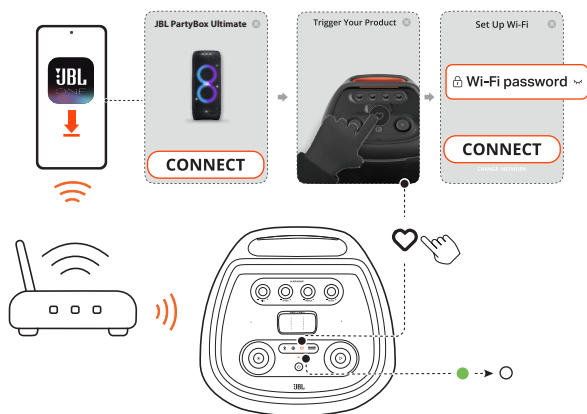
You can connect the speaker to your network through Wi-Fi. With the JBL One app and the supported streaming services (Chromecast built-in, AirPlay, Alexa Cast, and Spotify Connect), the speaker allows you to stream music from smartphones or tablets.

1. On the speaker, enter the Wi-Fi setup mode:

- Press to switch on.
 - (Slow breathing white): The speaker enters Wi-Fi setup mode.



2. Connect your Android™ or iOS device to your home Wi-Fi network. Download the JBL One app.
3. Launch the JBL One app. Follow the app instructions to complete setup.
 - (Solid green): The speaker is discovered by the JBL One app.
 - (Solid white): The speaker is connected to your home network.
 - You can stream music from the JBL One app or the streaming service you have enabled in the JBL One app, such as Chromecast built-in, AirPlay, Alexa Cast, and Spotify Connect.



NOTES:

- If your speaker is not discovered by the JBL One app, hold and together for more than 10 seconds to re-enter the Wi-Fi setup mode.
- On your Android or iOS device, you can rename the speaker in the JBL One app.
- On your iOS device, add the speaker to the Apple Home app and manage it together with other AirPlay 2-compatible speakers.
- On your iOS device, if the speaker has been added to your home network, you can start AirPlay streaming from an AirPlay-compatible app (See “6.2.3 Play through AirPlay”).
- Availability of online music streaming services varies by country.
- Some features require subscriptions or services not available in all countries.

6.2 Play over your home network

Before you start, make sure that:

- your Android or iOS device and your speakers are connected to the same Wi-Fi network for music service streaming and control. (See “6.1 Wi-Fi connection with your home network”).

6.2.1 Play through the JBL One app

Through the JBL One app, stream audio from enabled music services to the speaker.

- On your Android or iOS device, launch the JBL One app, browse available *music streaming services to select music, and then, start music streaming to the connected speaker.



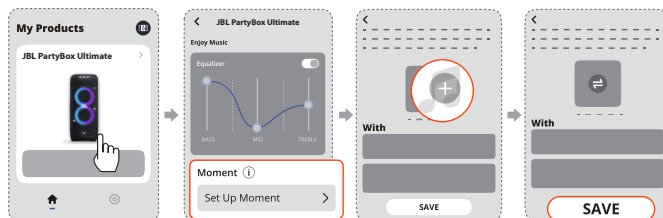
NOTE:

- *Subscription may be needed and not provided by the JBL One app.

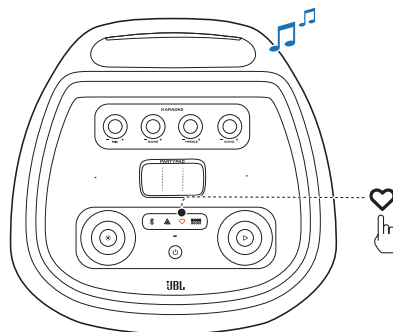
Access your presets with the (Moment) button

By pressing on the speaker, you can access the playlist and speaker settings that you have personalized on the JBL One app.

1. On the JBL One app,
 - Personalize the (Moment) feature.



2. On the speaker,
 - Press to access the personalized playlist and speaker settings.



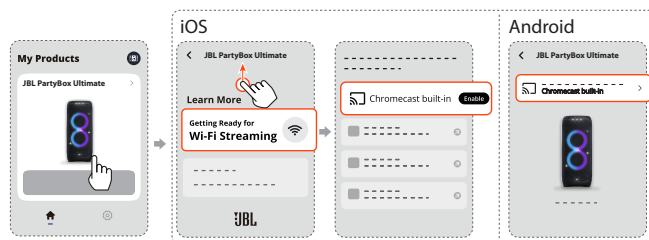
6.2.2 Play through Chromecast built-in


With Chromecast built-in, stream audio on your Android or iOS device to the speaker.

NOTE:

You can only access Chromecast built-in with a Google Assistant-enabled device.

- On your Android or iOS device,
 - a) Launch the JBL One app, and check that you have enabled Chromecast built-in.




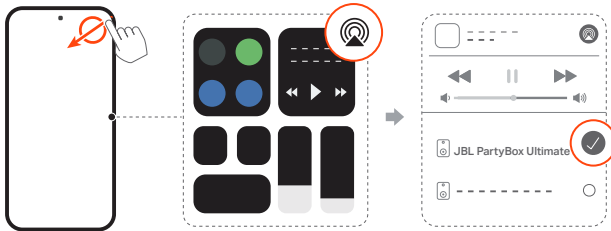
- b) On a Chromecast-enabled app, play music, tap the cast icon  and select the connected speaker.



6.2.3 Play through AirPlay

Through AirPlay, stream audio on your iOS device to the speaker.

- To enter the Control Center on an iOS device, swipe down from the upper right corner. Tap  to select the connected speaker and then, start audio streaming from an app.



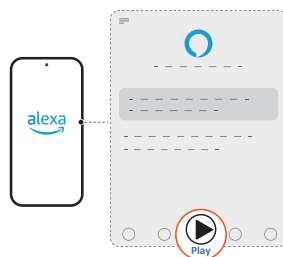
6.2.4 Play through Alexa Cast

With the speaker connected to Alexa Cast, you can stream music from the Amazon Music library to the speaker.

- On your Android or iOS device, launch the JBL One app, and check that you have enabled the streaming service of Amazon Alexa.



- Launch the Amazon Alexa app to start music playback.




- Open the Amazon Music app to access the Amazon Music library.

- Make sure that you start music playback from the same Alexa account that you have enabled in the JBL One app. Refer to the Amazon Alexa app for more details.

6.2.5 Multi-room playback

With the multi-room playback, you can stream music on your Android or iOS device to multiple Chromecast-enabled / AirPlay / Alexa speakers.

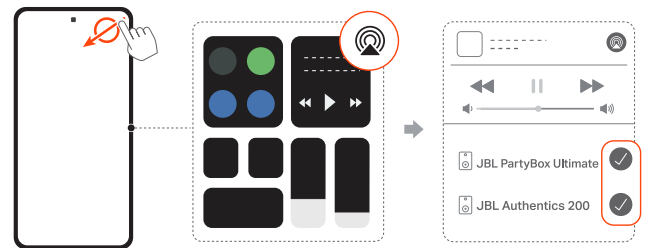
Chromecast built-in


- Through the Google Home app, connect multiple Chromecast-enabled speakers to the same network, assign them to multiple rooms, and create groups as needed.
- Run a Chromecast-enabled app on your smartphone or tablet.
- Play music. Press  and select the grouped speakers.

NOTES:

- To create a multi-room speaker group in the Google Home app, make sure that you have connected all the speakers to the same home network and have used the same Google login account. Refer to the Google Home app for more details.
- Depending on the bandwidth of your local network, you can stream music to up to 6 Chromecast-enabled speakers.

AirPlay



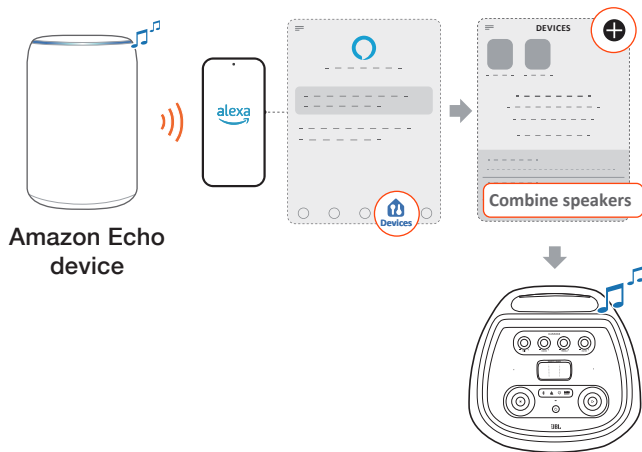
- On an iOS device, enter the Control Center.
- Tap  to select multiple connected speakers as needed.
- Start music streaming from an app.

Alexa MRM: Multi-Room Music

- Check that you have enabled the streaming service of Amazon Alexa on the speaker through the JBL One app.



- Through the Amazon Alexa app, create a Multi-room Music group for the speaker. Refer to the Amazon Alexa app for more information.

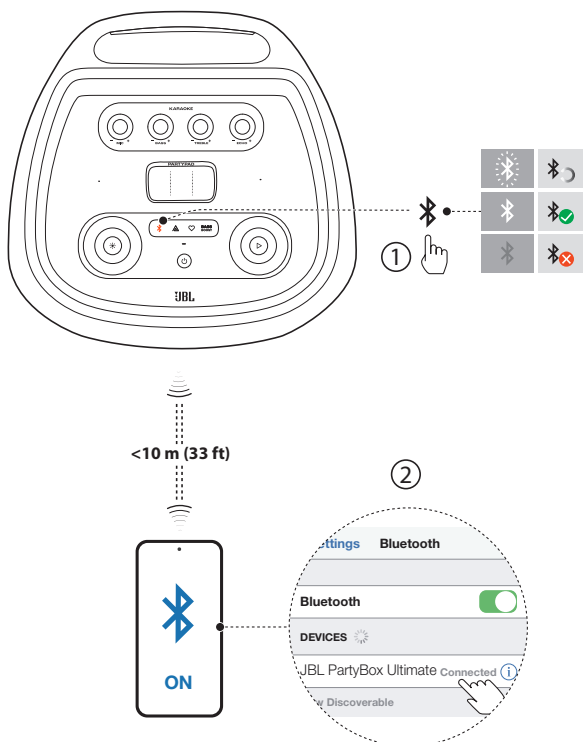


NOTE:

- To create a multi-room music group in the Amazon Alexa app, make sure that you have connected all the devices to the same home network and have used the same Alexa login account. Refer to the Amazon Alexa app for more details.

6.3 Bluetooth connection

You can use the speaker with your Bluetooth enabled smartphone or tablet.



- Press on the speaker to enter Bluetooth pairing mode.
- Choose “JBL PartyBox Ultimate” on your Bluetooth device to connect.
- Once successfully connected, you can stream audio from your Bluetooth device to this speaker.

NOTES:

- This speaker can memorize a maximum of 8 paired devices. The ninth paired device will replace the first one.
- This speaker supports multi-point connection. You can repeat the above step 1 and 2 to pair a second Bluetooth device without disconnecting the first one.
- Enter “0000” if a PIN code is requested for connection to a Bluetooth device.
- Bluetooth performance can be affected by the distance between this product and your Bluetooth device and the environment of operation.

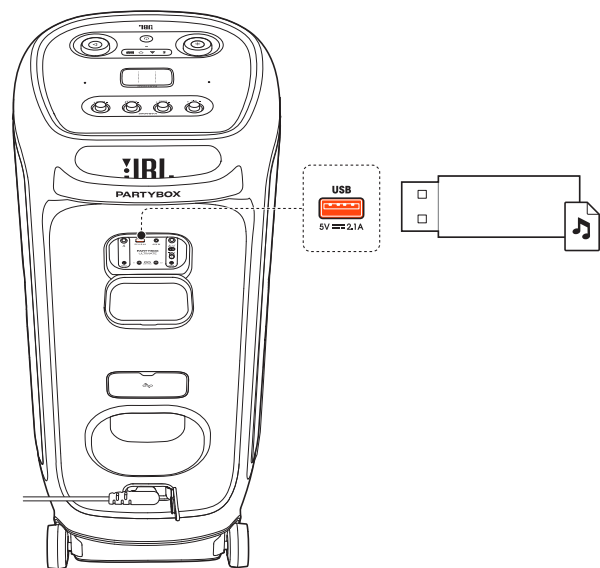
To terminate the Bluetooth-enabled device:

- Turn off this speaker, or
- Disable Bluetooth on your device.

To reconnect the Bluetooth enabled device:

- When you turn on this speaker next time, it tries to reconnect the last connected device automatically.
- If not, manually select “JBL PartyBox Ultimate” on your Bluetooth device to connect.

6.4 USB connection



Plug a USB storage device that contains playable audio contents into the USB port of the speaker.

- The speaker switches to the USB source automatically.
- Audio playback will start automatically.

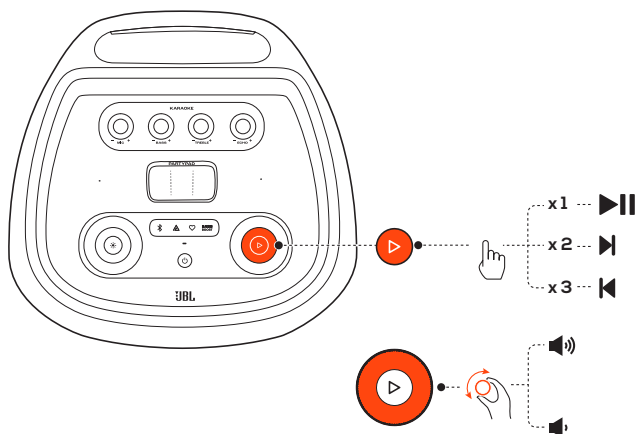
TIP:

- The speaker plays audio files on the USB storage device from the root folder to the last level of subfolders in alphabetical sequence. Up to 8 levels of subfolders are supported.

Supported audio formats

Extension	Codec	Sample rate	Bitrate
WAVE	PCM	8 / 11.025 / 12 / 16 / 22.05 / 24 / 32 / 44.1 / 48	384 / 529.2 / 576 / 768 / 1058.4 / 1152 / 1536 / 2116.8 / 2304
MP3	MPEG1 layer2/3	32 / 44.1 / 48	32 / 40 / 48 / 56 / 64 / 80 / 96 / 112 / 128 / 144 / 160 / 192 / 224 / 256 / 320
	MPEG2 layer2/3	16 / 22.05 / 24	8 / 16 / 24 / 32 / 40 / 48 / 56 / 64 / 80 / 96 / 112 / 128 / 144 / 160
	MPEG2.5 layer3	8 / 11.025 / 12	8 / 16 / 24 / 32 / 40 / 48 / 56 / 64 / 80 / 96 / 112 / 128 / 144 / 160
WMA		8 / 11.025 / 16 / 22.05 / 32 / 44.1 / 48	5 / 6 / 8 / 10 / 12 / 16 / 20 / 22 / 32 / 36 / 40 / 44 / 48 / 64 / 80 / 96 / 128 / 160 / 192 / 256 / 320

6.5 Music control

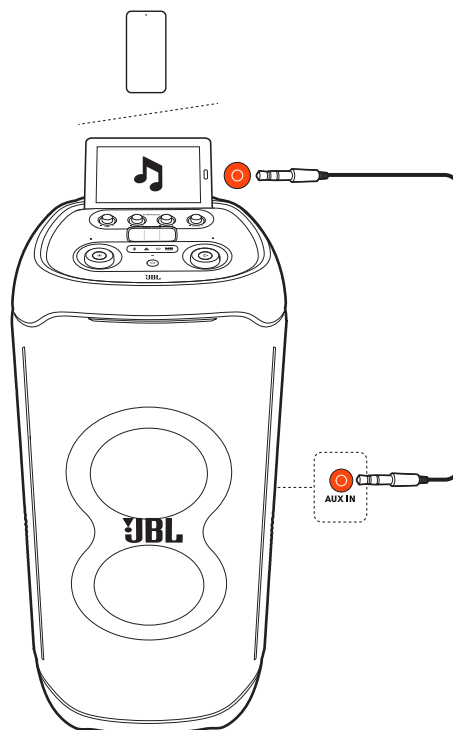


- Press **▶** once to pause or resume playback.
- Press **▶** twice to skip to the next track.
- Press **▶** three times to skip to the previous track.
- Rotate the volume knob clockwise or counterclockwise to increase or decrease main volume.
- Press **BASS BOOST** to enhance the bass level: level 1, level 2, or off.

NOTE:

- The skip operation is unavailable in AUX mode.

6.6 AUX connection



1. Connect an external audio device to the speaker through a 3.5 mm audio cable (not supplied).
2. Start audio playback on the external device.

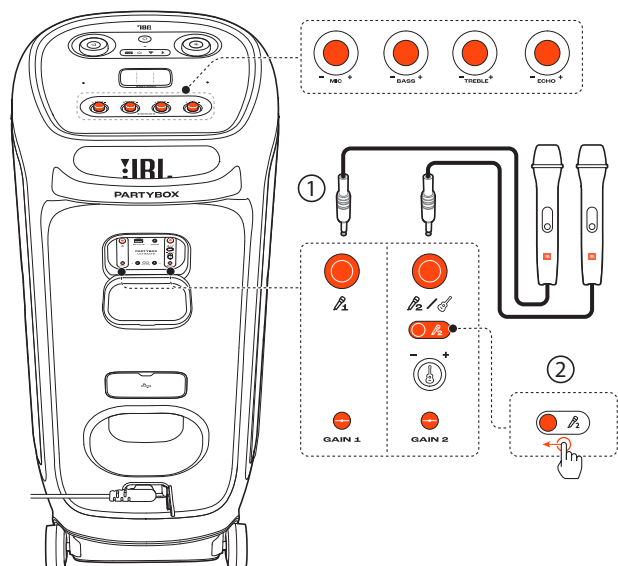
6.7 Mixing sound with a microphone and / or guitar

By using a microphone or electric guitar (not supplied), you can mix sound with an audio source.

NOTES:

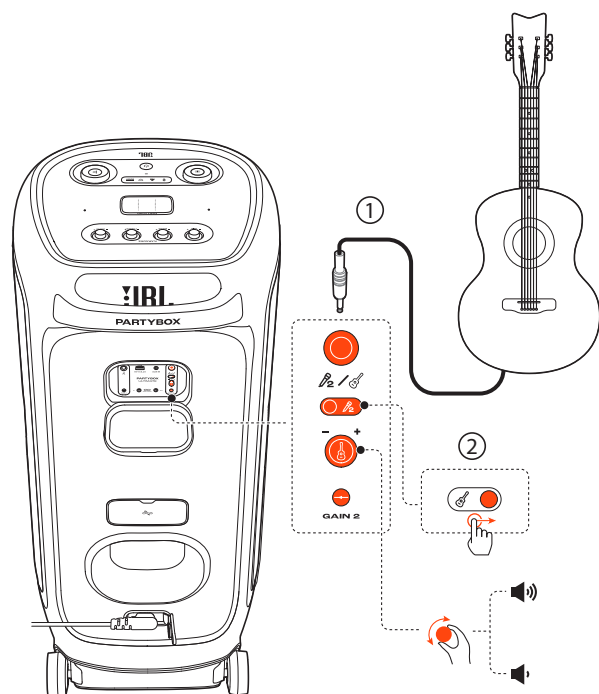
- Always set the guitar or microphone volume to the minimum level before guitar or microphone connection / disconnection.
- Always disconnect the guitar or microphone when you are not using them.

6.7.1 Connecting a Microphone



1. Connect a microphone to the μ 1 or μ 2/g socket.
2. When connecting a microphone to the μ 2/g socket, switch the slider to show μ .

6.7.2 Connecting a Guitar



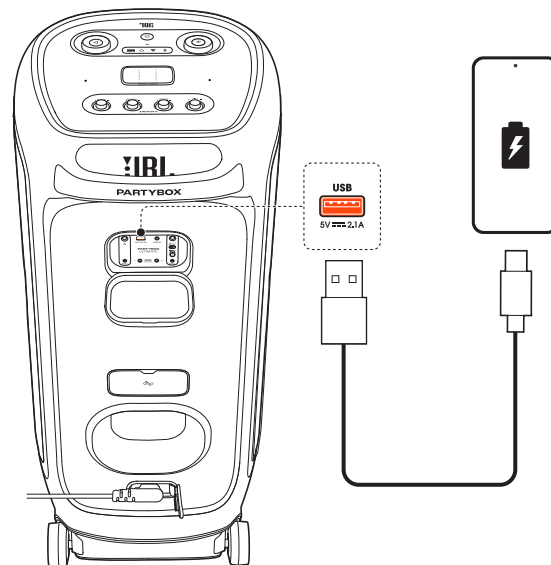
1. Connect a guitar to the μ 2/g socket.
2. Switch the slider to show μ .

6.7.3 Mixing Sound

Sing through the microphone or play guitar.

- To adjust the volume of the microphone, rotate the volume knob on the top panel clockwise or counterclockwise.
- To adjust the volume of the guitar, rotate the guitar volume knob on the rear panel.
- To adjust the gain of the wired microphone or guitar, rotate the corresponding **GAIN 1** or **GAIN 2** control respectively.
- To adjust the echo, treble and bass level of the microphone, rotate the **ECHO**, **TREBLE** and **BASS** knob respectively.

6.8 Charging your mobile device



7. CARRYING YOUR PARTYBOX

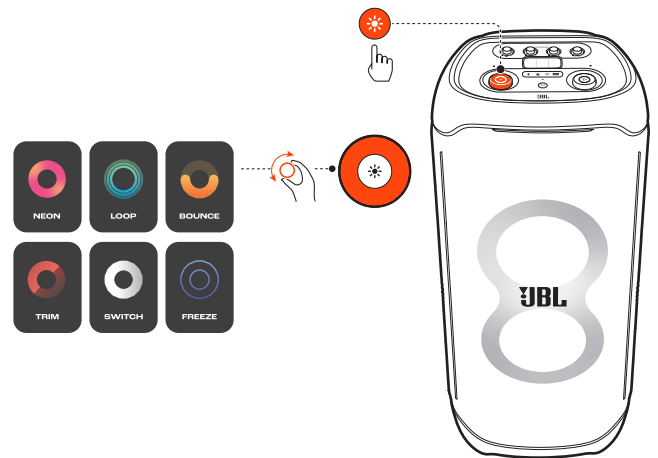
Cautions:

- Before carrying the speaker, ensure that all the cords are disconnected.
- To avoid personal injury and/or property damage, hold the product firmly while carrying.

The PartyBox Ultimate is designed with a handle to help you move the speaker around easily.

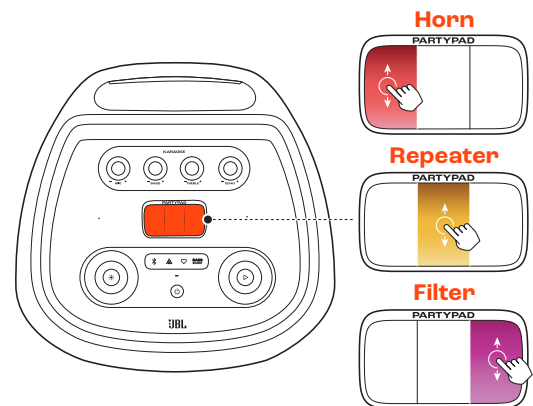
8. ADVANCED USAGE

8.1 Light effect



- Press ✨ to turn light effect on or off.
- Hold ✨ for more than 2 seconds to turn strobe, starry and outline light on or off.
- Rotate the knob clockwise / counterclockwise to switch between different light patterns: NEON, LOOP, BOUNCE, TRIM, SWITCH, or FREEZE.

8.2 JBL PARTYPAD™



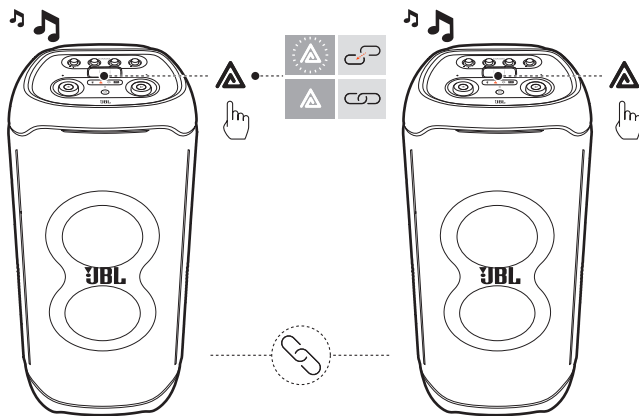
Tap the Partypad to select a special sound effect: Horn, Repeater, or Filter.



Scan the above QR code to watch the online video tutorial.

8.3 Multi-speaker connection

You can connect two or more PartyBox speakers together for even bigger sound.



Press  on both speakers.

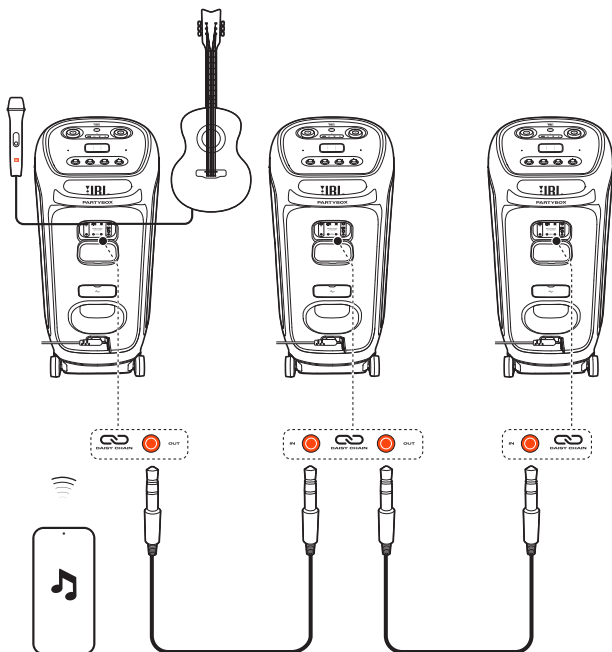
To disconnect:

Power off or press  on either speaker.



TIP:

- By default, the speaker connected to your Bluetooth device acts as the primary speaker.

8.4 Daisy chain



8.5 Factory reset

To restore the factory settings, hold  and  together for more than 10 seconds.

8.6 IPX4

CAUTIONS:

- Always keep the port dry before connecting AC power.
- To ensure splash resistance, always keep the protective covers closed securely.

The speaker is IPX4 splash resistant.



9. SPECIFICATIONS

- Output power: 1100W RMS (IEC60268)
- Power input: 100 – 240 VAC ~50/60Hz
- Frequency response: 30Hz-20KHz (-6dB)
- Signal-to-noise ratio: >80dB
- Cable type: right-angle AC power cable (type varies by regions)
- Cable length: 2.0 m / 6.6 ft
- Supported formats: .mp3, .wma, .wav
- Transducers: 2 x 242 mm (2 x 9") subwoofer, 2 x 120 mm (2 x 4.5") mid-range, 2 x 74 mm (2 x 2.75") tweeter
- USB charge out: 5V / 2.1A (max)
- USB format: FAT16, FAT32
- 5G Wi-Fi transmitter frequency range: 5.15-5.35GHz, 5.470-5.725GHz, 5.725-5.825GHz
- 5G Wi-Fi transmitter power: <23dBm (EIRP)
- 5G Wi-Fi modulation: OFDM (BPSK, QPSK, 16QAM, 64QAM, 256QAM, 1024QAM)
- 5G Wi-Fi network compatibility: 802.11a/n/ac/ax
- 2.4G Wi-Fi transmitter frequency range: 2.4GHz-2.4835GHz
- 2.4G Wi-Fi transmitter power: <20dBm
- 2.4G Wi-Fi modulation: DSSS (DBPSK, DQPSK, CCK), OFDM (BPSK, QPSK, 16QAM, 64QAM, 256QAM, 1024QAM)
- 2.4G Wi-Fi network compatibility: 802.11 b/g/n/ax
- Bluetooth® version: 5.3
- Bluetooth® profile: A2DP V1.3, AVRCP V1.5
- Bluetooth® transmitter frequency range: 2400 MHz – 2483.5 MHz
- Bluetooth® transmitter power: ≤15dBm (EIRP)
- Bluetooth® transmitter modulation: GFSK, π/4 DQPSK, 8DPSK
- Aux-In: 250 mVrms (3.5 mm connector)
- Mic-In: 20 mVrms
- Guitar-In: 100 mVrms
- Bluetooth/USB Input: -12 dBFS
- Product dimensions (W x H x D): 455 mm x 1049 mm x 440 mm / 17.91" x 41.30" x 17.32"
- Net Weight: 39.5 kg / 87.10 lbs
- Packaging dimensions (W x H x D): 1155 mm x 520 mm x 525 mm / 45.5" x 20.5" x 20.7"
- Gross Weight: 44.5 kg / 98.1 lbs

10. TROUBLESHOOTING

Caution:




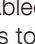
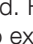
- Never try to repair the product by yourself. If you have any problems while using this product, check the following points before you request service.

System

The speaker will not turn on.

- Check the AC power connection.

No response from some buttons

- The product may be in demo mode. In demo mode, all the input sources and buttons, except  /  /  and the volume and light pattern knobs, are disabled. Hold  and  simultaneously for more than 10 seconds to exit.

Sound

No sound from the speaker.

- Ensure that the speaker is powered on.
- Adjust volume.
- Ensure that a sound source is active.

Bluetooth

A device cannot connect with the speaker.



- Ensure that the Bluetooth function of the device is enabled.

Poor audio quality from a connected Bluetooth device

- The Bluetooth reception is poor. Move the device closer to the speaker, or remove any obstacle between the device and speaker.

Wi-Fi

Failed to connect to Wi-Fi.

- Make sure that Wi-Fi is turned on.
- Make sure that you have selected the right network and entered the correct password.
- Make sure that your router or modem is turned on and within the range.
- In your router settings, make sure that you have set the security type to WPA2 or auto.
- Make sure that your speaker is connected to the same wireless LAN as your smartphone or tablet.
- If you have difficulties in setting up Wi-Fi, hold  and  together on the speaker until the status indicator slowly breathes white.

Playback



AirPlay cannot find the speaker as an AirPlay speaker for music streaming.

- On your Apple device, update the software to the latest version: iOS 13.4 and later, macOS 10.15.4 and later, or tvOS 14.3.
- Make sure that your Apple device has been connected to the same network as the speaker.
- For a PC running iTunes for Windows, you can stream music from your PC to the speaker through Bluetooth.

Music playback does not work smoothly when the sound source switches from Bluetooth to Chromecast built-in, AirPlay or Alexa.

- The quality of audio casting and playback are dependent on the traffic and coverage of the network that connects the speaker and your casting devices, such as phones, tablets and PCs.

The speaker is in the “Offline” status in the Amazon Alexa app or there are issues with Alexa MRM-related playback.

- To recover the speaker, restore the speaker to its factory settings by holding  and  together for more than 10 seconds.

No music playback on the Audio In source when the sound source switches from Bluetooth to Audio In.

- Disconnect and reconnect the 3.5mm audio cable to the speaker.

11. COMPLIANCE

The product is in compliance with the European Union energy legislation.

1. Information on power consumption

This equipment complies with European Commission Regulation (EC) No 1275/2008 and (EU) No 801/2013.

Off: N/A

Standby (when all wireless connections are deactivated): < 0.5 W

Networked standby: < 2.0 W

2. The period of time after which the power management function switches the equipment automatically into:

Off	N/A	
Standby	When all wired ports are disconnected and all wireless network connections are deactivated	Switched to standby mode after 10 minutes.
Networked standby	When any wireless network connection is activated	Switched to networked standby mode after 10 minutes of inactivity in operational mode

3. If this equipment has the wireless network connections:

How to activate wireless network connections:

- Set up the equipment properly;
- Switch into wireless mode (Bluetooth, Chromecast built-in™, AirPlay 2 casting audio, Alexa Multi-Room Music & etc);
- Connect with energy using products (e.g. players/ game consoles/ STB (Set-Top Boxes)/ phones/ tablets /PCs).

12. TRADEMARK



The Bluetooth® word mark and logos are registered trademarks owned by Bluetooth SIG, Inc. and any use of such marks by HARMAN International Industries, Incorporated is under license. Other trademarks and trade names are those of their respective owners.



The Wi-Fi CERTIFIED™ Logo is a certification mark of Wi-Fi Alliance®



Dolby, Dolby Atmos, and the double-D symbol are registered trademarks of Dolby Laboratories Licensing Corporation. Manufactured under license from Dolby Laboratories. Confidential unpublished works. Copyright © 2012–2021 Dolby Laboratories. All rights reserved.



Google, Android, Google Play, Google Home and other marks are trademarks of Google LLC. Google Assistant is not available in certain languages and countries.



Use of the Works with Apple badge means that an accessory has been designed to work specifically with the technology identified in the badge and has been certified by the developer to meet Apple performance standards.

Apple, and AirPlay are trademarks of Apple Inc., registered in the U.S. and other countries.

To control this AirPlay 2-enabled speaker, iOS 13.4 or later is required.



Amazon, Alexa and all related marks are trademarks of Amazon.com, Inc. or its affiliates.



Use your phone, tablet or computer as a remote control for Spotify. Go to spotify.com/connect to learn how.

The Spotify Software is subject to third party licenses found here: <https://www.spotify.com/connect/third-party-licenses>.



HARMAN International Industries,
Incorporated 8500 Balboa Boulevard,
Northridge, CA 91329 USA
www.jbl.com

© 2023 HARMAN International Industries, Incorporated.
All rights reserved.

JBL is a trademark of HARMAN International Industries, Incorporated, registered in the United States and/or other countries. Features, specifications and appearance are subject to change without notice.