

# QUICK START GUIDE

REFLECTFLOW

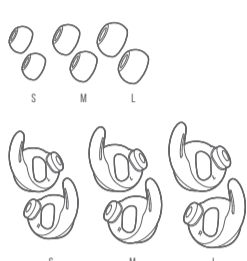


## WHAT'S IN THE BOX

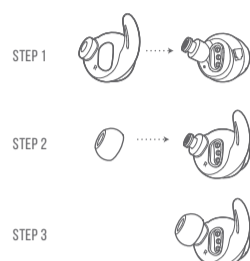


## HOW TO WEAR

**SELECT YOUR SIZE**  
MIX AND MATCH FOR A PERFECT FIT AND AUDIO PERFORMANCE



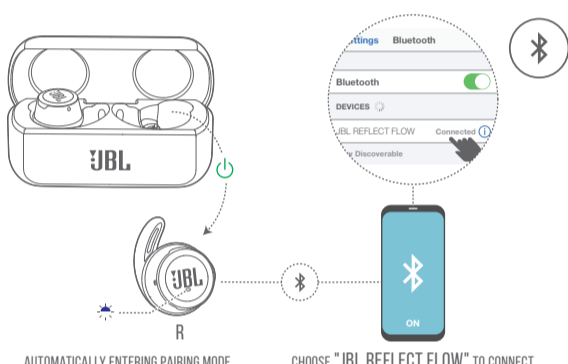
**ATTACH EAR TIPS AND ENHANCERS**



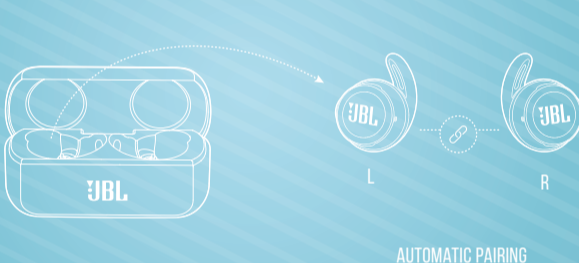
## FIRST TIME USE



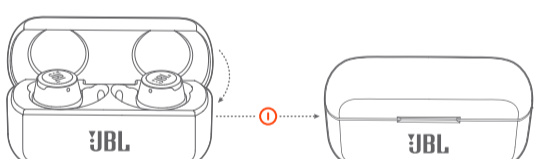
## POWER ON & CONNECT



## PAIRING



## POWER OFF



## MANUAL CONTROLS

POWER ON & CONNECT TO DEVICE



CONNECTING



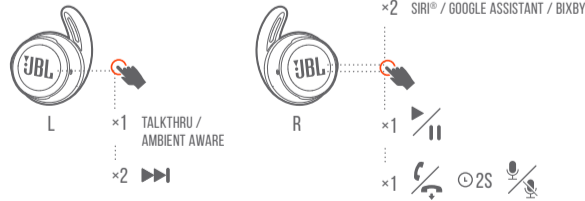
POWER ON



POWER OFF



## BUTTON COMMAND



## CHARGING



## LED BEHAVIORS

