

QUICK START GUIDE

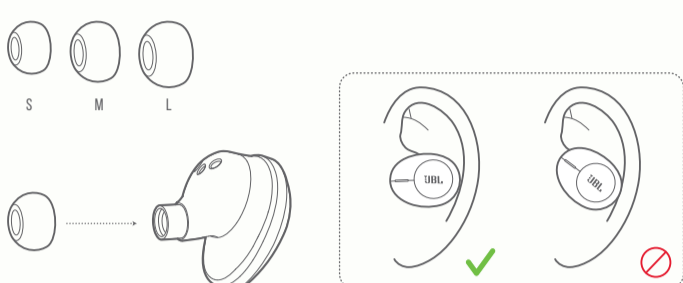
TUNE 120TWS



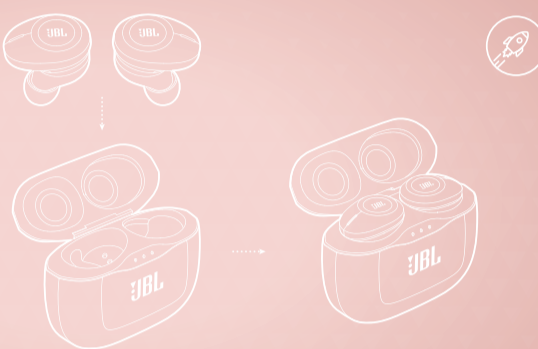
WHAT'S IN THE BOX



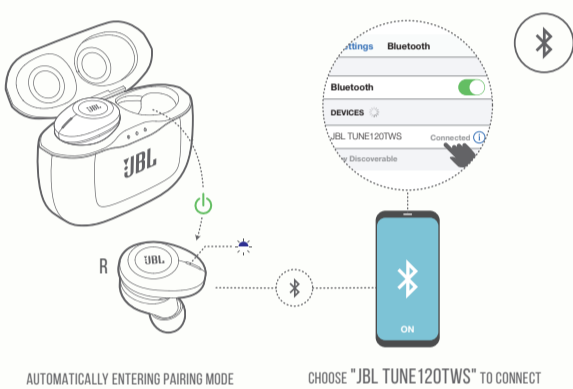
HOW TO WEAR



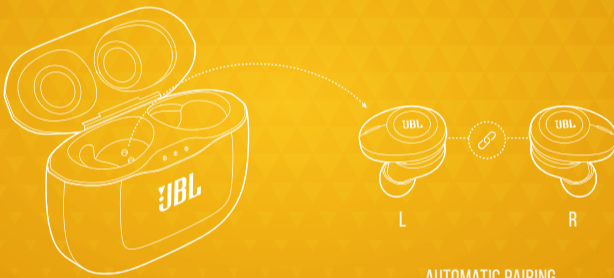
FIRST TIME USE



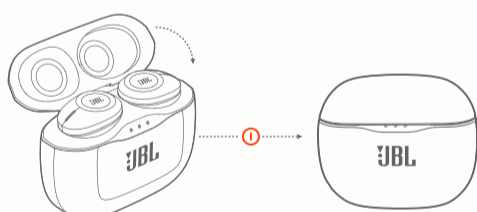
POWER ON & CONNECT



PAIRING



POWER OFF

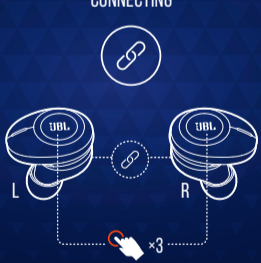


MANUAL CONTROLS

POWER ON & CONNECT TO DEVICE



CONNECTING



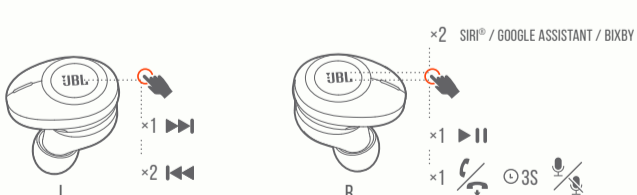
POWER ON



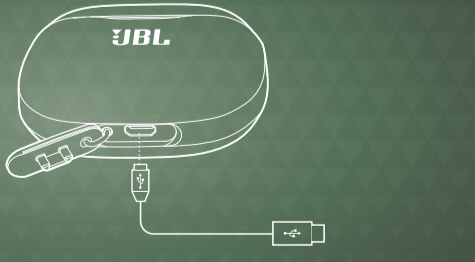
POWER OFF



BUTTON COMMAND



CHARGING



LED BEHAVIORS

