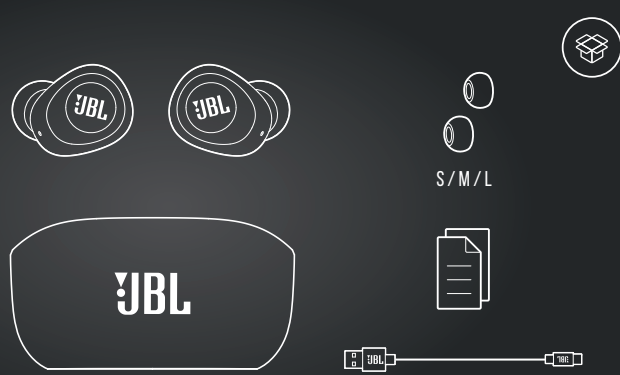
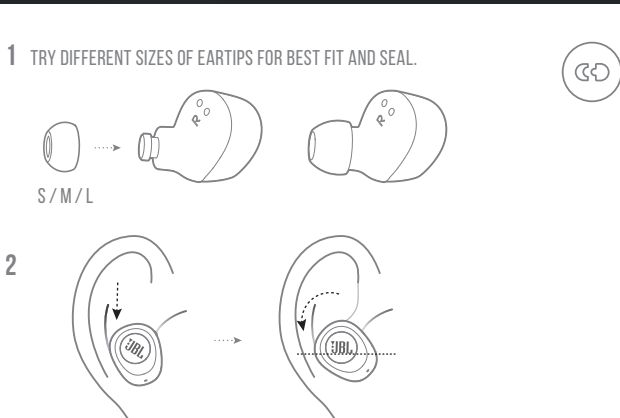




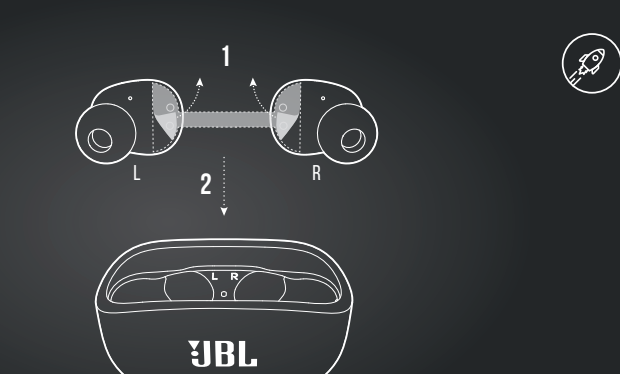
WHAT'S IN THE BOX



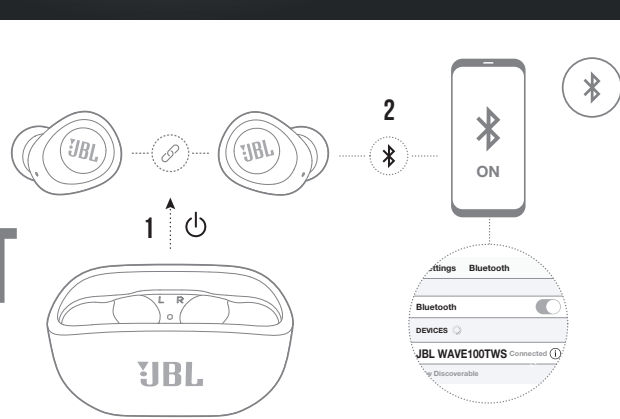
HOW TO WEAR



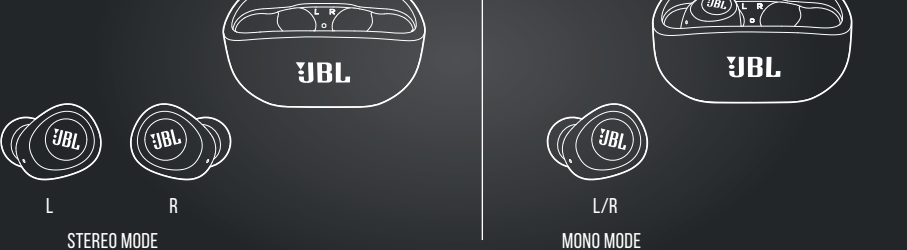
FIRST TIME USE



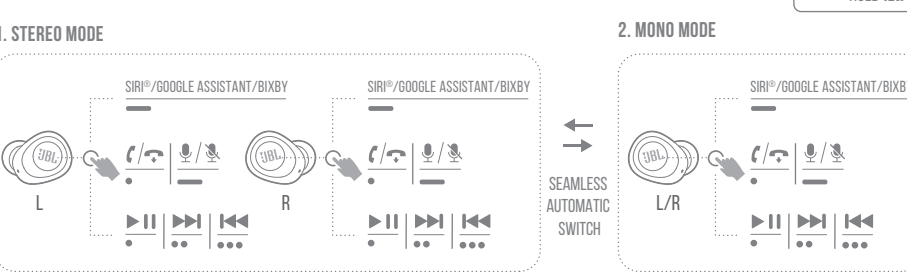
POWER ON & CONNECT



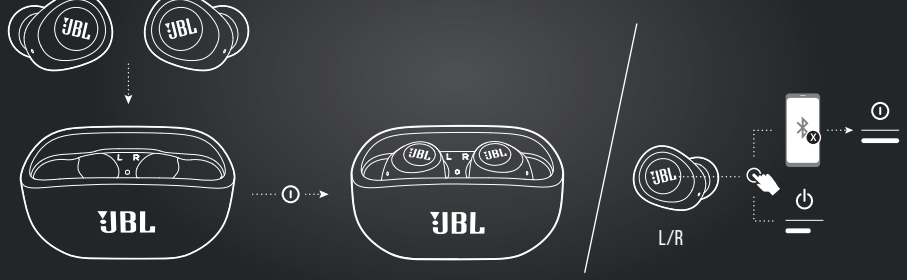
DUAL CONNECT



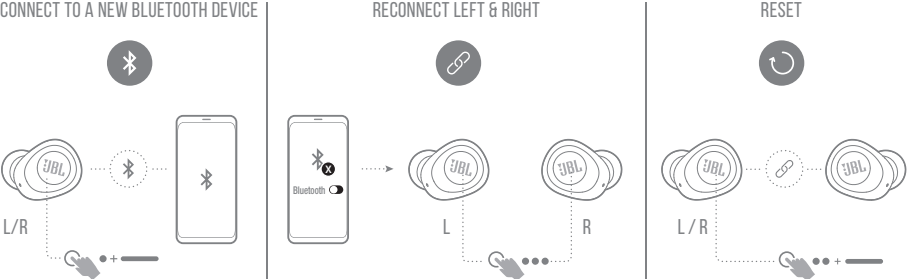
BUTTON COMMAND



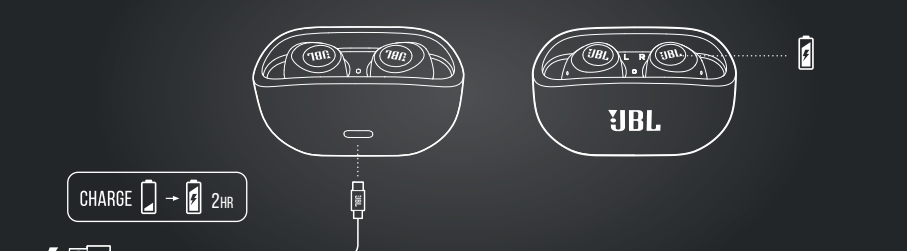
POWER OFF



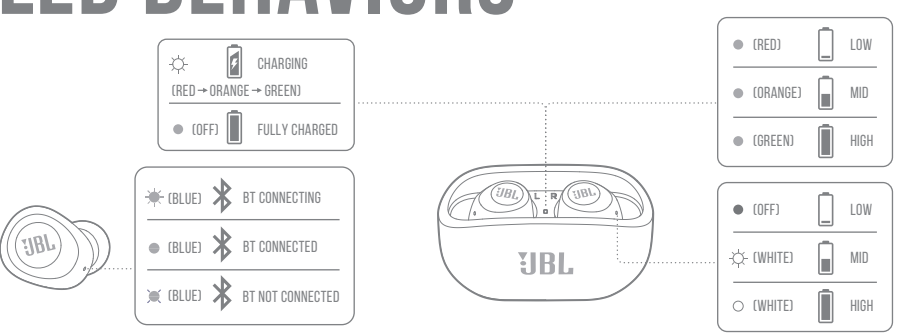
MANUAL CONTROLS



CHARGING



LED BEHAVIORS



TECH SPEC

Model:	WAVE100TWS
Driver Size:	8 mm / 0.31" Dynamic Driver
Power supply:	5V --- 1 A
Weight:	46.3 g / 0.102 lbs
Earpiece:	5.1 g / 0.011 lbs (10.2 g / 0.022 lbs combined)
Charging case:	36.1 g / 0.08 lbs
Headset battery type:	Lithium-ion Battery (45 mAh / 3.7V)
Charging case battery type:	Lithium-ion Battery (550 mAh / 3.7 V)
Charging time:	2 hrs from empty
Music playtime with BT on:	up to 5 hrs
Frequency Response:	20 Hz - 20 kHz
Impedance:	16 ohm
Sensitivity:	105.5 dB SPL@1kHz
Maximum SPL:	94 dB
Microphone sensitivity:	-11.3 dBV@1 kHz / Pa
Bluetooth version:	5.0
Bluetooth profile version:	A2DP V1.3 AVRCP V1.6 HFP V1.7
Bluetooth transmitter frequency range:	2.4 - 2.4835 GHz
Bluetooth transmitter power:	< 10 dBm
Bluetooth transmitter modulation:	GFSK, n/4-DQPSK, 8-DPSK
Maximum operation temperature:	45°C

