



LaCie d2 Professional User Manual



Click here to access an up-to-date online version of this document. You will also find the most recent content as well as expandable illustrations, easier navigation, and search capability.

Contents

| | | |
|----------|---|-----------|
| 1 | Introduction | 4 |
| | Box content | 4 |
| | Minimum system requirements | 4 |
| | • Ports | 4 |
| | • Operating system | 4 |
| | • Minimum free disk space | 4 |
| | Views | 4 |
| | • Front | 5 |
| | • Back | 5 |
| | Technical specifications | 5 |
| | • Enclosure dimensions | 5 |
| | • Weight | 5 |
| | • Electrical | 6 |
| | Position and stacking | 6 |
| 2 | System LEDs | 7 |
| | Power button | 7 |
| | • Power on | 7 |
| | • Power off | 8 |
| | Power-saving mode | 8 |
| | • Manually initiating power-saving mode | 8 |
| | • Power-saving mode: managed by the PC/Mac | 8 |
| | • Exiting power-saving mode | 8 |
| | LED status | 9 |
| | Receiving power | 9 |
| 3 | Cable and Connectors | 11 |
| | USB-C protocols | 11 |
| | USB-C cable | 11 |
| 4 | Getting Connected | 13 |
| | STEP 1 – Connect the USB cable | 13 |
| | • USB-C to USB-C | 13 |
| | • USB-C to USB Type A | 13 |
| | STEP 2 - Prepare and connect the power supply | 14 |
| | STEP 3 - Set up LaCie d2 Professional | 15 |
| | Storage format | 16 |
| | Disconnecting the hard drive | 17 |
| 5 | Works with iPad USB-C | 18 |

| | | |
|----------|---|-----------|
| 6 | Safely Remove Device From Your Computer | 19 |
| | Windows | 19 |
| | Mac | 19 |
| | • Eject via Finder window | 19 |
| | • Eject via Desktop | 19 |
| 7 | Optional Formatting and Partitioning | 21 |
| | Choosing a file system format | 21 |
| | • Compatibility with both Windows and Macs | 21 |
| | • Optimized performance for Windows | 21 |
| | • Optimized performance for macOS | 21 |
| | • Learn more | 22 |
| | Formatting instructions | 22 |
| 8 | Frequently Asked Questions | 23 |
| | Hard drive icon | 23 |
| | File transfers | 24 |
| | File transfer error messages | 24 |
| | Using a USB hub for USB devices | 25 |
| | Provided USB cables | 25 |
| | USB 3.0 ports | 25 |
| 9 | Regulatory Compliance | 26 |
| | FCC Declaration of Conformance | 26 |
| | FCC Class A Information | 26 |
| | FCC Caution | 26 |
| | Important Note: FCC Radiation Exposure Statement | 26 |
| | China/Taiwan RoHS | 27 |
| | • China RoHS 2 | 27 |
| | • Taiwan RoHS | 28 |
| | Industry Canada | 29 |
| | Important Note for mobile device use | 29 |
| | Note Importante pour l'utilisation de dispositifs mobiles | 30 |
| | Europe – EU Declaration of Conformity | 30 |
| | Power source | 31 |

Introduction

LaCie d2 Professional is ideal for professional editors, photographers and graphic artists who work with bandwidth-intensive content such as 4K video and 3D graphics.

For updated technical information about your device, visit www.lacie.com/support/d2-pro.

Box content

- LaCie d2 Professional
- USB-C (USB 3.1 Gen 2) cable
- External power supply
- Quick Install Guide



Important—Save your packaging. If you experience problems with your hard drive and want to exchange it, the hard drive must be returned in its original packaging.

Minimum system requirements

Ports

Use the included cable to connect your LaCie device to a computer with a USB-C port.

Operating system

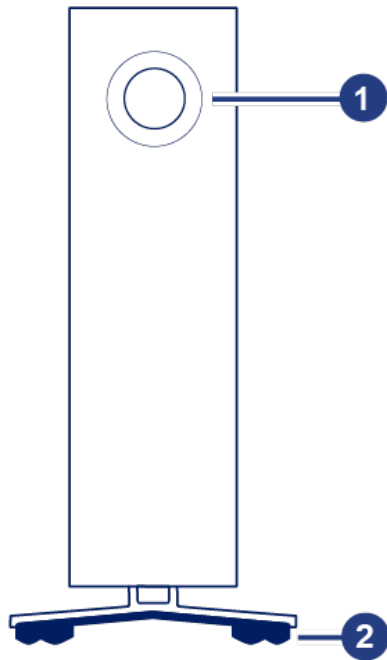
Go to [Operating System Requirements for Seagate Hardware & Software](#).

Minimum free disk space

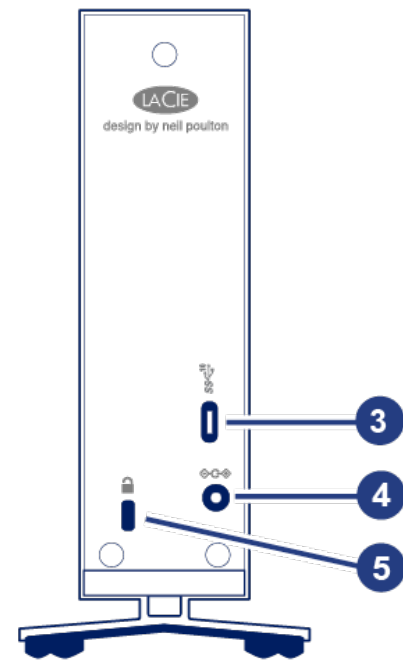
600MB recommended.

Views

Front



Back



1. Multi-function status LED / power button
2. Vibration-dampening rubber feet
3. USB 3.1 Gen 2 port
4. Power supply connection
5. Kensington® lock slot

Technical specifications

Enclosure dimensions

| Side | Dimensions (mm / in) |
|--------|----------------------|
| Width | 60 / 2.36 |
| Height | 30 / 5.12 |
| Length | 195 / 7.68 |

Weight

| Capacity | Weight (kg / lbs) |
|----------|-------------------|
| 4TB | 1.3 / 2.87 |
| 6TB | 1.3 / 2.87 |

| Capacity | Weight (kg / lbs) |
|----------|-------------------|
| 10TB | 1.3 / 2.87 |

Electrical

| Power supply | |
|--------------|--|
| 100-240V | |
| 50-60 Hz | |
| 18W | |

| Power supply barrel dimensions (mm) | |
|-------------------------------------|------|
| Inner diameter | 2.5 |
| Outer diameter | 5.5 |
| Length | 11.5 |



Use only the power supply provided with your LaCie d2 Professional. Power supplies from third-party devices and other LaCie products can damage your d2 Professional.

Position and stacking

Always make certain to place your LaCie d2 Professional on a flat, even surface that can support the heat output and airflow of a professional hard drive enclosure. For proper heat dissipation, d2 Professional is designed to stand upright. Do not place the enclosure on its side when it is powered on.

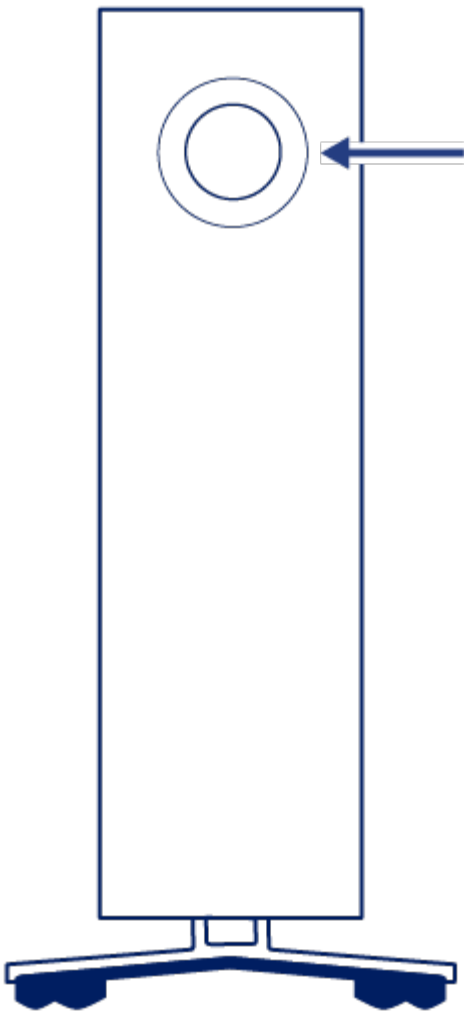
The device does not support stacking. Do not stack other drives, enclosures, or equipment on top of the enclosure.

The warranty for your d2 Professional will be voided if you:

- Stack d2 Professional on another device.
- Stack other drives, enclosures, or equipment on top of d2 Professional.

System LEDs

LaCie d2 Professional features a multi-functional LED and power button on the front of the enclosure.



Power button

Power on

In most instances, d2 Professional powers on automatically when connected to a computer and an active power source. However, the LED button can be used to power on the device if the following two conditions are met:

- The device was powered off using a long press.
- The device remains connected to the computer's USB port and an active power source.

To power on the device, push the LED button for one second.

Power off

Follow the steps below to turn the device off:

1. Make certain that d2 Professional's volumes are not being accessed.
2. Eject the volumes. See [Safely Remove Device From Your Computer](#) for instructions. Once the volumes have been properly ejected, the device enters power-saving mode.
3. Apply a long press (minimum four seconds) to the LED button. The LED turns solid blue before turning off.

Power-saving mode

Your d2 Professional can conserve energy by entering power-saving mode. The hard drive within the enclosure spins down to reduce power consumption when the device is in power-saving mode. Power-saving mode can extend the life of the hard drive by sparing it from working during extended periods of inactivity.

Manually initiating power-saving mode

You can place d2 Professional in power-saving mode using the LED button.

1. Make certain that d2 Professional's volumes are not being accessed.
2. Eject the volumes. See [Safely Remove Device From Your Computer](#) for instructions. Once the volumes have been properly ejected, the device enters power-saving mode.
3. Apply a short press to the LED button. A short press lasts no longer than 1 second.

To wake up the device, apply another short press to the LED button.

Power-saving mode: managed by the PC/Mac

You can initiate power-saving mode on your computer.

1. Place the host computer into sleep mode.
2. **macOS**—Go to [System Preferences > Energy Saver](#) to enable sleep mode for hard drives.

Windows—Go to [Control Panel > Hardware > Power Options > Choose a power plan > Change advanced power settings](#). Click on [Hard disk](#) and [Turn off the hard disk after](#). Choose the time to spin down USB hard drives.

Exiting power-saving mode

To exit power-saving mode, review the table below:

Entering power-saving mode

The host computer placed the product into power-saving mode due to inactivity.

Exiting power-saving mode

Access d2 Professional's volume on the host computer. For example, copy files to its volume.

The computer is in sleep mode.

Wake up the computer.

LED status

The LED helps you identify the general status of your d2 Professional.

| LED | State |
|--|--|
| Off | The device is turned off. The USB-C cable is not connected to a computer that is turned on and/or the power cable is not connected to a live power outlet. |
| Solid blue | Device is ready. |
| Blinking blue | During normal operation, the LED blinks to indicate access to the hard drive. |
| Slow blinking blue, 10 second interval | The device is in power-saving mode because the host computer is in sleep mode. |
| Fast blinking blue | Device is starting up or shutting down. |
| Blinking red, 1 second interval | Temperature warning. |
| Solid red | Temperature critical. |

Receiving power

LaCie d2 Professional powers on automatically when it meets the following two conditions:

- Connected directly to a computer. The computer must be powered on.
- Connected to a live power source via the included power supply.



Use only the power supply provided with your LaCie d2 Professional. Power supplies from third-party devices and other LaCie products can damage your d2 Professional.

Cable and Connectors

USB-C protocols

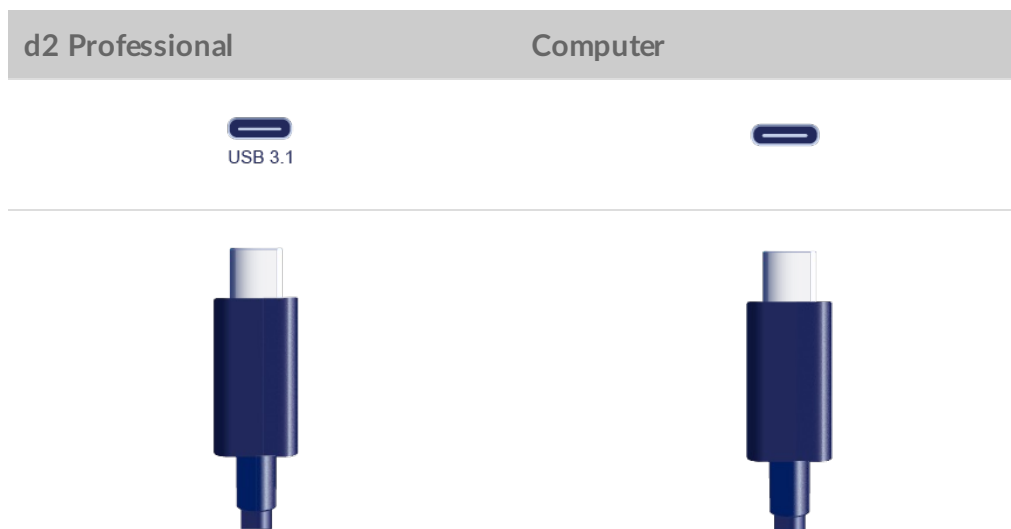
USB is a serial input/output technology for connecting peripheral devices to a computer. USB-C is the latest implementation of this standard and it provides higher bandwidth and new power management features.

USB-C supports many protocols:

| | |
|--------------------|------------------------------|
| Thunderbolt 3 | Transfer rates up to 40Gb/s |
| USB 3.1 Gen 2 | Transfer rates up to 10Gb/s |
| USB 3.1 Gen 1 | Transfer rates up to 5Gb/s |
| SuperSpeed USB 3.0 | Transfer rates up to 5Gb/s |
| Hi-Speed USB 2.0 | Transfer rates up to 480Mb/s |

USB-C cable

Use the USB-C to USB-C cable to connect d2 Professional to a USB-C (USB 3.1 or Thunderbolt 3) port on your computer.



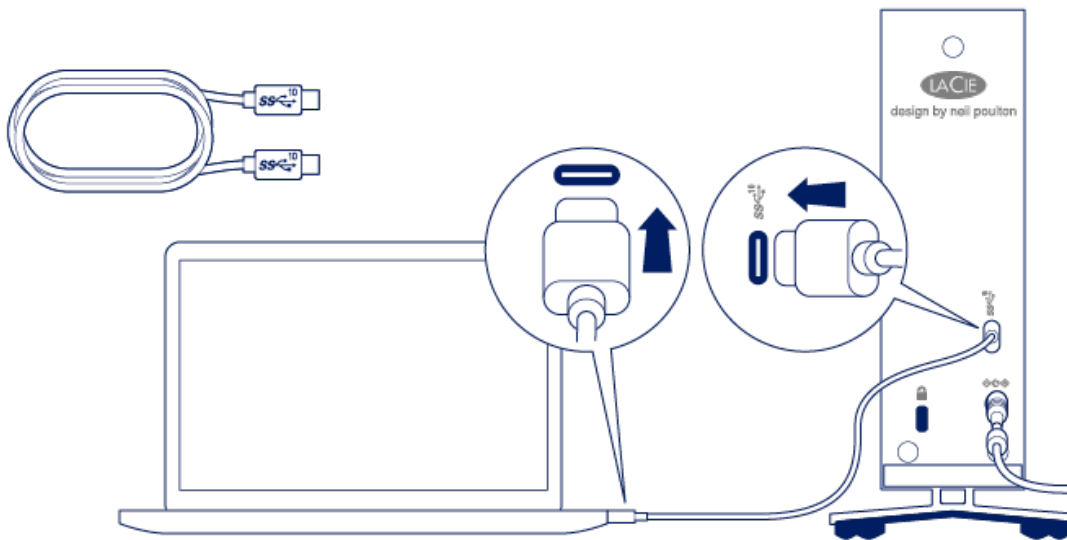
Getting Connected

STEP 1 – Connect the USB cable

Confirm the type of USB port on your computer, and then choose the appropriate cable to connect LaCie d2 Professional.

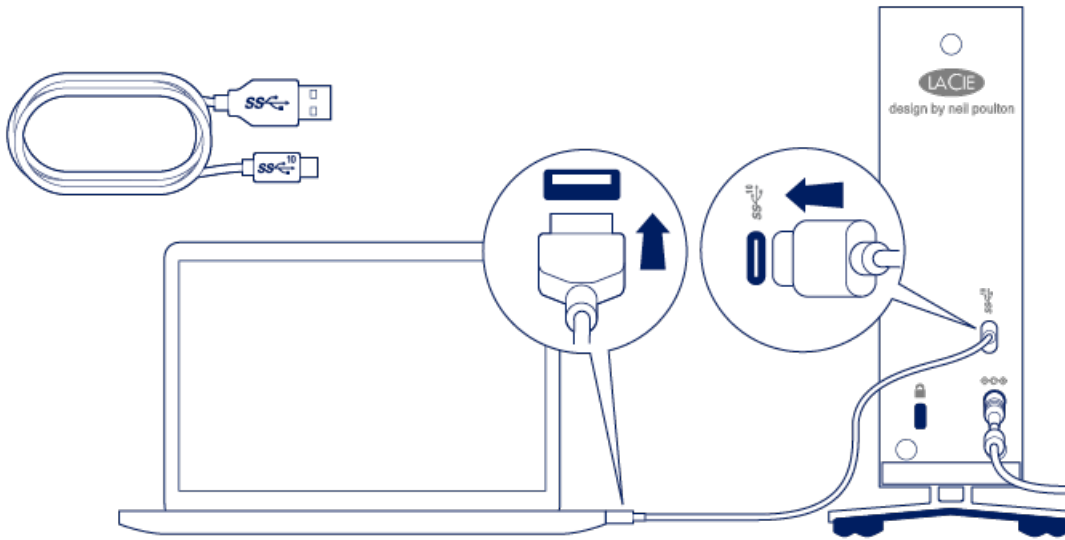
USB-C to USB-C

For optimal transfer rates, use the USB-C to USB-C cable to connect d2 Professional to a USB-C (USB 3.1 or Thunderbolt 3) port on your computer.



USB-C to USB Type A

Use the USB-C to USB Type A cable to connect d2 Professional to a computer's Type A port (USB 3.0 or USB 2.0).

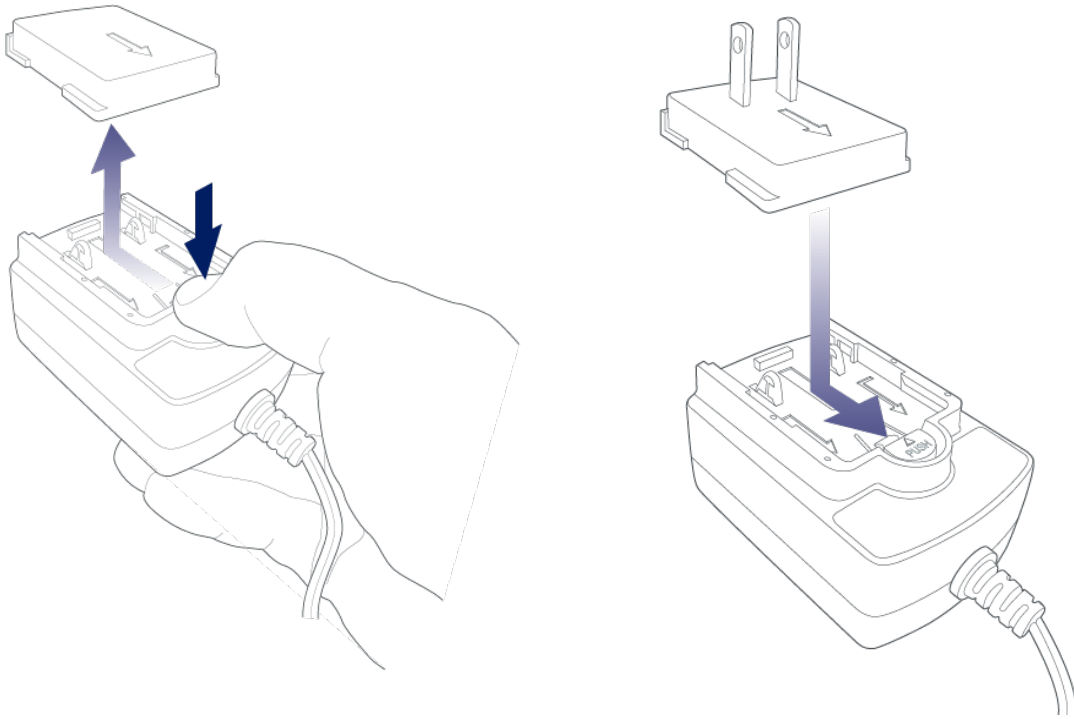


STEP 2 - Prepare and connect the power supply

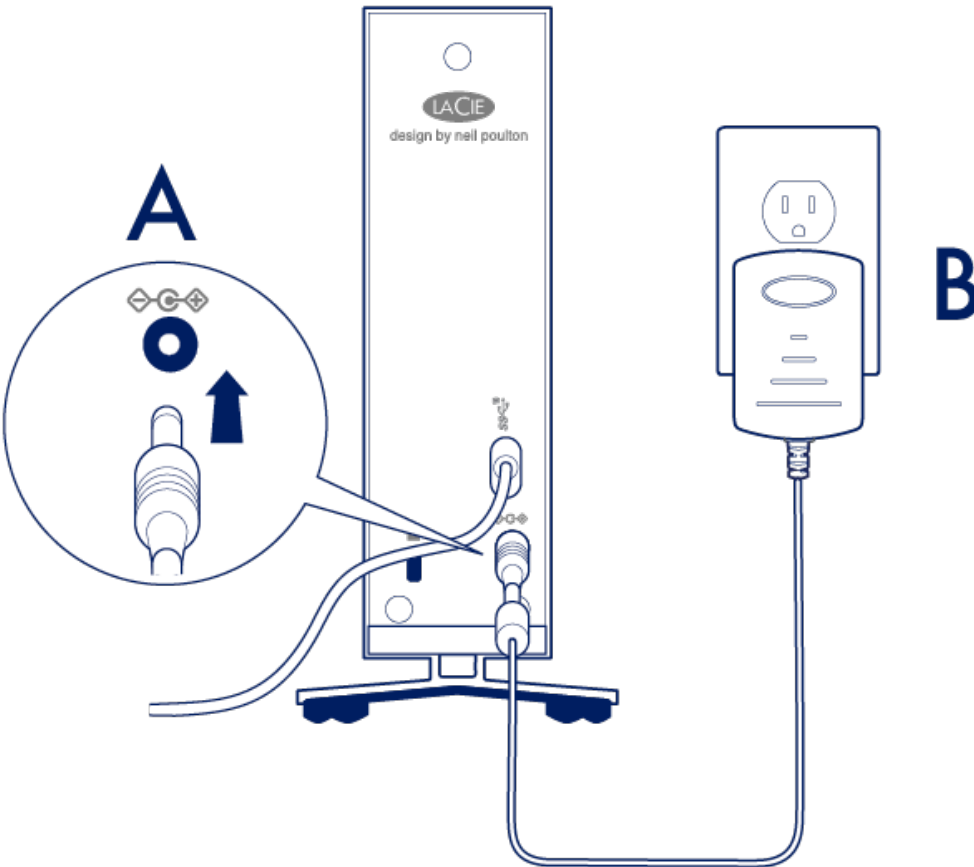
LaCie d2 Professional will power on automatically when it is connected to a computer that is turned on and a live power outlet.

! Use only the power supply provided with your d2 Professional. Power supplies from third-party devices and other LaCie products can damage your d2 Professional.

1. Press the release tab on the universal power supply to unlock the safety cover. Slide the cover back to remove it.
2. Place the adapter plug for your location into the channel on the power supply. Slide it forward to lock it in place.



3. Connect the power cable to the power input on d2 Professional, and then connect the power supply to a live power outlet.



STEP 3 - Set up LaCie d2 Professional

The setup process lets you:

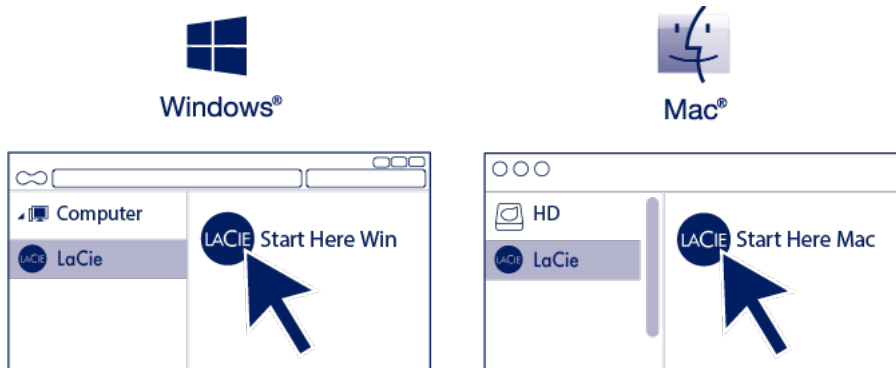
Register your device

Get the most from your device with easy access to information and support.

Install Toolkit

Manage backup plans, mirror folders, and more.

1. Using a file manager such as File Explorer or Finder, open LaCie d2 Professional and launch Start Here Win or Start Here Mac.



2. Follow the onscreen instructions.



Your computer must be connected to the internet to install Toolkit.

Learn more about Toolkit

Toolkit provides useful tools that let you easily:

- Manage backup plans (Windows only).
- Create mirror folders.
- Optimize disk format for use with a specific operating system.

For details on Toolkit features, see the [Toolkit user manual](#).

Storage format

LaCie d2 Professional is delivered preformatted as exFAT for compatibility with both Windows and Mac computers. If you use the drive with only one type of computer, you can optimize file copy performance by formatting the drive in the native file system for your operating system. Choose one of the following methods to optimize your drive:

- Use Toolkit to optimize disk format. See the [Toolkit user manual](#) for details.
- Manually format your drive. See [Optional Formatting and Partitioning](#) for details.

Disconnecting the hard drive

In order to avoid file system corruption, it's important to unmount your hard drive's volumes before disconnecting the interface cable. See [Safely Remove LaCie d2 Professional From Your Computer](#) for details.

Works with iPad USB-C

Your LaCie storage devices can be used with higher-end iPads. This is a great option for moving files between computers, cloud services and external storage. The iPad is also a perfect mobile editing station for importing media to more advanced imaging and video apps.

See [External Storage and iPadOS](#) for details on the following:

- Connecting Storage to Compatible iPads
- Available Actions
- Selecting Multiple Items
- Accessing Storage Devices in an App
- Supported External Storage Devices and USB Hubs
- External Storage Performance on iPad Versus a Computer
- Thunderbolt Storage Devices
- Battery Use
- Ejecting
- Storage Formats
- Password Protection
- Toolkit and First Use Connections

Safely Remove Device From Your Computer

Always eject a storage drive from your computer before physically disconnecting it. Your computer must perform filing and housekeeping operations on the drive before it is removed. Therefore, if you unplug the drive without using the operating system's software, your files can become corrupt or damaged.

Windows

Use the Safely Remove tool to eject a device.

1. Click the Safely Remove Hardware icon in your Windows System Tray to view the devices you can eject.
2. If you don't see the Safely Remove Hardware icon, click the Show hidden icons arrow in the system tray to display all icons in the notification area.
3. In the list of devices, choose the device you want to eject. Windows displays a notification when it is safe to remove the device.
4. Disconnect the device from the computer.

Mac

There are several ways you can eject your device from a Mac. See below for two options.

Eject via Finder window

1. Open a Finder window.
2. On the sidebar, go to Devices and locate the drive you want to eject. Click the eject symbol to the right of the drive name.
3. Once the device disappears from the sidebar or, the Finder window closes, you can disconnect the interface cable from your Mac.

Eject via Desktop

1. Select the desktop icon for your device and drag it to the Trash.
2. When the device icon is no longer visible on your desktop, you can physically disconnect the device from your Mac.

Optional Formatting and Partitioning

Your device is preformatted exFAT (Extended File Allocation Table) for compatibility with both Mac and Windows computers.

Choosing a file system format

When choosing a file system format, consider whether **compatibility** or **performance** is more important in your everyday use of the drive.

- **Compatibility**—You need a cross-platform format because you connect your drive to both PCs and Macs.
- **Performance**—You connect your drive with only one type of computer, so you can optimize file copy performance by formatting the drive in the native file system for your computer operating system.

Compatibility with both Windows and Macs

exFAT is a lightweight file system compatible with all versions of Windows and modern versions of macOS. If you use your drive with both PCs and Macs, format your drive in exFAT. While exFAT offers cross-platform access to both computers, keep in mind the following:

- exFAT is not compatible or recommended for built-in backup utilities such as File History (Windows) and Time Machine (macOS). If you want to use one of these backup utilities, you should format the drive in the native file system for the computer running the utility.
- exFAT is not a journaled file system, which means it can be more susceptible to data corruption when errors occur or the drive is not disconnected properly from the computer.

Optimized performance for Windows

NTFS (New Technology File System) is a proprietary journaling file system for Windows. macOS can read NTFS volumes, but it can't natively write to them. This means your Mac can copy files from an NTFS-formatted drive, but it can't add files to or remove files from the drive. If you need more versatility than this one-way transfer with Macs, consider exFAT.

Optimized performance for macOS

Apple offers two proprietary file systems.

Mac OS Extended (also known as Hierarchical File System Plus or HFS+) is an Apple file system used since 1998 for mechanical and hybrid internal drives. macOS Sierra (version 10.12) and earlier use HFS+ by

default.

APFS (Apple File System) is an Apple file system optimized for solid state drives (SSDs) and flash-based storage systems, though it also works with hard disk drives (HDDs). It was first introduced with the release of macOS High Sierra (version 10.13). APFS can only be read by Macs running High Sierra or later.

When choosing between Apple file systems, consider the following:

- Windows cannot natively read or write to APFS or HFS+ volumes. If you need cross-platform compatibility, you should format the drive in exFAT.
- If you intend to use your drive with Time Machine:
 - The default format for macOS Big Sur (version 11) and later is APFS.
 - The default format for macOS Catalina (version 10.15) and earlier is HFS+.
- If you intend to use your drive to move files between Macs running older OS versions, consider formatting your drive in HFS+ rather than APFS.
- macOS file systems and Android: Formatting your drive for macOS may not be supported with connections to Android mobile devices.

Learn more

For additional considerations when choosing a file system format, see [File System Format Comparisons](#).

Formatting instructions

For instructions on formatting your drive, see [How to format your drive](#).

Frequently Asked Questions

For help setting up and using your LaCie hard drive, review the frequently asked questions below. For additional support resources, go to www.lacie.com/support/d2-pro.

Hard drive icon

[Why does the hard drive icon not appear on my desktop \(Mac\)?](#)

[Is your Finder configured to hide hard drives on the desktop?](#)

Go to Finder and then check **Preferences > General tab > Show these items on the desktop**. Confirm that **Hard Disks** is selected.

[Is your hard drive mounting in the operating system?](#)

Open Disk Utility at **Go > Utilities > Disk Utility**. If the hard drive is listed in the left-hand column, check your Finder preferences to see why it is not displayed on the desktop (review the question above).

[Does your computer's configuration meet the minimum system requirements for use with this hard drive?](#)

Review the minimum system requirements [here](#).

[Did you follow the correct installation steps for your operating system?](#)

Review the installation steps in [Getting Connected](#).

[Why does the hard drive icon not appear in Computer \(Windows\)?](#)

[Is the hard drive listed in Device Manager?](#)

All drives appear in at least one place in Device Manager.

Type Device Manager in Search to launch it. Look in the Disk Drives section and, if necessary, click the Plus (+) icon to view the full list of devices. If you're uncertain that your drive is listed, safely unplug it and then reconnect it. The entry that changes is your LaCie hard drive.

Is your hard drive listed next to an unusual icon?

Windows Device Manager usually provides information about failures with peripherals. While the Device Manager can assist with troubleshooting most problems, it may not display the exact cause or provide a precise solution.

An unusual icon next to the hard drive can reveal a problem. For example, instead of the normal icon based on the type of device, it has an exclamation point, question mark or an X. Right click this icon and then choose [Properties](#). The General tab provides a potential reason why the device is not working as expected.

File transfers

Why are my file transfers slow?

Are both ends of the USB cable firmly attached?

Review troubleshooting tips for cable connections below:

- Check both ends of the USB cable and make sure that they are fully seated in their respective ports.
- Try disconnecting the cable, waiting 10 seconds, and then reconnecting it.
- Try a different USB cable.

Is the hard drive connected to a Hi-Speed USB 2.0 port on your computer or hub?

If your hard drive is connected to a Hi-Speed 2.0 port or hub, the inferior performance is normal. LaCie d2 Professional performance will improve when it is connected to a USB 3.1 port or a SuperSpeed USB 3.0 port. Otherwise, the device operates at slower USB transfer rates.

Are there other USB devices connected to the same port or hub?

Disconnect other USB devices and see if the hard drive's performance improves.

File transfer error messages

Why did I get an error message telling me that the drive has been disconnected when coming out of sleep mode?

Ignore this message since the drive remounts on the desktop despite the pop-up. LaCie drives conserve power by spinning down when you set your computer to sleep mode. When the computer awakes from sleep mode, the drive may not have enough time to spin up, causing the pop-up to appear.

[Why did I get an “Error -50” message while copying to a FAT32 volume?](#)

When copying files or folders from a computer to a FAT32 volume, certain characters in the names cannot be copied. These characters include, but are not limited to: ? < > / \ :

Check your files and folders to ensure that these characters are not in the names.

If this is a recurring problem or you cannot find files with incompatible characters, consider reformatting the drive to NTFS (Windows users) or HFS+ (Mac users). See [Optional Formatting and Partitioning](#).

Using a USB hub for USB devices

[Can I use my hard drive with a USB hub?](#)

Yes, the hard drive can be connected to a USB hub. If you use a hub and encounter detection problems, slower than normal transfer rates, random disconnection from your computer or other unusual issues, try connecting the hard drive directly to the computer's USB port.

Provided USB cables

[Can I use my hard drive with a longer cable?](#)

Yes, provided it is certified according to USB standards. However, LaCie recommends using the cable shipped with your hard drive for the best results. If you use a longer cable and experience problems with detection, transfer rates or disconnection, use the original cable included with your hard drive.

USB 3.0 ports

[Will my hard drive's USB 3.1 Gen 1 port work with my computer's USB 3.0 port?](#)

Yes, the device is compatible with USB 3.0 ports, however, the product does not include a cable with a USB Type A connector. Transfer rates are much slower with USB 3.0.

Regulatory Compliance

FCC Declaration of Conformance

This device complies with Part 15 of the FCC Rules. Operation is subject to the following two conditions: (1) this device may not cause harmful interference, and (2) this device must accept any interference received, including interference that may cause undesired operation.

FCC Class A Information

This equipment has been tested and found to comply with the limits for a Class A digital device, pursuant to Part 15 of the FCC Rules. These limits are designed to provide reasonable protection against harmful interference in a residential installation. This equipment generates, uses and can radiate radio frequency energy and, if not installed and used in accordance with the instructions, may cause harmful interference to radio communications. However, there is no guarantee that interference will not occur in a particular installation.

If this equipment does cause harmful interference to radio or television reception, which can be determined by turning the equipment off and on, the user is encouraged to try to correct the interference by one of the following measures:

- Reorient or relocate the receiving antenna.
- Increase the separation between the equipment and receiver.
- Connect the equipment into an outlet on a circuit different from that to which the receiver is connected.
- Consult the dealer or an experienced radio/TV technician for help.

This device complies with Part 15 of the FCC Rules. Operation is subject to the following two conditions: (1) This device may not cause harmful interference, and (2) this device must accept any interference received, including interference that may cause undesired operation.

FCC Caution

Any changes or modifications not expressly approved by the party responsible for compliance could void the user's authority to operate this equipment.

Important Note: FCC Radiation Exposure Statement

This equipment complies with FCC radiation exposure limits set forth for an uncontrolled environment. This

equipment should be installed and operated with minimum distance 20cm between the radiator and your body. This transmitter must not be co-located or operating in conjunction with any other antenna or transmitter. The availability of some specific channels and/or operational frequency bands are country dependent and are firmware programmed at the factory to match the intended destination. The firmware setting is not accessible by the end user.

China/Taiwan RoHS

China RoHS 2



China RoHS 2 refers to the Ministry of Industry and Information Technology Order No. 32, effective July 1, 2016, titled Management Methods for the Restriction of the Use of Hazardous Substances in Electrical and Electronic Products. To comply with China RoHS 2, we determined this product's Environmental Protection Use Period (EPUP) to be 20 years in accordance with the

, SJT 11364-2014.

中国 RoHS 2 是指 2016 年 7 月 1 日起施行的工业和信息化部令第 32 号“电力电子产品限制使用有害物质管理办法”。为了符合中国 RoHS 2 的要求，我们根据“电子电气产品有害物质限制使用标识”(SJT 11364-2014) 确定本产品的环保使用期 (EPUP) 为 20 年。

| 部件名称 Part Name | 有害物质 Hazardous Substances | | | | | |
|---|------------------------------|-----------|-----------|----------------------------|---------------|-----------------|
| | 铅 (Pb) | 汞 (Hg) | 镉 (Cd) | 六价铬 (Cr ⁺⁶) | 多溴联苯 (PBB) | 多溴二苯醚 (PBDE) |
| 硬盘驱动器 HDD | X | ○ | ○ | ○ | ○ | ○ |
| 外接硬盘印刷电路 板 Bridge PCBA | X | ○ | ○ | ○ | ○ | ○ |
| 电源 (如果提供) Power Supply (if provided) | X | ○ | ○ | ○ | ○ | ○ |

| | | | | | | |
|--|---|---|---|---|---|---|
| 接口电缆 (如果提供) Interface cable (if provided) | X | O | O | O | O | O |
|--|---|---|---|---|---|---|

| | | | | | | |
|---|---|---|---|---|---|---|
| 其他外壳组件 Other enclosure components | O | O | O | O | O | O |
|---|---|---|---|---|---|---|

本表格依据 SJ/T 11364 的规定编制。

This table is prepared in accordance with the provisions of SJ/T 11364-2014

O : 表示该有害物质在该部件所有均质材料中的含量均在 GB/T 26572 规定的限量要求以下。

O : Indicates that the hazardous substance contained in all of the homogeneous materials for this part is below the limit requirement of GB/T26572.

X : 表示该有害物质至少在该部件的某一均质材料中的含量超出 GB/T 26572 规定的限量要求。

X : Indicates that the hazardous substance contained in at least one of the homogeneous materials used for this part is above the limit requirement of GB/T26572.

Taiwan RoHS

Taiwan RoHS refers to the Taiwan Bureau of Standards, Metrology and Inspection's (BSMI's) requirements in standard CNS 15663, Guidance to reduction of the restricted chemical substances in electrical and electronic equipment. Beginning on January 1, 2018, Seagate products must comply with the "Marking of presence" requirements in Section 5 of CNS 15663. This product is Taiwan RoHS compliant.

The following table meets the Section 5 "Marking of presence" requirements.

台灣RoHS是指台灣標準局計量檢驗局(BSMI)對標準CNS15663要求的減排電子電氣設備限用化學物質指引。從2018年1月1日起, Seagate 產品必須符合CNS15663第5節「含有標示」要求。本產品符合台灣RoHS。下表符合第5節「含有標示」要求。

產品名稱：外接式磁碟陣列，型號：LRDMU03
Product Name: LaCie d2 Professional, Model: LRDMU03

限用物質及其化學符號
Restricted Substance and its chemical symbol

單元
Unit

| | 鉛 (Pb) | 汞 (Hg) | 鎘 (Cd) | 六價鉻 (Cr ⁺⁶) | 多溴聯苯 (PBB) | 多溴二苯醚 (PBDE) |
|--|-----------|-----------|-----------|----------------------------|---------------|-----------------|
| 硬盘驱动器 HDD | — | ○ | ○ | ○ | ○ | ○ |
| 外接硬盘印刷電路 板 Bridge PCBA | — | ○ | ○ | ○ | ○ | ○ |
| 電源 (如果提供) Power Supply (if provided) | — | ○ | ○ | ○ | ○ | ○ |
| 接口電纜 (如果提供) Interface cable (if provided) | — | ○ | ○ | ○ | ○ | ○ |
| 其他外殼組件 Other enclosure components | ○ | ○ | ○ | ○ | ○ | ○ |

備考 1. "○" 係指該項限用物質之百分比含量未超出百分比含量基準值。

Note 1. "O" indicates that the percentage content of the restricted substance does not exceed the percentage of reference value of presence.

備考 2. "—" 係指該項限用物質為排除項目。

Note 2. "—" indicates that the restricted substance corresponds to the exemption.

Industry Canada

This device complies with RSS-210 of the Industry Canada Rules. Operation is subject to the following two conditions: (1) This device may not cause harmful interference, and (2) this device must accept any interference received, including interference that may cause undesired operation.

Ce dispositif est conforme à la norme CNR-210 d'Industrie Canada applicable aux appareils radio exempts de licence. Son fonctionnement est sujet aux deux conditions suivantes: (1) le dispositif ne doit pas produire de brouillage préjudiciable, et (2) ce dispositif doit accepter tout brouillage reçu, y compris un brouillage susceptible de provoquer un fonctionnement indésirable.

Important Note for mobile device use

Radiation Exposure Statement: This equipment complies with IC radiation exposure limits set forth for an uncontrolled environment. This equipment should be installed and operated with minimum distance 20cm between the radiator & your body.

Note Importante pour l'utilisation de dispositifs mobiles

Déclaration d'exposition aux radiations:

Cet équipement est conforme aux limites d'exposition aux rayonnements IC établies pour un environnement non contrôlé. Cet équipement doit être installé et utilisé avec un minimum de 20 cm de distance entre la source de rayonnement et votre corps.

Europe – EU Declaration of Conformity

This device complies with the essential requirements of the EMC Directive 2004/108/EC. The following test methods have been applied in order to prove presumption of conformity with the essential requirements of the EMC Directive 2004/108/EC:

- EN 60950-1:2006/AC:2011: Information technology equipment - Safety - Part 1: General requirements
- EN 55022: 2010/AC:2011: Information technology equipment - Radio disturbance characteristics
 - Limits and methods of measurement
- EN 55024: 2010: Information technology equipment - Immunity characteristics - Limits and methods of measurement

| | |
|----------------------|--|
| Česky [Czech] | LaCie tímto prohlašuje, že tento direct attached storage device je ve shodě se základními požadavky a dalšími příslušnými ustanoveními směrnice 2004/5/ES. |
| Dansk [Danish] | Undertegnede LaCie erklærer herved, at følgende udstyr direct attached storage device overholder de væsentlige krav og øvrige relevante krav i direktiv 2004/5/EF. |
| Deutsch [German] | Hiermit erklärt LaCie, dass sich das Gerät direct attached storage device in Übereinstimmung mit den grundlegenden Anforderungen und den übrigen einschlägigen Bestimmungen der Richtlinie 2004/5/EG befindet. |
| Eesti [Estonian] | Käesolevaga kinnitab LaCie seadme direct attached storage device vastavust direktiivi 2004/5/EÜ põhinõuetele ja nimetatud direktiivist tulenevatele teistele asjakohastele sätetele. |
| English | Hereby, LaCie, declares that this direct attached storage device is in compliance with the essential requirements and other relevant provisions of Directive 2004/5/EC. |
| Español [Spanish] | Por medio de la presente LaCie declara que el direct attached storage device cumple con los requisitos esenciales y cualesquiera otras disposiciones aplicables o exigibles de la Directiva 2004/5/CE. |

| | |
|---------------------------|--|
| Ελληνική [Greek] | ΜΕ ΤΗΝ ΠΑΡΟΥΣ LaCie ΔΗΛΩΝΕΙ direct attached storage device ΣΥΜΜΟΡΦΩΝΕΤΑΙ ΠΡΟΣ ΤΙΣ ΟΥΣΙΩΔΕΙΣ ΑΠΑΙΤΗΣΕΙΣ ΚΑΙ ΤΙΣ ΛΟΙΠΕΣ ΣΧΕΤΙΚΕΣ ΔΙΑΤΑΞΕΙΣ ΤΗΣ ΟΔΗΓΙΑΣ 2004/5/ΕΚ. |
| Français [French] | Par la présente LaCie déclare que l'appareil direct attached storage device est conforme aux exigences essentielles et aux autres dispositions pertinentes de la directive 2004/5/CE. |
| Italiano [Italian] | Con la presente LaCie dichiara che questo direct attached storage device è conforme ai requisiti essenziali ed alle altre disposizioni pertinenti stabilite dalla direttiva 2004/5/CE. |
| Latviski [Latvian] | Ar šo LaCie deklarē, ka direct attached storage device atbilst Direktīvas 2004/104/EK būtiskajām prasībām un citiem ar to saistītajiem noteikumiem. |
| Lietuvių [Lithuanian] | Šiuo LaCie deklaruoja, kad šis direct attached storage device atitinka esminius reikalavimus ir kitas 2004/104/EB Direktyvos nuostatas. |
| Nederlands [Dutch] | Hierbij verklaart LaCie dat het toestel direct attached storage device in overeenstemming is met de essentiële eisen en de andere relevante bepalingen van richtlijn 2004/104/EG. |
| Malti [Maltese] | Hawnhekk, LaCie, jiddikjara li dan direct attached storage device jikkonforma mal-ħtiġijiet essenzjali u ma provvedimenti oħrajn rilevanti li hemm fid-Dirrettiva 2004/104/EC. |
| Magyar [Hungarian] | Alulírott, LaCie nyilatkozom, hogy a direct attached storage device megfelel a vonatkozó alapvető követelményeknek és az 2004/104/EC irányelv egyéb előírásainak. |
| Polski [Polish] | Niniejszym LaCie oświadcza, że direct attached storage device jest zgodny z zasadniczymi wymogami oraz pozostałymi stosownymi postanowieniami Dyrektywy 2004/104/EC. |
| Português [Portuguese] | LaCie declara que este direct attached storage device está conforme com os requisitos essenciais e outras disposições da Directiva 2004/104/CE. |
| Slovensko [Slovenian] | LaCie izjavlja, da je at direct attached storage device v skladu z bistvenimi zahtevami in ostalimi relevantnimi določili direktive 2004/104/ES. |
| Slovensky [Slovak] | LaCie týmto vyhlasuje, že direct attached storage device spĺňa základné požiadavky a všetky príslušné ustanovenia Smernice 2004/104/ES. |
| Suomi [Finnish] | LaCie vakuuttaa täten että direct attached storage device tyyppinen laite on direktiivin 2004/104/EY oleellisten vaatimusten ja sitä koskevien direktiivin muiden ehtojen mukainen. |
| Svenska [Swedish] | Härmed intygar LaCie att denna direct attached storage device står i överensstämmelse med de väsentliga egenskapskrav och övriga relevanta bestämmelser som framgår av direktiv 2004/104/EG. |

Power source



Caution: Use the product with the provided power cable only.



Note: To protect your data, always follow the safe removal procedures for your operating system when disconnecting your product.