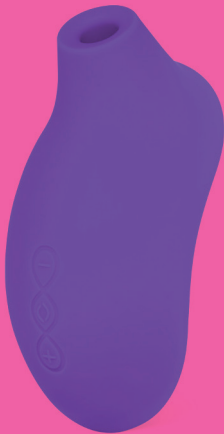


LELO

SONA™ 2 Sonic Clitoral Massager

USER MANUAL



**Pure euphoria is toe-curling orgasms and sonic
power at the touch of a button.
Experiment wisely, often, and with care.**

Congratulations on acquiring SONA™ 2. Before getting more closely acquainted with it, please take a moment to look through this user manual.

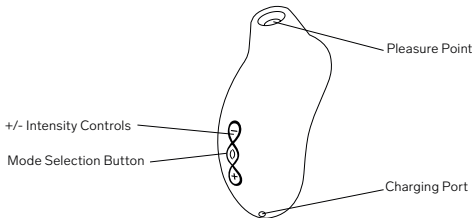
IMPORTANT: Your pleasure object may have been locked for transportation.

To unlock, simply connect the charger or press and hold + and – buttons for 3 seconds.

GETTING STARTED

- Charge your SONA™ 2 for a maximum of 2 hours, or until the LED lights emit a steady glow.
- Unlock by pressing and holding the + and - buttons simultaneously for 3 seconds until the light turns on.
- Press + button to turn on; press again to increase vibration strength.
- Press () button to switch between the 12 vibration patterns.
- Press – button to reduce vibration strength.
- Press and hold () button to turn off.

GETTING TO KNOW YOUR SONA™ 2



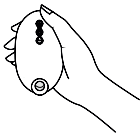
CRUISE CONTROL (For SONA™ 2 Cruise only)

Cruise Control is a fully automatic function, not a setting that requires you to turn it on and off. Cruise Control is designed to detect any slowing motion of the motor and can boost the motor up again via PWM (Pulse Wave Modulation). In doing so, Cruise Control ensures that you enjoy consistent power and intensity, even while SONA™ 2 is pressed firmly against your body.

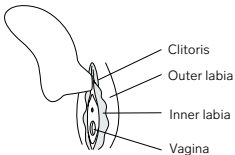
Cruise Control™
TECHNOLOGY

USING YOUR SONA™ 2

- How to hold



- Where to place on the body



Tip: Please apply a liberal amount of LELO Personal Moisturizer to your body and SONA™ 2 before and during use.



LISTEN TO YOUR BODY

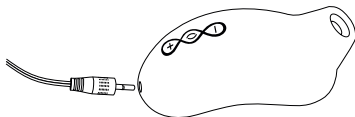
Begin by placing the mouth of the device on the clitoris, or next to the clitoris if the direct contact is too intense for you. Stimulate your clitoris as long as it doesn't feel too sensitive. Your body will tell you what feels right. Feel free to take a break if the intensity becomes too great – there is no right way to reach an orgasm, there is only your way.

WATER PLAY TIPS

If you prefer to bring your SONATM 2 in the bath or the shower, please be mindful that water negates your body's natural lubrication, rendering your clitoris more sensitive and dry. You're also missing out on the benefits of using SONA™ 2 with a water-based lubricant which is our recommended method of usage.

CHARGING YOUR SONA™ 2

- Insert the DC plug into the DC port at the base of your SONA™ 2.
- Insert the main plug into a USB port.
- Charge your SONA™ 2 for a maximum of 2 hours, or until the LED lights emit a steady glow.
- When the battery is running low, the LED on your SONA™ 2 will emit a blinking white light.



Only use original chargers provided by LELO with your SONA™ 2.

CLEANING, STORAGE, AND SAFETY

- Using SONA™ 2 with hand creams or silicone-based lubricants may make the silicone permanently tacky and ruin its texture irreversibly. Always use only water-based lubricants.
- SONA™ 2 is fully waterproof, making cleaning simple. Rinse and spray with LELO Toy Cleaner, then rinse again and allow to dry.
- Always clean your SONA™ 2 thoroughly before and after each use. You can wash the silicone with warm water and antibacterial soap, rinse with clean hot water and pat dry with a lint-free cloth or towel. Never use cleansers containing alcohol, petrol or acetone.
- For extra care, gently wipe the inside of the pleasure point with a cotton swab.
- Avoid leaving your SONA™ 2 in direct sunlight and NEVER expose it to extreme heat. Store your SONA™ 2 in a dust-free place and keep it away from products of other materials.

IMPORTANT: Children shall not play with the appliance. For adult use only. Those who may be pregnant, have a pacemaker, diabetes, phlebitis, thrombosis or any other condition, should consult with a medical professional regarding the risk of blood clots before using any personal massage product.

The appliances must only be supplied at SELV.

TROUBLESHOOTING

The LED on your SONA™ 2 does not pulse when the charger is connected:

- The battery is drained and will require several minutes to acknowledge that it is being charged.
- The charger is not properly connected. Check wall and DC sockets.

Your SONA™ 2 does not activate when the center button is pressed:

- The battery is empty. Recharge your SONA™ 2.
- The interface of your SONA™ 2 is locked. Hold down + and – for 5 seconds.

If you experience any other problems with your SONA™ 2 or if you have any questions regarding operation, please contact: **customercare@lelo.com**

SPECIFICATIONS

MATERIALS

Silicone, ABS

BODY COLORS

Purple, Cerise, Black

INTERFACE

3-button interface

SWITCH OFF

Automatic

FREQUENCY

75Hz

BATTERY

Li-ion 1050mAh 3.7V

CHARGE TIME

2.5h at 5.0V 750mA

USER TIME

Up to 2 hours

STANDBY TIME

Up to 90 days

SIZE

55.2 x 87.6 x 99.4mm

WEIGHT (ONLY PRODUCT)

135g

REGISTER WARRANTY

To activate your 1-Year Limited Warranty, register the number provided on the LELO Authenticity Card at LELO.COM/SUPPORT.

1-YEAR WARRANTY

LELO warrants this pleasure object for a period of ONE (1) YEAR, after the date of original purchase, against defects due to faulty workmanship or materials. The warranty covers working parts that affect the function of the pleasure object. It does NOT cover cosmetic deterioration caused by fair wear and tear or damage caused by accident, misuse or neglect. Any attempt to open or take apart the pleasure object (or its accessories) will void the warranty. If you discover a defect and notify LELO during the warranty period, LELO will, at its discretion, replace the pleasure object free of charge. Claims under warranty must be supported by reasonable evidence of the date of claim is within the warranty period. To validate your warranty, please keep your original purchase receipt together with these warranty conditions for the duration of the warranty period. To claim your warranty, you must log in to your account at LELO.COM then select the option to make a warranty claim. Shipping costs are non-refundable. This undertaking is in addition to consumer's statutory rights and does not affect those rights in any way.

DISPOSAL INFORMATION

Disposal of old electronic equipment (applicable in the EU and other European countries with separate waste collection systems):

The crossed-out dustbin symbol indicates that this pleasure object should not be treated as household waste, but rather be brought to the appropriate collection point for recycling of electrical and electronic equipment.



Disclaimer: Users of this product do so at their own risk. Neither LELO nor its retailers assume any responsibility or liability for the use of this product. Changes or modifications not expressly approved by the manufacturer could void the user's authority to operate the equipment.

Model may be changed for improvements without notice.

Any changes or modifications not expressly approved by the party responsible for compliance could void the user's authority to operate the equipment. This device complies with part 15 of the FCC Rules. Operation is subject to the following two conditions: (1) This device may not cause harmful interference, and (2) this device must accept any interference received, including interference that may cause undesired operation.

RF exposure statement: This equipment complies with FCC radiation exposure limits set forth for an uncontrolled environment. The device has been evaluated to meet general RF exposure requirement. The device can be used in portable exposure condition without restriction.

© 2019 LELOi AB. ALL RIGHTS RESERVED.

DESIGNED AND DEVELOPED BY LELO SWEDEN

MANUFACTURED FOR LELO IN CHINA

WEBSITE: WWW.LELO.COM

SUPPORT: CUSTOMERCARE@LELO.COM

www.lelo.com