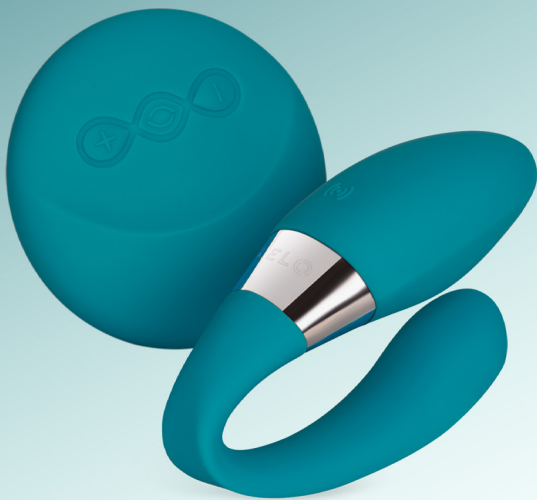


LELO



TIANI™ DUO
USER MANUAL

Intense, all-encompassing pleasure
should never be taken for granted.

Use it wisely, often and with care.

Congratulations on acquiring TIANI DUO. Before getting more closely acquainted with it, please take a moment to look through this user manual.

IMPORTANT: Your pleasure object has been locked for transportation. To unlock, simply connect the charger or see below.

SAFETY

This product should only be used by people aged 18 years and over. Persons with reduced physical, sensory, or mental capabilities, or lack of experience and knowledge of the device should only use the product if they have been given supervision or instruction concerning the use of the product in a safe way and understand the hazards involved. Minors shall not play with the product. Minors should not clean and/or use the product unsupervised.

COMPLIANCE STATEMENT

a. Please take note that changes or modifications not expressly approved by the party responsible for compliance could void the user's authority to operate the equipment.

This device complies with Part 15 of the FCC Rules. Operation is subject to the following two conditions:

- (1) This device may not cause harmful interference, and
- (2) This device must accept any interference received, including interference that may cause undesired operation.

b. This device complies with Industry Canada license-exempt RSS standard(s). Operation is subject to the following two conditions:

- (1) This device may not cause interference, and
- (2) This device must accept any interference, including interference that may cause undesired operation of the device.

c. This class B digital apparatus complies with Canadian ICES-003. This equipment complies with FCC/IC RSS-102 radiation exposure limits set forth for an uncontrolled environment. The device has been evaluated to meet general RF exposure requirements. The device can be used in portable exposure conditions without restriction.

GETTING STARTED

- Before first use, charge your TIANI DUO for 2 hours.

INSERTING BATTERIES IN REMOTE

- The battery cover on the remote should be loose when you first open your product. Lift it off and insert the batteries as shown in Diagram 1.
- Carefully place the cover on top of the battery compartment, ensuring that the ridges are aligned as shown in Diagram 2.

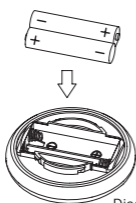


Diagram 1

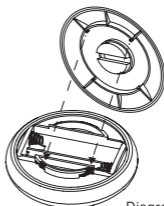


Diagram 2

- Once in place, insert the plastic key in the cover's slot and do a 10 degree twist clockwise to lock shut. To open, always use the key and make a 10 degree turn counterclockwise before replacing the batteries - using other tools such as coins may damage the surface of the remote (see Diagram 3).

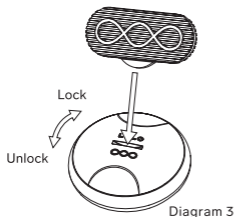
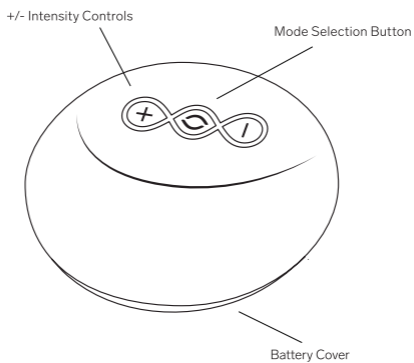
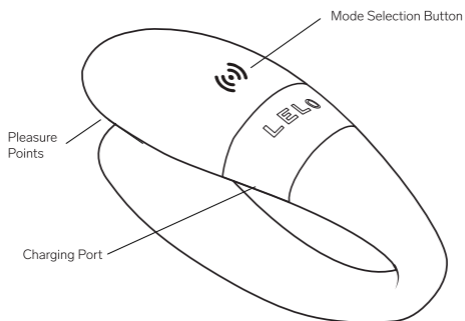


Diagram 3

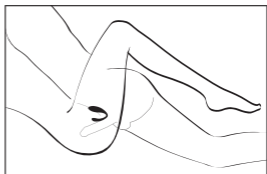
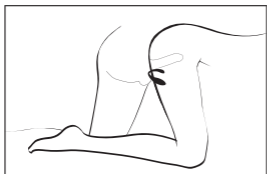
TIP: You may also use flattened palms on either side of the remote to push and twist the lid without using the key to lock and unlock.

Always ensure the remote is fastened shut before using in water.

GETTING TO KNOW YOUR TIANI DUO



USING TIANI DUO



USING TIANI DUO WITHOUT REMOTE

- Press **(⏻)** button to turn on. - Do not turn on the remote.
- Press **(⏻)** button again to turn on vibrations.
- Press **(⏻)** button to cycle through the vibration patterns which will be set to 100% intensity. - To alter intensity, you will have to turn on the remote.
- Press and hold **(⏻)** button to turn off.

USING THE REMOTE

- Unlock by pressing and holding the + and – buttons simultaneously for 3 seconds until the light turns on.
- Press **(⏻)** button on the product to turn it on.
- Press + button to turn on; press again to increase the vibration strength.
- Press **(⏻)** button to switch between the 8 vibration patterns.
- Press – button to reduce vibration strength.
- Press and hold – button to turn off.

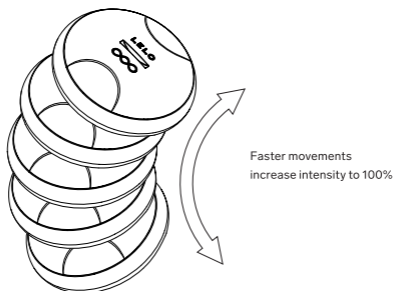
USING SENSEMOTION™ MODE 1

Turn on your remote by pressing the + button. Once wireless connection is established, the lights on the massager and remote will be illuminated. Your massager will now be operating in SenseMotion mode 1. You can intensify vibrations by tilting the remote. When the remote is moved from a horizontal to a vertical position, vibration strength will increase to maximum level.



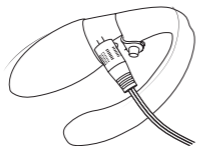
USING SENSEMOTION™ MODE 2

When in SenseMotion mode 1, press on your remote to change to SenseMotion mode 2. In this mode, you can alter or intensify vibrations by moving the remote in any direction. Faster movements increase the intensity of vibrations.



CHARGING YOUR TIANI DUO

- Insert the DC plug into the DC port at the bottom of your TIANI DUO.
- The LED on the interface of your TIANI DUO will pulse to indicate it is charging.
- When it is fully charged (after c. 1.5 hours), the LED will emit a steady glow.
- When the battery is running low, the LED on your TIANI DUO will emit a blinking white light.



Only use original chargers provided by LELO with your TIANI DUO.

CLEANING, STORAGE, AND SAFETY

Using TIANI DUO with hand creams or silicone-based lubricants may make the silicone permanently tacky.

TIANI DUO is fully waterproof, making cleaning simple. Rinse and spray with LELO Toy Cleaner, then rinse again and allow to dry.

Always clean your TIANI DUO thoroughly before and after each use. You can wash the silicone with warm water and antibacterial soap, rinse with clean hot water, and pat dry with a lint-free cloth or towel. Never use cleansers containing alcohol, petrol, or acetone.

Avoid leaving your TIANI DUO in direct sunlight and NEVER expose it to extreme heat. Store your TIANI DUO in a dust-free place and keep it away from products of other materials.

The appliances must only be supplied at SELV.

TROUBLESHOOTING

The LED on your TIANI DUO does not pulse when the charger is connected:

- The battery is drained and will require several minutes to acknowledge that it is being charged.
- The charger is not properly connected. Check wall and DC sockets.

Your TIANI DUO does not activate when the center button is pressed:

- The battery is empty. Recharge your TIANI DUO.
- The interface of your TIANI DUO is locked. Hold down **+** and **-** for 5 seconds.

If you experience any other problems with your TIANI DUO or if you have any questions regarding operation, please contact: customercare@lelo.com

SPECIFICATIONS

MASSAGER

MATERIALS	Body-safe Silicone, ABS
BODY COLORS	Ocean Blue, Black
SWITCH OFF	Automatic
FREQUENCY	60Hz
BATTERY	Li-Ion 200mAh 3.7V
CHARGE TIME	2 hours at 5.0V 200mA
USER TIME	Up to 2 hours
STANDBY TIME	Up to 90 days
SIZE	90 x 45 x 30 mm / 3.5 x 1.8 x 12. in
WEIGHT (ONLY PRODUCT)	80 g / 0.17 lb
INTERFACE	1-button

REMOTE CONTROL

MATERIALS	Body-safe Silicone, ABS
SIZE	64 x 64 x 26 mm / 2.5 x 2.5 x 1.0 in
WEIGHT (ONLY PRODUCT)	30 g / 0.07 lb
BATTERY	2 AAA
INTERFACE	3-button

REGISTER WARRANTY

To activate your 1-Year Limited Warranty, register the number provided on the LELO Authenticity Card at **LELO.COM/SUPPORT**

1-YEAR WARRANTY

LELO warrants this pleasure object for a period of ONE (1) YEAR, after the date of original purchase, against defects due to faulty workmanship or materials. The warranty covers working parts that affect the function of the pleasure object. It does NOT cover cosmetic deterioration caused by fair wear and tear or damage caused by accident, misuse or neglect. Any attempt to open or take apart the pleasure object (or its accessories) will void the warranty. If you discover a defect and notify LELO during the warranty period, LELO will, at its discretion, replace the pleasure object free of charge. Claims under warranty must be supported by reasonable evidence of the date of claim is within the warranty period. To validate your warranty, please keep your original purchase receipt together with these warranty conditions for the duration of the warranty period.

To claim your warranty, you must log in to your account at LELO.COM then select the option to make a warranty claim. Shipping costs are non-refundable. This undertaking is in addition to the consumer's statutory rights and does not affect those rights in any way.

DISPOSAL INFORMATION

Disposal of old electronic equipment (applicable in the EU and other European countries with separate waste collection systems):

The crossed-out dustbin symbol indicates that this pleasure object should not be treated as household waste, but rather be brought to the appropriate collection point for the recycling of electrical and electronic equipment.



DISCLAIMER: Users of this product do so at their own risk. Neither LELO nor its retailers assume any responsibility or liability for the use of this product. Changes or modifications not expressly approved by the manufacturer could void the user's authority to operate the equipment.

Model may be changed for improvements without notice.

© 2022 LELOi AB. All rights reserved.

LELOi AB, Karlavägen 41, 114 31 Stockholm, Sweden.

Distributed in the US by: LELO Inc., 5799 Fontanoso Way, San Jose, CA 95138, USA.

Distributed in Australia by: LELO Oceania 6 Prohasky Street, Port Melbourne, VIC 3207, Australia.

Designed and developed by LELO Sweden.

Made in China.

US and International patents or patent applications apply to this product: visit www.lelo.com/ip

www.lelo.com