



## Dismantling information

The document is intended for use by end-of-life recyclers or treatment facilities. It provides the basic instructions for the disassembly of LG products to remove components and materials requiring selective treatment.

### Product Identification

Type of Product	Monitor
Model name	<b>32GS95UE-B</b> <b>32GS95UX</b>

Displays must be stored in accordance with the requirements stipulated in Appendix VIII (1) or (2) of Directive 2012/19/EU and must, amongst other things, be stored in a weatherproof manner. Containers with covers must be used when storing and transporting the Displays.

### Contents

- 1. Materials and components for Selective Treatment**
- 2. Tools Required**
- 3. Product Disassembly Process**
- 4. Disassembly of External enclosure**





# 1. Materials and components for Selective Treatment

Displays may contain hazardous substances like Pb and BFRs which are covered by exemptions under the RoHS directive. However, the majority is present in the PCB assembly. In order to reduce emissions as much as possible, a complete disposal of the old appliance is required. This treatment may only be performed in authorized handling plants.

Materials and components	Notes	Included	Location
Printed Circuit Boards (PCB) or Printed Circuit Assemblies (PCA)	With a surface greater than 10 square cm	O	
Batteries	For Remote control	X	
	Internal batteries	X	
Mercury containing components	display backlights	X	
Liquid Crystal Displays (LCD) with a surface greater than 100 square cm	Includes background illuminated displays with gas discharge lamps	O	
Capacitors / condensers (Containing PCB / PCT)		X	
Electrolytic Capacitors / Condensers measuring greater than 2.5 cm in diameter or height		O	
External electric cables cords	Power cord	O	
	Signal cable	O	
Gas Discharge Lamps		X	
Plastics containing Brominated Flame Retardants		X	
Components and waste containing asbestos		X	
Components, parts and materials containing refractory ceramic fibers		X	
Components, parts and materials containing radioactive substances		X	

## 2. Tools Required

List the type that would typically be used to disassemble the product to a point where components and materials requiring selective treatment can be removed.

Tool Description	Tool information
<b>Screw driver</b>	 
<b>Nipper</b>	
<b>Plastic Hera Jig</b>	

## **3. Product Disassembly Process**

### **1. Batteries**

No battery

# 3. Product Disassembly Process

## 2. PCBs and LCD Module

Detach Monitor head and stand by one-click button.



Set-up the Monitor head with the back-cover is pointing upside.

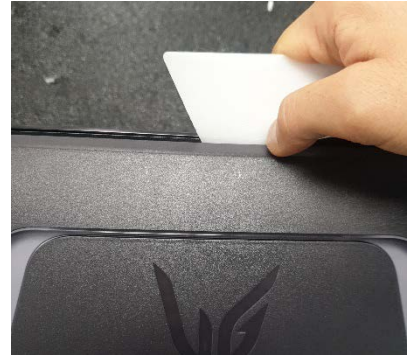


Remove screws 5ea to disassemble the back cover.  
(Tool set up : "+"tip screw driver)

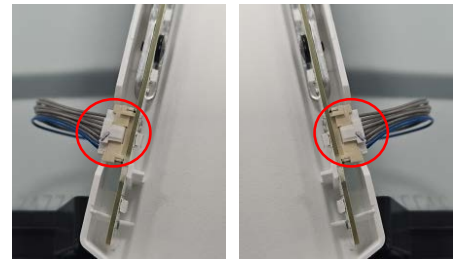
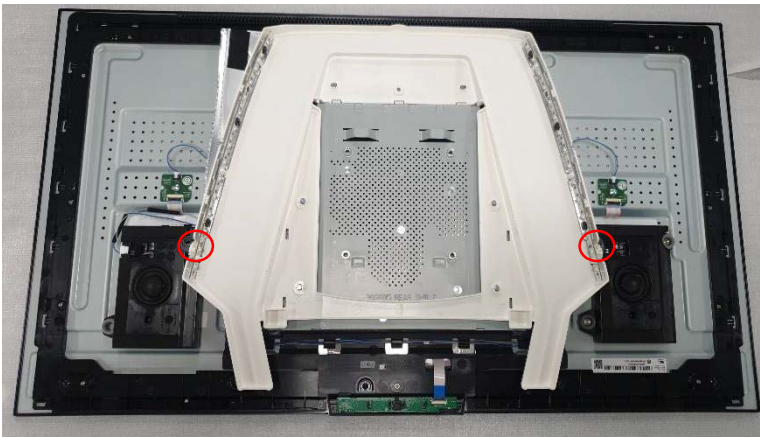


Remove the back cover.  
(Tool set up : Plastic HERA JIG)

Start Point



Disassembly the Lighting cable 2EA

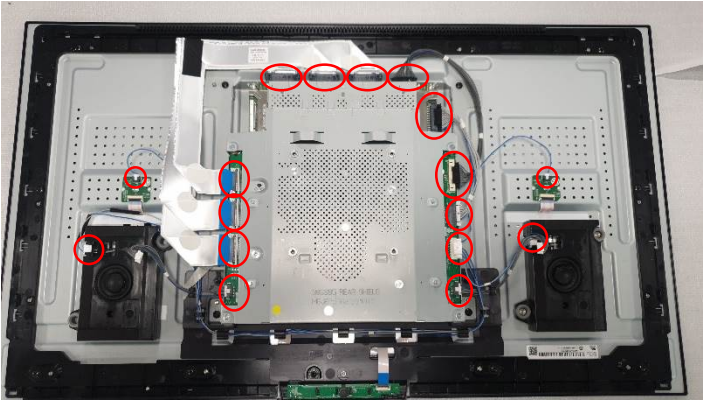


Disassembly the Lighting Cover

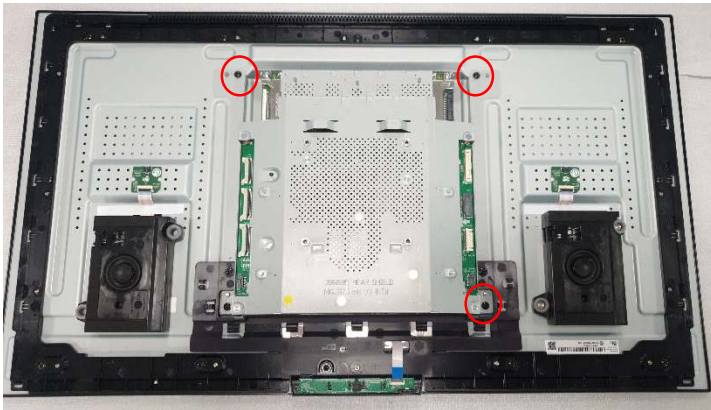




## Disassembly the Cables



## Remove the screw 4ea



## Remove the woofer 2ea



Remove the screw 16ea

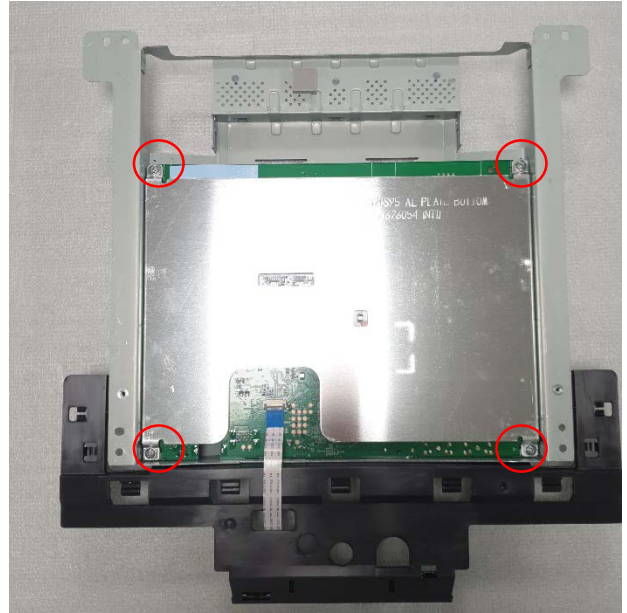
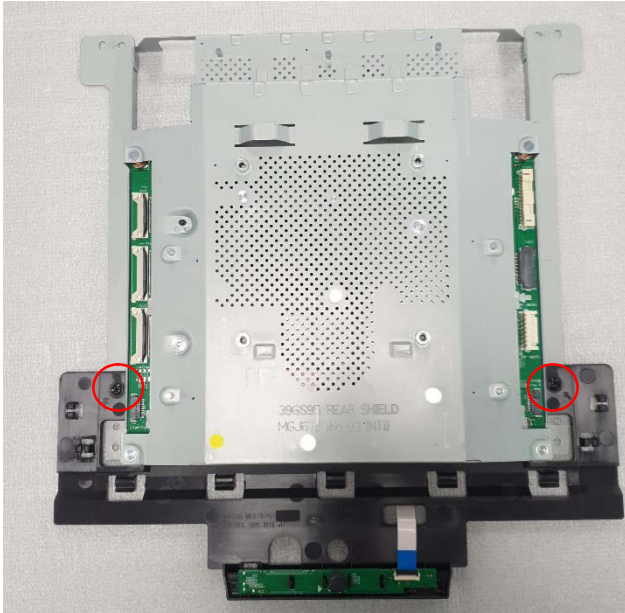


The picture of module.

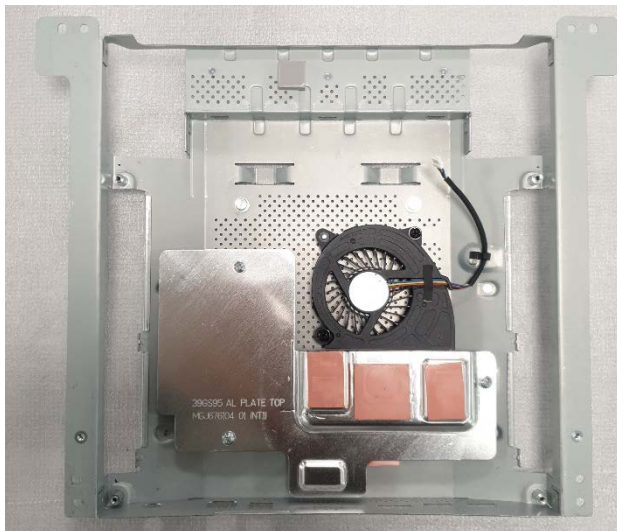




Remove screws 6ea and disassembly the control bracket and PCB



Remove screws 5ea and disassembly the FAN





## 3. Product Disassembly Process

### 3. Power cord and signal cables

A Power cord plugged into the back of the display can easily be removed by hand or cables are provided as de-attached from the product



Adapter, Power Cord, HDMI Cable, DP Cable, USB Cable

### 4. Capacitors > 25 mm

Capacitors > 25 mm are located in the power supply units and can be removed by nipper



## 4. Disassembly of External enclosure

Detach Monitor head and stand by one-click button.



Set-up the Monitor head with the back-cover is pointing upside.



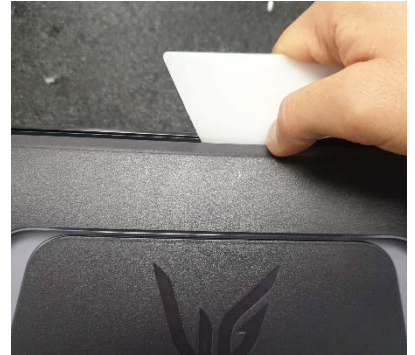
Remove screws 5ea to disassemble the back cover.  
(Tool set up : "+"tip screw driver)



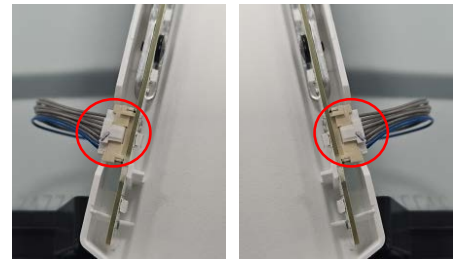
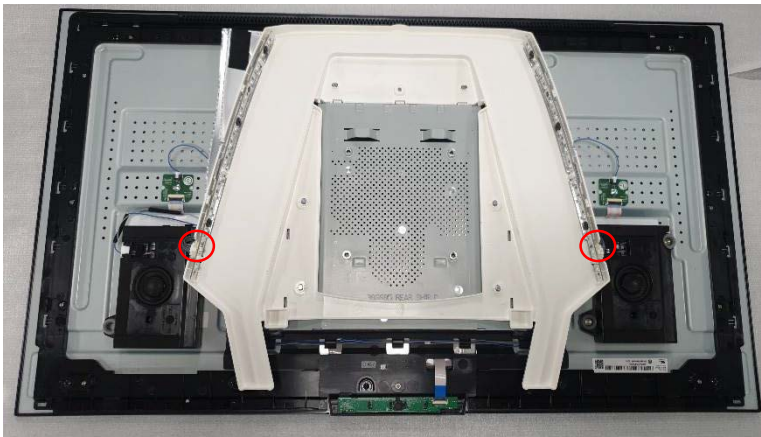


Remove the back cover.  
(Tool set up : Plastic HERA JIG)

Start Point



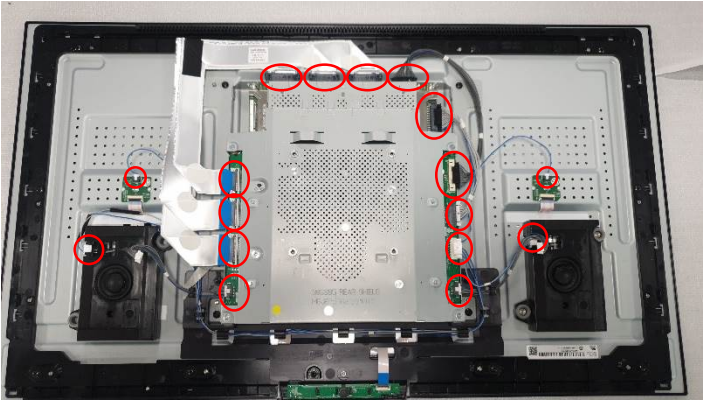
Disassembly the Lighting cable 2EA



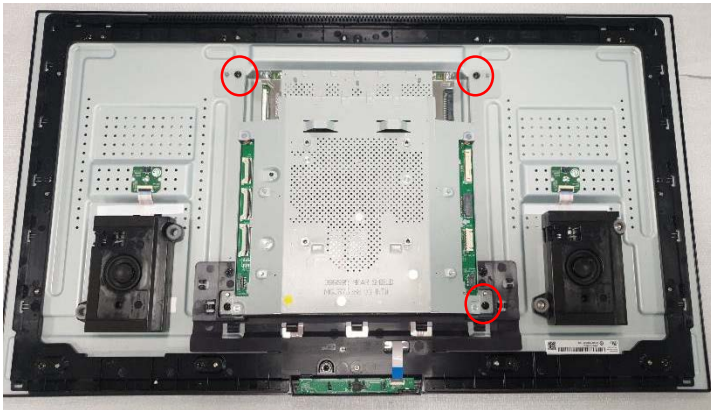
Disassembly the Lighting Cover



## Disassembly the Cables



## Remove the screw 4ea



## Remove the woofer 2ea

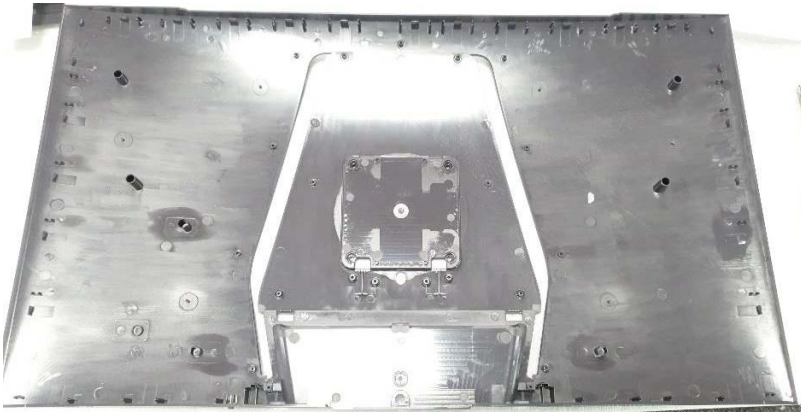
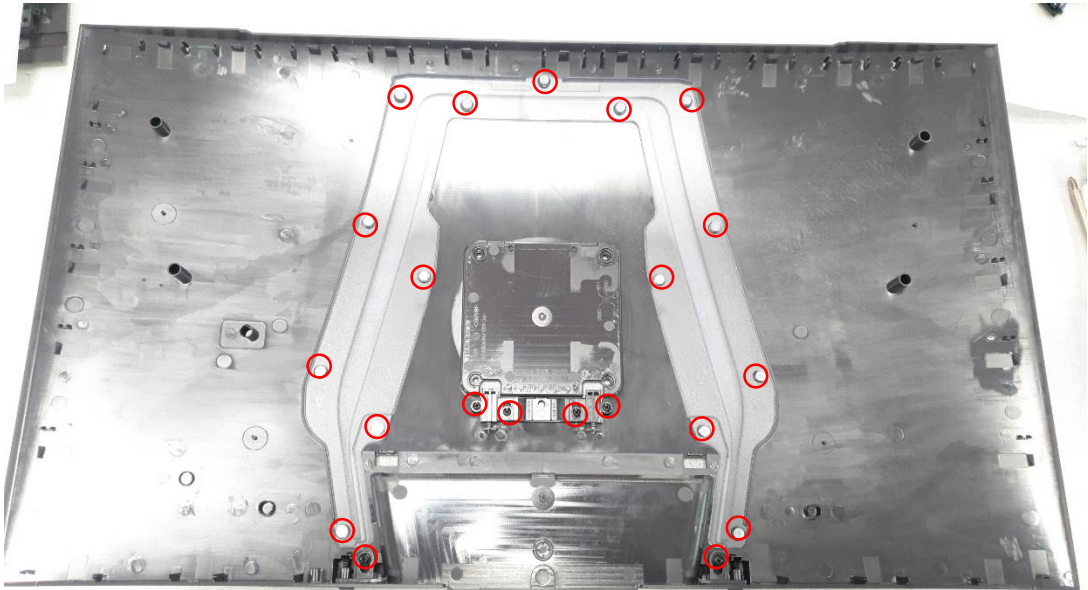




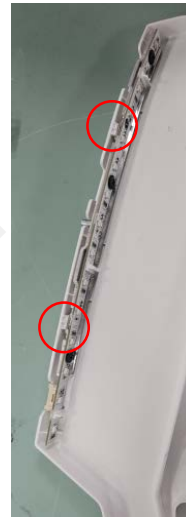
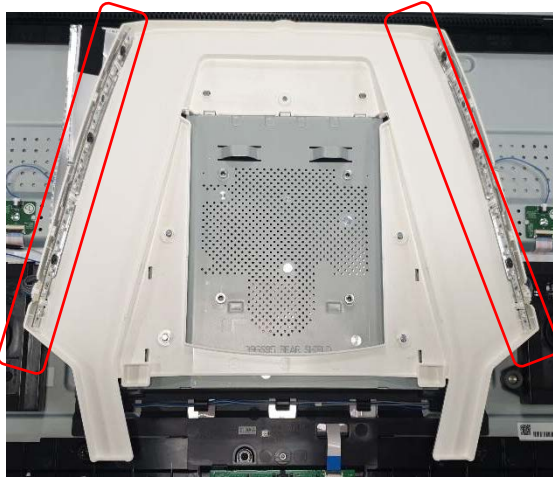
The picture of module.



Remove the screws 21ea



## Disassembly the LED PCB Ass'y



## Remove the screws 3ea

