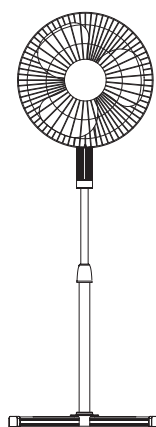




OWNER'S MANUAL

16" Stand Fan
Model: FS40-19M



READ AND SAVE THESE INSTRUCTIONS

Attention: Pictures in the IM are for reference only.

CAUTION

Read Rules for Safe Operation and Instructions Carefully.

WARNING

This appliance has a polarized plug (one blade is wider than the other). To reduce the risk of electric shock, this plug is intended to fit in a polarized outlet only one way. If plug does not fit fully in the outlet, reverse the plug. If it still does not fit, contact a qualified electrician. Do not attempt to defeat this safely feature.

RULES FOR SAFE OPERATION

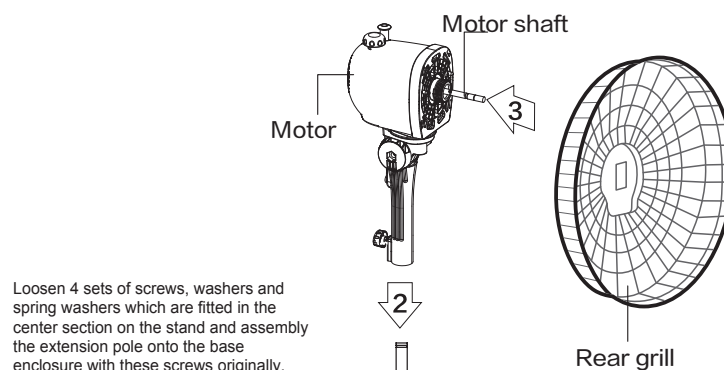
1. Never insert fingers, pencils, or any other object through the grille when fan is running.
 2. Disconnect fan when moving from one location to another.
 3. Disconnect fan when removing grilles for cleaning.
 4. Be sure fan is on a stable surface when operating to avoid overturning.
 5. Do not use fan in window. Rain may create electrical hazard.
 6. Ensure that the fan is switched off from the supply mains before removing the grille.
- The rules about cord and plug as below:

1. This product employs overload protection (fuse). A blown fuse indicates an overload or short-circuit situation. If the fuse blows, unplug the product from the outlet. Replace the fuse as per the user servicing instructions (follow product marking for proper fuse rating) and check the products. If the replacement fuse blows, a short-circuit may be present and the product should be discarded or returned to an authorized service facility for examination and/or repair.
2. Do not operate any fan with a damaged cord or plug. Discard fan or return to an authorized service facility for examination and/or repair.
3. Do not run cord under carpeting. Do not cover cord with throw rugs, runners, or similar coverings. Do not route cord under furniture or appliances. Arrange cord away from traffic area and where it will be tripped over.

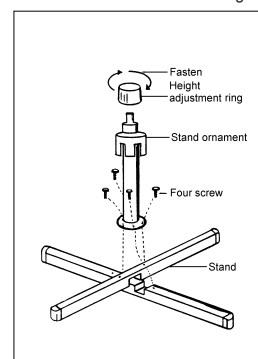
1

INSTALLATION INSTRUCTIONS

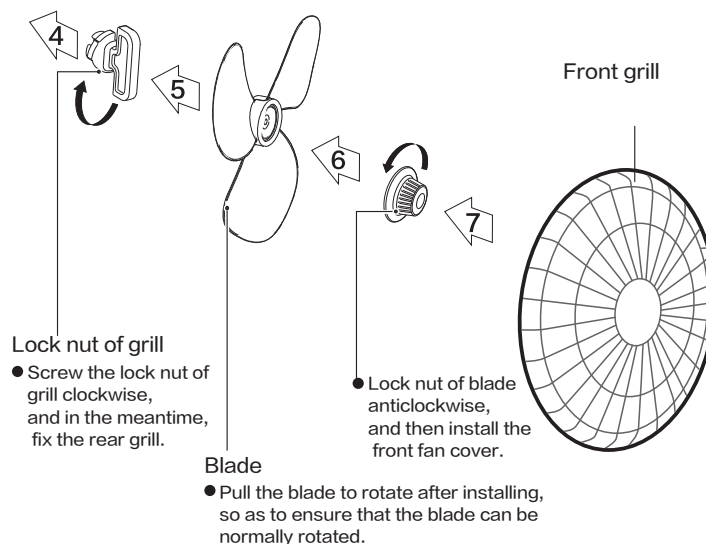
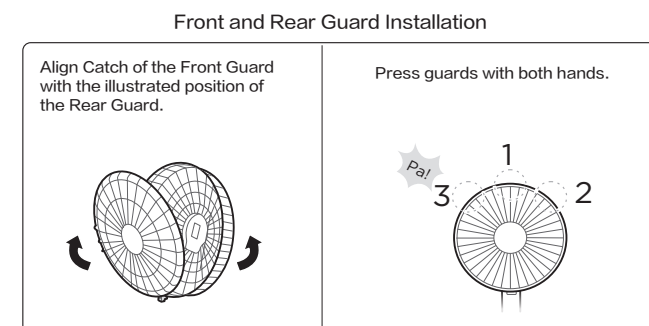
■ Name of components



Loosen 4 sets of screws, washers and spring washers which are fitted in the center section on the stand and assembly the extension pole onto the base enclosure with these screws originally.

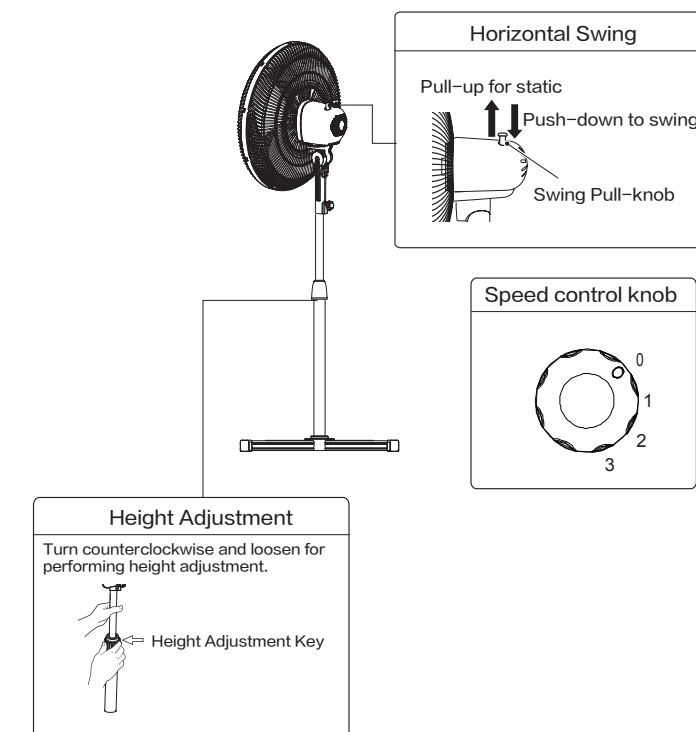


2



3

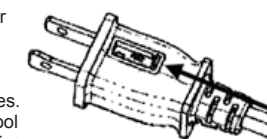
INSTRUCTIONS FOR USE



4

USER SERVICING INSTRUCTIONS

- a) Grasp plug and remove from the receptacle or other outlet device. Do not unplug by pulling on cord.
- b) Open fuse cover. Slide open fuse access cover on top of attachment plug towards blades.
- c) Remove fuse carefully. Insert the tip of your tool into fuse slot (close with the terminal), then prize the fuse gradually and slowly, but not overexert. If you feel tight, you can try it at several times and prize the fuse little by little. When one side of the fuse has been prized, then you can get the fuse out entirely.
- d) Risk of fire. Replace fuse only with 2.5 Amp, 125 Volt fuse.
- e) Close fuse cover. Slide closed the fuse access cover on top of attachment plug.
- f) Risk of fire. Do not replace attachment plug. Contains a safety device (fuse) that should not be removed. Discard product if the attachment plug is damaged.



Notice:

1. When you replace the fuse, please don't operate suddenly or overexert, or else the product will be damage or cause accident.
2. When you feel it hard to be operated, please make sure you have got the right way.

CLEANING

1. Be sure to unplug from the electrical supply source before cleaning.
2. Plastic parts should be cleaned with mild soap and a damp cloth or sponge. Thoroughly to remove soap film with clean water.
3. Be sure not to make water or other liquid enter inside of motor.

5