

正面

**MOZA**  
RACING

**Racing Ecosystem**

Master the Art of Driving



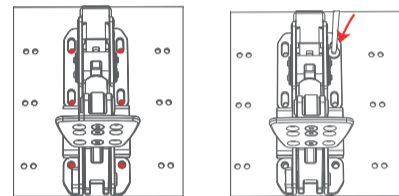
User manual 使用说明书

**01 Product Description**

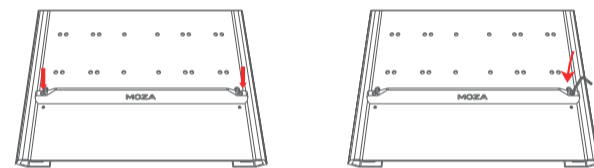
- CNC Aluminum Alloy.
- 100KG/220lbs load cell sensor.
- Three-stage clutch.
- Organ type accelerator.
- Adjustable resistance, angle, and Travel.
- Tuning by Experienced Drivers.

**02 CRP Pedal Installation**

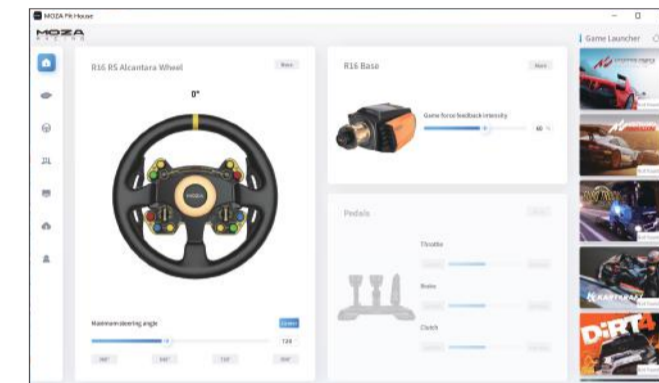
1. Install the pedals to the bottom plate and adjust the position. Install the screws and gaskets for each pedal. In order to ensure the stability of use, it is recommended to install all 6 screws for each pedal.



2. Mount the baffle horizontally, align both ends, and then tighten, and secure it to the base with the M4 screws.

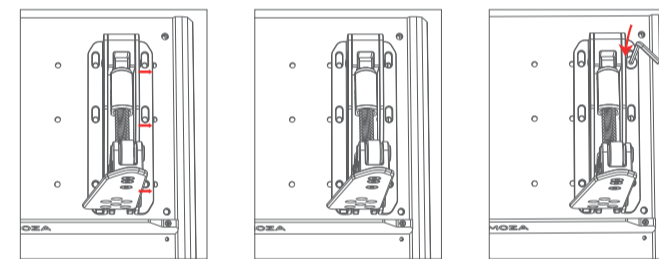


3. Insert the interface of the throttle line into the throttle interface found in the control module at the bottom of the brake. Connect the clutch line to the clutch interface in the control module, and connect the other end to the PC.
4. The Working status of CRP Pedal can be viewed in the MOZA Pit House. (If the device is still gray or there is no response after stepping on it, please unplug the USB interface at the PC end, close the pit house, re-connect the USB interface, and reopen the MOZA Pit House)
5. The start, end and travel of the pedal can be set in MOZA Pit House.



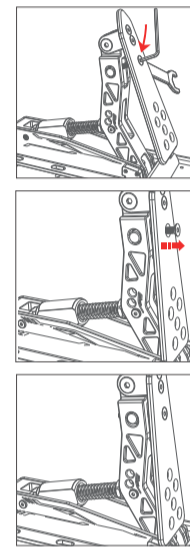
**03 Pedal Spacing Adjustment**

Adjust the pedal forward or backwards. Use the included screws to secure the pedal once the correct position has been found.



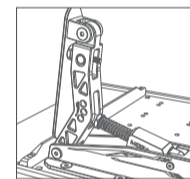
**04 Pedal Surface Angle Adjustment**

Use a hexagon screwdriver counterclockwise to loosen the screw on the face of the pedal. Use your hand to turn the nut to change the angle of the pedal. To lock in the pedal's position just secure the screw on the face of the pedal. The pedal adjustment methods for accelerator, brake, and clutch are the same.



**05 Accelerator Force and Stroke Adjustment**

Twist the adjusting nut to change the Accelerator stroke. Rotate the adjusting nut on the upper part of the spring by hand. Moving downward will shorten the throttle stroke. Accordingly, the starting force of the throttle will increase, and the ending force will remain unchanged.

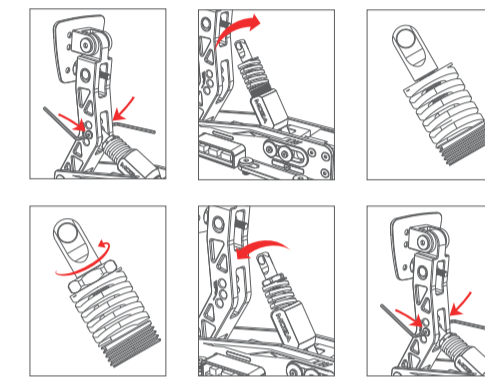


**06 Brake Force Adjustment**

**1. Change the spring to adjust braking force**

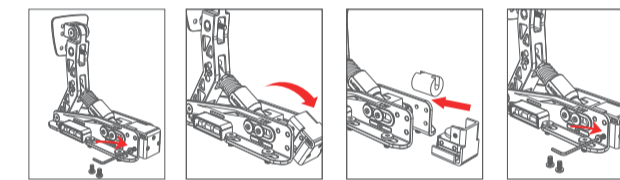
Loosen the screw with the M5 wrench, take out the screw and pin shaft, turn counterclockwise, and take out the spring assembly. Turn counterclockwise the flat nut and remove the spring assembly

To push out the spring and shaft, depress the spring. Then turn the flat nut clockwise to unscrew. Swap in the different spring, screw back on the caps. The spring sleeve should be flush with the mounting hole, insert the pin and, tighten the screw.



**2. Replace the damping block and change braking force**

Remove the two screws on the side with the M5 wrench. Turn the decorative cover plate downward, take out the pressure sensor fixing plate, take out the rubber pad, replace the corresponding rubber pad. Then reassemble.

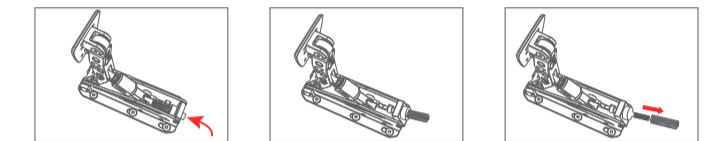


**3. Adjust the brake mounting position to change braking force.**

**07 Clutch Adjustment**

**1. Replace the rear end spring and change the separation force curve.**

Turn the bolt to take out the spring. Replace the corresponding spring. To test press the pedal's surface by hand.



**2. Adjust the clutch mounting position to change the clutch force**

**08 Comparison Table of Spring and Rubber Damping Block Strength**

	Spring			Damping block		
Color/type	Black	Yellow	Red	Soft	Medium	Hard
Brake		Middle	Hard	Soft	Medium	Hard
Clutch	Soft	Middle				

For more information and teaching videos, please visit the official website (MOZARACING.COM)

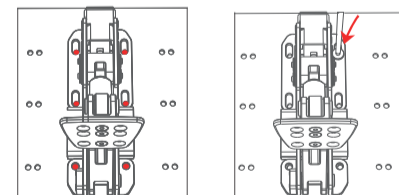
背面

**01 产品介绍**

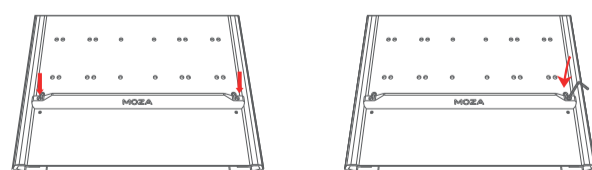
- 航空级铝合金CNC工艺
- 100kg压感传感器
- 3段式离合
- 风琴式油门
- 力度、角度、行程可调
- 多位专业车手调教

**02 踏板安装流程**

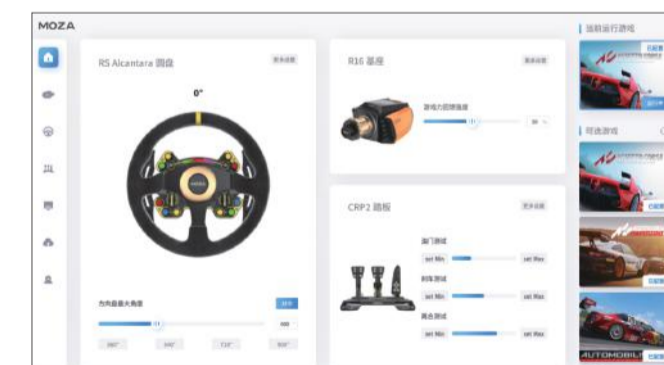
1. 将踏板装在底座上并调整好安装孔位, 将螺丝和垫片装上固定踏板, 为了保证使用稳定性, 建议每个踏板的全部6个螺丝都安装到位



2. 将挡板横放在底座上的小螺丝孔处, 使两端对齐然后用M4螺丝拧紧并固定到底座上

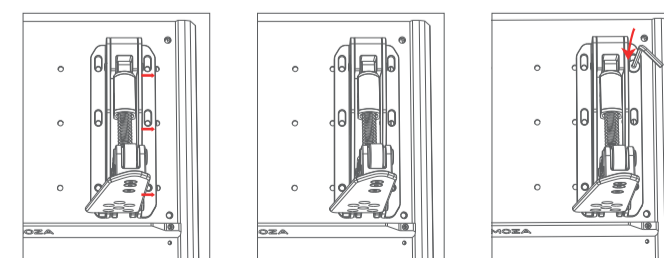


3. 将油门线的接口插入刹车底部控制模块中的Throttle接口, 将离合线插入控制模块中的Clutch接口, 将USB线的弯头Type-B端接入控制模块中的USB接口, 另一端接入PC。
4. 在MOZA Pit House中即可看到CRP踏板的工作状态。(若设备仍为灰色或踩踏后无响应, 请拔处PC端USB接口, 关闭Pit House, 再重新接入USB接口, 打开Pit House)
5. 可在Pit House中重新设置踏板的起点, 终点和行程。



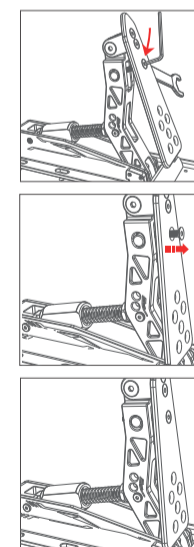
**03 踏板间距调节**

左右移动调节踏板与底座孔位之间的间距, 选择好螺丝空位后再锁紧螺丝



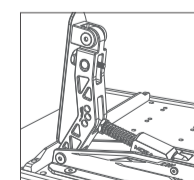
**04 踏板表面角度调节**

使用扳手逆时针转动踏板表面的螺丝, 手动拨动背面螺母, 按压板面根据自身需求调节板面角度, 然后将螺母拧至与板面贴合并固定(油门、刹车和离合的板面调节方式一致)



**05 油门力度和行程调节**

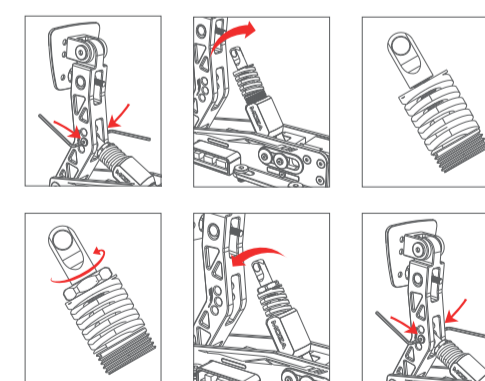
扭动调节螺母改变油门行程  
用手旋转弹簧上部的调节螺母, 向下运动则会使油门行程变短, 相应的, 油门起始力度会变大, 终止力不变。



**06 刹车力度调节**

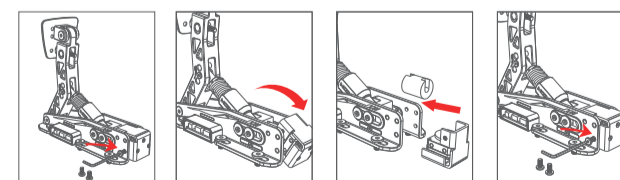
**1. 更换弹簧改变刹车力度**

使用两个M5扳手拧松螺丝, 取出螺丝和轴销, 逆时针转动并取出弹簧组件, 逆时针转动扁头螺母和扁头螺母, 并更换好对应的弹簧, 用力按压弹簧将弹簧轴顶出, 随后顺时针转动扁头螺母, 再将扁头螺母固定, 最后将整根弹簧组件拧入到弹簧套筒中, 与定位孔对齐后, 插入轴销并拧紧螺丝。



**2. 更换阻尼块改变刹车力度**

使用M5扳手取出侧面两颗螺丝, 向下转动装饰盖板, 取出压力传感器固定板, 取出橡胶垫, 更换对应的橡胶垫后装回螺丝并固定

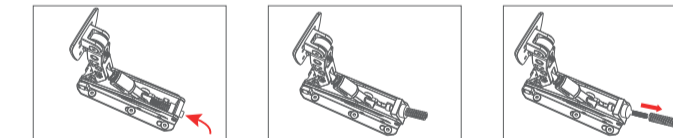


**3. 调节刹车孔位改变刹车力度, 与油门同理。**

**07 离合调节**

**1. 更换后端弹簧改变离合力曲线**

转动螺栓取出弹簧, 更换对应的弹簧, 手压踏板面将滚轮固定至滑轨上, 调整扁头螺母使其水平, 然后顺时针转动螺栓固定



**2. 调节离合孔位改变离合力度, 与油门同理。**

**08 弹簧与橡胶阻尼块力度对照表**

	弹簧			阻尼块		
颜色/类型	黑	黄	红	Soft	Medium	Hard
刹车		中	硬	软	Medium	硬
离合	软	中				

更多信息和教学视频请登录官网(MOZARACING.COM)进行查阅。

产品保修卡		
产品型号		购买日期
用户姓名		用户电话
产品条码		通讯地址

经销商信息(盖章)

**产品保修条例**

**保修期**

自购机日起, 底座主体, 方向盘, 踏板和仪表显示屏保修12个月。设备外壳、说明书、线材、螺丝、扳手、包装等不在“一年免费保修服务”范围内, 但您可以选择有偿服务。

- 购买者在以下条件下不享受免费保修服务, 但您可以选择有偿服务。
1. 超过三包有效期的;
  2. 无三包凭证及有效发票的, 但能够证明该产品在三包有效期内的除外;
  3. 包修凭证上的型号与修理产品型号不符或者涂改的;
  4. 非本公司特约维修人员拆动造成损坏的;
  5. 因不可抗拒力造成损坏的;
  6. 未按产品使用说明书要求使用、维护、保养而造成损坏的。
- 保修期限鉴于产品部位、不同国家法律法规等差异, 将有所不同。相关国家与区域的保修期限, 请咨询MOZA官方或购买时联系的MOZA授权经销商。

