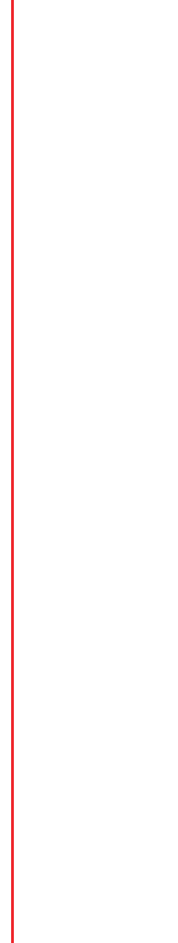
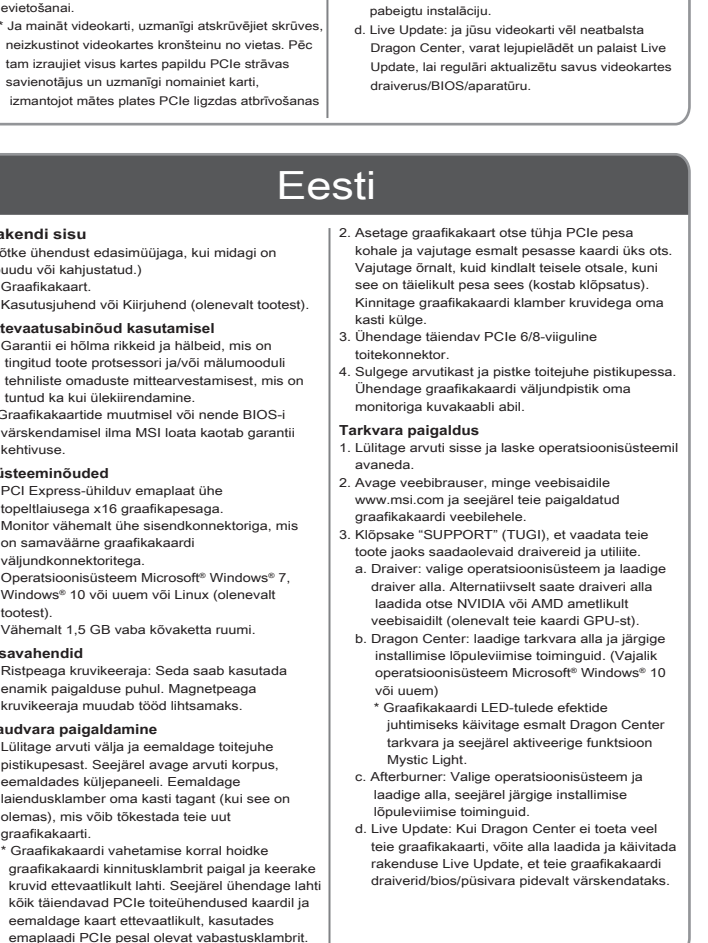
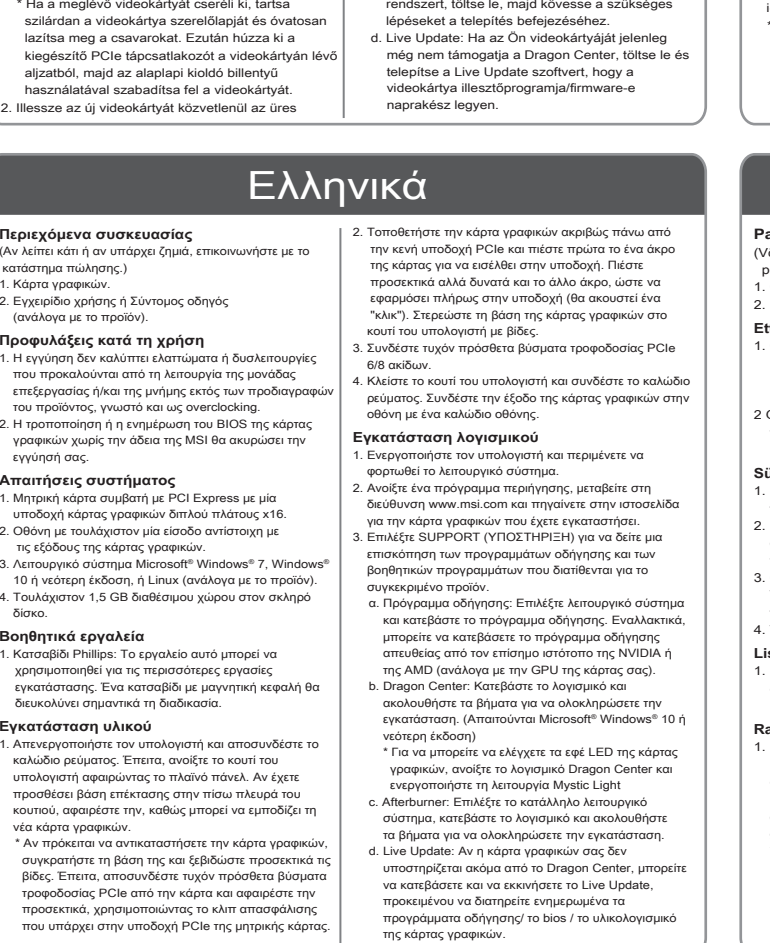
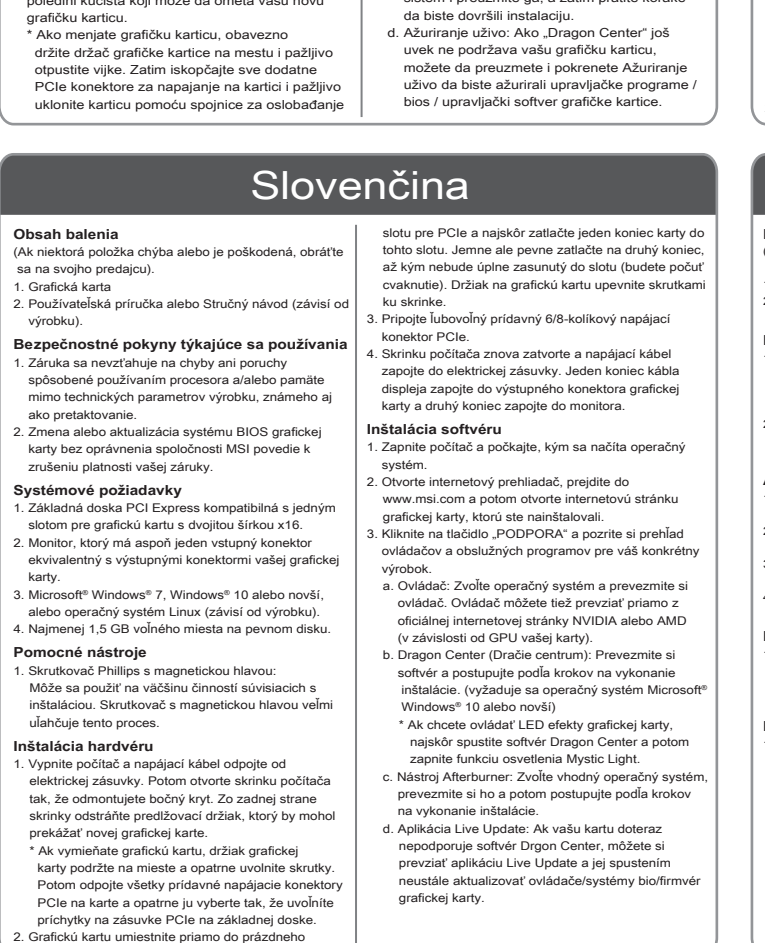
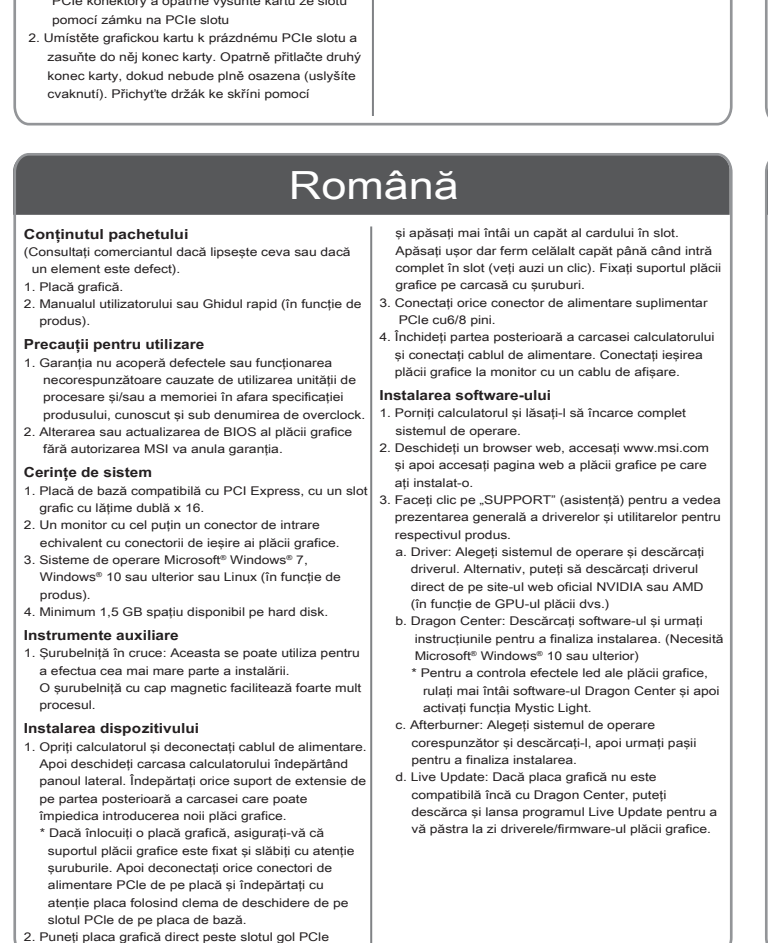
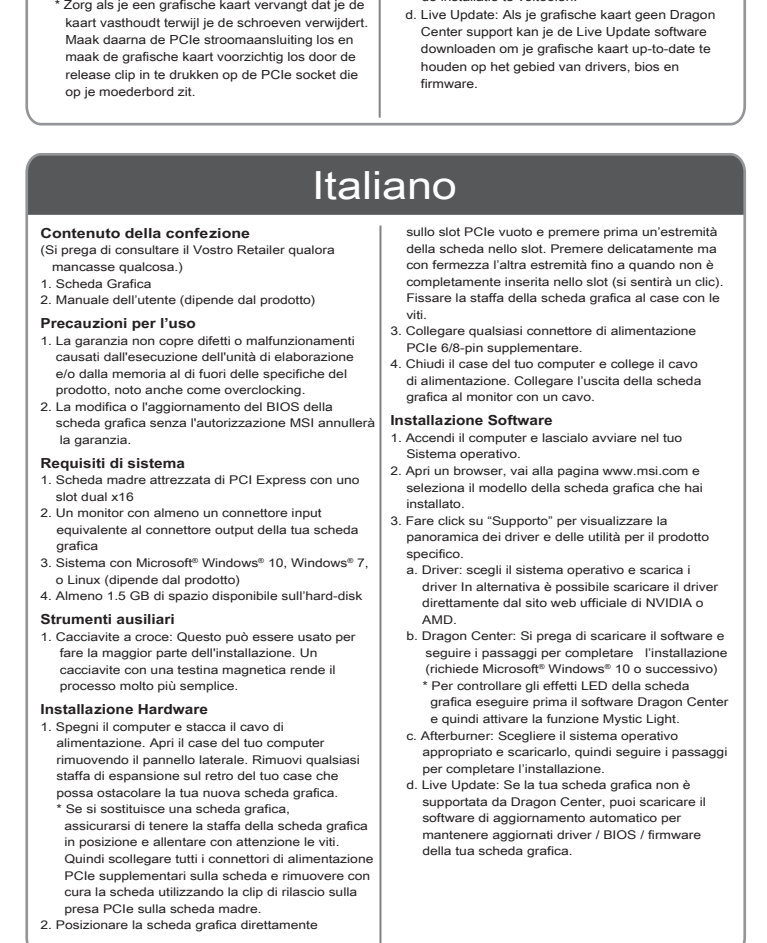
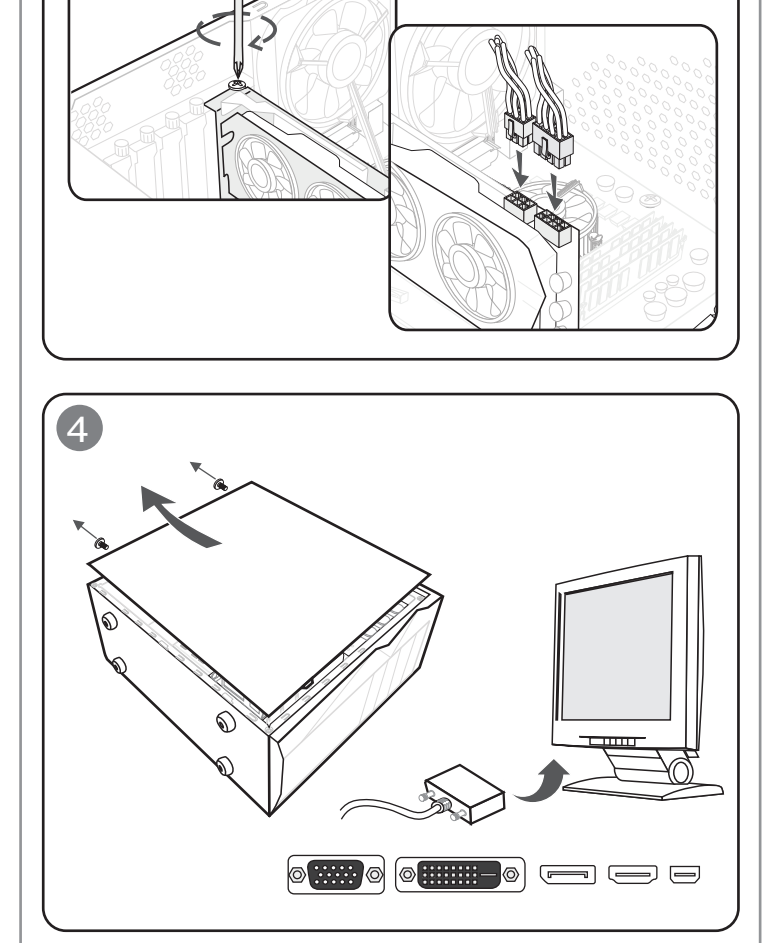
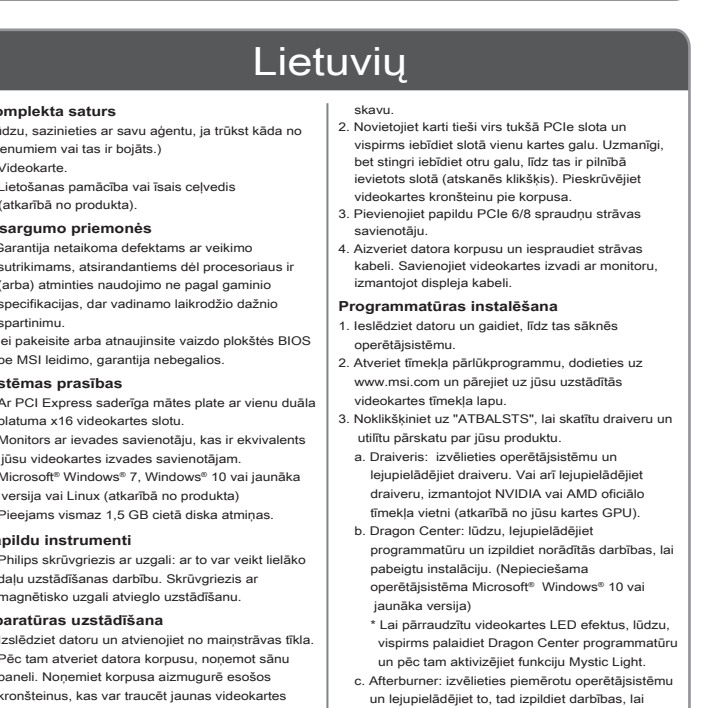
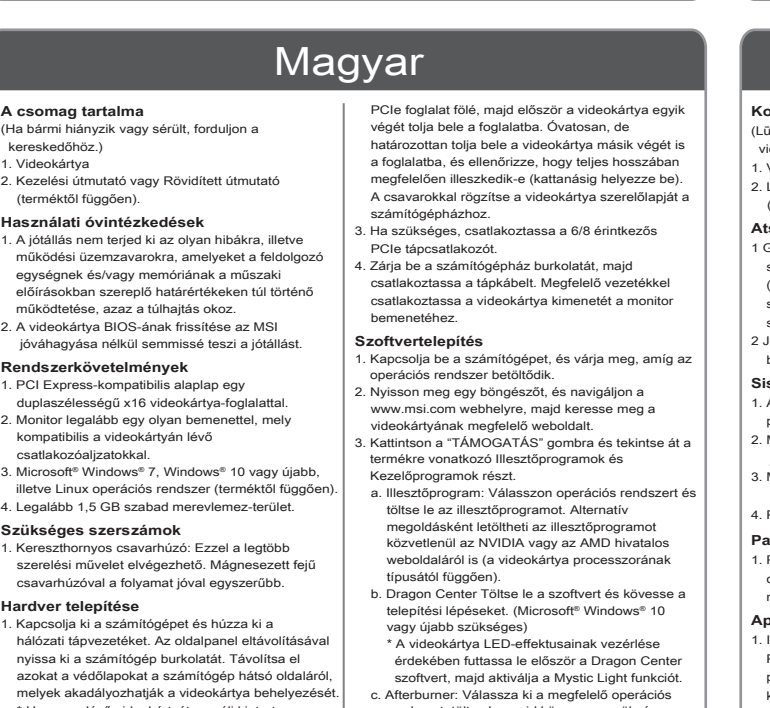
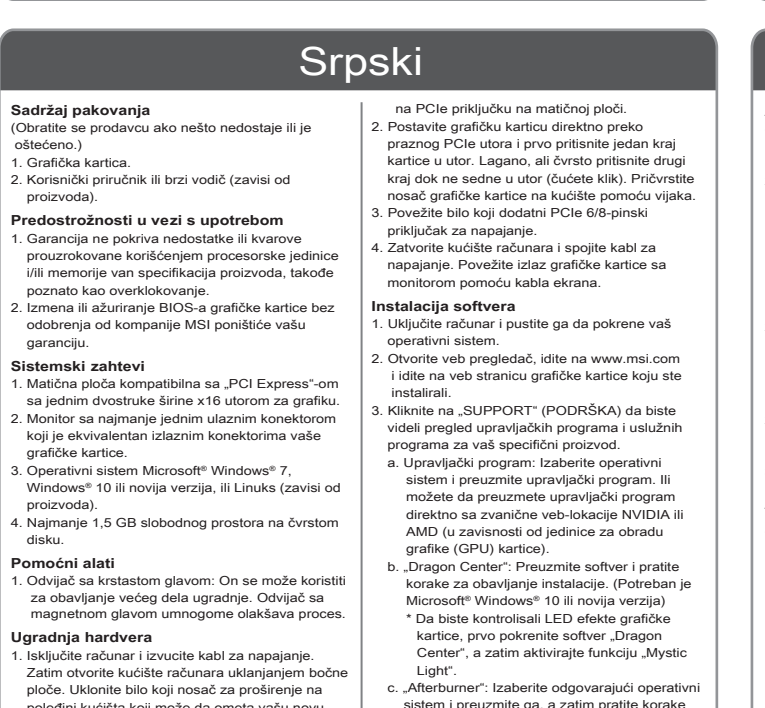
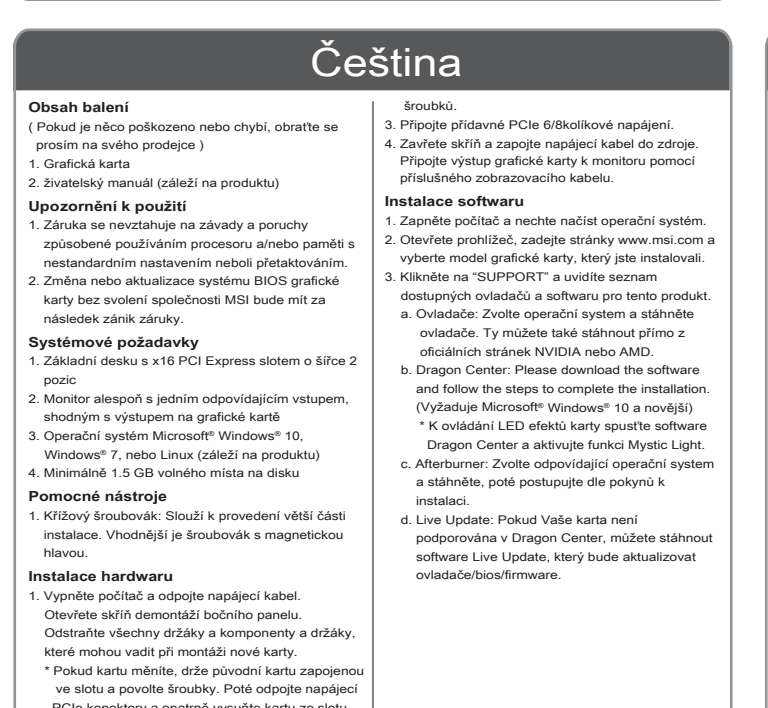
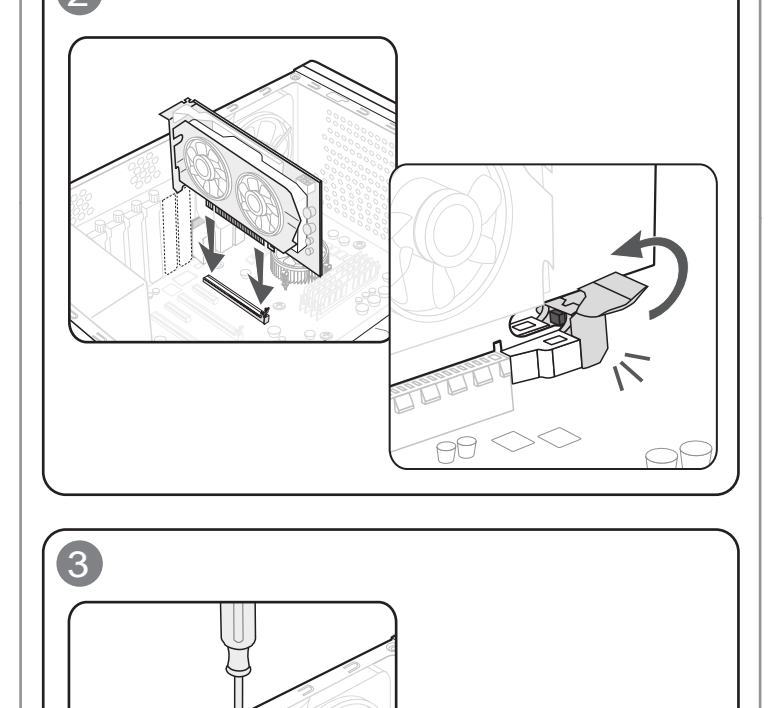
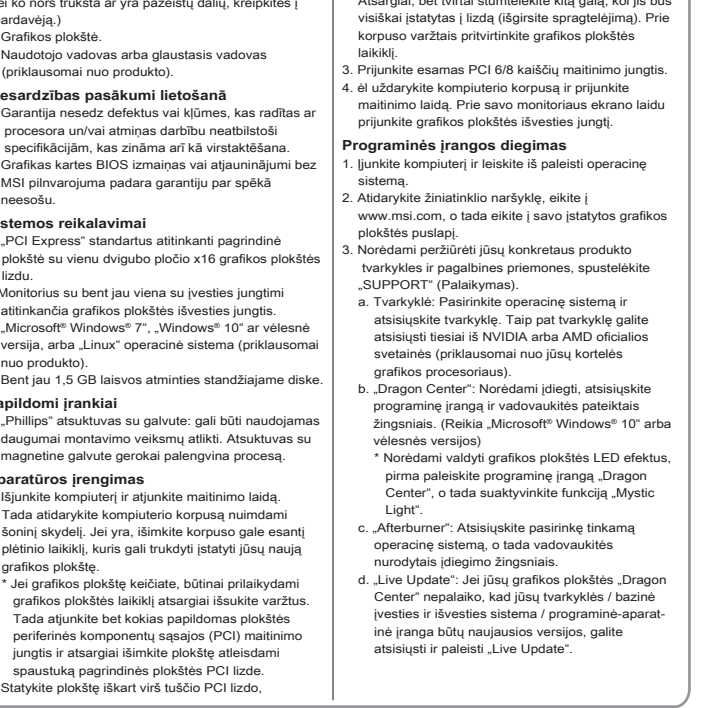
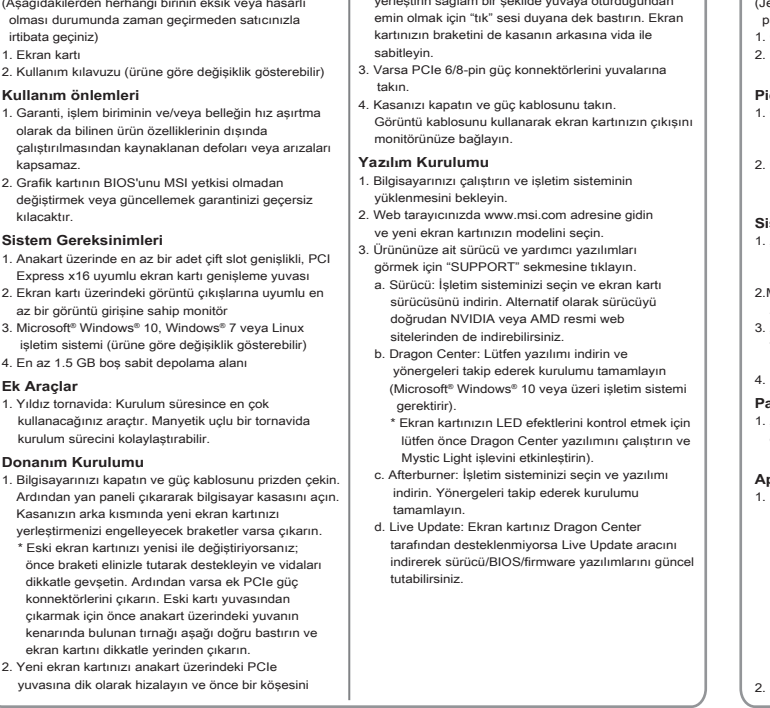
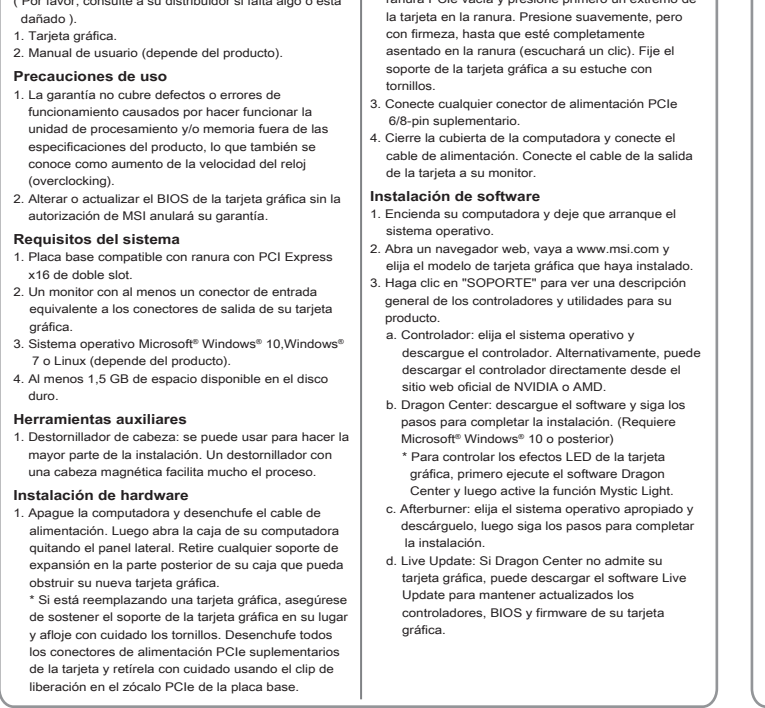
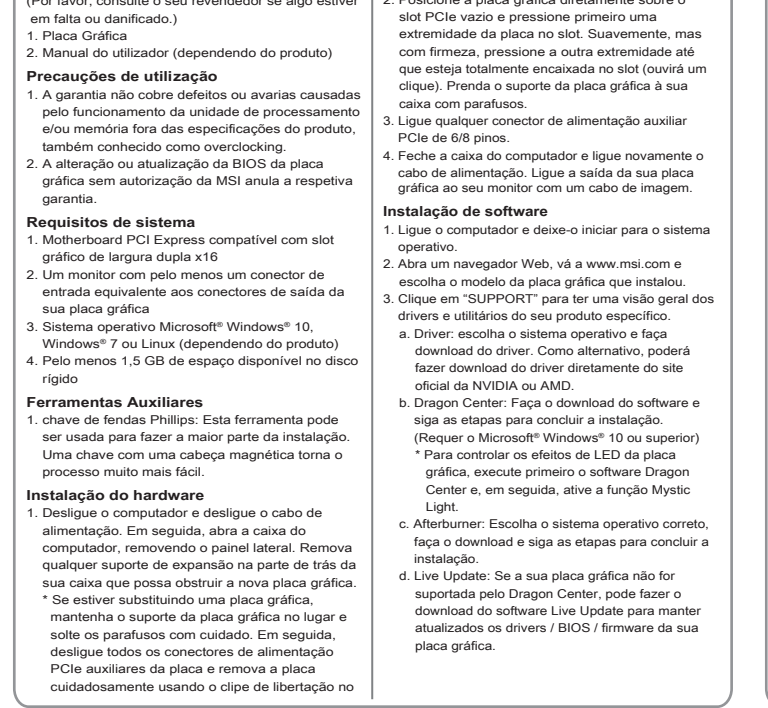
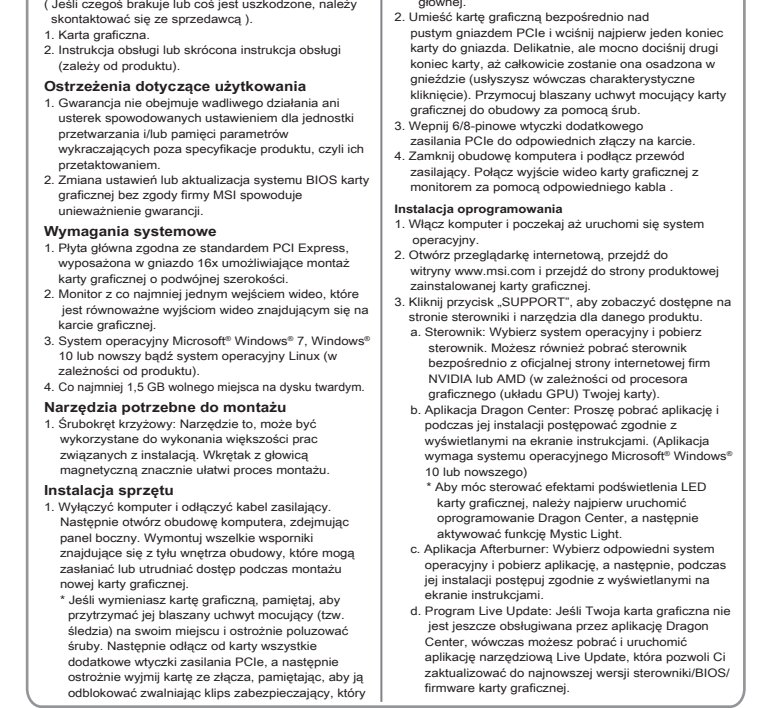
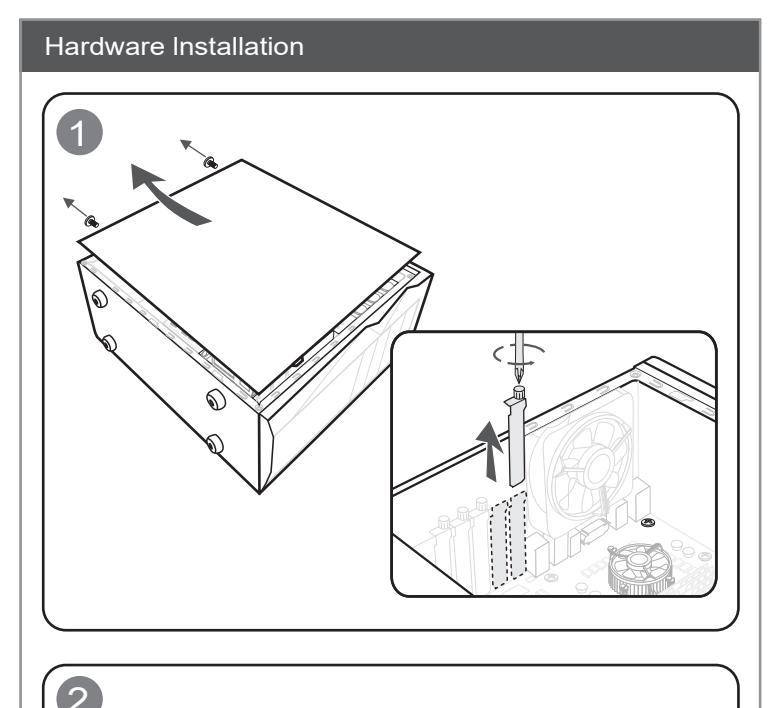
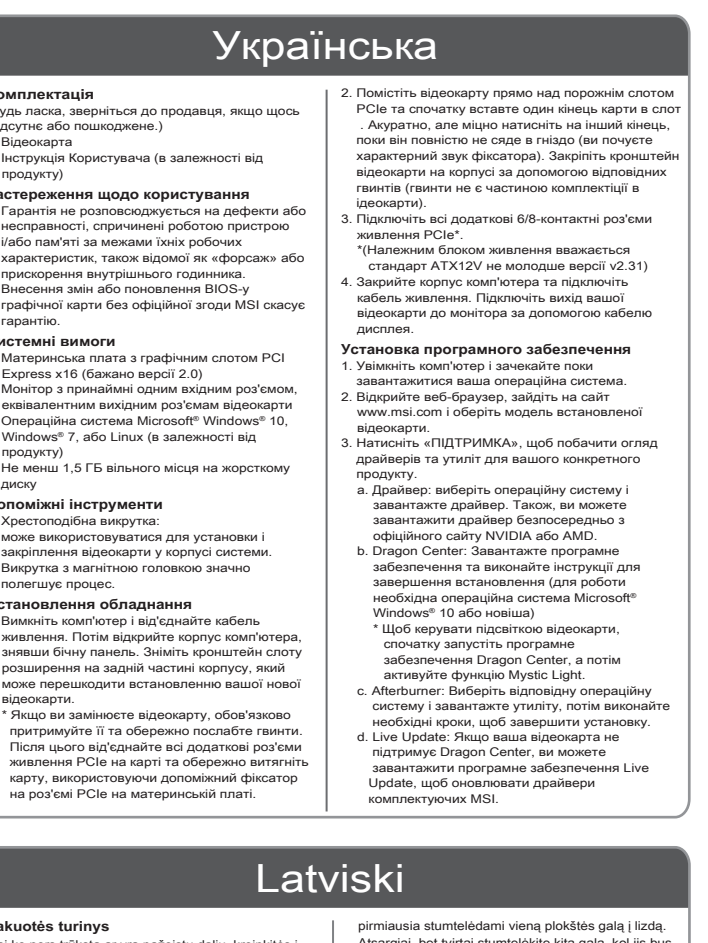
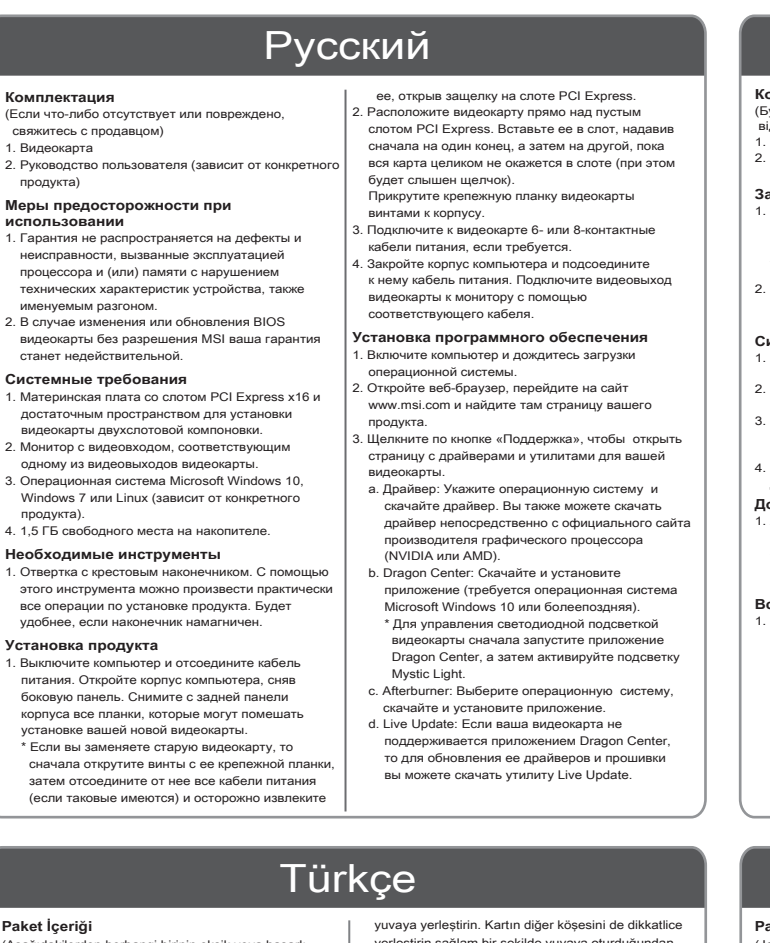
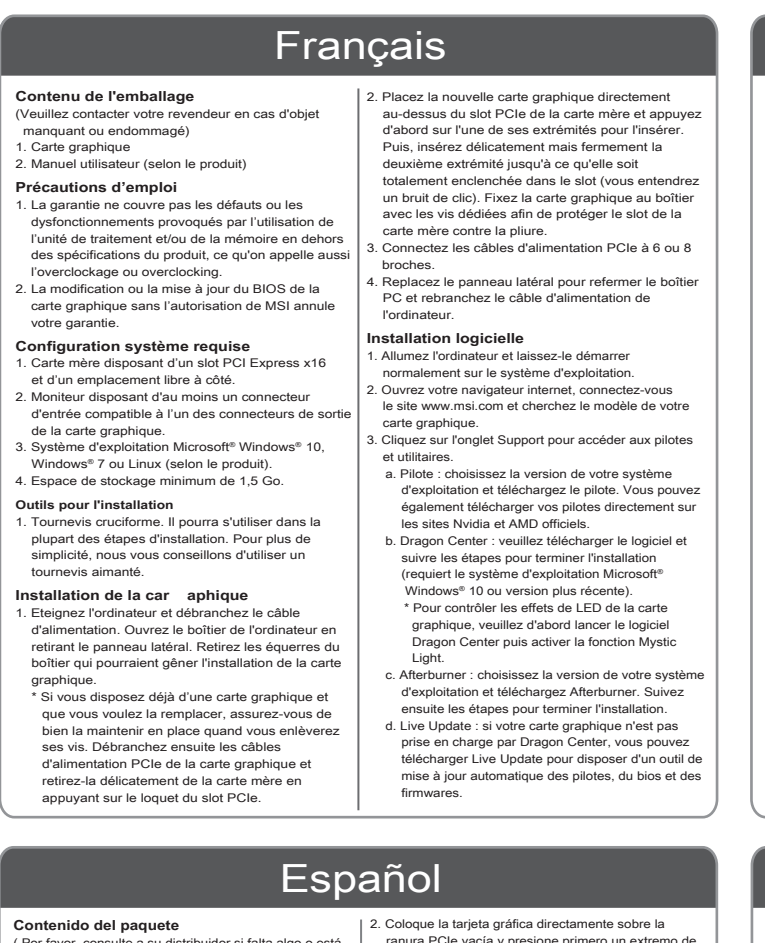
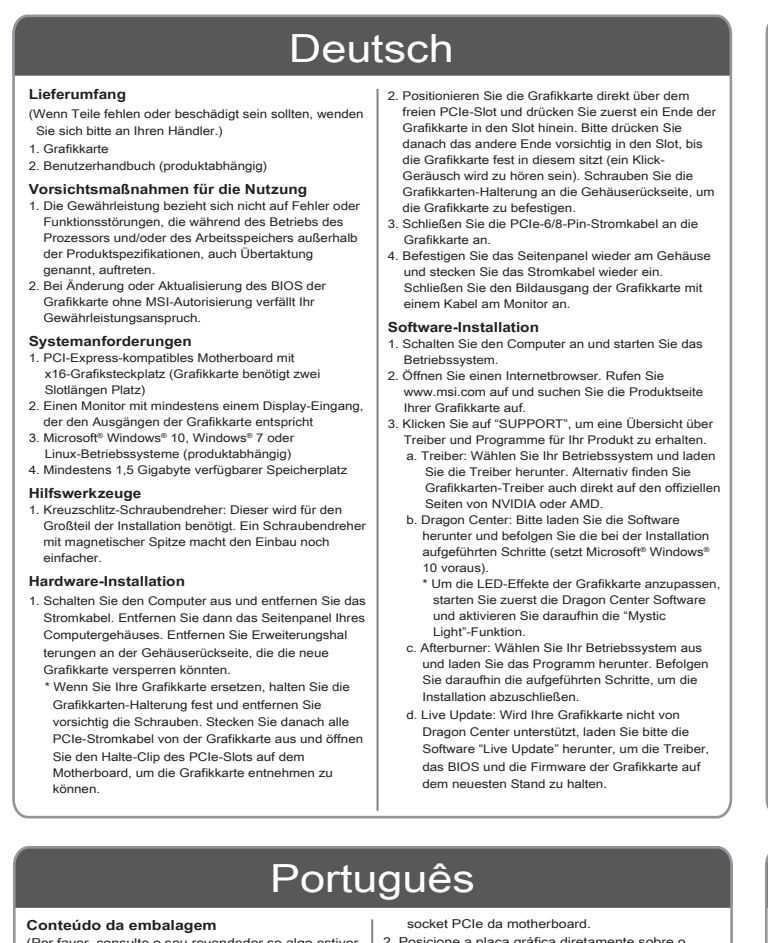
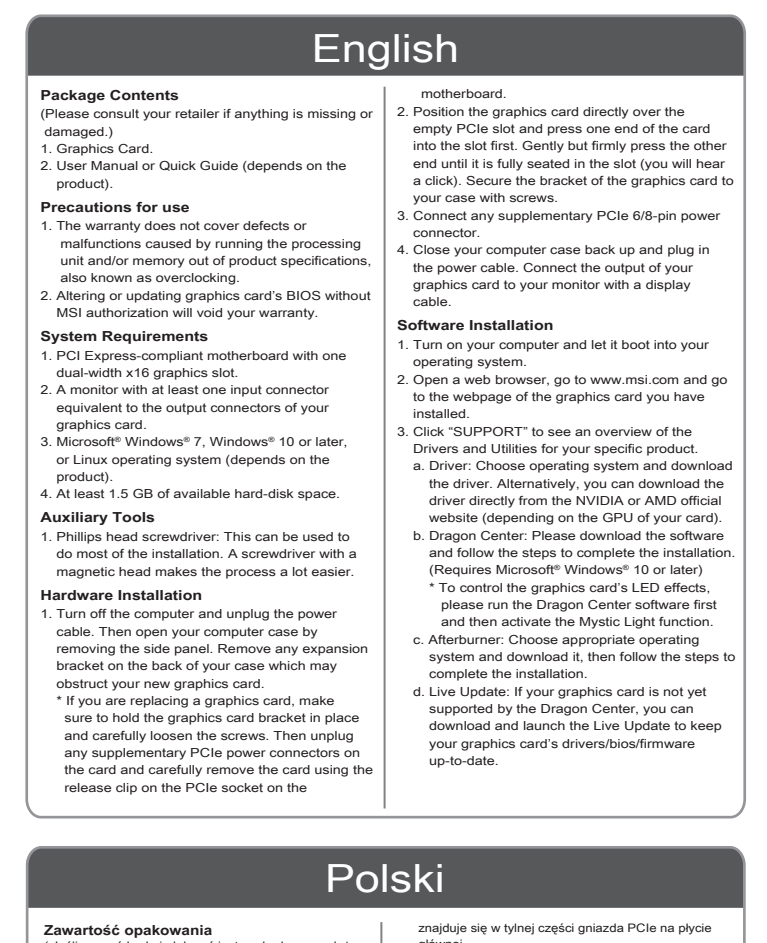
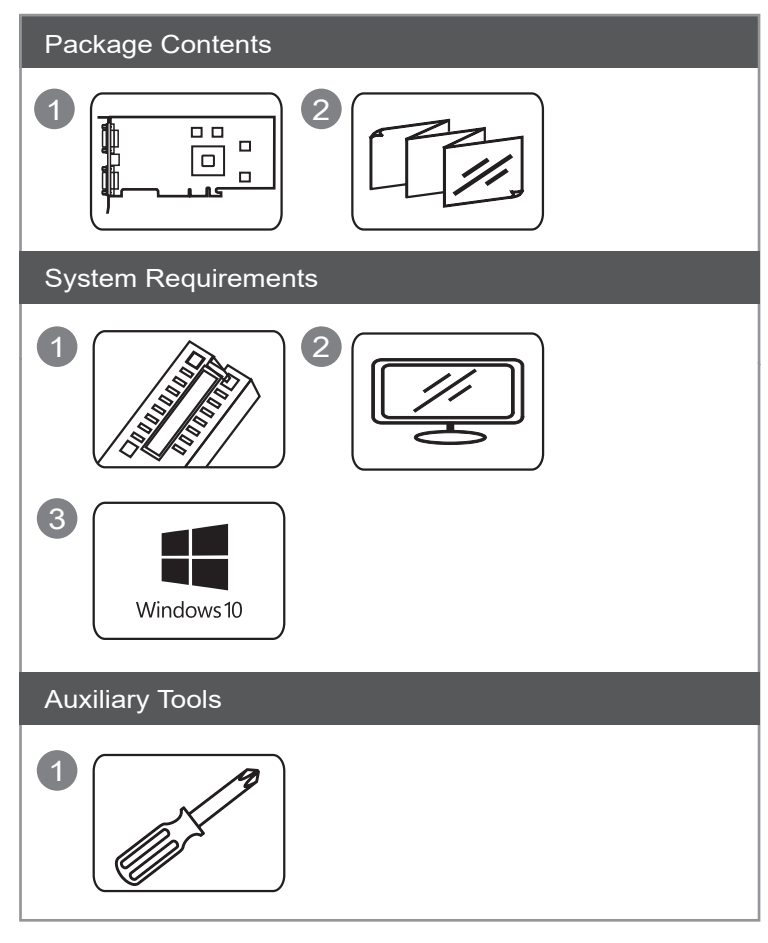
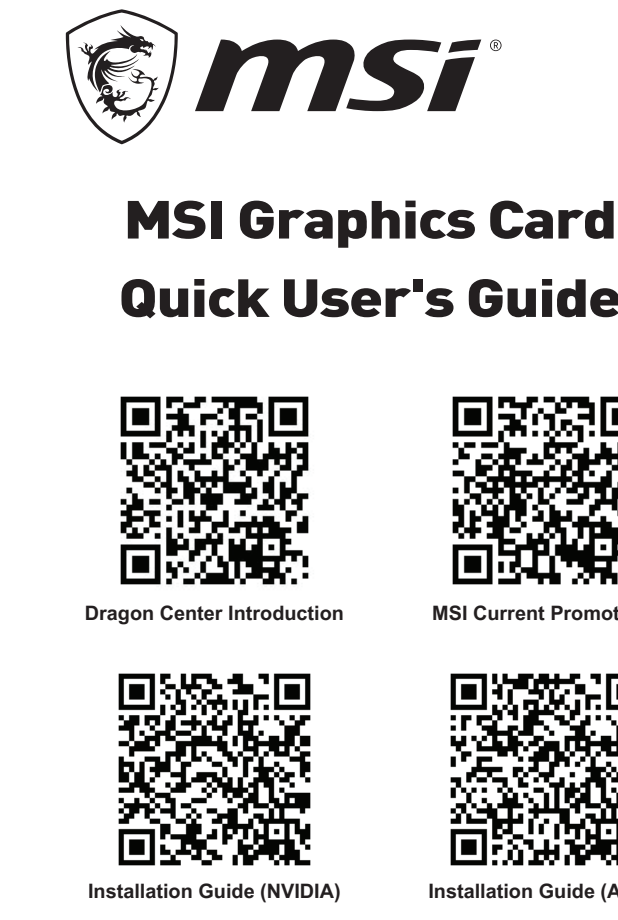


MSI Graphics Card Quick User's Guide. A multi-page manual with instructions in 18 languages: English, Deutsch, Français, Русский, Українська, Polski, Português, Español, Türkçe, Latviski, Nederlands, Čeština, Srpski, Magyar, Lietuvių, Italiano, Română, Slovenčina, Ελληνικά, and Eesti. Each page includes numbered steps, diagrams, and QR codes for software downloads.



MSI Afterburner is the world's most recognized and widely used graphics card overclocking utility. For more information please visit: http://www.msi.com/page/afterburner

Note that the installation pictures shown are for reference only and may vary from the actual ones. For more information about MSI Graphics Cards, please visit: http://www.msi.com/Graphics-cards

### Package Contents

1. Main product box
2. Quick start guide
3. Power supply
4. SATA to USB adapter

### System Requirements

1. Windows 10
2. Intel Core i3-10105
3. 8GB RAM
4. 128GB SSD

### Auxiliary Tools

1. Phillips screwdriver

### Hardware Installation

1. Connect SATA to USB adapter
2. Connect power supply
3. Connect SATA drive
4. Connect SATA to USB adapter

### 简体中文

#### 包装内容

1. 主机
2. 快速入门指南
3. 电源适配器
4. SATA 转 USB 适配器

#### 系统要求

1. Windows 10
2. Intel Core i3-10105
3. 8GB RAM
4. 128GB SSD

#### 辅助工具

1. 十字螺丝刀

### MSI Warranty Procedures and Conditions

This is only valid for Australia.

The terms and conditions of MSI's warranty described herein apply to the products set forth by the Australian Consumer Law (ACL).

Questions? Your manual has information on how you may download the manual you need from the MSI website.

MSI is not responsible for any damage to your product or any other equipment caused by the use of the product.

**(1) Determination of the warranty period.** The warranty period starts from the date you purchase the product with valid invoice. If the date of the warranty period is a holiday, the following day shall be the day of the warranty period.

**(2) Customer-Initiated Defect (CID).** If the problem or symptom is not caused by improper usage defined as Customer-Initiated Defect (CID), and is not to be repaired in warranty, MSI reserves the right to determine whether the products are repaired within the scope of proper usage.

**(3) Limited Warranty.** The software not provided is not covered under the Product's warranty. MSI is not responsible for any damage to your product or any other equipment caused by the use of the product.

**(4) Screen the problems by self-checking.** Please first review the User's Manual and contents of the Software CD included with the Product. The User's Manual and Software CD provided by MSI contain a lot of information about product use. The manual will compose from user's perspective can answer many of your questions.

**(5) Warranty receipt.** Please first review the additional warranty is required. Please contact MSI Australia Pty at the following: Live: 13 22 3968 Fax: 61 8 9470 2144, Australia.

**(6) Contact.** Please visit our website: [www.msi.com](http://www.msi.com)

### Қазақ

#### Қазақ тіліндегі пайдаланушының ақпараттары

1. Пайдаланушының ақпараттары
2. Пайдаланушының ақпараттары
3. Пайдаланушының ақпараттары
4. Пайдаланушының ақпараттары

#### Жүйелік талаптар

1. Windows 10
2. Intel Core i3-10105
3. 8GB RAM
4. 128GB SSD

### Norsk

#### Pakkeinnhold

1. Hovedprodukt
2. Hurtigveiledning
3. Nettdrivesystem
4. SATA-til-USB-adapter

#### Systemkrav

1. Windows 10
2. Intel Core i3-10105
3. 8GB RAM
4. 128GB SSD

### 한국어

#### 패키지 내용

1. 메인 제품
2. 빠른 시작 가이드
3. 전원 어댑터
4. SATA to USB 어댑터

#### 시스템 요구사항

1. Windows 10
2. Intel Core i3-10105
3. 8GB RAM
4. 128GB SSD

### ภาษาไทย

#### บรรจุภัณฑ์

1. ผลิตภัณฑ์หลัก
2. คู่มือฉบับรวดเร็ว
3. อะแดปเตอร์
4. อะแดปเตอร์ SATA to USB

#### ข้อกำหนดระบบ

1. Windows 10
2. Intel Core i3-10105
3. 8GB RAM
4. 128GB SSD

### Svenska

#### Packått innehåller

1. Huvudprodukten
2. Snabbstartsguiden
3. Nettdrivesystemet
4. SATA-til-USB-adapteren

#### Systemkrav

1. Windows 10
2. Intel Core i3-10105
3. 8GB RAM
4. 128GB SSD

### Slovensčina

#### Vsebina paketa

1. Glavni produkt
2. Hitri vodnik
3. Netno drivo
4. SATA-til-USB-adapter

#### Systemne zahteve

1. Windows 10
2. Intel Core i3-10105
3. 8GB RAM
4. 128GB SSD

### हिन्दी

#### पैकेज सामग्री

1. मुख्य продукт
2. быстрый старт гид
3. сетевое устройство
4. SATA-til-USB-адаптер

#### системные требования

1. Windows 10
2. Intel Core i3-10105
3. 8GB RAM
4. 128GB SSD

### Tiếng Viet

#### Bản trong sản phẩm

1. Sản phẩm chính
2. Hướng dẫn nhanh
3. Thiết bị kết nối
4. Bộ chuyển đổi SATA sang USB

#### Yêu cầu hệ thống

1. Windows 10
2. Intel Core i3-10105
3. 8GB RAM
4. 128GB SSD

### Suomi

#### Pakkaus sisältö

1. Päätuote
2. Nopea aloitus ohje
3. Virtalaitteisto
4. SATA-USB-adapteri

#### Järjestelmävaatimukset

1. Windows 10
2. Intel Core i3-10105
3. 8GB RAM
4. 128GB SSD

### Hrvatski

#### Sadržaj pakiranja

1. Glavni proizvod
2. Brzi vodič
3. Mrežno uređaj
4. SATA-USB-adapter

#### Zahtjevi sustava

1. Windows 10
2. Intel Core i3-10105
3. 8GB RAM
4. 128GB SSD

### 日本語

#### パッケージ内容

1. 本体
2. 快速スタートガイド
3. ネットドライブ
4. SATA to USB アダプター

#### 動作環境

1. Windows 10
2. Intel Core i3-10105
3. 8GB RAM
4. 128GB SSD

### हिन्दी

#### पैकेज सामग्री

1. मुख्य продукт
2. быстрый старт гид
3. сетевое устройство
4. SATA-til-USB-адаптер

#### системные требования

1. Windows 10
2. Intel Core i3-10105
3. 8GB RAM
4. 128GB SSD

### Dansk

#### Pakkeens indhold

1. Hovedprodukt
2. Hurtigstartvejledning
3. Netdrivesystem
4. SATA-til-USB-adapter

#### Systemkrav

1. Windows 10
2. Intel Core i3-10105
3. 8GB RAM
4. 128GB SSD

### 繁體中文

#### 包裝內容

1. 主機
2. 快速入門指南
3. 網路設備
4. SATA 轉 USB 轉接器

#### 系統需求

1. Windows 10
2. Intel Core i3-10105
3. 8GB RAM
4. 128GB SSD

### Bahasa Indonesia

#### Isi Kemasan

1. Produk utama
2. Panduan cepat
3. Perangkat jaringan
4. Adapter SATA ke USB

#### Keperluan sistem

1. Windows 10
2. Intel Core i3-10105
3. 8GB RAM
4. 128GB SSD

### العربية

#### محتويات الحزمة

1. المنتج الرئيسي
2. دليل البدء السريع
3. الجهاز الشبكي
4. محول SATA إلى USB

#### متطلبات النظام

1. Windows 10
2. Intel Core i3-10105
3. 8GB RAM
4. 128GB SSD

### Bosanski

#### Sadržaj pakovanja

1. Glavni proizvod
2. Brzi vodič
3. Mrežno uređaj
4. SATA-USB-adapter

#### Systemne zahteve

1. Windows 10
2. Intel Core i3-10105
3. 8GB RAM
4. 128GB SSD

### Български

#### Съдържание на опаковката

1. Основен продукт
2. Бърз водич
3. Мрежно устройство
4. SATA-USB адаптер

#### Изисквания на системата

1. Windows 10
2. Intel Core i3-10105
3. 8GB RAM
4. 128GB SSD

### বাংলা

#### প্যাকেজের উপাদান

1. মূল প্রস্তুত
2. দ্রুত শুরু গাইড
3. নেট ড্রাইভ
4. SATA to USB অ্যাডাপ্টার

#### সিস্টেম প্রয়োজন

1. Windows 10
2. Intel Core i3-10105
3. 8GB RAM
4. 128GB SSD

### فارسی

#### محتویات بسته بندی

1. محصول اصلی
2. راهنمای شروع سریع
3. دستگاه شبکه
4. آداپتور SATA به USB

#### نیازهای سیستم

1. Windows 10
2. Intel Core i3-10105
3. 8GB RAM
4. 128GB SSD

