



LIQUID COOLING SERIES

INSTALLATION GUIDE

Copyright and Trademarks Notice

Copyright © Micro-Star Int'l Co., Ltd. All rights reserved. The MSI logo used is a registered trademark of Micro-Star Int'l Co., Ltd. All other marks and names mentioned may be trademarks of their respective owners. No warranty as to accuracy or completeness is expressed or implied. MSI reserves the right to make changes to this document without prior notice.

Cautions and Statements



DO NOT touch the cooling system since it may produce a certain heat while processing tasks.



Do not force the GPU cooler against the fragile GPU to avoid damage to the GPU.

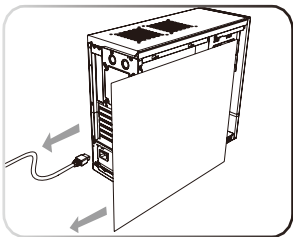


European Union: Under the European Union ("EU") Directive on Waste Electrical and Electronic Equipment, Directive 2002/96/EC, which takes effect on August 13, 2005, products of "electrical and electronic equipment" cannot be discarded as municipal waste anymore and manufacturers of covered electronic equipment will be obligated to take back such products at the end of their useful life.

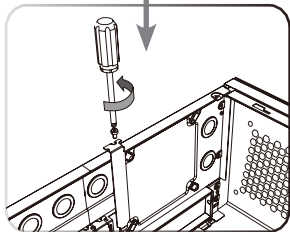
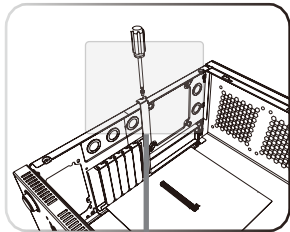
SUPRIM LIQUID (Closed Loop) Installation

.....

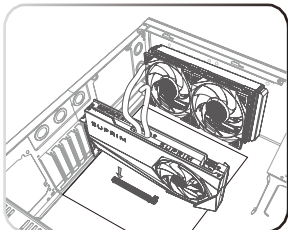
• Step 1



• Step 2



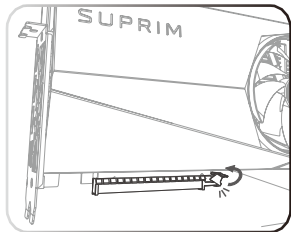
• Step 3



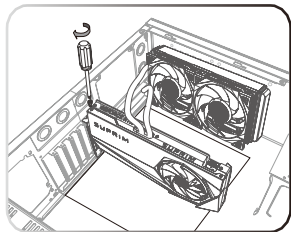
1. Turn off the power, and disconnect the power cable. Open the case of your computer.
2. Remove the expansion brackets required to place your graphics card.
3. Place the card directly over the PCI EXPRESS slot

- Carefully insert the card into the PCI EXPRESS slot until the card is fully seated. You will likely hear a click when it is locked in place.
Note: Inserting the graphics card into a wrong slot or using incorrect orientation may damage the card. Refer to your motherboard manual for further information if necessary.
- Secure the card with a bracket screw.

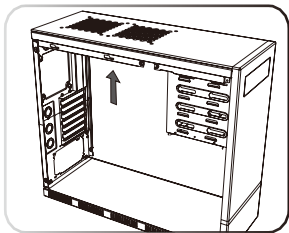
• Step 4



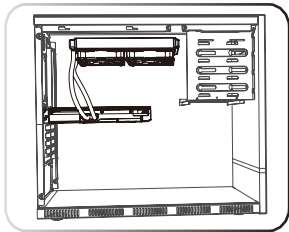
• Step 5



• Step 6



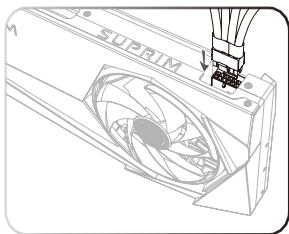
• Step 7



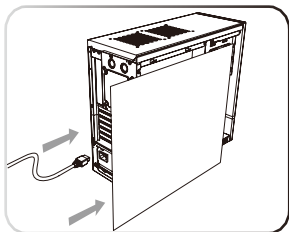
- Align the graphics card's radiator to the available ventilation holes of the computer case. (the radiator placement may vary per computer case)
- Secure the radiator to the computer case with the supplied screws. Note: Rotate the tubes to a proper position for the following installation in the case.

8. Connect the required 16-pin power connector to the graphics card.
9. Close the case, re-connect the power cable and turn on the PC.

• Step 8



• Step 9



msi[®]



MSI.COM



SUPPORT



SOCIAL MEDIA