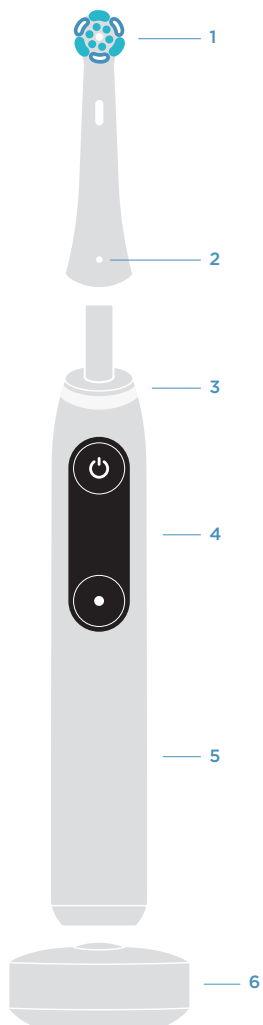
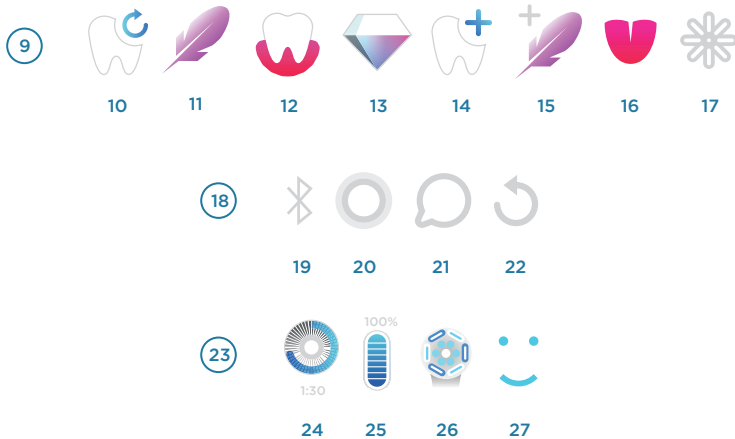


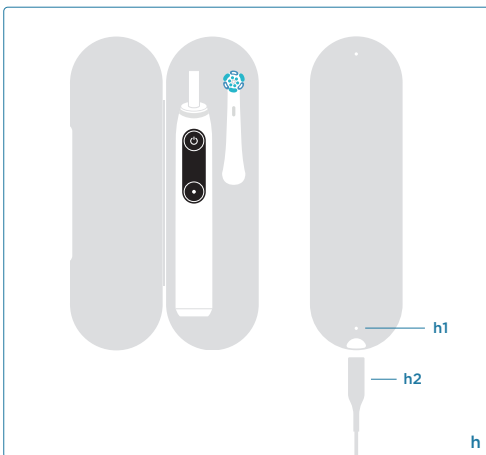
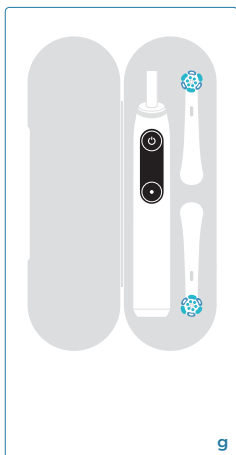
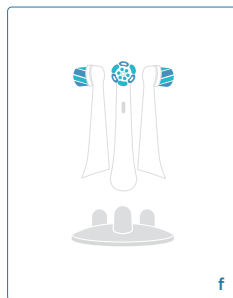
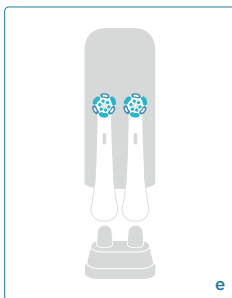
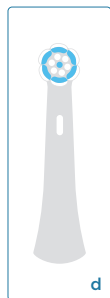
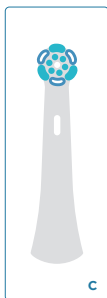
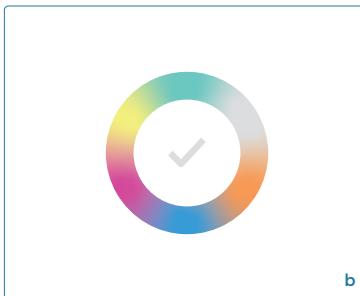
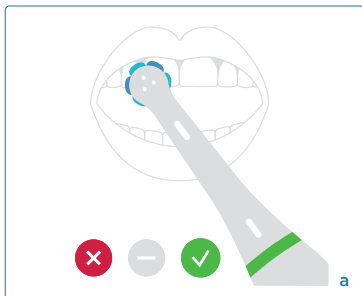
Stapled booklet, 120 x 170 mm, 22 pages (incl. 6 pages cover)

P&G RESTRICTED









Description

- 1** Brush head
- 2** Brush head identification symbol
- 3** Smart Ring
- 4** Display
- 5** Handle
- 6** Charger
- 7** On/off button
- 8** Mode button
- 9** Interactive Display features
- 10** Mode «Daily Clean»
- 11** Mode «Sensitive»
- 12** Mode «Gum Care»
- 13** Mode «Whitening»
- 14** Mode «Intense Clean»
- 15** Mode «Super Sensitive»
- 16** Mode «Tongue Clean»
- 17** Settings menu
- 18** Settings menu features
- 19** Manage *Bluetooth*® settings
- 20** Select/change colour of Smart Ring
- 21** Select/change language
- 22** Perform factory reset
- 23** Feedback features
- 24** Timer
- 25** Battery status
- 26** After-brush Smiley
- 27** Brush feedback

Accessories and features:

- a** Smart Pressure Sensor features
- b** Customize color of Smart Pressure Sensor via Oral-B App
- c** Brush head «Ultimate Clean»
- d** Brush head «Gentle Care»
- e** Brush head holder with cap
- f** Brush head holder stand
- g** Travel case
- h** Charging travel case
- h1** Charging light
- h2** Power supply (Smart Plug)
- i** Download Oral-B App and connect to *Bluetooth*® (see back page)

Note: Content may vary based on the model purchased.

English

DANGER

In order to reduce the risk of electrocution:

1. Do not use while bathing.
2. Do not place or store the charger/charging stand, power cord or charging travel case where it can fall or be pulled into a tub or sink.
3. Do not place the charger/charging stand, power cord or charging travel case in water or other liquid.
4. Do not reach for a charger/charging stand, power cord or charging travel case that has fallen into water. Unplug immediately.


WARNING

To reduce the risk of burns, electrocution, fire or injury:

1. Close supervision is necessary when this product is used by, on, or near children or persons with disabilities.
2. Use this product only for its intended use as described in this manual.
Do not use attachments not recommended by the manufacturer.
Only use the charger provided with your appliance.
3. Keep cord away from heated surfaces.
4. Never drop the appliance or insert any object into any opening of the appliance.
5. Never operate this product if it has a damaged cord or plug, if it is not working properly, if it has been dropped or damaged or if it has been dropped into water. If any of these occur, please contact a service center and return the product for examination and repair.
6. Do not use on self when drowsy or on another who is drowsy or sleeping.
7. Do not use outdoors or operate where aerosol (spray) products are being used or where oxygen is being administered.

IMPORTANT

1. Periodically check the entire product/cords/accessories for damage. A damaged or non-functioning unit should no longer be used. If the product/cords/accessories are damaged, take it to an Oral-B Service Center.
2. Do not touch the power plug with wet hands. This can cause an electric shock.
3. When unplugging, always pull the power plug instead of the cord. Avoid sharp bending, jamming or squeezing of the cord.
4. Do not modify or repair the product. This may cause fire, electric shock or injury. Consult your dealer for repairs or contact an Oral-B Service Center.
5. This appliance contains batteries that are non-replaceable. The appliance has no user serviceable parts. Do not open and disassemble device except when disposing of the battery. Follow handling and disposal instructions of the battery/device described in this manual.
6. Do not use on children under age 3.

7. This toothbrush is a personal care device and is not intended for use on multiple patients in a dental practice or institution.
8. Only use the charger and/or special cord set (smart plug) with integrated Safety Extra Low Voltage power supply provided with your appliance.
Do not exchange or tamper with any part of it, otherwise there is risk of an electric shock. If charging stand/charging travel case is marked with , only use Braun/Oral-B special cord set (smart plug) with this identification.
9. Small parts may come off, keep out of reach of children.

CAUTION

To avoid brush head breakage which may generate a small parts choking hazard or damage teeth:

- Prior to each use, ensure the brush head fits well. Discontinue use of the toothbrush, if brush head no longer fits properly. Never use without a brush head.
- If the toothbrush handle is dropped, the brush head should be replaced before the next use even if no damage is visible
- Replace brush head every 3 months or sooner if brush head becomes worn.
- Clean brush head properly after each use (see «Cleaning recommendations» paragraph). Proper cleaning ensures the safe use and functional life of the toothbrush.

If you are undergoing treatment for any oral care condition, consult your dental professional prior to use.

SAVE THESE INSTRUCTIONS

Important Information

- This device is compliant with safety standards for electromagnetic devices. As the toothbrush and the charger encloses magnets, keep away from pacemakers or other implanted medical devices and consult your doctor or manufacturer of implanted devices if you have any questions about using Oral-B.
- Your toothbrush can be used with your smartphone (find details under «Connecting your toothbrush to your Smartphone»). To avoid electromagnetic interference and/or compatibility conflicts, deactivate *Bluetooth* on your toothbrush handle (4) before using it in restricted surroundings, such as aircrafts or specially marked areas in hospitals.

- Deactivate *Bluetooth* by entering the Settings menu on the display -> *Bluetooth* -> disable. Follow the same procedure to reactivate *Bluetooth* again.
- Persons with pacemakers should always keep the toothbrush more than six inches (15 centimeters) from the pacemaker while turned on. Anytime you suspect interference is taking place, deactivate *Bluetooth*.

Charging Travel Case (h):

For satisfying RF exposure compliance requirements, body-worn operations are restricted to belt-clips, holsters or similar accessories that have no metallic component in the assembly and must provide at least 7.9 inches (20 cm) separation between the device, including its antenna, and the user's body.

Specifications

For voltage specifications refer to the bottom

of the charging unit.
Noise level: 62 dB (A)

First use

Please wake up your toothbrush by pressing the on/off button (6) and follow the instructions on the display to get started for first time setup. If not further instructed on the display, you may toggle with the mode button (7) and select with the on/off button (6).

You may change the settings via the settings menu at any time.

Charging and Operating

Your toothbrush has a waterproof handle, is electrically safe and designed for use in the bathroom.

- To charge the battery place the toothbrush on the plugged-in charger (5).
- The charge level is indicated on the display. Once is fully charged (100%) the display turns off. A full charge typically takes 6 hours and enables at least 2 weeks of regular brushing (twice a day, 2 minutes).
- If the battery is running low the motor reduces its speed and the Smart Ring (3) blinks in red. Once the battery is empty (0%), the motor stops; it will need at least a 30-minute charge for one usage.
- You can always store the handle on the plugged-in charger to maintain it at full power; a battery overcharge is prevented by device.

Note: Store handle at room temperature for optimal battery maintenance.

Caution: Do not expose handle to temperatures higher than 50°C / 122°F.

Using your toothbrush

Start Brushing

Place the brush head (1) on the handle (4). A small gap should remain between handle and brush head.

Lift the toothbrush off the plugged-in charger (5) or simply pick it up to wake up the handle (display turns on). Wet brush head and apply any kind of toothpaste. To avoid splashing, guide the brush head to your teeth before switching the handle on by pressing the on/off button.

Note: Display turns off after 20 seconds. Press on/off button (6) to activate display again.

8

Guide the brush head from tooth to tooth brushing the outsides, the insides and the chewing surfaces. Brush all four quadrants of your mouth equally. You may also consult your dentist or dental hygienist about the right technique for you.

After Brushing, the display gives you feedback based on your brushing time (except for «Tongue Clean» mode).

In the first days of using any electric toothbrush, your gums may bleed slightly. In general, bleeding should stop after a few days. Should it persist after 2 weeks, please consult your dentist or dental hygienist. If you have sensitive teeth and/or gums, Oral-B recommends using the «Sensitive» modes (optional in combination with an Oral-B «Sensitive» brush head (b)).

Timer

The timer signals with a short stuttering sound at 30-seconds intervals to move to the next quadrant of your mouth. A long stuttering sound indicates the end of the professionally recommended 2-minute brushing time.

The timer memorizes the elapsed brushing time, even when the handle is briefly switched off during brushing. The timer resets if pausing longer than 30 seconds or placing the handle on the plugged-in charger.

Note: During the use of the Oral-B App, the timer may be deactivated for some features.

Note: You can also customize the timer settings via Oral-B App.

Pressure sensor

Brush with the right pressure indicated with a green Smart Ring (3) light. If too much pressure is applied, it lights up in red reminding you to reduce pressure. If the Smart Ring illuminates in white (or your pre-selected color), we recommend to apply more pressure.

During high pressure the brush head movement will be reduced (in «Daily Clean», «Intense Clean» and «Sensitive» modes).

Periodically check the operation of the pressure sensor by pressing moderately on the brush head during use.

Note: During the use of the Oral-B App, the pressure sensor may be deactivated for some features.

Note: Pressure sensor is deactivated during «Tongue Clean» mode

Brushing modes (depending on model)

Your toothbrush offers different brushing modes indicated on the display:

«**Daily Clean**» (9) – Standard mode for daily cleaning

«**Intense Clean**» (13) – For an extraordinary clean feeling (operated with a higher frequency)

«**Sensitive**» (10) – Gentle, yet thorough cleaning for sensitive areas

«**Super Sensitive**» (14) – Super gentle cleaning for extra sensitive areas

«**Gum Care**» (12) – Gentle massage of gums

«**Whitening**» (11) – Polishing for occasional or everyday use

«**Tongue Clean**» (15) – Tongue cleaning for occasional or everyday use

When operating the «Tongue Clean» mode, we recommend using a «Sensitive» brush head (b). You can brush your tongue either with or without toothpaste. Brush the whole area of your tongue systematically in gentle movements. The recommended brushing time is 20 seconds; indicated with a flashing light of the Smart Ring.

Mode setting:

You may first choose your default mode by pressing the mode button (7) successively once the handle is awake (display turned on). Select a mode by pressing the on/off button (6). Your toothbrush starts in the selected default mood.

You may also change modes during brushing.

Note: You can also customize the mode settings via Oral-B App.

Smart Ring features

Your toothbrush is equipped with a Smart Ring (3) that has various functionalities indicated via different colors of light:

White (default) = Operating indicator (choose individual color via Oral-B App settings)

Red = high pressure indicator / low battery indicator

Green = recommended pressure indicator

Blue = *Bluetooth*® pairing indicator

Orange = Error indicator (follow display messages)

Display features

Turn on the display by pressing the on/off button (6). If not further instructed on the display,

you may toggle with the mode button and select with the on/off button.

«**Mode selection**» (9-15) – toggle by pressing the mode button and select with on/off button.

«**Settings**» (16) – toggle through all modes to select the settings menu by pressing the on/off button:

-> manage *Bluetooth* settings (de/activate, disable) (18)

-> select/change color of Smart Ring (19)

-> select/change language (20)

-> perform factory reset (21)

«**Timer** » (23) – displays brushing time. Can be customized via Oral-B app.

«**Battery status**» (24) – shows battery status after use, when charging or when battery is low.

«**Brush head exchange reminder**» (25) – reminds you when to replace your brush head. Can be customize via Oral-B App.

«**After-brush feedback**» (26) – brushing score is indicated with a smiley face (except with Tongue clean mode)

«**Greeting messages**» when handle is picked up, lifted off the plugged-in charger or when you press the on/off button.

«**Error messages**» – «outside operating limits»: you are operating or charging outside standard temperatures and/or above standard battery current.

Brush heads

Oral-B offers you a variety of different Oral-B brush heads (a/b) that fit your Oral-B toothbrush handle.

Our **oscillating-rotating brush heads** can be used for tooth-by-tooth precision cleaning. Most Oral-B brush heads feature light blue INDICATOR[®] bristles to help you monitor brush head replacement need. With thorough brushing, twice a day for two minutes, the blue color will fade halfway approximately within 3 months, indicating the need to exchange your brush head. If the bristles splay before the color recedes, you may exert too much pressure on teeth and gums.

Connecting your toothbrush to your Smartphone

The Oral-B App is available for smartphones running iOS or Android operating systems. It can be downloaded for free from App

Store^(SM) / Google Play™ or you may scan the QR code in the front pages of this manual (g).

- Launch the Oral-B App. It will guide you through the entire *Bluetooth* pairing procedure. You may also find it under the App's settings (Settings -> Toothbrush).

Note: Oral-B App functionality is limited if *Bluetooth* is deactivated on your smartphone (for directions please refer to your smartphone's user manual).

- Pairing is indicated via a blue pulsing Smart Ring light on your handle. Any App instructions will be displayed on your smartphone.
- You may change *Bluetooth* setting at any time on your handle via the display -> Settings -> *Bluetooth* activated/deactivated.
- Keep your smartphone in close proximity (within 5m distance) when using it with the handle. Make sure the smartphone is safely positioned in a dry place.

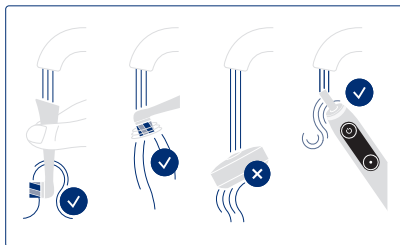
Note: Your smartphone must support *Bluetooth* 4.0 (or higher)/*Bluetooth* Smart in order to pair your handle.

Compatible smartphones are listed in App Store^(SM) or Google Play™.

Caution: Follow your smartphone's user manual to ensure your phone/charger is designed for use in a bathroom environment.

Cleaning recommendations

After brushing, rinse your brush head under running water with the handle switched on. Remove the brush head and clean the handle and brush head separately. Make sure water runs inside the top of the handle as well as inside the brush head. Wipe all parts dry before reassembling. Unplug the charger before cleaning. Clean the charger regularly with a damp cloth only. Please check individual cleaning instructions for each accessory in its «Accessories» paragraph.



Accessories

(depending on model)

Charging Travel Case (f)

- To charge your handle (4) place it in the charging travel case (f) and
- connect it to an electric outlet, using the extra power supply (f2) provided. The power supply may be used for all global mains voltage ranges (100 – 240V).
- The flashing light (f1) of the charging travel case indicates that the handle is charging. Once the handle is fully charged the light turns off. A full charge typically takes 6 hours.
- The outer and inner case should be cleaned with a damp cloth only. Make sure that the handle and brush head are completely dry before storing in the travel case.

Note: Clean stains on travel case surface immediately. Store travel case in a clean and dry place.

Travel Case (e)

Store the clean and dry toothbrush/brush heads in the travel case (e).

The outer and inner case should be cleaned with a damp cloth only.

Note: Clean stains on travel case surface immediately. Store travel case in a clean and dry place.

Refill holder (d)/Refill holder with cap (c)

You may store your cleaned refills on the pins of the refill holders. Make sure refills are dried before closing the cap. Refill holders and cap are dishwasher-safe.

Subject to change without notice.

Environmental Notice

Product contains batteries and/or recyclable electric waste.

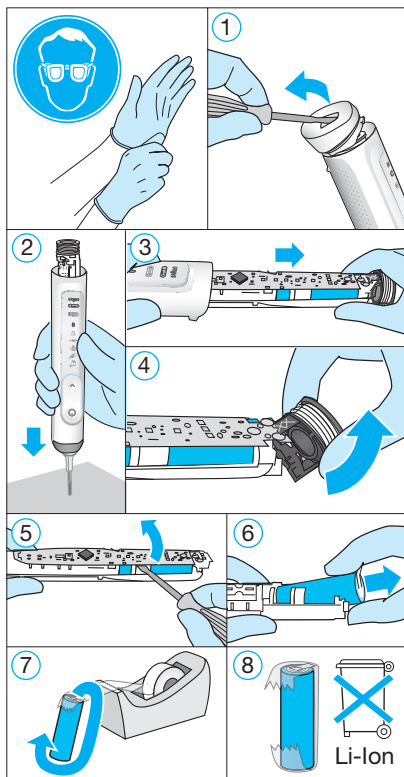
For environment protection do not dispose in household waste, but for recycling take to electric waste collection points provided in your country.



Battery removal at the end of the product's useful life

Do not disassemble the product except when disposing of the battery. Run down battery before removing. When taking out the battery for disposal, use protective clothing (gloves,

safety glasses, etc.) to omit skin contact whilst leaking batteries. Use caution not to short the positive (+) and negative (-) terminals. Insulate terminals (e.g. with tape) and put the battery in a plastic bag for disposal.



Open the handle as shown, remove the battery and dispose of it according to local environmental regulations.

Caution! Opening the handle will destroy the appliance and invalidate the warranty.

Information

Bluetooth® radio module

Although all indicated functions on the *Bluetooth* device are supported, Oral-B does

not ensure 100% reliability in connection, and feature operation consistency. Operation performance and connection reliability are direct consequences of each individual *Bluetooth* device, software version, as well as the operating system of those *Bluetooth* devices and company security regulations implemented on the device. Oral-B adheres to and strictly implements the *Bluetooth* standard by which *Bluetooth* devices can communicate and function in Oral-B toothbrushes. However, if device manufacturers fail to implement this standard, *Bluetooth* compatibility and features will be further compromised and the user may experience functional and feature-related issues. Please note that the software on the *Bluetooth* device can significantly affect compatibility and operation.

1) Warranty – Exclusions and Limitations

This limited warranty applies only to the new products manufactured by or for The Procter & Gamble Company, its Affiliates or Subsidiaries («P&G») that can be identified by the Braun / Oral-B trademark, trade name, or logo affixed thereto. This limited warranty does not apply to any non-P&G product including hardware and software. P&G is not liable for any damage to or loss of any programs, data, or other information stored on any media contained within the product, or any non-P&G product or part not covered by this limited warranty. Recovery or reinstallation of programs, data or other information is not covered under this limited warranty.

This limited warranty does not apply to (i) damage caused by accident, abuse, misuse, neglect, misapplication, or non-P&G product; (ii) damage caused by service performed by anyone other than Braun or authorized Braun service location; (iii) a product or part that has been modified without the written permission of P&G, and (iv) damage arising out of the use of or inability to use the Oral-B Smartphone stand/puck, Smartphone mirror holder, or charging travel case («Accessories»).

2) Using your smartphone holder

The Oral-B Accessories included in the package have been designed to provide you with a convenient way to position your smartphone while you are using the Oral-B app. Try multiple orientations of your smartphone in the Oral-B smartphone holder prior to use to

determine the best positioning of your smart-phone in the holder. Be sure to try this in a manner which will not harm your smartphone if it falls out of the stand.

Do not use in automobiles.

LIMITATION OF LIABILITY

TO THE EXTENT PERMITTED BY APPLICABLE LAW, IN NO EVENT SHALL P&G ITS DISTRIBUTORS OR SUPPLIERS BE LIABLE TO YOU OR ANY THIRD PARTY FOR ANY DIRECT, INDIRECT, INCIDENTAL, CONSEQUENTIAL, SPECIAL, EXEMPLARY OR PUNITIVE DAMAGES, OF ANY NATURE WHATSOEVER, ARISING OUT OF THE USE OF OR INABILITY TO USE THE ORAL-B ACCESSORIES, INCLUDING, WITHOUT LIMITATION, INJURY TO PERSONS, PROPERTY DAMAGE, LOSS OF VALUE OF ANY THIRD PARTY PRODUCTS THAT ARE USED IN OR WITH THE ORAL-B ACCESSORIES, OR LOSS OF USE OF THE ORAL-B ACCESSORIES OR ANY THIRD PARTY PRODUCTS THAT ARE USED IN OR WITH THE ORAL-B ACCESSORIES, EVEN IF P&G HAS BEEN ADVISED OF THE POSSIBILITY OF SUCH DAMAGES. WITHOUT LIMITING THE FOREGOING, YOU UNDERSTAND AND AGREE THAT P&G HAS NO LIABILITY FOR ANY DAMAGE OR DESTRUCTION TO CONSUMER ELECTRONICS DEVICES OR OTHER PERSONAL PROPERTY THAT ARE CONTAINED ON OR EXTERIOR TO THE ORAL-B ACCESSORIES, OR ANY LOSS OF DATA CONTAINED IN THE FOREGOING DEVICES. IN NO EVENT SHALL ANY RECOVERY AGAINST ORAL-B EXCEED THE ACTUAL PRICE PAID FOR THE PURCHASE OF THE PRODUCT.

Warranty replacement brush heads

Oral-B warranty will be voided if electric rechargeable handle damage is found to be attributed to the use of non-Oral-B replacement brush heads.

Oral-B does not recommend the use of non-Oral-B replacement brush heads.

- Oral-B has no control over the quality of non-Oral-B replacement brush heads. Therefore, we cannot ensure the cleaning performance of non-Oral-B replacement brush heads, as communicated with the electric rechargeable handle at time of initial purchase.
- Oral-B cannot ensure a good fit of non-Oral-B replacement brush heads.
- Oral-B cannot predict the long-term effect of non-Oral-B replacement brush heads on handle wear.

All Oral-B replacement brush heads carry the Oral-B logo and meet Oral-B's high quality standards. Oral-B does not sell replacement brush heads or handle parts under any other brand name.

Trouble Shooting

Problem	Possible reason	Remedy
APP		
Handle does not operate (properly) with Oral-B App.	<ol style="list-style-type: none"> 1. Oral-B App is closed. 2. <i>Bluetooth</i> is not activated on smartphone. 3. <i>Bluetooth</i> is deactivated on handle. 4. <i>Bluetooth</i> connection to smartphone has been lost. 5. Your smartphone does not support <i>Bluetooth</i> 4.0 (or higher)/<i>Bluetooth</i> Smart. 6. Handle on plugged-in charger. 7. Outdated Oral-B App. 	<ol style="list-style-type: none"> 1. Launch Oral-B App. 2. Activate <i>Bluetooth</i> on smartphone (described in its user manual). 3. Activate <i>Bluetooth</i> via display Settings -> <i>Bluetooth</i> activated. 4. Pair handle and smartphone again via app settings. Keep your smartphone in close proximity when using it with handle. 5. Your smartphone must support <i>Bluetooth</i> 4.0 (or higher)/<i>Bluetooth</i> Smart in order to pair handle. Check App Store^(SM) or Google Play™ for compatible smartphones. 6. <i>Bluetooth</i> is deactivated while handle is placed on plugged-in charger. 7. Download latest Oral-B App.
Reset to factory settings.	Original App functionality wanted.	Enter via display Settings -> Factory Rest. Press on/off button to confirm.
TOOTHBRUSH		
Handle is not operating (during first use).	Battery has a very low charge level; handle does not operate.	Charge at least for 30 min.
Short stuttering sounds/flashing light after 2 minutes or handle does not operate any timer.	Timer has been modified/deactivated via App.	Use App to change timer settings or perform factory reset (see App Trouble Shootings).
Handle does not charge.	<ol style="list-style-type: none"> 1. Battery is at a very low charger level (0%); it may take up to 10-15min until display turns on. 2. Ambient temperature for charging is out of valid range (< 0°C and > 60°C). 	<ol style="list-style-type: none"> 1. Charge at least for 30min. 2. Recommended ambient temperature for charging is 5°C to 35°C.
Rattling/loud noise during brushing or turning on.	Brush head may not fit properly.	Check proper fit of brush head on handle (1mm gap needed).

FOR USA ONLY

Limited 2-Year Warranty

Oral-B warrants this appliance to be free of defects in material and workmanship for a period of two years from the date of original purchase at retail. If the appliance exhibits such a defect, Oral-B will, at its option, repair or replace it without cost for parts and labor. The product must be carried in or shipped, prepaid and insured (recommended), to an authorized Oral-B Service Center. Proof of date of original purchase is required.

The cost to ship the product to an authorized Service Center is the responsibility of the consumer, the cost to return the product to the consumer is the responsibility of Oral-B. This warranty does not cover finishes or normal wear, nor does it cover damage resulting from accident, misuse, dirt, water, tampering, unreasonable use, service performed or attempted by unauthorized service agencies, failure to provide reasonable and necessary maintenance, including recharging, or units that have been modified or used for commercial purposes.

This appliance is equipped with a *Bluetooth* Smart approved radio module. Failure to establish a *Bluetooth* Smart connection to specific smart phones is not covered under the device guarantee, unless the *Bluetooth* radio module of this appliance is damaged. The *Bluetooth* devices are warranted by their own manufacturers and not by Oral-B. Oral-B does not influence or make any recommendations to device manufacturers, and therefore Oral-B does not assume any responsibility for the number of compatible devices with our *Bluetooth* systems.

Oral-B reserves the right, without any prior notice, to make any technical modifications or changes to system implementation of device features, interface, and menu structure changes that are deemed necessary to ensure that Oral-B systems function reliably.

ALL IMPLIED WARRANTIES, INCLUDING ANY IMPLIED WARRANTY OF MERCHANTABILITY OR FITNESS FOR ANY PARTICULAR PURPOSE, ARE LIMITED IN DURATION TO TWO YEARS FROM DATE OF ORIGINAL PURCHASE. IN NO EVENT WILL ORAL-B BE RESPONSIBLE FOR CONSEQUENTIAL DAMAGES RESULTING FROM THE USE OF THIS PRODUCT.

Some states do not allow the exclusion or limitation of incidental or consequential damages, so the above limitation may not apply to you. This warranty gives you specific legal rights, and you may have other legal rights which vary from state to state.

How to obtain service in the USA

Should this product require service, please call 1-800-566-7252 to be referred to the authorized Oral-B Service Center closest to you.

To obtain service:

- A. Carry the product in to the authorized Oral-B Service Center of your choice or,
- B. Ship the product to the authorized Oral-B Service Center of your choice.
Pack the product well. Ship the product prepaid and insured (recommended).
Include a copy of your proof of purchase to verify warranty coverage, if applicable.

To obtain original Oral-B replacement parts and accessories:

Contact an authorized Oral-B Service Center. Please call 1-800-566-7252 to be referred to the authorized Oral-B Service Center closest to you.

*To order original Oral-B replacement parts and accessories
(including replacement brush heads) by phone:*

Please call 1-800-566-7252.

To speak to an Oral-B Consumer Service Representative:

Please call 1-800-566-7252.

FCC Compliance Statement

This device complies with Part 15 of the FCC rules. Operation is subject to the following two conditions: (1) this device may not cause harmful interference, and (2) this device must accept any interference received, including interference that may cause undesired operation.

Section 15.21 Information to user:

Changes or modifications not expressly approved by the party responsible for compliance could void the user's authority to operate the equipment.

Section 15.105 (b)

Note: This equipment has been tested and found to comply with the Limits for a Class B digital device, pursuant to Part 15 of the FCC Rules. These limits are designed to provide reasonable protection against harmful interference in a residential installation. This equipment generates, uses and can radiate radio frequency energy and, if not installed and used in accordance with the instructions, may cause harmful interference to radio communications. However, there is no guarantee that interference will not occur in a particular installation. If this equipment does cause harmful interference to radio or television reception, which can be determined by turning the equipment off and on, the user is encouraged to try to correct the interference by one or more of the following measures:

- Reorient or relocate the receiving antenna.
- Increase the separation between the equipment and receiver.
- Connect the equipment into an outlet on a circuit different from that to which the receiver is connected.
- Consult the dealer or an experienced radio/TV technician for help.

FOR CANADA ONLY

Limited 2-Year Warranty

In the event this appliance fails to function within the specified warranty period because of defects in material or workmanship, and the consumer returns the unit to an authorized service center, Braun Canada will, at its option either repair or replace the unit without additional charge to the consumer.

This warranty does not cover any product which has been damaged by dropping, tampering, servicing performed or attempted by unauthorized service agencies, misuse or abuse. This warranty excludes units which have been modified or used for commercial purposes.

This appliance is equipped with a *Bluetooth* Smart approved radio module. Failure to establish a *Bluetooth* Smart connection to specific smart phones is not covered under the device guarantee, unless the *Bluetooth* radio module of this appliance is damaged. The *Bluetooth* devices are warranted by their own manufacturers and not by Oral-B. Oral-B does not influence or make any recommendations to device manufacturers, and therefore Oral-B does not assume any responsibility for the number of compatible devices with our *Bluetooth* systems.

Oral-B reserves the right, without any prior notice, to make any technical modifications or changes to system implementation of device features, interface, and menu structure changes that are deemed necessary to ensure that Oral-B systems function reliably. To the extent allowed by law, Braun Canada shall not be responsible for loss of the product, loss of time, inconvenience, commercial loss, special or consequential damages. The provisions of this warranty are in addition to and not a modification of or subtraction from the statutory warranties and other rights and remedies contained in applicable provincial legislation.

How to obtain service in Canada

Should this product require service, please call 1-800-566-7252 to be referred to the authorized Oral-B Service Center closest to you.

To obtain service:

- A. Carry the product in to the authorized Oral-B Service Center of your choice or,
- B. Ship the product to the authorized Oral-B Service Center of your choice. Pack the product well. Ship the product prepaid and insured (recommended). Include a copy of your proof of purchase to verify warranty coverage, if applicable.

To obtain original Oral-B replacement parts & accessories:

Contact an authorized Oral-B Service Center.

Please call 1-800-566-7252 to be referred to the authorized Oral-B Service Center closest to you.

To speak to an Oral-B Service Representative:

Please call 1-800-566-7252.

IC Compliance Notice

This device complies with Industry Canada licence-exempt RSS standard(s).

Operation is subject to the following two conditions: (1) this device may not cause interference, and (2) this device must accept any interference, including interference that may cause undesired operation of the device.

Internet:

www.oralb.com

www.oralb.ca

www.braun.com

www.service.braun.com

Braun GmbH
Frankfurter Strasse 145
61476 Kronberg
Germany/Alemania/Allemagne

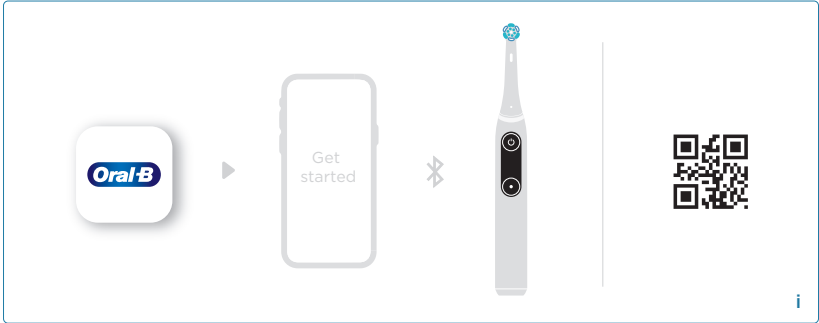
Charger Type 3768

Handle Type 3758

xxxxxxxx/IX-19

EN





XXXXXXXX