

EVOLV SHIFT

Thank you
for choosing

PHANTEKS

TABLE OF CONTENTS

■ 1. What's inside?

Specifications	3
Exploded view	4
Accessories	5

■ 2. Setup your system

Overview	6
Remove side panels	8
Cable management	9
Installing power supply	10
Adjust case feet	11
Installing motherboard	12
Installing drives	13
Installing cooling	14
Installing graphics card	16
Connecting front I/O	18

■ 3. Pro tips

Dust filters	19
Expand & upgrades	20

■ 4. Support

Contact us	21
Warranty	22



SPECIFICATIONS

CASE SPECIFICATIONS

Dimension (WxHxD)	170 mm x 470 mm x 274 mm 6.7 in x 18.5 in x 10.8 in
Height incl. Feet	484 mm (19.1 in)
Form Factor	Small Form Factor
Materials	Anodized aluminium panels Powder coated steel chassis Tempered glass side panels
MB Support	Mini ITX
PSU Support	SFX, SFX-L
Front I/O	2x USB 3.0, Power button, RGB button
Side Window	Yes, Tempered glass both sides

PCI SLOTS & DRIVE BAYS

PCI slots	2
3.5" HDD	1x
2.5" SSD	2x (can be upgraded to 3 if no 3,5" is installed)

FAN	120 mm	140 mm
Front	2x	2x (1 installed)
Bottom	1x	1x

RADIATOR	120 mm	140 mm
Front	120	140
Bottom	120	-

* For dual aio setup: max 120x27mm radiators.

INCLUDED ACCESSORIES

Premium fan 140 mm	1x
Power supply cover	1x
GPU bracket	1x
PCI-e x16 Risercable	1x
2.5" SSD bracket	2x

CLEARANCE

CPU Cooler	82 mm	(3.2 in)
Graphics card length	350 mm	(13.8 in)
Bottom Radiator	55 mm	(2.2 in)

* Depending on GPU length.

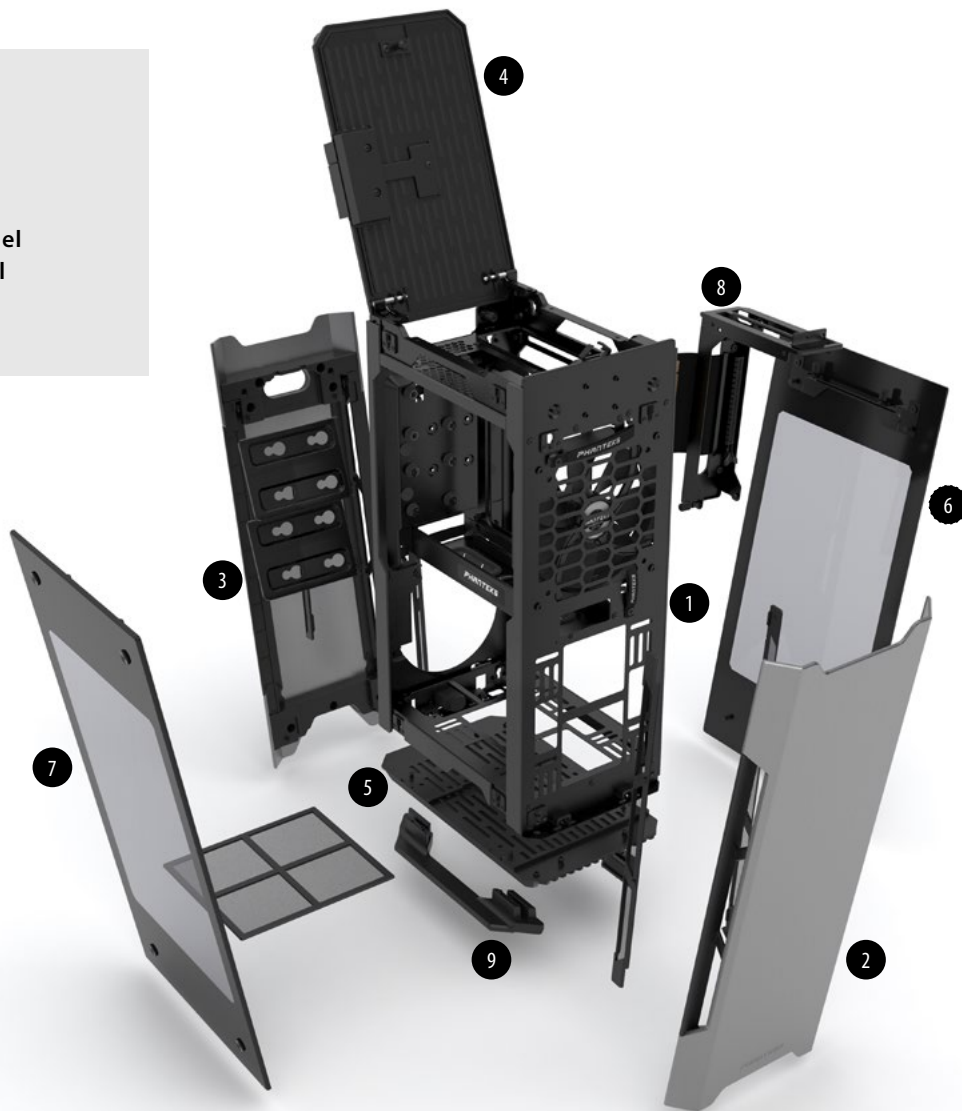
SUPPORT

Contact (International)	support@phanteks.com
Contact (North and South America)	support@phanteksusa.com
Warranty	5 Years*

*see page 22

EXPLODED VIEW

1. Chassis
2. Front Panel
3. Rear Panel
4. Top Grill
5. Bottom Grill
6. Right Side Panel
7. Left Side Panel
8. GPU Bracket
9. Case Feet



ACCESSORIES

2.5" SSD BRACKET

- 2 Pre-installed
- For 2.5" SSD



PREMIUM FAN 140 MM







- Pre-installed
- High static pressure
- Silent operation



ACCESSORY BAG

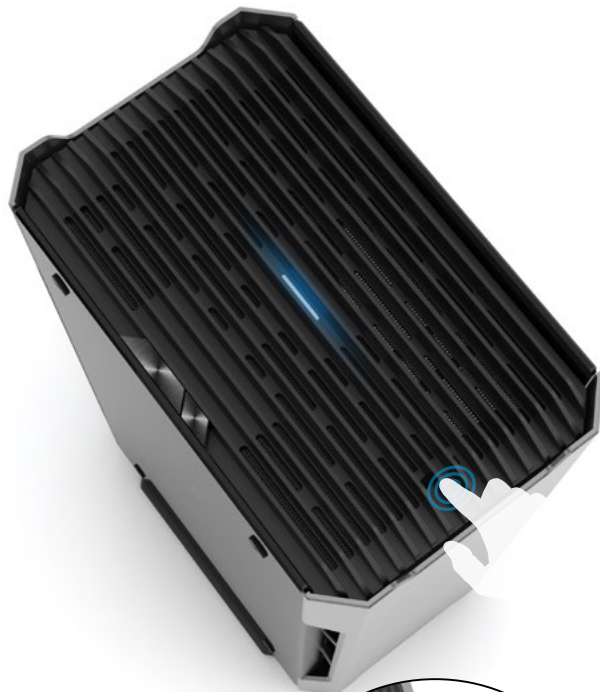
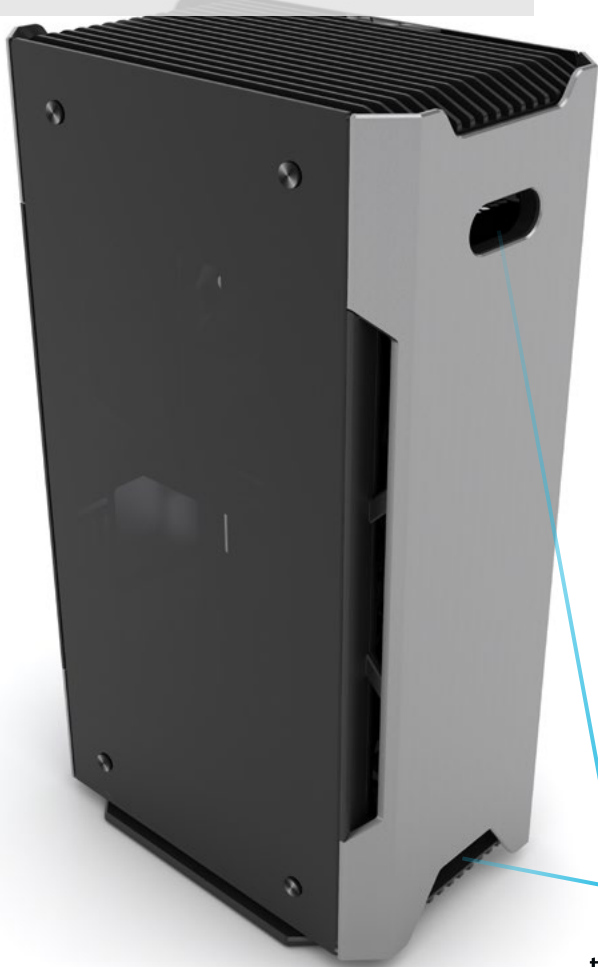
- 6x Zip Tie 150 mm
- Phanteks Logo Badge
- 4x Rubber Feet (for horizontal placement)

TOOLBOX

Fan screw  8x	M3x5 mm Motherboard /SSD  18x	6-32x6 mm PSU/HDD/GPU bracket  8x	6-32x8 mm HDD screw  4x	6-32x6 mm Thumb screw  1x
6-32x8 mm + Rubber rings Drop-N-Lock SSD  4x				

OVERVIEW

The Evolv Shift gives you the ultimate flexibility to place it anywhere in the house.



EASY ACCESS
Reach your best I/O
with just a press



CABLE ROUTING
Route your cables through the
top or bottom of the rear panel.

PLACE VERTICAL
Minimize the footprint.



PLACE HORIZONTAL
Use the four rubber feet
included in the toolbox.



REMOVE SIDE PANELS

REQUIRE:



FIRST TIME USE

1. LOOSEN THUMB SCREWS

2. SLIDE SIDE PANEL UP

3. TAKE SIDE PANEL OUT



LOOSEN:

8 x



PRO TIP

Each panel is mounted securely with 4 slide to lock pins and 2 captive thumb screws. Removing all side panels gives you full 360 degree access to the whole system.

CABLE MANAGEMENT



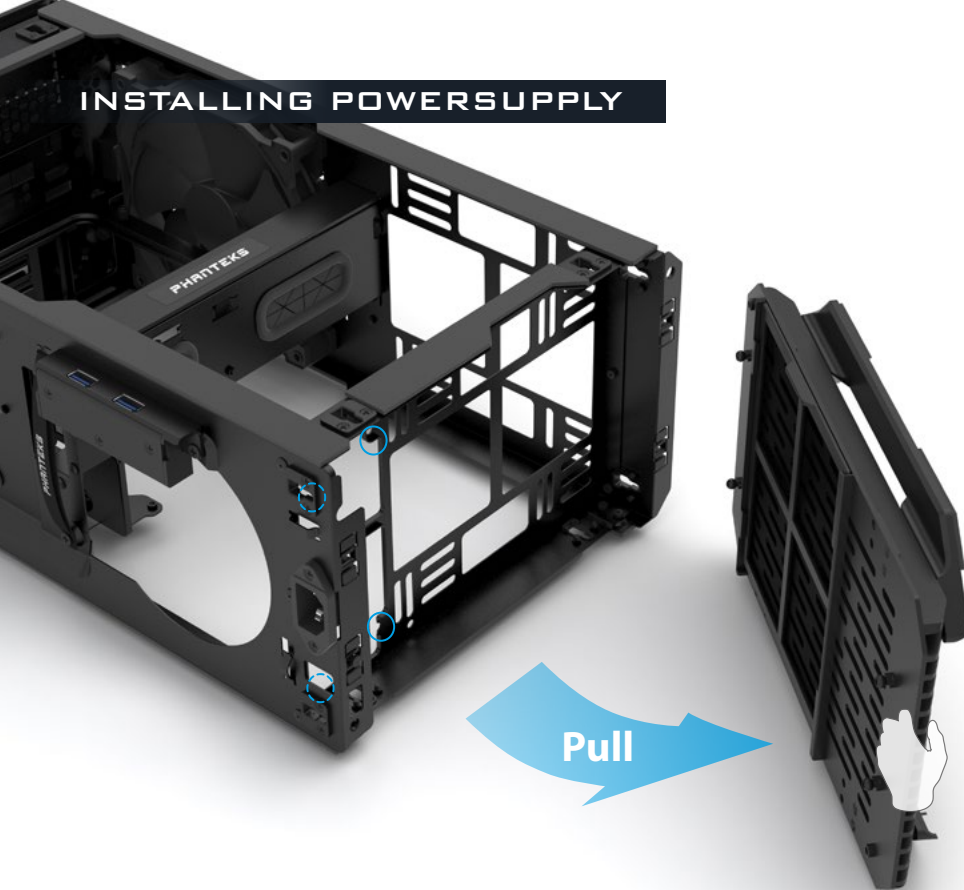
MOTHERBOARD CABLE COVER
Flip open for easy access.

DEDICATED CABLE AREA
Bundle excess cables with velcro ties.

CLEAR OUT ZONE
Keep cables out of this zone for easy
panel installation.

INSTALLING POWERSUPPLY

REQUIRE:



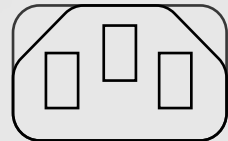
1. PULL OFF BOTTOM GRILL

2. INSTALL POWERSUPPLY

4 x



3.



CONNECT POWER ADAPTER



Don't forget to turn on the power switch on your powersupply.

ADJUST CASEFEET

REQUIRE:



VERTICAL



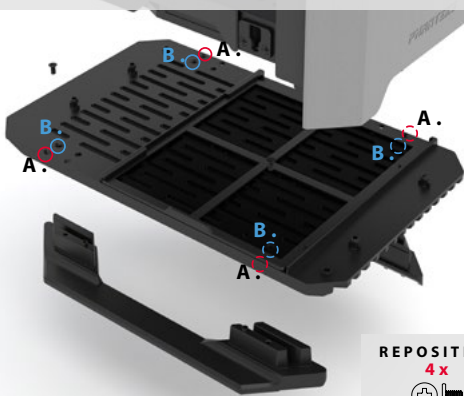
A. B. B. A.
CHANGE POSITION

HORIZONTAL

4x RUBBER FEET



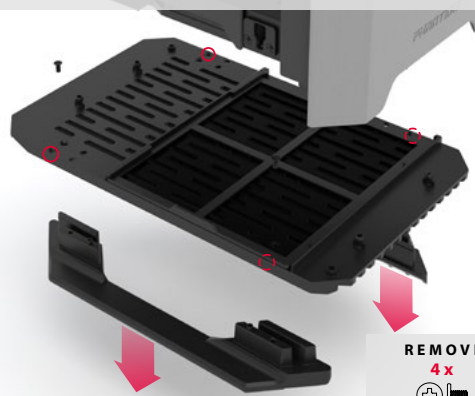
2X FOOT POSITIONS



REPOSITION:
4x



REMOVE FOOT



REMOVE:
4x

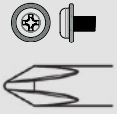


INSTALLING MOTHERBOARD

The motherboard is placed vertical with the rear I/O pointing upwards. Please consult your motherboard manual for more detailed instructions. **4 x**



REQUIRE:



Keep cables clear from fanblades.



These standoffs have a special collar to keep the motherboard in place when installing vertically.



4 x



INSTALLING DRIVES

1. EXTERNAL HDD OR SSD

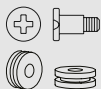
3.5" HDD



4 x

Mount the 3.5" HDD on the pre-installed rubber rings

2.5" SSD (OPTIONAL)



4 x

1. Install Drop-N-Lock Rubber rings



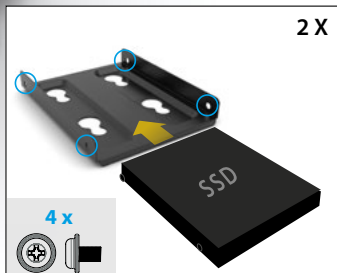
4 x

2. Install SSD Bracket

REQUIRE:



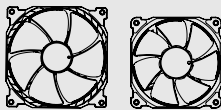
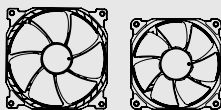
2. INTERNAL SSD



INSTALLING COOLING



FRONT

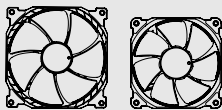


140
FAN

120
FAN



BOTTOM

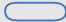



140
FAN

120
FAN



MOUNTING HOLES:

 120mm Radiator slots.

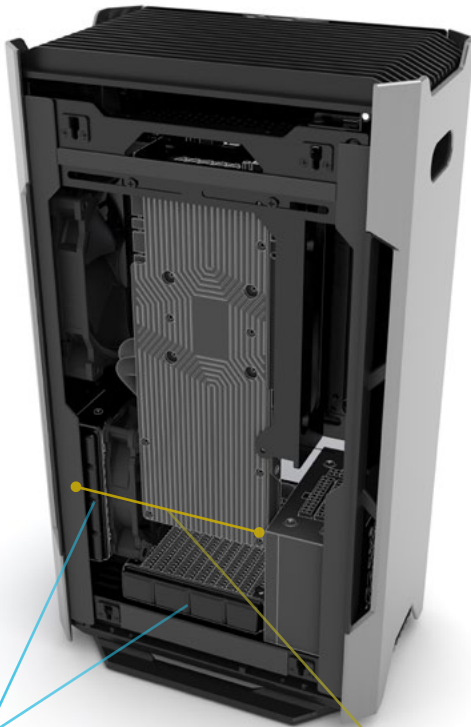
 120mm and 140mm Fan / Radiator slots.

REQUIRE:



DUAL AIO SETUP:

- Support for dual 120mm radiators / single 140mm radiator
- Max radiator thickness is 27mm.



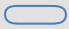
120mm Radiators

MAX 160mm clearance
Radiator+Fan+GPU



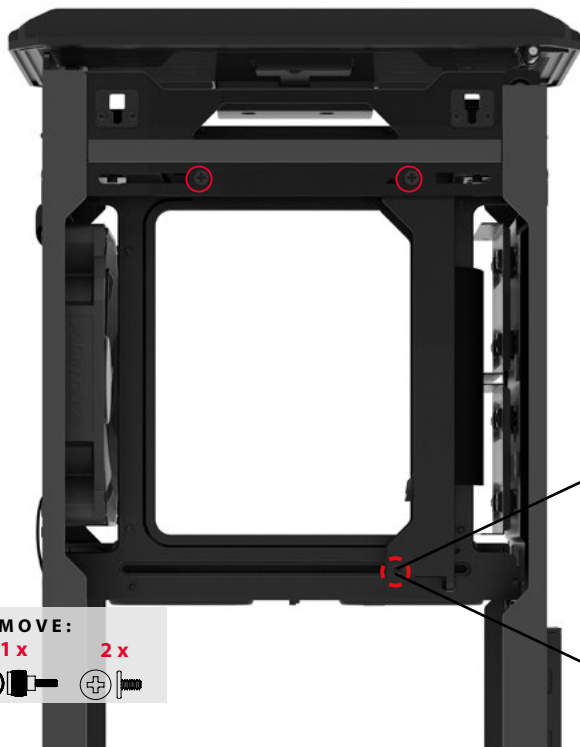
Tubing facing
window panel



For a Dual AIO setup, we recommend to use the horizontal slots  facing the radiators sideways.

INSTALLING GRAPHICS CARD

1. PREPARE GPU BRACKET

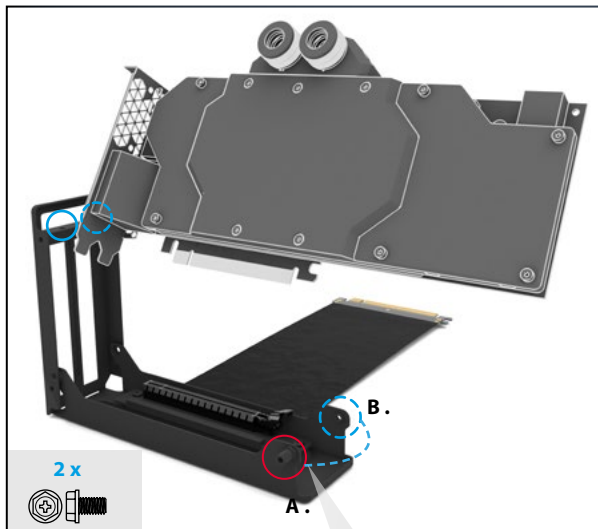


REMOVE:

1 x



2 x



PRO TIP The GPU can be installed in 2x different orientations. Re-position the stand-off screw accordingly.

We recommend to:

- A. Face cooler in for aircooled GPU.
- B. Face cooler out for watercooled GPU.



REQUIRE:



2. INSTALL GRAPHICS CARD

- 1 Slide GPU into the case
- 2 Secure with thumbscrew
- 3 Lock with case screws



PRO TIP

Slide the GPU bracket in the desired position with optimal clearance for your watercooling hardware, see page 15.

1 x

2 x



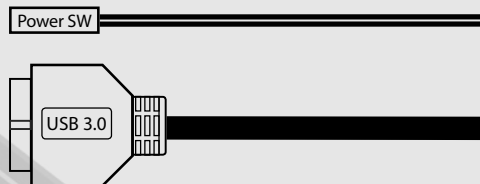
POWER BUTTON

- SHORT** **Short Press:** Turn on your system
- HOLD** **Press and hold:** Turn off your system

RGB BUTTON

- HOLD** **Press and hold:** LED On/Off
- SHORT** **Short Press:** Choose LED Color (10 colors)
- LONG** **Long Press:** Choose Mode
 - Mode 1: STATIC
 - Mode 2: BREATHING
 - Mode 3: COLOR CYCLE

TO MOTHERBOARD



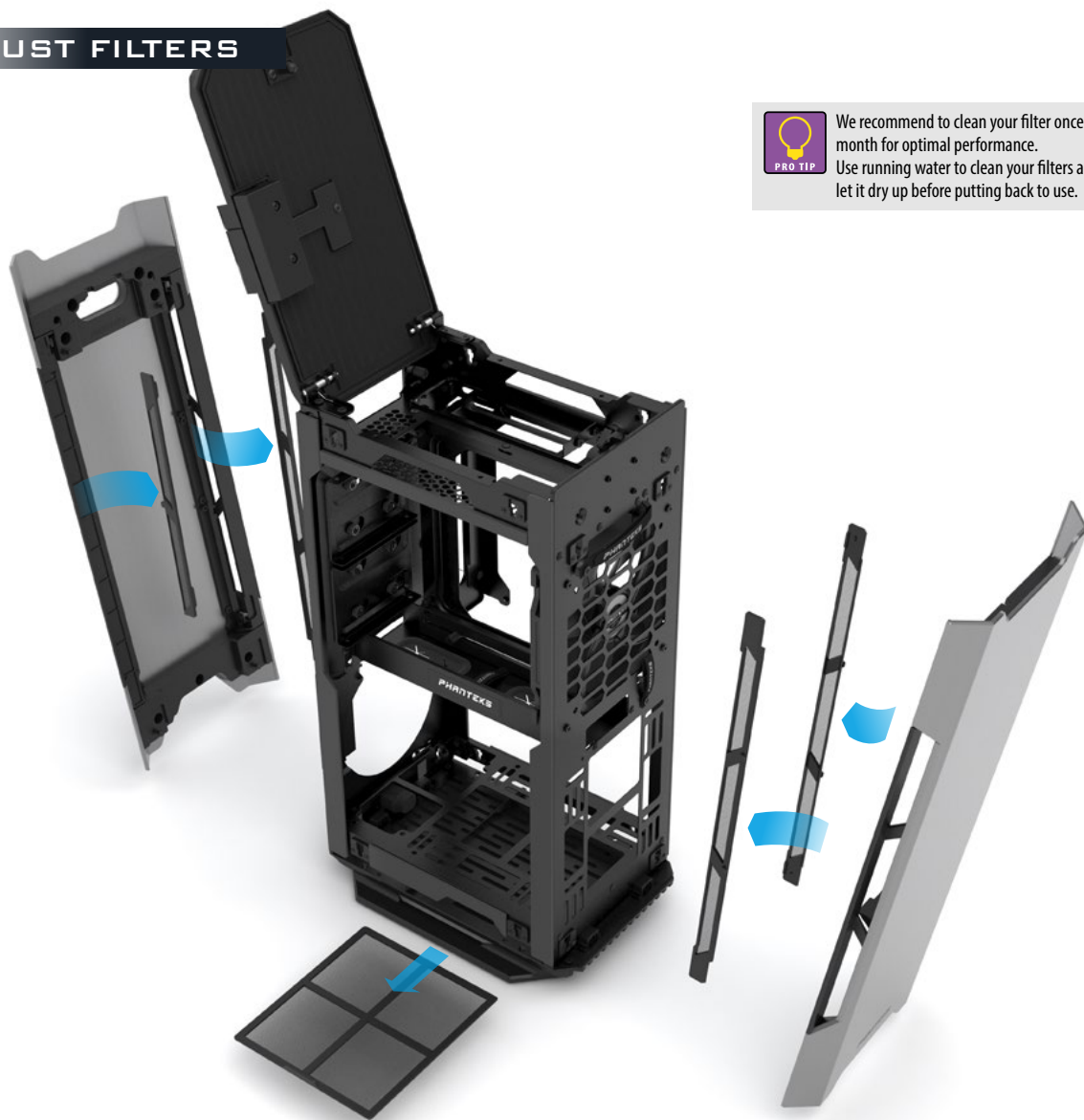
TO PSU



TO PHANTEKS RGB PRODUCTS



DUST FILTERS



We recommend to clean your filter once a month for optimal performance. Use running water to clean your filters and let it dry up before putting back to use.

EXPAND AND UPGRADE

2.5" SSD BRACKET

PH-SDBKT_01

The Evolv Shift has place for a third SSD bracket if there is no 3,5" HDD installed.



PHANTEKS PH-F120MP / PH-F140MP

The Evolv Shift supports up to 3 casefans.

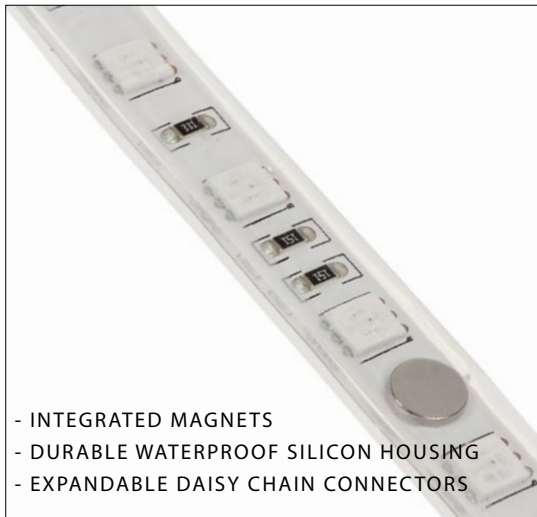
- High static pressure
- Silent operation
- 120 mm and 140 mm sizes
- Available in Black or White



MORE RGB

The RGB controller in the Evolv Shift supports up to 5 meters of LED strips. This allows you to expand your RGB lighting with any of our RGB products. Choose to control manually with a single button or connect the RGB controller to your motherboard with the adapter cable.

PHANTEKS LED strips



- INTEGRATED MAGNETS
- DURABLE WATERPROOF SILICON HOUSING
- EXPANDABLE DAISY CHAIN CONNECTORS

CONTACT US

As a Phanteks customer, you are priority number one. We have a dedicated team of employees across the globe working hard every day to make sure we deliver the superior experience you deserve. We are here for you. If you have a question or a concern about our products, we have numerous ways you can reach us. Please choose one most convenient for you to connect with our team.

CUSTOMER CARE

RMA and Technical Support

Hours : Monday-Friday 9:00-5:00 PST

Global Regions:

rma@phanteks.com

support@phanteks.com

North America and South America:

Phone number : +1(909)598-2115

support@phanteksusa.com

WARRANTY

PHANTEKS warrants its products to be free from defects in material and workmanship during the warranty period; when given normal, proper and intended usage. If a product proves to be defective in material or workmanship during the warranty period, PHANTEKS will, at its sole option, repair or replace the product with same product or similar product. The replacement product assumes the remaining warranty of the original product or 30 days, whichever provides longer coverage for the customer.

Duration of warranty:

1. FANS - 5 years
2. I/O Port - 2 years
3. LED On/Off Switch - 2 years
4. Chassis - 5 years
5. Front and Top Panels - 5 years

Please check www.phanteks.com/Warranty for more information.

PIANTEKS

PHANTEKS