

# Rowenta®



EN

FR

DE

ES

PT

NL

IT

CS

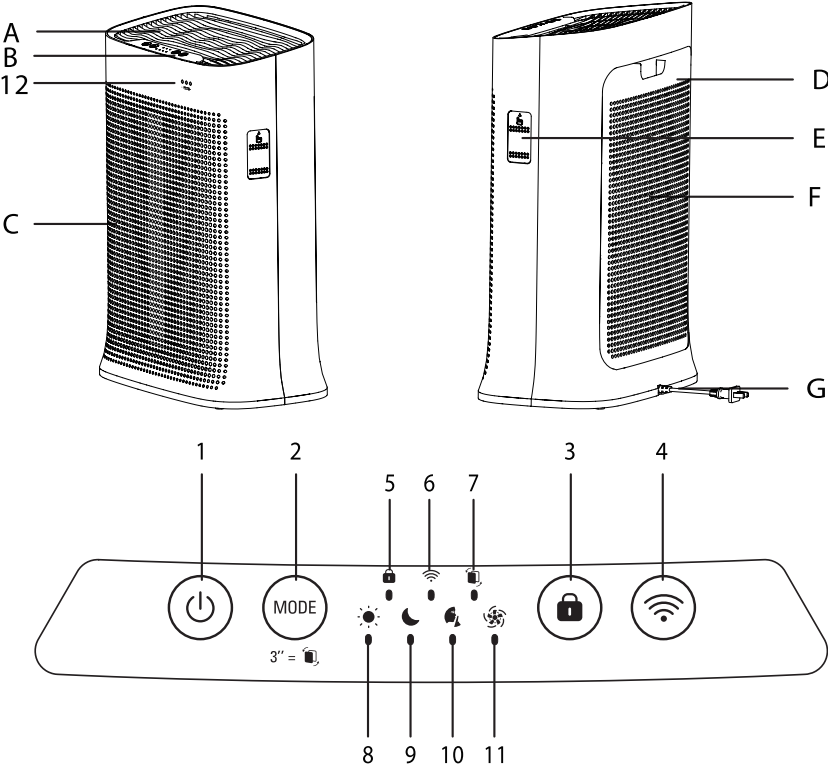
RO

BG

PURE AIR GENIUS PU3080

# SUMMARY

PRODUCT OVERVIEW	3
SAFETY TIPS	3
VERY IMPORTANT	4
INSTRUCTIONS	4
DISASSEMBLING / REASSEMBLING FILTERS	5
WHERE TO INSTALL THE APPLIANCE	6
BEFORE FIRST USE	6
OPERATION	6
HOW TO CONNECT YOUR PURIFIER TO INTERNET	7
CARE AND MAINTENANCE	8
STORAGE	9
IN THE EVENT OF A PROBLEM	9
WARRANTY	10
HELP PROTECT THE ENVIRONMENT!	10



## PRODUCT OVERVIEW

### Main Unit

- A** Air outlet
- B** Control panel
- C** Front panel
- D** Rear panel
- E** Sensor cover
- F** Air inlet
- G** Mains cable

### Control buttons

- 1** On/off button
- 2** Mode/Reset filter button
- 3** Child lock
- 4** Wi-Fi button

### Indicators

- 5** Child lock indicator
- 6** Wi-fi connection indicator
- 7** Replace filter indicator
- 8** Day time Auto mode indicator
- 9** Night time Auto mode indicator
- 10** Quiet mode indicator
- 11** Turbo mode indicator
- 12** Air quality indicator

EN


## SAFETY TIPS

**It is essential that you read these instructions carefully and observe the following recommendations:**

- For your safety, this appliance complies with the applicable standards and regulations (low voltage, electromagnetic compatibility, environmental directives, etc.).
- This appliance should not be used by persons (including children) with reduced physical, sensory or mental capacities or lack of experience and knowledge, unless they are supervised or have been given instructions beforehand concerning use of the appliance by a person responsible for their safety.
- Children should be supervised to ensure they do not play with the appliance.
- The appliance can be used by children aged 8 and over and persons with a lack of experience or knowledge or reduced physical, sensory or mental capacities, provided they are supervised, have been trained on the safe use of the appliance and are aware of the risks involved. Children must not play with the appliance.
- If the power cord is damaged, it must be replaced by the manufacturer, by its after-sales service or a similarly qualified person so as to avoid any danger.
- Children should not clean or perform maintenance on the appliance without being supervised.
- For maintenance operations, please refer to the "Maintenance" section.
- Keep the appliance and its power cord out of the reach of children aged under 8.
- This appliance is designed for domestic use only. It should not be used for industrial purposes.

- The warranty will be voided if damage occurs due to incorrect use.
- Do not operate this appliance in a very dusty and/or humid place or in a location with fire hazards.
- Before use, always make sure that the appliance, plug and power cord are in good condition.
- Never insert objects into the appliance (e.g. needles, etc.).
- Do not pull on the power cord or the appliance, even to unplug it from the wall power outlet.
- Unroll the full length of the cord before use.

## VERY IMPORTANT

- **Do not cover the air inlets or the outlet grid.**
- **Do not touch the appliance with wet hands.**
- **Never allow any liquid to enter the appliance.**
- **Never use the appliance in a humid place.**
- **Never use the appliance close to a heat source.**
- **Do not use the appliance close to flammable objects or products (curtains, aerosols, solvents, etc.).**
- **Never use the appliance in an inclined or horizontal position. Place the appliance on a flat, stable surface.**
- **In the case of prolonged absence: switch the appliance off using the on/off button  (1) and unplug it.**
- **Switch off and unplug your appliance before moving it.**
- **Unplug the air purifier during assembly and cleaning.**

## INSTRUCTIONS

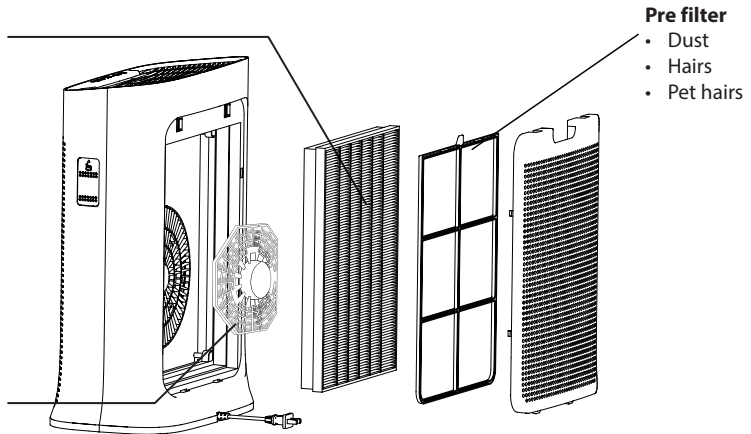
Rowenta Pure Air Genius enables you to breathe pure air in your home and protects your health with up to 4 filtration levels as described below. Each level is essential and traps specific pollutants :

### 2in1 Active Carbon & Allergy+ filter

- Smoke
- Unpleasant odors
- Chemical pollutants
- Volatile Organic Compounds (VOC)
- Allergen and Pollen
- Dust mite
- Germs and Molds
- Bacteria and Viruses

### NanoCaptur+ filter

- Formaldehyde

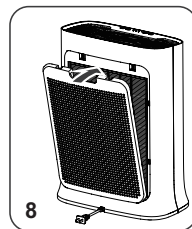
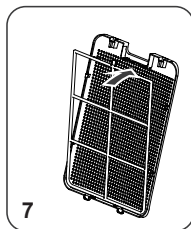
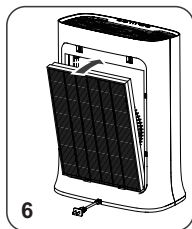
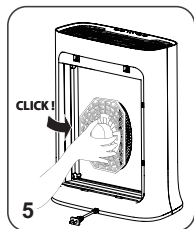
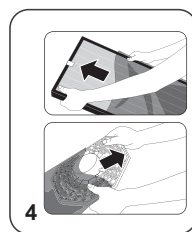
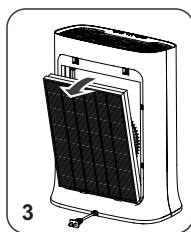
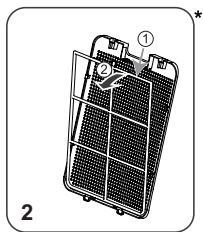
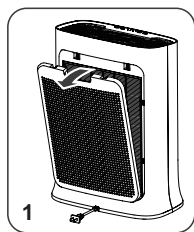


## « HOW TO ACHIEVE CLEANER INDOOR AIR »

In addition to using your Pure Air Genius, here are some tips on how to improve the quality of your indoor air:

- Ventilate the rooms for at least 10 min. every day, in summer and winter.
- Maintain your ventilation system.
- Limit the use of household products.
- Do not smoke indoors.
- Avoid home fragrances, incense sticks, scented candles, etc.
- Ventilate whenever any work is being conducted in your home and for several weeks afterwards.
- Avoid green plants that are allergenic or need frequent watering.

## DISASSEMBLING / REASSEMBLING FILTERS



EN



### « TIPS FOR CHANGING FILTERS »

- Avoid handling used filters if you suffer from allergies or asthma.
- Wear gloves when changing the filters, or wash your hands well afterwards.
- Put used filters directly into a closed, air-tight bag before throwing them away to avoid spreading pollutants.

## WHERE TO INSTALL THE APPLIANCE


Place the purifier on a flat, stable surface in the room requiring treatment.

To allow the air to circulate freely, avoid placing the appliance behind curtains, below a window, item, furniture, or shelf unit, or close to any other obstacle, and leave at least 50 cm of free space on each side of the appliance. Recommended to be used in ambient conditions lower than 35°C 70%RH (95°F).

## BEFORE USING THE APPLIANCE FOR THE FIRST TIME

**Make sure that the plastic packaging protecting the filters has been removed before using the appliance.**

Before the first use, ensure the voltage, frequency and power of your appliance suit your electric supply.








Your appliance can operate using an unearthed plug. It is a class II (double electrical insulation )

Before switching on your appliance, ensure that:

- the appliance is completely assembled as described in the safety instructions,
- the appliance is placed on a stable, horizontal surface,
- the appliance is positioned in accordance with the instructions given in this manual,
- the air inlets and the outlet grid are completely unobstructed,
- the filters and panel have been correctly installed (See section "Disassembling / Reassembling filters")

**IMPORTANT: You are advised to switch off and unplug the appliance when not in use.**

## OPERATION

- **Power button (1)** 
  - Press this button to turn the air purifier on/off.
- **Mode button (2)** 
  - AUTODAY and AUTONIGHT mode: if the air quality level is excellent then the device does not run.
  - Press this button to select one of the four modes. The corresponding indicator will turn on to indicate the selected mode.
    - Daytime auto mode: the fan speed is set to 1,2,3 or 4.
    - Nighttime auto mode: The fan speed is set to 1 or 2.
    - Quiet mode: The fan speed is set to minimum. Use this mode in quiet environments.
    - Turbo mode: The fan speed is set to maximum. Use this mode when air quality is poor.
- **Child lock (3)** 
  - The lock system prevents the purifier from being accidentally mis-set during operation.
  - To activate it, press the button (3) for 3 sec until the locked control panel indicator turns on. To exit this mode, press the button (3) again for 3 seconds, until the indicator turns off. When selected, the other buttons are locked.
- **Wi-Fi button (4)** 
  - Frequency band operated : 2400-2483,50 MHz
  - Maximum radio-frequency power : 20 dbm
  - To turn on or off the Wi-Fi function on your purifier, hold simultaneously the Wi-Fi button  and the child lock button  during 3 seconds.
  - When the Wi-Fi connection indicator  flashes it means that the purifier lost its connection.

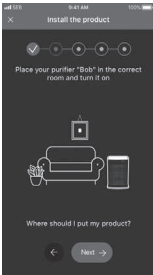
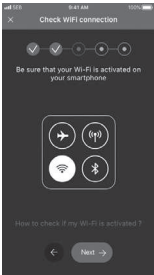
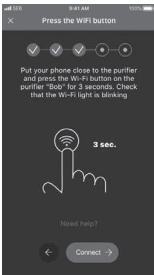
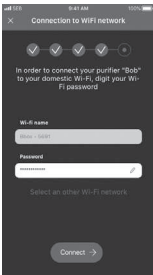

# HOW TO CONNECT YOUR PURIFIER TO INTERNET



## HOW TO CONNECT YOUR PURIFIER TO INTERNET ?

Download the app "Pure Air by Rowenta" & follow the instructions on your smartphone :

EN

<p>1. Sign in to create your Rowenta account if you are new. Or log in the app if you already have an account.</p>	<p>2. Make sure to stand close to the purifier during the pairing (2 meters maximum) and make sure the purifier is located near a strong Wi-Fi signal.</p> 	<p>3. Make sure your phone is connected to your local Wi-Fi network (you'll hear a "ding" sound and the Wi-Fi indicator will flash to indicate that your mobile device is successfully connected to Wi-Fi.)</p> 
<p>4. Turn your purifier on &amp; hold the Wi-Fi button for 3 seconds (you'll hear a "ding" sound and the Wi-Fi indicator will flash to indicate that your purifier is successfully connected to Wi-Fi.)</p> 	<p>5. Choose your Wi-Fi network and enter the network password to connect to your local Wi-Fi network.</p> 	<p>6. And you're done ! The Wi-Fi indicator lights to indicate that your purifier is successfully connected to Internet.</p> 

### What to do if you have trouble with the installation of the application:

Check compatibility on the website <https://www.compatibility.groupeseb.com/CompatibilityList-Pureair-Rowenta.pdf>

### Can multiple users pair to one device?

Of course ! New users just need to download the App « Pure Air by Rowenta », create an account and do the pairing.

### If the Wi-Fi in my home shuts off for a brief period will I lose control of my purifier via the app?

If the product lost its connection, the product will stop automatically after 24h.

• **Indication of air quality**

Air quality indicator (12) is located at the front panel (C) of the appliance. The 3 LED will indicate the air quality level:

Air Quality	Air quality indicator color
Excellent	Blue
Slight pollution	Green
Moderate pollution	Yellow
High pollution	Orange
Extreme pollution	Red

## CARE AND MAINTENANCE


Before performing any maintenance work, switch off the air purifier using the on/off button (1). Use a damp cloth to clean the surface of the product.

**Important:** Do not use any abrasive materials, as these may damage the surface of the product.

### Frequency of cleaning/replacing the filters :

Filter	Clean/replace	Frequency	Filter codes
Pre filter	Clean	Every 2 months	
2in1 Active Carbon & Allergy+ filter	Replace	Every 12 months	XD6231
NanoCaptur+ filter	Replace	Color changing (see color chart on filter) or every 12 months in case of no saturation.	XD6082

These figures are based on tests in which the air purifier is used for 8 hours per day in quiet mode.

You may need to replace the filters more often depending on the air quality and how often the air purifier is used. The filter replacement indicator (7)  will turn on when the filters need to be replaced and you will receive a notification on your mobile application. To replace the filters, please refer to the section "Disassembling / Reassembling filters".

**Important!** When the filter replacement indicator (7)  turns on, please check on the mobile application in order to know which filter has to be replaced. If two filters must be changed, please change them one by one. Change the second filter only after changing the first one and after resetting the first filter.

• The pre-filter can be cleaned with a vacuum cleaner or rinsed in water.

**Important:** Resetting the filter

After replacing the filter, press the mode button (2)  for 3 seconds to reset the filter settings.

#### Performing a force reset:

If you replace a filter before the end of its lifespan, press the mode button (2)  for 3 seconds to reset the filter settings.

#### Caution :

If the granules become "white opaque", filter needs to be removed from the purifier until the granules become transparent again.

If the opaque aspect persists, filter need to be changed.

If the granule become "crumbly", filter need to be changed.

The appliance efficiency can be reduced if the pre-filter is not cleaned regularly.

Never use a pre-filter that is still damp.

The pre-filter is the only filter which can be re-used and washed with water. The 2in1 Active Carbon & Allergy+ filter cannot be cleaned and re-used. Never wash with water. The 2in1 Active Carbon & Allergy+ filter must be replaced after the end of its lifespan. For optimum performance of the appliance, only use filters provided by Rowenta. If after the Nanocaptur+ filter granules become opaque white or/and crumbly, the filter needs to be changed.

Please note: certain filters may emit a temporary slight odour, due to the transport and storage conditions. This odour will vanish and is not dangerous for people.

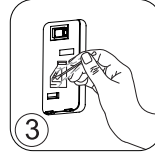
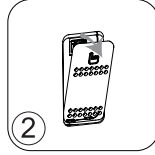
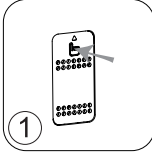


## Pollution sensors

The particle sensor need to be cleaned regularly (every 2 months) and appropriately.

**Make sure you turn off and unplug the appliance before cleaning the pollution sensors and follow the recommendations below:**

1. Clean the air inlet and outlet using a soft brush or cloth.
2. Open the sensor cover located on the left hand side of the appliance.
3. Lightly wet a cotton swab and remove any dust from the lens and the inlet/outlet. Wipe using a dry cotton swab.
4. Clean the sensor using a soft brush or vacuum cleaner.



### IMPORTANT:

**Never use a detergent or metal object to clean the sensors.**

**The efficiency of the sensors may be reduced if not cleaned regularly.**

**Cleaning frequency varies depending on the operating environment of the appliance. If it is used in a dusty environment, clean the sensors more frequently.**

## STORAGE

When you are not using the appliance, store it in a cool, dry place with ambient conditions no higher than 35°C (95°F) 70%RH.

## IN THE EVENT OF A PROBLEM

- Do not disassemble the appliance yourself. A poorly repaired appliance may be dangerous for the user.
- Check the troubleshooting table below before contacting an Approved Service Center:

Problem	Check	Solution
<b>The appliance does not switch on.</b>	Is the power cord connected?	Connect the power cord to a plug with the correct voltage.
	Are all the display elements off?	Press the on/off button and select the required function.
	Is there a power outage?	You can use your purifier once the power turns on again.
<b>The air flow does not change automatically.</b>	Is the appliance in manual mode?	Select the correct operating mode.
<b>The flow is a lot weaker than before.</b>	Does the filter need to be cleaned or replaced?	Check the filter cleaning and replacement frequencies and clean/replace the filter(s) if necessary.
<b>There is an unpleasant smell coming from the air outlet.</b>	Does the light still indicate poor air quality?	Check the filter cleaning and replacement frequencies and clean/replace the filter(s) if necessary.
<b>The air quality indicator does not change color.</b>	Is the sensor lens covered with dust?	Clean the sensor lens.

Problem	Check	Solution
<b>The purifier doesn't connect</b>	Is your phone connected to your personal Wi-Fi network at the beginning of the process?	Verify that you are conneted to your personal Wi-Fi network.
	The purifier doesn't seem to connect?	Check that your purifier is plugged in and turned on.
	The WI-FI led of your purifier is not flashing?	Hold the Wi-Fi button for 3 seconds.
	The first pairing didn't work?	Restart the product to retry.
	My phone is connected to the Wi-Fi but not the purifier?	Make sure the two devices are in close enough proximity to one another and close to the WIFI router.
	My phone isn't connecting to the Wi-Fi?	Check that your Wi-Fi router is connected to the Internet Check that the Wi-Fi password didn't change
<b>Why did the pairing not work?</b>	Check the compatibility	Supported encryption type: WPA_1/WPA_2, TIKP; PSK, AES Supported networks: 2,4 GHz (not 5Ghz)

## WARRANTY

Do not use the appliance and contact an Approved Service Centre if:

- your appliance has been dropped;
- your appliance or its power cord are damaged;
- your appliance no longer functions properly.

You can find a list of Approved Service Centres on the Rowenta international warranty card.

## HELP PROTECT THE ENVIRONMENT!



Your appliance contains many materials which can be recovered or recycled.

Leave it at a local waste collection point or take to an approved service center so that it can be processed.

These instructions can also be found on our internet site, at [www.rowenta.com](http://www.rowenta.com).