

CC 510 | CC 515 | CC 515 IP
CC 520 | CC 520 IP | CC 540
CC 550 | CC 550 IP



Quick Guide
Kurzanleitung
Guide rapide
Guida rapida

Instrucciones resumidas
Guía rápida
Beknopte handleiding

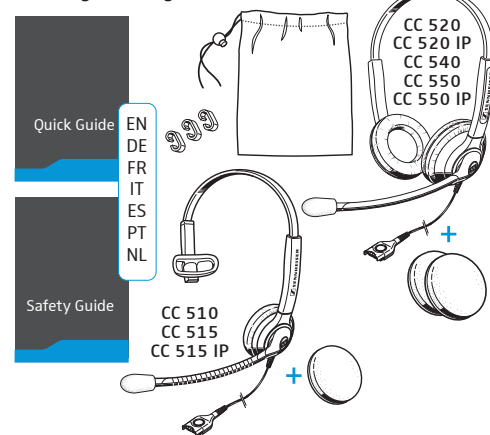
 SENNHEISER

Sennheiser Communications A/S

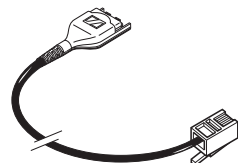
Industriparken 27, DK-2750 Ballerup, Denmark
www.sennheiser.com

Printed in China, Publ. 05/15, A01

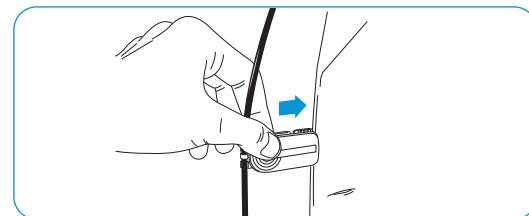
Delivery includes | Lieferumfang | Contenu | Volume di fornitura | Volumen de suministro | Itens fornecidos | Leveringsomvang



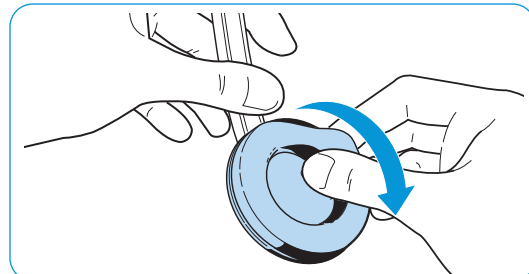
Accessories | Zubehör | Accessoires | Accessori | Accesorios | Acessórios | Toebehoren



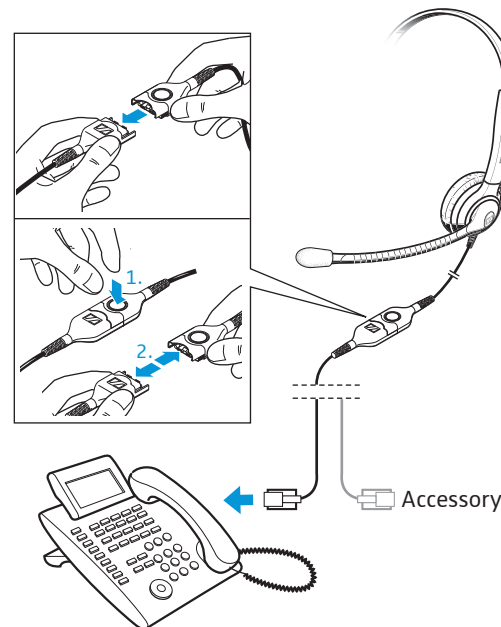
Using the cable clip | Kabel-Clip verwenden | Utiliser la pince pour câble | Utilizzo della clip per cavo | Utilizar el clip de cable | Utilizar o grampo para cabo | Kabelclip gebruiken



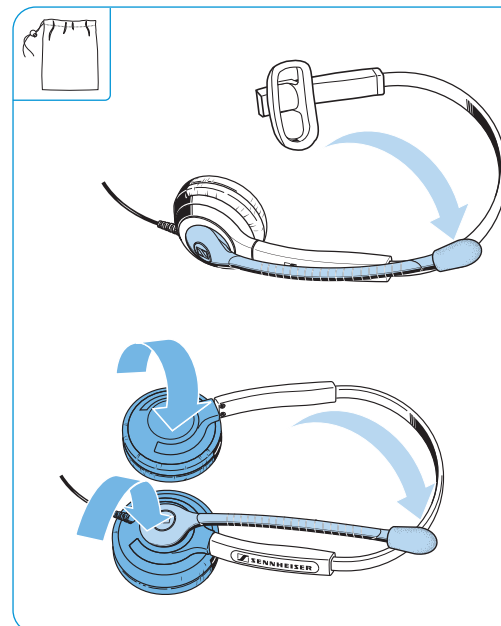
Replacing the ear pad | Ohrpolster austauschen | Remplacer le coussinet d'oreille | Sostituzione dei cuscinetti auricolari | Cambiar las almohadillas | Substituir as almofadas | Oorkussens vervangen



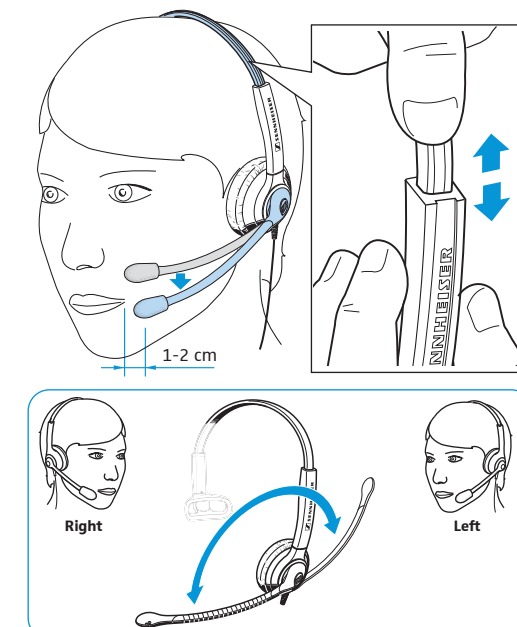
Connection possibilities | Anschlussmöglichkeiten | Possibilités de raccordement | Possibilità di collegamento | Posibilidades de conexión | Ligações possíveis | Aansluitmogelijkheden



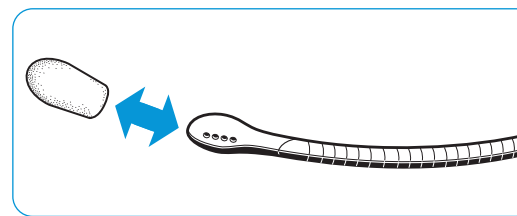
Transporting the headset | Headset transportieren | Transporter le casque-micro | Trasporto dell'headset | Transportar el headset | Transportar os micro-auscultadores | De headset transporteren



Wearing the headset | Headset aufsetzen | Mettre le casque-micro | Indossare l'headset | Ponerse los auriculares | Colocar o micro-auscultador | De headset opzetten



Using the popshield | Windschutz verwenden | Utiliser la bonnette anti-plosives | Utilizzo della protezione antivento | Uso de la protección contra el viento | Utilizar a protecção contra vento | Windkap gebruiken



Detailed information | Ausführliche Informationen | Informations détaillées | Informazioni dettagliate | Informaciones detalladas | Informações detalhadas | Uitvoering informatie



www.sennheiser.com/cco/support

CC 510 | CC 515 | CC 515 IP
 CC 520 | CC 520 IP | CC 540
 CC 550 | CC 550 IP

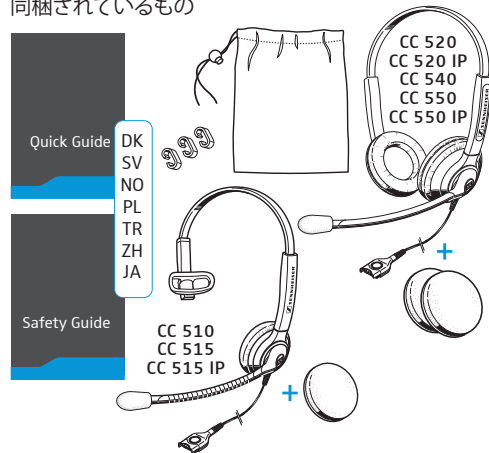


Quick Guide
 Snabbguide
 Quick Guide
 Krótka instrukcja
 obsługi

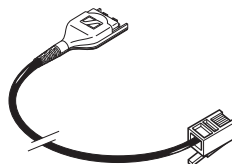
Hızlı Kılavuz
 快速指南
 クイックガイド



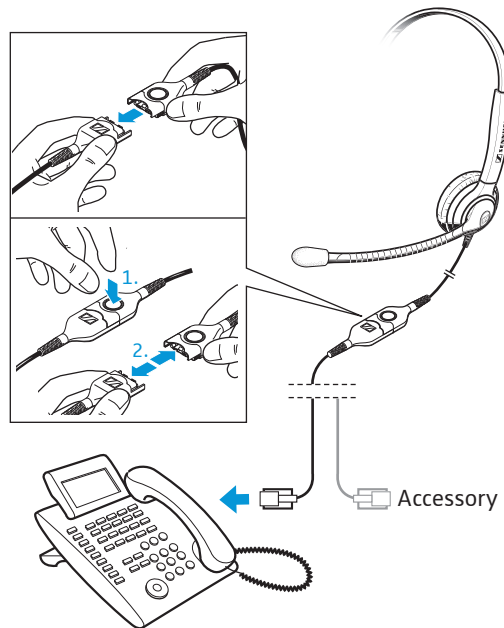
Leveringsomfang | Medföljande delar | Leveranseomfang
 Zakres dostawy | Teslimat Kapsamı | 供货范围
 同梱されているもの



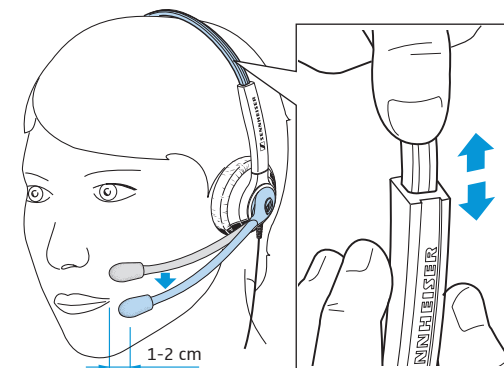
Tilbehør | Tillbehör | Tilbehør | Akcesoria | Aksesorii
 附件 | アクセサリー



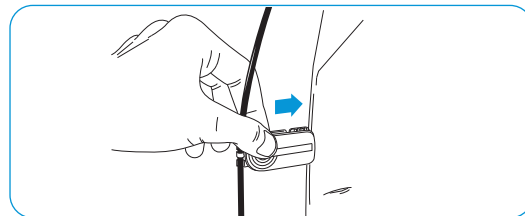
Tilslutningsmuligheder | Anslutning |
 Tillkoblingsmuligheter | Możliwości podłączenia |
 Bağlantı olanakları | 连接可能性 | 接続方法



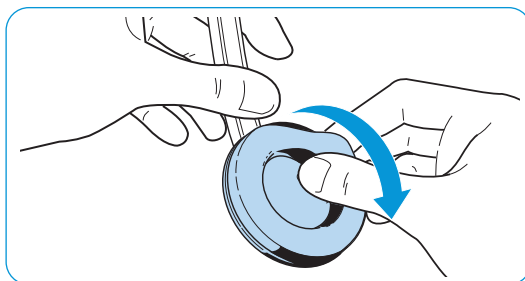
Brug af hovedsæt | Ta på headsetet | Sette på hodesettet
 Zakładanie zestawu słuchawkowego | Kulaklığın takılması
 戴上耳机 | ヘッドセットを装着する



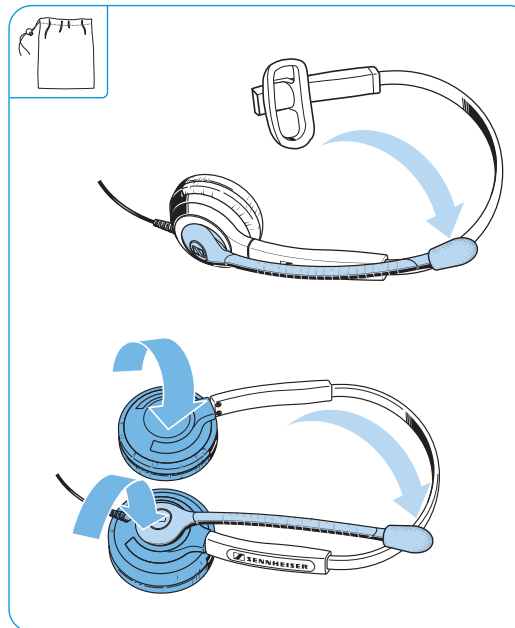
Brug af kabelclips | Använd kabelklämman |
 Bruk av kabelklips | Używanie zacisku kablowego |
 Kablo mandalı kullanılması | 使用耳机线夹 |
 ケーブルクリップを使用する



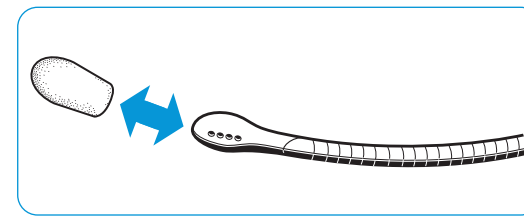
Udsiftning af ørepolstringer | Byt öronkuddar |
 Utskiftning av øreputer | Wymiana poduszek
 słuchawkowych | Kulak yastığının değiştirilmesi |
 更換耳墊 | イヤーパッドを交換する



Transport af headset | Transportera headset |
 Transportere hodesettet | Transport zestawu
 słuchawkowego | Kulaklık setini taşıma | 携帯耳机 |
 ヘッドセット輸送時



Anvendelse af vindbeskyttelse | Använd vindskydd |
 Bruk av vindbeskyttelse | Przechowywanie i transport |
 Rüzgar kalkanı takılması | 使用防风罩 | ポップシールドを
 使用する



Udførlige | Mer informasjon | Detaljert informasjon |
 Szczegółowe informacje | Ayrıntılı bilgiler | 详细信息 |
 詳細情報



www.sennheiser.com/cco/support

Sennheiser Communications A/S

Industriparken 27, DK-2750 Ballerup, Denmark
www.sennheiser.com

Printed in China, Publ. 05/15, A01