



e 835/e 835 S

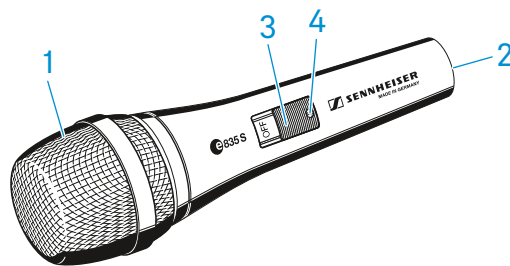
Instruction manual



Delivery includes

- e 835 / e 835 S
- MZQ 800 microphone clamp
- pouch
- quick guide
- safety guide

Product overview



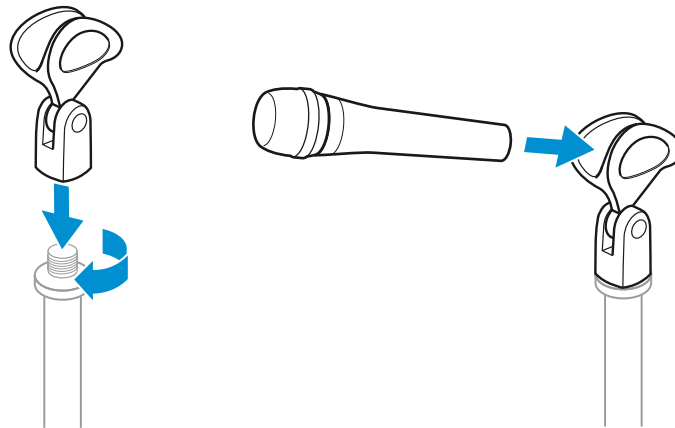
1. Sound inlet basket
2. XLR-3 connector
3. On/off switch (e 835 S only)
4. Screw (e 835 S only)



Installation

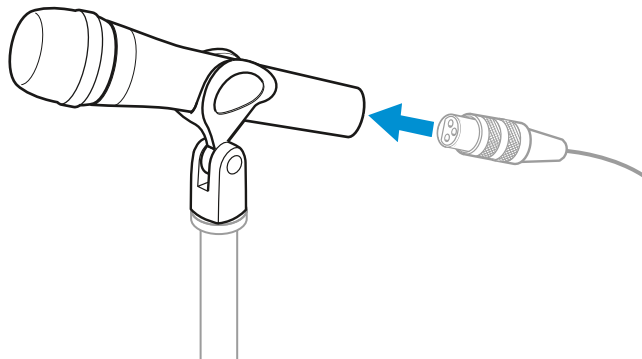
Attaching the microphone

- ▷ Screw the microphone clamp to a stand.
- ▷ Place the microphone with its back end into the microphone clamp.
- ▷ Orient the microphone together with the microphone clamp.



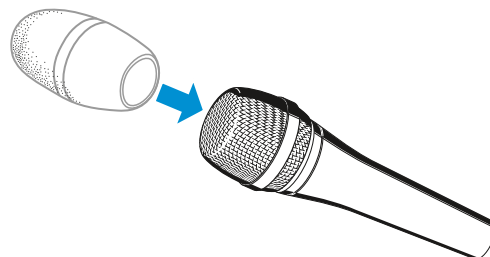
Connecting the microphone

- ▷ Connect the XLR-3 socket of the microphone cable (optional accessories) to the XLR-3 socket of the microphone.



Using the windshield

- ▷ Place the MZW 4032 (optional accessories) windshield over the microphone head.



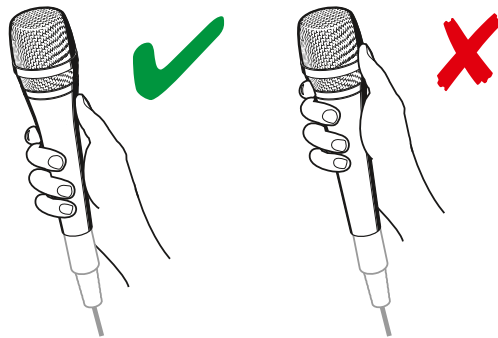


Operation

Holding the microphone

If you cover the microphone head during transmission, this will change the pick-up pattern of the microphone and consequently the sound.

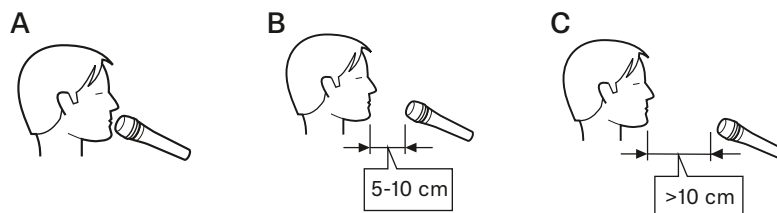
- ▷ Only hold the radio microphone by its body.



Positioning the microphone

- ▷ It is vital to observe the following notes:

Position	Resulting sound	Commentary
A	High proximity effect (large bass boost) Powerful, direct sound	Very little crosstalk from other sound sources
B	Less proximity effect (less bass boost) Some room ambience, natural, balanced sound	More crosstalk from other sound sources
C	Very little proximity effect (minimal bass boost) More room ambience, indirect sound	Higher crosstalk from other sound sources



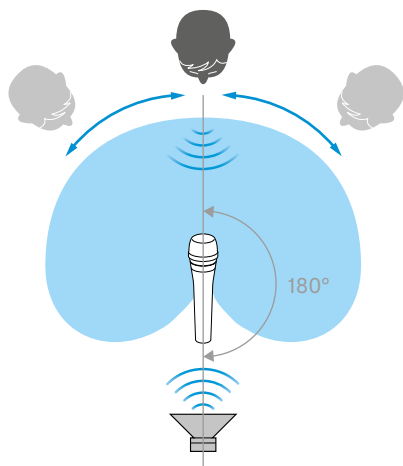
If sibilance occurs:

- ▷ Position the microphone slightly to the side and not directly in front of the mouth.



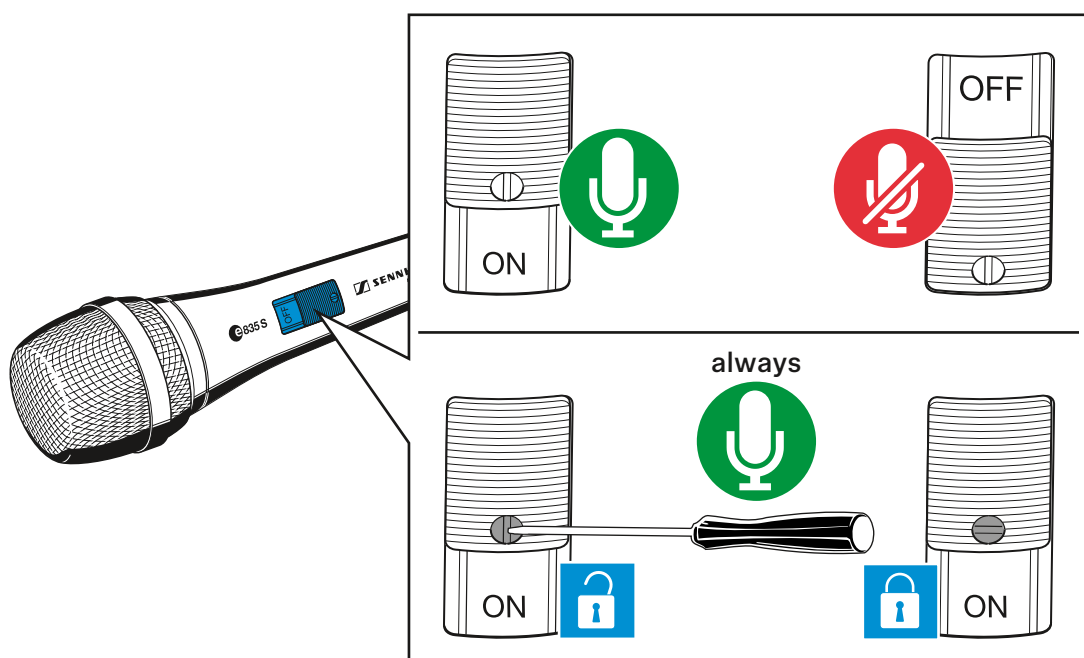
Positioning the monitor loudspeakers

- To prevent feedback and crosstalk, position your monitor loudspeakers in the angle area of the highest cancellation of the microphone (approx. 180°).



Switching the e 835 S on/off

- Use the on/off switch to switch the the e 835 S on or off.
- If necessary, use the screw to lock the on/off switch in the „on“ position.





Cleaning and maintaining the e 835 / e 835 S

CAUTION

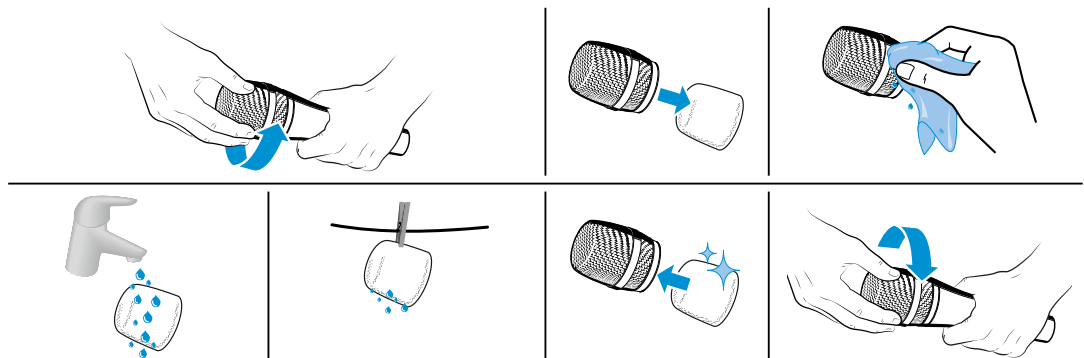
LIQUIDS CAN DAMAGE THE ELECTRONICS OF THE PRODUCT!

Liquids entering the housing of the product can cause a short-circuit and damage the electronics.

- ▷ Keep all liquids away from the product.
 - ▷ Do not use any solvents or cleansing agents.
-
- ▷ Disconnect the products from the power supply system and remove rechargeable batteries and batteries before you begin cleaning.
 - ▷ Clean all products only with a soft, dry cloth.

Cleaning the sound inlet basket of the microphone module

- ▷ Unscrew the sound inlet basket.
- ▷ Remove the foam insert from the sound inlet basket.
- ▷ Use a slightly damp cloth to clean the sound inlet basket from the inside and outside.
- ▷ If necessary, clean the foam insert with a mild detergent or replace the foam insert.
- ▷ Dry the foam insert.
- ▷ Reinsert the foam insert.
- ▷ Replace the sound inlet basket on the microphone head and screw it tight.

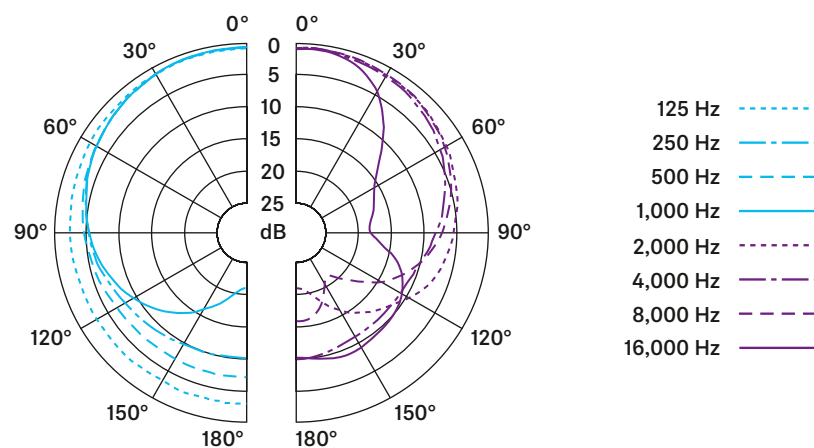




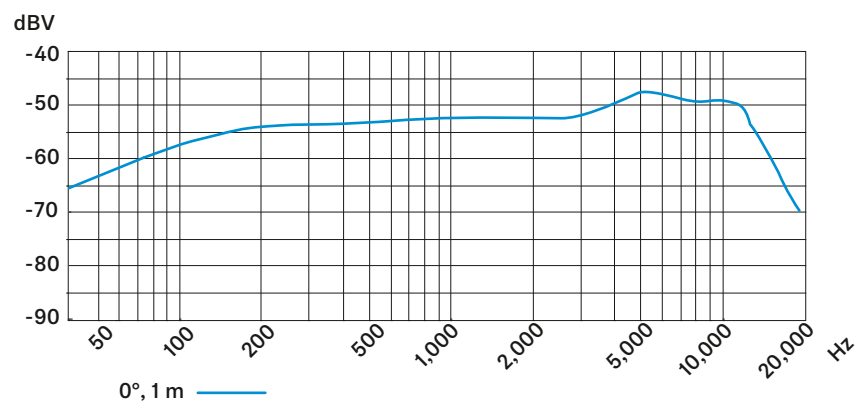
Specifications

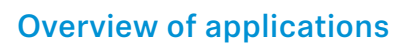
Transducer principle	dynamic
Frequency response	40 - 16,000 Hz
Pick-up pattern	cardioid
Sensitivity (free field, no load)	2.7 mV/Pa
Nominal impedance (at 1 kHz)	350 Ω
Min. terminating impedance	1 k Ω
Connector	XLR-3
Temperature range	0 °C to +40 °C
Dimensions	Ø 48 x 180 mm
Weight	330 g

Polar pattern



Frequency response





The diagram illustrates three microphone connection types, each enclosed in a dashed box:

- Balanced XLR to Balanced XLR:** Shows two XLR connectors. The first XLR (labeled 'XLR') has pins 1, 2, and 3. Pin 2 is connected to pin 2 of the second XLR (also labeled 'XLR'). Pin 3 is connected to pin 3 of the second XLR. Pin 1 of the first XLR is connected to pin 1 of the second XLR. A ground symbol is shown between the two XLRs.
- Unbalanced XLR to 6.3 mm:** Shows an XLR connector (labeled 'XLR') with pins 1, 2, and 3. Pin 2 is connected to the tip of a 6.3 mm jack. Pin 3 is connected to the sleeve of the 6.3 mm jack. Pin 1 of the XLR is connected to the tip of the 6.3 mm jack. A ground symbol is shown at the XLR connector.
- Balanced XLR to 6.3 mm:** Shows an XLR connector (labeled 'XLR') with pins 1, 2, and 3. Pin 2 is connected to the tip of a 6.3 mm jack. Pin 3 is connected to the sleeve of the 6.3 mm jack. Pin 1 of the XLR is connected to the tip of the 6.3 mm jack. A ground symbol is shown at the XLR connector.

[illegible]