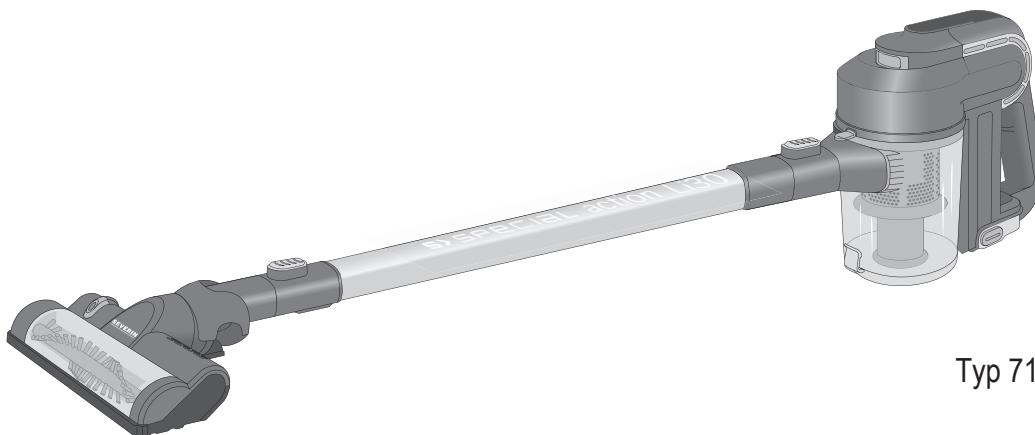


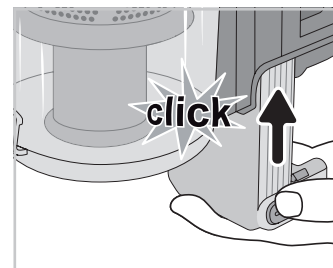
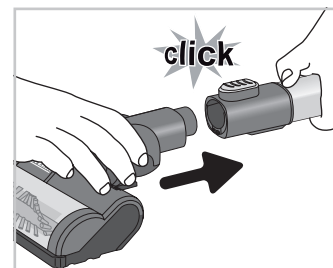
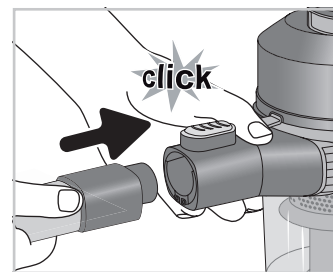
www.severin.com

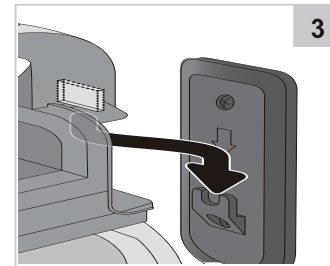
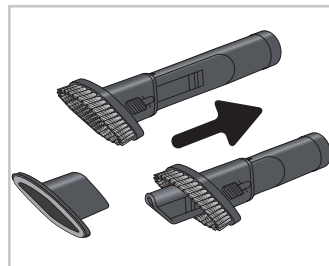
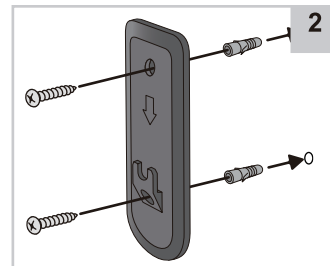
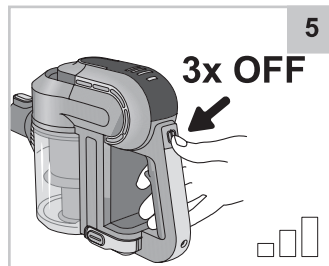
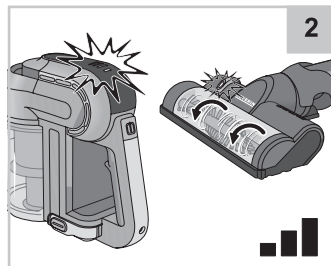
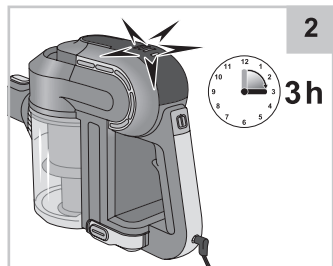
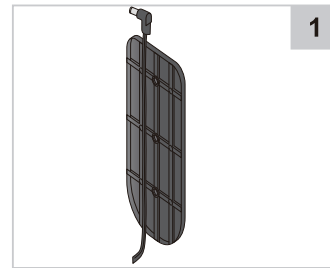
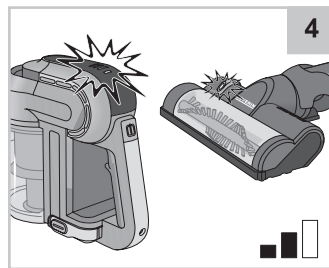
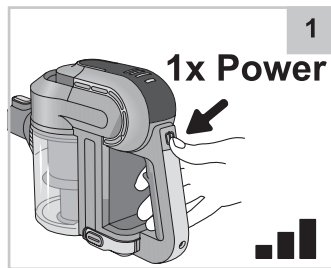
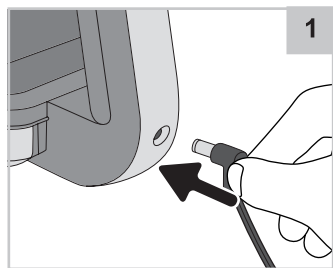
SEVERIN



Typ 7160

DE	2-in-1-Handsauger	Quick Start Guide
GB	2in1 Hand-held/Upright Vacuum Cleaner	Quick Start Guide
FR	Aspirateur 2 en 1 : balai et main	Prise en Main
NL	2in1-hand-/steelzuiger.....	Korte Handleiding
ES	Aspiradora de mango/manual 2en1	Guia de inicio rápido
IT	Aspiratore 2in1, manuale e con braccio	Guida di avvio rapido
SE	2-1-handdammsugare/sladdlös dammsugare.....	Snabbstartsguide
PL	Ręczny odkurzacz z rękojeścią 2 w 1	Krótką instrukcja obsługi





Staubbehälter leeren und reinigen/Bürste reinigen • Emptying and cleaning the dust container/Cleaning the brush • Vider et nettoyer le réservoir à poussière/Nettoyer la brosse • Stofreservoir legen en reinigen/Borstel reinigen • Vaciado y limpieza del depósito de polvo/Limpieza de los cepillos • Svutamento e pulizia del contenitore raccogli-polvere/Pulizia della spazzola • Tömning och rengöring av dammbehållaren/ Rengöring av borsten • Opróżnianie i czyszczenie zbiornika kurzu/Czyszczenie szczotki

