

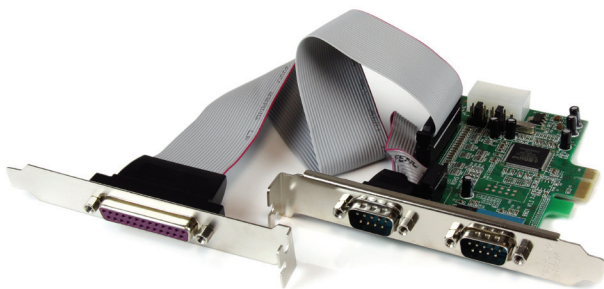
**StarTech.com**  
Hard-to-find made easy®

## Dual Profile PCI-Express RS232 Serial Adapter Card (2 Port Serial, 1 Port Parallel)

PEX1S553/ PEX1S553LP

PEX2S553/ PEX2S553LP

PEX2S5531P



\*actual product may vary from photos

DE: Bedienungsanleitung - [de.startech.com](http://de.startech.com)

FR: Guide de l'utilisateur - [fr.startech.com](http://fr.startech.com)

ES: Guía del usuario - [es.startech.com](http://es.startech.com)

IT: Guida per l'uso - [it.startech.com](http://it.startech.com)

NL: Gebruiksaanwijzing - [nl.startech.com](http://nl.startech.com)

PT: Guia do usuário - [pt.startech.com](http://pt.startech.com)

For the most up-to-date information, please visit: [www.startech.com](http://www.startech.com)

## FCC Compliance Statement

This equipment has been tested and found to comply with the limits for a Class B digital device, pursuant to part 15 of the FCC Rules. These limits are designed to provide reasonable protection against harmful interference in a residential installation. This equipment generates, uses and can radiate radio frequency energy and, if not installed and used in accordance with the instructions, may cause harmful interference to radio communications. However, there is no guarantee that interference will not occur in a particular installation. If this equipment does cause harmful interference to radio or television reception, which can be determined by turning the equipment off and on, the user is encouraged to try to correct the interference by one or more of the following measures:

Reorient or relocate the receiving antenna.

Increase the separation between the equipment and receiver.

Connect the equipment into an outlet on a circuit different from that to which the receiver is connected.

Consult the dealer or an experienced radio/TV technician for help.

## Use of Trademarks, Registered Trademarks, and other Protected Names and Symbols

This manual may make reference to trademarks, registered trademarks, and other protected names and/or symbols of third-party companies not related in any way to StarTech.com. Where they occur these references are for illustrative purposes only and do not represent an endorsement of a product or service by StarTech.com, or an endorsement of the product(s) to which this manual applies by the third-party company in question. Regardless of any direct acknowledgement elsewhere in the body of this document, StarTech.com hereby acknowledges that all trademarks, registered trademarks, service marks, and other protected names and/or symbols contained in this manual and related documents are the property of their respective holders.

# Table of Contents

Introduction .....	1
Features.....	1
Package Contents.....	1
Hardware Guide .....	2
Installation.....	2
Setting Power Mode .....	3
Hardware Installation.....	3
Software Installation .....	4
Verifying Installation .....	5
Specifications.....	6
Technical Support.....	7
Warranty Information.....	7

# Introduction

Thank you for your purchase of a StarTech.com Dual Profile PCI Express I/O card. This convenient I/O solution utilizes a native, single-chip design for maximum performance and reliability, and includes an optional low profile bracket that allows the card to be installed in virtually any size/form factor case.

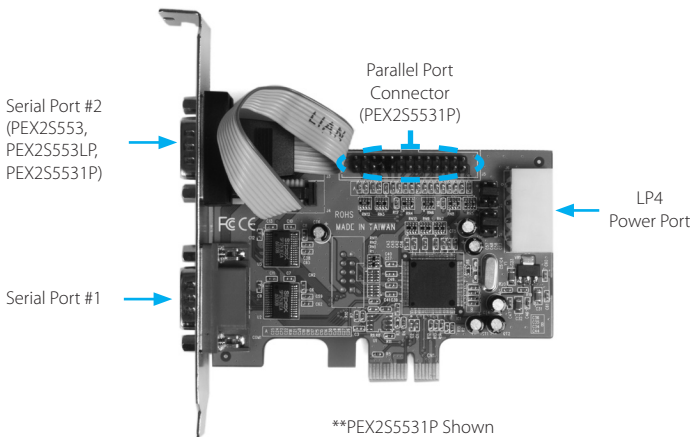
## Features

- Native PCI Express (single chip)
- Supports data transfer rates of up to: 2.7 Mbps (parallel) 460.8 Kbps (serial)
- Configurable in 5V, 12V, and RI (non-powered) modes
- Compliant with PCI Express base specifications revision 1.0a
- 128-byte deep FIFO per transmitter and receiver
- Automated in-band flow control using programmable Xon/Xoff in both directions
- Automated out-of-band flow control using CTS/RTS and DSR/DTR
- Standard and low profile brackets included

## Package Contents

- 1 x PCI-Express I/O Card (LP cards come with a low profile bracket preinstalled)
- 1 x Separate parallel port with ribbon cable (PEX2S5531P only)
- 1/2/3 x Low Profile Bracket (PEX1S553/PEX2S553/PEX2S5531P)
- 1 x Full Profile Bracket (PEX1S553LP and PEX2S553LP)
- 1 x Driver CD
- 1 x Instruction Manual

# Hardware Guide

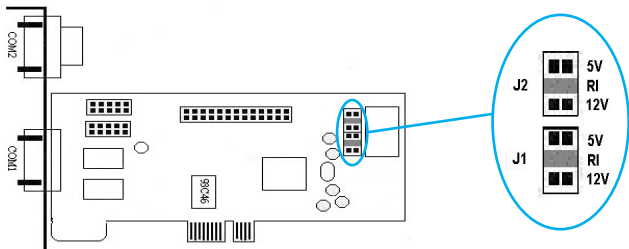


## Installation



**WARNING!** PCI Express cards, like all computer equipment, can be severely damaged by static electricity. Be sure that you are properly grounded before opening your computer case or touching your PCI Express card. StarTech.com recommends that you wear an anti-static strap when installing any computer component. If an anti-static strap is unavailable, discharge yourself of any static electricity build-up by touching a large grounded metal surface (such as the computer case) for several seconds. Also be careful to handle the PCI Express card by its edges and not the gold connectors.

## Setting Power Mode



This card is specially designed to allow for power output from the ninth pin of the DB9 connector(s) for devices that support power over serial. This card allows users to set each port with 5V, 12V, or RI (no power). Users can also choose to draw the necessary power from the system power supply by connecting to the LP4 power connector.

## Hardware Installation

1. Remove the cover of your system (see your computer's user manual for details, if necessary) and gently turn your computer onto its side, so that the PCI Express expansion slot openings on the motherboard are facing upwards.
2. Locate an empty PCI Express slot and remove the metal plate that covers the corresponding rear bracket. You may need a Phillips screw driver to perform this step. Retain any screws! You will need them to secure the card later. Refer to documentation of your computer system for further details.

**PEX2S5531P Only:** Please ensure that the metal plate that covers the rear bracket adjacent to the above mentioned bracket is vacant, so that it can be used for the parallel port installation).

3. Gently insert the card into the empty slot, making sure it is firmly seated, then secure the card in place using the screw you removed in Step 3, if applicable.
4. **PEX2S5531P:** Connect the ribbon cable provided by the (separate) parallel port to the provided slot on the PEX2S5531P board (please see diagram on previous page), then secure the parallel port to the slot adjacent to the one used to secure the main PEX2S5531P board.
5. **OPTIONAL:** If supplying power from the computer system power supply, (see "Setting Power Mode") connect the LP4 molex plug into the card.
6. Once the card (and additional port, if necessary) are secured to the motherboard (and within the case), replace the computer cover and power on the computer, then proceed to the next section, titled **Software Installation**.

## Software Installation

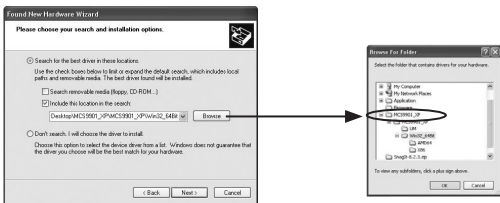
When the computer is booted up following the physical installation of the PCI Express card, the operating system will detect the presence of the card within the computer system and prompt for software installation:

1. The Found New Hardware Wizard will appear. When asked if you want Windows to search for software, select **No, not this time**, then click **Next** to continue:
2. On the screen that follows, select **Install from a list or specific location**, then click on **Next**.



3. On the screen that follows, select **Search for the best driver in these locations**. Ensure there is a checkmark next to **Include this location in the search**, then click **Browse** to locate the correct file. (Please note: The correct file can be located on the accompanying CD in the **MCS9922** folder).

Once you've specified the correct file, please click Next to continue.

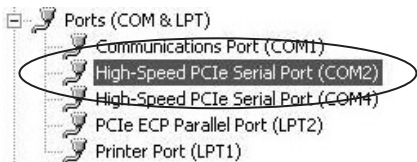


4. A Windows security warning will appear, notifying you that the software you are installing has not passed Windows Logo testing. Please click on **Continue Anyway**:
5. Once the driver files have been installed, you will be notified that the Wizard has finished installing the software for "High Speed PCIe Serial Port". Please click on **Finish**.
6. **PEX2S553**: Repeat steps 1-5 once more for the remaining serial port to be installed.  
**PEX2S553LP**: Repeat steps 1-5 twice more, once for each of the remaining ports (one serial, one parallel).

## Verifying Installation

To verify that the installation was successful in Windows 2000/XP/Vista:

1. Right-click on **My Computer** and select **Manage** to open the Computer Management window.
2. In the left pane, select **Device Manager**.
3. In the right pane, click on **Ports (COM & LPT)**. You should see the newly added port(s) listed here:



# Specifications

	<b>PEX1S553 PEX1S553LP</b>	<b>PEX2S553 PEX2S553LP</b>	<b>PEX2S5531P</b>
<b>Bus Type</b>	PCI Express x1		
<b>Chipset ID</b>	Moschip MCS9922CV-AA		Moschip MCS9901CV-CC
<b>Maximum Data Transfer Rate</b>	Serial: 460.8 Kbps	Serial: 460.8 Kbps	Parallel: 2.7 Mbps Serial: 460.8 Kbps
<b>OS Support</b>	Windows <sup>®</sup> 2000/XP/2003/Vista/7 Linux <sup>®</sup> Kernel 2.6.11 and above MAC OS <sup>®</sup> 10.4		
<b>External Connectors</b>	1 x DB9 male	2 x DB9 male	2 x DB9 male 1 x DB25 female
<b>Product Dimensions (LxWxH)</b>	105mm (4.13") x 120mm (4.72") x 20mm (0.79")		
<b>Product Weight</b>	51.5 g (1.82 oz)	63.5 g (2.24 oz)	140 g (4.94oz)
<b>Regulatory Certifications</b>	CE, FCC, RoHS		

# Technical Support

StarTech.com's lifetime technical support is an integral part of our commitment to provide industry-leading solutions. If you ever need help with your product, visit [www.startech.com/support](http://www.startech.com/support) and access our comprehensive selection of online tools, documentation, and downloads.

## Warranty Information

This product is backed by a two year warranty.

In addition, StarTech.com warrants its products against defects in materials and workmanship for the periods noted, following the initial date of purchase. During this period, the products may be returned for repair, or replacement with equivalent products at our discretion. The warranty covers parts and labor costs only. StarTech.com does not warrant its products from defects or damages arising from misuse, abuse, alteration, or normal wear and tear.

### Limitation of Liability

In no event shall the liability of StarTech.com Ltd. and StarTech.com USA LLP (or their officers, directors, employees or agents) for any damages (whether direct or indirect, special, punitive, incidental, consequential, or otherwise), loss of profits, loss of business, or any pecuniary loss, arising out of or related to the use of the product exceed the actual price paid for the product. Some states do not allow the exclusion or limitation of incidental or consequential damages. If such laws apply, the limitations or exclusions contained in this statement may not apply to you.

# StarTech.com

Hard-to-find **made easy**®

Hard-to-find made easy. At StarTech.com, that isn't a slogan. It's a promise.

StarTech.com is your one-stop source for every connectivity part you need. From the latest technology to legacy products — and all the parts that bridge the old and new — we can help you find the parts that connect your solutions.

We make it easy to locate the parts, and we quickly deliver them wherever they need to go. Just talk to one of our tech advisors or visit our website. You'll be connected to the products you need in no time.

Visit **[www.startech.com](http://www.startech.com)** for complete information on all StarTech.com products and to access exclusive resources and time-saving tools.

*StarTech.com is an ISO 9001 Registered manufacturer of connectivity and technology parts. StarTech.com was founded in 1985 and has operations in the United States, Canada, the United Kingdom and Taiwan servicing a worldwide market.*