



Questo manuale d'istruzione è fornito da trovaprezzi.it. Scopri tutte le offerte per StarTech.com PEXHDCAP2 o cerca il tuo prodotto tra le [migliori offerte di Altre Schede](#)

StarTech.com
Hard-to-find made easy®

PCIe video capture card - HDMI®, DVI, VGA and Component - 1080p

PEXHDCAP2



*actual product may vary from photos

DE: Bedienungsanleitung - de.startech.com

FR: Guide de l'utilisateur - fr.startech.com

ES: Guía del usuario - es.startech.com

IT: Guida per l'uso - it.startech.com

NL: Gebruiksaanwijzing - nl.startech.com

PT: Guia do usuário - pt.startech.com

For the latest information, technical specifications, and support for this product, please visit www.startech.com/PEXHDCAP2.

FCC Compliance Statement

This equipment has been tested and found to comply with the limits for a Class B digital device, pursuant to part 15 of the FCC Rules. These limits are designed to provide reasonable protection against harmful interference in a residential installation. This equipment generates, uses and can radiate radio frequency energy and, if not installed and used in accordance with the instructions, may cause harmful interference to radio communications. However, there is no guarantee that interference will not occur in a particular installation. If this equipment does cause harmful interference to radio or television reception, which can be determined by turning the equipment off and on, the user is encouraged to try to correct the interference by one or more of the following measures:

- Reorient or relocate the receiving antenna.
- Increase the separation between the equipment and receiver.
- Connect the equipment into an outlet on a circuit different from that to which the receiver is connected.
- Consult the dealer or an experienced radio/TV technician for help

This device complies with part 15 of the FCC Rules. Operation is subject to the following two conditions: (1) This device may not cause harmful interference, and (2) this device must accept any interference received, including interference that may cause undesired operation.

Changes or modifications not expressly approved by StarTech.com could void the user's authority to operate the equipment.

Industry Canada Statement

This Class B digital apparatus complies with Canadian ICES-003.

Cet appareil numérique de la classe [B] est conforme à la norme NMB-003 du Canada.

CAN ICES-3 (B)/NMB-3(B)

Use of Trademarks, Registered Trademarks, and other Protected Names and Symbols

This manual may make reference to trademarks, registered trademarks, and other protected names and/or symbols of third-party companies not related in any way to StarTech.com. Where they occur these references are for illustrative purposes only and do not represent an endorsement of a product or service by StarTech.com, or an endorsement of the product(s) to which this manual applies by the third-party company in question. Regardless of any direct acknowledgement elsewhere in the body of this document, StarTech.com hereby acknowledges that all trademarks, registered trademarks, service marks, and other protected names and/or symbols contained in this manual and related documents are the property of their respective holders.

Table of Contents

Introduction	1
Packaging contents	1
System requirements	1
Product overview	1
Hardware installation	2
Software and driver installation	2
Basic operation	3
Connecting your video source	3
Stream Catcher operation	3
Technical support	5
Warranty information	5

Introduction

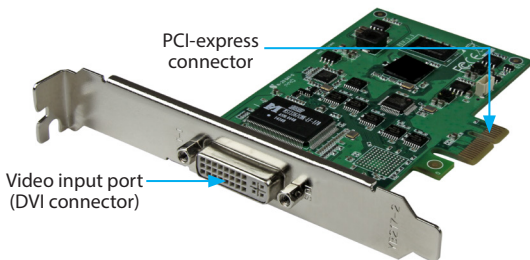
Packaging contents

- 1 x PCIe video capture card
- 1 x DVI-D to HDMI adapter
- 1 x DVI-I to VGA adapter
- 1 x DVI-I breakout cable
- 1 x quick install guide

System requirements

- Computer system with
 - Available PCI-express slot
 - Intel Core 2 Duo® or higher
 - 1 GB of memory or higher
 - DirectX 9.0c compatible graphics adapter
 - Windows® 8 / 8.1 (32/64bit), 7 (32/64bit), Vista(32/64) or XP(32/64)
 - Operating systems are subject to change. For the latest requirements, please visit: www.startech.com/PEXHDCAP2.
- HDMI, VGA, DVI, component or composite video source device with cabling

Product overview



Hardware installation

WARNING! PCI Express cards, like all computer equipment, can be severely damaged by static electricity. Be sure that you are properly grounded before opening your computer case or touching your PCI Express card. StarTech.com recommends that you wear an anti-static strap when installing any computer component. If an anti-static strap is unavailable, discharge yourself of any static electricity by touching a large grounded metal surface (such as your computer case) for several seconds. Also, please ensure you handle the card by its edges and not the PCI-express connector.

1. Turn your computer off and any peripherals connected to the computer (i.e. Printers, external hard drives, etc.). Unplug the power cable from the rear of the power supply on the back of the computer and disconnect all peripheral devices.
2. Remove the cover from the computer case. See documentation for your computer system for details.
3. Locate an open PCI Express slot and remove the metal cover plate on the rear of the computer case (refer to documentation for your computer system for details).
Note: This card will work in PCI –express slots of additional lanes (i.e. x4, x8 or x16 slots).
4. Gently insert the card into the open PCI Express slot and fasten the bracket to the rear of the case (refer to documentation for your computer system for details).
5. Place the cover back onto the computer case.
6. Insert the power cable into the socket on the power supply and reconnect all other connectors that were removed in Step 1.

Software and driver installation

1. Turn on your computer. Once your computer has fully booted the “Found New Hardware” wizard will likely appear. Please close the found new hardware wizard.
2. Download the latest version of the software and drivers from www.StarTech.com/PEXHDCAP2.
Note: please ensure you have extracted the zip file before continuing with the installation steps.
3. Locate and run the “Setup” application file from the main directory.
4. The “Installation Wizard” will launch, and guide you through the installation process. Please follow the on screen prompts to proceed through the “Installation Wizard”.
5. Once the “Installation Wizard” has completed, an icon for “StreamCatcher” will appear on your desktop.
6. Please restart your computer to complete installation.

Basic operation

Connecting your video source

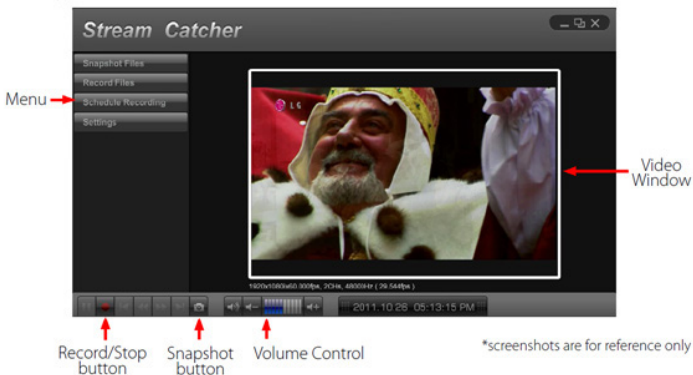
Using the required video cabling (not included), connect the output on your video source device to the input port on the capture device.

Note: If you are using a video source other than DVI (such as: HDMI, VGA, composite or component), please use the appropriate adapter (included) along with you're A/V cabling (not included).

Stream Catcher operation

Double-click the "StreamCatcher" icon on the desktop to launch the video capture application. This will bring up the main menu screen that contains the video preview window and recording controls. Additional options and configurations can be accessed through the Main Menu.

Initial setup note: If there is no content displayed in the video window and your source device is connected access the "Settings" section, and ensure the "device" is configured for your specific video input type. If using an HDCP protected video source (i.e. retail Blu-Ray movie), this will also result in no video preview or capture.



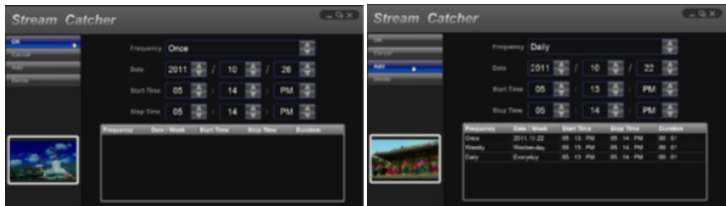
Manually record a video

Manually recording video can be done by simply pressing the “Record” button from the control menu along the bottom of the Stream Catcher window. The frame around the video window will turn red, while recording.

When you wish to stop recording, press the “Stop” button.

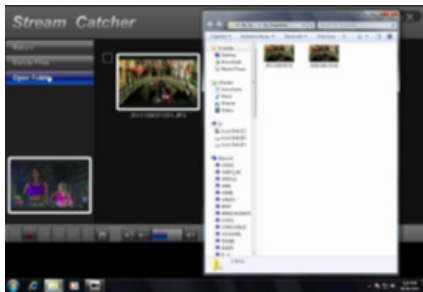
Schedule a video recording

The software can be setup to start recording at a specific time and date and occur once or multiple times. Setup the schedule and click the “Add” button to save it. Multiple schedules can be maintained at the same time. To remove a schedule, simply select it from the list, and click the “Delete” button.



Take a snapshot of your video source

Click the “Snapshot” button to take a screen capture of the video stream.



Clicking this button will open the folder location where all of the snapshot files are saved in Windows, enabling you to name and choose the location of your image.

For complete operation instructions, please download the full product manual at: www.StarTech.com/PEXHDCAP2.

Technical support

StarTech.com's lifetime technical support is an integral part of our commitment to provide industry-leading solutions. If you ever need help with your product, visit www.startech.com/support and access our comprehensive selection of online tools, documentation, and downloads.

For the latest drivers/software, please visit www.startech.com/downloads

Warranty information

This product is backed by a two-year warranty.

StarTech.com warrants its products against defects in materials and workmanship for the periods noted, following the initial date of purchase. During this period, the products may be returned for repair, or replacement with equivalent products at our discretion. The warranty covers parts and labor costs only. StarTech.com does not warrant its products from defects or damages arising from misuse, abuse, alteration, or normal wear and tear.

Limitation of Liability

In no event shall the liability of StarTech.com Ltd. and StarTech.com USA LLP (or their officers, directors, employees or agents) for any damages (whether direct or indirect, special, punitive, incidental, consequential, or otherwise), loss of profits, loss of business, or any pecuniary loss, arising out of or related to the use of the product exceed the actual price paid for the product. Some states do not allow the exclusion or limitation of incidental or consequential damages. If such laws apply, the limitations or exclusions contained in this statement may not apply to you.

Hard-to-find made easy. At StarTech.com, that isn't a slogan. It's a promise.

StarTech.com is your one-stop source for every connectivity part you need. From the latest technology to legacy products — and all the parts that bridge the old and new — we can help you find the parts that connect your solutions.

We make it easy to locate the parts, and we quickly deliver them wherever they need to go. Just talk to one of our tech advisors or visit our website. You'll be connected to the products you need in no time.

Visit www.startech.com for complete information on all StarTech.com products and to access exclusive resources and time-saving tools.

StarTech.com is an ISO 9001 Registered manufacturer of connectivity and technology parts. StarTech.com was founded in 1985 and has operations in the United States, Canada, the United Kingdom and Taiwan servicing a worldwide market.