



Questo manuale d'istruzione è fornito da trovaprezzi.it. Scopri tutte le offerte per [StarTech.com SV211HDUA](http://StarTech.com/SV211HDUA) o cerca il tuo prodotto tra le [migliori offerte di Switch](#)

StarTech.com
Hard-to-find made easy®

2 Port USB HDMI®/DisplayPort® Cable KVM Switch with Audio and Remote Switch – USB Powered

SV211HDUA / SV211DPUA



*actual product may vary from photos

DE: Bedienungsanleitung - de.startech.com

FR: Guide de l'utilisateur - fr.startech.com

ES: Guía del usuario - es.startech.com

IT: Guida per l'uso - it.startech.com

NL: Gebruiksaanwijzing - nl.startech.com

PT: Guia do usuário - pt.startech.com

For the most up-to-date information, please visit: www.startech.com

FCC Compliance Statement

This equipment has been tested and found to comply with the limits for a Class B digital device, pursuant to part 15 of the FCC Rules. These limits are designed to provide reasonable protection against harmful interference in a residential installation. This equipment generates, uses and can radiate radio frequency energy and, if not installed and used in accordance with the instructions, may cause harmful interference to radio communications. However, there is no guarantee that interference will not occur in a particular installation. If this equipment does cause harmful interference to radio or television reception, which can be determined by turning the equipment off and on, the user is encouraged to try to correct the interference by one or more of the following measures:

- Reorient or relocate the receiving antenna.
- Increase the separation between the equipment and receiver.
- Connect the equipment into an outlet on a circuit different from that to which the receiver is connected.
- Consult the dealer or an experienced radio/TV technician for help.

Use of Trademarks, Registered Trademarks, and other Protected Names and Symbols

This manual may make reference to trademarks, registered trademarks, and other protected names and/or symbols of third-party companies not related in any way to StarTech.com. Where they occur these references are for illustrative purposes only and do not represent an endorsement of a product or service by StarTech.com, or an endorsement of the product(s) to which this manual applies by the third-party company in question. Regardless of any direct acknowledgement elsewhere in the body of this document, StarTech.com hereby acknowledges that all trademarks, registered trademarks, service marks, and other protected names and/or symbols contained in this manual and related documents are the property of their respective holders.

Table of Contents

Introduction	2
Packaging Contents	2
System Requirements.....	2
Installation	2
Operation	5
Hotkey Quick Reference Guide	6
Specifications	8
Technical Support	9
Warranty Information	9

Introduction

Packaging Contents

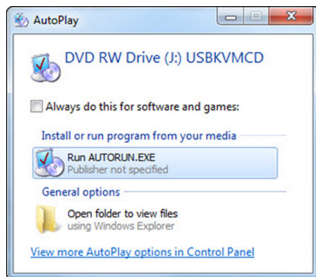
- 1 x KVM Switch
- 1 x Software CD
- 1 x Instruction Manual

System Requirements

- Available video output - HDMI (SV211HDUA) or DisplayPort (SV211DPUA), USB and 3.5mm Audio/Microphone connections (if HDMI/DisplayPort audio is not being used)
- Monitor, speaker/microphone and USB keyboard/mouse peripheral set

Installation

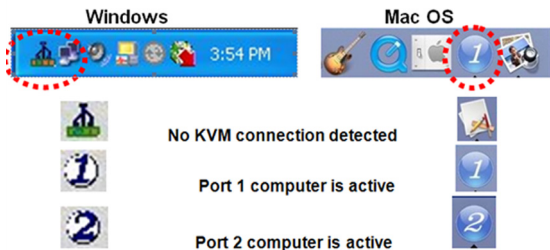
1. Before connecting the KVM Switch, insert the included installation CD into each computer's CD/DVD drive.
2. If AutoPlay runs, choose the option to browse/open the folder. Otherwise you can access the files on the CD by going into My Computer, double-click the CD/DVD drive and run Autorun.exe.



3. Click the appropriate software installation option for your system, and available ports ("2-Port KVM" - Mac or Windows), and you will be prompted to click Next several times to complete the installation.

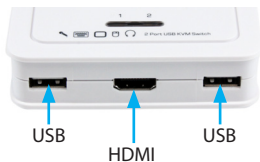


4. Once the installation is complete, a new system tray icon will display (Windows), or a new Application (Mac OS) with the following indicators.

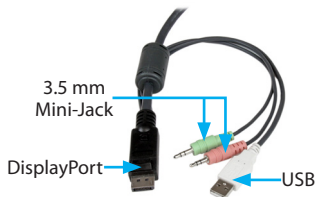
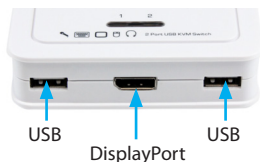


5. Connect your HDMI / DisplayPort Monitor, keyboard, mouse and speakers to the available ports on the KVM Switch.

SV211HDUA



SV211DPUA



6. Connect the attached KVM and audio cables to Computer 1.

7. Perform the same connections to Computer 2.

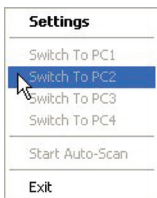


Operation

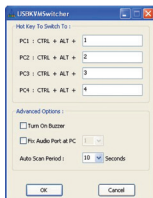
There are three methods to control your KVM Switch for computer and Audio/Mic port selection:

1. **QuickSwitch Button** - A wired remote control for direct switching control. Simply press the button to toggle between the two computers.
2. **KVM Switching Software** (Windows & Mac platform) – See “Quick Reference Sheet” below for details.

Windows

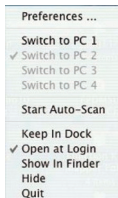


Operation Menu

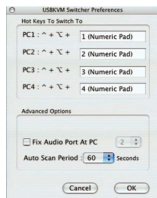


Settings Page

Mac



Operation Menu



Preferences Page

3. **Keyboard hotkeys** – For Windows, the computer toggle key combination is “Scroll Lock + Scroll Lock”. For Mac, please refer to Define Hotkey Preceding Sequence in the Quick Reference Sheet.

Note: Each keystroke hotkey sequence should be pressed within two seconds, otherwise, the hotkey sequence may not be validated.

Hotkey Quick Reference Guide

Command	Switcher Software	Description
Select PC Port	Right-click the KVM Switching icon to evoke the operation menu, then select whichever computer that is available for switching.	Select the active PC port
Previous PC port	Right-click the KVM Switching icon to evoke the operation menu, then select whichever computer that is available for switching.	Select the previous connected PC port
Next PC port	Right-click the KVM Switching icon to evoke the operation menu, then select whichever computer that is available for switching.	Select the next connected PC port
Define Hotkey Preceding Sequence	Right-click the KVM Switching icon to evoke the operation menu, then select Settings (Windows) / Configuration Dialog Box (Mac OS).	User-definable hotkeys sequence for computer selection is "Ctrl +Alt+ [command key]". For Mac, instead of Scroll Lock key, you may use User-definable hotkey sequence to switch.
Autoscan	Right-click the KVM Switching icon to evoke the operation menu, then select Start Auto-Scan to activate autoscanning.	Autoscan through every connected port for quick screen browsing of each port (default scan delay time = 10 second)
Autoscan with Programmable Delay Time	Right-click the KVM Switching icon to evoke the operation menu, then select a range of Auto-Scan Period.	Autoscan with a user-defined delay time within a range of 10 ~ 60 seconds
Stop Autoscan	While autoscanning, right-click the KVM Switching icon to evoke the operation menu, and then select Stop Auto-Scan to de-activate autoscanning.	Terminate Autoscan activity

Beeper	Right-click the KVM Switching icon to evoke the operation menu, then check the box "Turn on Buzzer".	Beeper will be functional between operations of KVM switch
Keep in Dock (Mac only)	Right-click the KVM Switching icon to evoke the operation menu, and then select "Keep in Dock".	KVM switching icon will be on the system tray of your desktop
Open at Login (Mac only)	Right-click the KVM Switching icon to evoke the operation menu, then select "Open at login".	Operate Switcher Software and login
Fix Audio Port	Right-click the KVM Switching icon to evoke the operation menu, then check the box "Fix Audio Port at PC" and select the desired PC port.	Check this option and then select the computer to fix the audio/mic port to the selected computer. Once this option is checked, the audio/mic port will be fixed and become non-switchable.

Specifications

	SV211DPUA	SV211HDUA
Console Connectors	1 x DisplayPort (20 pin) Female 2 x USB A (4 pin) Female 2 x 3.5mm Mini-Jack (3 Position) Female	1 x HDMI (19 pin) Female 2 x USB A (4 pin) Female 2 x 3.5mm Mini-Jack (3 Position) Female
Computer Connectors (per port)	1 x DisplayPort (20 pin) Male 1 x USB 2.0 A (4 pin) Male 2 x 3.5mm Mini-Jack (3 Position) Male	1 x HDMI (19 pin) Male 1 x USB 2.0 A (4 pin) Male 2 x 3.5mm Mini-Jack (3 Position) Male
LEDs	2 x PC Selection Indicator	
Switching Modes	Pushbutton, Hot-key, Software	
Maximum Resolution	2560 x 1600	1080p (1920x1200)
Audio Support	3.5mm and HDMI audio	3.5mm and DisplayPort audio
On Screen Display	No	
Cascadable	No	
Rack-Mountable	No	
Enclosure Type	Plastic	
Operating Temperature	0°C to 40°C (32°F to 104°F)	
Storage Temperature	-20°C to 60°C (4°F to 140°F)	
Humidity	0~90% RH Non-Condensing	
Cable Length	0.85 m (Attached KVM Cable) / 1.4 m (Remote Switch)	
Dimensions (LxWxH)	88 x 60 x 25mm	
Weight	400g	

Technical Support

StarTech.com's lifetime technical support is an integral part of our commitment to provide industry-leading solutions. If you ever need help with your product, visit www.startech.com/support and access our comprehensive selection of online tools, documentation, and downloads.

For the latest drivers/software, please visit www.startech.com/downloads

Warranty Information

This product is backed by a two year warranty.

In addition, StarTech.com warrants its products against defects in materials and workmanship for the periods noted, following the initial date of purchase. During this period, the products may be returned for repair, or replacement with equivalent products at our discretion. The warranty covers parts and labor costs only. StarTech.com does not warrant its products from defects or damages arising from misuse, abuse, alteration, or normal wear and tear.

Limitation of Liability

In no event shall the liability of StarTech.com Ltd. and StarTech.com USA LLP (or their officers, directors, employees or agents) for any damages (whether direct or indirect, special, punitive, incidental, consequential, or otherwise), loss of profits, loss of business, or any pecuniary loss, arising out of or related to the use of the product exceed the actual price paid for the product. Some states do not allow the exclusion or limitation of incidental or consequential damages. If such laws apply, the limitations or exclusions contained in this statement may not apply to you.

Hard-to-find made easy. At StarTech.com, that isn't a slogan. It's a promise.

StarTech.com is your one-stop source for every connectivity part you need. From the latest technology to legacy products — and all the parts that bridge the old and new — we can help you find the parts that connect your solutions.

We make it easy to locate the parts, and we quickly deliver them wherever they need to go. Just talk to one of our tech advisors or visit our website. You'll be connected to the products you need in no time.

Visit www.startech.com for complete information on all StarTech.com products and to access exclusive resources and time-saving tools.

StarTech.com is an ISO 9001 Registered manufacturer of connectivity and technology parts. StarTech.com was founded in 1985 and has operations in the United States, Canada, the United Kingdom and Taiwan servicing a worldwide market.