

TCL

3.1 Channel Soundbar with Dolby Audio™, DTS® Virtual:X™
and Wireless Subwoofer

P733W

User Manual



Contents

1 Before you begin3

2 Welcome.....6

What's in the box	6
Overview of the Soundbar	8
Overview of the wireless Subwoofer.....	10
Set up your Soundbar system	11
Position your Soundbar and Subwoofer.....	11
Mount your Soundbar on the wall.....	12
Install/replace the Remote Control batteries	15
Overview of the Remote Control.....	16

3 Connect your Soundbar system19

Connect with the HDMI cable.....	19
Connect with the Optical cable.....	21
Direction for setting up your Soundbar using an Optical cable	22
Connect your Soundbar to Power Supply	23
Connect the Soundbar with your Bluetooth device.....	24
Connect your wireless Subwoofer to the Soundbar	26

4 Use your Soundbar system27

Use your Soundbar with the top panel or Remote Control.....27

Listen to music from your Bluetooth device 29

Use the USB cable or device for music playback 30

5 Specifications31

6 Notice31

Disposal of your old product and battery..... 32

Trademarks..... 33

7 FAQ34

1 Before you begin

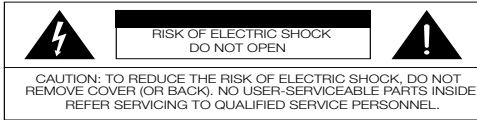
- Carefully read and observe all safety instructions in the safety leaflet.
- This Soundbar is intended for indoor use only. In case it accidentally gets in contact with small amounts of water, unplug immediately and use a dry cloth to remove the water.
- Unplug the Soundbar if it is not used for long periods of time or during lightning storms.
- Make sure the Soundbar is installed on a solid surface or solidly wall-mounted below your TV for the best experience.
- Only use AAA 1,5V non-rechargeable batteries for the Remote Control.
- In case any of the cables are visibly damaged or pinched, unplug the Soundbar and replace the cable.
- Be careful not to sharply bend the HDMI and optical cable as they may affect the performance.
- Protect your hearing by adjusting to a proper volume. Predefined and customizable sound settings are available for your listening comfort.

Important safety instructions

Make sure you read all the safety information before you use this product.

TCL North America bears no responsibility for accidents or damages caused by unauthorized changes, modifications or improper use of the product.

User Manual can be found at www.tcl.com/us on the specific product page in the "Download" section.



The lightning flash with arrowhead symbol, within an equilateral triangle is intended to alert the user to the presence of uninsulated dangerous voltage within the product's enclosure that may be of sufficient magnitude to constitute a risk of electric shock.



The exclamation point within an equilateral triangle is intended to alert the user to the presence of important operating and maintenance (servicing) instructions in the literature accompanying the product.



This symbol indicates that this product incorporates double insulation between hazardous main voltage and user accessible parts. When servicing, use only identical replacement parts.

Warnings

- To reduce the risk of fire or electric shock, do not expose this product to rain or moisture. This product should not be exposed to dripping or splashing. No objects filled with liquids, such as vases, should be placed on or near the product.
- The product is unstable if it is not properly placed or mounted to the wall. Be sure to follow the wall mounting instructions provided in the user manual to ensure your safety.
- Do not expose batteries to excessive heat such as sunshine, fire, and so forth.
- To avoid the danger of suffocation, keep plastic packaging away from pets, babies, and children. Do not use packaging bags in cribs, beds, carriages, or playpens.

Safety

- **Read these instructions** - Read all the safety and operating instructions before operating the product.
- **Retain these instructions** - Retain the safety and operating instructions for future reference.
- **Heed all warnings** - Adhere to all warnings on the product and in the operating instructions.
- **Follow all instructions** - Follow all operating and use instructions.
- **Do not use this apparatus near water** - The appliance should not be used near water or moisture – for example, in a wet basement or near a swimming pool and the like.
- **Clean only with a dry cloth.**
- **Do not block any ventilation openings.** Install in accordance with the manufacturer's instructions.
- **Do not install near any heat sources** such as radiators, heat registers, stoves, or other apparatus (including amplifiers) that produce heat.
- **Do not defeat the safety purpose** of the polarized or grounding-type plug. A polarized plug has two blades with one wider than the other. A grounding type plug has two blades and a third grounding prong. The wide blade or the third prong are provided for your safety. If the provided plug does not fit into your outlet, consult an electrician for replacement of the obsolete outlet.
- **Protect the power cord** from being walked on or pinched particularly at plugs, convenience receptacles, and the point where it exits from the product. If the cord set is damaged, it must be replaced by a special cord set available from the manufacturer or its service agent.
- **Use only attachments/accessories** specified by the manufacturer.
- **Use only with the cart, stand, tripod, bracket, or table** specified by the manufacturer, or sold with the apparatus. When a cart is used, use caution when moving the cart/apparatus combination to avoid injury from tip-over.
- **The user must maintain** a minimum distance of 20CM from the device at all time.

- **Unplug this apparatus** during lightning storms or when unused for long periods of time.
- **Refer all servicing** to qualified service personnel. Servicing is required when the apparatus has been damaged in any way, such as power-supply cord or plug damaged, liquid has been spilled or objects have fallen into the apparatus, the apparatus has been exposed to rain or moisture, does not operate normally, or has been dropped.
- **This appliance is not intended for use** by young children or infirm persons without supervision. Young children should be supervised to ensure that they do not play with the appliance.



Cautions

- To prevent electric shock, match wide blade of plug to wide slot, fully insert.
- Do not place any sources of danger on the product (for example: liquid filled objects, lighted candles).
- Disconnect the power cord to shut off when find trouble or not in use. The power cord shall be readily operable.
- Use of controls or adjustments or performance of procedures other than those described herein, may result in hazardous radiation exposure or other unsafe operation.
- The power cord/appliance coupler is used as the disconnect device, the disconnect device must remain readily operable.
- The rating label is located at the bottom or back of the product.
- The use of apparatus in tropical and moderate climates.

Battery precautions

- Do not mix batteries (old and new or carbon and alkaline).
- Do not dispose of batteries in fire or water.
- Recycle or dispose of batteries as per state and local guidelines.
- Danger of explosion if battery is incorrectly replaced. Replace only with the same or equivalent type.
- When the remote control is not to be used for a long time (more than a month), remove the battery from the remote control to prevent it from leaking.
- If the batteries leak, wipe away the leakage inside the battery compartment and replace the batteries with new ones.
- Keep away the batteries from heat or moisture.
- Do not carry or store batteries with other metallic objects. Doing so could cause batteries to short circuit, leak or explode.
- Never recharge a battery unless it is confirmed to be a rechargeable type.
- If the battery compartment does not close securely, stop using the product and keep it away from children.

Disposal of your old product and battery

Your product is designed and manufactured with high quality materials and components, which can be recycled and reused.

This product may contain lead and mercury. Disposal of these materials may be regulated due to environmental considerations. For disposal or recycling information, please contact your local authorities.

This product contains batteries:

- Do not incinerate. Batteries may explode if overheated.
- For disposal or recycling information, please contact your local authorities.

CAUTION: Risk of explosion if the battery is replaced by an incorrect type.

CAUTION: Replacement of a battery with an incorrect type that can defeat a safeguard.

CAUTION: Disposal of a battery into fire or a hot oven, or mechanically crushing or cutting of a battery, that can result in an explosion.

CAUTION: Leaving a battery in an extremely high temperature surrounding environment that can result in an explosion or the leakage of flammable liquid or gas.

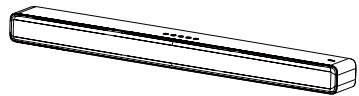
CAUTION: A battery subjected to extremely low air pressure that may result in an explosion or the leakage of flammable liquid or gas.

2 Welcome

Congratulations on the purchase of your new TCL Soundbar! After it is set up and connected, you can experience a superb sound quality and state-of-the-art design to best fit your home entertainment system. You are recommended to read through this user manual which helps you set up, connect and operate the product easily and properly.

Let's get started.

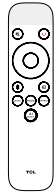
What's in the box



Soundbar



Subwoofer



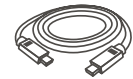
Remote control



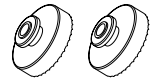
AAA battery x 2



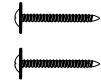
Power cord x 2
(Cable length: 1.5M)



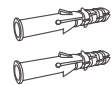
HDMI cable
(Cable length: 1.5M)



Wall mount bracket x 2



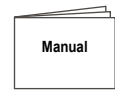
Wall mounting screw x 2



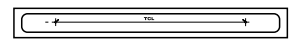
Wall anchor x 2



Warranty card

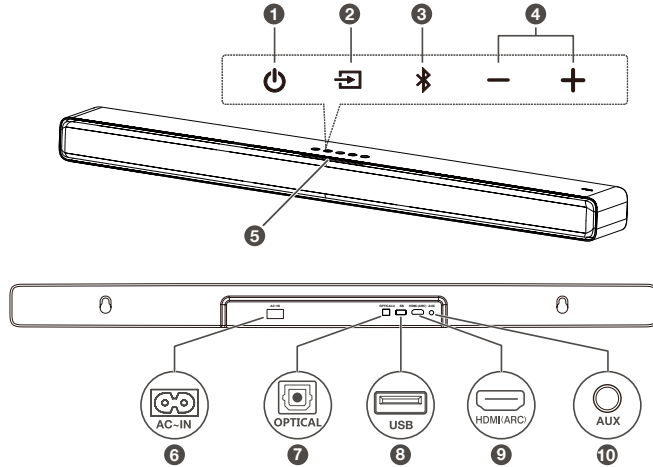





Manual

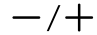


Wall mount template

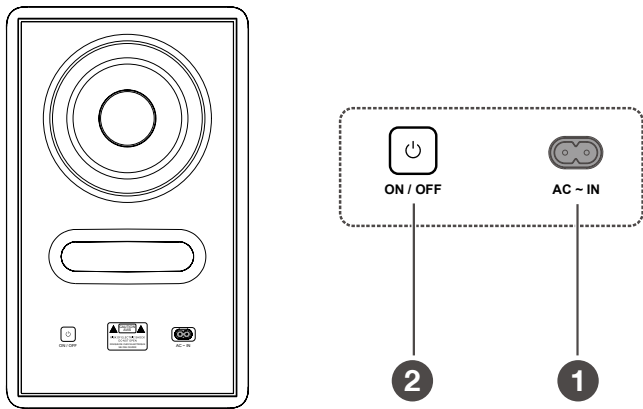
Overview of the Soundbar



- 1 
Short Press: Power On/Sleep
Long Press: Power Off
- 2 
Short press: Switch input sources (HDMI (ARC)/Optical/
AUX/USB/Bluetooth)
Long press: Enter Subwoofer pairing (If Subwoofer
disconnected)
- 3 
Short press: Switch the audio input between Bluetooth
and the previous input
Long press: Bluetooth Pairing

- 4 
Press to increase or decrease the volume level
- 5 **Input Source LED Indicator**
LED light is visible between the cloth and the top case
Indicates current input source with different color
- 6 **AC input power connector**
- 7 **Optical input connector**
- 8 **USB Type A connector (only for music playback)**
- 9 **HDMI (ARC) connector**
- 10 **AUX input connector**



Overview of the wireless Subwoofer




1 AC input power connector

2 ON/OFF Toggle switch

THE SUBWOOFER WILL PAIR AUTOMATICALLY WITH SOUNDBAR UPON FIRST USE. In case of a problem, take the following steps to manually pair:

1. Press and hold the  button on the Subwoofer for 2 seconds until an amber light begins flashing above  button.

2. Press and hold the  button on the Soundbar for 5 seconds until a green LED indicator flashes on Soundbar. After a short while, the Subwoofer LED will turn solid.

3. The Subwoofer is now connected to the Soundbar.

Note: Manual pairing is needed only in case of troubleshooting.

Set up your Soundbar system

Notes

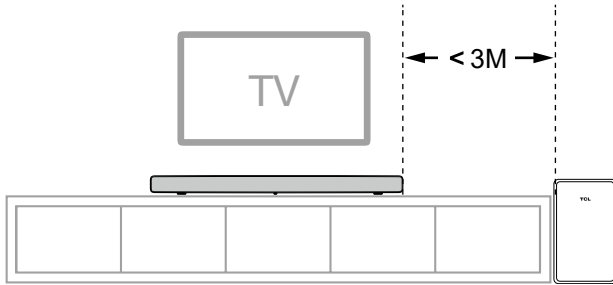
- Make sure you read all the safety information before you mount the Soundbar on the wall.
- Make sure you use screws provided or specified by the authorized manufacturer.
- TCL bears no responsibility for accidents or damage caused by improper wall mounting and screws installation or insufficient wall strength, etc.
- Additional tools (not supplied) are required for installation.
- You can choose to place your Soundbar below the center of your TV or mount it on the wall.

Position your Soundbar and Subwoofer

The ideal place to position the Soundbar is centered underneath your TV.

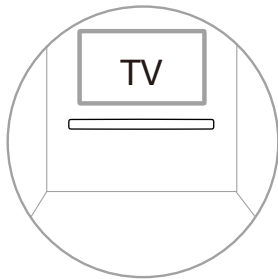
You are recommended to place the Soundbar on the top of the cabinet and right below the center of your TV.

The distance between the Subwoofer and the Soundbar should be less than 3 meters.

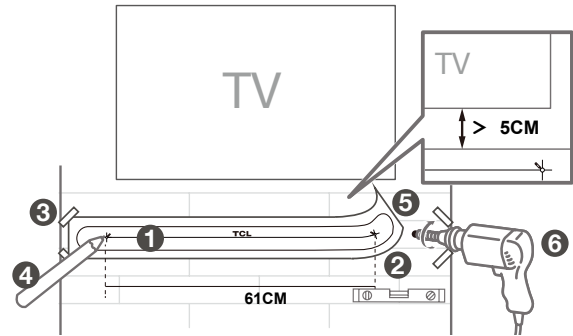


Mount your Soundbar on the wall

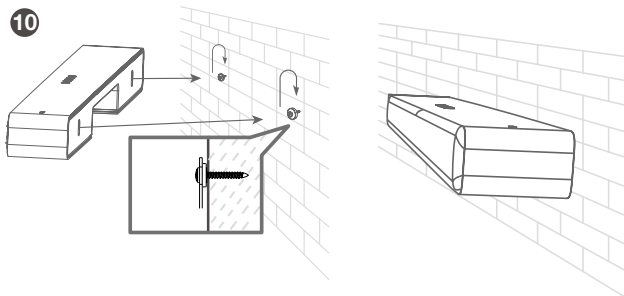
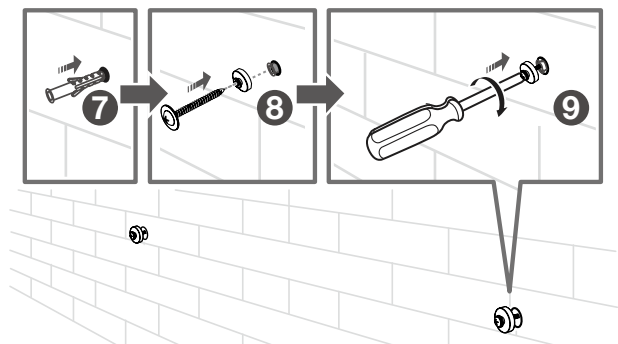
- 1 Place the supplied wall mount template on the wall.
Make sure the wall mount template is at least 5CM below the center of the TV.
- 2 Use a level to make sure the wall mount template is positioned accurately.
- 3 Use the tape to stick the wall mount template firmly on the wall.



- 4 Mark on the wall using each marking on the template through the mounting holes.
- 5 Take away the wall mount template.
- 6 Drill a screw hole at each marking on the wall.



- 7 Insert the wall anchors in the holes on the wall.
(Reserve the rubber cushions for future use)
* The rubber cushions can be used as Soundbar mats when you put the Soundbar on the table
- 8 Insert the supplied screws with the wall brackets into the hole of the wall anchors.
- 9 Fix and tighten the wall bracket screws on the wall. (Keep space between the screw cap and the brackets).
- 10 Pick up the Soundbar and attach it to the wall screws, similar to how you would hang a picture. Make sure everything is tight.



Notes

- Check the installation location before you mount the Soundbar on the wall (see 'Mount your Soundbar on the wall' on page 10).
- You may consider to connect the cables first before mounting the Soundbar on the wall.

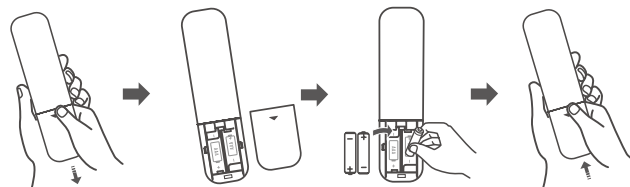
Install/replace the Remote Control batteries

Warnings

- *Danger of explosion if battery is incorrectly replaced. Replace only with the same or equivalent type.*

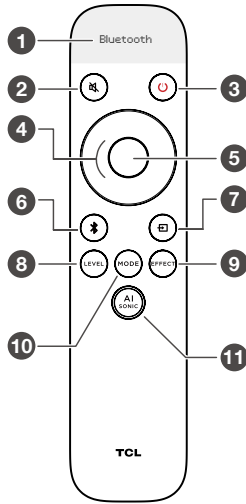
Caution

- 1 Open the battery compartment, remove the old batteries if necessary.
- 2 Place two new AAA batteries into the battery compartment with the correct polarity (+/-).
- 3 Close the battery compartment.



Setup is complete. Your Soundbar is ready to use. For more information about how to access different connection options on your Soundbar, see the following chapter.

Overview of the Remote Control



- ❶ Screen display
- ❷ Short press: mute / unmute the sound
- ❸ Short press: power on / sleep
Long press: power off
- ❹ Up/Down: increase / decrease the volume
Left/Right: switch to previous/next music
(Under Bluetooth or USB mode)
- ❺ Short press: play / pause

- ❻ Long press: Bluetooth Pairing
Short Press: select Bluetooth mode
- ❼ Short press to enter input source menu
Keep short press or use Up/Down/Left/Right to switch:
HDMI-ARC/Optical/AUX/USB/Bluetooth
- ❽ Short press to enter the Level Menu
Switch different Level Options¹ with Left/Right
Use Up/Down to adjust the value
- ❾ Short press to enter Effect Menu
Use Left/Right to switch different Effect Options²
Use Up/Down to adjust Effect ON/OFF or 1/2/3 Effect
- ❿ Short Press to enter sound modes menu.
Keep short press or use Up/Down/Left/Right to switch
sound modes: Standard, Voice, Music, Movie, Game,
Sports
- ⓫ Short Press to enter AI Sonic-Adaptation³ Menu
Short press "Up/Down" to switch different
AI Sonic Adaptation: Default/Sonic 1/Sonic 2/Sonic 3

1. Level Options: Bass, Treble.
2. Effect Options: BassBoost, Dialogue Enhance, Surround Enhance, Night, DTS Virtual:X, Default Light Color
3. AI-Sonic Adaptation: Learn more in TCL HOME App.

This Soundbar can be fully controlled via the TCL Home App, including power, volume, input switching, effects, AI Sonic-Adaptation and more. Use the TCL Home App to explore additional smart features. Please download the latest version from the app stores.



3 Connect your Soundbar system

After you have fixed the position of the Soundbar, you can start connecting it to your TV or other devices and listen to the audio through your Soundbar. Make sure you have muted the audio of your TV or device. For information, check the user manual of your TV or device.

Connect with the HDMI cable

Note

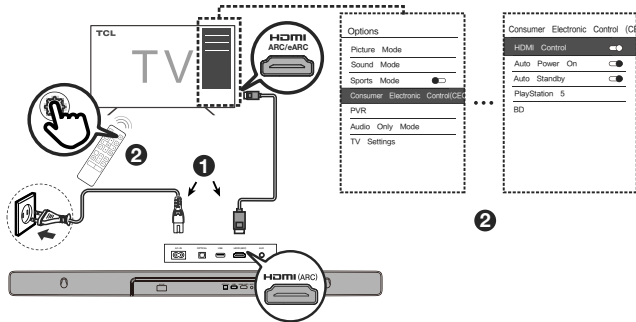
- Make sure your TV or device supports the HDMI ARC feature. For information, check the user manual of your TV or device.

Connect one end of the HDMI cable to the HDMI ARC input connector on your Soundbar and another end to the HDMI ARC output connector of your TV or device.

To get the best possible audio experience using the HDMI cable, follow below given steps:

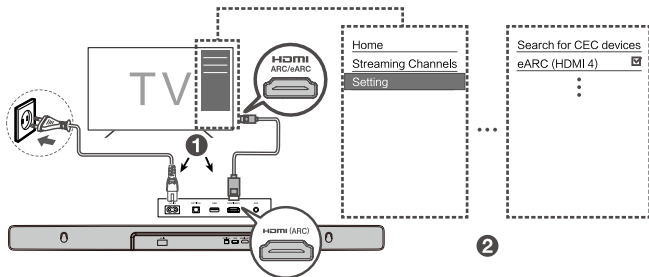
For TCL TV:

- ① Connect HDMI cable from the HDMI (ARC) interface on the Soundbar to the HDMI (ARC/eARC) interface on the TV.
- ② Enable the CEC function in the settings of the TCL TV. (See TV User Manual for instructions)



For other TV brands:

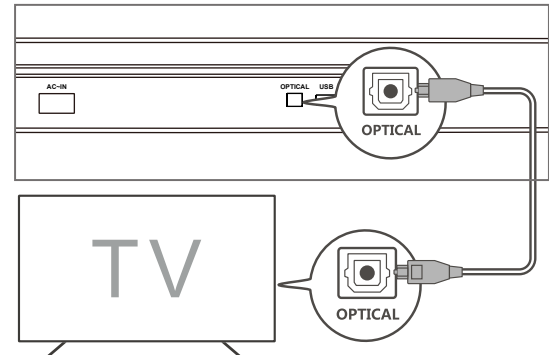
- 1 Connect HDMI cable from the HDMI (ARC) interface on the Soundbar to the HDMI (ARC/eARC) interface on the TV.
- 2 Enable the CEC function in the settings of the TV.



★ CEC (Consumer Electronic Control) function naming may differ by TV manufacturer. This feature may be called CEC, Anynet+, SimpLink, BRAVIA Link, EasyLink or VIERA Link. Please see your TV's user manual for more information.

Connect with the optical cable


- 1 Remove the protective caps from the optical cable when necessary.
- 2 Connect one end of the optical cable to the optical input connector on your Soundbar and another end to the optical output connector of your TV or device.

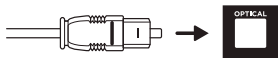


Note

- If there is no sound output from the Soundbar, try to activate the PCM signal output on your TV or device. PCM is used to convert analog audio signals into digital audio signals in most devices. For more information of how to activate the PCM signal output, check the user manual of your TV or device.

Direction for setting up your Soundbar using an optical cable

 Do not bend or kink the optical cable (SPDIF) as it is fragile and can easily get damaged and broken.



To get the best possible audio experience using the optical cable:

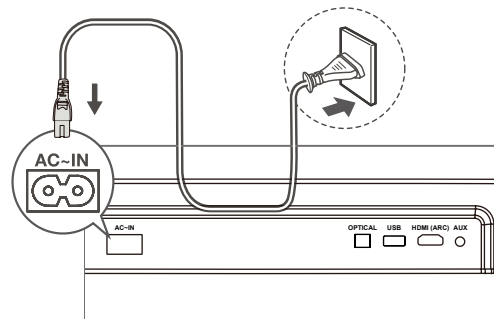
- 1 Press the Home button on your TCL TV Remote.
- 2 Navigate to **Audio option** under **Settings**.
- 3 Uncheck the “**TV speaker enabled**” option.
- 4 Under **S/PDIF** and **ARC**, select **PCM-Stereo**.

Notes

- *Different devices may have different menu options.*
- *Devices such as Blu-ray players, set-top boxes, etc. are also applicable.*

Connect your Soundbar to power supply

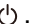



- 1 Make sure that you have completed all other connections before connecting the Soundbar to power supply.
- 2 Make sure the power supply voltage complies with your country’s safety standards (see ‘Specifications’ on page 29)
- 3 Connect one end of a supplied AC power cord to the AC input connector on your Soundbar and another end to the power socket on the wall.




Connect the Soundbar with your Bluetooth device

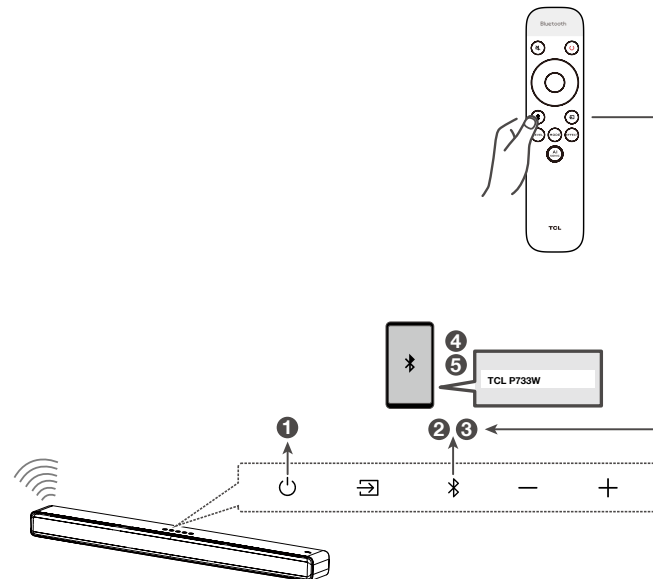
Notes

- Make sure your wireless device supports the Bluetooth function.
- The operational range between the Soundbar and your Bluetooth device is approximately 10 meters (without any obstacle between the Bluetooth device and the Soundbar).

- 1 Press .
- 2 Press .
- 3 Press and hold  on the Remote Control or Press and hold  on your Soundbar.
 - ➔ You will see blue lights cycle from left to right.
 - ➔ The Soundbar is ready to pair
- 4 Power on your Bluetooth device and activate its Bluetooth function.
- 5 Select **TCL P733W**.
 - ➔ You will see the blue light on for 5 seconds.
 - ➔ Pairing is successful.
- 6 If you want to pair another device, please repeat step 3.

Tip

- If you cannot find the model name **TCL P733W** on your Bluetooth device, press and hold  on the Remote Control. You will see blue light flashing. Now the Soundbar is coming into the pairing mode.





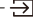
Connect your wireless Subwoofer to the Soundbar

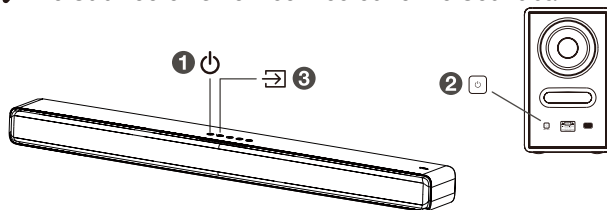
When the wireless Subwoofer is connected, you can enjoy powerful deep bass sounds and a truly immersive audio experience.

Auto pairing

Make sure both the Soundbar and wireless Subwoofer are connected to the power supply and are turned on.

THE SUBWOOFER WILL PAIR AUTOMATICALLY WITH SOUNDBAR UPON FIRST USE. In case of a problem, take the following steps to manually pair:


- ➔ Press and hold the  button on the Subwoofer for 2 seconds until an amber light begins flashing above  button.
- ➔ Press and hold the  button on the Soundbar for 5 seconds until a green LED indicator flashes on the Soundbar. After a short while, the Subwoofer LED will turn solid.
- ➔ The Subwoofer is now connected to the Soundbar.

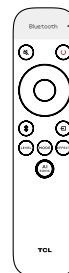


If you have more than one devices to be connected, please connect the next one after connecting the previous one successfully.

4 Use your Soundbar system

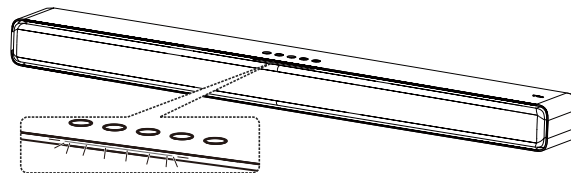
Use your Soundbar with the top panel or Remote Control

- 1 Make sure the Soundbar is properly connected to the power supply and sources.
- 2 Press  at the top panel of your Soundbar or Remote Control to switch to the correct source.



The LED display will show the available menu options and/or confirm the selection made.

The LED display on the Soundbar gives you information about the LED Behavior on Soundbar. LED light is visible between the cloth and the top case.



Remote Control	Remote Control status	Based on Default Light color selected
	Power	White LED lights breathing
	(Un) Mute Vol + Vol -	Length of LED lights show current Volume level
	Previous (⏮) Next (⏭)	Previous (⏮) LED lights run from right to left Next (⏭) LED lights run from left to right
	Bluetooth	Bluetooth pairing: Blue LED light moves from left to right and repeats until successful connection
	HDMI Optical Aux USB Bluetooth	HDMI-ARC: Magenta light on for 3 seconds Optical: Yellow light on for 3 seconds Aux: Green light on for 3 seconds USB: Cyan light on for 3 seconds Bluetooth: Blue light on for 3 seconds
	Bass Treble	Level 0: center light on; Level 1 to 5: center to the right light on; Level -1 to -5: center to the left light on
	Standard Voice Music Movie Game Sports	LED lights breathing
	BassBoost DialEnhance SurrEnhance	BassBoost, Dialogue Enhance, Surround Enhance, Night, DTS Virtual X, Default Light Color On: LED light turns on from the side and moves to the center Off: LED light turns on from the center and moves to the sides Default Light Color (Default light setting) Light1: White (Default) Light2: Sunset Light3: Ocean
	All Sonic	Sonic1/Sonic2/Sonic3: LED light turn on from the side and move to the center Default: LED light turn off from the center to the sides

Note: After powering on your Soundbar, if there is no operation performed on either the Soundbar or Remote Control within 10 seconds, all LED indicators on the Soundbar will turn off and light up again when the operation is resumed.

Tip: You can use more advanced functions on the Remote Control (see 'Overview of the Remote Control' on page14).

Listen to music from your Bluetooth device

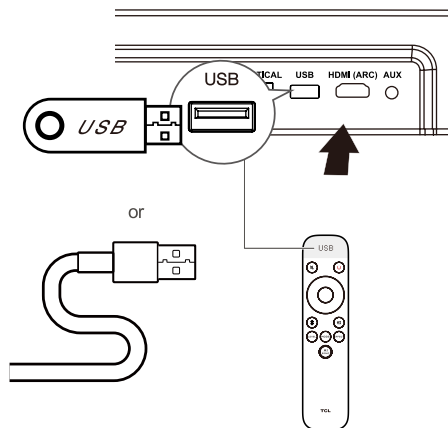
- 1 Make sure that your device supports A2DP and/or AVRCP. For information, check the specification of your device.
- 2 Pair your Bluetooth device with the Soundbar (see 'Connect the Soundbar with your Bluetooth device' on page 21).
- 3 Start listening to music stored in your Bluetooth device through the Soundbar.
 - If your Bluetooth device supports A2DP, you can listen to music, but you cannot control the playback.
 - If your Bluetooth device supports AVRCP, you can listen to music and control music playback with the Remote Control. Press the center button to pause or resume music playback. Press left/right button to skip to the previous/next track.

Note

- The operational range between the Soundbar and your Bluetooth device is approximately 10 meters (without any obstacle between the Bluetooth device and Soundbar).

Use the USB cable or device for music playback

- Press play/pause button on the Remote Control to listen to/pause/ resume the music.
- Press left/right button the Remote Control to skip to the previous or next track.
- Press up/down button to increase or decrease the volume level.



Tip

- This Soundbar can support USB devices of up to 64GB memory and the supported file format is MP3.
- Music in folders of the USB device should be within 5 (including 5) directory levels. Otherwise, the Soundbar can not detect the music.

5 Specifications

Product Name

3.1 Channel Soundbar with Dolby Audio, DTS Virtual:X and Wireless Subwoofer

Soundbar

- Power Supply: AC 100-240V~50/60Hz
- Power consumption: 38W
- Power consumption at standby mode: $\leq 0.5W$
- Impedance: 6Ω
- Frequency response: 160Hz-20KHz
- Dimensions (WxHxD): 900x68x98MM
- Weight: 2.3 KG
- Operating temperature: $0^{\circ}C - 45^{\circ}C$

Wireless Subwoofer

- Power Supply: AC 100-240V~50/60Hz
- Power consumption: 50W
- Power consumption at standby mode: $\leq 0.5W$
- Frequency response: 40 Hz-120 Hz
- Frequency range: 5732MHz-5848MHz
- Max transmitting power: 13dBm
- Dimensions (WxHxD): 248x365x220MM
- Weight: 5.6 KG

Bluetooth

- Bluetooth version: 5.2, Bluetooth profile - Bluetooth stereo supported (Advanced Audio Distribution Profile - A2DP; Audio Video Remote Control Profile - AVRCP)
- Frequency range: 2402 Mhz – 2480 Mhz
- Max transmitting power: 15dBm

Remote Control

- Distance/Angle: 6m/ 30°
- Battery type: 1.5V AAA battery x 2, user replaceable.

6 Notice

Disposal of your old product and battery



Your product is designed and manufactured with high quality materials and components, which can be recycled and reused.

Remove the disposable battery

To remove the disposable batteries, see the section 'Install/replace the Remote Control battery'.

Environmental protection and sustainability

We have omitted all unnecessary packaging and make sure it is eco-friendly and sustainable.

Trademarks



Manufactured under license from Dolby Laboratories. Dolby, Dolby Audio, and the double-D symbol are trademarks of Dolby Laboratories Licensing Corporation.



The Bluetooth® word mark and logos are registered trademarks owned by Bluetooth SIG, Inc. and any use of such marks by TTE Corporation is under license. Other trademarks and trade names are those of their respective owners.



For DTS patents, see <http://patents.dts.com>. Manufactured under license from DTS, Inc. DTS, Digital Surround, Virtual:X, and the DTS logo are registered trademarks or trademarks of DTS, Inc. in the United States and other countries.
© 2023 DTS, Inc. ALL RIGHTS RESERVED.



"The terms HDMI, HDMI High-Definition Multimedia Interface, HDMI trade dress and the HDMI Logos are trademarks or registered trademarks of HDMI Licensing Administrator, Inc."

7 FAQ


No power

- Make sure the AC power cord and AC input connector are connected properly.
- Make sure there is power supply.
- Make sure the Soundbar has turned on.

No sound

- Make sure the audio cable is connected to the Soundbar and your device.
- Make sure you have selected the correct source.
- Press up button to increase the volume level.
- Make sure the Soundbar is not muted.

Low voice

- Use the Remote Control to adjust the volume.
- May open Night mode, please press  and use up/down button to exit the Night mode.

* Other EQs cannot be selected in Night Mode.

The Remote Control does not work.

- Make sure you have selected the correct source.
- Make sure the distance of Remote Control and the Soundbar is within operational range.
- Make sure the battery is correctly inserted and is working.
- Make sure the Remote Control is close to the Remote Control sensor of the Soundbar.

I hear distorted sound.

- Make sure all cables are properly connected.
- Make sure you have selected the correct source.
- Make sure the TV is muted if you play audio from the TV.

I cannot find the Bluetooth name of this Soundbar on my Bluetooth device.

- Make sure the Bluetooth function is activated on your Bluetooth device.
- Make sure the Soundbar has paired with your Bluetooth device.

TCL support:

Please visit www.tcl.com

WE ARE READY TO HELP

contact us first
with any questions



**TAKE CARE WHEN
REMOVING THE Soundbar**

Copyright © 2023 TCL. All rights reserved.
P733W-AU_EN_UM_V1.0