




Installation Guide

8-Port Gigabit Easy Smart Switch with 4-Port PoE


TL-SG108PE

LED Explanation


Power


 On: Power on
Off: Power off

PoE Max

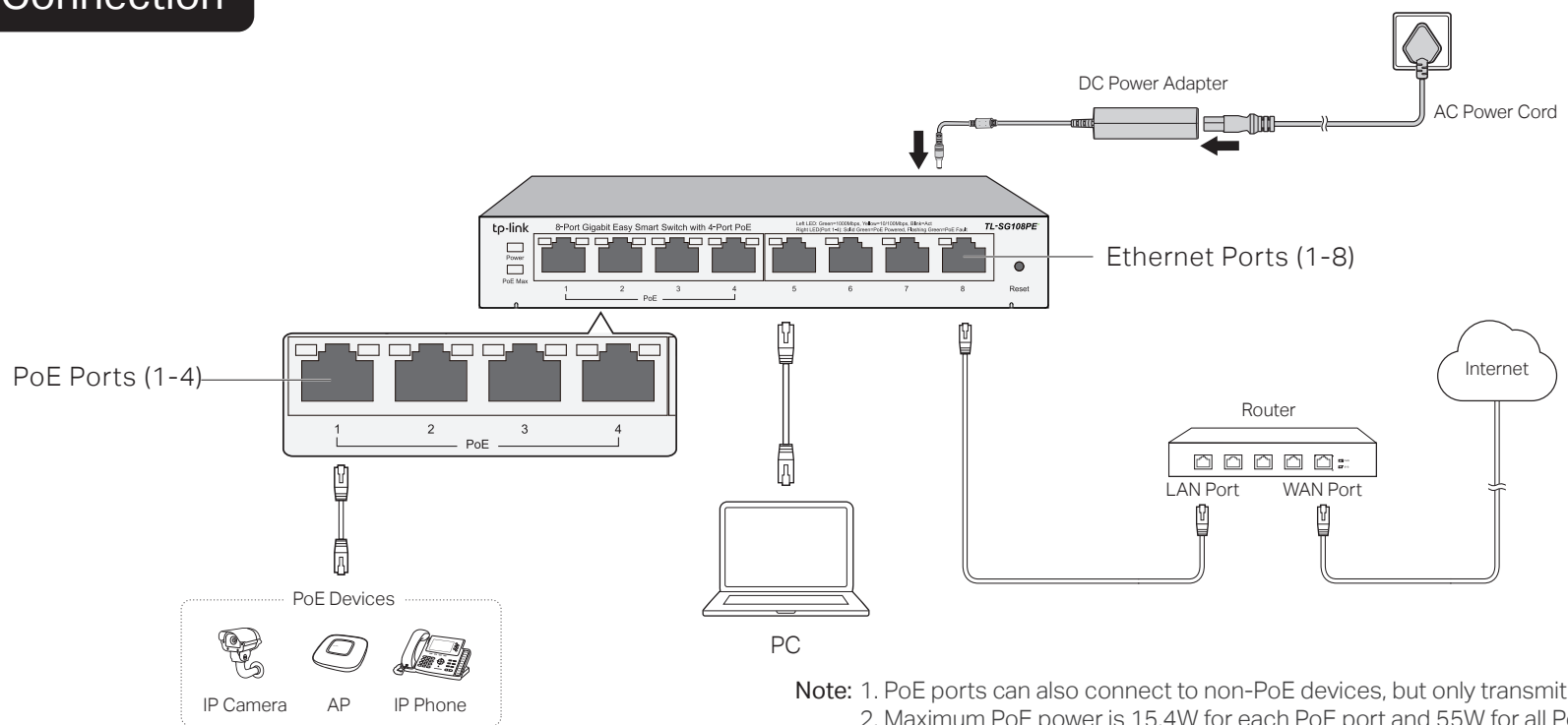
 On: $46W \leq \text{Total power supply} < 55W$
Flashing: Total power supply = 55W
Off: Total power supply < 46W

Link/Act and PoE Status

 Link/Act (Port 1-8)
Green: Running at 1000Mbps
Yellow: Running at 10/100Mbps
Flashing: Transmitting/receiving data
Off: No device is linked to the corresponding port

 PoE Status (Port 1-4)
On: Providing PoE power
Flashing: PoE fault
Off: Not providing PoE power

Connection



Note: 1. PoE ports can also connect to non-PoE devices, but only transmit data.
2. Maximum PoE power is 15.4W for each PoE port and 55W for all PoE ports.

Configuration

The switch is plug and play. To manage the switch, you can use the Web-based GUI or the configuration utility.

Using the Web-based GUI



- Find the IP address of the switch.
 - By default, the switch receives an IP address from a DHCP server (or a router that functions as a DHCP server) in your network. You can find this IP address on the DHCP server.
 - If the switch cannot receive an IP address from a DHCP server, it uses the static IP address of **192.168.0.1**, with a subnet mask of **255.255.255.0**.
- Configure IP address on your PC to ensure the switch and PC are in the same subnet.
 - If the switch uses an IP address assigned by a DHCP server, set your PC to obtain an IP address automatically from the DHCP server.
 - If the switch uses the static IP address of **192.168.0.1**, configure your PC's IP address as **192.168.0.x** ("x" ranges from 2 to 254), and subnet mask as **255.255.255.0**.
- Launch a web browser on your PC. Enter the IP address of the switch in the address bar and press **Enter**. Log in with **admin** as both user name and password.

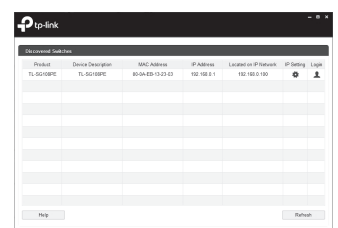
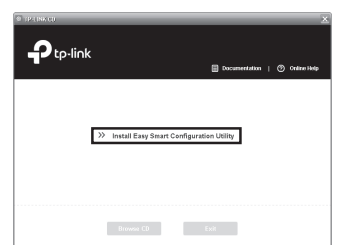
Now you can configure the switch using the Web-based GUI. For further information, refer to the **User Guide**. Go to <https://www.tp-link.com/support>, search the model number of your switch, and you can find this guide on the product **Support** web page.

Note: If the switch gets a new IP address from the DHCP server, your connection to the switch will be lost. Enter the new IP address in your browser to access the switch again.

Using the Configuration Utility

The utility is only supported on Windows so far. The utility is provided on the resource CD, also you can download the utility from the official website: <https://www.tp-link.com/support>. The following instruction takes installing from the resource CD as an example.

- Insert the resource CD into the PC.
- The resource CD home screen will appear. If not, double click **AutoRun.exe** on the resource CD. Then click **Install Easy Smart Configuration Utility** on the home screen and follow the prompts to install the program.
- Double click the icon  on the desktop, and the utility home page displays a list of TP-Link Easy Smart Switches on the local network.
- Make sure the switch that you want to manage is in the same subnet as your computer. You can click  to configure the switch IP address.
- Double click the switch that you want to configure. Next enter the username and password (both **admin**) for it.



Now you can configure the switch using the configuration utility. For further information, refer to the **Easy Smart Configuration Utility User Guide**. Go to <https://www.tp-link.com/support>, search the model number of your switch, and you can find this guide on the product **Support** web page.

Specifications

General Specifications

Standard	IEEE802.3, IEEE802.3i, IEEE802.3u, IEEE802.3ab, IEEE802.3af, IEEE802.3x, IEEE802.1p, IEEE802.1q
Interface	8 10/100/1000Mbps RJ45 Ports Auto-Negotiation, Auto MDI/MDIX PoE Ports: Port1 - Port4, Total Power Supply: 55W
Data Transfer Rate	Ethernet: 10Mbps (Half Duplex), 20Mbps (Full Duplex) Fast Ethernet: 100Mbps (Half Duplex), 200Mbps (Full Duplex) Gigabit Ethernet: 2000Mbps (Full Duplex)
Network Media (Cable)	10Base-T: UTP category 3, 4, 5 cable (maximum 100m) EIA/TIA-568 100Ω STP (maximum 100m) 100Base-TX: UTP category 5, 5e cable (maximum 100m) EIA/TIA-568 100Ω STP (maximum 100m) 1000Base-T: UTP category 5e cable or above (maximum 100m) EIA/TIA-568 100Ω STP (maximum 100m)
Power Supply	External Power Adapter Input: 100-240VAC, 50/60Hz, Output: 48VDC /1.25A
Switching Capacity	16Gbps
MAC Address Table	4K, automatically learning, automatically aging
Wall Mountable	Yes
Distance Between Mounting Holes	110mm

Environmental and Physical Specifications

Certification	FCC, CE, RoHS
Operating Temperature	0 °C to 40 °C (32 °F to 104 °F)
Storage Temperature	-40 °C to 70 °C (-40 °F to 158 °F)
Operating Humidity	10% to 90%RH non-condensing
Storage Humidity	5% to 95%RH non-condensing

Frequently Asked Questions (FAQ)

Q1. Why is the Power LED not lit?

The Power LED should be lit when the power system is working normally. If the Power LED is not lit, please try the following:

A1: Make sure the power adapter is connected to the switch with power source properly.

A2: Make sure the voltage of the power supply meets the requirements of the input voltage of the switch.

A3: Make sure the power source is ON.

Q2. Why is the Link/Act LED not lit while a device is connected to the corresponding port?

Please try the following:

A1: Make sure that the cable connectors are firmly plugged into the switch and the device.

A2: Make sure the connected device is turned on and works normally.

A3: The cable must be less than 100 meters long (328 feet).

Q3. Why is port 4 not supplying power for PoE devices?

If connected PoE devices' total power consumption exceeds 55W, the system will cut off the power of port 4. For example, port 1, 2 and 4 are consuming 15.4W respectively, if an additional PoE device with 12W is inserted to port 3, the system will cut off the power of port 4 to compensate for the overload.



For technical support and other information, please visit <https://www.tp-link.com/support>, or simply scan the QR code.

FCC STATEMENT

This equipment has been tested and found to comply with the limits for a Class B digital device, pursuant to part 15 of the FCC Rules. These limits are designed to provide reasonable protection against harmful interference in a residential installation. This equipment generates, uses and can radiate radio frequency energy and, if not installed and used in accordance with the instructions, may cause harmful interference to radio communications. However, there is no guarantee that interference will not occur in a particular installation. If this equipment does cause harmful interference to radio or television reception, which can be determined by turning the equipment off and on, the user is encouraged to try to correct the interference by one or more of the following measures:

- Reorient or relocate the receiving antenna.
- Increase the separation between the equipment and receiver.
- Connect the equipment into an outlet on a circuit different from that to which the receiver is connected.
- Consult the dealer or an experienced radio/ TV technician for help.

This device complies with part 15 of the FCC Rules. Operation is subject to the following two conditions:

- 1) This device may not cause harmful interference.
- 2) This device must accept any interference received, including interference that may cause undesired operation.

Any changes or modifications not expressly approved by the party responsible for compliance could void the user's authority to operate the equipment.

CE Mark Warning

This is a class B product. In a domestic environment, this product may cause radio interference, in which case the user may be required to take adequate measures.

TP-Link hereby declares that the device is in compliance with the essential requirements and other relevant provisions of directives 2014/30/EU, 2014/35/EU, 2009/125/EC and 2011/65/EU.

The original EU declaration of conformity may be found at <http://www.tp-link.com/en/ce>

EU declaration of conformity

TP-Link hereby declares that the device is in compliance with the essential requirements and other relevant provisions of directives 2014/30/EU, 2014/35/EU, 2009/125/EC and 2011/65/EU.

The original EU declaration of conformity may be found at <http://www.tp-link.com/en/ce>

Industry Canada Statement

CAN ICES-3 (B)/NMB-3(B)



Safety Information

- Keep the device away from water, fire, humidity or hot environments.
- Do not attempt to disassemble, repair, or modify the device.
- Do not use damaged charger or USB cable to charge the device.
- Do not use any other chargers than those recommended.
- Adapter shall be installed near the equipment and shall be easily accessible.

- Use only power supplies which are provided by manufacturer and in the origin packing of this product. If you have any questions, please don't hesitate to contact us.

BSMI Notice

安全諮詢及注意事項

- 請使用原裝電源供應器或只能按照本產品注明的電源類型使用本產品。
- 清潔本產品之前請先拔掉電源線。請勿使用液體、噴霧清潔劑或濕布進行清潔。
- 注意防潮，請勿將水或其他液體潑灑到本產品上。
- 插槽與開口供通風使用，以確保本產品的操作可靠並防止過熱，請勿堵塞或覆蓋開口。
- 請勿將本產品置放於靠近熱源的地方。除非有正常的通風，否則不可放在密閉位置中。
- 請不要私自打開機殼，不要嘗試自行維修本產品，請由授權的專業人士進行此項工作。

限用物質含有情況標示聲明書

產品元件名稱	限用物質及其化學符號					
	鉛 Pb	鎘 Cd	汞 Hg	六價鉻 CrVI	多溴聯苯 PBB	多溴二苯醚 PBDE
PCB	○	○	○	○	○	○
外殼	○	○	○	○	○	○
電源適配器	—	○	○	○	○	○

備考1. "超出0.1 wt%"及"超出0.01 wt%"系指限用物質之百分比含量超出百分比含量基準值。
備考2. "○"系指該項限用物質之百分比含量未超出百分比含量基準值。
備考3. "—"系指該項限用物質為排除項目。

Explanation of the symbols on the product label

	DC voltage
	Indoor use only
	RECYCLING This product bears the selective sorting symbol for Waste electrical and electronic equipment (WEEE). This means that this product must be handled pursuant to European directive 2012/19/EU in order to be recycled or dismantled to minimize its impact on the environment. User has the choice to give his product to a competent recycling organization or to the retailer when he buys a new electrical or electronic equipment.