



# User's Manual

## SSD Upgrade Kits for Mac

### JetDrive™ 855/850/825/820

(Version 1.0)

**Part 1:** How to use Time Machine to back up or restore your Mac

**Part 2:** How to install the JetDrive SSD

#### **CAUTION!**

Please take the following electrostatic discharge (ESD) precautions during installation:

1. Work on a static-free surface
2. Wear an anti-static wrist strap

## **Part 1**

# **How to use Time Machine to back up or restore your Mac**

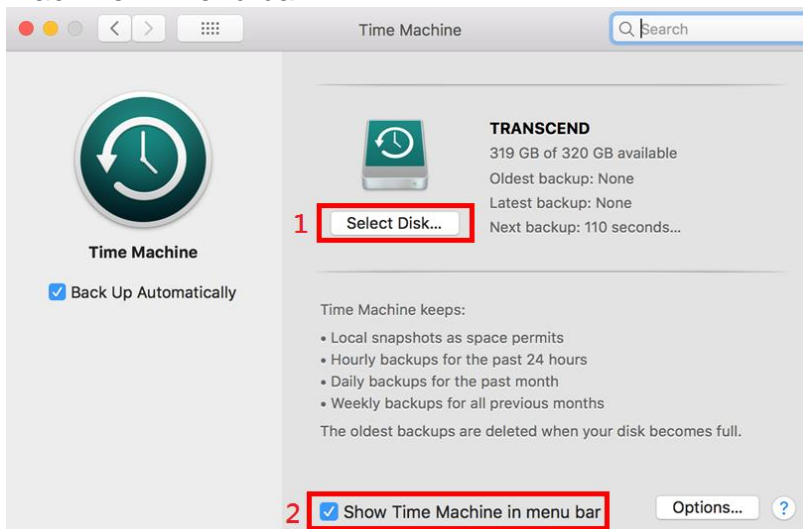
## Step 1

Connect a backup HDD or SSD to your Mac.




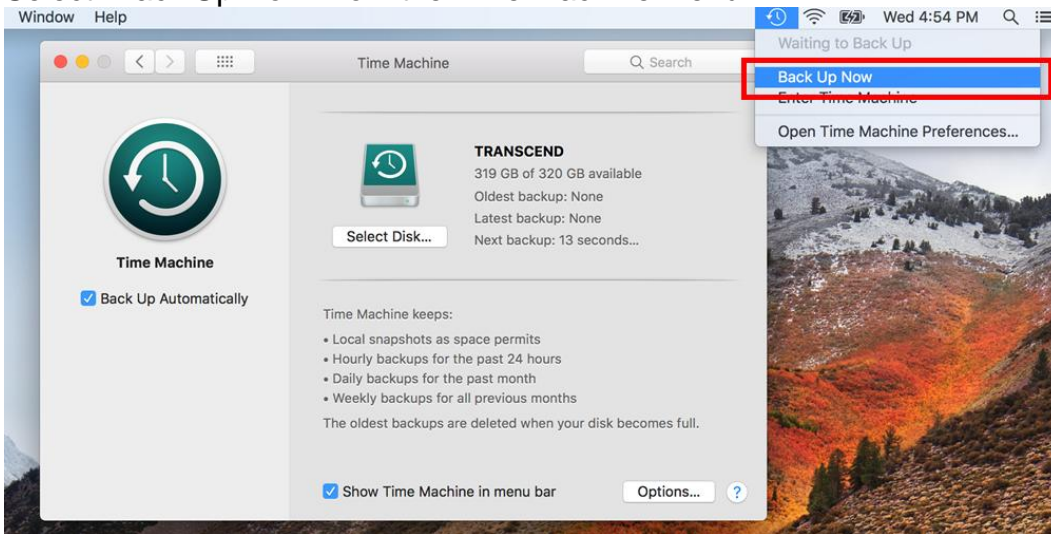
## Step 2

Open Time Machine and select the external disk as backup disk. Then check "Show Time Machine in menu bar".



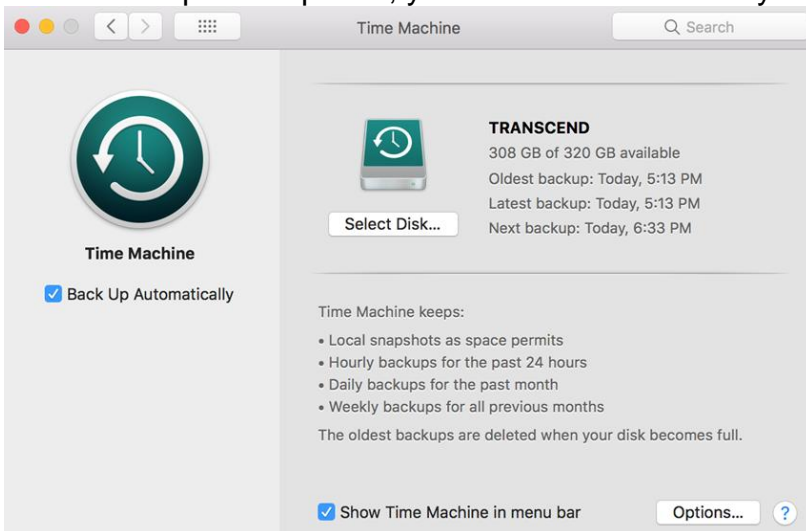
### Step 3

Select "Back Up Now" from the Time Machine menu .



### Step 4

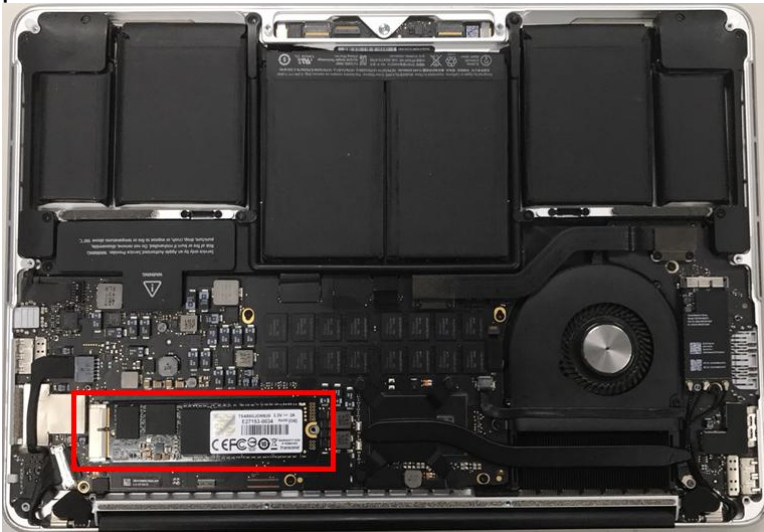
When backup is completed, you can see the summary of the backup.



### Step 5

Power off and replace your original SSD to the new JetDrive SSD.

Note: For details on how to remove the JetDrive SSD from the enclosure (if applicable), please see Part 2.



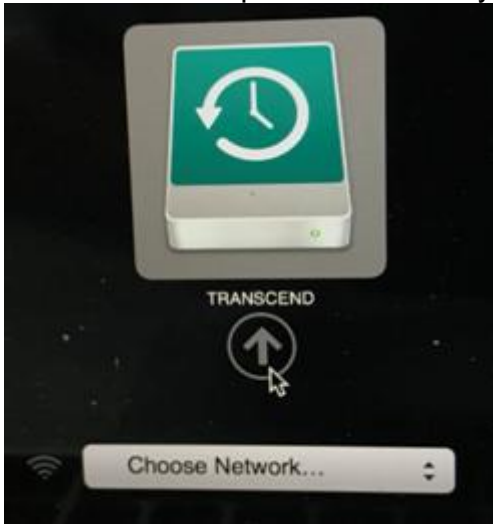
### Step 6

Power on your Mac and long press the "Option" key during startup.



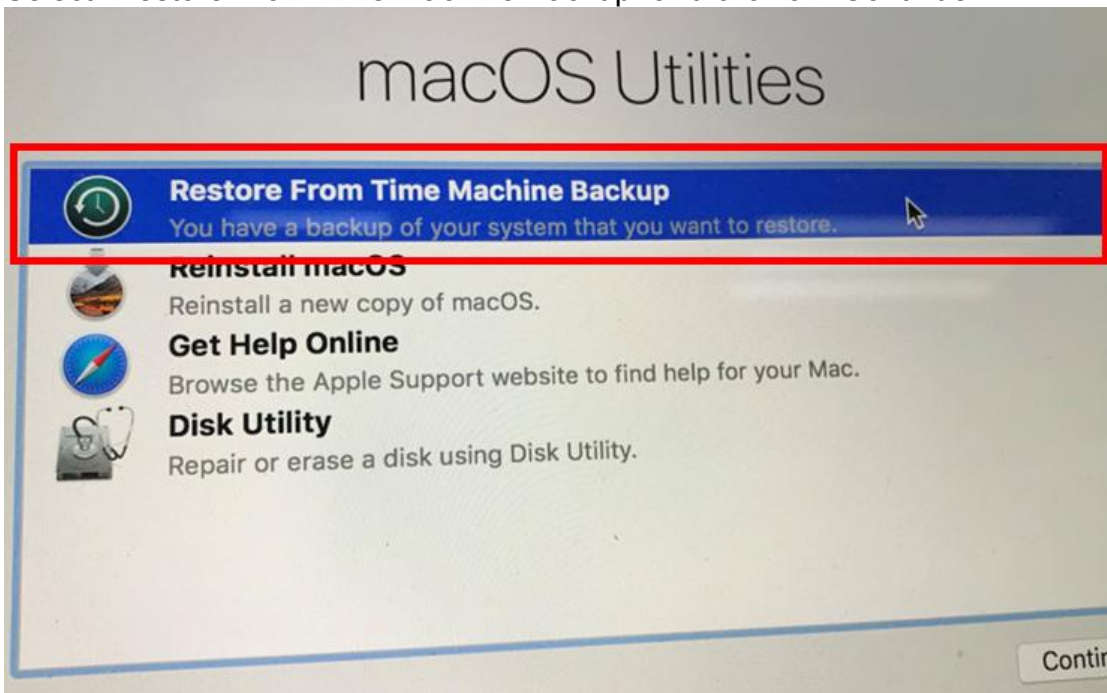
**Step 7**

Select the backup disk to restore your Mac OS.



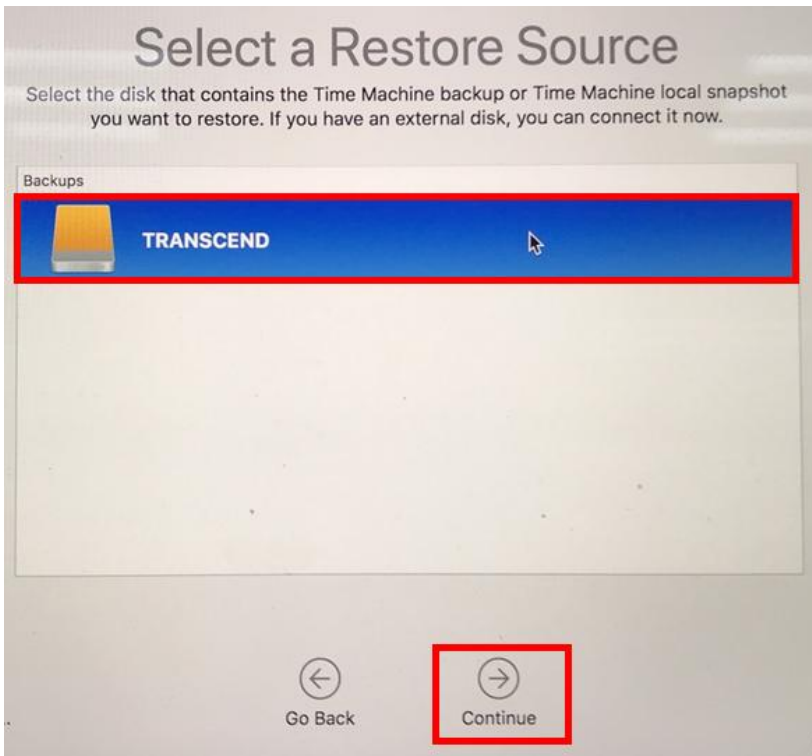
**Step 8**

Select "Restore From Time Machine Backup" and click on "Continue".



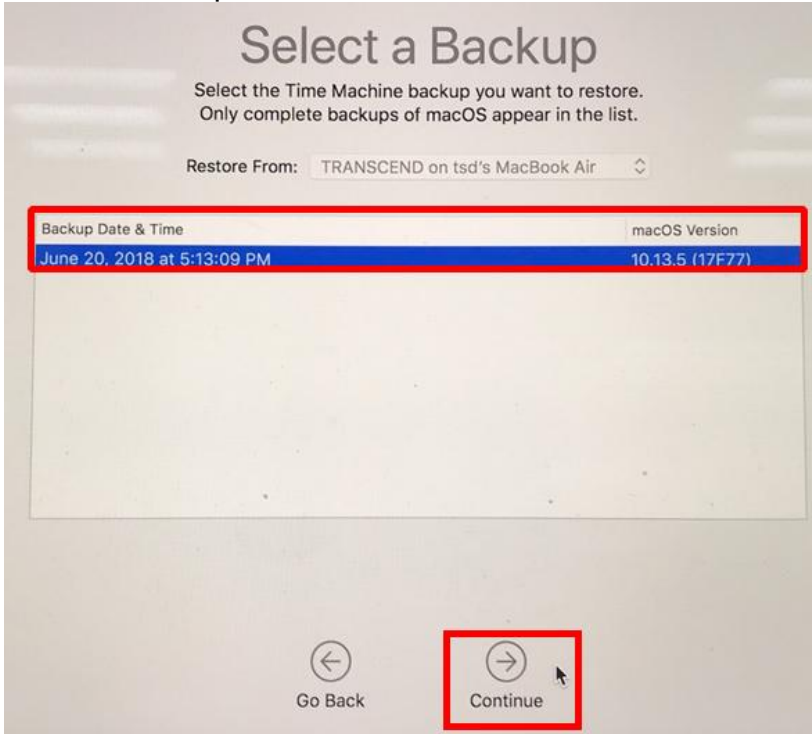
### Step 9

Select the external Backup disk to restore your Mac OS (same disk as in Step 7) and click on “Continue”.



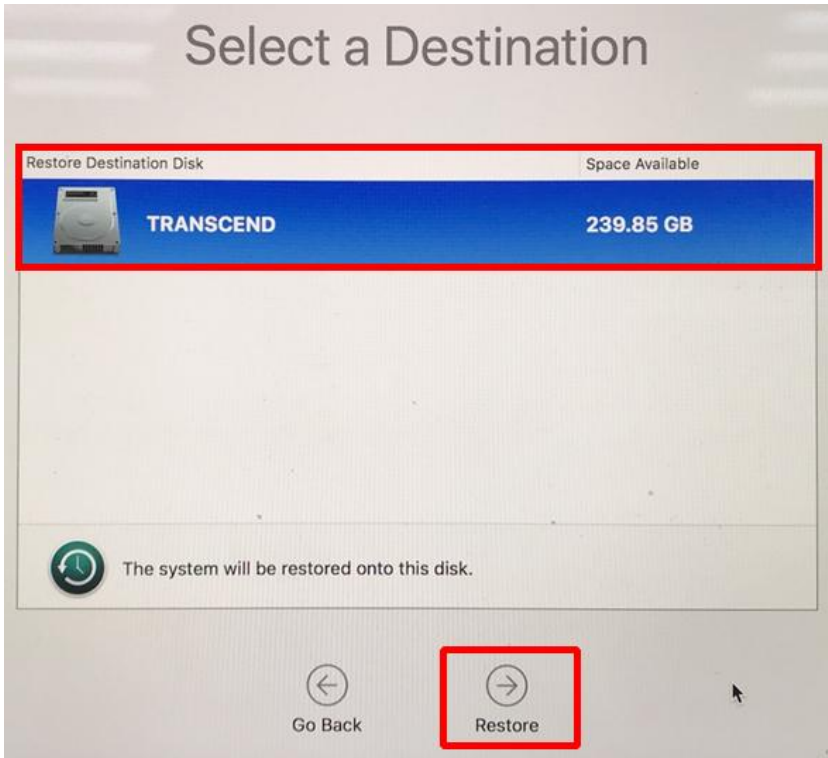
### Step 10

Select a backup date and time, and click on “Continue.”



**Step 11**

Choose the Destination (JetDrive) disk and click on "Restore".



\*Please refer to the Apple website for more information.



## **Part 2**

# **How to install the JetDrive SSD**

### Step 1



Use Time Machine® to back up your Mac® to an external storage device or to the JetDrive portable SSD.

Note: For more details on how to backup and restore your Mac, please see Part 1.

### Step 2

Use the T5 screwdriver to remove all the screws on the back cover of the enclosure.



### Step 3

Open the back cover of the enclosure.



#### Step 4

Use the T5 screwdriver to remove the screw holding the JetDrive SSD.



#### Step 5

Take out the JetDrive SSD.



#### Step 6

Use the P5 screwdriver to remove all the screws on the back cover.



### Step 7

Disconnect the battery.



### Step 8

Use the T5 screwdriver to remove the screw holding the SSD.



### Step 9

Take out the original SSD.



### Step 10

Insert the JetDrive SSD.



### Step 11

Replace the screw.



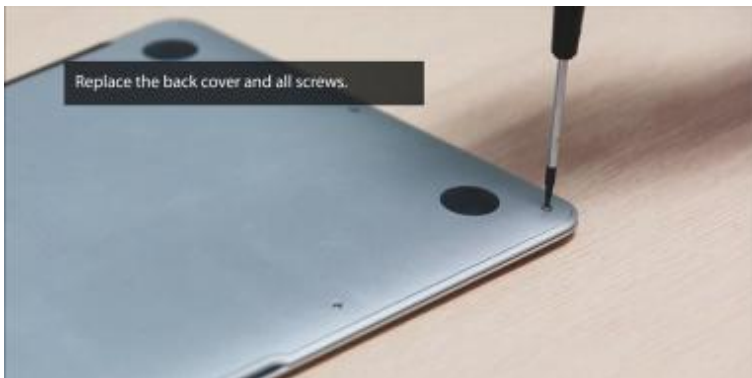
### Step 12

Reconnect the battery.



### Step 13

Replace the back cover and all screws.



### Step 14



Restore your Mac from the external hard drive that contains a backup of your Mac.

\*You may skip this step if you use the JetDrive to back up your Mac.