

## QUICK START GUIDE GUÍA DE INICIO RÁPIDO



**STEALTH  
600  
GEN 2**

**IMPORTANT  
READ BEFORE USING  
IMPORTANTE  
LEA ANTES DE USAR**

Any questions? ¿Preguntas?  
turtlebeach.com/support  
Model: Stealth™ 600 Gen 2 para  
auriculares de juego para Xbox

**IMPORTANT  
PLEASE MAKE SURE YOUR HEADSET  
IS UPDATED WITH THE LATEST FIRMWARE.**

**IMPORTANTE  
ASEGÚRATE DE QUE TUS AURICULARES ESTÁN  
ACTUALIZADOS CON EL ÚLTIMO FIRMWARE.**

Connect to the Turtle Beach Audio Hub for  
Windows or Mac® to update firmware.

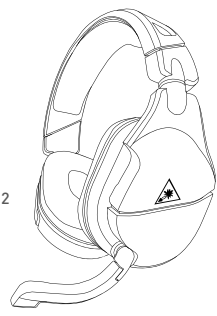
Conéctate a la aplicación Turtle Beach Audio Hub para  
Windows o Mac® para actualizar el firmware.

[turtlebeach.com/audiohub](http://turtlebeach.com/audiohub)



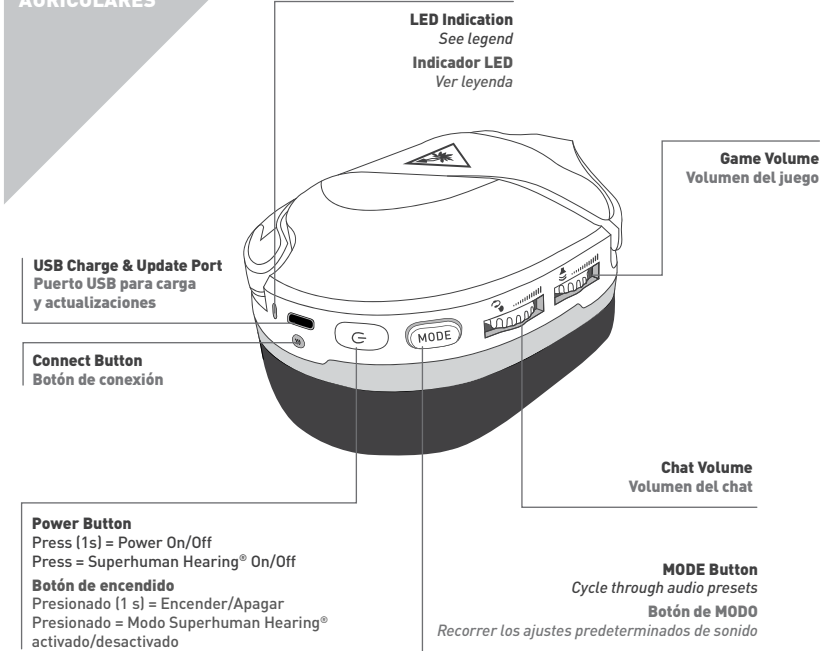
### CONTENTS CONTENIDO

**A** Stealth™ 600 Gen 2 Headset  
Auriculares Stealth™ 600 Gen 2



**B** USB-C Charging Cable  
Cable de carga USB-C

### HEADSET CONTROLS CONTROLES DE AURICULARES

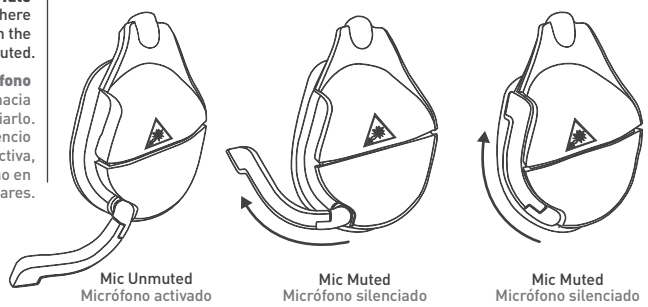


### SUPERHUMAN HEARING®

**Microphone Mute**  
Flip up mic to mute. There is an audible tone when the mic is muted or unmuted.  
Silenciar micrófono  
Voltea el micrófono hacia arriba para silenciarlo. Cuando el modo de silencio se activa o se desactiva, se escucha un tono en los auriculares.

Use Superhuman Hearing® Made to pinpoint quiet audio cues like enemy footsteps and weapon reloads. During gameplay, you can activate and deactivate Superhuman Hearing® by pressing the **POWER button once, quickly**.

Utiliza el modo Superhuman Hearing® para detectar los sonidos más leves, como las pisadas y las recargas de las armas de los enemigos. Durante el juego, puedes activar y desactivar el modo Superhuman Hearing® al presionar rápidamente el botón de encendido (POWER) una sola vez.

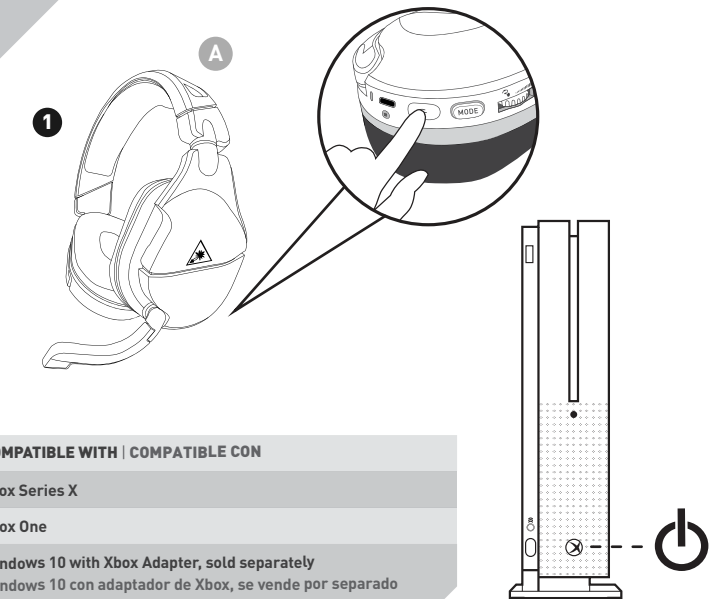


### EQ PRESETS | PREAJUSTES DE AUDIO DEL ECUALIZADOR

- Signature Sound | Sonido personalizado
- Bass Boost | Potenciador de graves
- Bass + Treble Boost | Potenciador de graves y agudos
- Vocal Boost | Potenciador de voz

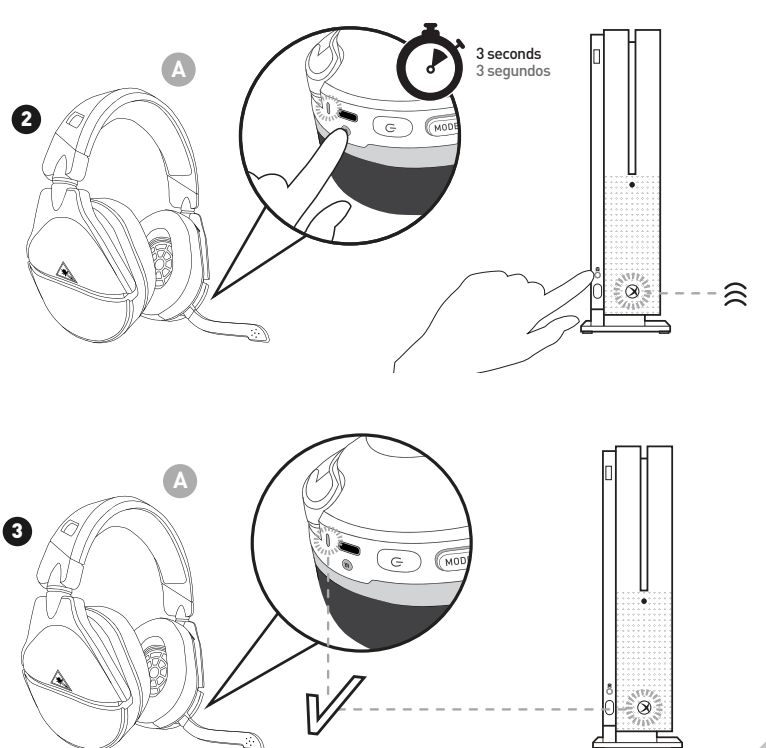
### SETUP FOR XBOX CONFIGURACIÓN PARA XBOX

For new Xbox console setup instructions, go to:  
Instrucciones sobre la configuración en una Xbox nueva en:  
[turtlebeach.com/Xboxsetup](http://turtlebeach.com/Xboxsetup)



**COMPATIBLE WITH | COMPATIBLE CON**

- Xbox Series X
- Xbox One
- Windows 10 with Xbox Adapter, sold separately
- Windows 10 con adaptador de Xbox, se vende por separado



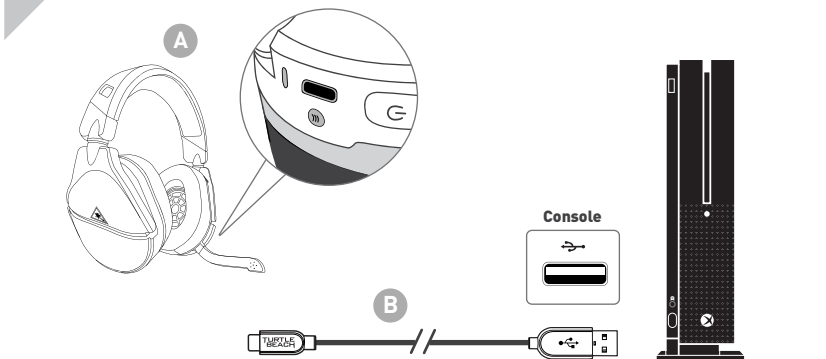
### SURROUND SOUND FOR XBOX (ONLY AVAILABLE ON XBOX) SONIDO ENVOLVENTE PARA XBOX (SOLO DISPONIBLE EN XBOX)

- EN** 1. Go to **Settings > General > Volume & Audio Output**.  
2. Set **Headset Audio** to **Windows Sonic for Headphones**.
- ES** 1. Ir a **Configuración > General > Salida de volumen y sonido**.  
2. Selecciona **Windows Sonic** para auriculares en **Sonido de los auriculares**.
- IT** 1. Vai a **Impostazioni > Generale > Volume e uscita audio**.  
2. Imposta audio cuffie su **Windows Sonic per cuffie**.
- SE** 1. Gå till **Inställningar > Allmänt > Volym och ljudutdata**.  
2. Ställ in **Windows Sonic for Headphones** under **Headsetljud**.
- NL** 1. Ga naar **Instellingen > Algemeen > Volume- en audio-uitvoer**.  
2. Stel **Audio voor hoofdtelefoon** in op **Windows Sonic voor hoofdtelefoon**.
- FR** 1. Allez dans **Paramètres > Général > Volume et sortie audio**.  
2. Réglez **Son du casque** sur **Windows Sonic pour casque**.
- DE** 1. Gehe zu **Einstellungen > Allgemein > Lautstärke & Audioausgabe**.  
2. Aktiviere **Windows Sonic for Headphones** für **Headset-Audio**.
- PT** 1. Vai a **Definições > Geral > Saída de áudio e volume**.  
2. Configura o **Áudio dos Auscultadores** para **Windows Sonic nos Auscultadores**.
- DK** 1. Gå til **Indstillinger > Generelt > Lydstyrke og lydoutput**.  
2. Indstil **headsettets lyd** til **Windows Sonic for Headphones**.

For updated setup instructions visit:  
Instrucciones de la configuración actualizadas en:  
[turtlebeach.com/sonic](http://turtlebeach.com/sonic)

### CHARGING CARGANDO

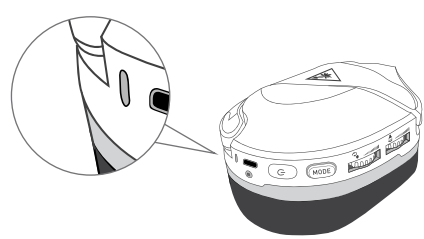
The Stealth™ 600 Gen 2 gives you **15 hours** of rechargeable battery life. Make sure to charge it regularly before storing. Los auriculares Stealth™ 600 Gen 2 te ofrecen **15 horas** de juego por cada carga de la batería. Asegúrate de cargarlos con frecuencia antes de guardarlos.



**Headset Storage**  
Always charge your headset before storing it for any extended period of time (greater than 3 months). Never store the unit in temperatures above 113°F/43°C.

**Almacenamiento de los auriculares:**  
Antes de un almacenamiento prolongado (más de 3 meses) carga los auriculares. No almacenar el equipo a temperaturas superiores a los 45 °C (113 °F).

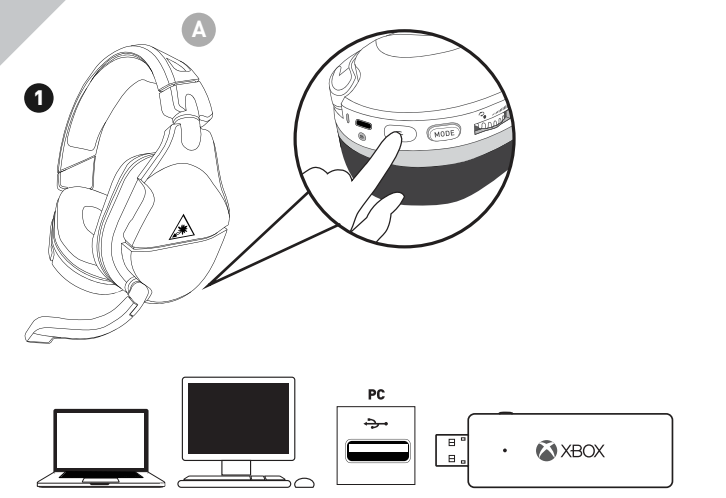
### HEADSET LED INDICADOR LED DE LOS AURICULARES



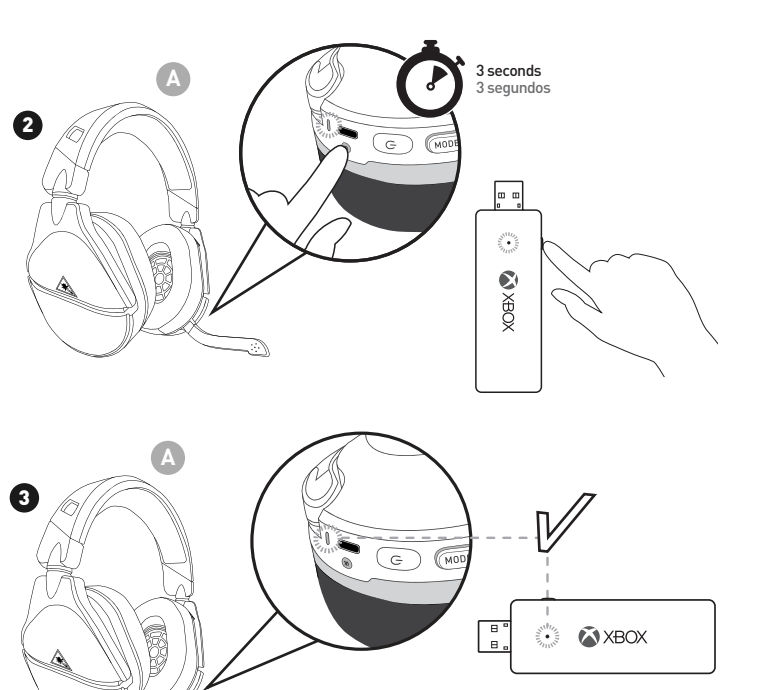
HEADSET LED	MEANING
Solid Green	Headset and Console Paired
Breathing Green	[While Charging] Battery Full
Double-Blink Green	Not Paired
Solid Red	[While Charging] Battery Charging
Breathing Red	Battery Low
ES	VOYANT DU CASQUE
Verde constante	Auriculares y consola emparejados
Verde variable	[Durante la carga] Batería llena
Verde con doble parpadeo	No emparejados
Rojo constante	[Durante la carga] Cargando la batería
Rojo variable	Batería baja

### SETUP FOR PC USE CONFIGURACIÓN PARA PC

**SYNCING YOUR HEADSET  
(XBOX WIRELESS ADAPTER)\*  
EMPAJEAR TUS AURICULARES  
(ADAPTADOR INALÁMBRICO PARA XBOX)\***



\*Xbox Wireless Adapter not included  
\*No incluye adaptador inalámbrico para Xbox



### SYNCING YOUR HEADSET (BUILT-IN XBOX WIRELESS) EMPAJEAR TUS AURICULARES (CONEXIÓN INALÁMBRICA A XBOX INCORPORADA)

- EN** 1. On your PC, go to **Settings > Devices > Connected Devices**.  
a. Choose **Add a device**. Windows searches for the headset.  
2. Press the **connect** button on your headset. Windows finds and adds the headset.  
3. When your **Stealth™ 600** headset appears in the list under **Other devices**, it is ready to use.  
4. Configuring your settings > On the Windows Taskbar, right-click the **Speaker Icon**, **Select Playback Devices**.  
a. Set **TURTLE BEACH Stealth 600™** as your default device.  
b. Select **Recording Devices**, Set **TURTLE BEACH Stealth 600™** as your default device.
- ES** 1. En tu PC, ve a **Configuración > Dispositivos > Dispositivos conectados**.  
a. Elige **Añadir un dispositivo**. Windows buscará los auriculares.  
2. Pulsa el botón de conectar en los auriculares. Windows buscará y añadirá los auriculares.  
3. Cuando los auriculares **Stealth™ 600** aparecen en la lista de **Otros dispositivos**, estarán listos para usarse.  
4. Para configurar > En la barra de tareas de Windows, haz clic derecho en el icono del altavoz, selecciona **Dispositivos de reproducción**  
a. Configura **Stealth 600™** de **TURTLE BEACH** como dispositivo predeterminado.  
b. Selecciona **Dispositivos de grabación**, configura **Stealth 600™** de **TURTLE BEACH** como dispositivo predeterminado.
- DE** 1. Wählen Sie auf Ihrem PC **Einstellungen > Geräte > Angeschlossene Geräte**.  
a. Wählen Sie „Gerät hinzufügen“. Windows sucht jetzt nach dem Headset.  
2. Drücken Sie den Knopf „Connect“ (Anschließen) auf Ihrem Headset. Windows findet das Headset und fügt es hinzu.  
3. Sobald Ihr **Stealth™ 600** Headset in der Liste unter „Andere Geräte“ angezeigt wird, kann es benutzt werden.  
4. Einstellungen konfigurieren > Rechtsklicken Sie das Lautsprechersymbol in der Windows Taskleiste und wählen Sie „Wiedergabegeräte“.  
a. Wählen Sie **TURTLE BEACH Stealth 600™** als Ihr Standardgerät.  
b. Wählen Sie „Audiowiedergabe“ und legen Sie **TURTLE BEACH Stealth 600™** als Ihr Standardgerät fest.

- DK** 1. Gå til **Indstillinger > Enheder > Tilsluttede enheder** på din pc.  
a. Vælg **Tilføj en enhed**. Windows vil søge efter headsettet.  
2. Tryk på forbindelsesknappen på dit headset. Windows vil finde og tilføje headsettet.  
3. Når dit **Stealth™ 600**-headset bliver vist på listen under **Andre enheder**, er det klar til brug.  
4. Justér dine indstillinger > Højreklik på højtalersikonet på Windows-prosessen, og vælg **Åbningssenheder**.  
a. Vælg **TURTLE BEACH Stealth 600™** som standardenhed.  
b. Vælg **Optagelsesenheder**, og vælg herunder **TURTLE BEACH Stealth 600™** som standardenhed.
- IT** 1. Sul PC, selezionare **Impostazioni > Dispositivi > Dispositivi connessi**.  
a. Scegliere **Aggiungi un dispositivo**. Windows cerca il cuffie.  
2. Premere il pulsante di connessione sulle cuffie. Windows trova e aggiunge le cuffie.  
3. Quando le cuffie **Stealth™ 600** compaiono nella lista sotto **Altri dispositivi**, vuol dire che sono pronte per l'utilizzo.  
4. Configurazione delle impostazioni > Sulla barra delle applicazioni di Windows, fare doppio clic sull'icona dell'altoparlante, selezionare **Periferiche di riproduzione**  
a. Impostare **TURTLE BEACH Stealth 600™** come dispositivo predefinito.  
b. Selezionare **Periferiche di registrazione**, impostare **TURTLE BEACH Stealth 600™** come dispositivo predefinito.
- SE** 1. Gå till **Inställningar > Enheter > Ljudenheter** på din dator.  
a. Klicka **En apparat tilläggas**. Windows söker nu söka efter headsettet.  
2. Tryck på anslutningsknappen på headsetet. Windows hittar och lägger till headsetet.  
3. När **Stealth™ 600**-headsetet visas under **Andra enheter** är det redo att användas.  
4. Göra inställningar > Höjreklicka på högtalarskonen i aktivitetsfältet och välj **Uppspelningsenheter**.  
a. Välj **TURTLE BEACH Stealth 600™** som din standardenhet.  
b. Gå till fliken **Inspelning** och välj **TURTLE BEACH Stealth 600™** som din standardenhet.

- FR** 1. Sur votre PC, ouvrez **Paramètres > Périphériques > Appareils connectés**.  
a. Sélectionnez **Ajouter un périphérique**. Windows recherche le casque.  
2. Appuyez sur le bouton **Connexion** de votre casque. Windows trouve le casque et l'ajoute.  
3. Votre casque **Stealth™ 600** est prêt à l'emploi lorsqu'il apparaît dans la liste **Autres appareils**.  
4. Pour configurer les paramètres, faites un clic droit sur l'icône de haut-parleur dans la barre des tâches de Windows et sélectionnez **Périphériques de lecture**  
a. Sélectionnez le casque **TURTLE BEACH Stealth 600™** comme appareil par défaut.  
b. Sélectionnez **Périphériques d'enregistrement**, puis sélectionnez le casque **TURTLE BEACH Stealth 600™** comme appareil par défaut.
- PT** 1. No PC, dirija-se a **Definições > Dispositivos > Dispositivos ligados**.  
a. Seleccione **Adicionar um dispositivo**. O Windows irá procurar os auscultadores.  
2. Prima o botão de ligação nos auscultadores. O Windows irá encontrar e adicionar os auscultadores.  
3. Quando os auscultadores **Stealth™ 600** surgirem na lista **Otros dispositivos**, estará pronto a ser utilizado.  
4. Configurar definições > Clique com o botão direito no ícone de altifalante na barra de tarefas do Windows e seleccione **Dispositivos de Reprodução**  
a. Defina o **TURTLE BEACH Stealth 600™** como seu dispositivo predefinido.  
b. Selecciona **Dispositivos de Reprodução e defina o TURTLE BEACH Stealth 600™** como o seu dispositivo predefinido.
- NL** 1. Ga op je pc naar **Instellingen > Apparaten > Verbonden apparaten**.  
a. Kies **En apparaat toevoegen**. Windows zoekt naar de headset.  
2. Druk op de verbindingsknop op de headset. Windows vindt de headset en voegt deze toe.  
3. Naar de **Stealth™ 600**-headset onder de lijst met **Overige apparaten** verschijnt, is deze klaar voor gebruik.  
4. Klik tijdens de configuratie van je instellingen in de Windows-taakbalk met de rechtermuisknop op het speakersymbool en selecteer **AFspeelapparaten**  
a. Selecteer **TURTLE BEACH Stealth 600™** als standaardapparaat.  
b. Selecteer **Opnamepararaten**, stel **TURTLE BEACH Stealth 600™** in als standaardapparaat.

### Regulatory Compliance Statements for the Stealth™ 600X Gen 2

**Local Restrictions on 802.11a, 802.11b, 802.11g and 802.11n Radio Usage**  
**Caution:** Due to the fact that the frequencies used by 802.11a, 802.11b, 802.11g and 802.11n wireless LAN devices may not yet be harmonized in all countries, 802.11a, 802.11b, 802.11g and 802.11n products are designed for use only in specific countries, and are not allowed to be operated in countries other than those of designated use. As a user of these products, you are responsible for ensuring that the products are used only in the countries for which they were intended and for verifying that they are configured with the correct selection of frequency and channel for the country of use. Any deviation from the permissible power and frequency settings for the country of use is an infringement of national law and may be punished as such.

To determine whether you are allowed to use your wireless network device in a specific country, please check to see if the radio type number that is printed on the identification label of your device is listed in the manufacturer's OEM Regulatory Guidance document at the following URL: <http://www.turtlebeach.com/homologation> or contact Turtle Beach directly.

**Federal Communications Commission (FCC) Compliance Notices**  
This section includes the following FCC statements for the Stealth™ 600X Gen 2:  
• FCC ID: X035-182315  
• Class B Interference Statement  
• Radio Frequency Exposure & Hazard Warning  
• Non-Modification Statement  
• Unlicensed National Information Infrastructure Bands Operation Statement

**Class B Interference Statement**  
This equipment has been tested and found to comply with the limits for a Class B digital device, pursuant to Part 15 of the FCC Rules. These limits are designed to provide reasonable protection against harmful interference in a residential installation. This equipment generates, uses, and can radiate radio frequency energy and, if not installed and used in accordance with the instructions, may cause harmful interference to radio communications. However, there is no guarantee that interference will not occur in a particular installation. If this equipment does cause harmful interference to radio or television reception, which can be determined by turning the equipment off and on, the user is encouraged to try to correct the interference by one or more of the following measures:

- Reorient or relocate the receiving antenna.
- Increase the separation between the equipment and receiver.
- Connect the equipment into an outlet on a circuit different from that to which the receiver is connected.
- Consult the dealer or an experienced radio/TV technician for help.

**FCC Caution:**  
This device complies with Part 15 of the FCC Rules. Operation is subject to the following two conditions: [1] This device may not cause harmful interference, and [2] this device must accept any interference received, including interference that may cause undesired operation.

**RF Radiation Exposure & Hazard Statement**  
To ensure compliance with FCC RF exposure requirements, this device must be installed in a location such that the antenna of the device will be greater than 2 cm (0.8 in.) from all persons. Using higher gain antennas and types of antennas not covered under the FCC certification of this product is not allowed. Installers of the radio and end users of the product must adhere to the installation instructions provided in this manual. This transmitter must not be co-located or operated in conjunction with any other antenna or transmitter.

**Non-Modification Statement**  
Use of the supplied internal antenna. Unauthorized antennas, modifications, or attachments may damage the Stealth™ 600X Gen 2 and violate FCC regulations. Any changes or modifications not expressly approved by the party responsible for compliance could void the user's authority to operate this equipment. Please contact Turtle Beach for a list of approved 2.4 GHz and 5.0 GHz antennas.

**Unlicensed National Information Infrastructure (U-NII) Bands Operation Statement**  
Within the 5.25-5.35 GHz band, U-NII devices will be restricted to indoor operations and reduce any potential for harmful interference to co-channel MDS operations.  
The U-NII devices shall accept any interference from legal communications and shall not interfere with the legal communications. If interference is caused, the user must stop operating the device immediately and cannot resume operation until the harmful interference is clear.  
Manufacturers of U-NII devices are responsible for ensuring frequency stability such that an emission is maintained within the band of operation under all conditions of normal operation as specified in this user manual.

**Dynamic Frequency Selection (DFS)**  
U-NII devices operating in the 5.25-5.35 GHz and 5.47-5.725 GHz bands shall employ a DFS radar detection mechanism to detect the presence of radar systems and to avoid co-channel operation with radar systems in order to reduce the likelihood of interference to radar. The modification of wireless broadband and other transmitter frequencies or the disabling of DFS capabilities is a violation of FCC rules and may result in unlawful interference to radio communications services critical to public safety. This product is compliant with the Consumer Product Safety Improvement Act of 2008, Public Law 110-314 (CPISIA).

**Canadian ICES Statements (IC: 3879A-2315 | Stealth™ 600X Gen 2)**  
This device complies with ICES-003 and RSS-347 of Industry Canada. Operation is subject to the following two conditions:  
1. This device may not cause interference, and  
2. This device must accept any interference, including interference that may cause undesired operation of the device.

**Ce dispositif est conforme aux normes NRB003 et CNR-247 de l'industrie Canadienne.**  
L'utilisation de ce dispositif est autorisée sous réserve des conditions suivantes:  
2. Il ne doit pas produire de brouillage et l'utilisateur du dispositif doit être prêt à accepter tout brouillage radioélectrique reçu, même si ce brouillage est susceptible de compromettre le fonctionnement du dispositif.  
To prevent radio interference to the licensed service (i.e., co-channel Mobile Satellite systems) this device is intended to be operated indoors and away from windows to provide maximum shielding. Equipment for its transmit antenna is installed outdoors is subject to licensing and not supported by Stealth™ 600X Gen 2 Model.

**RF Radiation Exposure & Hazard Statement**  
To ensure compliance with FCC RF exposure requirements, this device must be installed in a location such that the antenna of the device will be greater than 2 cm (0.8 in.) away from all persons. Using higher gain antennas and types of antennas not covered under the IC certification of this product is not allowed. Installers of the radio and end users of the product must adhere to the installation instructions provided in this manual. This transmitter must not be co-located or operated in conjunction with any other antenna or transmitter.

**Exposition aux radiations RF et Mention de danger**  
Pour assurer la conformité avec les exigences RSS-102 d'exposition aux RF (Radio Fréquences), cet appareil doit être installé dans un endroit où l'antenne de l'appareil sera située à une distance de plus de 2 cm (0,8 po) de toutes personnes. L'utilisation d'antennes à gain plus élevé et les types d'antennes qui ne sont pas couverts par le certificat IC de ce produit ne sont pas autorisés. Les installateurs de la radio et les utilisateurs du produit doivent se conformer aux instructions d'installation fournies dans ce manuel. Cet émetteur ne doit pas être co-implanté ou exploité en conjonction avec toute autre antenne ou transmetteur.

**Deployment Statement**  
This product is certified for indoor deployment only in the 5150-5250 MHz band. Do not install or use this product outdoors in that frequency class in Canada.

**Déclaration de déploiement**  
Ce produit est certifié pour le déploiement à l'intérieur tout en rencontrant les limites de cette bande de fréquences: 5150-5250 MHz. Ne pas installer ou utiliser ce produit à l'extérieur de cette bande de fréquences ni peut être rencontré.

**Operation in the Frequency Bands 5170-5725 MHz and 5725-5850 MHz**  
U-NII devices subject to this section shall not be capable of transmitting in the band from 5600-5650 MHz. This restriction is for the protection of Environment Canada's weather radars operating in this band. Users are advised that high-power radars are allocated as primary users (i.e. priority access) of the bands 5250-5350 MHz and 5650-5850 MHz and that these radars could cause interference and/or damage to L-EAN devices.

**Fonctionnement dans les bandes de fréquence 5470-5725 MHz et 5725-5850 MHz**  
Jusqu'à nouvel avis, les appareils soumis à cette section ne doivent pas émettre transmis dans la bande de 5600-5650 MHz. Cette restriction concerne la protection des radars météorologiques d'Environment Canada opérant dans cette bande. Les utilisateurs des avisés que les utilisateurs de radars de haute puissance sont désignés utilisateurs principaux (c.-à-d., qu'ils ont la priorité) pour les bandes 5250-5350 MHz et 5650-5850 MHz et que ces radars pourraient causer de l'interférence et/ou des dommages aux dispositifs L-EAN.

**European Union and European Fair Trade Association Regulatory Compliance**  
This product is compliant with the countries that comprise the member countries of the European Union and the European Fair Trade Association. These countries, listed below, are referred to as The European Community throughout this document:  
AUSTRIA, BELGIUM, BULGARIA, CYPRIUS, CZECH REPUBLIC, DENMARK, ESTONIA, FINLAND, FRANCE, GERMANY, GREECE, HUNGARY, IRELAND, ITALY, LATVIA, LITHUANIA, LUXEMBOURG, MALTA, NETHERLANDS, POLAND, PORTUGAL, ROMANIA, SLOVAKIA, SLOVENIA, SLOVENIA, SPAIN, SWEDEN, UNITED KINGDOM, UNITED KINGDOM, LICHTENSTEIN, NORWAY, SWITZERLAND

**CE Declaration of Conformity**  
Marking by this symbol:  
Indicates compliance with the Essential Requirements of the Radio Equipment Directive (RED) of the European Union (2014/53/EU). This equipment meets the following conformance standards:

**Safety:** EN 60950-1:2006 + A11:2009 + A1:2010 + A12:2011 + A2:2013 (Mark License),  
IEC 60950-1:2005 (2nd Ed.) + Am 1:2009 + Am 2:2013 (IEC Scheme Certificate),  
EN 62368-1:2014 + A11:2014 (Mark License),  
IEC 62368-1:2014 (CB Scheme Certificate),  
EN 60332-1:2013, EN 60332-2:2013, EN 71-3:2013

**EMC:** EN 55032:2015, CISPR 32:2015,  
EN 301 489-1 V2.1.1 (2017) 425, EN 301 489-1 V2.1.1 (2017) 425,  
EN 61000-4-2:2009, EN 61000-4-3:2008 + A1:2008 + A2:2010, EN 61000-4-8:2010  
The products are licensed, as required, for additional country specific standards for the International Marketplace. Additional licenses issued for specific countries available on request

**Battery:** EN 300 328 V2.1.2 (2017) 071, EN 301 893 V2.1.1 (2017) 051  
SAR: EN 12510:2009  
**Environmental:** RoHS 2015/863 amending Annex II to 2011/65/EU, WEEE 2012/19/EU, REACH 2006/1907/EC, Packaging 94/42/EC, Battery 2006/46/EC, Toys Safety Directive 2009/90/EC

**Warning!** This is a Class B product. In a domestic environment, this product may cause radio interference, in which case, the user may be required to take appropriate measures.  
**Achtung!** Dieses ist ein Gerät der Funkstörklasse B. In Wohnbereichen können bei Betrieb dieses Gerätes Funkstörungen auftreten, in welchen Fällen der Benutzer für entsprechende Gegenmaßnahmen verantwortlich ist.  
**Attention:** Ceci est un produit de Classe B. Dans un environnement domestique, ce produit risque de créer des interférences radioélectriques, il appellera l'attention alors à l'utilisateur de prendre les mesures spécifiques appropriées.

**Non-Modification Statement**  
Use of the supplied internal antenna. Unauthorized antennas, modifications, or attachments may damage the Stealth™ 600X Gen 2 and violate FCC regulations. Any changes or modifications not expressly approved by the party responsible for compliance could void the user's authority to operate this equipment. Please contact Turtle Beach for a list of approved 2.4 GHz and 5.0 GHz antennas.

**Local Restrictions on 802.11a, 802.11b, 802.11g and 802.11n Radio Usage**  
**Caution:** Due to the fact that the frequencies used by 802.11a, 802.11b, 802.11g and 802.11n wireless LAN devices may not yet be harmonized in all countries, 802.11a, 802.11b, 802.11g and 802.11n products are designed for use only in specific countries, and are not allowed to be operated in countries other than those of designated use. As a user of these products, you are responsible for ensuring that the products are used only in the countries for which they were intended and for verifying that they are configured with the correct selection of frequency and channel for the country of use. Any deviation from the permissible power and frequency settings for the country of use is an infringement of national law and may be punished as such.

To determine whether you are allowed to use your wireless network device in a specific country, please check to see if the radio type number that is printed on the identification label of your device is listed in the manufacturer's OEM Regulatory Guidance document at the following URL: <http://www.turtlebeach.com/homologation> or contact Turtle Beach directly.

**Federal Communications Commission (FCC) Compliance Notices**  
This section includes the following FCC statements for the Stealth™ 600X Gen 2:  
• FCC ID: X035-182315  
• Class B Interference Statement  
• Radio Frequency Exposure & Hazard Warning  
• Non-Modification Statement  
• Unlicensed National Information Infrastructure Bands Operation Statement

**Class B Interference Statement**  
This equipment has been tested and found to comply with the limits for a Class B digital device, pursuant to Part 15 of the FCC Rules. These limits are designed to provide reasonable protection against harmful interference in a residential installation. This equipment generates, uses, and can radiate radio frequency energy and, if not installed and used in accordance with the instructions, may cause harmful interference to radio communications. However, there is no guarantee that interference will not occur in a particular installation. If this equipment does cause harmful interference to radio or television reception, which can be determined by turning the equipment off and on, the user is encouraged to try to correct the interference by one or more of the following measures:

- Reorient or relocate the receiving antenna.
- Increase the separation between the equipment and receiver.
- Connect the equipment into an outlet on a circuit different from that to which the receiver is connected.
- Consult the dealer or an experienced radio/TV technician for help.

**FCC Caution:**  
This device complies with Part 15 of the FCC Rules. Operation is subject to the following two conditions: [1] This device may not cause harmful interference, and [2] this device must accept any interference received, including interference that may cause undesired operation.

**RF Radiation Exposure & Hazard Statement**  
To ensure compliance with FCC RF exposure requirements, this device must be installed in a location such that the antenna of the device will be greater than 2 cm (0.8 in.) from all persons. Using higher gain antennas and types of antennas not covered under the FCC certification of this product is not allowed. Installers of the radio and end users of the product must adhere to the installation instructions provided in this manual. This transmitter must not be co-located or operated in conjunction with any other antenna or transmitter.

**Non-Modification Statement**  
Use of the supplied internal antenna. Unauthorized antennas, modifications, or attachments may damage the Stealth™ 600X Gen 2 and violate FCC regulations. Any changes or modifications not expressly approved by the party responsible for compliance could void the user's authority to operate this equipment. Please contact Turtle Beach for a list of approved 2.4 GHz and 5.0 GHz antennas.

### To access the rating label: Para acceder a la etiqueta de evaluación:

- Remove the left ear pad by pulling the ear pad straight up using your thumb.
- Quitá la almohadilla izquierda al jalarla directamente hacia arriba con el pulgar.



- Once you've released the cloth from the lip on top, pull the ear pad straight back and it should slip right off.
- Cuando hayas separado la tela de la arilla en la parte superior, jala la almohadilla directamente hacia abajo, y entonces se debe salir fácilmente de su lugar.



To replace the ear pad, follow the same process in reverse. Para reemplazar la almohadilla, sigue el mismo proceso en orden inverso.

**Not seeing what you're looking for here?**  
Visit [turtlebeach.com/support](http://turtlebeach.com/support) for the latest Tech Support information.

¿Tienes alguna duda?  
Visita [es.turtlebeach.com/pages/serv](http://es.turtlebeach.com/pages/servicio-asistencia)