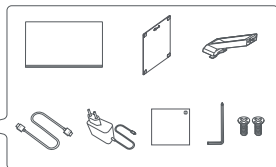
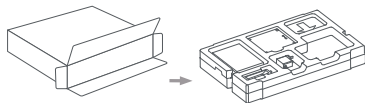


xiaomi Gaming Monitor G27i

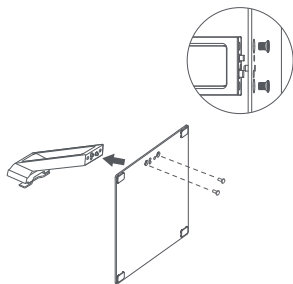
User Manual



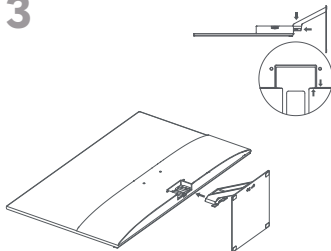
1



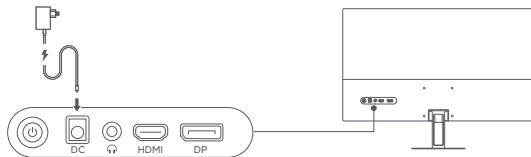
2



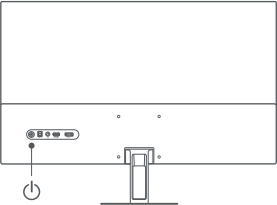
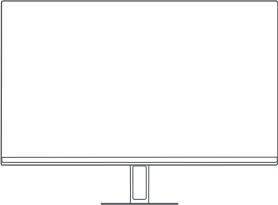
3



4



Specifications



Model: P27FBB-RGGL	
Power Input: 12 V== 3.0 A	HDMI Maximum Refresh Rate: 48-165Hz
Rated Power *: 36 W Max.	DP Maximum Refresh Rate: 48-165Hz
Screen Size: 27"	Tilt: -5° to +15°
Aspect Ratio: 16:9	Storage Temperature: -20°C to 60°C
Maximum Resolution: 1920 × 1080	Operating Temperature: 0°C to 40°C
Recommended Resolution: 1920 × 1080	Operating Humidity: 20%~80% RH

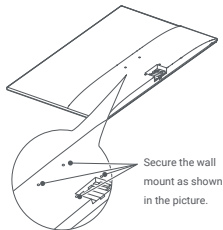
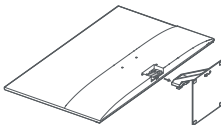
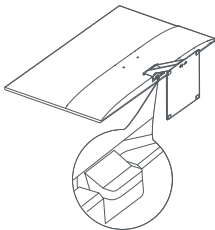
External AC Adapter Specifications
Model Identifier: AD-0361200300EU
Input Voltage: 100-240 V AC
Input AC Frequency: 50/60 Hz
Output Voltage: 12 V DC
Output Current: 3.0 A
Output Power: 36 W
Manufacturer: Shenzhen AMC Technology Co., Ltd.

* The product nameplate is located on the bottom of the monitor.

Function Button Description			
Button Operation		Result	
		When menu is not displayed on the monitor.	When main menu is displayed on the monitor.
Short press to right.		Enter the main menu.	Enter/select.
Short press to up/down.		Open brightness settings.	Switch Menu adjusting values.
Short press to left.		Open signal source switching list.	Return.
Short press the middle.		Turn the monitor on /Open the shortcut menu.	Enter/select.
Press and hold for 3 seconds.		Shutdown.	

Wall mounting

- For installation methods and precautions, please refer to the installation guide of the wall mount you purchased.
- The wall mount must be purchased separately.
- Tip: This product is compatible with wall mounts that have a hole spacing of 75 × 75 mm.
- The bolts used to secure the wall mount must meet the following requirements: Quantity: 4; Thread: M4; Length: 10 mm.
- Lay the monitor flat, with its back facing upwards. Use your finger to press the spring clip that joins the base to the monitor and remove the base.
- Note: When removing the base, be careful not to pinch your finger in the spring clip.
- Follow the wall mount user manual and install the wall mount onto the bolts that are built into the housing back.



Troubleshooting

Issue	Possible Cause	Solutions
Unable to turn on	No power	Make sure the power adapter is plugged in properly.
Image is dark	Brightness/ Contrast not adjusted properly	Adjust the brightness and contrast.
Image is jittery or has ripples	Interference	Keep the monitor away from electronic devices that may cause electrical interference.
No image on the screen.	No signal, entering sleep mode	Turn on the computer. Make sure the computer's graphics card is working properly. Make sure the cable is plugged in properly.
The monitor displays that the current resolution is not supported	Resolution is incorrect	Use the specified recommended resolution settings.

Important precautions

- Do not use this monitor in damp or humid environments such as bathrooms, kitchens, basements, or near swimming pools.
- Make sure the monitor is placed on a stable surface. If the monitor falls down or is knocked over, it may cause personal injury or damage to the monitor.
- Store and use the monitor in a cool, dry, and ventilated place. Keep the monitor away from radiation and heat sources.
- Do not cover or block the heat dissipation vents on the back of the monitor. Do not place the monitor on a bed, sofa, blanket, etc.
- The monitor's operating voltage range is indicated on a label on the back of the monitor. If you are unsure what voltage your power supply is, please contact the monitor's distributor or local power company.
- If you do not plan to use the monitor for a long period of time, unplug it from the electrical outlet so as to prevent possible damage from power surges or lightning strikes.
- Do not overload electrical outlets, as this may cause a fire or an electric shock.
- Do not attempt to disassemble or repair the monitor by yourself to avoid the risk of an electric shock. If the monitor is not functioning properly, please contact the after-sales service department for help.
- Do not excessively pull, twist, or bend the power cord.
- The power plug is a means of disconnecting the equipment from the mains. No loose items should be placed around the power plug to make sure that it can be easily plugged or unplugged.
- For pluggable devices, the output socket should be easily accessible.
- Note: When adjusting the tilt angle of the monitor, it is recommended that you support the base with one hand and adjust the monitor with the other hand. The monitor can easily tip over if you adjust it with only one hand.

Eye Health

To avoid eye strain, or neck, arm, elbow, and shoulder pain caused by using the computer for a long time, please follow the suggestions listed below:

- Keep the monitor at a distance of 20–28 inches (approx. 50–70 cm) from your eyes.

- Blink more often to relieve eye fatigue when staring at the monitor.
- Give your eyes a 20-minute break after using the monitor for two hours.
- Take your eyes off the monitor and look at something at a certain distance away for at least 20 seconds.
- Stretch your body to help relieve tension on the neck, arms, back, and shoulders.

Low Blue Light Description

In recent years, eye damage caused by blue light has attracted more and more attention. In general, the wavelength of blue light is 400–480 nm, and the wavelength of harmful blue light is 415–455 nm. This monitor has a function to help reduce your exposure to the blue light emission. You can enable the low blue light mode via the settings menu.

WEEE Disposal and Recycling Information



All products bearing this symbol are waste electrical and electronic equipment (WEEE as in directive 2012/19/EU) which should not be mixed with unsorted household waste. Instead, you should protect human health and the environment by

handing over your waste equipment to a designated collection point for the recycling of waste electrical and electronic equipment, appointed by the government or local authorities. Correct disposal and recycling will help prevent potential negative consequences to the environment and human health. Please contact the installer or local authorities for more information about the location as well as terms and conditions of such collection points.

EU Declaration of Conformity



We, Beijing Xiaomi Electronics Co., Ltd., hereby, declare that this equipment is in compliance with the applicable Directives and European Norms, and amendments. The full text of the EU declaration of conformity is available at the following internet address:

<http://www.mi.com/global/service/support/declaration.html>

Importer:
Beryko s.r.o.
Pod Vinicemi 931/2, 301 00 Plzeň
www.beryko.cz

HDMI™
HIGH-DEFINITION MULTIMEDIA INTERFACE

The Adopted Trademarks HDMI, HDMI High-Definition Multimedia Interface,
and the HDMI Logo are trademarks or registered trademarks of HDMI Licensing
Administrator, Inc. in the United States and other countries

